



MEETING SUMMARY

PROJECT ADVISORY GROUP (PAG) MEETING #1

September 19, 2019

2:00 PM – 4:00 PM

The Florida Department of Transportation – District 7 is conducting a Corridor Planning Study to evaluate the multimodal needs and develop potential solutions for the US-19 Frontage Roads within Pinellas County. A Project Advisory Group (PAG) was established to act as a sounding board for this project. The following identifies the PAG members in attendance and outlines the key comments that were discussed during the meeting.

Attendees:	Alex Henry, FDOT	Ric Hartman, City of Clearwater
	Ken Spitz, FDOT	Lauren Matzke, City of Clearwater
	Bill Riha, FDOT	Cory Marteus, City of Clearwater
	Chelsea Favero, Forward Pinellas	Robert Tefft, City of Pinellas Park
	Al Bartolotta, Forward Pinellas	Heather Sobush, PSTA
	Rodney Chatman, Forward Pinellas	Matt Weaver, Element Engineering Group
	Joan Rice, Pinellas County	Matt Wey, Wey Engineering
	Caroline Lanford, Pinellas County	Jennifer Musselman, Kittelson & Associates
	Barry Westmar, City of Largo	Ryan Casburn, Kittelson & Associates
	Daniel Villano, Florida Highway Patrol	Patty Hurd, Kittelson & Associates
	Frances Leong Sharp, City of Dunedin	

Meeting Goal:

The goal of the meeting was to provide an overview of the project and gather information from the PAG on the existing conditions of the corridor and the desired future vision of the corridor.

Meeting Highlights:

Frontage Roads Today

Attendees were asked to select one word that describes the frontage roads today:

- Slightly Congested
- Access
- Okay
- High Speed
- Unpleasant
- Land Use
- Unsafe
- Auto Centric
- Scary
- Opportunity
- Fast
- Difficult to Access/Get In and Out

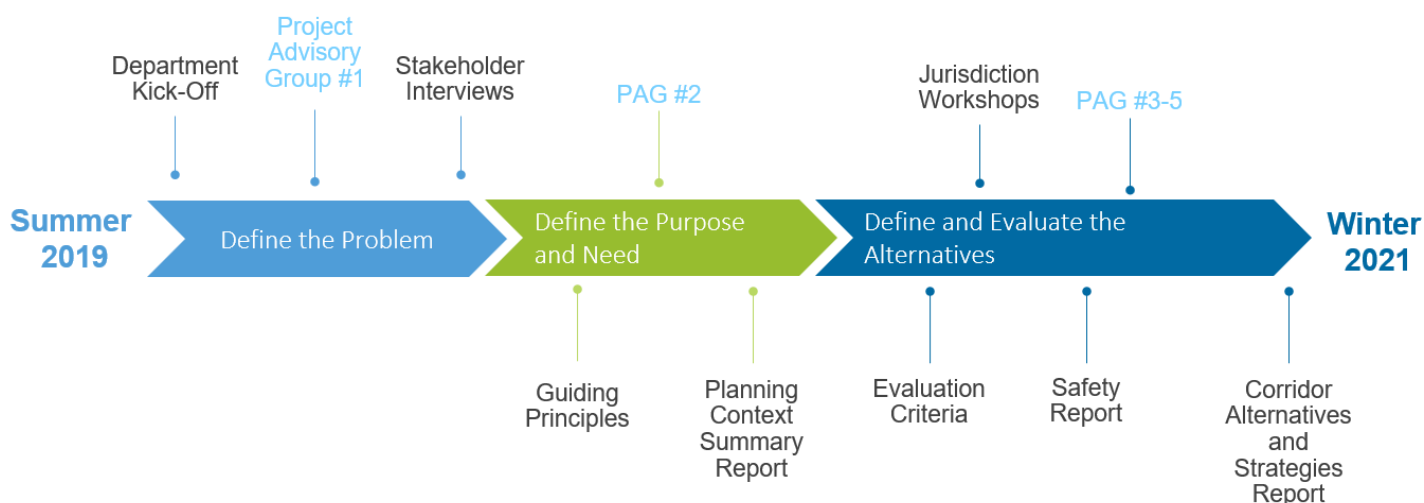


Project Schedule

The proposed schedule is 20-months, with the study ending in February 2021. The project will be conducted in three phases:

1. Define the Problem
2. Define the Purpose and Need
3. Define and Evaluate Alternative Concepts

The following graphic illustrates the timing of deliverables and public involvement milestones as they related to PAG engagement opportunities:



Ongoing Studies within Study Area:

The Study Team asked if there were any ongoing local studies or projects that overlapped with the FDOT study area. The following projects were mentioned:

- Pinellas County 126th Ave PD&E (Joan Rice) with bridge connection over Cross Bayou
- City of Largo Special Area Plan at Roosevelt Boulevard
- Gateway Expressway
- FDOT Pedestrian Overpasses
- Belleair Road Complete Streets Study
- Completion of the Pinellas Trail Loop

Break Out Group Discussion:

PAG members broke out into small groups related to each municipality and shared specific opportunities and challenges in each area. The following summarizes the key themes discussed.

Land Use:

- Redevelopment of existing parcels and urban infill anticipated along US 19, with multifamily residential development being the primary land use type.
- There is a multifamily redevelopment plan slated for the 49th Street area.
- There may be opportunity to consolidate properties to get better developments.



Multi-Modal:

- Pedestrian crossings along the frontage road are important. Provide new opportunities for crossing US 19.
- The right-turn on red pedestrian conflict is an issue at intersections.
- Streetlight data was suggested to identify areas of high pedestrian usage.
- Sidewalk widths and utility conflicts are issues with pedestrian safety.
- It is important that the frontage roads cater to all users, not just automobiles.
- There is a need for more multimodal infrastructure (safety for pedestrians, bicyclist, and transit users).
- The frontage roads are right of way constrained. It was suggested to amend the local government land development code to allow for wider sidewalks.
- Safety at intersections is a very important aspect of the study; especially for pedestrians crossing east-west. Opportunities to provide more protection for pedestrian crossings through use of leading pedestrian interval, protected left turns, and no right turn on red.
- There is a greater need to cater to transit along the frontage roads and create less friction for transit through congestion management.
- In the one lane areas, people try to jump the bus at bus stops.
- Cyclists must use the sidewalk in some areas.
- Sidewalks are narrow (4ft.).
- There are only bike lanes in one direction of travel. People do use the bike lanes where they are present, but most people use the sidewalk.
- Difficult for transit to access the Walmart. It has to loop around the signal.

Traffic & Access Management:

- Existing signal timing set to minimize queuing effects on US 19 off ramps and is only adjusted when the County receives public complaints.
- The angle of driveways affects safety for vehicles turning off of frontage into driveways.
- Speed and access management important factors (high speeds coming off of the ramps and low speed turning movements into and out of driveways).
- There may be poor visibility for driveways located close to a US 19 off ramp.
- Providing access to a back road or parallel local road may relieve congestion on the frontage roads.
- Consider a model ordinance for access management of frontage roads as part of this study and incorporate into land development code.
- Wayfinding signs on the frontage road may help drivers find their route easier.
- Deceleration lanes, lighting, midblock crossings are some treatments that can improve safety along the US 19 frontage roads.
- Frontage road usage is low in the Largo area because there are not a lot of major east-west roads that tie into the frontage road.
- Gateway Expressway will have an effect on the usage of US 19. It may decrease demand on the surface roads and increase traffic and conflicts on US 19.
- Much of the congestion issues along the frontage road are related to peak hour periods, much less congestion during off peak hours.
- Major intersections are dangerous
- U-turns at high speed are problematic; especially the Texas U-Turns at interchanges



Agency Coordination:

- Alternatives for the frontage roads should be coordinated with local partners. If we stay within the right-of-way and existing curb, there will be limited options.
- City staff are open to exploring land use code changes to make space for multi-modal improvements. The Forward Pinellas Board could act as a consensus building body before taking land use recommendations to individual City Councils. The City of Clearwater has already updated their code.
- School buses uses the frontage road frequently. It was suggested that Tammi Weeks (TCC schoolboard representative) or Stephanie Carrier be contacted for information about school bus routes.

Stakeholders to Interview:


PAG Member provided the following suggestions for stakeholder interviews:

- School District
- Countryside and Clearwater Malls
- Clearwater Parks and Recreation Department
- Freight/ logistics groups
- Chamber of Commerce
- Neighborhood Associations

Al Bartolotta (Forward Pinellas) offered to review initial list and suggest persons to add.

Attachments

- Presentation Slides



**US-19
FRONTAGE ROADS**
SAFETY ACTION PLAN

**FPID 444052-1
Project Advisory Group (PAG)**
Meeting #1
September 19, 2019

The logo features a blue shield with a white border. Inside the shield, the text 'US-19 FRONTAGE ROADS' is in blue, and 'SAFETY ACTION PLAN' is in white on an orange background. Below the text are four icons: a bicycle, a pedestrian, a car, and a bus.

1

Presentation Overview

- WELCOME & INTRODUCTIONS
- PAG ROLE & RESPONSIBILITIES
- PROJECT OVERVIEW AND ACTIVITIES
- OVERALL SCHEDULE
- TABLE EXERCISE / REPORT BACK
- WRAP-UP & NEXT STEPS

2



3



4

US-19

Welcome & Introductions



Project Management, Transportation and Land Use Planning, Traffic Analysis, Public Involvement



Safety Assessment, Roadway Concepts



Strategic Advisor

5

US-19

Welcome & Introductions



/ Tell us—

Your name and the role at the agency you represent

One word to describe the frontage roads today

6

6

US-19

Welcome & Introductions

- Forward Pinellas
- Pinellas County
- Pinellas County Safety & Emergency Services
- City of Pinellas Park
- City of Largo
- City of Clearwater
- City of Dunedin
- PSTA
- Florida Highway Patrol
- FDOT

**Project
Advisory
Group**

7

7



PAG Roles & Responsibilities

2

8

PAG Roles & Responsibilities



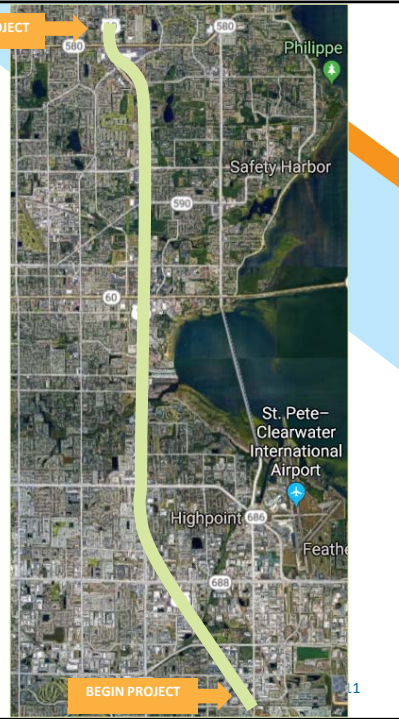
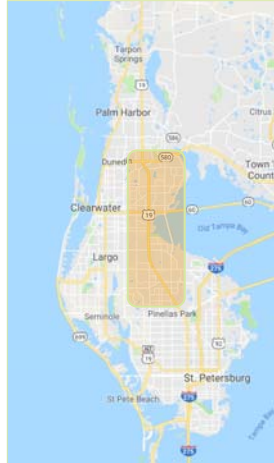
- Be a champion of the safety planning efforts and the intended outcome of the PAG
- Be a salesperson on behalf of the PAG to other agency partners and community organizations
- Provide guidance and input throughout the project
- Be an advocate to get the word out and solicit input from others

3

Project Overview & Activities

Project Overview & Activities

/ Project Limits



11

Project Overview & Activities

/ Project Purpose

Objectively evaluate possible changes to improve **multimodal safety, operations, and connectivity.**

Provide the local municipalities **recommendations for land use changes** that may help facilitate the recommended multimodal improvements to the roadway.

US-19

12

12

US-19

Project Overview & Activities

/ Tasks

```
graph LR; T1[Task 1: Define the Problem] --> T2[Task 2: Define the Purpose & Need]; T2 --> T3[Task 3: Define, Evaluate & Select Alternative Concepts];
```

13

13

US-19

Project Overview & Activities

/ Task #1

Questions this phase is designed to answer

Define the Problem	Who are the users? What is their current experience? What is the role of the frontage road today?
--------------------	--

14

14

US-19

Project Overview & Activities

/ Task #2



Questions this phase is designed to answer

Define the Purpose and Need	<p>What are the needs and opportunities for each user?</p> <p>What is the future vision for the corridor?</p>
-----------------------------	---

15

15

US-19

Project Overview & Activities

/ Task #3



Questions this phase is designed to answer

Define and Evaluate the Alternative Concepts	<p>What land use and transportation solutions exist to solve the problems identified?</p> <p>What is the effect of the alternative(s) on each mode?</p> <p>What alternatives best meet the needs identified ?</p> <p>Are there fatal flaws for implementation?</p>
--	---

16

16

Project Overview & Activities



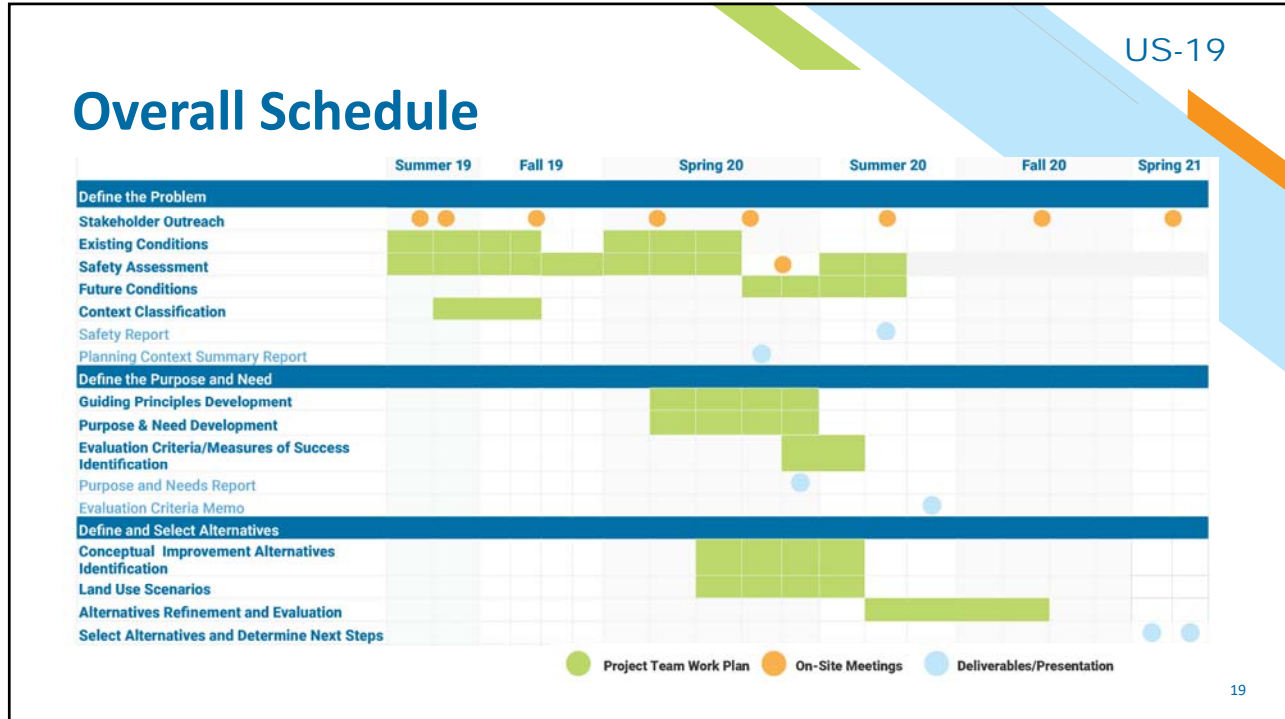
Does anyone in the group know or is aware of any effort that overlaps, or feeds into/ impacts this study?

Are there any potential obstacles we may encounter as we engage the community?

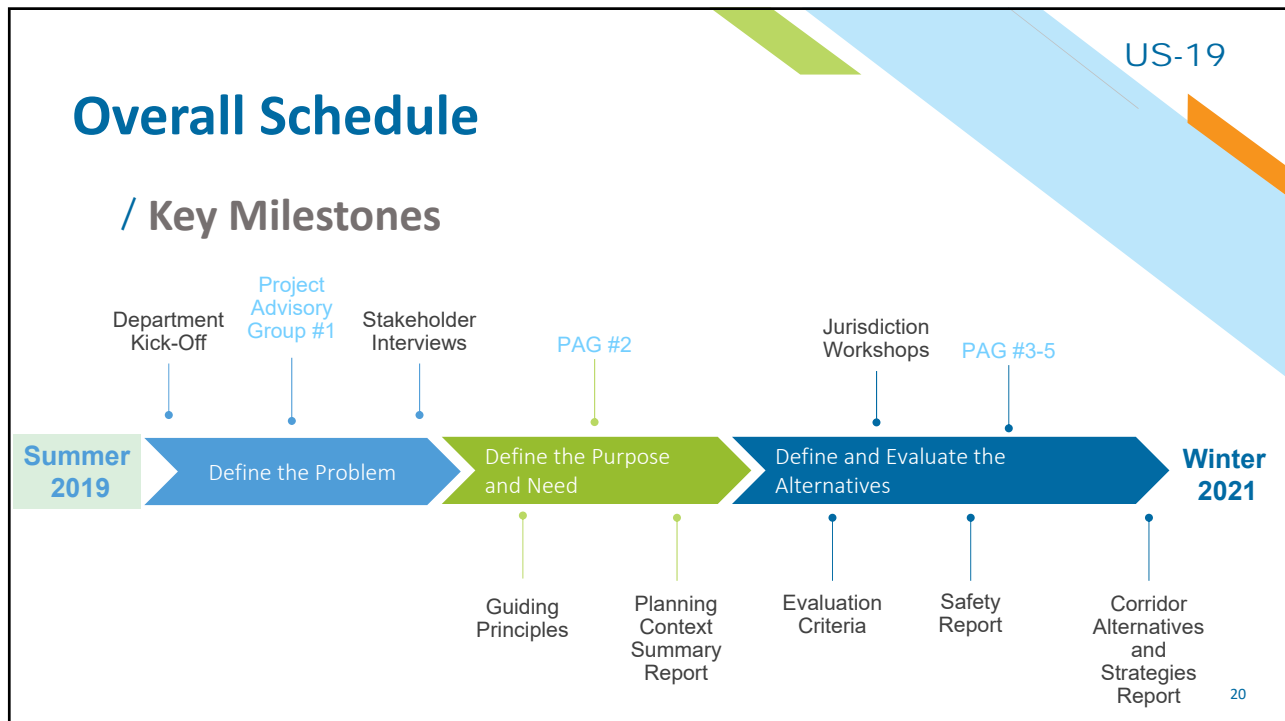
Are there any landmines we should be aware about?

4

Overall Schedule




19



20

US-19

/ PAG Meetings



/ Review project background, roles & responsibilities, project schedule, purpose & scope

/ Review feedback from preliminary engagement activities during opportunities & needs workshop. Review existing conditions analysis and safety assessment. Review project purpose and need, guiding principles

/ Review stakeholder and public input. Review evaluation criteria and land use scenarios for each focus area

/ Review multimodal improvement alternatives comparative analysis and solicit input on preferred alternative (s)

/ Present project summary and review final roadway and land use concepts

#1. Sept. 2019

#2. Early 2020

#3. Summer 2020

#4. Fall 2020

#5. Early 2021

21

21

US-19

/ Stakeholder Interviews

FORMAT: 1-hour interviews with PAG Members, Chambers of Commerce, Economic Development Councils, Major Business Owners, Residential Associations

INFORMATION REVIEWED

- Frontage roads case studies
- Corridor-wide land use and safety mapping
- Review of previous planning studies
- Preliminary findings
- Context Classification

OUTCOMES

- Identify issues and opportunities
- Identify focus areas for each jurisdiction

22

US-19

/ Jurisdiction Workshops

FORMAT: 2-day work session in each focus area with participation from PAG Members, Major Business Owners, and Residential Associations

INFORMATION REVIEWED	OUTCOMES
<ul style="list-style-type: none">• Detailed traffic operations analysis for focus areas• Detailed safety analysis for focus areas• Preliminary concept ideas and land use scenarios	<ul style="list-style-type: none">• Road safety audit for each focus area• Business/homeowners focus group• Develop transportation and land use alternatives for each focus area

23




Table Exercise

24

US-19

Table Exercise



/ Ice Breaker :
What's the outcome you want to see out of this study? (3 post-it notes)


25

25

US-19

Table Exercise

/ **Break-Up Activity (Maps):**

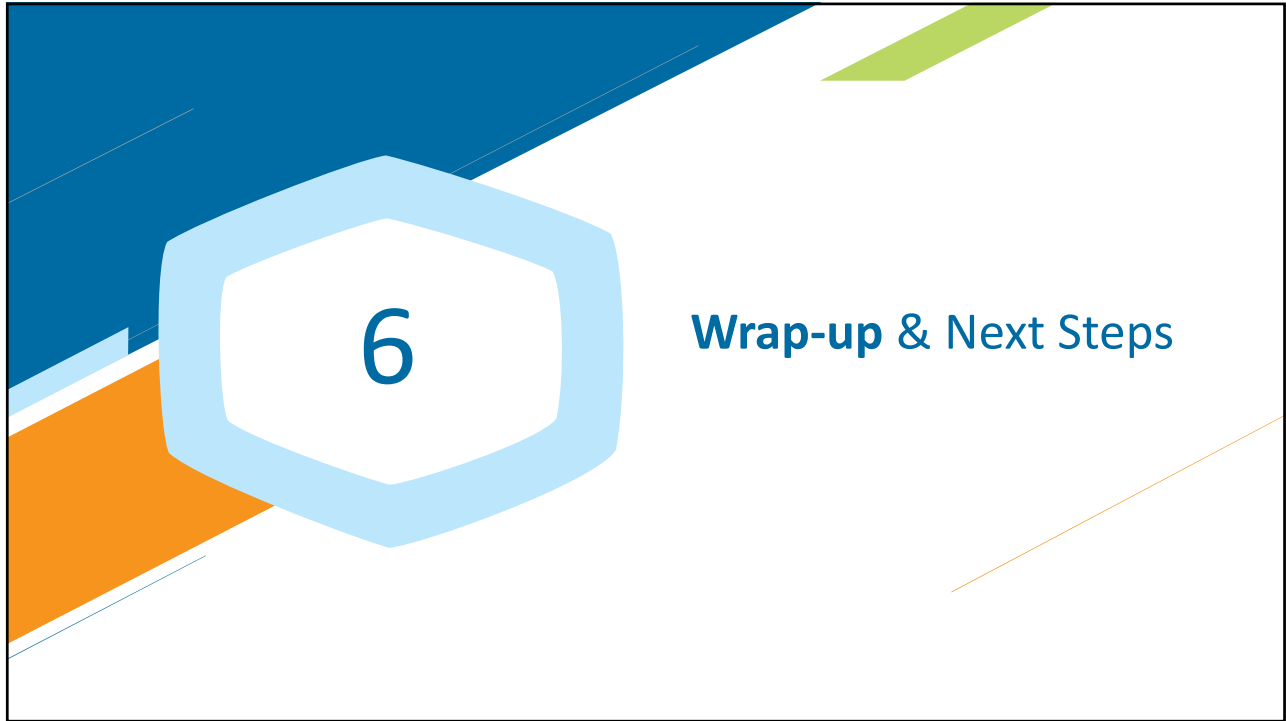


- Are there any specific issues or areas of concern that we should focus on?
- Are there areas within the study area where there should be a focus in growth, redevelopment or densification that would help materialize community vision plans?
- Are there areas that are not likely to change or have attributes that should be protected?

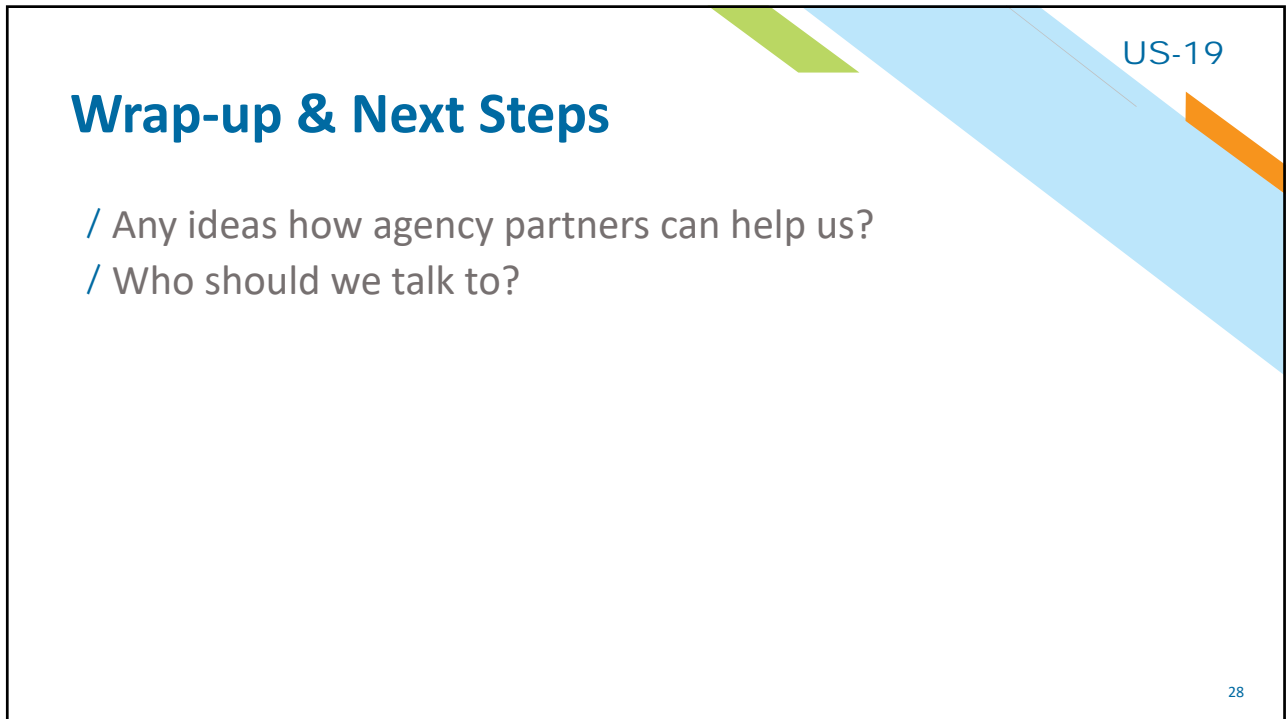
/ **Report Back**

26


26



27



28



US-19

Wrap-up & Next Steps

- Opportunities & Needs Workshop – November 19-20, 2019
- PAG Meeting #2 – Early 2020

29

29



US-19



Questions / Comments

30

US-19

Thank You!



Project Website
[www.fdotd7studies.com/
us19frontageroads](http://www.fdotd7studies.com/us19frontageroads)

Project Team Contacts:

- Alex Henry (FDOT) - Alex.Henry@dot.state.fl.us
- Jennifer Musselman (KAI) - jmusselman@kittelson.com

31



32