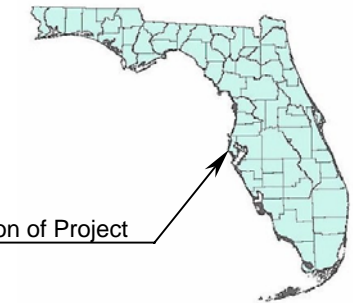


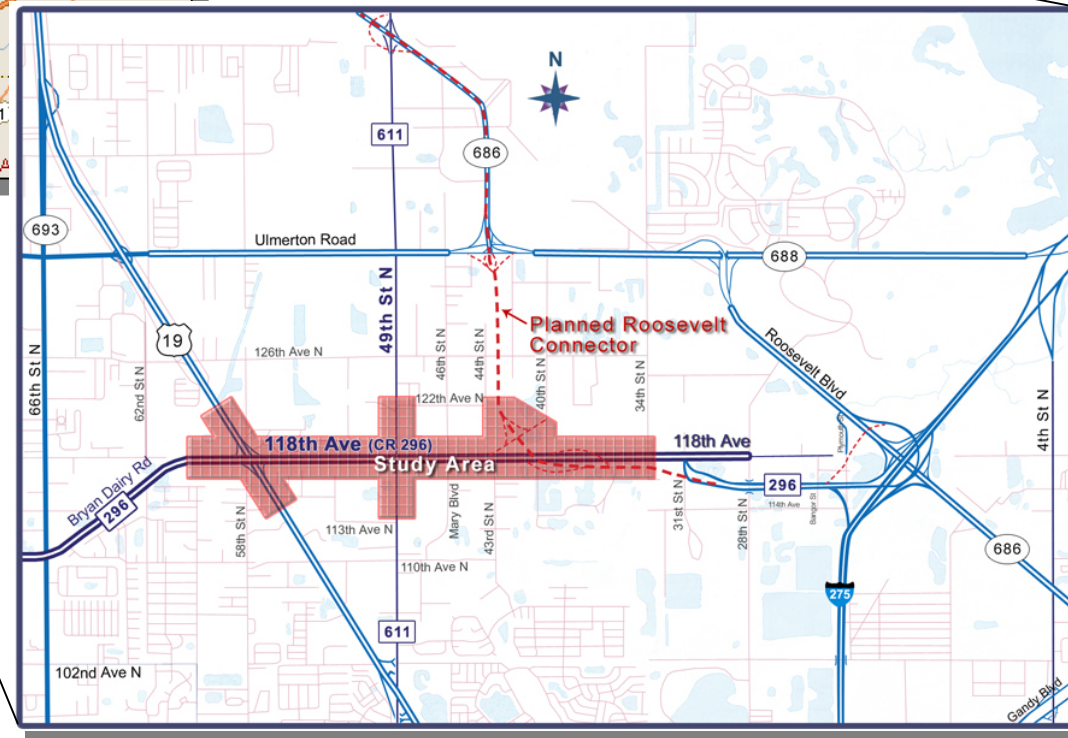
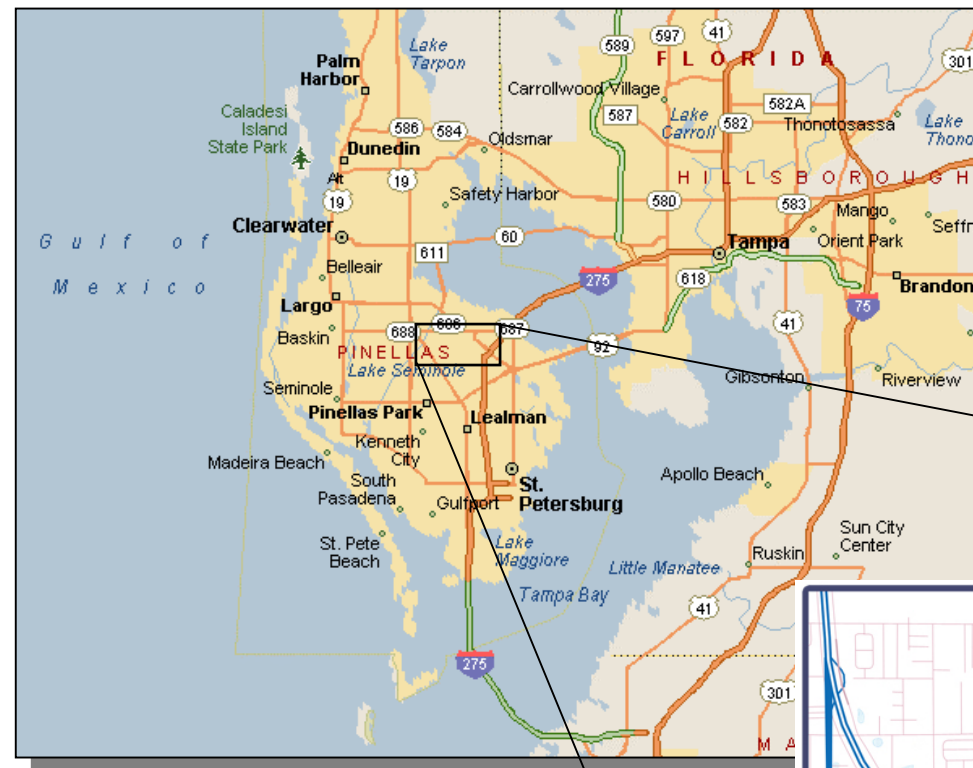
Preliminary Conceptual Design Plans

118th Avenue/CR 296 Connector PD&E Study From US 19 to East of the Roosevelt/CR 296 Connector

WPI Segment Number 413622-1



Location of Project



**Preferred Alternative
(Alt. DmodG) with
Alternative Pond
Sites**



Prepared For:
The Florida Department of Transportation
District Seven Modal Planning and
Development Section

By:

American
Consulting Engineers of Florida, LLC
October 2005

Contents of Plans

<u>Sheet Nos.</u>	<u>Description</u>
1	Key Sheet
2	Sheet Layout and Project Phasing
3	Proposed Typical Sections
4-8	Roadway Plan Sheets
9	Drainage Map
10-11	Preliminary Mainline Profile
12-21	Preliminary Structural Plans (Bridges and MSE Walls)

FDOT Project Manager: Gabor Farkasfalvy



118th Avenue (CR 296) PD&E Study

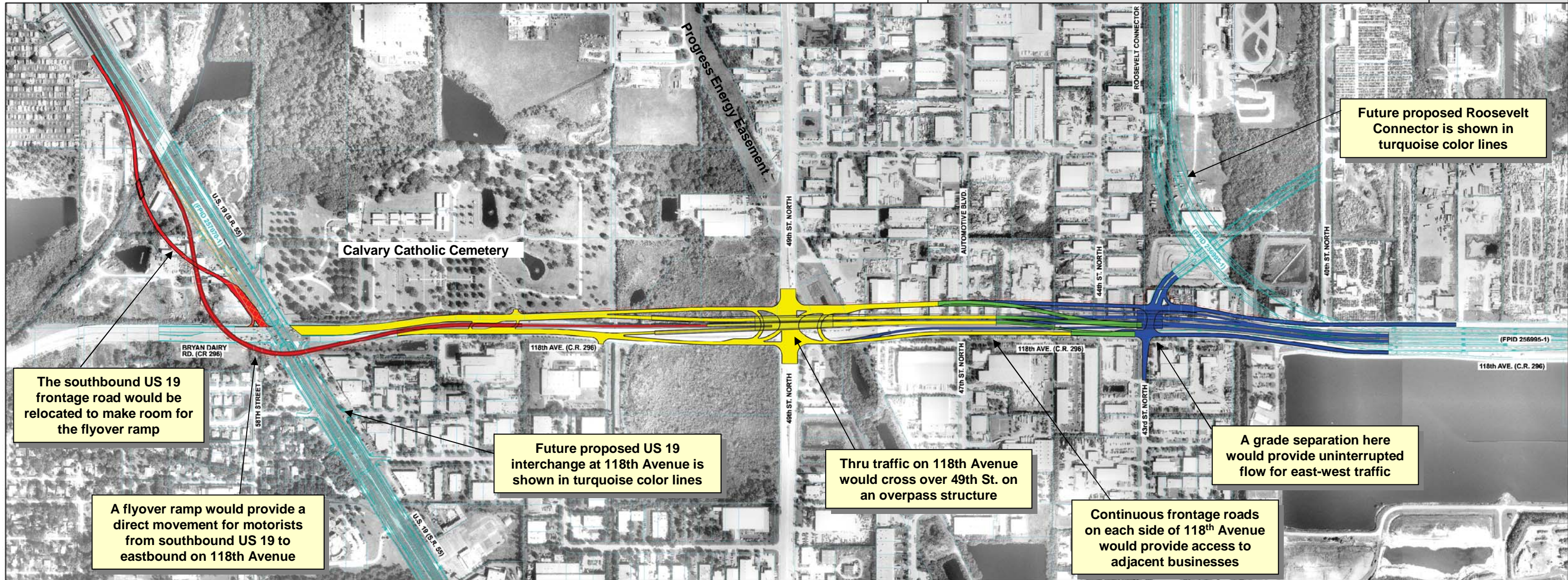
The Recommended Alternative and Potential Project Phasing

The figure below shows a graphic of the Recommended Alternative overlaid on an aerial photograph. It is possible that due to funding availability, and the timing of other future proposed projects, the overall project could be constructed in phases. The graphic is shaded by the three possible phases (yellow, red and blue). The legend at the right and notes below provide highlights of the proposed improvements.

LEGEND		Recommended Alternative	
	49TH ST. OVERPASS PHASE		WORK BY OTHERS
	US 19 FLYOVER PHASE		EXISTING ROW
	ROOSEVELT CONNECTOR PHASE		PROPOSED ROW
	OVERLAP OF 49TH ST. OVERPASS PHASE AND ROOSEVELT CONNECTOR PHASE		
	TO BE REMOVED DURING US 19 FLYOVER PHASE		

SCALE: 1" = 800'
DATE OF AERIAL: OCTOBER 4, 2004

0 200 800
Feet



The southbound US 19 frontage road would be relocated to make room for the flyover ramp

A flyover ramp would provide a direct movement for motorists from southbound US 19 to eastbound on 118th Avenue

Future proposed US 19 interchange at 118th Avenue is shown in turquoise color lines

Thru traffic on 118th Avenue would cross over 49th St. on an overpass structure

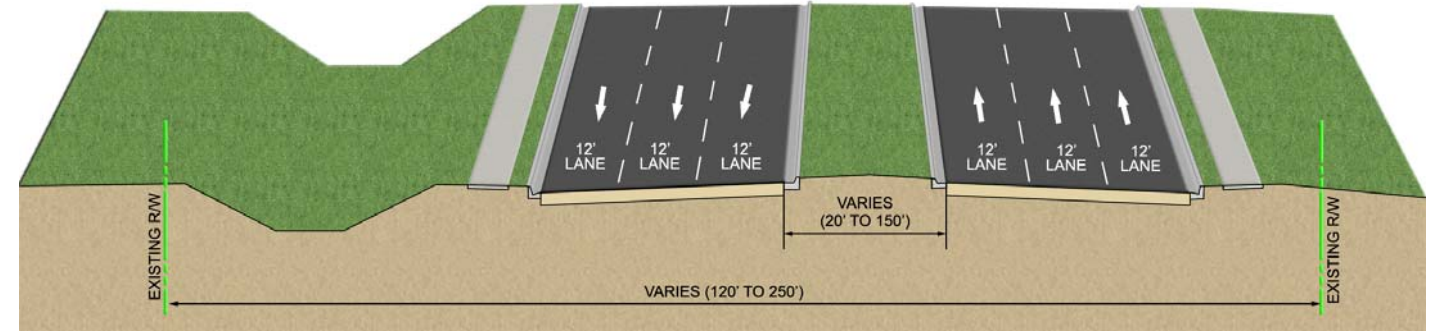
A grade separation here would provide uninterrupted flow for east-west traffic

Continuous frontage roads on each side of 118th Avenue would provide access to adjacent businesses

Future proposed Roosevelt Connector is shown in turquoise color lines

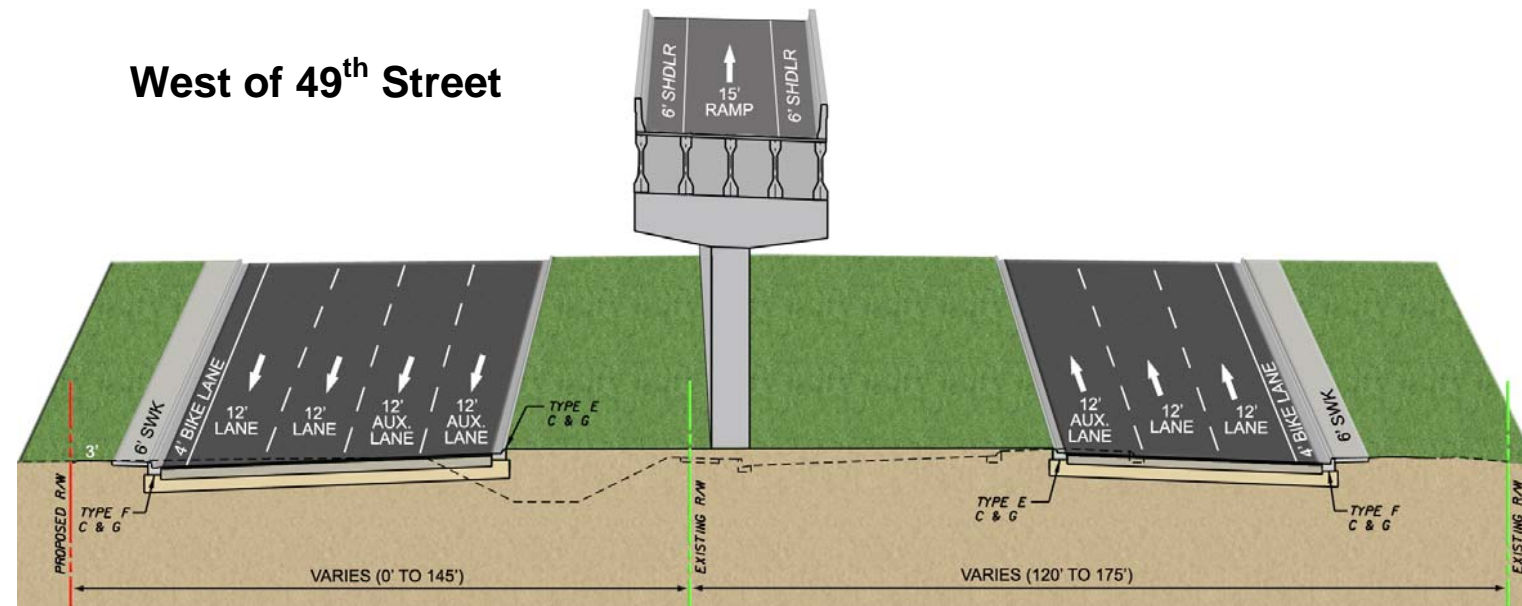


EXISTING TYPICAL SECTION

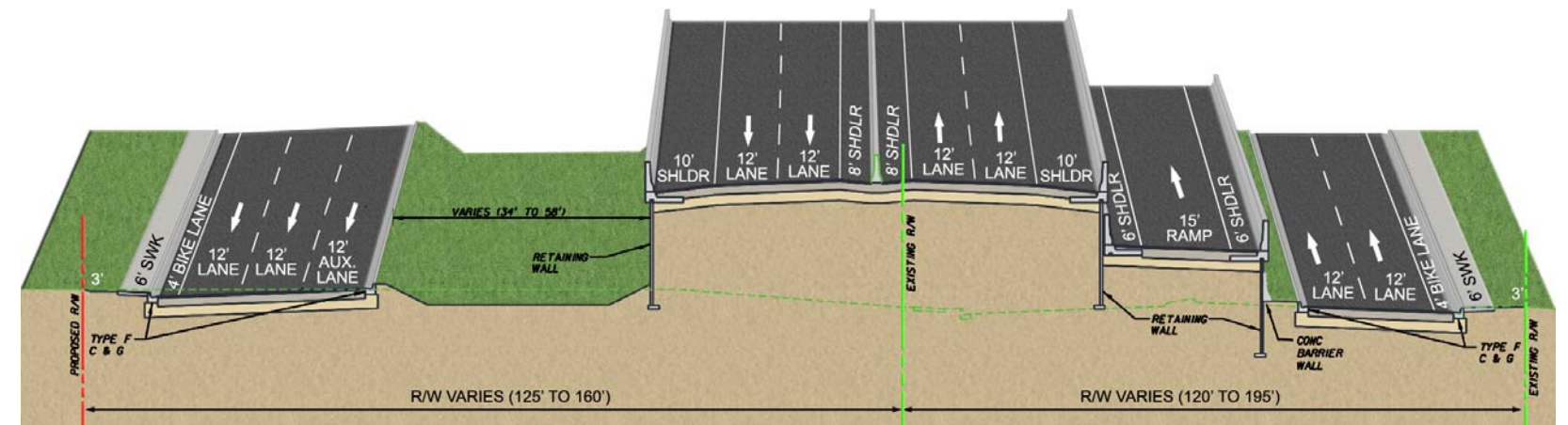


PROPOSED TYPICAL SECTIONS

West of 49th Street

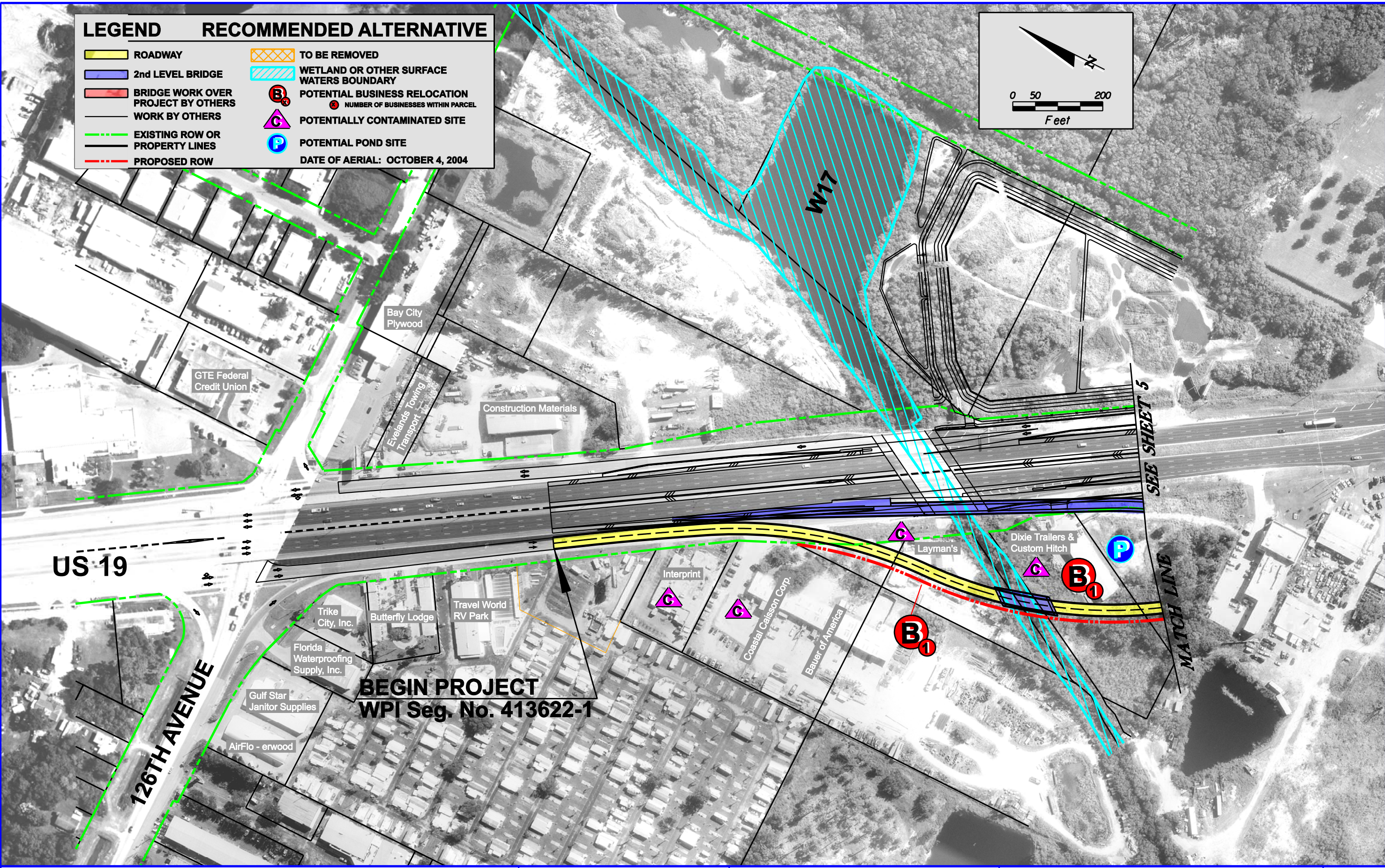
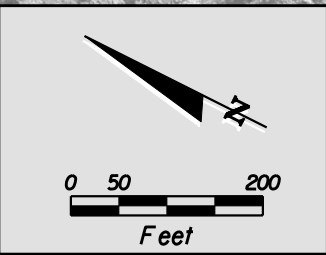


East of 49th Street



REVISIONS						 Consulting Engineers of Florida, LLC 4111 Land O' Lakes Blvd, Suite 210 Land O' Lakes, Florida 34639 Phone: (813) 996-2800 Fax: (813) 996-1908 Certificate of Authorization No. 7110 Jeffrey S. Novotny, P.E. No. 51083	STATE OF FLORIDA DEPARTMENT OF TRANSPORTATION			118TH AVENUE (CR 296) CONNECTOR (FROM US 19 TO EAST OF ROOSEVELT) ALTERNATIVE Dmod-G	SHEET NO. 3
DATE	BY	DESCRIPTION	DATE	BY	DESCRIPTION		ROAD NO.	COUNTY	FINANCIAL PROJECT ID		
						CR 296	PINELLAS	413622-1-22-01			

LEGEND		RECOMMENDED ALTERNATIVE	
	ROADWAY		TO BE REMOVED
	2nd LEVEL BRIDGE		WETLAND OR OTHER SURFACE WATERS BOUNDARY
	BRIDGE WORK OVER PROJECT BY OTHERS		POTENTIAL BUSINESS RELOCATION
	WORK BY OTHERS		NUMBER OF BUSINESSES WITHIN PARCEL
	EXISTING ROW OR PROPERTY LINES		POTENTIALLY CONTAMINATED SITE
	PROPOSED ROW		POTENTIAL POND SITE
			DATE OF AERIAL: OCTOBER 4, 2004



REVISIONS					
DATE	BY	DESCRIPTION	DATE	BY	DESCRIPTION

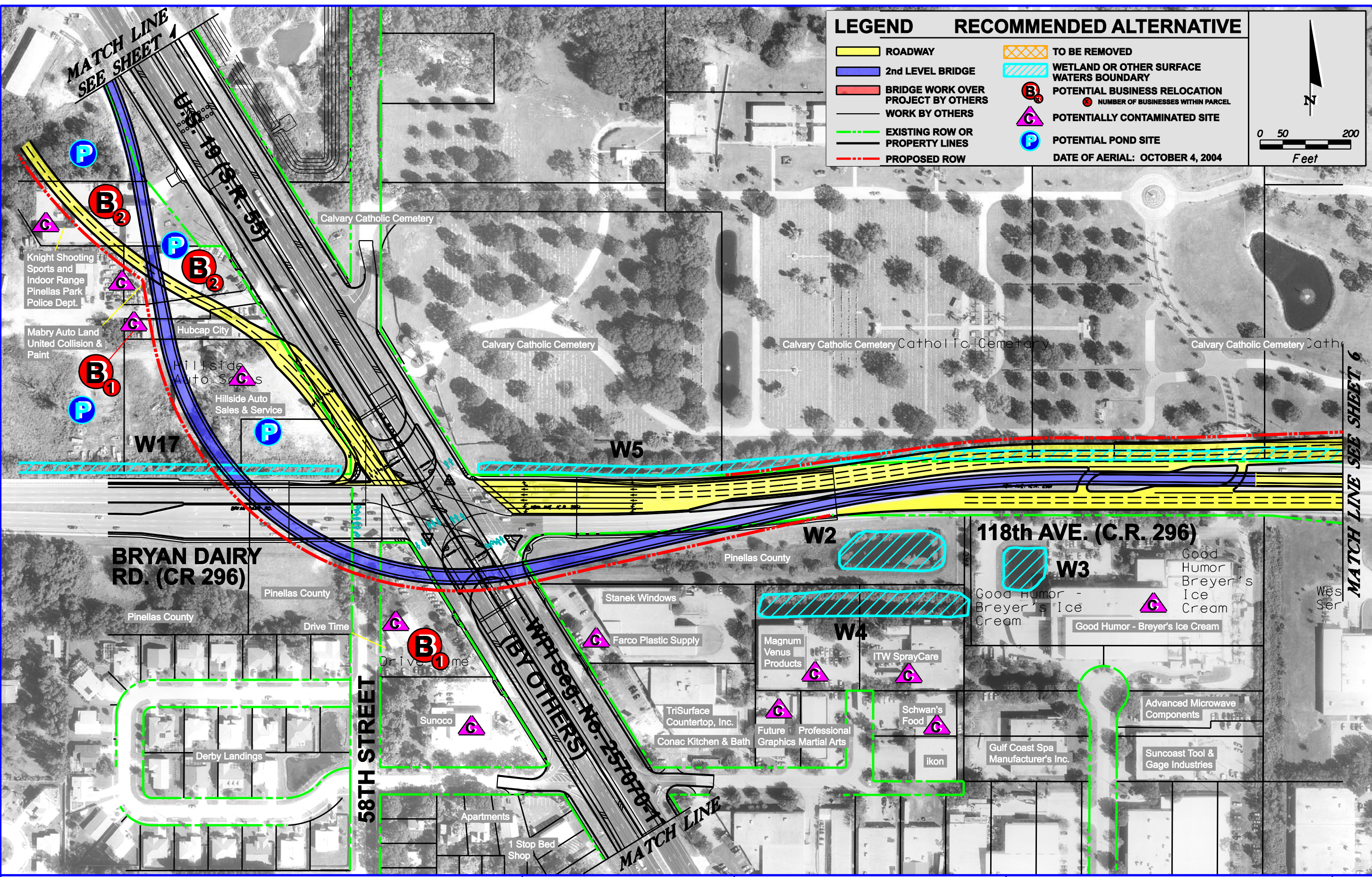
American
 Consulting Engineers of Florida, LLC
 4111 Land O' Lakes Blvd. Suite 210
 Land O' Lakes, Florida 34639
 Phone: (813) 996-2800 Fax: (813) 996-1908
 Certificate of Authorization No. 7110
 Jeffrey S. Novotny, P.E. No. 51083

STATE OF FLORIDA DEPARTMENT OF TRANSPORTATION		
ROAD NO.	COUNTY	FINANCIAL PROJECT ID
CR 296	PINELLAS	413622-1-22-01

**118TH AVENUE (CR 296) CONNECTOR
 PD&E STUDY**

SHEET NO.	4
-----------	---

LEGEND		RECOMMENDED ALTERNATIVE	
	ROADWAY		TO BE REMOVED
	2nd LEVEL BRIDGE		WETLAND OR OTHER SURFACE WATERS BOUNDARY
	BRIDGE WORK OVER PROJECT BY OTHERS		POTENTIAL BUSINESS RELOCATION
	WORK BY OTHERS		NUMBER OF BUSINESSES WITHIN PARCEL
	EXISTING ROW OR PROPERTY LINES		POTENTIALLY CONTAMINATED SITE
	PROPOSED ROW		POTENTIAL POND SITE
		DATE OF AERIAL: OCTOBER 4, 2004	



REVISIONS					
DATE	BY	DESCRIPTION	DATE	BY	DESCRIPTION

American
 Consulting Engineers of Florida, LLC
 4111 Land O' Lakes Blvd. Suite 210
 Land O' Lakes, Florida 34639
 Phone: (813) 996-2800 Fax: (813) 996-1908
 Certificate of Authorization No. 7110
 Jeffrey S. Novotny, P.E. No. 51083

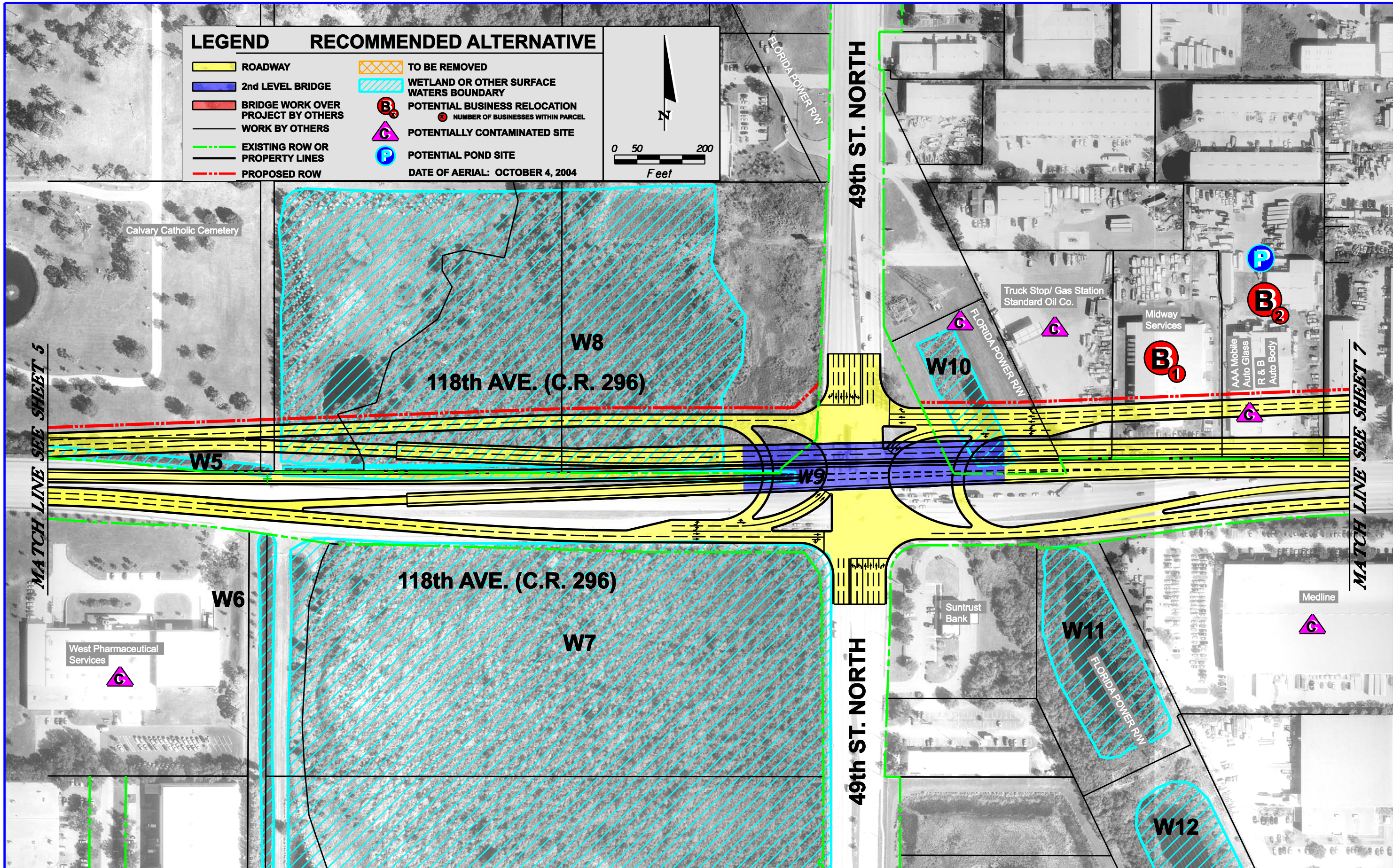
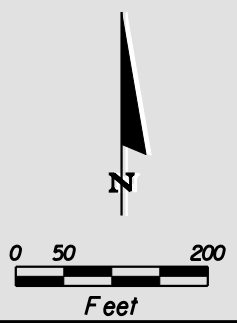
STATE OF FLORIDA DEPARTMENT OF TRANSPORTATION		
ROAD NO.	COUNTY	FINANCIAL PROJECT ID
CR 296	PINELLAS	413622-1-22-01

**118TH AVENUE (CR 296) CONNECTOR
 PD&E STUDY**

SHEET NO.
5

LEGEND **RECOMMENDED ALTERNATIVE**

- ROADWAY
- 2nd LEVEL BRIDGE
- BRIDGE WORK OVER PROJECT BY OTHERS
- WORK BY OTHERS
- EXISTING ROW OR PROPERTY LINES
- PROPOSED ROW
- TO BE REMOVED
- WETLAND OR OTHER SURFACE WATERS BOUNDARY
- B₂ POTENTIAL BUSINESS RELOCATION
- NUMBER OF BUSINESSES WITHIN PARCEL
- C POTENTIALLY CONTAMINATED SITE
- P POTENTIAL POND SITE



REVISIONS					
DATE	BY	DESCRIPTION	DATE	BY	DESCRIPTION

American
 Consulting Engineers of Florida, LLC
 4111 Land O' Lakes Blvd. Suite 210
 Land O' Lakes, Florida 34639
 Phone: (813) 996-2800 Fax: (813) 996-1908
 Certificate of Authorization No. 7110
 Jeffrey S. Novotny, P.E. No. 51083

STATE OF FLORIDA DEPARTMENT OF TRANSPORTATION		
ROAD NO.	COUNTY	FINANCIAL PROJECT ID
CR 296	PINELLAS	413622-1-22-01

**118TH AVENUE (CR 296) CONNECTOR
PD&E STUDY**

SHEET NO. 6

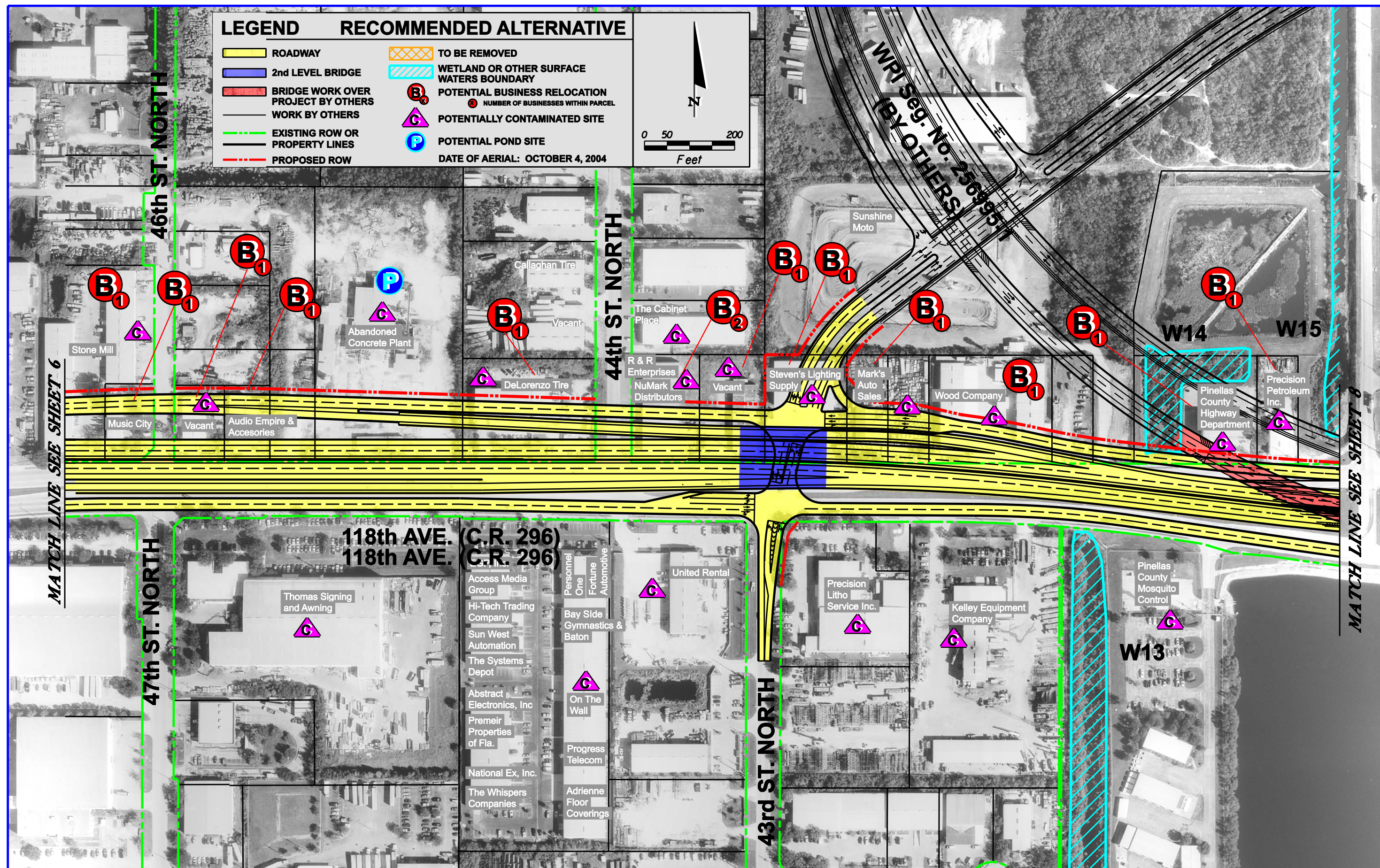
LEGEND

- ROADWAY
- 2nd LEVEL BRIDGE
- BRIDGE WORK OVER PROJECT BY OTHERS
- WORK BY OTHERS
- EXISTING ROW OR PROPERTY LINES
- PROPOSED ROW

RECOMMENDED ALTERNATIVE

- TO BE REMOVED
- WETLAND OR OTHER SURFACE WATERS BOUNDARY
- B₁ POTENTIAL BUSINESS RELOCATION
- B₂ NUMBER OF BUSINESSES WITHIN PARCEL
- C POTENTIALLY CONTAMINATED SITE
- P POTENTIAL POND SITE

DATE OF AERIAL: OCTOBER 4, 2004



MATCH LINE SEE SHEET 6

MATCH LINE SEE SHEET 8

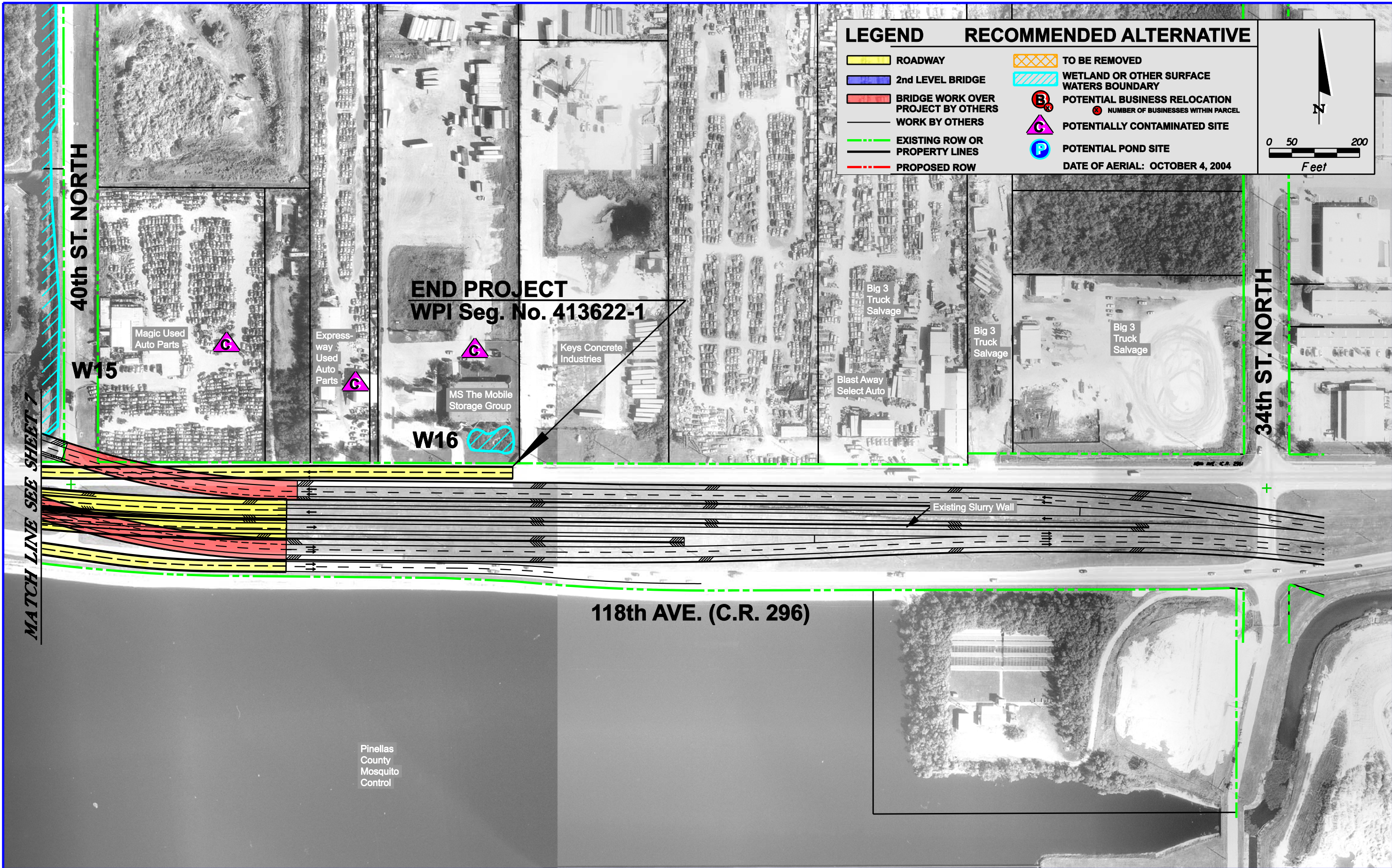
REVISIONS					
DATE	BY	DESCRIPTION	DATE	BY	DESCRIPTION

American
 Consulting Engineers of Florida, LLC
 4111 Land O' Lakes Blvd. Suite 210
 Land O' Lakes, Florida 34639
 Phone: (813) 996-2800 Fax: (813) 996-1908
 Certificate of Authorization No. 7110
 Jeffrey S. Novotny, P.E. No. 51083

STATE OF FLORIDA DEPARTMENT OF TRANSPORTATION		
ROAD NO.	COUNTY	FINANCIAL PROJECT ID
CR 296	PINELLAS	413622-1-22-01

**118TH AVENUE (CR 296) CONNECTOR
PD&E STUDY**

SHEET NO.
7



REVISIONS					
DATE	BY	DESCRIPTION	DATE	BY	DESCRIPTION

American
 Consulting Engineers of Florida, LLC
 4111 Land O' Lakes Blvd. Suite 210
 Land O' Lakes, Florida 34639
 Phone: (813) 996-2800 Fax: (813) 996-1908
 Certificate of Authorization No. 7110
 Jeffrey S. Novotny, P.E. No. 51083

STATE OF FLORIDA DEPARTMENT OF TRANSPORTATION		
ROAD NO.	COUNTY	FINANCIAL PROJECT ID
CR 296	PINELLAS	413622-1-22-01

**118TH AVENUE (CR 296) CONNECTOR
 PD&E STUDY**

SHEET NO.
8