

1"=1000'

LEGEND

- — — BASIN DIVIDE
- — — EXISTING DRAINAGE STRUCTURE
- — — EXISTING ROW
- — — PROPERTY LINES
- WETLAND AND OTHER SURFACE WATERS BOUNDRY
- CBC = CONCRETE BOX CULVERT**
- RCP = REINFORCED CONCRETE PIPE**

DATE OF AERIAL: October 4, 2004
 SOURCE: Field Reviews and drainage maps prepared by URS/Greiner in 1990 & 1991.

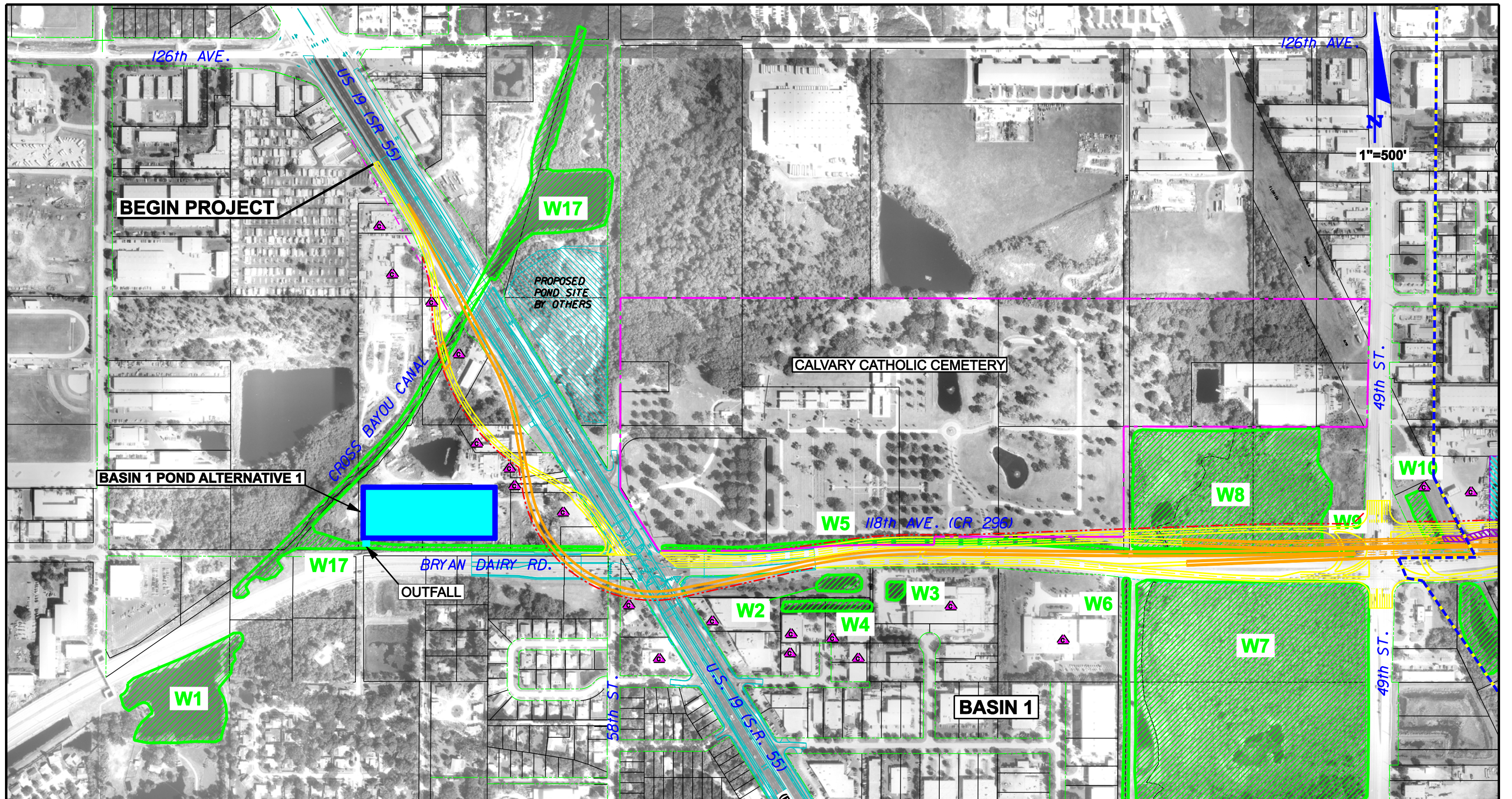
REVISIONS					
DATE	BY	DESCRIPTION	DATE	BY	DESCRIPTION

American
 Consulting Engineers of Florida, LLC
 4111 Land O' Lakes Blvd, Suite 210
 Land O' Lakes, Florida 34639
 Phone: (813) 996-2800 Fax: (813) 996-1908
 Certificate of Authorization No. 7110
 Jeffrey S. Novotny, P.E. No. 51083

STATE OF FLORIDA DEPARTMENT OF TRANSPORTATION		
ROAD NO.	COUNTY	FINANCIAL PROJECT ID
CR 296	PINELLAS	413622-1-22-01

**118TH AVENUE (CR 296)
 EXISTING DRAINAGE MAP**

FIGURE NO.
CI



LEGEND		ALTERNATIVE Dmod-G	
	ROADWAY		POTENTIALLY CONTAMINATED SITES
	BRIDGE OR ELEVATED SECTION		WETLAND AND OTHER SURFACE WATERS BOUNDARY
	EXISTING ROW		POTENTIAL POND SITE
	PROPERTY LINES		20' BERM
	PROPOSED ROW		CEMETERY PROPERTY
	BASIN BOUNDARY		DATE OF AERIAL: October 4, 2004

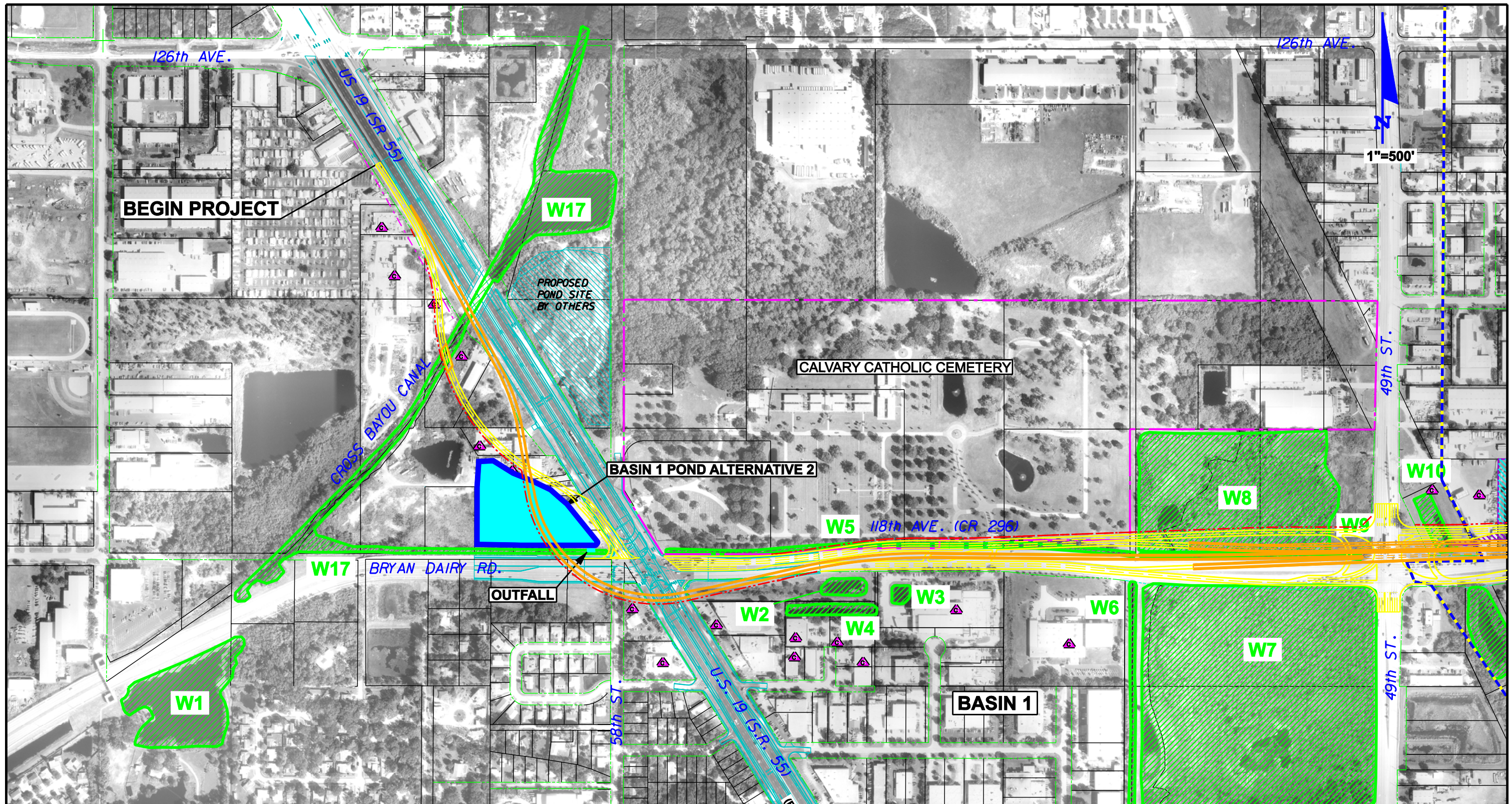
REVISIONS					
DATE	BY	DESCRIPTION	DATE	BY	DESCRIPTION

American
 Consulting Engineers of Florida, LLC
 4111 Land O' Lakes Blvd, Suite 210
 Land O' Lakes, Florida 34639
 Phone: (813) 996-2800 Fax: (813) 996-1908
 Certificate of Authorization No. 7110
 Jeffrey S. Novotny, P.E. No. 51083

STATE OF FLORIDA DEPARTMENT OF TRANSPORTATION		
ROAD NO.	COUNTY	FINANCIAL PROJECT ID
CR 296	PINELLAS	413622-1-22-01

**118TH AVENUE (CR 296)
ALTERNATIVE POND SITES**

FIGURE
C2



LEGEND		ALTERNATIVE Dmod-G	
	ROADWAY		POTENTIALLY CONTAMINATED SITES
	BRIDGE OR ELEVATED SECTION		WETLAND AND OTHER SURFACE WATERS BOUNDARY
	EXISTING ROW		POTENTIAL POND SITE
	PROPERTY LINES		20' BERM
	PROPOSED ROW		CEMETERY PROPERTY
	BASIN BOUNDARY		DATE OF AERIAL: October 4, 2004

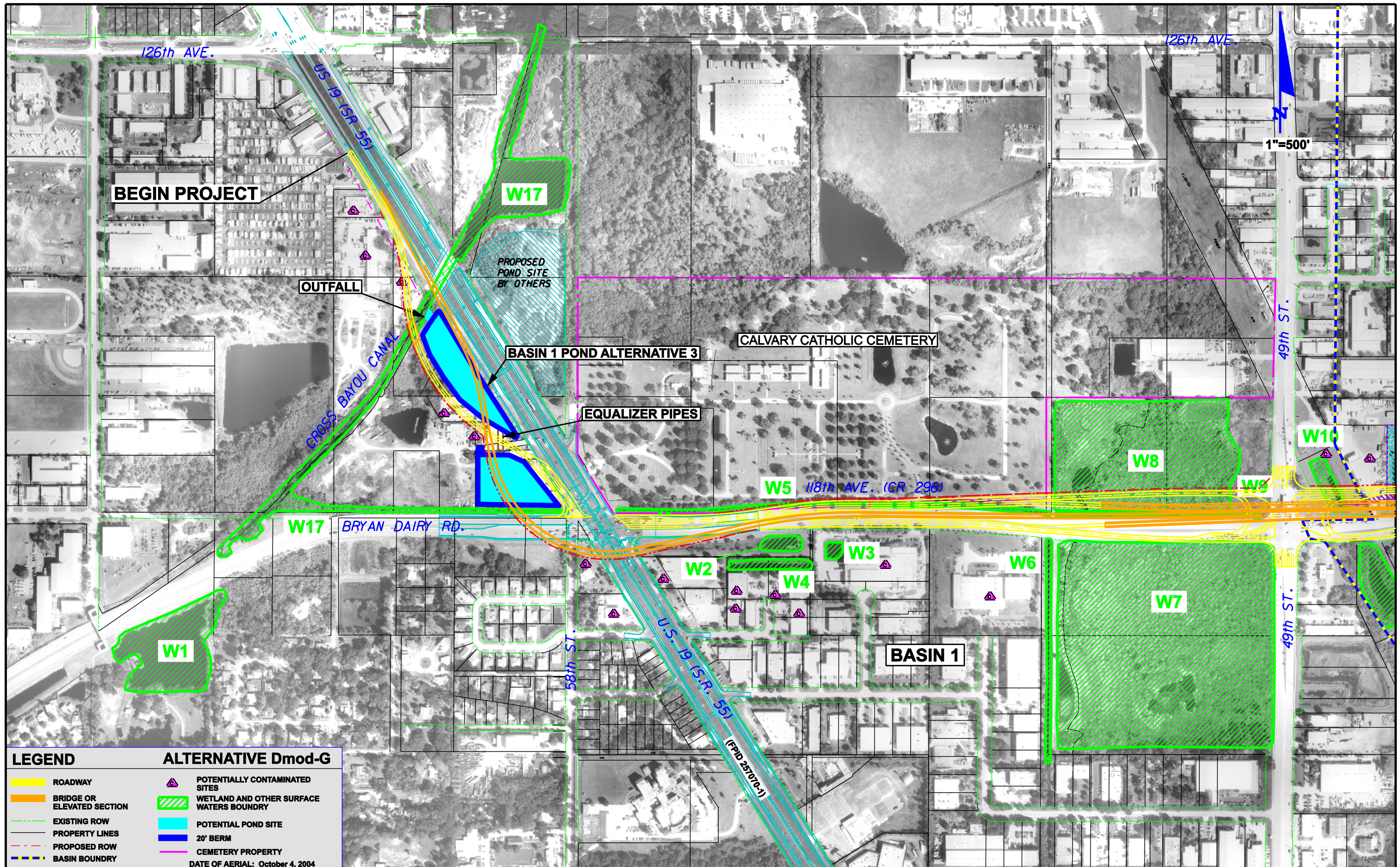
REVISIONS					
DATE	BY	DESCRIPTION	DATE	BY	DESCRIPTION

American
 Consulting Engineers of Florida, LLC
 4111 Land O' Lakes Blvd, Suite 210
 Land O' Lakes, Florida 34639
 Phone: (813) 996-2800 Fax: (813) 996-1908
 Certificate of Authorization No. 7110
 Jeffrey S. Novotny, P.E. No. 51083

STATE OF FLORIDA DEPARTMENT OF TRANSPORTATION		
ROAD NO.	COUNTY	FINANCIAL PROJECT ID
CR 296	PINELLAS	413622-1-22-01

**118TH AVENUE (CR 296)
ALTERNATIVE POND SITES**

FIGURE
C3



LEGEND		ALTERNATIVE Dmod-G	
	ROADWAY		POTENTIALLY CONTAMINATED SITES
	BRIDGE OR ELEVATED SECTION		WETLAND AND OTHER SURFACE WATERS BOUNDARY
	EXISTING ROW		POTENTIAL POND SITE
	PROPERTY LINES		20' BERM
	PROPOSED ROW		CEMETERY PROPERTY
	BASIN BOUNDARY		

DATE OF AERIAL: October 4, 2004

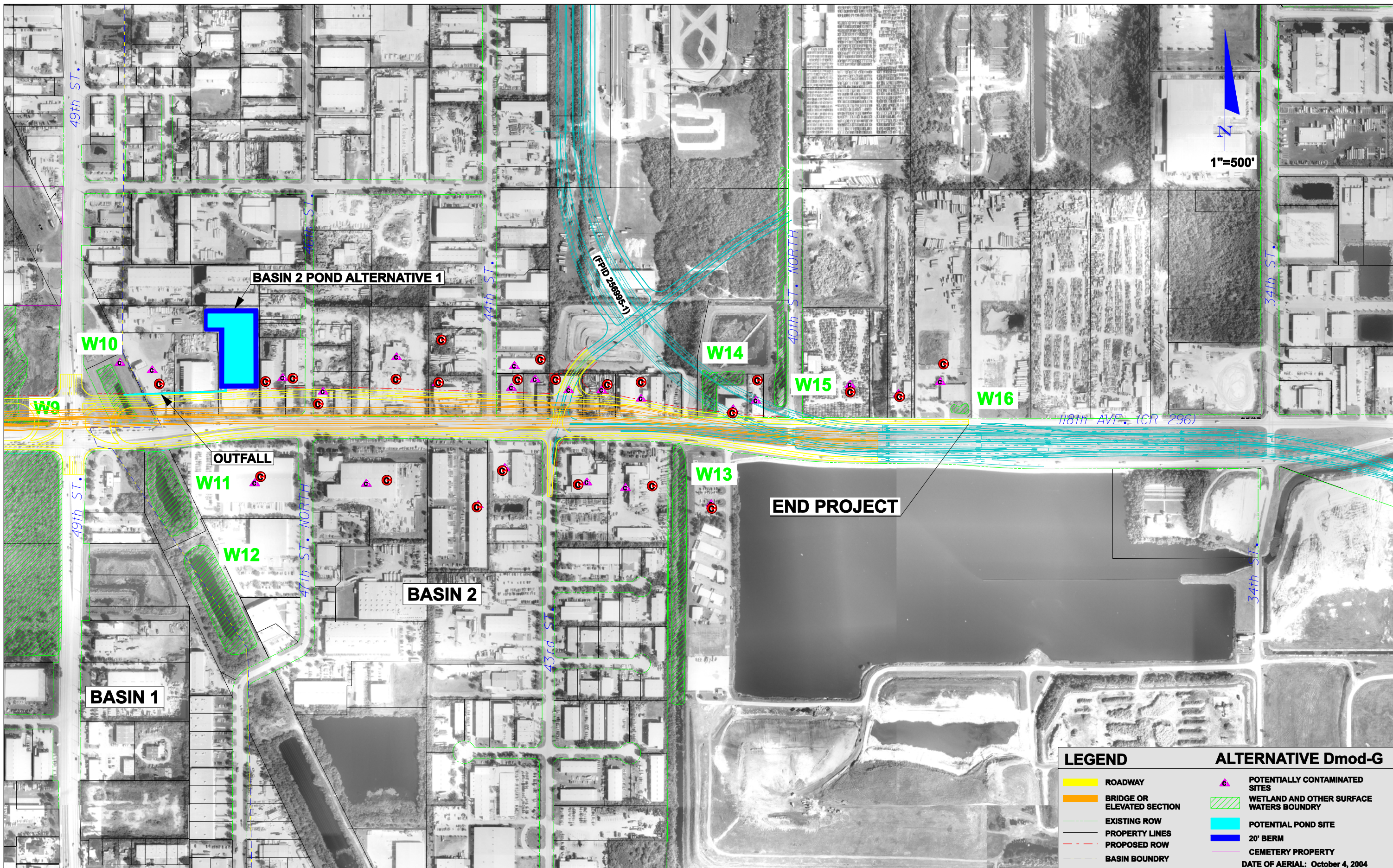
REVISIONS					
DATE	BY	DESCRIPTION	DATE	BY	DESCRIPTION

American
 Consulting Engineers of Florida, LLC
 4111 Land O' Lakes Blvd, Suite 210
 Land O' Lakes, Florida 34639
 Phone: (813) 996-2800 Fax: (813) 996-1908
 Certificate of Authorization No. 7110
 Jeffrey S. Novotny, P.E. No. 51083

STATE OF FLORIDA DEPARTMENT OF TRANSPORTATION		
ROAD NO.	COUNTY	FINANCIAL PROJECT ID
CR 296	PINELLAS	413622-1-22-01

**118TH AVENUE (CR 296)
ALTERNATIVE POND SITES**

FIGURE
C4



LEGEND		ALTERNATIVE Dmod-G	
	ROADWAY		POTENTIALLY CONTAMINATED SITES
	BRIDGE OR ELEVATED SECTION		WETLAND AND OTHER SURFACE WATERS BOUNDARY
	EXISTING ROW		POTENTIAL POND SITE
	PROPERTY LINES		20' BERM
	PROPOSED ROW		CEMETERY PROPERTY
	BASIN BOUNDARY		DATE OF AERIAL: October 4, 2004

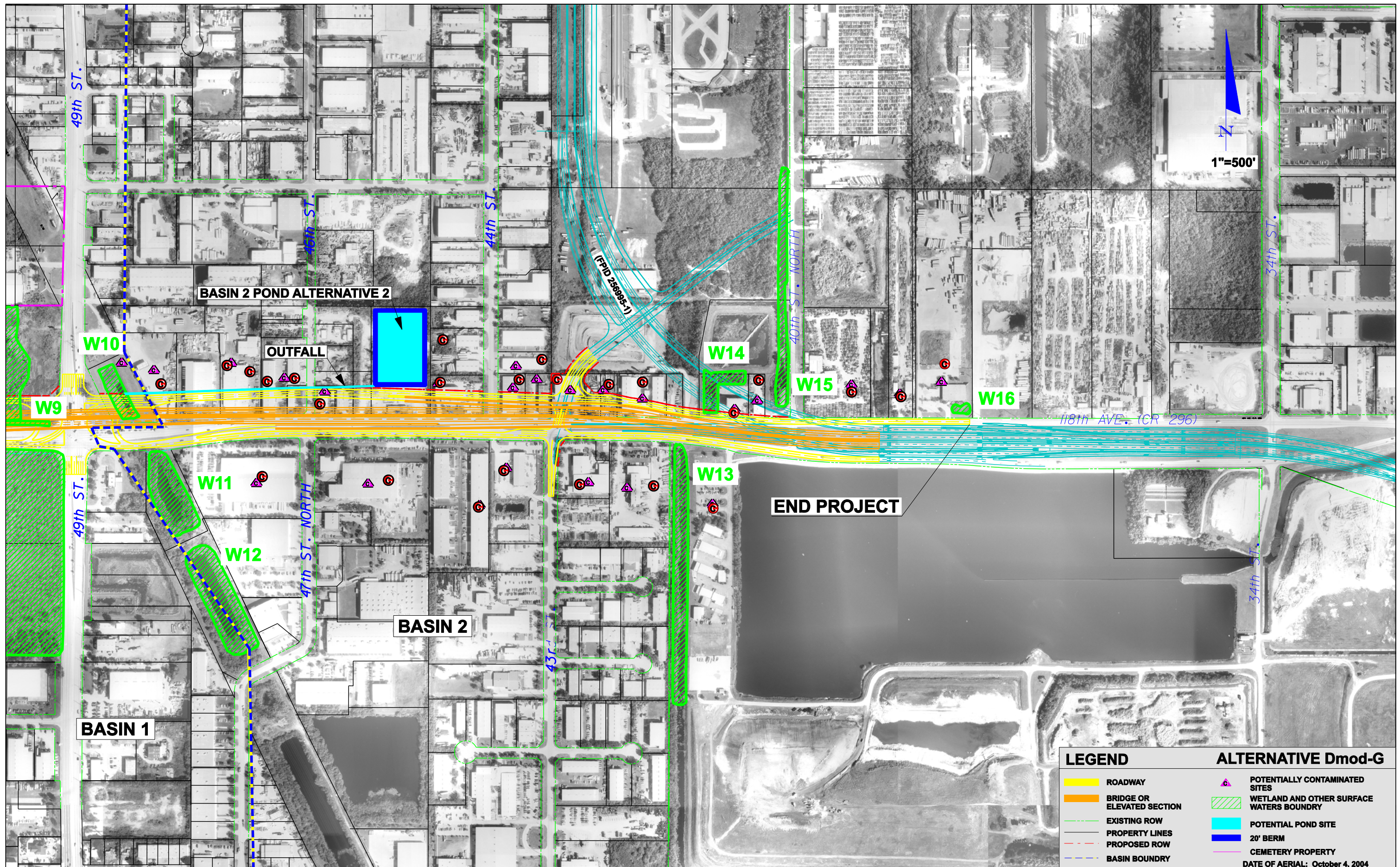
REVISIONS					
DATE	BY	DESCRIPTION	DATE	BY	DESCRIPTION

American
 Consulting Engineers of Florida, LLC
 4111 Land O' Lakes Blvd, Suite 210
 Land O' Lakes, Florida 34639
 Phone: (813) 996-2800 Fax: (813) 996-1908
 Certificate of Authorization No. 7110
 Jeffrey S. Novotny, P.E. No. 51083

STATE OF FLORIDA DEPARTMENT OF TRANSPORTATION		
ROAD NO.	COUNTY	FINANCIAL PROJECT ID
CR 296	PINELLAS	413622-1-22-01

**118TH AVENUE (CR 296)
 ALTERNATIVE POND SITES**

FIGURE
C5



REVISIONS					
DATE	BY	DESCRIPTION	DATE	BY	DESCRIPTION

American
 Consulting Engineers of Florida, LLC
 4111 Land O' Lakes Blvd, Suite 210
 Land O' Lakes, Florida 34639
 Phone: (813) 996-2800 Fax: (813) 996-1908
 Certificate of Authorization No. 7110
 Jeffrey S. Novotny, P.E. No. 51083

STATE OF FLORIDA DEPARTMENT OF TRANSPORTATION		
ROAD NO.	COUNTY	FINANCIAL PROJECT ID
CR 296	PINELLAS	413622-1-22-01

**118TH AVENUE (CR 296)
ALTERNATIVE POND SITES**

FIGURE
C6

01/09/2006 07:02:32 AM F:\Project\5037118\drainage\PondS11ing2.dgn