

**FINAL
ENDANGERED SPECIES EVALUATION REPORT**

**GANDY BOULEVARD (SR 694) PD&E STUDY
FROM WEST OF US 19 TO EAST OF 4th STREET
PINELLAS COUNTY**

**Work Program Item Segment No: 256931 1
Federal Aid Project No: N/A**

**This project evaluates improvement alternatives for Gandy Boulevard (SR 694)
from west of US 19 to east of 4th Street
Pinellas County, Florida.**

Prepared for:

**Florida Department of Transportation
District Seven
11201 North McKinley Drive
Tampa, Florida 33612-6456**

May 2002

TABLE OF CONTENTS

1.0	INTRODUCTION	1
2.0	PURPOSE	1
3.0	PROJECT DESCRIPTION	3
4.0	ENVIRONMENTAL CHARACTERISTICS AND SURVEY RESULTS	4
5.0	REFERENCES	7

LIST OF FIGURES

Figure 1	Project Location Map	2
-----------------	-----------------------------	----------

LIST OF TABLES

Table 1	Protected Fauna/Flora Which May Occur Within the Project Study Area	5
Table 2	Protected Fauna/Flora Observed in the Study Area	6

LIST OF APPENDICES

APPENDIX A	AGENCY COORDINATION LETTERS
APPENDIX B	CONCEPTUAL PLANS

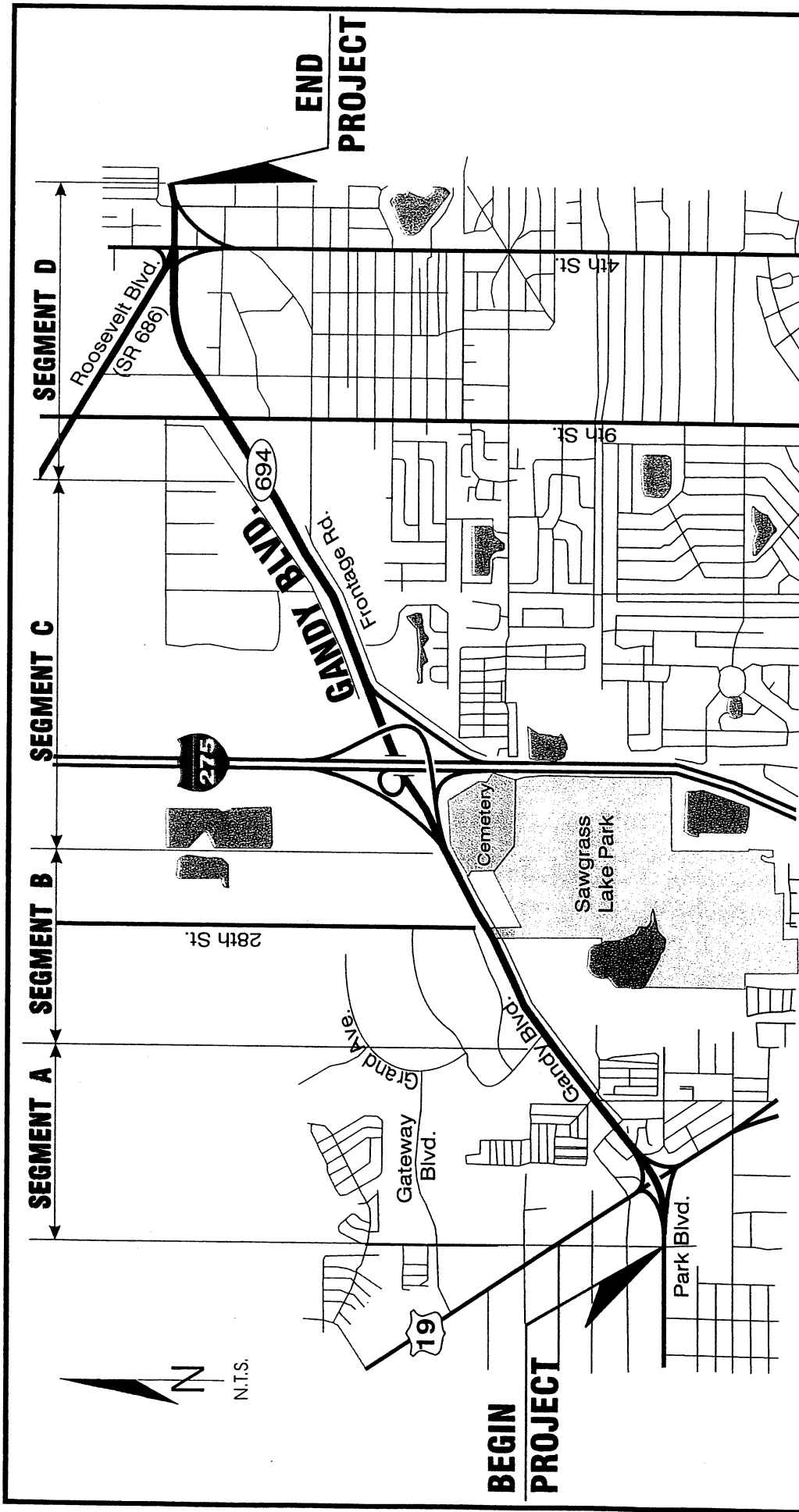
1.0 INTRODUCTION

The Florida Department of Transportation (FDOT) is conducting a Project Development and Environment (PD&E) Study to evaluate improvement alternatives along Gandy Boulevard (SR 694) from west of US 19 to east of 4th Street in the cities of Pinellas Park and St. Petersburg in Pinellas County, Florida. The project location map in Figure 1 illustrates the location and limits of the Study.

2.0 PURPOSE

The objective of the PD&E Study is to provide documented environmental and engineering analyses, which will help the FDOT and the Federal Highway Administration (FHWA) reach a decision on the type, conceptual design, and location of the necessary improvements along the Gandy Boulevard (SR 694) corridor to accommodate future transportation needs in a safe and efficient manner.

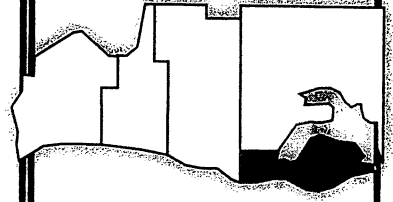
This report documents the need for the project and presents the procedures used to develop and evaluate various improvement alternatives as they relate to the transportation facility. Engineering data and information about the environmental characteristics of the area, which are essential to the alignment and analytical decision-making process, has been collected as part of the 1996 Gandy Major Investment Study (MIS) and is being updated as necessary. Once sufficient data is available, alignment criteria will be used to refine the alternatives. The comparison of alternatives is to be based on a variety of parameters using a matrix format outlined in the MIS Study Screen Two Evaluation Report and other factors identified during this Study effort. The MIS Study identified the alternative that will have the least impact while providing the necessary improvements and is being refined in the PD&E Study phase along with the No-Build option.



LEGEND

- Segment A: West of US 19 to west of Grand Ave.
- Segment B: West of Grand Avenue to west of I-275
- Segment C: West of I-275 to west of 9th Street
- Segment D: West of 9th Street to east of 4th Street

PROJECT LOCATION MAP



FLORIDA DEPARTMENT OF TRANSPORTATION

GANDY BOULEVARD (SR 694)

PD&E STUDY

From West of US 19 to
East of 4th Street

Pinellas County, Florida



WPI SEG NO: 256931 1

FIGURE 1

3.0 PROJECT DESCRIPTION

Through the PD&E Study process, the FDOT is evaluating the improvement alternatives along the Gandy Boulevard (SR 694) corridor. The Gandy Boulevard (SR 694) corridor is primarily an east/west facility, which in its entirety, extends from a western terminus at Gulf Boulevard in Pinellas County to an eastern terminus at Bayshore Boulevard in Hillsborough County. The Gandy Boulevard (SR 694) corridor is functionally classified as an east/west principal urban arterial highway and is part of the Florida Intrastate Highway System (FIHS). The facility also serves as a major hurricane evacuation route for residents in Pinellas County. The proposed PD&E Study limits encompass the portion of Gandy Boulevard (SR 694) from west of the US 19/Gandy Boulevard (SR 694) interchange to east of 4th Street and include proposed interchanges at: 4th Street and Gandy Boulevard (SR 694); 9th Street and Gandy Boulevard (SR 694); and interchange improvements at I-275. The total length of the Study is approximately 3.9 miles. This project has been evaluated in the MIS, which was initiated in 1996.

For PD&E Studies, projects are divided into segments based on the existing land use, interchange locations, and projected traffic volumes for the design year. Because the portion of Gandy Boulevard (SR 694) from west of US 19 to east of 4th Street contains similar land use characteristics and projected traffic volumes, this project will be divided into four segments based on the new interchanges that are proposed in the corridor. The segments of the project are identified as follows:

- Segment A: West of US 19 to west of Grand Avenue
- Segment B: West of Grand Avenue to west of I-275
- Segment C: West of I-275 to west of 9th Street
- Segment D: West of 9th Street to east of 4th Street

4.0 ENVIRONMENTAL CHARACTERISTICS AND SURVEY RESULTS

The proposed roadway improvements will occur within the existing FDOT right-of-way (ROW), with the exception of stormwater facilities that will require additional ROW acquisition. No native habitat exists within the existing FDOT ROW. Parsons Brinckerhoff Quade & Douglas, Inc., Post Buckley, Schuh & Jernigan, Inc. and FDOT biologists surveyed the study corridor for the presence of listed species. Field inspections were conducted during the Summer and Fall of 2000 and revisited in October of 2001. The following information documents the results of the field reconnaissances.

Based on available information from the Florida Geographic Data Library, a comprehensive GIS database, there are no known occurrences of federally or State protected species within the project corridor. Additionally, Florida Fish and Wildlife Conservation Commission's (FFWCC) Florida's Atlas of Breeding Sites for Herons and their Allies was reviewed. This review concluded that no established breeding sites were within the project study limits.

Reviews of the Florida Natural Areas Inventory (FNAI) Species and Natural Community Summary for Pinellas County, United States Fish and Wildlife Service (USFWS) Endangered Species List, and FFWCC's *Florida's Endangered Species, Threatened Species and Species of Special Concern Official List* were also conducted. Since the project is located within the landward extent of Pinellas County, all marine species that occur in the County have not been included in the analysis. Other species listed include the American alligator (*Alligator mississippiensis*), roseate spoonbill (*Ajaia ajaja*), limpkin (*Aramus guarauna*), little blue heron (*Egretta caerulea*), reddish egret (*Egretta rufescens*), snowy egret (*Egretta thula*), tricolored heron (*Egretta tricolor*), white ibis (*Eudocimus albus*), wood stork (*Mycteria americana*), brown pelican (*Pelecanus occidentalis*), and golden leather fern (*Acrostichum aureum*). Table 1 presents the potentially occurring protected species within the project study area.

Table 1 Protected Fauna/Flora Which May Occur Within the Project Study Area

SCIENTIFIC NAME	COMMON NAME	USFWS	FFWCC	FDACS
AVIAN				
<i>Ajaia ajaja</i>	Roseate spoonbill	-	SSC	
<i>Aramus guarauna</i>	Limpkin	-	SSC	
<i>Egretta caerulea</i>	Little blue heron	-	SSC	
<i>Egretta rufescens</i>	Reddish egret	-	SSC	
<i>Egretta thula</i>	Snowy egret	-	SSC	
<i>Egretta tricolor</i>	Tricolored heron	-	SSC	
<i>Eudocimus albus</i>	White ibis	-	SSC	
<i>Haliaeetus leucocephalus</i>	Bald Eagle	T	T	
<i>Mycteria americana</i>	Wood stork	E	E	
<i>Pelecanus occidentalis</i>	Brown pelican	-	SSC	
REPTILES AND AMPHIBIANS				
<i>Alligator mississippiensis</i>	American alligator	T (S/A)	SSC	
PLANTS				
<i>Acrostichum aureum</i>	Golden leather fern			E
USFWS = United States Fish and Wildlife Service FFWCC = Florida Fish and Wildlife Conservation Commission FDACS = Florida Department of Agriculture and Consumer Services		E = Endangered T = Threatened SSC = Species of Special Concern T (S/A) = Threatened (Similarity of Appearance to American Crocodile)		

The only federally protected species observed within the project limits was the wood stork. This species was only observed foraging in a man made canal. Because foraging is considered a transient behavior and no rookeries are in the vicinity of the project, the wood stork will not be affected with the proposed roadway improvements.

All other protected species observed during the surveys are protected by the FFWCC (see Table 2). These wading birds were observed foraging within the project study area during the field inspections; however, no rookeries are in the project vicinity. The proposed road improvements will not affect any protected wading bird species or their rookeries.

Table 2 Protected Fauna/Flora Observed in the Study Area

SCIENTIFIC NAME	WETLAND LOCATION	COMMON NAME	USFWS	FFWCC	FDACS
FAUNA					
<i>Egretta caerulea</i>	N31	Little blue heron	-	SSC	
<i>Eudocimus albus</i>	N31	White ibis	-	SSC	
<i>Mycteria americana</i>	N1	Wood stork	E	E	
FLORA					
<i>Acrostichum danaeifolium</i>	N33, N40	Giant leather fern			C
USFWS = United States Fish and Wildlife Service			E = Endangered		
FFWCC = Florida Fish and Wildlife Conservation Commission			SSC = Species of Special Concern		
FDACS = Florida Department of Agriculture and Consumer Services			C=Common		

The FFWCC was contacted for its information regarding the occurrence of any bald eagle nests within the project study area. In a letter dated June 12, 2000, FFWCC indicated nest PI 021 within 1 mile of the project site. The coordination letter, nest location and management zone limits are included in Appendix A. This eagle nest will not be affected by the proposed project because the project is located beyond both nest management zones.

The project study area was evaluated for the potential of affecting designated Critical Habitat as defined by the USFWS. No critical habitat designated for protected species occurs within the project corridor; therefore, there is "no involvement" with listed species Critical Habitat.

In conclusion, no threatened and/or endangered species will be affected by this project based on review of current species literature, FNAI, FFWCC and USFWS databases for Pinellas County, field surveys, and coordination with the FFWCC. Therefore, the SR 694 (Gandy Boulevard) improvements evaluated for this PD&E Study will not affect listed species or their critical habitats.

5.0 REFERENCES

- Farrand, John Jr. 1988. An Audubon Handbook: Eastern Birds. McGraw-Hill, Inc. 496 pp.
- Florida Department of Transportation. 1985. Florida Land Use, Cover and Forms Classification System. Second Edition. 81 pp.
- Florida Game and Freshwater Fish Commission. 1991. Florida Atlas of Breeding Sites for Herons and their Allies. Non-Game Wildlife Program Technical Report No. 10.
- Florida Game and Freshwater Fish Commission. 1997. Florida's Endangered Species, Threatened Species and Species of Special Concern, Official Lists. 15 pp.
- Florida Natural Areas Inventory. 1999. FNAI Element Occurrence Records on or Near Site
- Humphrey, S.R. (ed.). 1992. Rare and Endangered Biota of Florida. Volume 1, Mammals. University Presses of Florida. 392 pp.
- Kale, H.S. II (ed.) 1996. Rare and Endangered Biota of Florida. Volume II, Birds. University Presses of Florida. 688 pp.
- Moler, P.E. (ed.) 1992. Rare and Endangered Biota of Florida. Volume III, Amphibians and Reptiles. University Presses of Florida. 291 pp.
- Rodgers, J. A., H. W. Kale, and H., T. Smith. 1996. Rare and Endangered Biota of Florida Vol. V, Birds. University Presses of Florida. 688 pp.
- United States Fish and Wildlife Service, Threatened and Endangered Species System (TESS), June 27, 2000 (webpage).
- Ward, Daniel B. (ed.). 1979. Rare and Endangered Biota of Florida. Volume V, Plants. University Presses of Florida. 175 pp.
- Wunderlin, R. P. 1982. Guide to the Vascular Plants of Central Florida. University Presses of Florida. 472 pp.

APPENDIX A AGENCY COORDINATION LETTERS

FLORIDA FISH AND WILDLIFE CONSERVATION COMMISSION



JAMES L. "JAMIE" ADAMS, JR.
Bushnell

BARBARA C. BARSH
Jacksonville

QUINTON L. HEDGEPEETH, DDS
Miami

H.A. "HERKY" HUFFMAN
Deltona

DAVID K. MEEHAN
St. Petersburg

JULIE K. MORRIS
Sarasota

TONY MOSS
Miami

EDWIN P. ROBERTS, DC
Pensacola

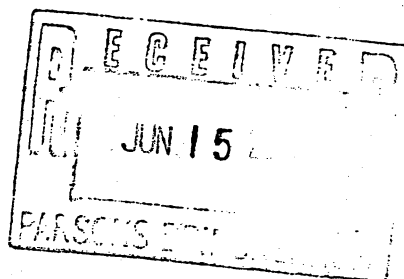
JOHN D. ROOD
Jacksonville

LAN L. EGBERT, Ph.D., Executive Director
TOR J. HELLER, Assistant Executive Director

WILDLIFE RESEARCH LABORATORY
4005 SOUTH MAIN STREET
GAINESVILLE FLORIDA 32601-9099
(352)955-2230 TDD (850) 488-9542

June 12, 2000

Mr. David Young
Parsons Brinckerhoff
1408 North Westshore Boulevard, Suite 300
Tampa, FL 33607



**Re: Bald Eagle Nest Inquiry for Gandy Boulevard from US 19 to 4th Street:
Township 30 South, Range 16 East, Sections 23, 24, 26, & 27; and Township 30
South, Range 17 East, Sections 18 & 19, Pinellas County, Florida**

Dear Mr. Young:

This is in reference to your request for bald eagle nest location information. There is one nest that is within one mile of your project site. It is Nest Number PI 021, located at latitude / longitude coordinates of 27° 50.70' / 82° 40.20'. This nest has been active from 1995 - 1999. I have enclosed a map detailing the location of the nest in relation to your project site.

This information represents only the general locations of bald eagle nests and nesting territories for which you have requested information. There may be additional nests in this area of which we are unaware. Such nests would be afforded the same protection. This information was obtained during routine aerial surveys, in most cases; consequently, the location information is only accurate to within ± 0.10 mile. The specific site of the nest must be determined from the ground, if a more precise location is required. Information provided by FFWCC does not confer access to the site, and active nests should not be approached during the nesting season (October 1 - May 15). Permission to trespass on private property should be obtained from the land owner.

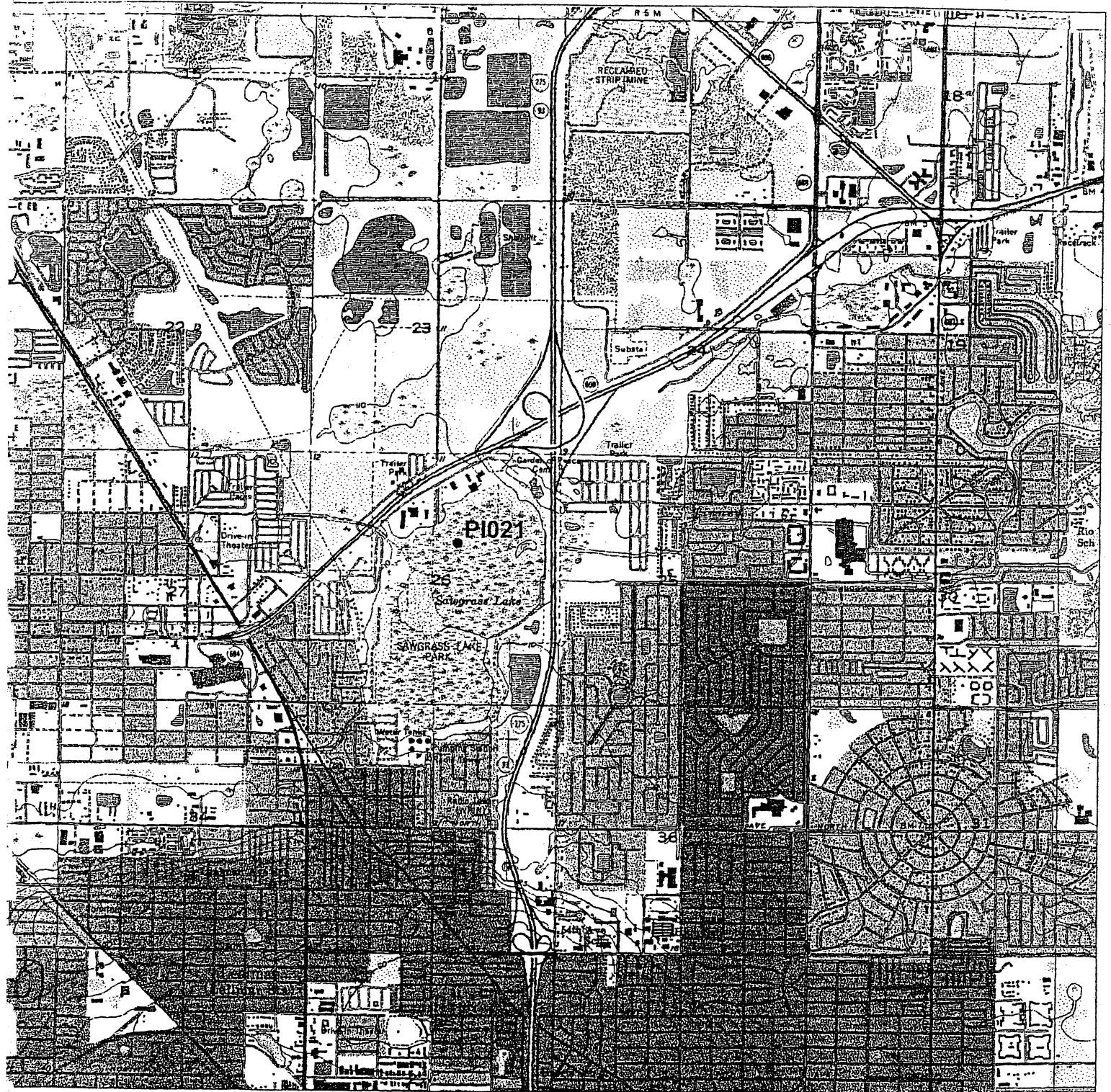
If I can be of further assistance, please feel free to contact me at the above address and/or phone number. Thank you for your inquiry.

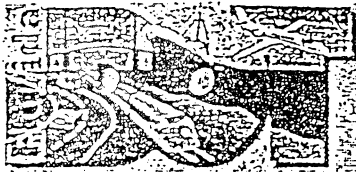
Sincerely,

A handwritten signature in cursive script that reads "Julia B. Dodge".

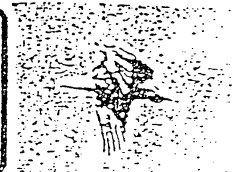
Julia B. Dodge
Enclosure (1)

cc: Tom Logan, FFWCC
ESC 6-1 Nest Number PI021





FLORIDA DEPARTMENT OF TRANSPORTATION
DISTRICT 7 - SURVEY - G.P.S. UNIT
EAGLES NEST LOCATION DATABASE

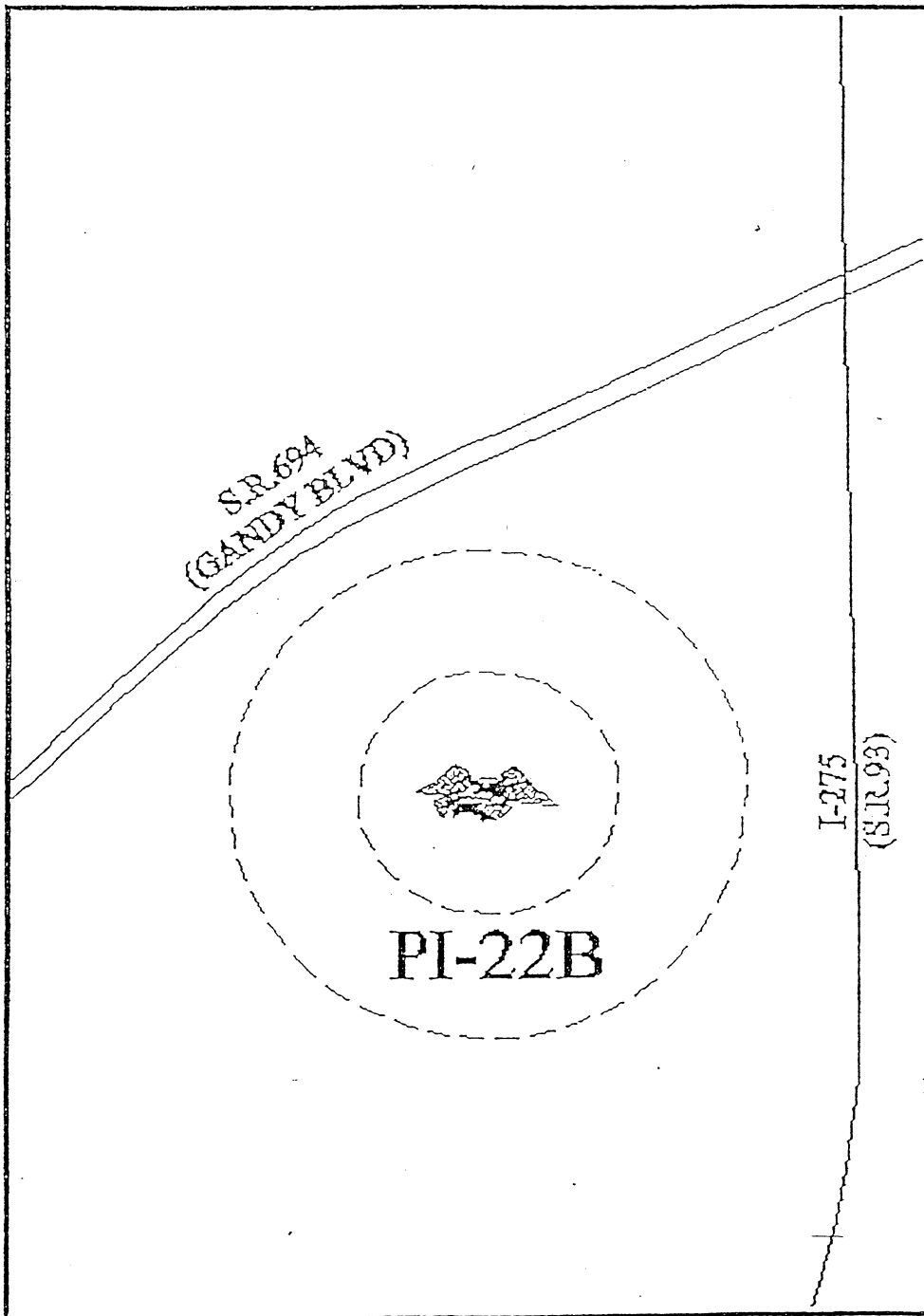


LATITUDE : 27° 50' 37.650"

X (EASTING) : 389079.6 METERS

LONGITUDE : 82° 40' 12.280"

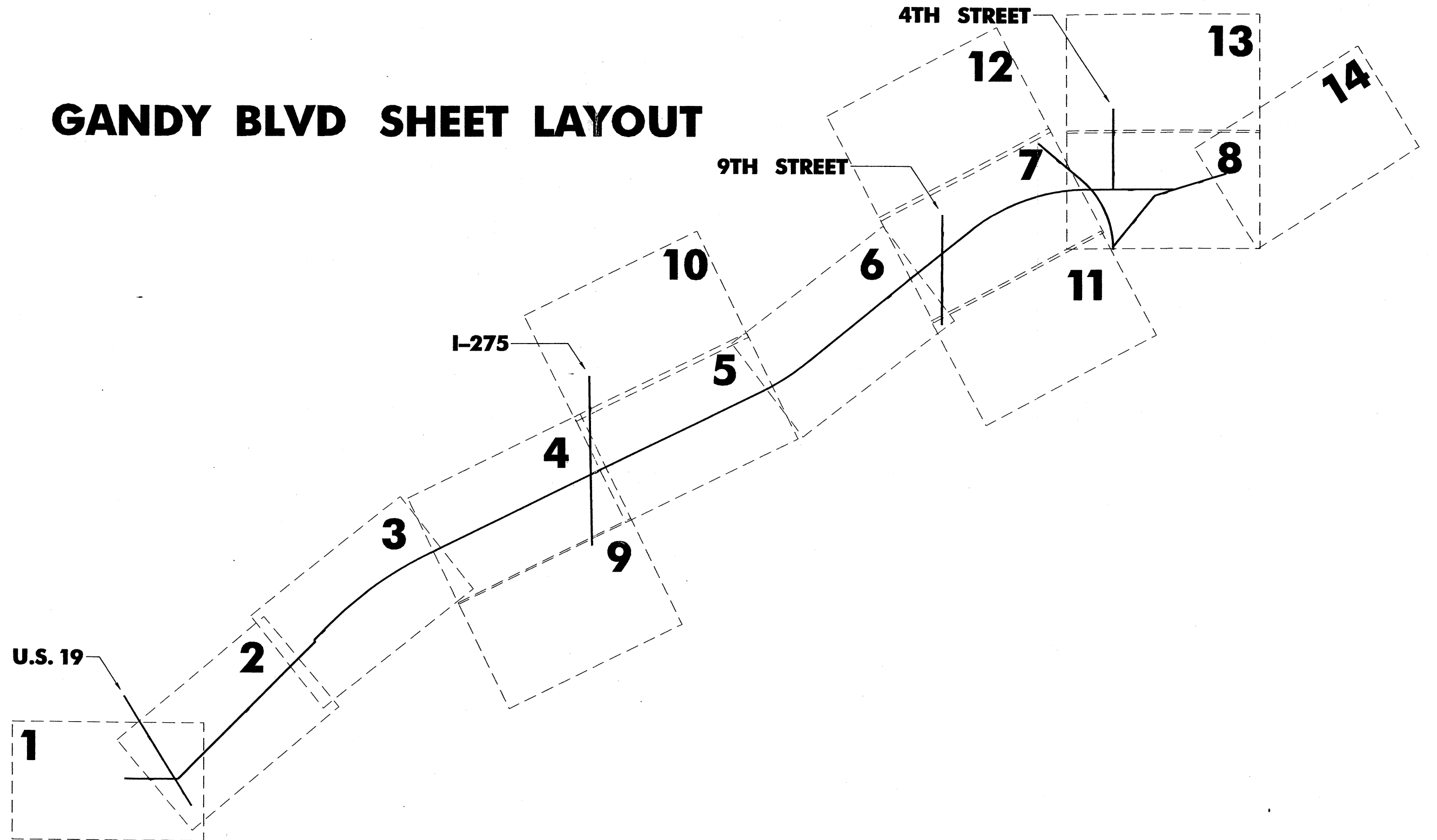
Y (NORTHING) : 133998.1 METERS



PI-22B NEST LOCATION AND MANAGEMENT ZONES

APPENDIX B CONCEPTUAL PLANS

GANDY BLVD SHEET LAYOUT



15-JUL-2002 11:00
Gandy Blvd.dwg

5

PLAN SHEET LAYOUT



ENGINEERING
PLANNING

STATE OF FLORIDA
DEPARTMENT OF TRANSPORTATION

ROAD NO.	COUNTY	FINANCIAL PROJECT ID
SR 694	PINELLAS	256931-1

**SR. 694 (GANDY BLVD) PDE STUDY
FROM U.S. 19 TO EAST OF 4TH STREET
PINELLAS COUNTY, FLORIDA**

SHEET
NO.

00



FLIGHT DATE : FEBRUARY 10, 2000

15-100-2000 13.54
G:\Sandy\15m\000.dgn

- | | | | | |
|--|--|--|---|---|
| <ul style="list-style-type: none"> --- EXISTING RIGHT OF WAY --- PROPOSED RIGHT OF WAY --- EDGE OF PAVEMENT | <ul style="list-style-type: none"> --- PROPERTY LINES --- CENTERLINE OF CONSTRUCTION --- SIDEWALK | <ul style="list-style-type: none"> --- WETLAND BOUNDARY AND OTHER SURFACE WATERS --- BRIDGE STRUCTURE OR RETAINING WALL --- EXISTING PAVEMENT | <ul style="list-style-type: none"> □ POND SITE ⊕ RESIDENTIAL RELOCATION ⚠ POTENTIAL CONTAMINATION SITE | <ul style="list-style-type: none"> ● AIR QUALITY RECEPTOR SITES ● RECEIVER LOCATION --- NOISE WALL |
|--|--|--|---|---|

PBS ENGINEERING PLANNING

STATE OF FLORIDA DEPARTMENT OF TRANSPORTATION		
ROAD NO.	COUNTY	FINANCIAL PROJECT ID
SR 694	PINELLAS	256931-1

**SR. 694 (GANDY BLVD) PDE STUDY
FROM U.S. 19 TO EAST OF 4TH STREET
PINELLAS COUNTY, FLORIDA**

SHEET NO.
1



FLIGHT DATE : FEBRUARY 10, 2000

15-MAY-2002 13:55
G:\gandy\pde\pde.dgn

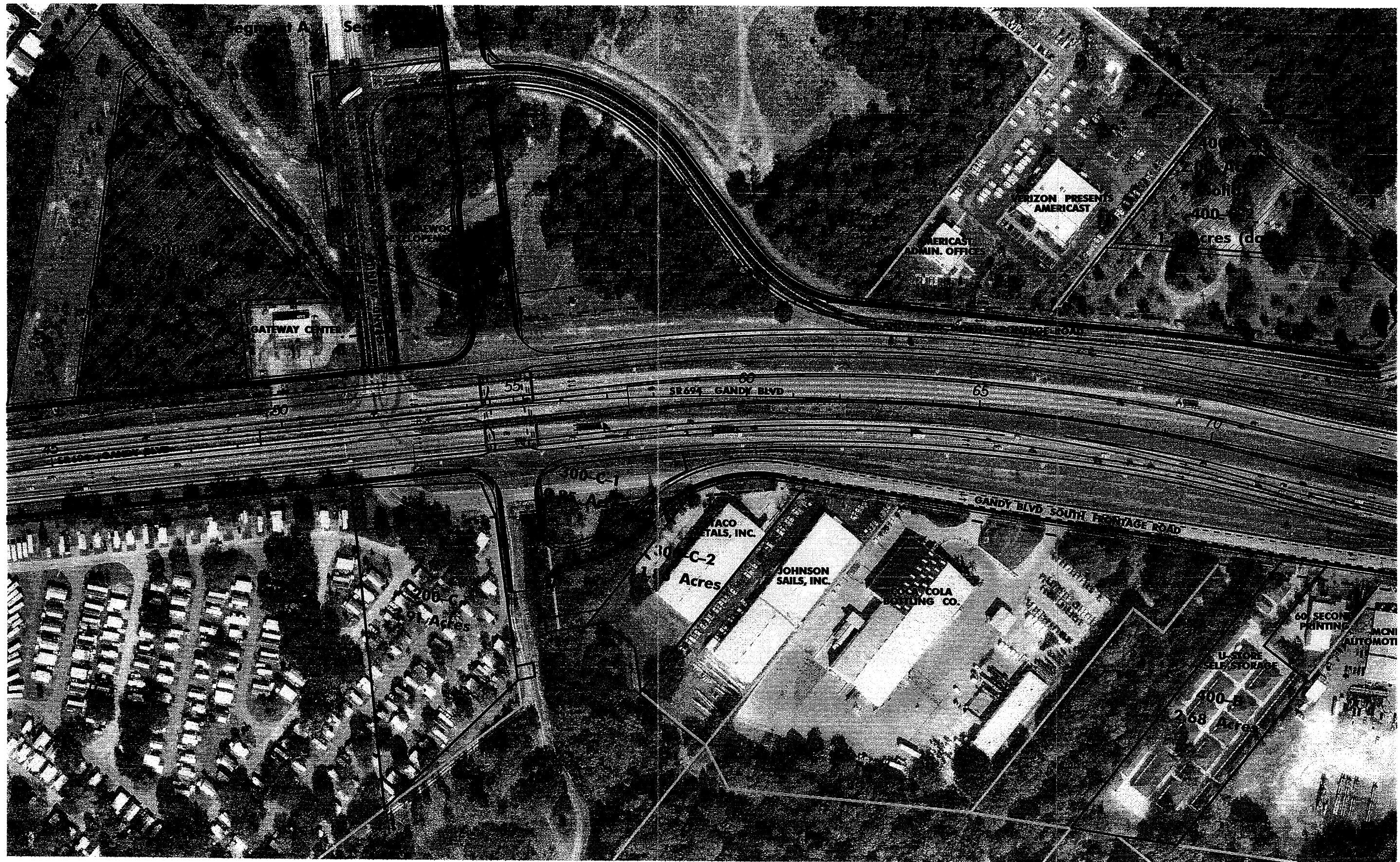
— EXISTING RIGHT OF WAY	— PROPERTY LINES	— WETLAND BOUNDARY AND OTHER SURFACE WATERS	● POND SITE	● AIR QUALITY RECEPTOR SITES
— PROPOSED RIGHT OF WAY	— CENTERLINE OF CONSTRUCTION	— BRIDGE STRUCTURE OR RETAINING WALL	● RESIDENTIAL RELOCATION	● RECEIVER LOCATION
— EDGE OF PAVEMENT	— SIDEWALK	— EXISTING PAVEMENT	▲ POTENTIAL CONTAMINATION SITE	— NOISE WALL

PBSJ ENGINEERING PLANNING

STATE OF FLORIDA DEPARTMENT OF TRANSPORTATION		
ROAD NO.	COUNTY	FINANCIAL PROJECT ID
SR 694	PINELLAS	256931-1

**SR. 694 (GANDY BLVD) PDE STUDY
FROM U.S. 19 TO EAST OF 4TH STREET
PINELLAS COUNTY, FLORIDA**

SHEET NO.
2



FLIGHT DATE : FEBRUARY 10, 2000

18-JUL-2000 14:40
G:\envy\env\2003.dgn

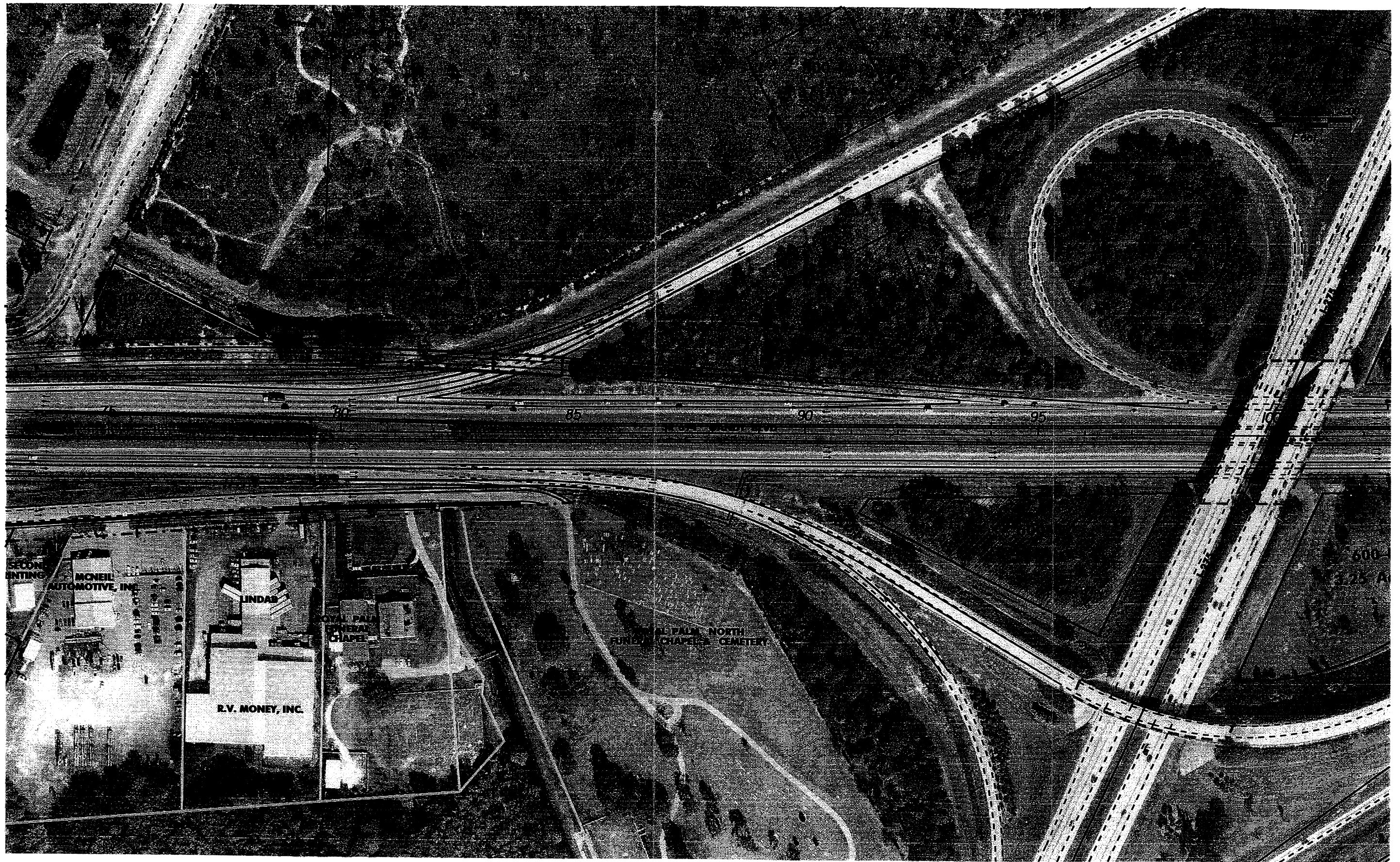
— EXISTING RIGHT OF WAY	— PROPERTY LINES	— WETLAND BOUNDARY AND OTHER SURFACE WATERS	● POND SITE
— PROPOSED RIGHT OF WAY	— CENTERLINE OF CONSTRUCTION	— BRIDGE STRUCTURE OR RETAINING WALL	● RESIDENTIAL/BUSINESS RELOCATION
— EDGE OF PAVEMENT	— SIDEWALK	— EXISTING PAVEMENT	▲ POTENTIAL CONTAMINATION SITE
			— NOISE WALL

PBS&J ENGINEERING PLANNING

STATE OF FLORIDA DEPARTMENT OF TRANSPORTATION		
ROAD NO.	COUNTY	FINANCIAL PROJECT ID
SR 694	PINELLAS	256931-1

**SR. 694 (GANDY BLVD) PDE STUDY
FROM U.S. 19 TO EAST OF 4TH STREET
PINELLAS COUNTY, FLORIDA**

SHEET NO.
3



FLIGHT DATE : FEBRUARY 10, 2000

15-MAY-2002 10:56
G:\p00000000\p00000000

— EXISTING RIGHT OF WAY	— PROPERTY LINES	— WETLAND BOUNDARY AND OTHER SURFACE WATERS	— POND SITE	— AIR QUALITY RECEPTOR SITES
— PROPOSED RIGHT OF WAY	— CENTERLINE OF CONSTRUCTION	— BRIDGE STRUCTURE OR RETAINING WALL	— RESIDENTIAL RELOCATION	— RECEIVER LOCATION
— EDGE OF PAVEMENT	— SIDEWALK	— EXISTING PAVEMENT	— POTENTIAL CONTAMINATION SITE	— NOISE WALL

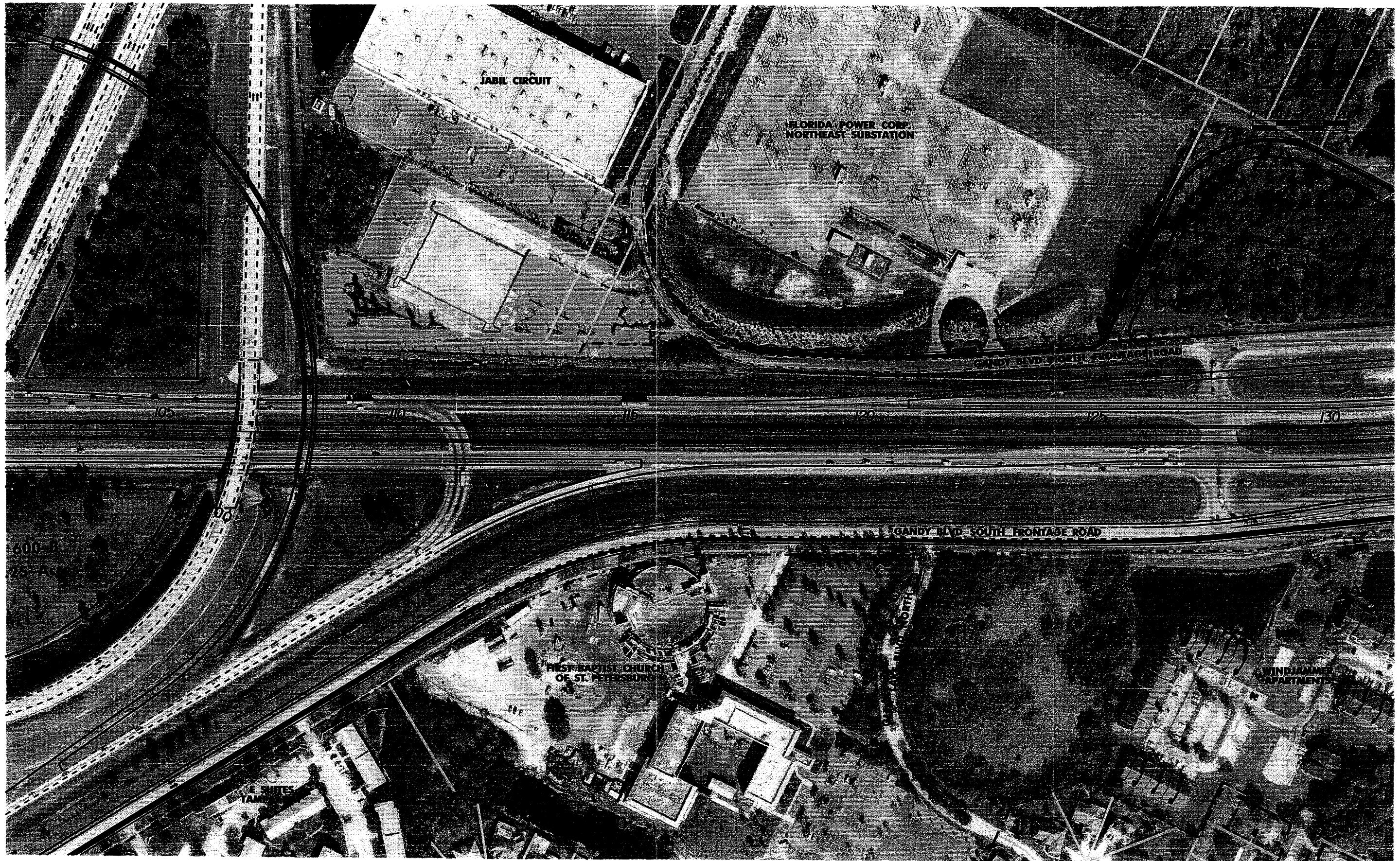
PBS ENGINEERING PLANNING

STATE OF FLORIDA DEPARTMENT OF TRANSPORTATION		
ROAD NO.	COUNTY	FINANCIAL PROJECT ID
SR 694	PINELLAS	256931-1

**SR. 694 (GANDY BLVD) PDE STUDY
FROM US 19 TO EAST OF 4TH STREET
PINELLAS COUNTY, FLORIDA**

SHEET NO.

4



FLIGHT DATE : FEBRUARY 10, 2000

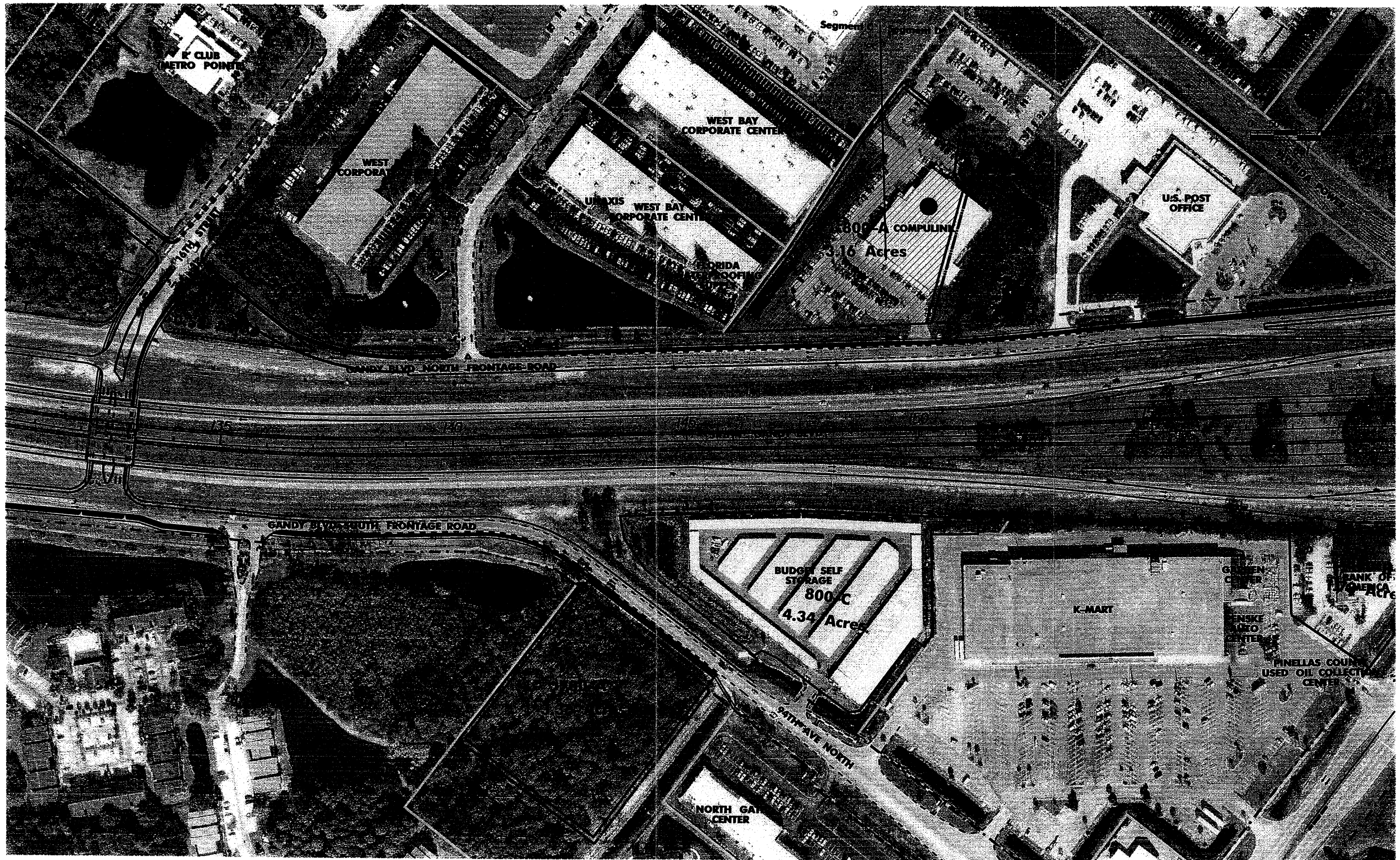
15-MAY-2002 13:56
G:\envy\envy005.dgn

— — EXISTING RIGHT OF WAY	— — PROPERTY LINES	— — WETLAND BOUNDARY AND OTHER SURFACE WATERS	● POND SITE	● AIR QUALITY RECEPTOR SITES
— — PROPOSED RIGHT OF WAY	— — CENTERLINE OF CONSTRUCTION	— — BRIDGE STRUCTURE OR RETAINING WALL	● RESIDENTIAL RELOCATION	● RECEIVER LOCATION
— — EDGE OF PAVEMENT	— — SIDEWALK	— — EXISTING PAVEMENT	▲ POTENTIAL CONTAMINATION SITE	● NOISE WALL

ENGINEERING PLANNING

STATE OF FLORIDA DEPARTMENT OF TRANSPORTATION		
ROAD NO.	COUNTY	FINANCIAL PROJECT ID
SR 694	PINELLAS	256931-1

SR. 694 (GANDY BLVD) PDE STUDY FROM U.S. 19 TO EAST OF 4TH STREET PINELLAS COUNTY, FLORIDA	SHEET NO. 5
---	---------------------------



FLIGHT DATE : FEBRUARY 10, 2000

15-MAR-2002 13:57
G:\Gandy\Yam\005.dgn

— EXISTING RIGHT OF WAY	— PROPERTY LINES	— WETLAND BOUNDARY AND OTHER SURFACE WATERS	● POND SITE	● AIR QUALITY RECEPTOR SITES
— PROPOSED RIGHT OF WAY	— CENTERLINE OF CONSTRUCTION	— BRIDGE STRUCTURE OR RETAINING WALL	● RESIDENTIAL RELOCATION	● RECEIVER LOCATION
— EDGE OF PAVEMENT	— SIDEWALK	— EXISTING PAVEMENT	▲ POTENTIAL CONTAMINATION SITE	● NOISE WALL

PBS ENGINEERING PLANNING

STATE OF FLORIDA DEPARTMENT OF TRANSPORTATION		
ROAD NO.	COUNTY	FINANCIAL PROJECT ID
SR 694	PINELLAS	256931-1

**SR. 694 (GANDY BLVD) PDE STUDY
FROM U.S. 19 TO EAST OF 4TH STREET
PINELLAS COUNTY, FLORIDA**

SHEET NO.
6



FLIGHT DATE : FEBRUARY 10, 2000

15-MAR-2002 13:59
G:\Gandy\plan\008.dgn

— EXISTING RIGHT OF WAY	— PROPERTY LINES	— WETLAND BOUNDARY AND OTHER SURFACE WATERS	⊗ POND SITE	⊗ AIR QUALITY RECEPTOR SITES
— PROPOSED RIGHT OF WAY	— CENTERLINE OF CONSTRUCTION	— BRIDGE STRUCTURE OR RETAINING WALL	⊗ RESIDENTIAL RELOCATION	⊗ RECEIVER LOCATION
— EDGE OF PAVEMENT	— SIDEWALK	— EXISTING PAVEMENT	⊗ POTENTIAL CONTAMINATION SITE	⊗ NOISE WALL

PBSJ ENGINEERING PLANNING

STATE OF FLORIDA DEPARTMENT OF TRANSPORTATION		
ROAD NO.	COUNTY	FINANCIAL PROJECT ID
SR 694	PINELLAS	256931-1

**SR. 694 (GANDY BLVD) PDE STUDY
FROM U.S. 19 TO EAST OF 4TH STREET
PINELLAS COUNTY, FLORIDA**

SHEET NO.
8



FLIGHT DATE : FEBRUARY 10, 2000

15-144-8002 0.56
G:\envy\envy081p

— . EXISTING RIGHT OF WAY	— . PROPERTY LINES	— . WETLAND BOUNDARY AND OTHER SURFACE WATERS	⊡ POND SITE	⊡ AIR QUALITY RECEPTOR SITES
— . PROPOSED RIGHT OF WAY	— . CENTERLINE OF CONSTRUCTION	— . BRIDGE STRUCTURE OR RETAINING WALL	⊡ RESIDENTIAL RELOCATION	⊡ RECEIVER LOCATION
— . EDGE OF PAVEMENT	— . SIDEWALK	— . EXISTING PAVEMENT	⊡ POTENTIAL CONTAMINATION SITE	— . NOISE WALL

PBSJ ENGINEERING
PLANNING

STATE OF FLORIDA DEPARTMENT OF TRANSPORTATION		
ROAD NO.	COUNTY	FINANCIAL PROJECT ID
SR 694	PINELLAS	256931-1

**SR. 694 (GANDY BLVD) PDE STUDY
FROM U.S. 19 TO EAST OF 4TH STREET
PINELLAS COUNTY, FLORIDA**

SHEET NO.
9



FLIGHT DATE : FEBRUARY 10, 2000

15-JUN-2002 17:49
D:\envy\envy\m00.dgn

— . EXISTING RIGHT OF WAY	— . PROPERTY LINES	— . WETLAND BOUNDARY AND OTHER SURFACE WATERS	⊠ POND SITE	● AIR QUALITY RECEPTOR SITES
— . PROPOSED RIGHT OF WAY	— . CENTERLINE OF CONSTRUCTION	— . BRIDGE STRUCTURE OR RETAINING WALL	⊠ RESIDENTIAL RELOCATION	● RECEIVER LOCATION
— . EDGE OF PAVEMENT	— . SIDEWALK	— . EXISTING PAVEMENT	⊠ POTENTIAL CONTAMINATION SITE	— . NOISE WALL



STATE OF FLORIDA DEPARTMENT OF TRANSPORTATION		
ROAD NO.	COUNTY	FINANCIAL PROJECT ID
SR 694	PINELLAS	256931-1

**SR. 694 (GANDY BLVD) PDE STUDY
FROM U.S. 19 TO EAST OF 4TH STREET
PINELLAS COUNTY, FLORIDA**

SHEET NO.
10



FLIGHT DATE : FEBRUARY 10, 2000

15-JAN-2002 13:59
G:\Gandy\pinellas\11.dgn

— EXISTING RIGHT OF WAY	— PROPERTY LINES	— WETLAND BOUNDARY AND OTHER SURFACE WATERS	— POND SITE	— AIR QUALITY RECEPTOR SITES
— PROPOSED RIGHT OF WAY	— CENTERLINE OF CONSTRUCTION	— BRIDGE STRUCTURE OR RETAINING WALL	— RESIDENTIAL RELOCATION	— RECEIVER LOCATION
— EDGE OF PAVEMENT	— SIDEWALK	— EXISTING PAVEMENT	— POTENTIAL CONTAMINATION SITE	— NOISE WALL



STATE OF FLORIDA DEPARTMENT OF TRANSPORTATION		
ROAD NO.	COUNTY	FINANCIAL PROJECT ID
SR 694	PINELLAS	256931-1

**SR. 694 (GANDY BLVD) PDE STUDY
FROM U.S. 19 TO EAST OF 4TH STREET
PINELLAS COUNTY, FLORIDA**

SHEET NO.
11



FLIGHT DATE : FEBRUARY 10, 2000

15-MAY-2002 13:59
G:\Gandy\Gandy12.dgn

— . EXISTING RIGHT OF WAY	— . PROPERTY LINES	— . WETLAND BOUNDARY AND OTHER SURFACE WATERS	⊡ POND SITE	⊡ AIR QUALITY RECEPTOR SITES
— . PROPOSED RIGHT OF WAY	— . CENTERLINE OF CONSTRUCTION	— . BRIDGE STRUCTURE OR RETAINING WALL	⊡ RESIDENTIAL RELOCATION	⊡ RECEPTOR LOCATION
— . EDGE OF PAVEMENT	— . SIDEWALK	— . EXISTING PAVEMENT	⊡ POTENTIAL CONTAMINATION SITE	— . NOISE WALL

PBSJ

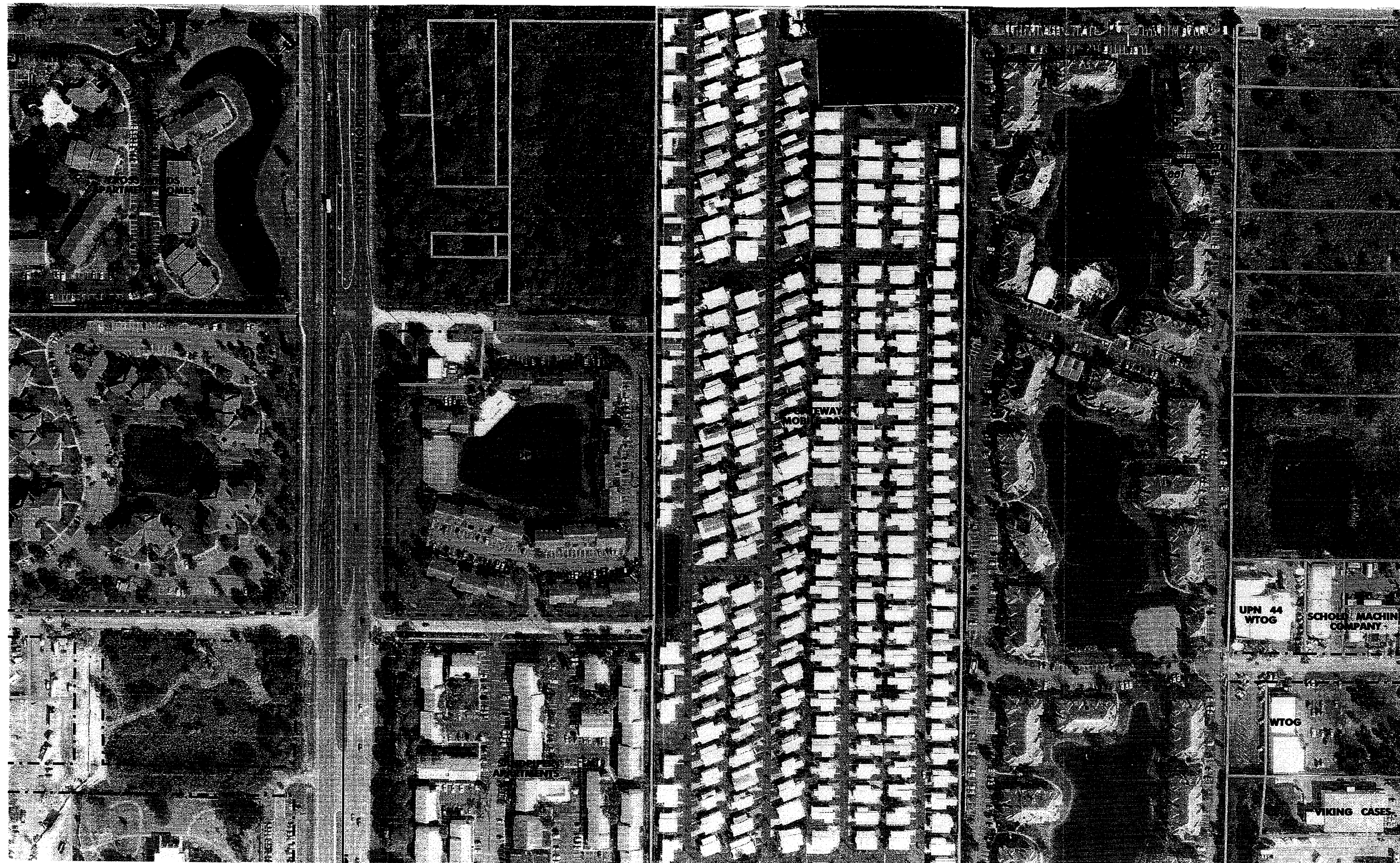
ENGINEERING
PLANNING

STATE OF FLORIDA DEPARTMENT OF TRANSPORTATION		
ROAD NO.	COUNTY	FINANCIAL PROJECT ID
SR 694	PINELLAS	256931-1

**SR. 694 (GANDY BLVD) PDE STUDY
FROM U.S. 19 TO EAST OF 4TH STREET
PINELLAS COUNTY, FLORIDA**

SHEET
NO.

12



FLIGHT DATE : FEBRUARY 10, 2000

- EXISTING RIGHT OF WAY PROPERTY LINES — WETLAND BOUNDARY AND OTHER SURFACE WATERS POND SITE R1 AIR QUALITY RECEPTOR SITES
 — PROPOSED RIGHT OF WAY — CENTERLINE OF CONSTRUCTION — BRIDGE STRUCTURE OR RETAINING WALL (R) RESIDENTIAL RELOCATION R2N RECEIVER LOCATION
 — EDGE OF PAVEMENT — SIDEWALK — EXISTING PAVEMENT (A) POTENTIAL CONTAMINATION SITE — NOISE WALL



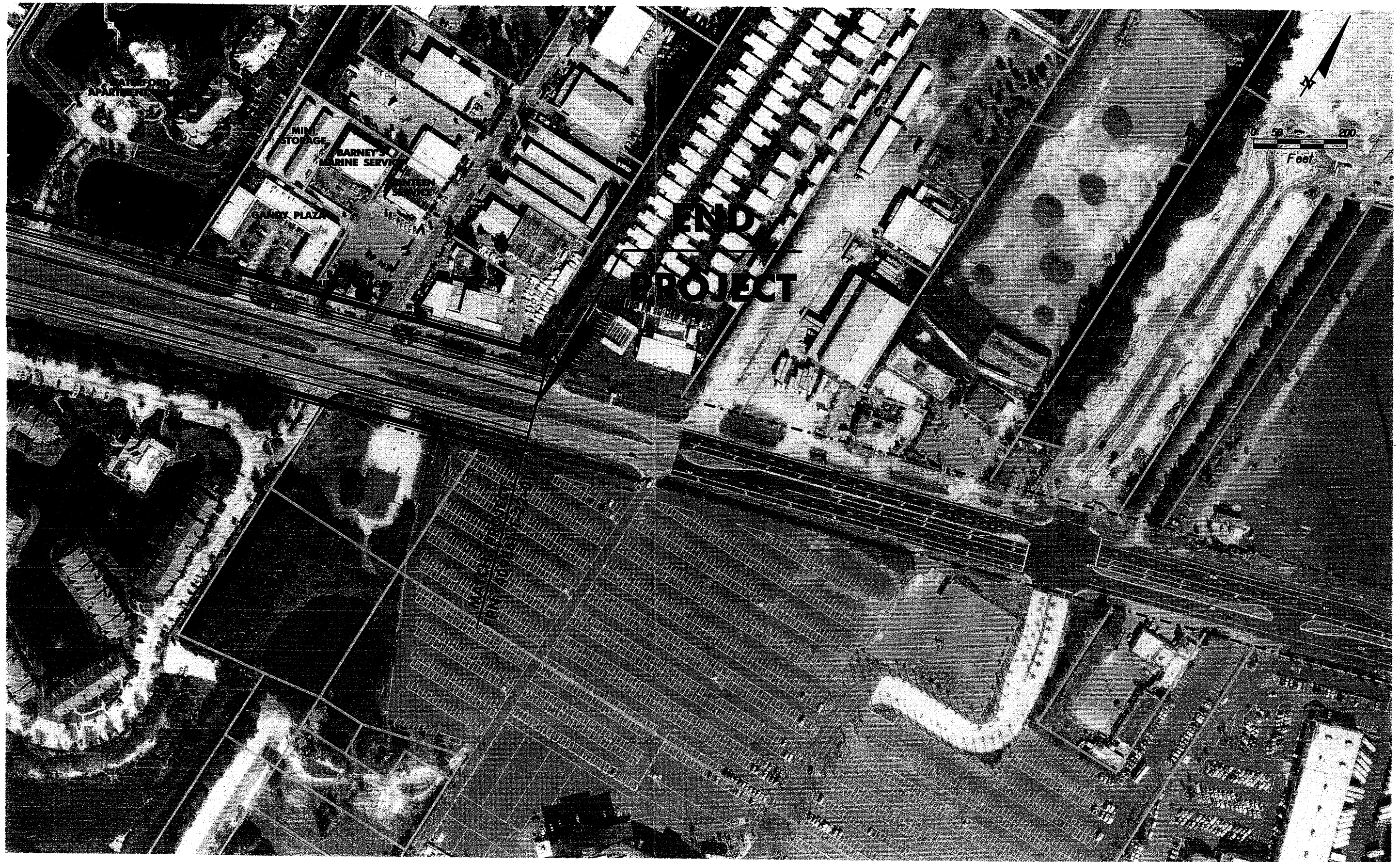
ENGINEERING PLANNING

STATE OF FLORIDA DEPARTMENT OF TRANSPORTATION		
ROAD NO.	COUNTY	FINANCIAL PROJECT I
SR 694	PINELLAS	256931-1

**SR. 694 (GANDY BLVD) PDE STUDY
FROM U.S. 19 TO EAST OF 4TH STREET
PINELLAS COUNTY, FLORIDA**

**SHEET
NO.**

13



FLIGHT DATE : FEBRUARY 10, 2000

15-447-002 1400
01/20/00 10:00 AM

— EXISTING RIGHT OF WAY	— PROPERTY LINES	— WETLAND BOUNDARY AND OTHER SURFACE WATERS	● POND SITE	● AIR QUALITY RECEPTOR SITES
— PROPOSED RIGHT OF WAY	— CENTERLINE OF CONSTRUCTION	— BRIDGE STRUCTURE OR RETAINING WALL	● RESIDENTIAL RELOCATION	● RECEIVER LOCATION
— EDGE OF PAVEMENT	— SIDEWALK	— EXISTING PAVEMENT	▲ POTENTIAL CONTAMINATION SITE	— NOISE WALL

PBS ENGINEERING PLANNING

STATE OF FLORIDA DEPARTMENT OF TRANSPORTATION		
ROAD NO.	COUNTY	FINANCIAL PROJECT ID
SR 694	PINELLAS	256931-1

**SR 694 (GANDY BLVD) PDE STUDY
FROM U.S. 19 TO EAST OF 4TH STREET
PINELLAS COUNTY, FLORIDA**

SHEET NO.
14