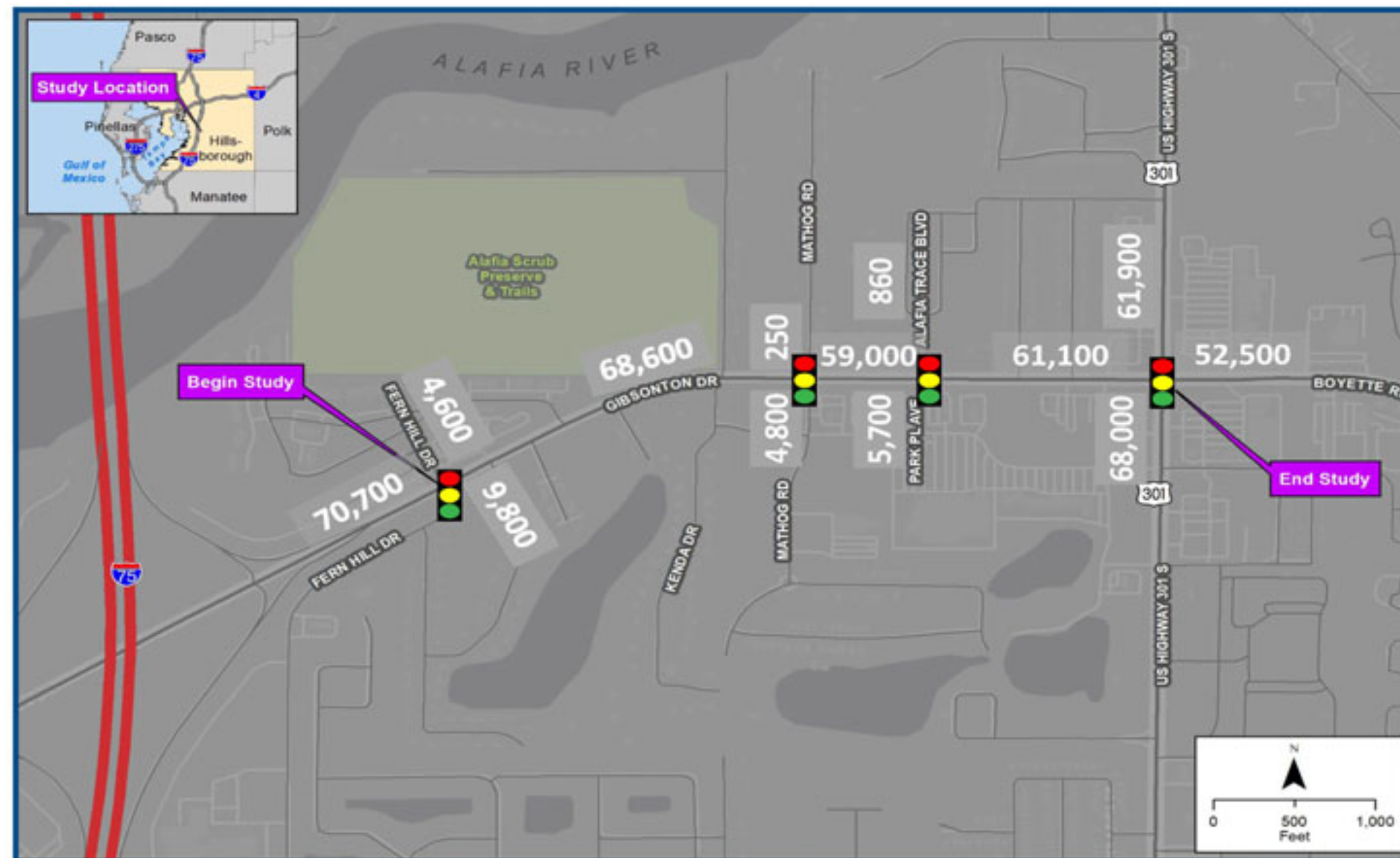


TRAFFIC VOLUMES AND CRASH HISTORY

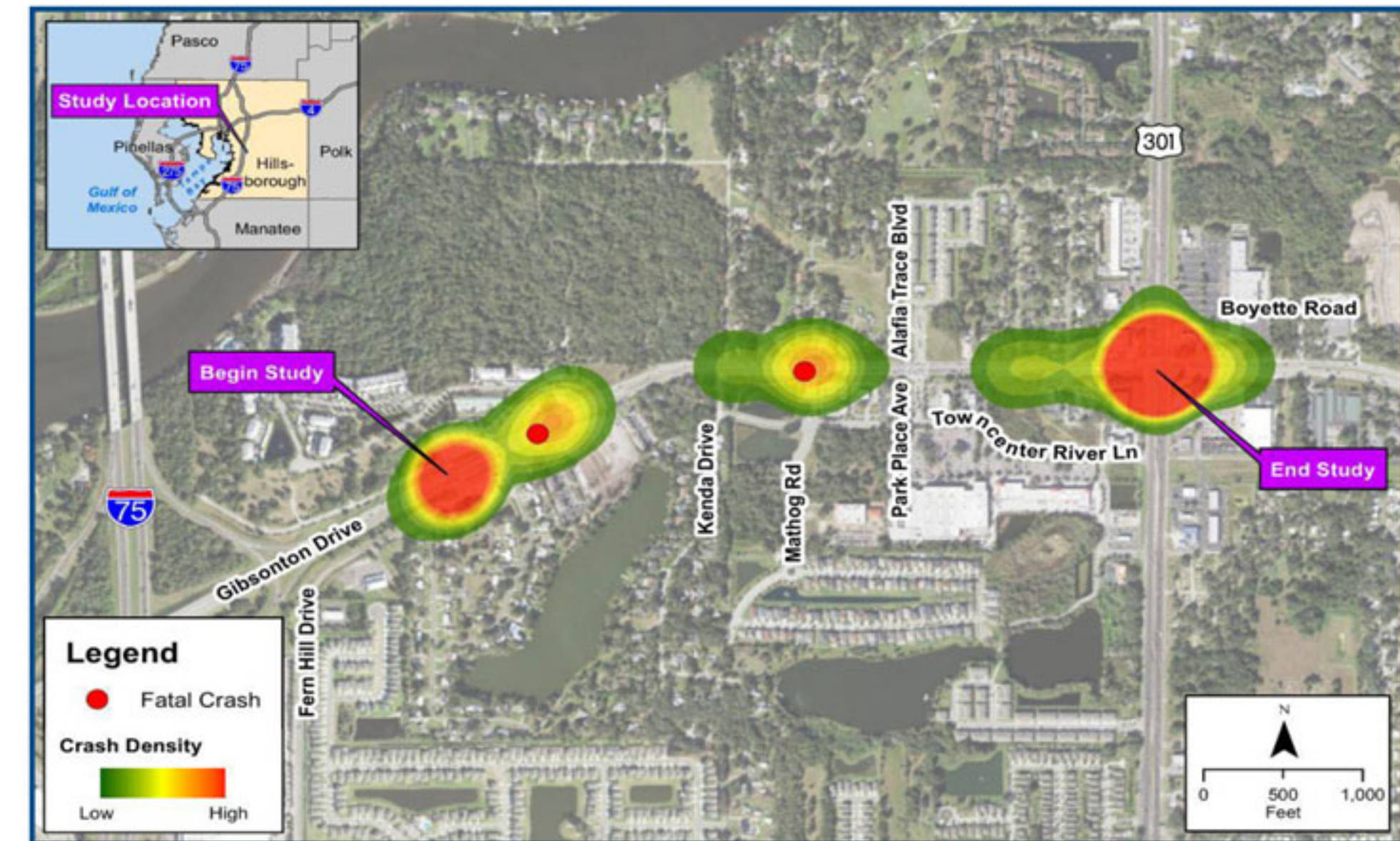


Year 2022 traffic volumes:

Range from 38,400 to 56,600 vehicles per day with a LOS F in the eastbound direction and LOS E in the westbound direction.

Year 2045 traffic volumes:

Projected to range from 52,500 to 70,700 vehicles per day. Gibsonton Drive is forecasted to have a LOS F in both the eastbound and westbound direction for the No-Build Alternative in Design Year (2045) in the AM and PM Periods.



910 crashes reported (2018 through 2022):

- Average 182 crashes per year
- 280 crashes with injuries
- Crash rate exceeds statewide average for similar roadway facilities
- 2 fatal crashes