



I-275 (SR 93) Design Change Re-evaluation

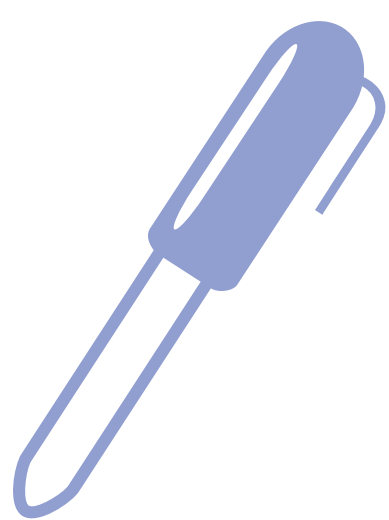
Project Development and Environment Study from south of 54th Avenue South to north of 4th Street North, Pinellas County, Florida
WPI Segment # 424501-1, ETDM # 12556

PROJECT COMMENTS

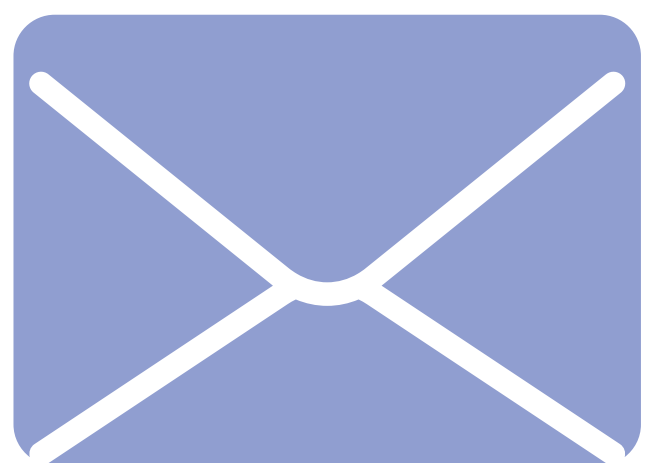
How to make comments about the I-275 (SR 93) Design Change Re-evaluation:



Make a verbal comment here tonight to the court reporter or during the formal portion of the hearing



Complete a comment form and place in comment box or give to staff here tonight



Mail comments to:
Environmental Management Engineer
Florida Department of Transportation, District Seven
11201 N. McKinley Drive, MS 7-500
Tampa, FL 33612-6456



Email comments to:
ashley.henzel@dot.state.fl.us



Submit comments online:
<http://active.fdotd7studies.com/i275/54th-to-4th/>

