



INTERSTATE 75



NORTHERN STUDY - FROM SOUTH OF US 301 TO NORTH OF FLETCHER AVENUE IN HILLSBOROUGH COUNTY (WPI Segment No. 419235-3)
SOUTHERN STUDY - FROM MOCCASIN WALLOW ROAD IN MANATEE COUNTY TO SOUTH OF US 301 IN HILLSBOROUGH COUNTY (WPI Segment No. 419235-2)



Interstate 75 PD&E Studies Presentation To Hillsborough MPO

August 4, 2009

PROJECT DEVELOPMENT & ENVIRONMENT STUDIES

I-75 Hillsborough MPO Presentation
August 2009

Project Location Map

Fletcher Avenue

US 301

Moccasin Wallow Road

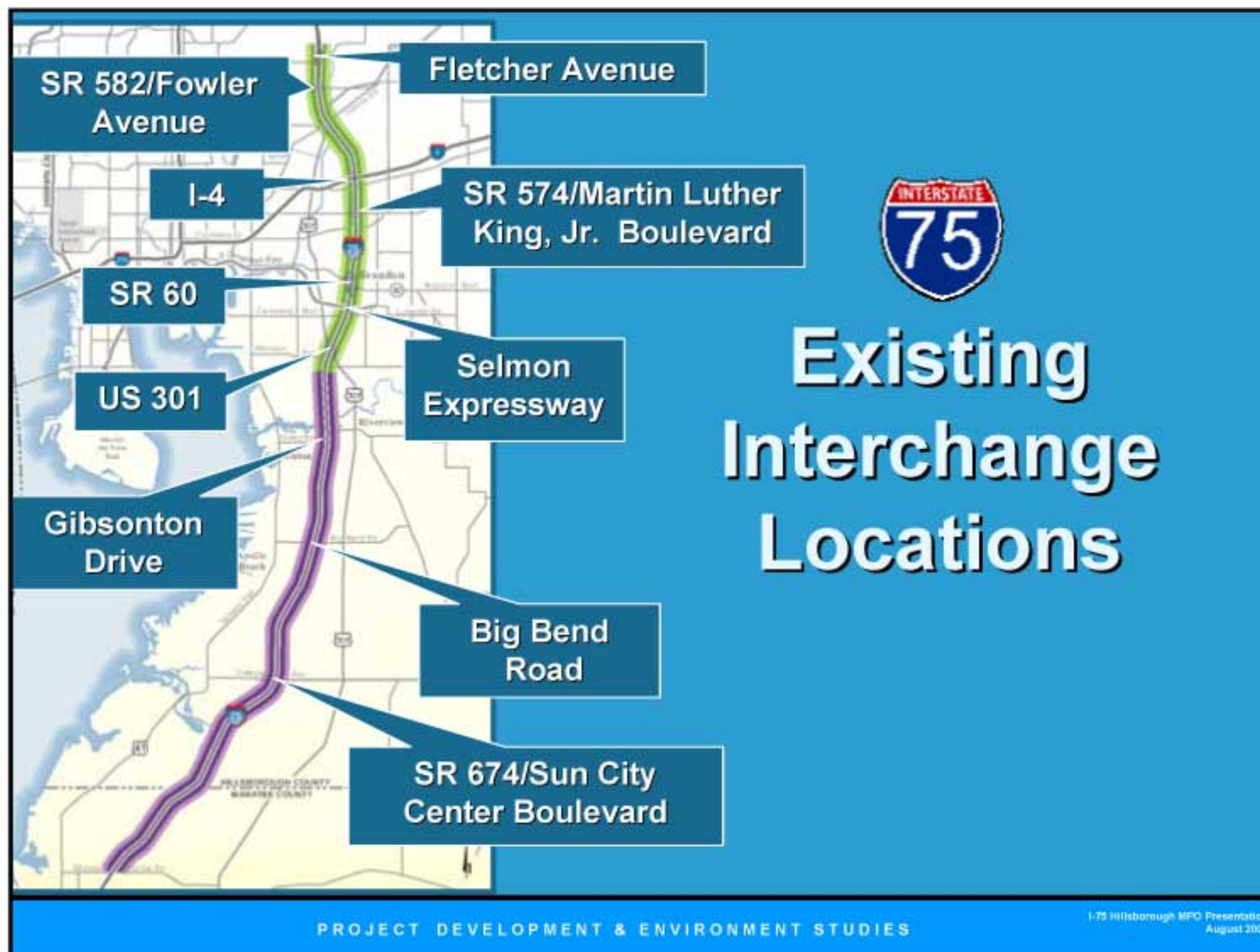
U.S. Department of Transportation
Federal Highway Administration

SARASOTA - MANATEE
METROPOLITAN PLANNING ORGANIZATION

mopo METROPOLITAN PLANNING ORGANIZATION FOR TRANSPORTATION

PROJECT DEVELOPMENT & ENVIRONMENT STUDIES

I-75 Hillsborough MPO Presentation
August 2009



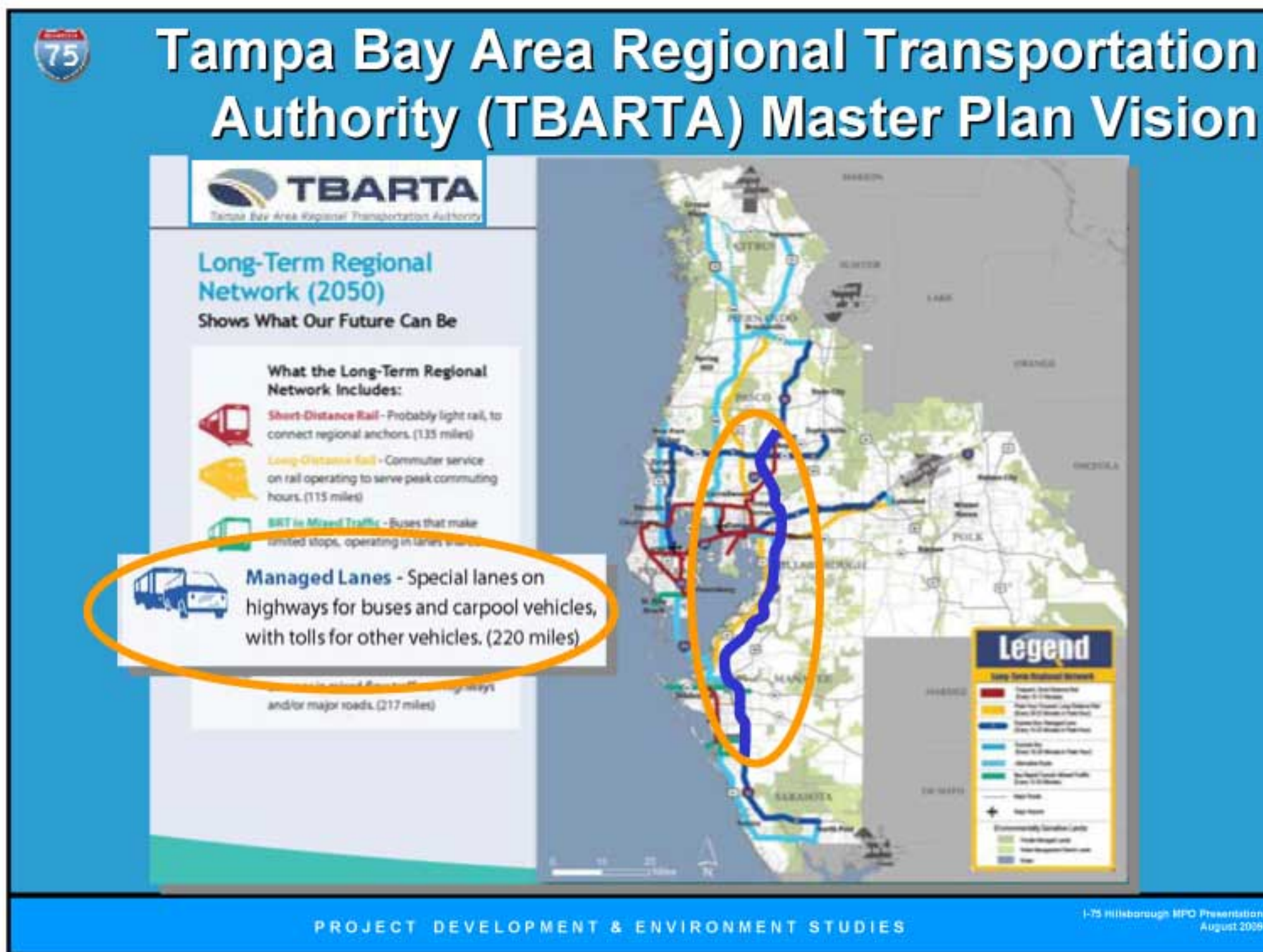
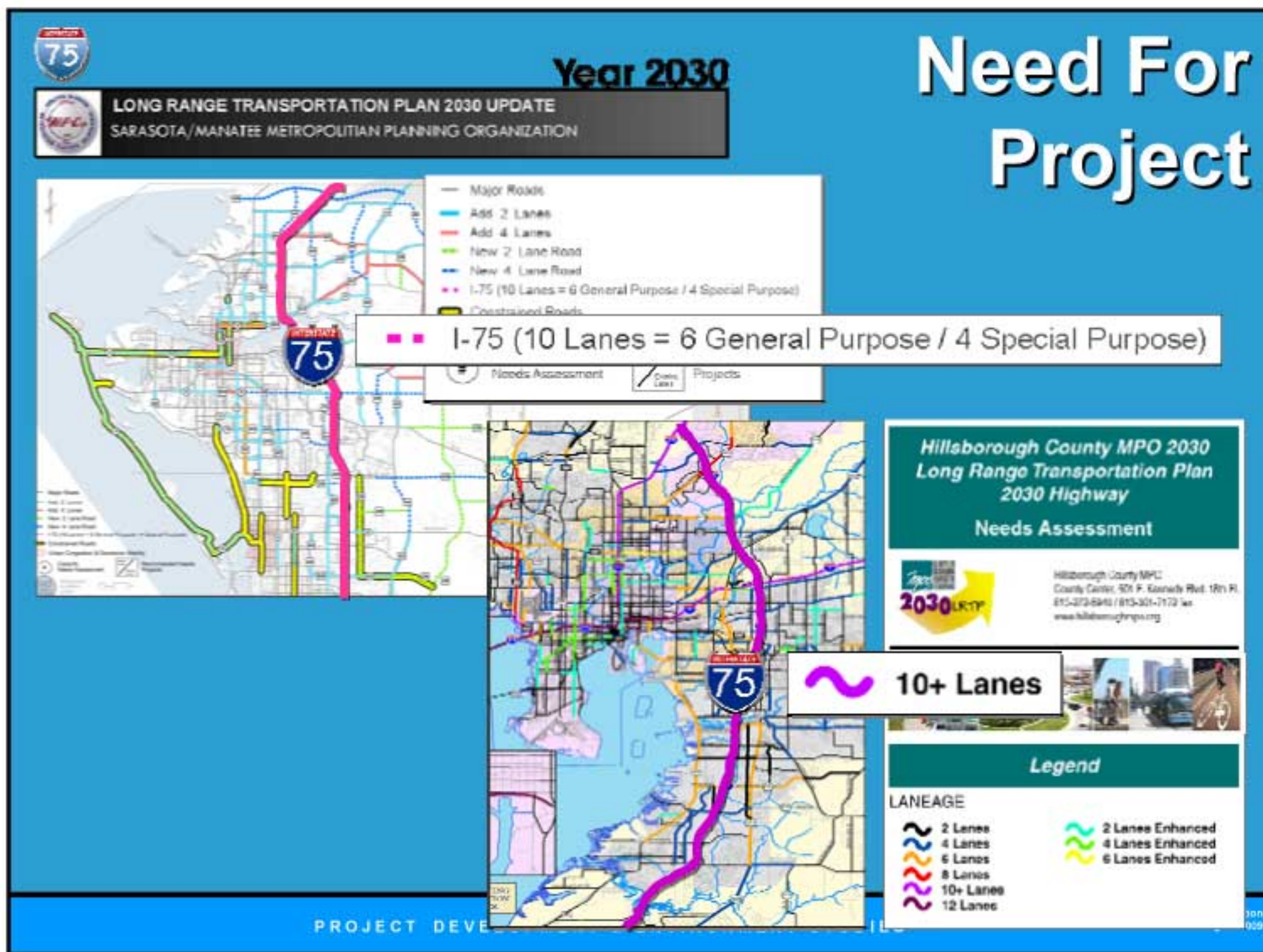

Need For Improvements

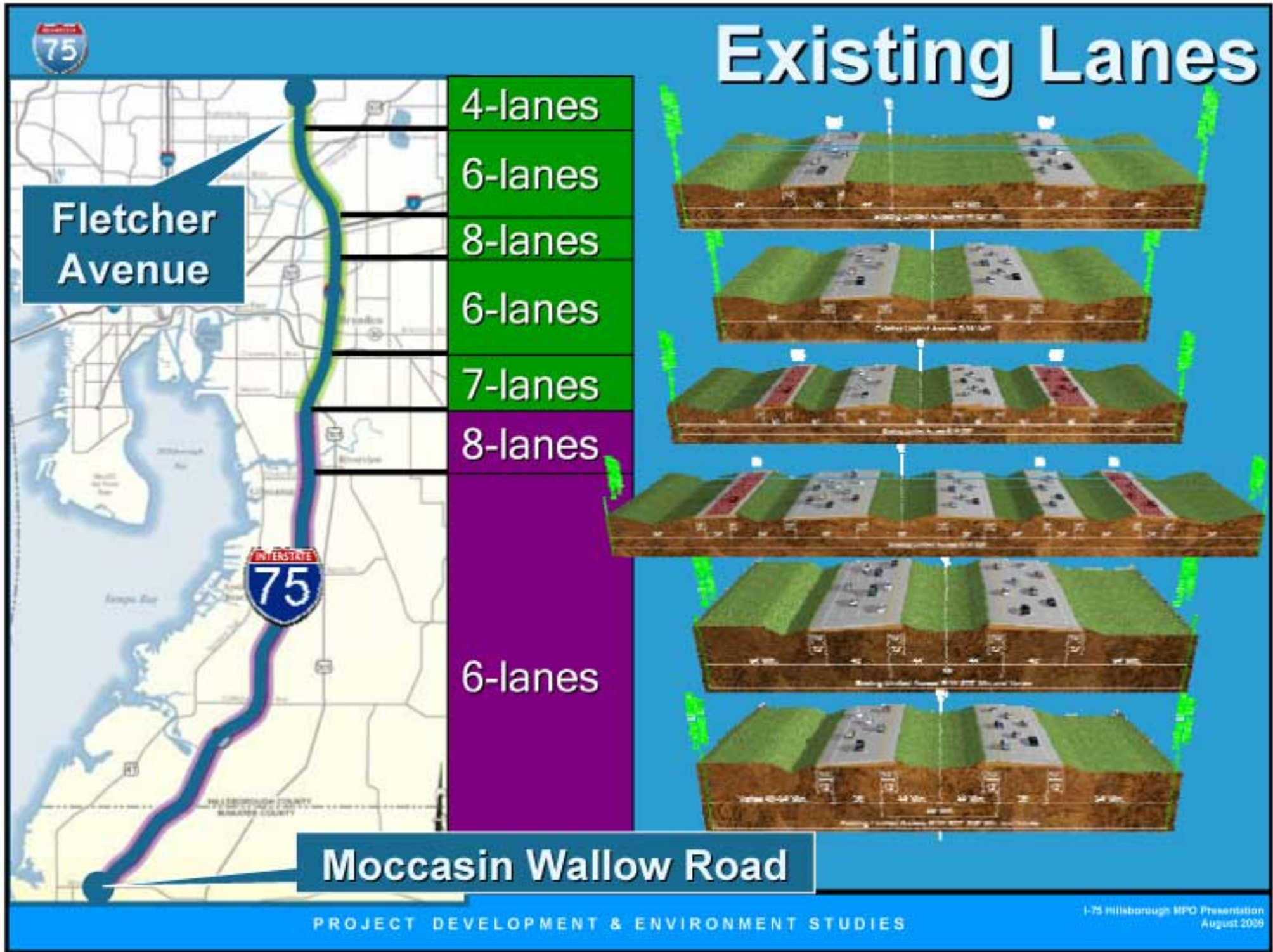
- ✦ I-75's Part in the Strategic Intermodal System for Economic & Mobility Enhancement
- ✦ The Critical Role of I-75 in the Emergency Evacuation Network
- ✦ Existing and Projected Population & Employment Growth
- ✦ Expected Travel Demands Within the Study Area
- ✦ Sarasota/Manatee & Hillsborough County MPO 2030 Needs Assessments

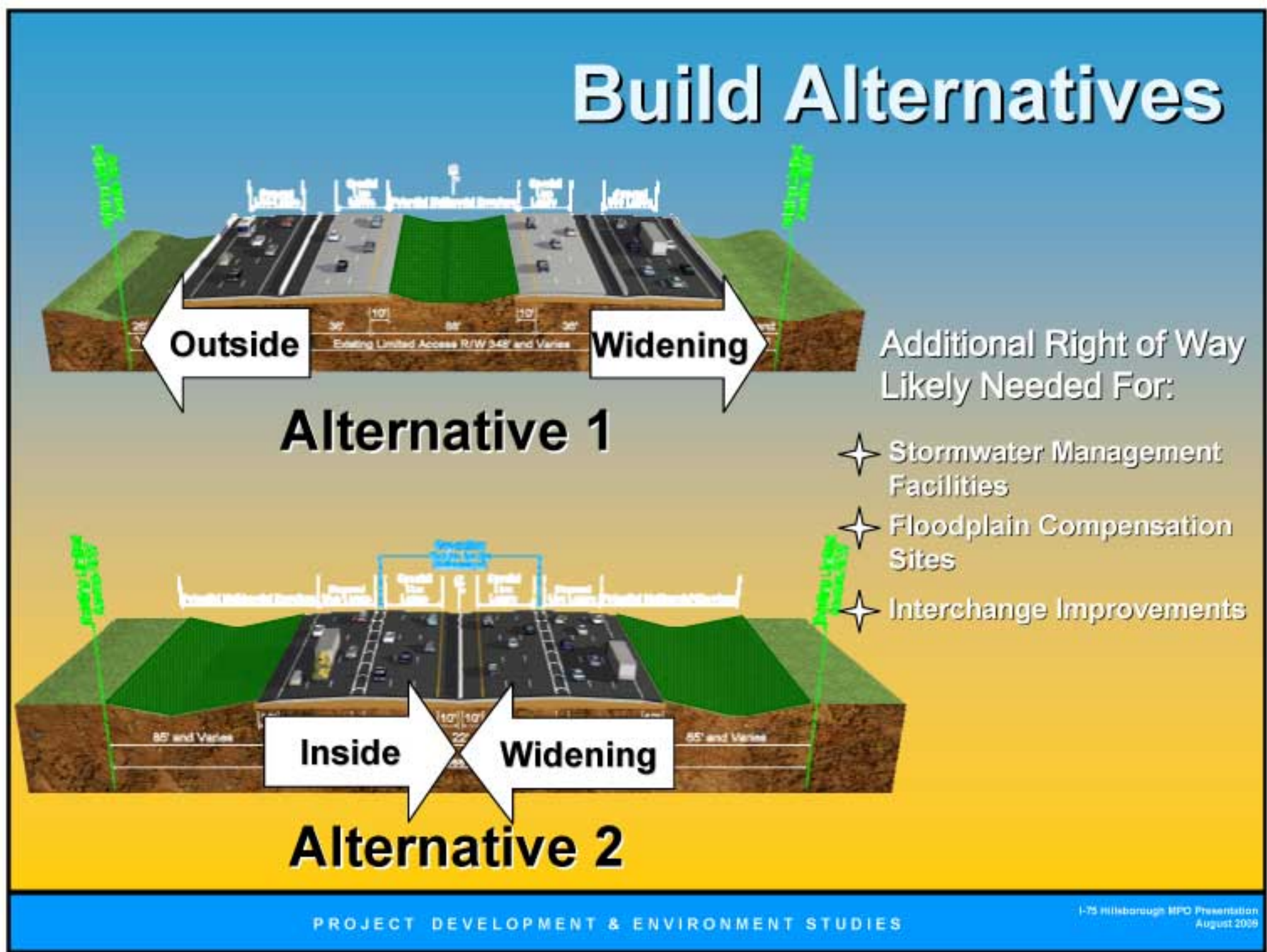
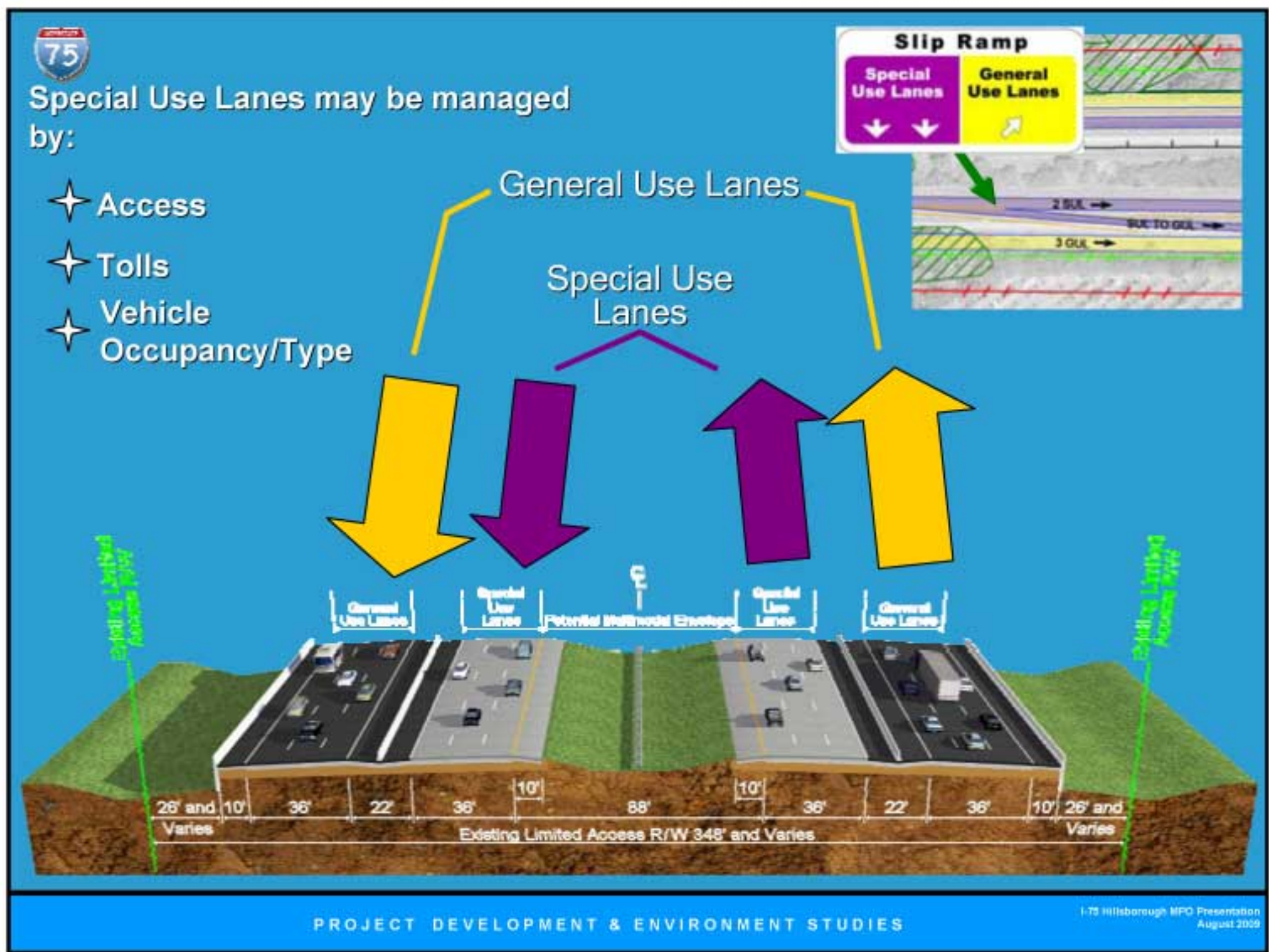


PROJECT DEVELOPMENT & ENVIRONMENT STUDIES

I-75 Hillsborough MPO Presentation August 2009

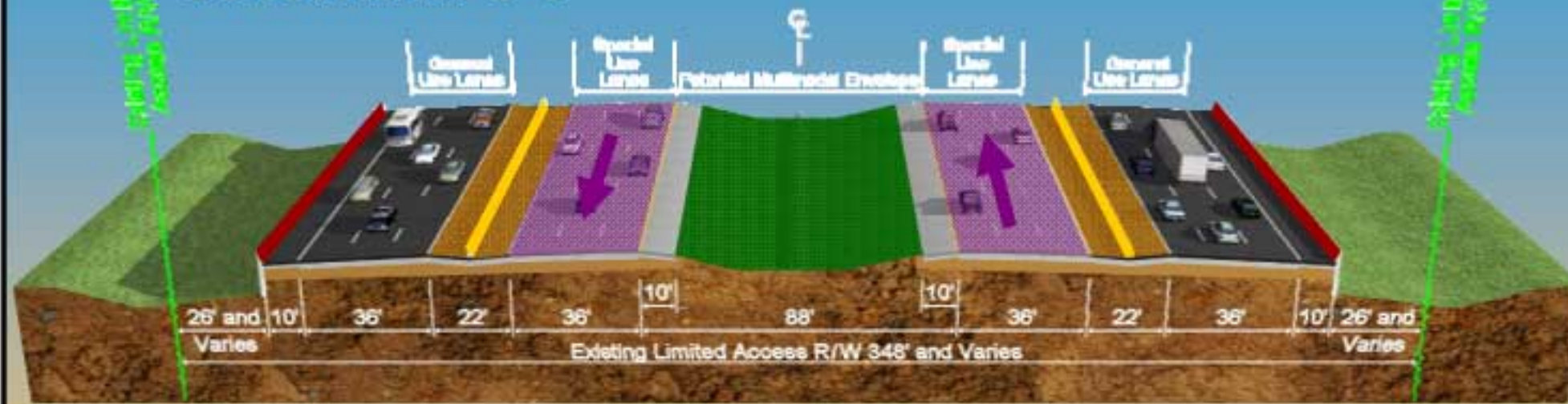






Build Alternatives Northern Study

Alternative 1



Alternative 2



PROJECT DEVELOPMENT & ENVIRONMENT STUDIES

I-75 Hillsborough MPO Presentation August 2009

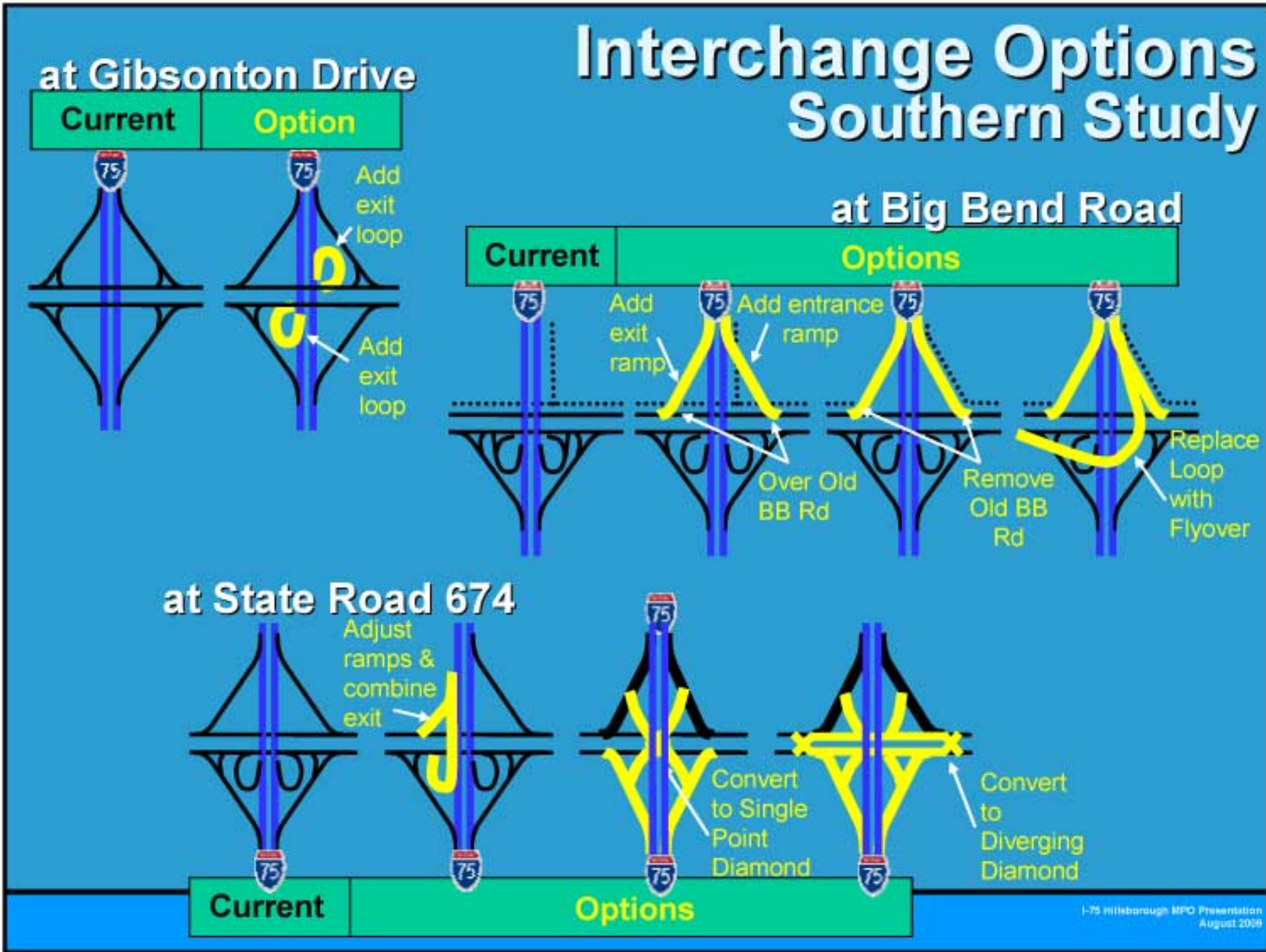
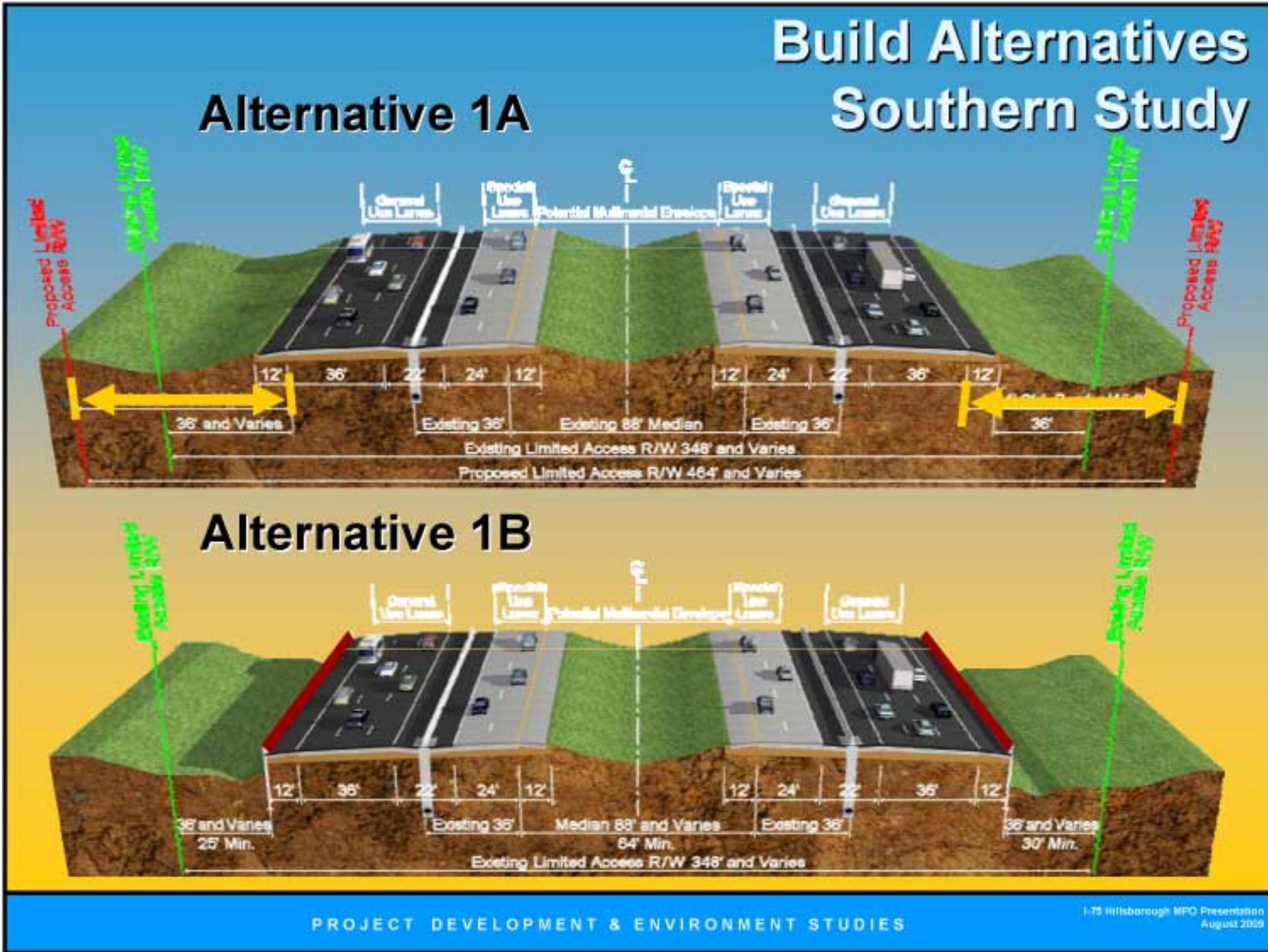
Build Alternatives Southern Study

Alternative 2



PROJECT DEVELOPMENT & ENVIRONMENT STUDIES

I-75 Hillsborough MPO Presentation August 2009





Interchange Options Northern Study



US 301
Selmon Expressway
SR 60



SR 574/ MLK, Jr. Blvd.
I-4



Fowler Avenue
Fletcher Avenue



Project Financing

FDOT 5-Year Work Program
Fiscal Year 2008 / 2009 through Fiscal Year 2013 / 2014

Phase	Fiscal Year
Design Engineering	Not Currently Funded
Right-of-Way	Not Currently Funded
Construction	Not Currently Funded

Timing for fund availability may change



Advanced or Interim Improvements



- ✦ Lower Cost Interchange or Ramp Modifications
- ✦ Adding Auxiliary or Through Lanes

Lower Cost Interim Improvements Could Be Programmed for:

- ✦ Design
- ✦ Land Acquisition
- ✦ Construction



Study Timeline





Opportunities For Input

For Project Information visit

www.mytbi.com

Click on “Future Projects” then
“I-75 PD&E Studies”



We encourage your participation
in this project!



Questions?