

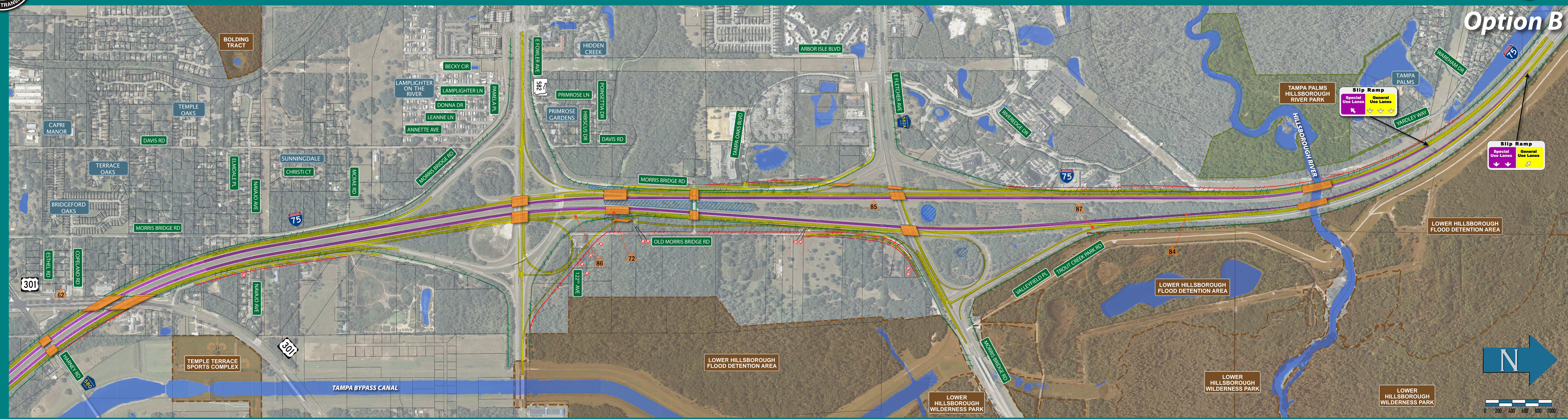
# INTERSTATE 75

# SEGMENT THREE



NORTHERN STUDY - FROM SOUTH OF US 301 TO NORTH OF FLETCHER AVENUE IN HILLSBOROUGH COUNTY (WPI Segment No. 419235-3)  
 SOUTHERN STUDY - FROM MOCCASIN WALLOW ROAD IN MANATEE COUNTY TO SOUTH OF US 301 IN HILLSBOROUGH COUNTY (WPI Segment No. 419235-2)

# Alternative 1



# Alternative 2

