




Overpass Road: Pasco County, FL






Farmlands Assessment

Legend

-  Existing ROW
-  Proposed Ponds
-  Proposed Area of ROW Expansion


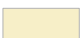

NRCS Soils June 12

FRMLNDCL

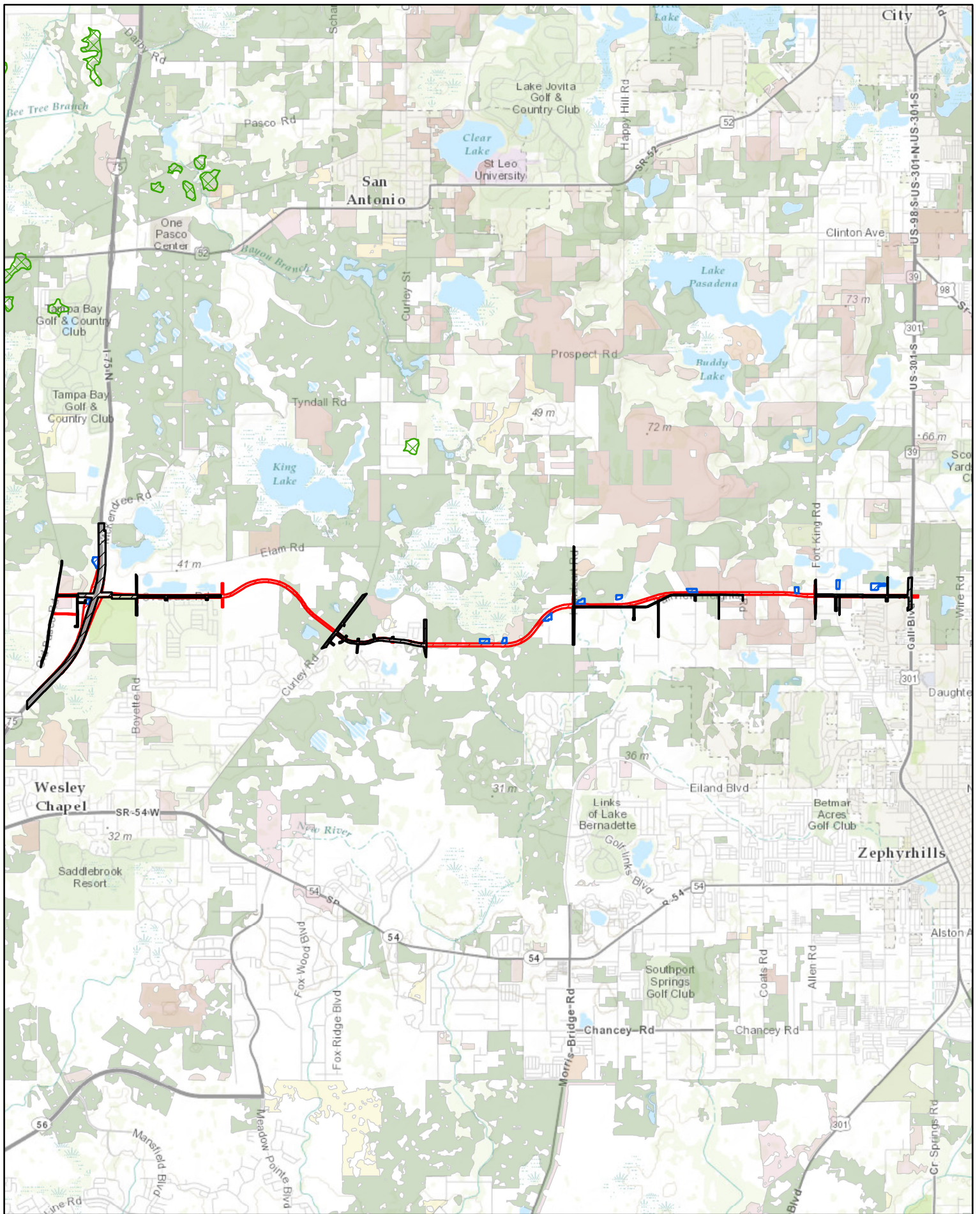
-  ALL AREAS ARE PRIME FARMLAND
-  PRIME FARMLAND IF DRAINED
-  PRIME FARMLAND IF DRAINED AND PROTECTED
-  FARMLAND OF UNIQUE IMPORTANCE
-  FARMLAND OF LOCAL IMPORTANCE

LU SWFWMD 2011

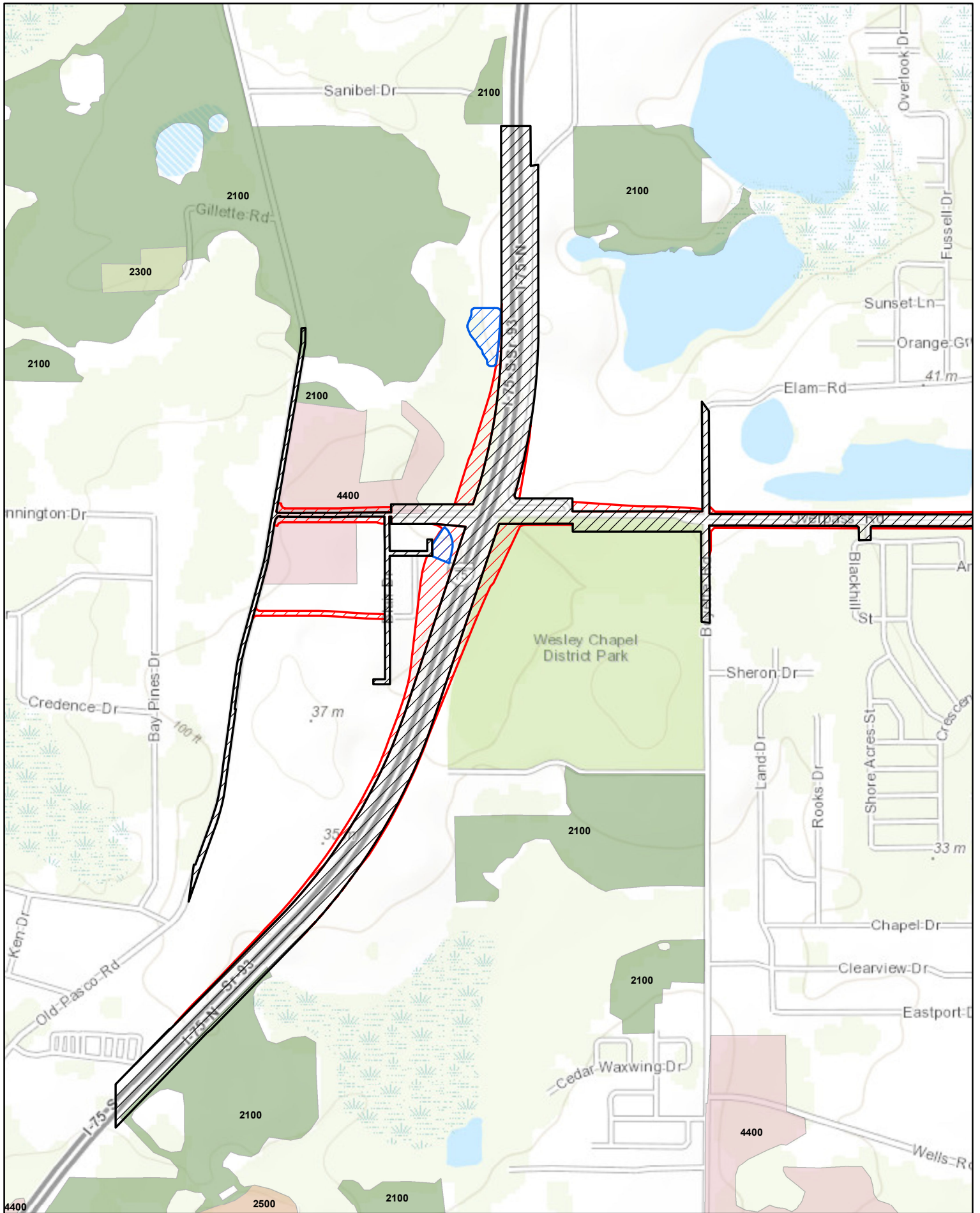
FLUCSDESC

-  CROPLAND AND PASTURELAND - 2100
-  FEEDING OPERATIONS - 2300
-  MIXED RANGELAND - 3300
-  NURSERIES AND VINEYARDS - 2400
-  ROW CROPS - 2140
-  SPECIALTY FARMS - 2500
-  TREE CROPS - 2200
-  TREE PLANTATIONS - 4400
-  TROPICAL FISH FARMS - 2550

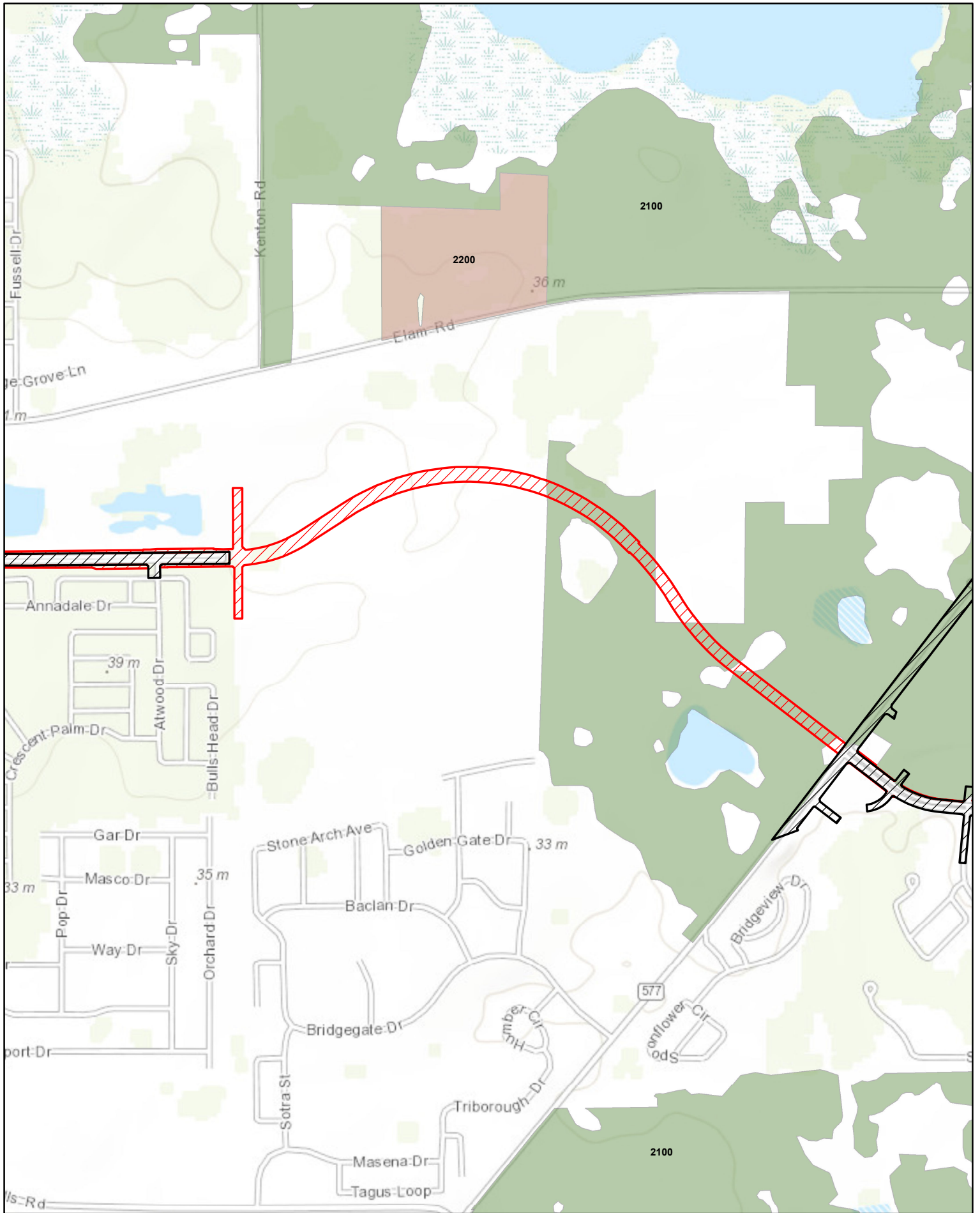
*Note: NRCS Soils and SWFWMD Land Use Data downloaded from FGDL March 23, 2015. Analysis completed March 25, 2015. ROW files created from preliminary design files dated March 2015.



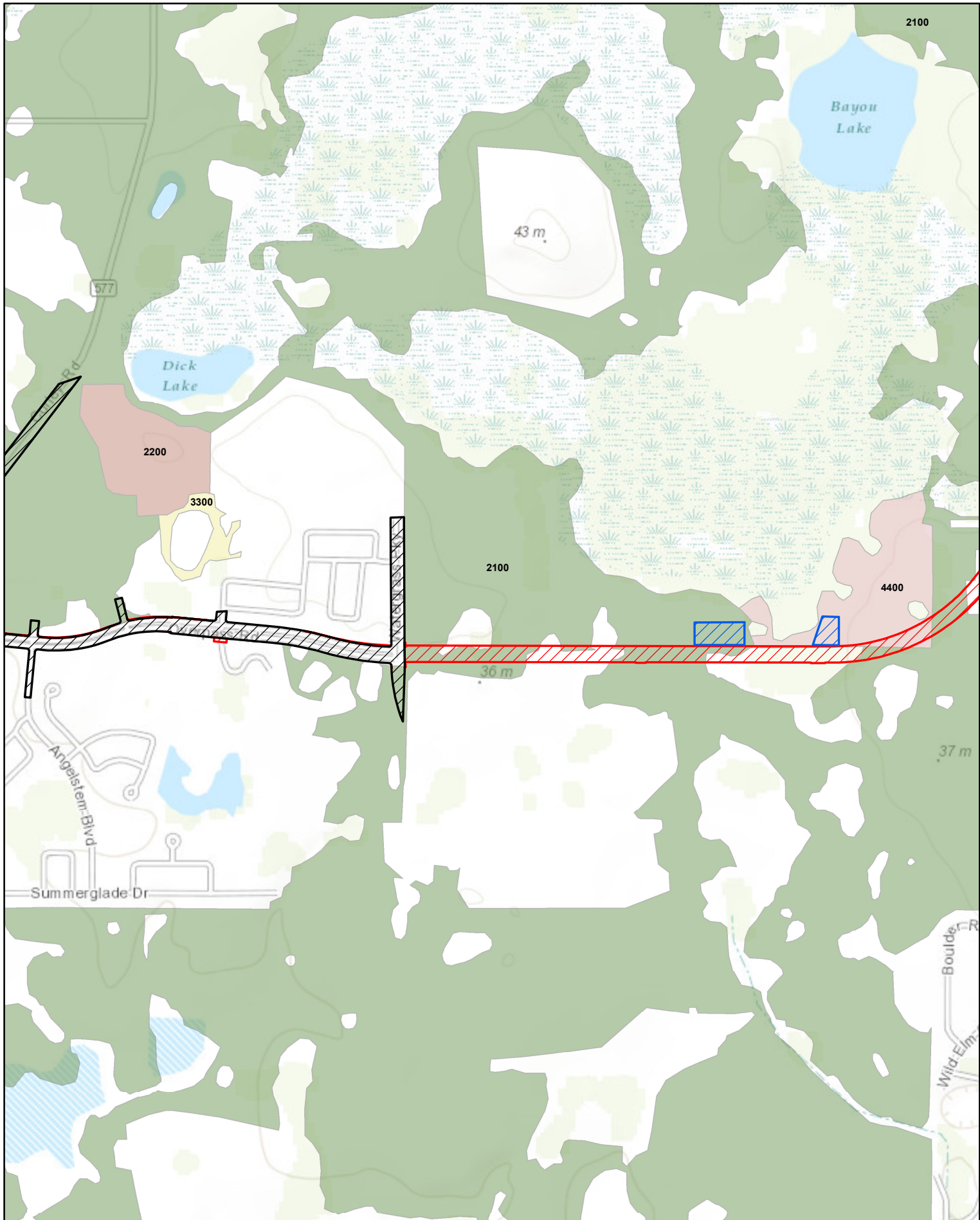
**Overpass Road: Pasco County, FL
Farmlands Impact Assessment**



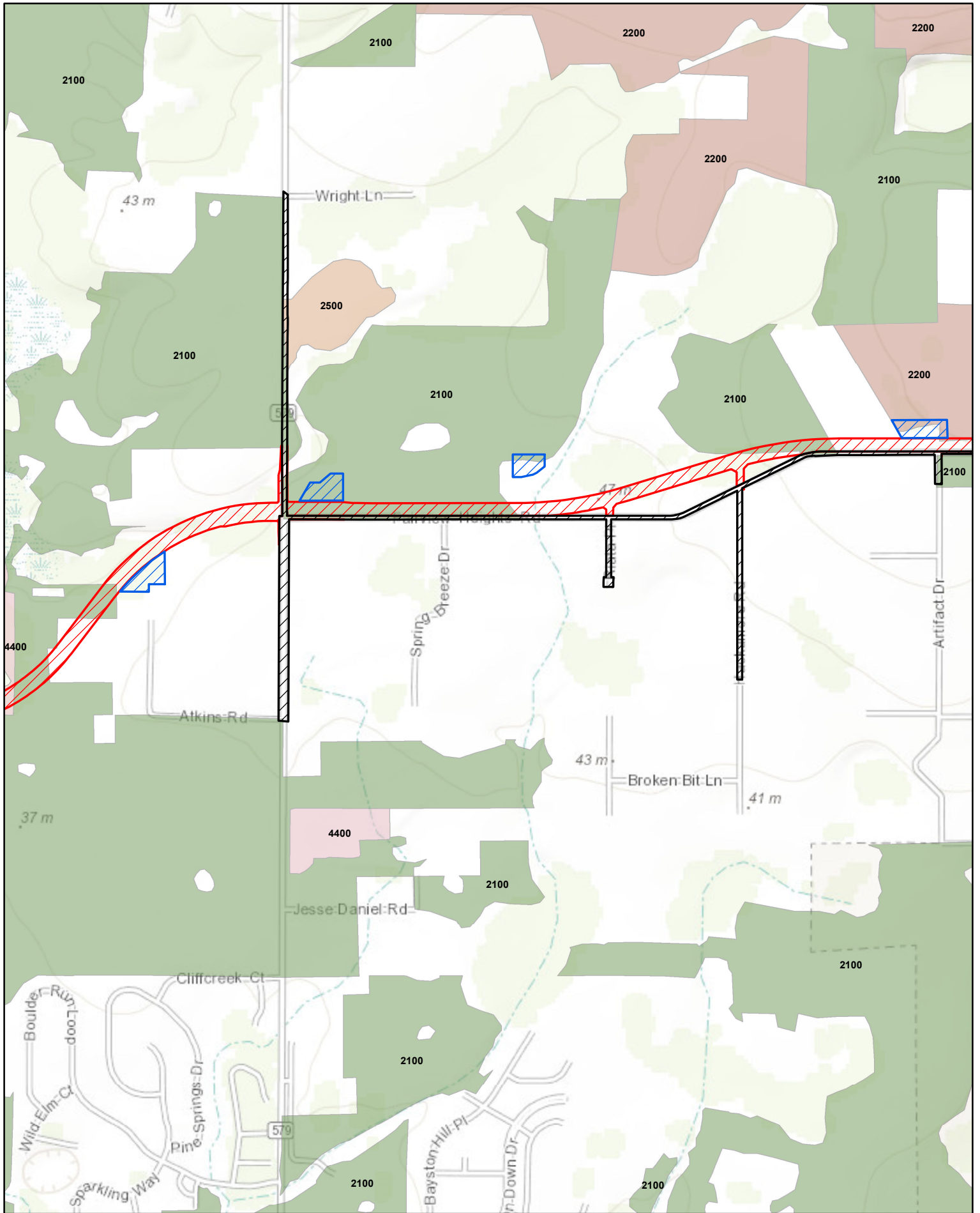
**Overpass Road: Pasco County, FL
Farmlands Impact Assessment**



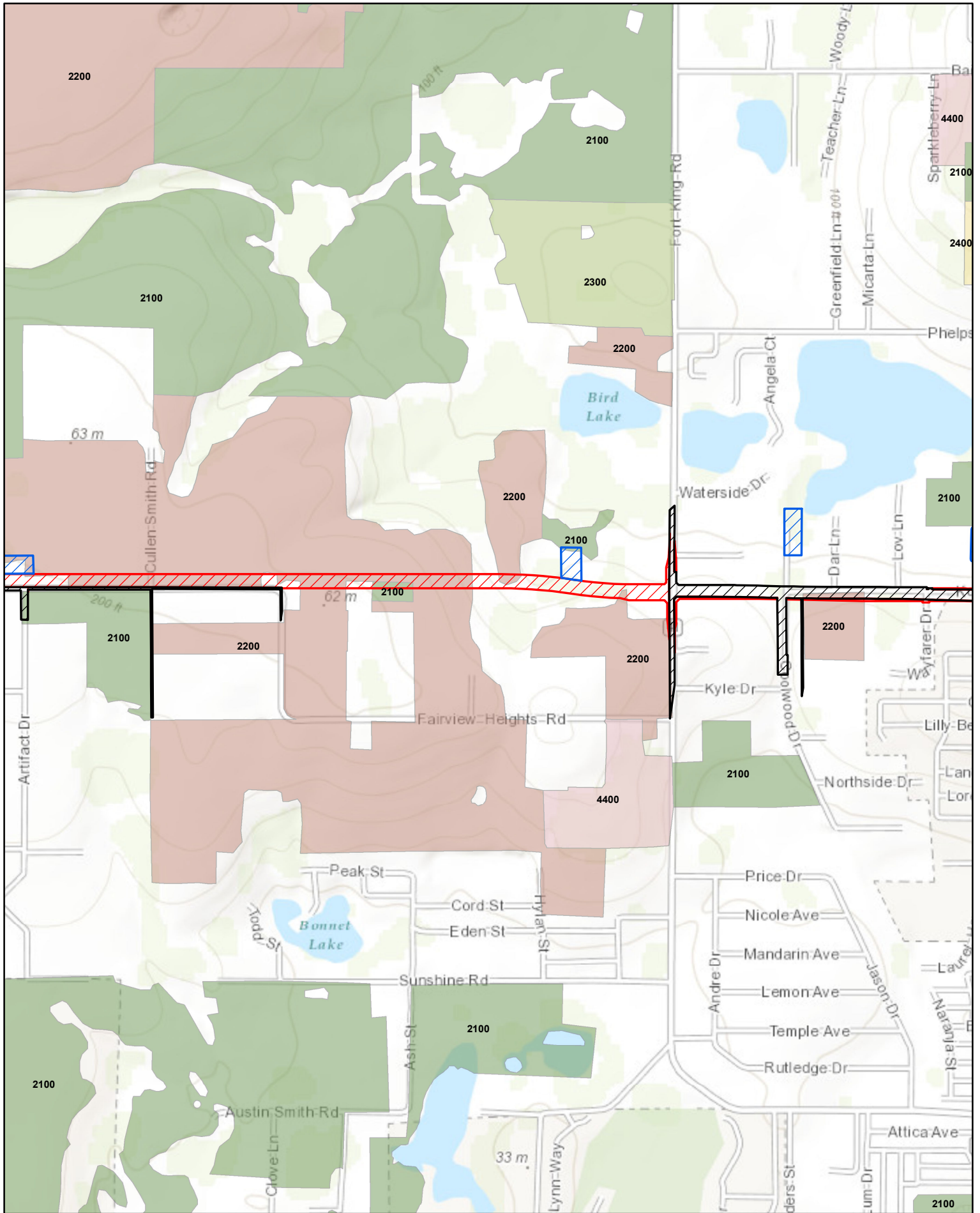
**Overpass Road: Pasco County, FL
Farmlands Impact Assessment**



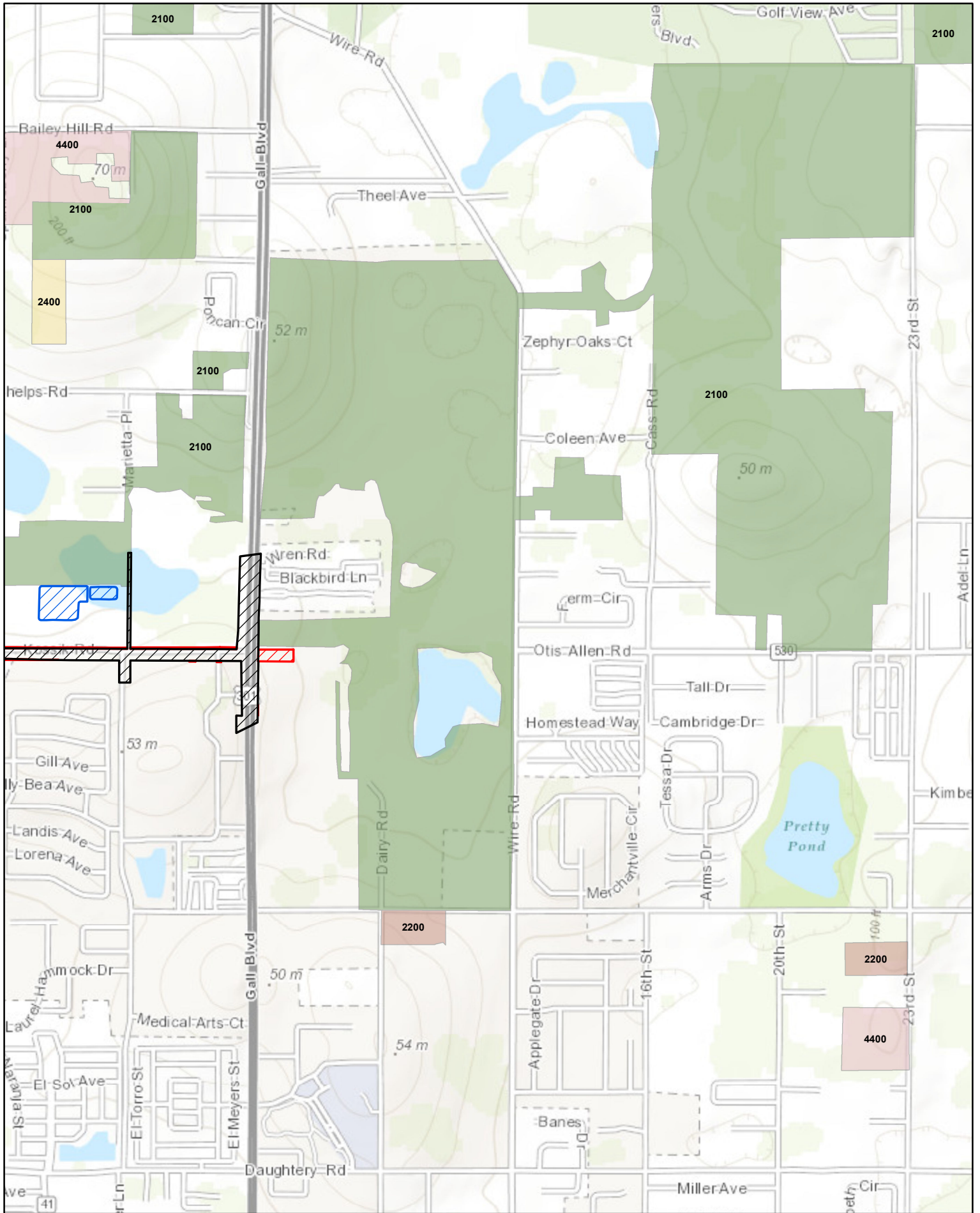
**Overpass Road: Pasco County, FL
Farmlands Impact Assessment**



**Overpass Road: Pasco County, FL
Farmlands Impact Assessment**



**Overpass Road: Pasco County, FL
Farmlands Impact Assessment**



**Overpass Road: Pasco County, FL
Farmlands Impact Assessment**