



SR 693 (Pasadena Avenue) Corridor Study

From Shore Drive South to 66th Street
Pinellas County, Florida



This newsletter is the first in a series prepared by the FDOT to help keep you (the public) informed about the

SR 693 (Pasadena Avenue) Corridor Study

For more information contact:

Brian Shroyer, CPM
Project Manager
FDOT District Seven
11201 N. Malcolm McKinley Drive
Tampa, FL 33612
813-975-6449
brian.shroyer@dot.state.fl.us

Kris Carson
Public Information Director
FDOT District Seven
11201 N. Malcolm McKinley Drive
Tampa, FL 33612
813-975-6060
kristen.carson@dot.state.fl.us

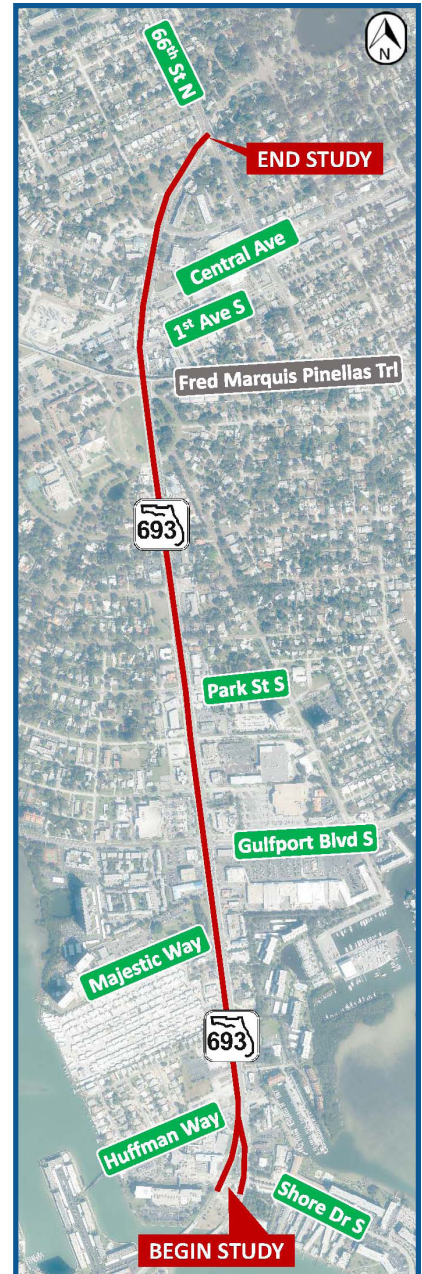
Or visit the website at:
www.fdot7studies.com/pasadenaave

Project Details

The Florida Department of Transportation (FDOT) District Seven is conducting a corridor planning study along SR 693 (Pasadena Avenue) from Shore Drive South to 66th Street in Pinellas County – a distance of approximately 1.659 miles. SR 693 (Pasadena Avenue) is a north-south roadway that serves as a major commercial and commuter highway. The southern section of the project (Shore Drive South to Park Street) is within South Pasadena's city limits and the northern section of the project (Park Street to 66th Street) is within St. Petersburg's city limits.

The purpose of this study is to work with the community, stakeholders and a Project Advisory Group to develop a vision and identify a series of goals and objectives to enhance and improve the corridor by identifying proposed short-term and long-term recommendations. This may include improving capacity issues, traffic operations, safety, access and egress, traffic signal timing, intersection lighting, freight movements, transit operations, as well as bicycle and pedestrian movements.

The study, which began in January 2017, is expected to continue for approximately 24 months and will include technical work and data analysis, along with various opportunities for the public to be involved in discussing a vision SR 693 (Pasadena Avenue) that makes it accessible for all users.



Get Involved !

We want to hear from you about the concerns, issues, comments, and ideas that you have in order to help us determine the most appropriate conceptual design alternatives along the SR 693 (Pasadena Avenue) corridor. Please visit the website to fill out a survey and/or utilize our "Virtual Comment Tool".

SR 693 (Pasadena Avenue) Corridor Study
 From Shore Drive South to 66th Street
 Florida Department of Transportation
 11201 N. Malcolm McKinley Drive
 Tampa, FL 33612



Project Contacts

We encourage you to participate in the SR 693 (Pasadena Avenue) Corridor Study and invite your questions and comments. We are also available to meet with your group or neighborhood association. If you have questions regarding the project or would like to schedule a meeting, please contact the FDOT Project Manager, Brian Shroyer, at 813-975-6449 or via email at brian.shroyer@dot.state.fl.us. Written comments and questions can be faxed to 813-975-6443 or mailed to:

SR 693 (Pasadena Avenue) Corridor Study
 Attn: Brian Shroyer, CPM
 Florida Department of Transportation
 11201 N. Malcolm McKinley Drive
 Tampa, FL 33612

Visit the project website:

www.fdotd7studies.com/pasadenaave

Public participation is solicited without regard to race, color, national origin, age, sex, religion, disability or family status. Persons who require special accommodations under the Americans with Disabilities Act or persons who require translation service (free of charge) should contact Christopher Speese, Public Involvement Coordinator, at 813-975-6405 or 1-800-226-7220. If you are hearing or speech impaired, please contact the agency using the Florida Relay Service, 1-800-955-8771 (TDD) or 1-800-955-8770 (Voice).

Comuníquese Con Nosotros

Nos importa mucho la opinión del público sobre el proyecto. Si usted tiene preguntas o comentarios, o si simplemente desea más información, por favor comuníquese con nuestra representante, Lilliam Escalera, 813-975-6403, Departamento de Transportación de Florida, 11201 N. McKinley Dr., Tampa, FL 33612, lilliam.escalera@dot.state.fl.us.

The environmental review, consultation, and other actions required by applicable federal environmental laws for this project are being, or have been, carried out by the Florida Department of Transportation (FDOT) pursuant to 23 U.S.C. §327 and a Memorandum of Understanding dated December 14, 2016 and executed by the Federal Highway Administration and FDOT.