

Project Contacts

Brian Shroyer, CPM
Project Manager
11201 N. Malcolm McKinley Drive
Tampa, FL 33612
813-975-6449
brian.shroyer@dot.state.fl.us

Kris Carson
Public Information Officer
11201 N. Malcolm McKinley Drive
Tampa, FL 33612
813-975-6060 or 800-226-7220
kristen.carson@dot.state.fl.us

The environmental review, consultation, and other actions required by applicable federal environmental laws for this project are being, or have been, carried out by the Florida Department of Transportation (FDOT) pursuant to 23 U.S.C. §327 and a Memorandum of Understanding dated December 14, 2016 and executed by the Federal Highway Administration and FDOT.

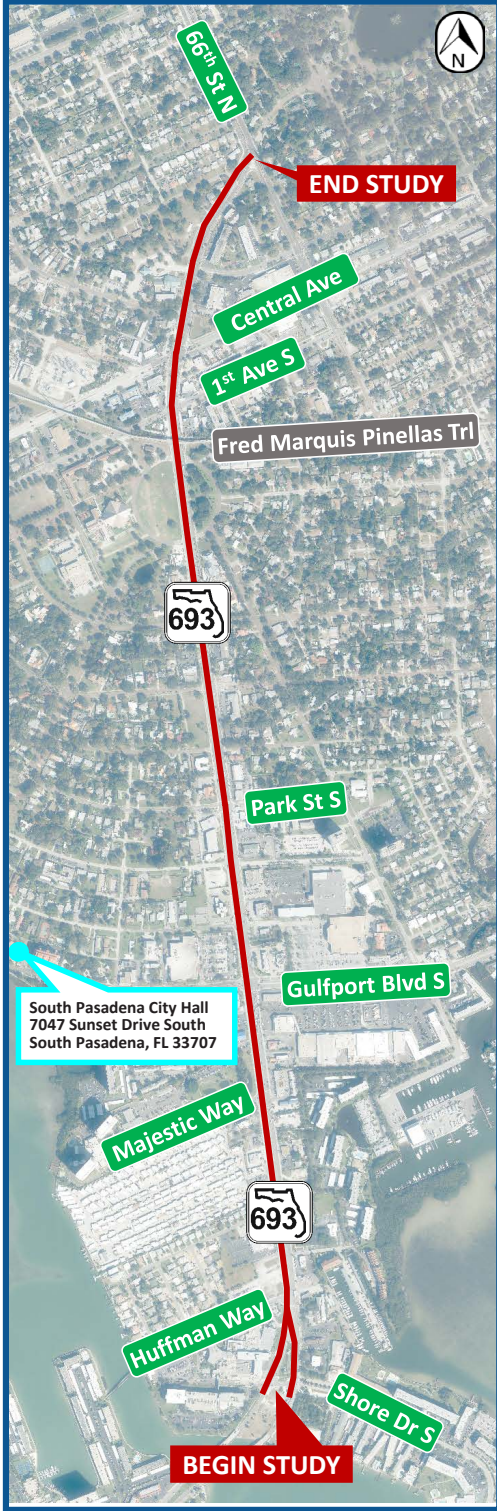
Public participation is solicited without regard to race, color, national origin, age, sex, religion, disability or family status. Persons who require special accommodations under the Americans with Disabilities Act or persons who require translation service (free of charge) should contact Christopher Speese, Public Involvement Coordinator, at 813-975-6405 or 1-800-226-7220. If you are hearing or speech impaired, please contact the agency using the Florida Relay Service, 1-800-955-8771 (TDD) or 1-800-955-8770 (Voice).

Comuníquese Con Nosotros
Nos importa mucho la opinión del público sobre el proyecto. Si usted tiene preguntas o comentarios, o si simplemente desea más información, por favor comuníquese con nuestra representante, Lilliam Escalera, 813-975-6403, Departamento de Transportación de Florida, 11201 N. McKinley Dr., Tampa, FL 33612, lilliam.escalera@dot.state.fl.us.



SR 693 (Pasadena Avenue) Corridor Study

From Shore Drive South to 66th Street
Pinellas County, Florida



You are Invited to the Visioning Workshop!

- DATE:** October 24, 2017
- TIME:** 5:00 p.m. to 7:00 p.m.
- PLACE:** South Pasadena City Hall
7047 Sunset Drive South
South Pasadena, FL 33707

The Florida Department of Transportation (FDOT), District Seven, will be holding a SR 693 (Pasadena Avenue) Corridor Study Visioning Workshop to provide information and gather feedback about the project corridor. The study limits encompass approximately 1.66 miles of SR 693 (Pasadena Avenue) from Shore Drive South to 66th Street in Pinellas County. The southern section of the project (Shore Drive South to Park Street) is within South Pasadena's city limits and the northern section of the project (Park Street to 66th Street) is within St. Petersburg's city limits. The purpose of this study is to work with the community, stakeholders and a Project Advisory Group (PAG) to develop a vision and identify a series of goals and objectives to enhance and improve the corridor. The workshop will include a PowerPoint presentation followed by an open discussion. People attending the workshop may review project displays and speak one-on-one with project team members.

More Project Information

This newsletter is the second in a series prepared by the FDOT to help keep you (the public) informed about the SR 693 (Pasadena Avenue) Corridor Study. A third newsletter will be published in advance of the Alternatives Public Workshop. Updated project information can be found on the project website throughout the study period at:

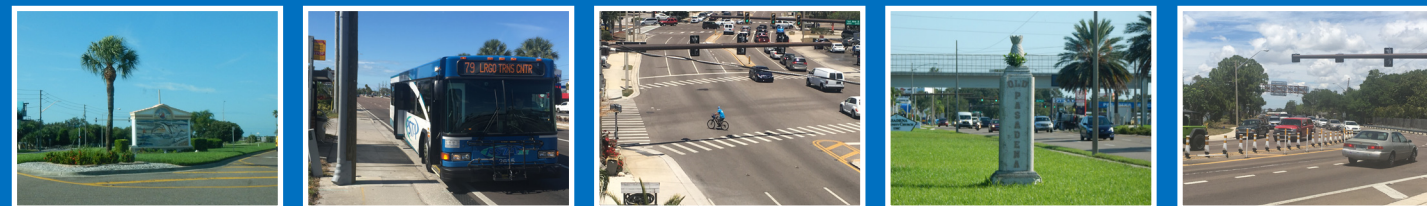
www.fdotd7studies.com/pasadenaave

If you would like to receive updated communication directly, please visit our project website and leave a comment on the Send Us Your Comments page.



SR 693 (Pasadena Avenue) Corridor Study

From Shore Drive South to 66th Street
Pinellas County, Florida



What is a Corridor Study?

A corridor study is the first step in planning by defining the corridor's needs. A corridor study generally defines the relationships between a roadway and its adjacent land. Corridor studies are also used to: define acceptable levels of access and mobility; determine transportation system needs to support surrounding land uses, and identify operational deficiencies, among other things. This corridor study will include establishing a shared vision that will allow the community to help set project goals and objectives. The vision will guide the project team to develop a set of improvements that leverage local resources, match local conditions and desires, and are consistent with ongoing planning and development efforts.

Corridor Components

1

VISIONING AND CONSENSUS

Establishing a shared vision and consensus allows the community to set project goals and objectives. Understanding needs and developing support from the community is vital to start the planning, design and implementation processes.

2

PLANNING AND CONCEPTUAL DESIGN

Communities should leverage local resources and knowledge to assist in guiding project activities to best meet the needs of their community. Tailoring best practices to match up with local conditions and desires will assist in developing an implementable, successful planning study.

We Need Your Input!

The public plays an important role in the project development and decision-making process of this study. We invite you to get involved! We want to hear from you about the concerns, issues, comments, and ideas that you have in order to help us define the challenges and develop the most appropriate conceptual design alternatives for the SR 693 (Pasadena Avenue) Corridor Study. Please visit the project website to provide feedback by:

- Helping us understand issues on the corridor by taking the short survey (see Survey page).
- Identifying specific issues using the Virtual Comment Tool located under the Public Involvement page.
- Leaving a comment on the Send Us Your Comments page.

Visit the project website:
www.fdotd7studies.com/pasadenaave

Project Schedule

The SR 693 (Pasadena Avenue) Corridor Study began in January 2017 and is anticipated to be completed in 24 months. Project Activities include:

- Collecting necessary information to identify the transportation issues and their causes along SR 693 (Pasadena Avenue) within the project limits.
- Coordinating with key stakeholders and engaging the public in order to develop a vision for the corridor that can help support ongoing and future planning efforts.
- Developing short-term and long-term solutions to meet current and future needs that align with the corridor vision, and improve traffic operations and safety conditions.

TASK	2017												2018				
	JAN	FEB	MAR	APR	MAY	JUN	JUL	AUG	SEP	OCT	NOV	DEC	JAN	FEB	MAR	APR	
Study Begins	★																
Data Collection / Analysis	■																
Kick-Off Meeting					◆												
Project Advisory Group Meetings						◆				◆						◆	
Mailings / Newsletters					✉				✉				✉				
Public Meetings									◆				◆				
Analysis / Alternatives Development						■											
Submit Draft Alternative & Strategies Report																	●