



SR 693 (Pasadena Avenue) Corridor Study

From Shore Drive South to 66th Street

Work Program Item (WPI) Number: 435910-1 | Pinellas County



Welcome & Introductions



AGENDA

1. Welcome & Introductions
2. Project Description & Scope of Work
3. Wiki Maps Overview
4. Group Exercises
 - Define the Issues
 - Emergent Themes
 - Survey
5. Closing Remarks & Adjourn

Welcome & Introduction

- House Keeping
 - Sign-in & comment sheets
 - Name tags
 - Restrooms & exits
- Introductions

Hello
my name is

- Name and Title
- Organization
- Briefly describe your interest or “stake” in SR 693 (Pasadena Avenue) Corridor Study

Project Description & Scope of Work

- Corridor study limits - Shore Drive South/Mathews Road to 66th Street
 - Project length is 1.659 miles
 - Urban arterial
 - Mostly 6 lanes with a short segment that is 4 lanes
 - Constrained corridor
- Purpose & Need
 - Enhance multi-modal mobility and connectivity along the corridor
 - Develop short and long term strategies to address corridor needs



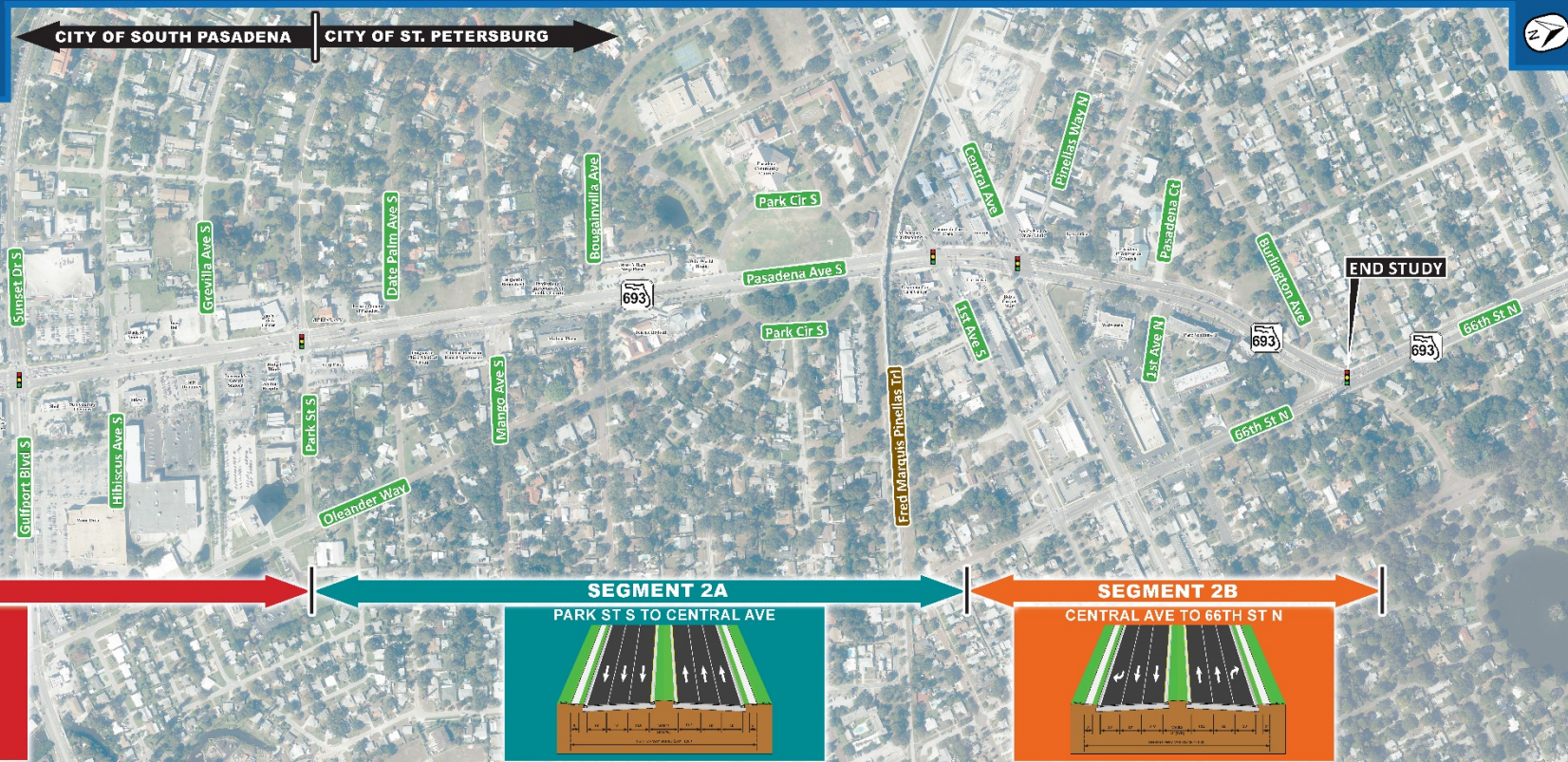
Project Description & Scope of Work



SR 693 (Pasadena Avenue) Corridor Study

From Shore Drive South to 66th Street

Work Program Item (WPI) Number: 435910-1 | Pinellas County



Wiki Maps Overview

Home » Public Involvement » Virtual Comment Tool

myTBI.com | fdot7studies.com | **ACTIVE STUDY**

SR 693 (Pasadena Avenue) Corridor Study

From Shore Drive South to 66th Street | WPI No. 435910-1 | Pinellas County, Florida

Home | What is a Corridor Study? | Project Details | Public Involvement | Project Documents | Project Schedule | Contact Information | Send Us Your Comments | Survey

Virtual Comment Tool

The public plays an important role in the project development and decision-making process of this study. We invite you to get involved! We want to hear from you about the concerns, issues, comments, and ideas that you have in order to help us define the challenges and develop the most appropriate conceptual design alternatives for the SR 693 (Pasadena Avenue) Corridor Study.

Click the image below to view the SR 693 (Pasadena Avenue) Corridor Study virtual comment tool.

search here ...

What's New?

The Florida Department of Transportation (FDOT), District Seven, is conducting a corridor planning study along SR 693 (Pasadena Avenue) from Shore Drive South to 66th Street in Pinellas County – a distance of approximately 1.659 miles. SR 693 (Pasadena Avenue) is a north-south roadway that serves as a major commercial and commuter highway that traverses through the City of South Pasadena and City of Saint Petersburg. The corridor itself is an evacuation route and viewed as a gateway from the central business district and outlying areas of the City of St. Petersburg to the northern end of the St. Pete Beach communities.

[>> read more](#)










Send us your Comments

We invite you to get involved! The public plays an important role in the project development and decision-making process of this study. Send us your comments and ideas to help us determine the most appropriate conceptual design alternatives along the SR 693 (Pasadena Avenue) corridor.

[>> read more](#)

Issues and Concerns

Select point type and then place on map.

-  Bicycle Issue
-  Bus/Transit Issue
-  Community Identity
-  Congestion
-  Connectivity
-  Intersection Issue
-  Pedestrian Issue
-  Safety Issue
-  Trail Safety and Connections

Items to Consider

Land Use & Planned Development

Potential for
Redevelopment



Enhance
Streetscape



Increase
Walkability



Balance User
Needs



Traffic / Transit Issues & Locations

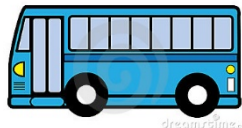
Increase
Multimodal Safety



Increase Bicycle
Facilities



Improve Transit



Enhance Street
Network



Trail Connection



Congestion
Issues



Socio-Economic Conditions

Gathering Places



Transit
Dependence

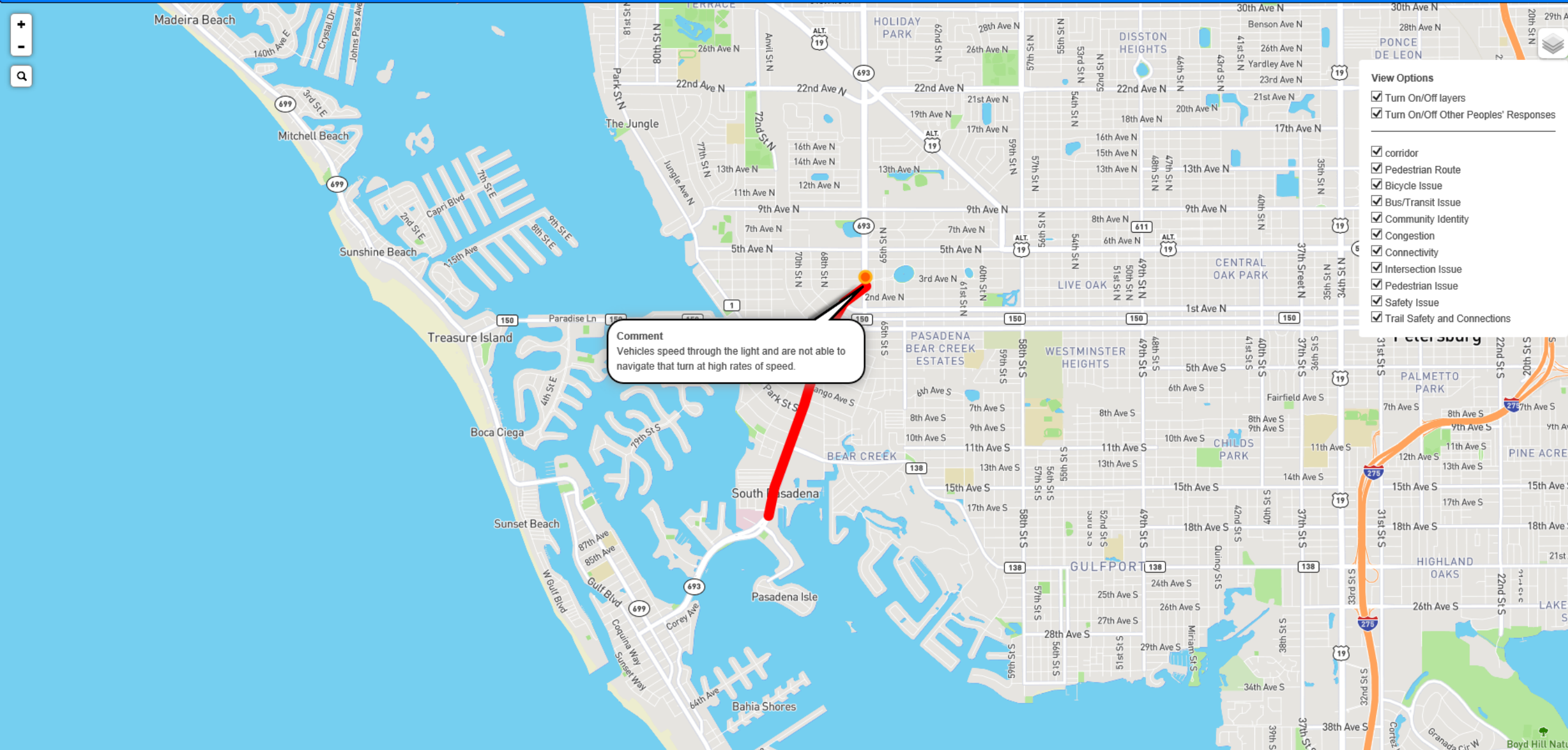


Mobility Issues



Protect Heritage/
Preserve
Environment





Comment
Vehicles speed through the light and are not able to navigate that turn at high rates of speed.

- View Options**
- Turn On/Off layers
 - Turn On/Off Other Peoples' Responses

 - corridor
 - Pedestrian Route
 - Bicycle Issue
 - Bus/Transit Issue
 - Community Identity
 - Congestion
 - Connectivity
 - Intersection Issue
 - Pedestrian Issue
 - Safety Issue
 - Trail Safety and Connections

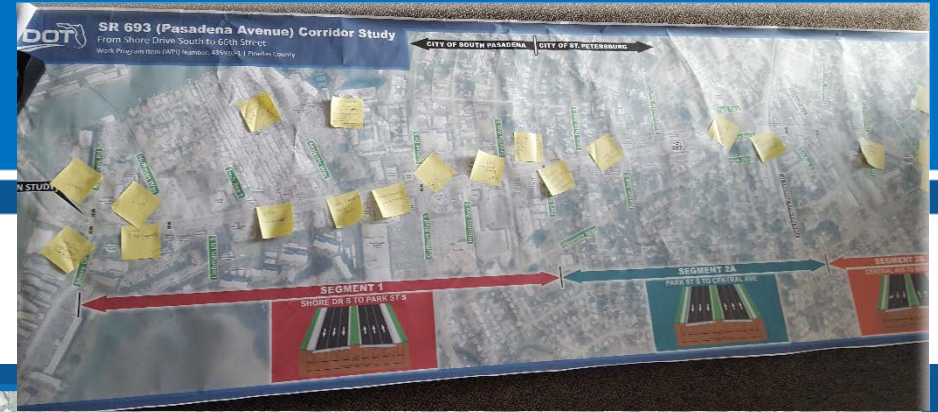
Corridor Map Exercise



SR 693 (Pasadena Avenue) Corridor Study

From Shore Drive South to 66th Street

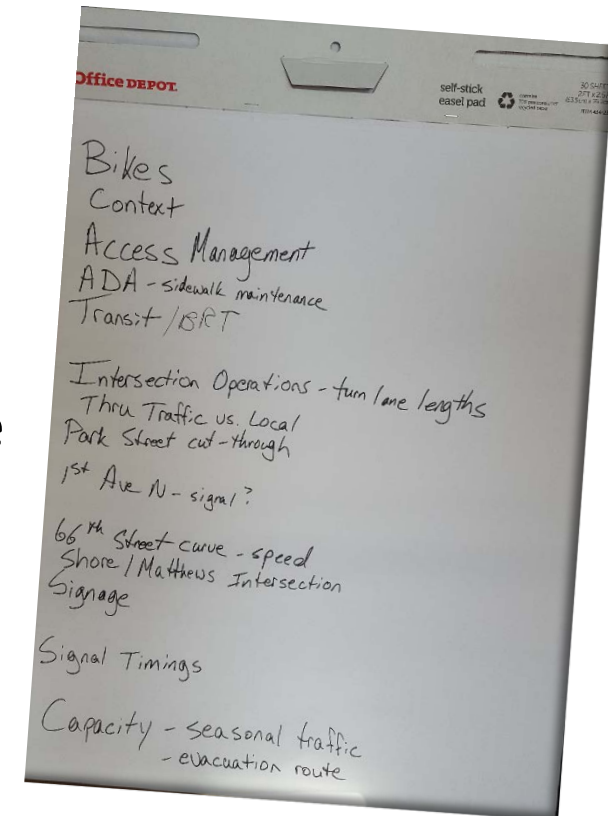
Work Program Item (WPI) Number: 435910-1 | Pinellas County



Emergent Themes Exercise

- Bikes
- Context
- Access Management
- ADA – Sidewalk Maintenance
- Transit/BRT
- Intersection Operations – Turn Lane Lengths
- Thru Traffic vs. Local
- Park Street Cut-through
- 1st Avenue N = Signal?

- 66th Street Curve – Speed
- Shore/Mathews Intersection
- Signage
- Signal Timings
- Capacity
 - Seasonal Traffic
 - Evacuation Route



Project Survey

SR 693 (Pasadena Avenue) Corridor Study

The Florida Department of Transportation (FDOT) District Seven is conducting a corridor planning study along SR 693 (Pasadena Avenue) from Shore Drive South to 66th Street in Pinellas County – a distance of approximately 1.659 miles. SR 693 (Pasadena Avenue) is a north-south roadway that serves as a major commercial and commuter highway. The southern section of the project (Shore Drive South to Park Street) is within South Pasadena's city limits and the northern section of the project (Park Street to 66th Street) is within St. Petersburg's city limits.

The purpose of this study is to work with the community, stakeholders and a Project Advisory Group to develop a vision and identify a series of goals and objectives to enhance and improve the corridor by identifying proposed short-term and long-term recommendations. This may include improving capacity issues, traffic operations, safety, access and egress, traffic signal timing, intersection lighting, freight movements, transit operations, as well as bicycle and pedestrian movements.

Public participation is solicited without regard to race, color, national origin, age, sex, religion, disability, or family status.

Please let us know your thoughts on SR 693 (Pasadena Avenue).

Please provide your zip code.

Your answer _____

How do you use SR 693 (Pasadena Avenue)? Please choose all that apply.

- I live on or near the corridor
- I work on or near the corridor
- I travel on SR 693 (Pasadena Avenue) primarily for local trips
- I travel on SR 693 (Pasadena Avenue) primarily for regional trips
- Other: _____

FDOT
SR 693 (Pasadena Avenue) Corridor Study
From Shore Drive South to 66th Street
Pinellas County, Florida

SR 693 (Pasadena Avenue) Corridor Study
Work Program Item (WPI) Number: 435910-1

The Florida Department of Transportation (FDOT) District Seven is conducting a corridor planning study along SR 693 (Pasadena Avenue) from Shore Drive South to 66th Street in Pinellas County – a distance of approximately 1.659 miles. SR 693 (Pasadena Avenue) is a north-south roadway that serves as a major commercial and commuter highway. The southern section of the project (Shore Drive South to Park Street) is within South Pasadena's city limits and the northern section of the project (Park Street to 66th Street) is within St. Petersburg's city limits. The purpose of this study is to work with the community, stakeholders and a Project Advisory Group to develop a vision and identify a series of goals and objectives to enhance and improve the corridor by identifying proposed short-term and long-term recommendations. This may include improving capacity issues, traffic operations, safety, access and egress, traffic signal timing, intersection lighting, freight movements, transit operations, as well as bicycle and pedestrian movements.

Public participation is solicited without regard to race, color, national origin, age, sex, religion, disability, or family status.

Please let us know your thoughts on SR 693 (Pasadena Avenue).

1. Please provide your zip code.

2. How do you use SR 693 (Pasadena Avenue)? Please choose all that apply.

- I live on or near the corridor
- I work on or near the corridor
- I travel on SR 693 (Pasadena Avenue) primarily for local trips
- I travel on SR 693 (Pasadena Avenue) primarily for regional trips
- Other: _____

3. Do you own an automobile?

- Yes
- No

4. What is your main mode of transportation (overall)?

- Walking
- Riding a bicycle
- Driving a car
- Carpooling
- Riding a bus

What modes of transportation do you use to travel along SR 693 (Pasadena Avenue)? Please choose all that apply.

- Walking/Pedestrian
- Bicycle
- Car (Driver)
- Car (Passenger)

Rank the following areas of concern for SR 693 (Pasadena Avenue) from 1 (most important) to 6 (least important).

	1 (Most important)	2	3	4	5	6 (Least important)
Intersections						
Other						
Bicycle and Pedestrian						

What do you feel are the most important issues relating to "Intersections" along SR 693 (Pasadena Avenue)? Please choose the most important issues.

	Very Important	Somewhat Important	Less Important	No Opinion
Signalized intersections				
Unsignalized intersections				
Medians				
Improved pedestrian sidewalks at signalized intersections				
Improved pedestrian sidewalks at unsignalized intersections				

Specify specific "Intersection" areas of concern.

Page 11
Work Program Item (WPI) Number: 435910-1
Page 12

