

**S.R. 200**  
**PD&E STUDY REEVALUATION**

## **S.R. 200 PD&E Study Reevaluation**

From U.S. 41 to N. of the Marion County Line  
Citrus County, Florida  
WPI Segment No. 257188 1  
FAP No. FL62-020R

### **FINAL COMMENTS AND COORDINATION REPORT**



Florida Department of Transportation  
District 7, Tampa, Florida

December 2002

**S.R. 200**  
**PD&E STUDY REEVALUATION**

## **S.R. 200 PD&E Study Reevaluation**

From U.S. 41 to North of the Marion County Line  
Citrus County, Florida  
WPI Segment No. 257188 1  
FAP No. FL62-020R

### **FINAL COMMENTS AND COORDINATION REPORT**

Prepared by:



Ayres Associates  
Tampa, Florida

In association with:



ARCADIS G&M, Inc.  
Tampa, Florida

Prepared for:



Florida Department of Transportation  
District 7, Tampa, Florida

December 2002

# TABLE OF CONTENTS

| <u>Section</u>                                | <u>Page</u> |
|---|-------------|
| <b>1.0 INTRODUCTION .....</b>                 | <b>1</b>    |
| <b>2.0 ADVANCE NOTIFICATION PROCESS .....</b> | <b>3</b>    |
| <b>3.0 PROJECT KICKOFF LETTER .....</b>       | <b>9</b>    |
| 3.1 Project Kickoff Letter Comments.....      | 9           |
| <b>4.0 PUBLIC WORKSHOP .....</b>              | <b>10</b>   |
| 4.1 Public Workshop Comments.....             | 11          |
| <b>5.0 COORDINATION AND CONSULTATION.....</b> | <b>13</b>   |

## LIST OF FIGURES

|                                     |   |
|-------------------------------------|---|
| Figure 1 Project Location Map ..... | 2 |
|-------------------------------------|---|

## APPENDICES

|                                   |
|-----------------------------------|
| Appendix A Advance Notification   |
| Appendix B Project Kickoff Letter |
| Appendix C Public Workshop        |

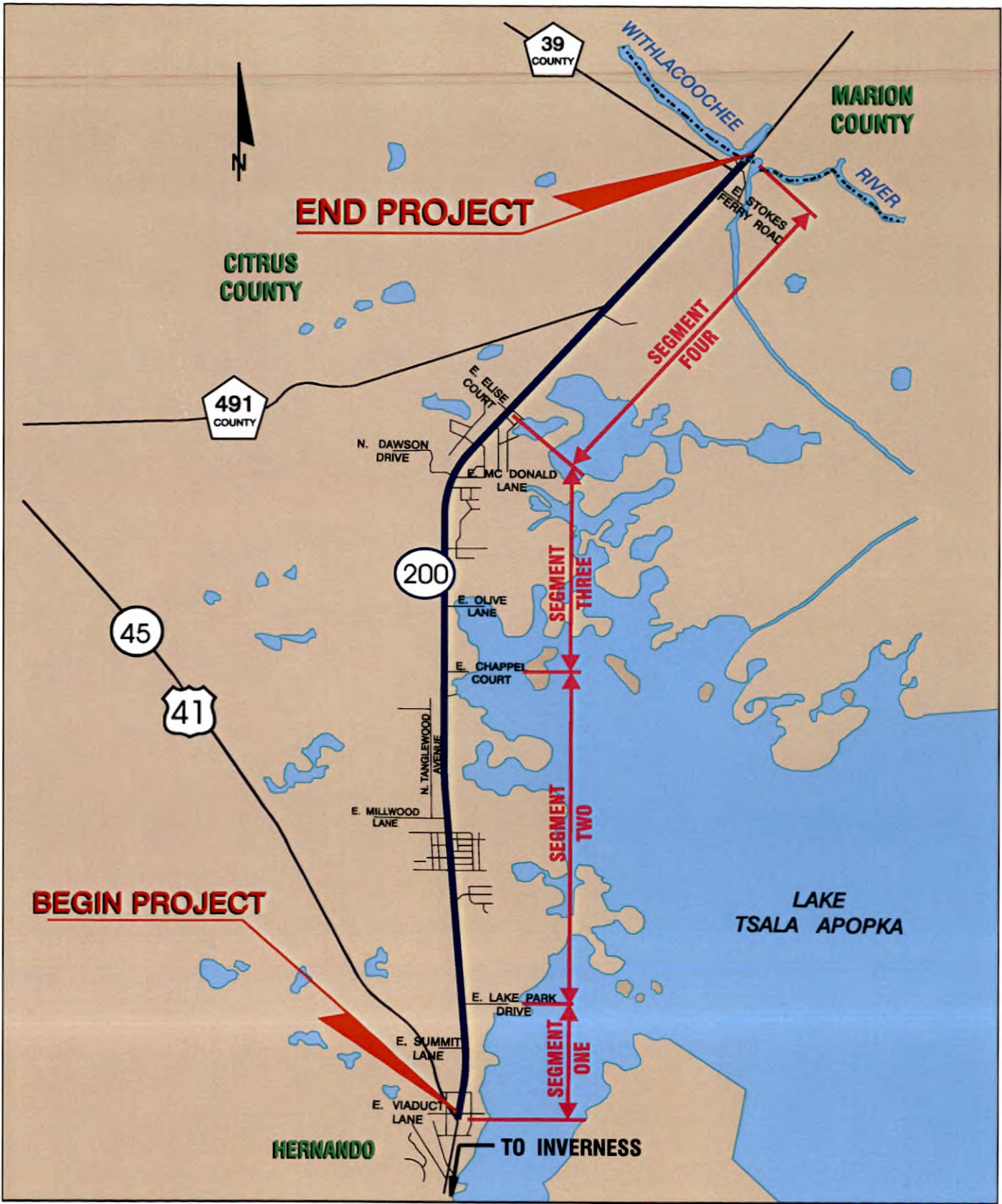
## **1.0 Introduction**

---

The Florida Department of Transportation (FDOT) has conducted a Project Development and Environment (PD&E) Study Reevaluation for the proposed improvements to S.R. 200 from U.S. 41 to north of the Marion County Line, in Citrus County, Florida. The project length is approximately 6.7 miles. The project location is shown in Figure 1.

FDOT developed and carried out a Public Involvement Program which was an integral part of this project. The purpose of this program was to establish and maintain communication with the public, elected officials, and agencies concerned with the project and its potential effects.

This report provides the documentation associated with the Public Involvement Program conducted for the proposed improvements to the S.R. 200 corridor. Included in this report are summaries of public coordination events, meetings, and public comments that have occurred throughout the Project Development and Environment (PD&E) Study Reevaluation.



**S.R. 200**  
 PD&E Study Reevaluation

**PROJECT LOCATION MAP**

S.R. 200 PD&E Study Reevaluation  
 From U.S. 41 to N. of Marion County Line  
 Citrus County  
 WPI Seg. No. 257188 1; FAP No. FL62-020R

FIGURE 1

## **2.0 Advance Notification Process**

The FDOT, through the Advance Notification (AN) Process, informed federal, state, regional, and local agencies of this project and its scope of anticipated activities. The AN Package was distributed to the Florida State Clearinghouse on August 28, 2000. Copies of the AN Package and comments may be found in Appendix A.

Those agencies receiving the AN Package, in addition to the agencies on the Florida State Clearinghouse distribution list, are identified below:

### **Federal Agencies**

- Federal Highway Administration, Division Administrator (MS 29)
- Federal Emergency Management Agency, Natural Hazards Branch, Chief
- U.S. Department of Interior, Bureau of Land Management, Eastern States Office
- U.S. Department of Interior, U.S. Geological Survey Chief
- U.S. Department of Interior, Fish and Wildlife Service, Field Supervisor, Jacksonville
- U.S. Department of Interior, National Park Service, Southeast Regional Office
- U.S. Department of Interior, Bureau of Indian Affairs, Office of Trust Responsibilities
- U.S. Army Corps of Engineers, Regulatory Branch, District Engineer
- U.S. Department of Agriculture, Southern Region, Regional Forests
- U.S. Environmental Protection Agency, Region IV, Regional Administrator
- U.S. Department of Housing and Urban Development, Regional Environmental Officer
- U.S. Department of Health and Human Services – Center for Environmental Health and Injury Control

## State Agencies

---

- Florida Department of State, Division of Historic Resources, State Historic Preservation Officer
- Florida Fish and Wildlife Conservation Commission, Office of Environmental Services, Director
- Florida Department of Environmental Protection, West Central Field Office, Planning Department
- Southwest Florida Water Management District, Executive Director
- Florida Department of Transportation - Federal Aid Program Coordinator (MS 35)
- Florida Department of Transportation - Manager, Environmental Office (MS 37)

## Regional / Local Agencies

- Citrus County – Board of County Commissioners
- Marion County – Board of County Commissioners
- Withlacoochee Regional Planning Council

## Other

- Miccosukee Tribe of Indians of Florida
- Muskogee (Creek) Nation of Oklahoma
- Poarch Band of Creek Indians of Alabama
- Seminole Nation of Oklahoma
- Seminole Tribe of Florida

Generally, the comments indicated either consistency with applicable requirements, a request for further coordination during the project's final engineering design phase, or no anticipated impacts. Outlined below is a summary of these comments with responses if appropriate.

**Agency: State of Florida - Department of Community Affairs**

---

Comment: Based on the information contained in the application, the Department has determined that the project is consistent, to the maximum extent feasible, with the applicable comprehensive plan.

*Response: No response required.*

**Agency: Florida Fish and Wildlife Conservation Commission**

Comment: The study should include a complete accounting by acres of all upland and wetland habitats impacted as a result of the project, and a compensatory mitigation plan should be formulated for habitat replacement.

*Response: Impacts to habitats (both upland and wetland) are discussed in the Protected Species Report, attached under separate cover. Additionally, impacts to wetlands are further discussed in the Wetland Assessment Report, attached under separate cover. Potential mitigation for these impacts are discussed in each report.*

Comment: The study should include field surveys for the gopher tortoise and all species listed by our agency as endangered, threatened, or species of special concern. The mitigation plan should also include measures to avoid, minimize, or mitigate those impacts.

*Response: The project was surveyed for the occurrence of protected species. Species-specific surveys were conducted for the Florida scrub jay. These surveys, along with potential mitigation options, are discussed in the Protected Species Report, attached under separate cover.*

Comment: The issue of habitat connectivity should be addressed by the study, and the roadway design should include a longer bridge over the Withlacoochee River and floodplain and/or an upland underpass in this area.

*Response: Neither established wildlife corridors nor public lands contiguous to S.R. 200's crossing of the Withlacoochee River are present. Due to lack of a potential wildlife corridor, it was decided not to provide a longer bridge structure than required. A meeting in the field to review this request was made on March 7, 2001. Officials from both SWFWMD and Florida Fish and Wildlife Commission were in attendance.*

Comment: Drainage retention areas, borrow sites, and equipment staging areas should be sited to avoid or minimize impacts to listed species and their habitats.

*Response: Listed species and their habitats were considered in the pond siting analysis.*

**Agency: Florida Department of Environmental Protection**

Comment: The EA should include as a project alternative, the bridging of all wetland systems along the 6.7-mile project length.

*Response: Appendix A's Exhibits show the location of all wetlands. As shown, the wetlands are adjacent to the existing roadway. Measures will be taken to minimize impacts including the use of 2:1 slopes for the roadway, and location of retention/detention ponds, and other structures outside of the wetlands. The bridging of wetlands would be impractical due to the location of the wetland, and the cost associated with it.*

**Agency: Withlacoochee Regional Planning Council**

Comment: The staff at the Withlacoochee River Planning Council reviewed the above referenced project and finds it to be consistent with the goals and policies of the WRPC's adopted Strategic Regional Policy Plan for the Withlacoochee Region.

*Response: No response required.*

Comment: During the reevaluation of the project, a scrub jay survey must be completed following the Florida Game and Freshwater Fish Commission protocol. The reevaluation should also address the federally listed Red-headed Woodpecker, Eastern Indigo Snake, and any federally listed plants.

*Response: The project was surveyed for the occurrence of protected species. Species specific surveys were conducted for the Florida scrub jay. These surveys, along with potential mitigation options, are discussed in the Protected Species Report, attached under separate cover.*

**Agency: Southwest Florida Water Management District**

Comment: The significance of this corridor has also been identified by the University of Florida GeoPlan Center in contractual work conducted for the Florida Department of Transportation. This study identifies the need for a wildlife crossing at the S.R. 200/Withlacoochee River juncture.

*Response: Neither established wildlife corridors nor public lands contiguous to S.R. 200's crossing of the Withlacoochee River are present. Due to lack of a potential wildlife corridor, it was decided not to provide a longer bridge structure than required. A meeting in the field to review this request was made on March 7, 2001. Officials from both SWFWMD and Florida Fish and Wildlife Commission were in attendance.*

Comment: In order to mitigate additional fragmentation caused by higher traffic volumes and an expanded roadway, the existing bridge should be expanded 50 to 60 feet on both sides so that the flood plain and adjacent uplands are spanned. At minimum, the northern portion of the bridge should span adjacent uplands a distance of 100 feet.

*Response: See above response.*

Comment: We have reviewed the referenced project for possible impact to historic properties listed, or eligible for listing, in the *National Register of Historic Places*, or otherwise of historic or architectural value...we have reviewed the Advance Notification for the Florida Department of Transportation (FDOT) project reference above. We note that FDOT will have a cultural resource survey performed. We look forward to receiving and reviewing the resulting survey report, and to coordinating with the FDOT on this project. If the above conditions are met, the project will be consistent with the historic preservation aspects of Florida's Coastal Management Program.

*Response: A Cultural Resource Assessment Survey (CRAS) was performed to locate and identify any cultural resources within the project impact zone and to assess their significance in terms of eligibility for listing in the NRHP. The results of this assessment are documented in the CRAS Report.*

### **3.0 Project Kickoff Letter**

---

To announce the beginning of the Reevaluation, a project kickoff letter was distributed to local and regional elected officials and agency representatives (Appendix B). The letter was mailed October 9, 2000. The letter explained the need for the project, the purpose of the Reevaluation, the project schedule, and its public involvement opportunities. A project location map and comment form were also enclosed with the letter.

#### **3.1 Project Kickoff Letter Comments**

**Agency: Citrus County Engineering Services Department**

Comment: "Citrus County has a pressing need to move this project forward. SR 200 is a vital transportation corridor for movement of goods and emergency evacuation."

**Agency: Citrus County Utilities Department**

Comment: "Please coordinate with Citrus County Utilities as we are going to be installing sewer mains along SR 200."

**Agency: Marion County Parks and Recreation Department**

Comment: "In order to create a continuous greenway corridor in this area, a trail under pass and a separate underpass or bridge for the road to reconnect the hydrology of Ross Prairie and provide a wildlife corridor is necessary."

## 4.0 Public Workshop

---

The Public Workshop for the Reevaluation took place on Thursday, April 25, 2002, from 4:30 p.m. to 7:30 p.m. at the Inverness Middle School, 1950 N. U.S. 41, Inverness, Florida. The Workshop was held to inform the public of the results of the Reevaluation and to give the public an opportunity to express their views regarding specific location, design, socioeconomic effects, and environmental impacts of the proposed alternatives. Approximately 32 people attended the Workshop.

Notification letters were mailed to elected officials and agency representatives at least 25-30 days prior to the Workshop. Property owners whose property lies in whole or in part within 300 feet from the centerline of the proposed project were notified of the Workshop 21 days in advance, in accordance with Florida Statutes and the PD&E Manual. Interested citizens were also notified by letter of the Workshop.

A legal display advertisement for the Workshop was published on April 20, 2002, in the Citrus Times section of the St. Petersburg Times.

The meeting format was open and informal. Project brochures were available for all attendees. A brief continuous running video presentation about the project, aerial photographs, concept plans, and project information was available for public viewing.

The Department and its consultants were on hand before, during, and after the official workshop hours to informally discuss the project with the public, to answer questions, and to receive written comments. A court reporter was present to take down official public comments.

Persons were able to make comments as part of the Official Public Workshop Record by (1) completing the Comment Form and dropping it into the Comment Box; (2) completing and mailing the Comment Form to the FDOT District 7, and (3) making an oral statement to the court reporter in a one-to-one setting.

~~Copies of the legal display advertisement, notification letters, and brochure are included in~~  
Appendix C.

#### **4.1 Public Workshop Comments**

**Comment: Concept plan sheets.**

Three requests were received from the public requesting concept plans.

**Comment: Support the “No Build” Alternative.**

Two comment forms were received from the public requesting the “no build” alternative be selected in this project.

**Comment: Expedite the project.**

One statement was received from the public that requested the improvements to the roadway be done as soon as possible.

**Comment: Project schedule.**

One comment form received by the public requested to be notified when construction of the project would begin to affect his medical building and surrounding property.

**Comment: Add me to the project mailing list.**

Two comments forms were received from the public requesting being added to the project mailing list.

**Comment: Improve access to my business/property.**

---

Two comment forms received from the public requesting improved access to their commercial or residential property (additional median openings).

**Comment: Proposed pond sites.**

One comment form received by the public requested combining pond sites or rezoning the ponds.

**Comment: Add turn lane.**

One comment form received by the public requested a left turning lane at E. Flying Arrow Path.

## **5.0 Coordination and Consultation**

---

Coordination and consultation were accomplished through a series of meetings and correspondence over the course of the Reevaluation to ensure all appropriate parties were apprised of the project status and provided ample opportunity to submit comments.

Presentations were made through the course of the Reevaluation to the various governmental and civic/neighborhood bodies in Citrus County. These presentations were to provide updates on project development milestones, and were also coordinated with upcoming public involvement activities. This allowed the elected officials to be aware of possible issues their constituents might have regarding the project. Meetings included:

July 12, 2001 – Citrus County Officials

October 10, 2001 - Kensington Estate Property Owners Association

The Department believes that the extensive public outreach effort undertaken for this project resulted in a partnership between the local community and Department to provide a safe roadway that can accommodate future traffic needs, while addressing local issues and concerns.

---

**APPENDIX A**

**Advance Notification**



## Florida Department of Transportation

JEB BUSH  
GOVERNOR

11201 N. MCKINLEY DRIVE \* TAMPA, FL 33612-6456 \* (813) 975-6119 \* (800) 226-7220  
ENVIRONMENTAL MANAGEMENT OFFICE \* M.S. 7-500

THOMAS F. BARRY, JR.  
SECRETARY

August 28, 2000

Ms. Cheri Trainor, Coordinator  
Florida State Clearinghouse  
Department of Community Affairs  
2555 Shumard Oak Boulevard  
Tallahassee, FL 32399-2100

RE: WPI Segment No.: 257188 1 / FAP No.: FL62-020R / Advance Notification  
S.R. 200 PD&E Study Reevaluation / Citrus and Marion Counties, Florida

Dear Ms. Trainor:

The Florida Department of Transportation (FDOT) is in the process of conducting a Project Development and Environment (PD&E) Study Reevaluation for the 6.7-mile segment of S.R. 200 that extends from north of U.S. 41 in Citrus County to just north of the Marion County Line.

The attached Advance Notification Package is forwarded to your office for processing through the appropriate State agencies in accordance with Executive Order 95-359. Distribution to local and Federal agencies is being made as noted.

Although more specific comments will be solicited during the permit coordination process, we request that permitting and permit reviewing agencies review the attached information and furnish us with whatever general comments they consider pertinent at this time.

This is a Federal-aid action and the Florida Department of Transportation, in consultation with the Federal Highway Administration, will determine what degree of environmental documentation will be necessary. The determination will be based upon in-house environmental evaluations and comments received through coordination with other agencies. Please provide a consistency review for this project in accordance with the State's Coastal Zone Management Program.

In addition, please review this improvement's consistency, to the maximum extent feasible, with the approved Comprehensive Plan of the local government jurisdiction(s) pursuant to Chapter 163, Florida Statutes.

Ms. Cheri Trainor, Coordinator

Page 2

August 28, 2000

We are looking forward to receiving your comments on the project within 45 days. Should additional review time be required, a written request for an extension of time must be submitted to our office within the initial 45-day comment period.

Your comments should be addressed to:

Jeraldo Comellas, Jr., P.E.  
District Environmental Management Engineer  
Florida Department of Transportation  
11201 N. McKinley Drive / M.S. 7-500  
Tampa, FL 33612-6456

Your expeditious handling of this notice is appreciated.

Sincerely,



Jeraldo Comellas, Jr., P.E.  
District EMO Engineer

JC/MC/RKS

Enclosures

Ms. Cheri Trainor, Coordinator

Page 3

August 28, 2000

cc:

**MAILING LIST**

Federal Highway Administration, Division Administrator (MS 29)  
Federal Emergency Management Agency - Natural Hazards Branch, Chief  
U.S. Department of Commerce - Bureau of Land Management, Eastern States Office  
U.S. Department of Interior - U.S. Geological Survey Chief  
U.S. Department of Interior - Fish and Wildlife Service, Field Supervisor, Jacksonville  
U.S. Department of Interior - National Park Service, Southeast Regional Office  
U.S. Department of Interior - Bureau of Indian Affairs - Office of Trust Responsibilities  
U.S. Army Corps of Engineers - Regulatory Branch, District Engineer  
U.S. Department of Agriculture - Southern Region, Regional Forests  
U.S. Environmental Protection Agency - Region IV, Regional Administrator  
U.S. Department of Housing and Urban Development, Regional Environmental Officer  
U.S. Department of Health and Human Services - Center for Environmental Health and Injury Control  
Florida Department of State - State Historic Preservation Officer  
Florida Department of State - Tribunal Historic Preservation Officer  
Florida Fish and Wildlife Conservation Commission, Office of Environmental Services, Director  
Florida Department of Environmental Protection - West Central Field Office, Planning Department  
Southwest Florida Water Management District, Executive Director  
Federal-Aid Program Coordinator (MS 35)  
Manager, Environmental Management Office (MS 37)  
Citrus County - Board of County Commissioners  
Marion County - Board of County Commissioners  
Withlacoochee Regional Planning Council  
Miccosukee Tribe of Indians of Florida  
Muskogee (Creek) Nation of Oklahoma  
Poarch Band of Creek Indians of Alabama  
Seminole Nation of Oklahoma  
Seminole Tribe of Florida

STATE OF FLORIDA DEPARTMENT OF TRANSPORTATION  
ADVANCE NOTIFICATION FACT SHEET

1. **Need for Project:**

The subject segment of S.R. 200 was previously evaluated for improvements as part of a Project Development and Environment (PD&E) Study which was approved by the Federal Highway Administration (FHWA) in November 1996. The limits of that PD&E Study extended from U.S. 41 in Citrus County to C.R. 484 in Marion County, Florida. After consideration of the future traffic demands, motorist safety and evacuation needs, it was recommended to widen the entire length of S.R. 200 to a four-lane divided urban and/or rural facility.

2. **Description of the Project and Reevaluation Purpose:**

The S.R. 200 segment which is subject to the current PD&E Study Reevaluation extends from north of U.S. 41 in Citrus County to just north of the Marion County Line, a length of approximately 6.7 miles. The attached project location map depicts the limits of the study area.

Within the limits of the study area, S.R. 200 is a two-lane undivided facility centered within 100 feet of right-of-way. The cross section of the facility is of rural design, consistent with the adjacent land use which is predominately rural and open space. The cross section, in general, provides two 11-foot-wide travel lanes and four-foot-wide paved shoulders and drainage ditches on each side.

The project includes two bridge structures; a double box culvert over a creek approximately 4.7 miles from the beginning of the project and a bridge over the Withlacoochee River, just south of the project terminus, which is currently rated as "Functionally Obsolete".

The original PD&E Study recommended the widening of the subject segment of S.R. 200 to a four-lane divided facility. From U.S. 41 to East Lake Park Drive, a distance of approximately one mile, the widening was to occur within the existing right-of-way by providing an urban typical section. A rural typical section was recommended for the remainder of the project requiring an additional 100 feet of right-of-way. To minimize impacts, the PD&E Study recommended that the additional right-of-way be taken from the western side of S.R. 200 from East Lake Park Drive to just north of C.R. 491, where the alignment should transition to the eastern side.

In the vicinity of this project, FDOT currently proposes two other major projects which are consistent with the objectives to enhance mobility, motorist safety and evacuation expediency in the overall project region. At the southern project terminus, FDOT recently completed a PD&E Study Reevaluation which evaluated improvement alternatives for U.S. 41 from S.R. 44 in Inverness to C.R. 488, in Citrus County. This study recommended that U.S. 41 should be widened to a four-lane facility from S.R. 44 to S.R. 200. Beyond the northern project terminus to C.R. 484, S.R. 200 is currently in the Final Design phase to be widened to a four-lane rural facility in accordance with the recommendations of the PD&E Study completed in 1996.

This Reevaluation will use current data to re-assess the effects of implementing the recommendations of the original PD&E study and where possible will modify these recommendations to further minimize the effects.

STATE OF FLORIDA DEPARTMENT OF TRANSPORTATION  
ADVANCE NOTIFICATION FACT SHEET

(Continued)

3. Environmental Information:

a. Land Use:

From US 41 to East Summit Lane, the land use in the vicinity of SR 200 is, in general, commercial. From this point to the end of the project, the land use is predominantly rural and open space while some areas are developed and include light density and medium density residential uses.

b. Wetlands:

The proposed project is expected to traverse or encroach upon approximately twelve wetland systems consisting of open water (lakes and ponds), emergent marshes, and the Withlacoochee River with its forested floodplain. According to the United States Fish and Wildlife Services' (USFWS) classification, wetlands within the project include the following:

- Lacustrine, littoral, emergent, persistent;
- Palustrine, emergent, persistent, seasonally flooded; and
- Palustrine, forested, needle-leaved deciduous, intermittently flooded.

Field surveys will be performed and the project effects on wetlands will be thoroughly evaluated as part of this Reevaluation. This information will be documented and coordinated with the appropriate agencies.

c. Floodplains:

According to the Federal Insurance Administration Flood Insurance Maps (FIRM Numbers 120063 0150B and 120063 0175B), the proposed project will transverse the 100-year floodplains of Tsala Apopka Lake and the Withlacoochee River.

d. Wildlife and Habitat:

The project corridor contains a diverse array of habitats that can potentially support several protected species. Protected species which may occur within the project include (but are not limited to) the red-cockaded woodpecker, the Florida scrub jay, gopher tortoises, indigo snakes, American alligators, and a variety of wading birds. Protected flora may also occur within the zeric/scrub upland habitats. A thorough evaluation of the project corridor and coordination with the appropriate agencies will be part of the Reevaluation.

e. Outstanding Florida Waters:

Withlacoochee River and Lake Tsala Apopka have been designated as Outstanding Florida Waters within the project area.

f. Aquatic Preserves:

Not Applicable.

g. Coastal Zone Consistency Determination Required:  Yes  No

**STATE OF FLORIDA DEPARTMENT OF TRANSPORTATION**  
**ADVANCE NOTIFICATION FACT SHEET**  
(Concluded)

**h. Cultural Resources:**

A Cultural Resources Assessment Survey (CRAS) was performed in December 1994 and coordinated with the State Historic Preservation Officer (SHPO) as part of the original PD&E Study. This survey identified 21 archeological sites and three historic resources located within the limits of the Reevaluation. Five of the archeological sites were evaluated as potentially eligible for listing in the National Register of Historic Places (NRHP). None of the historic resources were considered eligible for listing in the NRHP.

The CRAS will be updated to include new field surveys and additional coordination with the SHPO.

**i. Coastal Barrier Resources:**

Not Applicable

**j. Contamination:**

A Contamination Screening Evaluation update will be conducted as part of this Reevaluation.

**k. Sole Source Aquifer:**

The project is not located within a sole source aquifer.

**l. Other Comments:**

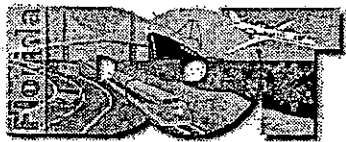
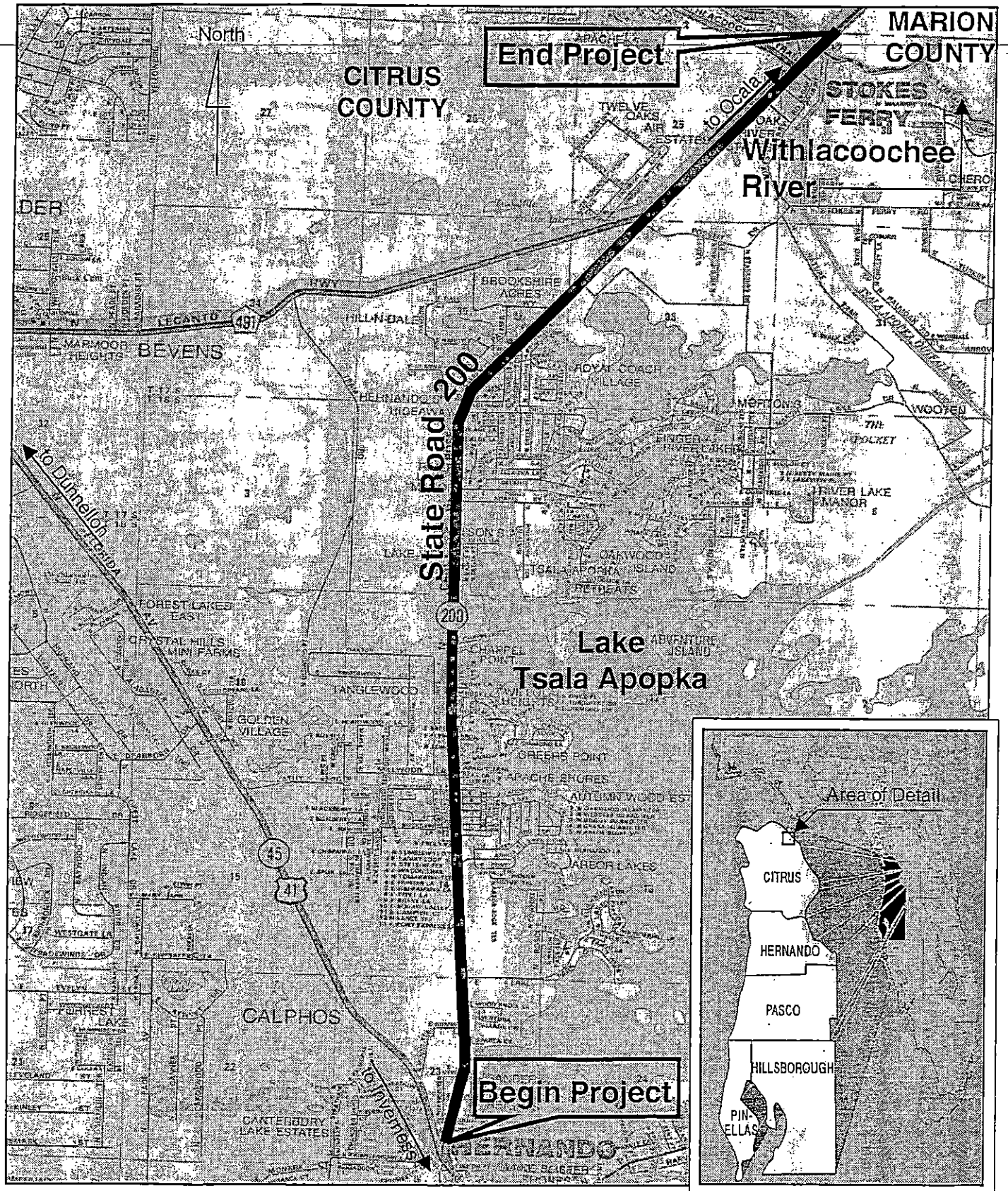
None

4. Navigable Waterway Crossing? \_\_\_ Yes  X  No

**5. List Permits Required:**

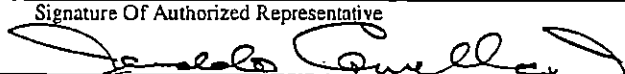
Various permit applications may be required to be filed and approved prior to construction. The list of potential agencies and permits required include, but may not be limited to, the following:

- US Army Corps of Engineers (COE) – Section 404 Dredge and Fill Permit
- Florida Department of Environmental Protection (FDEP) – Submerged Lands
- Southwest Florida Water Management District (SWFWMD) – ERP
- US Environmental Protection Agency (USEPA) – NPDES Permit



### Project Location Map

S.R. 200 PD&E Study  
 Reevaluation  
 From U.S. 41 to N. of Marion County Line  
 Citrus County  
 WPI Seg. No.: 257188 1; FAP No.: FL62-020R

|  |                        |   |  |
|--|------------------------|---|--|
| <b>APPLICATION FOR FEDERAL ASSISTANCE</b>  |                        | 2. Date Submitted<br>8/22/00  | Applicant Identifier<br>WPI Segment No. 257188 1 |
| 1. Type Of Submission:<br>Application<br><input checked="" type="checkbox"/> Construction <input type="checkbox"/> Preapplication<br><input type="checkbox"/> Non-Construction <input type="checkbox"/> Construction<br><input type="checkbox"/> Non-Construction <input type="checkbox"/> Non-Construction  |                        | 3. Date Received By State   | State Application Identifier                     |
|  |                        | 4. Date Received By Federal Agency  | Federal Identifier                               |
| <b>5. Applicant Information</b>  |                        |   |  |
| Legal Name: Florida Department of Transportation   |                        | Organizational Unit: EMO  |  |
| Address (Give City, County, State, And Zip Code):<br>605 Suwannee Street<br>Tallahassee, Leon, Florida 32399-0450  |                        | Name And Telephone Number Of The Person To Be Contacted On Matters Involving This Application (Give Area Code)<br>Jeraldo Comellas, Jr., District Environmental Management Engineer<br>813-975-6077   |  |
| 6. Employer Identification Number (EIN):<br>59-6001874   |                        | 7. Type Of Applicant: (Enter Appropriate Letter In Box)   |  |
| 8. Type Of Application:<br><input type="checkbox"/> New <input checked="" type="checkbox"/> Continuation <input type="checkbox"/> Revision<br><br>If Revision, Enter Appropriate Letter (S) In Box(ES): <input type="checkbox"/> <input type="checkbox"/><br>A. Increase Award    B. Decrease Award    C. Increase Duration<br>D. Decrease Duration    Other (Specify) |                        | A. State<br>B. County<br>C. Municipal<br>D. Township<br>E. Interstate<br>F. Intermunicipal<br>G. Special District<br><br>H. Independent School District<br>I. State Controlled Institution Of Higher Learning<br>J. Private University<br>K. Indian Tribe<br>L. Individual<br>M. Profit Organization<br>N. Other (Specify): _____ |  |
| 10. Catalog Of Federal Domestic Assistance Number:<br>20-205<br>Title:<br>Highway Planning and Construction  |                        | 9. Name Of Federal Agency:<br>U.S. Department of Transportation   |  |
| 12. Areas Affected By Project (Cities, Counties, States, Etc.):<br>Citrus and Marion Counties, Florida   |                        | 11. Descriptive Title Of Applicant's Project:<br>SR 200 PD&E Study Re-evaluation<br><br>WPI Segment No.: 257188 1   |  |
| 13. Proposed Project:  |                        | 14. Congressional Districts Of: 11  |  |
| Start Date<br>6/21/00  | Ending Date<br>6/21/02 | a. Applicant  | b. Project<br>5, 6                               |
| 15. Estimated Funding:   |                        | 16. Is Application Subject To Review By State Executive Order 12372 Process?  |  |
| A. Federal   | \$ 1,200,000           | A. Yes    Preapplication/Application Was Made Available To The State Executive Order 12372 Process For Review On:<br><br>Date: 8/22/00  |  |
| B. Applicant   | \$                     | B. No <input type="checkbox"/> Program Is Not Covered By E.O. 12372<br><input type="checkbox"/> Or Program Has Not Been Selected By State For Review  |  |
| C. State   | \$ 50,000              | 17. Is The Applicant Delinquent On Any Federal Debt?  |  |
| D. Local   | \$                     | <input type="checkbox"/> Yes    If "Yes", Attach An Explanation. <input checked="" type="checkbox"/> No   |  |
| E. Other   | \$                     |   |  |
| F. Program Income  | \$                     |   |  |
| G. Total   | \$ 1,250,000           |   |  |
| 18. To The Best Of My Knowledge And Belief, All Data In This Application/Preapplication Are True And Correct. The Document Has Been Duly Authorized By The Governing Body Of The Applicant And The Applicant Will Comply With The Attached Assurances If The Assistance Is Awarded.  |                        |   |  |
| a. Typed Name Of Authorized Representative<br>Jeraldo Comellas, Jr., P.E.  |                        | b. Title<br>District Environmental Management Engineer  | c. Telephone Number<br>813-975-6077              |
| d. Signature Of Authorized Representative<br>   |                        | e. Date Signed<br>8/28/00   |  |



STATE OF FLORIDA  
**DEPARTMENT OF COMMUNITY AFFAIRS**

*"Dedicated to making Florida a better place to call home"*

JEB BUSH  
 Governor

STEVEN M. SEIBERT  
 Secretary

RECEIVED ENVIRONMENTAL  
 MANAGEMENT OFFICE  
 2000 OCT 33 AM 10:06

October 23, 2000

Mr. Jeraldo Comellas, Jr., P.E.  
 Florida Department of Transportation  
 District Environmental Management Engineer  
 11201 North McKinley Drive, M.S. 7-500  
 Tampa, Florida 33612-6456

RE: U.S. Department of Transportation - Highway Planning and Construction -  
 Advance Notification - S.R. 200 PD&E Study Re-evaluation - WPI Segment No.:  
 257188 1 - FAP No.: FL62-020R - Citrus and Marion Counties, Florida  
 SAI: FL200009010626C

Dear Mr. Comellas:

The Florida State Clearinghouse, pursuant to Presidential Executive Order 12372, Gubernatorial Executive Order 95-359, Section 216.212, Florida Statutes, the Coastal Zone Management Act, 16 U.S.C. §§ 1451-1464, as amended, and the National Environmental Policy Act, 42 U.S.C. §§ 4321, 4331-4335, 4341-4347, as amended, has coordinated a review of the above-referenced project.

The Department of Environmental Protection (DEP) notes that an Environmental Assessment (EA) should include, as a project alternative, the bridging of all wetland systems along the 6.7-mile project length. The Florida Natural Areas Inventory database indicates the presence of breeding colony sites identified by the Florida Game and Fresh Water Fish Commission Breeding Bird Atlas Project, and scrub jay locations identified by the U.S. Fish and Wildlife Service Scrub Jay Survey. The FNAI project map and records are included as an attachment to DEP's comments. DEP requests that a copy of the EA be submitted to the State Clearinghouse for review upon completion. Please refer to the enclosed DEP comments and attachment.

The Florida Fish and Wildlife Conservation Commission (FWC) offers a number of comments pertaining to impacts to fish and wildlife resources and recommends several items to be considered in the reevaluation of the original PD&E study, so that the project is properly designed to avoid, minimize, or mitigate impacts to important fish and wildlife resources,

2555 SHUMARD OAK BOULEVARD • TALLAHASSEE, FLORIDA 32399-2100  
 Phone: 850.488.8466/Suncom 278.8466 FAX: 850.921.0781/Suncom 291.0781  
 Internet address: <http://www.dca.state.fl.us>

Mr. Jeraldo Comellas

October 23, 2000

Page Two

including listed species. FWC has been involved with wildlife issues associated with planned improvements on the entire SR-200 corridor since the early 1990s. FWC is hopeful that successful coordination will occur between District 7 and <sup>5?</sup> (1) whereby both the southern and northern sections of SR-200 are designed to protect significant wildlife resources, and preserve future land management options in an area where the state has made a substantial financial investment in public lands for the support of wildlife and recreation. Please refer to the enclosed FWC comments.

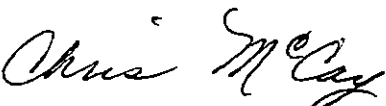
Based on the information contained in the advance notification and the enclosed comments provided by our reviewing agencies, the state has determined that, at this stage, the allocation of federal funds for the above-referenced project is consistent with the Florida Coastal Management Program (FCMP). All subsequent environmental documents prepared for this project must be reviewed to determine the project's continued consistency with the FCMP. The state's continued concurrence with the project will be based, in part, on the adequate resolution of issues identified during this and subsequent reviews.

The Department of Community Affairs (Department), pursuant to its role as the state's land planning agency, has reviewed the referenced project for consistency with the relevant local government comprehensive plan. Based on the information contained in the application, the Department has determined that the project is consistent, to the maximum extent feasible, with the applicable comprehensive plan.

In addition, the Withlacoochee Regional Planning Council (WRPC) has identified the policies and goals of their Strategic Regional Policy Plans which may apply to the proposed activity. The comments provided by the WRPC are enclosed for your review and consideration.

If you have any questions regarding this letter, please contact Ms. Cherie Trainor, Clearinghouse Coordinator, at (850) 414-5495.

Sincerely,

  
*for* Ralph Cantral, Executive Director  
Florida Coastal Management Program

RC/cc

Enclosures

cc: Susan Goggin, Department of Environmental Protection  
Bradley Hartman, Fish and Wildlife Conservation Commission  
Vivian Whittier, Withlacoochee Regional Planning Council

COUNTY: State

DATE: 09/01/2000

COMMENTS DUE DATE: 10/02/2000

CLEARANCE DUE DATE: 10/16/2000

Message:

SAT#: FL200009010626C

STATE AGENCIES

WATER MANAGEMENT DISTRICTS

OPB POLICY UNITS

X Agriculture  
 Community Affairs  
 Environmental Protection  
 Fish & Wildlife Conserv. Comm  
 OTTED  
 State

Southwest Florida WMD  
 St. Johns River WMD

Environmental Policy/C & ED

The attached document requires a Coastal Zone Management Act/Florida Coastal Management Program consistency evaluation and is categorized as one of the following:

Federal Assistance to State or Local Government (15 CFR 930, Subpart F). Agencies are required to evaluate the consistency of the activity.

Direct Federal Activity (15 CFR 930, Subpart C). Federal Agencies are required to furnish a consistency determination for the State's concurrence or objection.

Outer Continental Shelf Exploration, Development or Production Activities (15 CFR 930, Subpart E). Operators are required to provide a consistency certification for state concurrence/objection.

Federal Licensing or Permitting Activity (15 CFR 930, Subpart D). Such projects will only be evaluated for consistency when there is not an analogous state license or permit.

Project Description:

U.S. Department of Transportation - Highway Planning and Construction - Advance Notification - S.R. 200 PD&E Study Re-evaluation - WPI Segment No.: 257188 1 - FAP No.: FL62-020R - Citrus and Marion Counties, Florida.

To: Florida State Clearinghouse  
 Department of Community Affairs  
 2555 Shumard Oak Boulevard  
 Tallahassee, FL 32399-2100  
 (850) 922-5438 (SC 292-5438)  
 (850) 414-0479 (FAX)

EO, 12372/NEPA

Federal Consistency

- No Comment
- Comments Attached
- Not Applicable

- No Comment/Consistent
- Consistent/Comments Attached
- Inconsistent/Comments Attached
- Not Applicable

Jack P. Dodd, Planner  
 Division of Forestry  
 Forest Resource Planning  
 & Support Services Bureau  
 3125 Corner Blvd., Mail Stop C23  
 Tallahassee, FL 32399-1650

From: \_\_\_\_\_  
 Division/Bureau: \_\_\_\_\_  
 Reviewer: \_\_\_\_\_  
 Date: 10-2-00

RECEIVED  
 SEP 06 2000  
 Division of Forestry



STATE OF FLORIDA  
**DEPARTMENT OF COMMUNITY AFFAIRS**

*"Dedicated to making Florida a better place to call home"*

JEB BUSH  
Governor

STEVEN M. SEIBERT  
Secretary

October 16, 2000

Mr. Jeraldo Comellas, Jr., P.E.  
Florida Department of Transportation  
District Environmental Management Engineer  
11201 North McKinley Drive, M.S. 7-500  
Tampa, Florida 33612-6456

RE: U.S. Department of Transportation - Highway Planning and Construction -  
Advance Notification - S.R. 200 PD&E Study Re-evaluation - WPI Segment No.:  
257188 1 - FAP No.: FL62-020R - Citrus and Marion Counties, Florida  
SAI: FL200009010626C

Dear Mr. Comellas:

The Florida State Clearinghouse has been advised that our reviewing agencies require additional time to complete the review of the above-referenced project. In order to receive comments from all agencies, an additional fifteen days is requested for completion of the state's consistency review in accordance with 15 CFR 930.41(b). We will make every effort to conclude the review and forward the consistency determination to you on or before October 31, 2000.

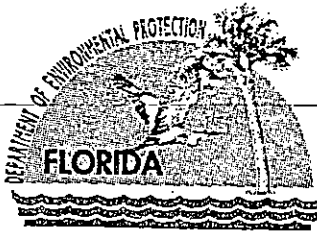
Thank you for your understanding. If you have any questions regarding this matter, please contact Ms. Cherie Trainor, Clearinghouse Coordinator, at (850) 414-5495.

Sincerely,

*for* Ralph Cantral, Executive Director  
Florida Coastal Management Program

RC/cc

2555 SHUMARD OAK BOULEVARD • TALLAHASSEE, FLORIDA 32399-2100  
Phone: 850.488.8466/Suncom 278.8466 FAX: 850.921.0781/Suncom 291.0781  
Internet address: <http://www.dca.state.fl.us>



Jeb Bush  
Governor

✓ Department of  
**Environmental Protection**

Marjory Stoneman Douglas Building  
3900 Commonwealth Boulevard  
Tallahassee, Florida 32399-3000  
13 October 2000

**RECEIVED**  
OCT 17 2000

David B. Struhs  
Secretary

Cheri Trainor  
State Clearinghouse, Dept. of Community Affairs  
2555 Shumard Oak Blvd.  
Tallahassee, FL 32399-2100

*State of Florida Clearinghouse*

RE: FDOT/AN, Widening of SR200 Re-Evaluation, Citrus & Marion Counties  
SAI: FL20009010626C

Dear Ms. Trainor,

The Department has reviewed the Advance Notification (AN) for the Study Reevaluation on the proposed widening of 6.7 miles of SR 200 in Citrus and Marion Counties. We offer the following comments on the proposed project:

1. The AN states that the SR 200 widening project will traverse 12 wetland systems, primarily associated with Lake Tsala Apopka and the Withlacoochee River. The EA should include as a project alternative, the bridging of all wetland systems along the 6.7-mile project length.
2. The Florida Natural Areas Inventory's search of the Element Occurrence Records database indicates the presence of breeding colony sites identified by the Florida Game & Fresh Water Fish Commission Breeding Bird Atlas Project, and scrub jay locations identified by the U.S. Fish & Wildlife Service Scrub Jay Survey. Other Element Occurrence Records also appear within one mile of the project area; the FNAI project map and records are included as an attachment to this letter. FNAI also states that although their database is the single most comprehensive source of information available on the locations of rare species, the data are not always based on comprehensive or site-specific field surveys. Therefore, this information should not be regarded as a final statement on the biological resources of the site being considered, nor should it be substituted for on-site surveys. Inventory data are designed for the purposes of conservation planning and scientific research, and are not intended for use as the primary criteria for regulatory decisions.

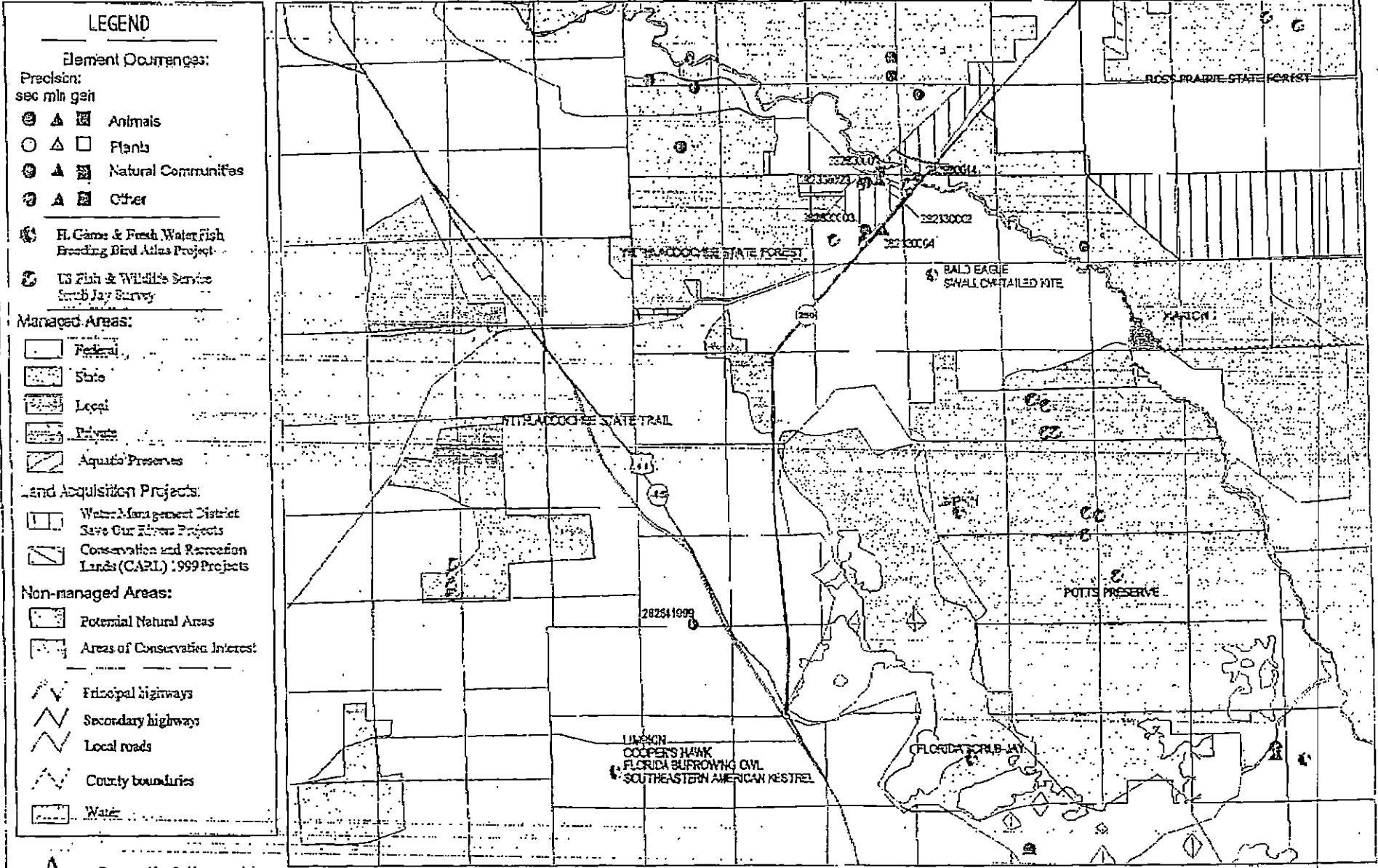
We appreciate the opportunity to provide comments on the proposed AN, and request that a copy of the EA be circulated to the state clearinghouse for review when complete. Please feel free to call me at 487-2231 if you have any questions regarding our comments.

Sincerely,

Susan Goggin  
Office of Intergovernmental Programs

Attach.

State Route 200, from Citrus and Marion County border line to Hernando City



Prepared by S. Kupenevich  
13 September 2000  
Data Source: FNAI 3/00



NOTE: Map should not be interpreted without accompanying documents.

FINAL ELEMENT OCCURRENCE RECORDS ON OR NEAR SITE

| GIS ID   | SCIENTIFIC NAME                  | COMMON NAME                   | GLOBAL RANK | STATE RANK | FEDERAL STATUS | STATE STATUS | DATE OBSERVED | DESCRIPTION   | COMMENTS   |
|----------|----------------------------------|-------------------------------|-------------|------------|----------------|--------------|---------------|---|--|
| 282E0001 | APHELOCOENA COERULESCENS         | FLORIDA SCRUB JAY             | G3          | S3         | LT             | LT           | 1981-03-05    | SECOND-GROWTH OAK SCRUB   | 1981-03-05: 2 SCRUB JAYS   |
| 282E0002 | SCRUB                            |                               | G2          | S2         | N              | N            | 1981-03-05    | SECOND-GROWTH OAK SCRUB   | OCCURRENCE AT SITE   |
| 282E0003 | APHELOCOENA COERULESCENS         | FLORIDA SCRUB JAY             | G3          | S3         | LT             | LT           | 1981-03-05    | OAK SCRUB   | 1981-03-05: 1 SCRUB JAY  |
| 282E0004 | SCRUB                            |                               | G2          | S2         | N              | N            | 1981-03-05    | OAK SCRUB   | OCCURRENCE AT SITE   |
| 282E0014 | PSEIDEMY'S COHOINNA SUWANNEENSIS | SUWANNEE COOTER               | G5T3        | S3         | N              | LS           | 1994-05-12    | MEDIUM-SIZED RIVER WITH BLACKWATER AND SPRING-FED CHARACTERISTICS; BORDERED BY NARROW FLOODPLAIN SWAMP FOREST AND UPLAND MIXED FOREST; AQUATIC VEGETATION INCLUDES HYDROCOYLE, SCIRUS, TYPHA, PISTIA, NYMPHEA   | 1994-05-12: SEVERAL BASKING INDIVIDUALS OBSERVED, MOSTLY SUB-ADULT, DURING MORNING CANOE SURVEY (PND, HCO, ILLUS). SEVERAL ADULTS COLLECTED IN AUG. 1973 AND MARCH 1975 BY K. AINSIE, H. CONVERSE (SPECIMENS TO UF/FSM ZOOARCHAEOLOGY; ADDITIONAL SPECIMEN IN US |
| 282E0023 | SCIRUS NIGER SHERMANI            | SHERMAN'S FOX SQUIRREL        | G5T2        | S2         | N              | LS           | 1994-05-12    | Principal habitat on ranch is scrub that has been disturbed by cattle ranching activities; pasture grasses have encroached into groundcover; Turkey oaks are large, knotholes are abundant though mostly small, wiregrass is widespread though sparse. Suis | 1994-05-11, 12: During 2-day field assessment of Jordan Ranch, Jackson and Pailisa observed one adult.   |
| 282E1399 | FALCO SPURVERIUS PALLUS          | SOUTHEASTERN AMERICAN KESTREL | G5T3T4      | S3T        | N              | LT           | 1990-05-24    | NO GENERAL DESCRIPTION GIVEN  | 1990-05-24: 1 nest cavity with young reported by David V. Siga (J.A. Hoy's, GFC)   |

8/13/00

1

# FLORIDA NATURAL AREAS INVENTORY

1018 Thomasville Road, Suite 200-C, Tallahassee, FL 32303 (850) 224-8207

April, 1998

Page 1

## Citrus County Summary Rare Species and Natural Communities

| Occurrence        | Scientific Name                             | Common Name                     | Global Rank* | State Rank* | Federal Status* | State Status* | Status |
|-------------------|---|---------------------------------|--------------|-------------|-----------------|---------------|--------|
| <b>AMPHIBIANS</b> |   |                                 |              |             |                 |               |        |
|                   | <i>Notophthalmus perstriatus</i>            | striped newt                    | G2G3         | S2S3        | N               | N             | P      |
|                   | <i>Pseudobranchius striatus lustricolus</i> | Gulf Hammock dwarf siren        | G5T1         | S1          | N               | N             | P      |
|                   | <i>Rana capito</i>                          | gopher frog                     | G4           | S3          | N               | LS            | C      |
| <b>REPTILES</b>   |   |                                 |              |             |                 |               |        |
|                   | <i>Alligator mississippiensis</i>           | American alligator              | G5           | S4          | T(S/A)          | LS            | C      |
|                   | <i>Caretta caretta</i>                      | loggerhead                      | G3           | S3          | LT              | LT            | C      |
|                   | <i>Chelonia mydas</i>                       | green turtle                    | G3           | S2          | LE              | LE            | C      |
|                   | <i>Crotalus adamanteus</i>                  | eastern diamondback rattlesnake | G5           | S3          | N               | N             | C      |
|                   | <i>Dermochelys coriacea</i>                 | leatherback                     | G3           | S2          | LE              | LE            | C      |
|                   | <i>Drymarchon corais couperi</i>            | eastern indigo snake            | G4T3         | S3          | LT              | LT            | C      |
|                   | <i>Erymnochelys imbricata</i>               | hawkbill                        | G3           | S1          | LE              | LE            | C      |
|                   | <i>Gopherus polyphemus</i>                  | gopher tortoise                 | G3           | S3          | N               | LS            | C      |
|                   | <i>Lepidochelys kempii</i>                  | Kemp's ridley                   | G1           | S1          | LE              | LE            | P      |
|                   | <i>Nerodia clarkii clarkii</i>              | Gulf salt marsh snake           | G4T3         | S3?         | N               | N             | P      |
|                   | <i>Pituophis melanoleucus mugilus</i>       | Florida pine snake              | G5T3?        | S3          | N               | LS            | C      |
|                   | <i>Pseudemys concinna suwanneensis</i>      | Suwannee cooter                 | G5T3         | S3          | N               | LS            | C      |
|                   | <i>Stolesema extenuatum</i>                 | short-tailed snake              | G3           | S3          | N               | LT            | C      |
| <b>BIRDS</b>      |   |                                 |              |             |                 |               |        |
|                   | <i>Accipiter cooperii</i>                   | Cooper's hawk                   | G4           | S3?         | N               | N             | P      |
|                   | <i>Aimophila nestivatoris</i>               | Bachman's sparrow               | G3           | S3          | N               | N             | P      |
|                   | <i>Ajaja ajaja</i>                          | roseate spoonbill               | G5           | S2S3        | N               | LS            | P      |
|                   | <i>Ammodramus maritimus peninsulae</i>      | Scott's seaside sparrow         | G4T2         | S2          | N               | LS            | C      |
|                   | <i>Aphelocoma coerulescens</i>              | Florida parula-jay              | G3           | S3          | LT              | LT            | C      |
|                   | <i>Aramus guarouba</i>                      | limpkin                         | G5           | S3          | N               | LS            | P      |
|                   | <i>Ardea alba</i>                           | great egret                     | G5           | S4          | N               | N             | C      |
|                   | <i>Buteo brachyurus</i>                     | short-tailed hawk               | G4?          | S3          | N               | N             | P      |
|                   | <i>Charadrius melodus</i>                   | piping plover                   | G3           | S2          | LT              | LT            | P      |
|                   | <i>Cistothorus palustris marianae</i>       | Marian sparrow wren             | G5T3         | S3?         | N               | LS            | C      |
|                   | <i>Dendroica discolor paludicola</i>        | Florida prairie warbler         | G5T3         | S3          | N               | N             | P      |
|                   | <i>Egretta caerulea</i>                     | little blue heron               | G5           | S4          | N               | LS            | C      |
|                   | <i>Egretta thula</i>                        | snowy egret                     | G5           | S4          | N               | LS            | C      |
|                   | <i>Egretta tricolor</i>                     | tricolored heron                | G5           | S4          | N               | LS            | C      |
|                   | <i>Elanoides forficatus</i>                 | swallow-tailed kite             | G4           | S2S3        | N               | N             | C      |
|                   | <i>Eudocimus albus</i>                      | white ibis                      | G5           | S4          | N               | LS            | C      |
|                   | <i>Falco columbarius</i>                    | merlin                          | G5           | SU          | N               | N             | P      |
|                   | <i>Falco peregrinus</i>                     | peregrine falcon                | G4           | S2          | LE              | LE            | C      |
|                   | <i>Falco sparverius paulus</i>              | southeastern American kestrel   | G5T3T4       | S3?         | N               | LT            | C      |
|                   | <i>Fregata magnificens</i>                  | magnificent frigatebird         | G5           | S1          | N               | N             | C      |
|                   | <i>Grus canadensis pratensis</i>            | Florida sandhill crane          | G5T2T3       | S2S3        | N               | LT            | P      |
|                   | <i>Haematopus palliatus</i>                 | American oystercatcher          | G5           | S3          | N               | LS            | C      |
|                   | <i>Haliaeetus leucocephalus</i>             | bald eagle                      | G4           | S3          | LT              | LT            | C      |
|                   | <i>Icthyophaga exilis</i>                   | least tern                      | G5           | S4          | N               | N             | P      |
|                   | <i>Lateolanius jamaicensis</i>              | black rail                      | G4           | S3?         | N               | N             | P      |

**FLORIDA NATURAL AREAS INVENTORY**  
 1018 Thomasville Road, Suite 200-C, Tallahassee, FL 32303 (850) 224-8207

April, 1998  
 Page 2

**Citrus County Summary**  
 Rare Species and Natural Communities

| Occurrence                             | Common Name                       | Global Rank* | State Rank* | Federal Status* | State Status* | Status† |
|--|-----------------------------------|--------------|-------------|-----------------|---------------|---------|
| <i>Mycteria americana</i>              | wood stork                        | G4           | S2          | LE              | LE            | C       |
| <i>Nyctanassa violacea</i>             | yellow crowned night-heron        | G5           | S3?         | N               | N             | C       |
| <i>Nycticorax nycticorax</i>           | black-crowned night-heron         | G5           | S3?         | N               | N             | C       |
| <i>Pandion haliaetus</i>               | osprey                            | G5           | S3S4        | N               | LS**          | C       |
| <i>Pelecanus occidentalis</i>          | brown pelican                     | G4           | S3          | N               | LS            | C       |
| <i>Picoides borealis</i>               | red-cockaded woodpecker           | G3           | S2          | LE              | LT            | C       |
| <i>Picoides villosus</i>               | hairy woodpecker                  | G5           | S3?         | N               | N             | P       |
| <i>Plegadis falcinellus</i>            | glossy ibis                       | G5           | S2          | N               | N             | P       |
| <i>Rallus longirostris scottii</i>     | Florida clapper rail              | G5T3?        | S3?         | N               | N             | P       |
| <i>Rynchops niger</i>                  | black skimmer                     | G5           | S3          | N               | LS            | C       |
| <i>Sporophila cucularia floridana</i>  | Florida bluewing owl              | G4T3         | S3          | N               | LS            | C       |
| <i>Sterna antillarum</i>               | least tern                        | G4           | S3          | N               | LT            | C       |
| <i>Sterna caspia</i>                   | Caspian tern                      | G5           | S2?         | N               | N             | P       |
| <i>Sterna maxima</i>                   | royal tern                        | G5           | S3          | N               | N             | C       |
| <i>Sterna sandvicensis</i>             | sandwich tern                     | G5           | S2          | N               | N             | C       |
| <b>MAMMALS</b>                         |                                   |              |             |                 |               |         |
| <i>Corynorhinus rafinesquii</i>        | Rafinesque's big-eared bat        | G3           | S3?         | N               | N             | P       |
| <i>Felis concolor coryi</i>            | Florida panther                   | G5T1         | S1          | LE              | LE            | P       |
| <i>Mustela frenata peninsularis</i>    | Florida long-tailed weasel        | G5T3         | S3?         | N               | N             | P       |
| <i>Mustela vison halimmetes</i>        | Gulf salt marsh mink              | G5T3         | S3          | N               | N             | C       |
| <i>Myotis austroriparius</i>           | southeastern bat                  | G3           | S3          | N               | N             | C       |
| <i>Podomys floridanus</i>              | Florida mouse                     | G3           | S3          | N               | LS            | C       |
| <i>Sciurus niger shermani</i>          | Sherman's fox squirrel            | G5T2         | S2          | N               | LS            | C       |
| <i>Sorex longirostris longirostris</i> | southeastern shrew                | G5T5         | S4          | N               | N             | P       |
| <i>Trichechus manatus</i>              | manatee                           | G2?          | S2?         | LE              | LE            | C       |
| <i>Ursus americanus floridanus</i>     | Florida black bear                | G5T2         | S2          | C               | LT**          | C       |
| <b>INVERTEBRATES</b>                   |                                   |              |             |                 |               |         |
| <i>Cincinnatia helicogyra</i>          | helicooid spring snail            | G1           | S1          | N               | N             | C       |
| <i>Crangonyx hobbsi</i>                | Hobbs' eye amphipod               | G2,G3        | S2S3        | N               | N             | C       |
| <i>Procambarus lucifugus</i>           | light-flesing eye crayfish        | G2,G3        | S2S3        | N               | N             | C       |
| <i>Troglocambarus maclanei</i>         | north Florida spider eye crayfish | G2           | S2          | N               | N             | C       |
| <b>VASCULAR PLANTS</b>                 |                                   |              |             |                 |               |         |
| <i>Adiantum tenerum</i>                | brittle maidenhair fern           | G5           | S3          | N               | LE            | C       |
| <i>Agrimonia incisa</i>                | incised groove-hair               | G3           | S2          | N               | N             | C       |
| <i>Anemone berlandieri</i>             | Texas anemone                     | G4?          | S2          | N               | N             | C       |
| <i>Asplenium auritum</i>               | auricled spleenwort               | G5           | S2          | N               | LE            | C       |
| <i>Asplenium pinnatum</i>              | dwarf spleenwort                  | G4,G5        | S1          | N               | LE            | C       |
| <i>Asplenium x curtissii</i>           | Curtiss' spleenwort               | G1           | S1          | N               | N             | C       |
| <i>Asplenium x heteroresiliens</i>     | Wagner's spleenwort               | HYB          | S1S2        | N               | N             | C       |
| <i>Asplenium x plenum</i>              | hybrid spleenwort                 | HYB          | S1          | N               | N             | C       |
| <i>Blechnum occidentale</i>            | sinkhole fern                     | G5           | S1          | N               | LE            | C       |
| <i>Centrosema arenicola</i>            | sand butterfly pea                | G2           | S2          | N               | N             | C       |

# FLORIDA NATURAL AREAS INVENTORY

1018 Thomasville Road, Suite 200-C, Tallahassee, FL 32303

(850) 224-5207

April, 1998

Page 3

## Citrus County Summary Rare Species and Natural Communities

| Occurrence<br>Scientific Name   | Common Name                | Global<br>Rank* | State<br>Rank* | Federal<br>Status* | State<br>Status* | Status† |
|---------------------------------|----------------------------|-----------------|----------------|--------------------|------------------|---------|
| <i>Chellanthus microphylla</i>  | southern lip fern          | G5              | S3             | N                  | LE               | C       |
| <i>Chionanthus pygmaeus</i>     | pigmy fringe tree          | G3              | S3             | LE                 | LE               | C       |
| <i>Glandularia tamperensis</i>  | Tampa vervain              | G1              | S1             | N                  | LE               | C       |
| <i>Gymnopogon chapmanianus</i>  | Chapman's skeletongrass    | G2              | S2             | N                  | N                | C       |
| <i>Lechen cernua</i>            | nodding pinweed            | G3              | S3             | N                  | LT               | R       |
| <i>Matelea floridana</i>        | Florida spiny pod          | G2              | S2             | N                  | LE               | C       |
| <i>Monoitopsis reynoldsiae</i>  | pigmy piglet               | G1Q             | S1             | N                  | LE               | C       |
| <i>Nymphaea jamesoniana</i>     | sleeping beauty waterlily  | G5              | S2S3           | N                  | N                | C       |
| <i>Pavonia spinifex</i>         | yellow hillcress           | G4G5            | S2S3           | N                  | N                | C       |
| <i>Peperomia humilis</i>        | terrestrial peperomia      | G5              | S2             | N                  | LE               | C       |
| <i>Persea humilis</i>           | scrub bay                  | G3              | S3             | N                  | N                | C       |
| <i>Physostegia leptophylla</i>  | slender-leaved dragon-head | G47             | S3S4           | N                  | N                | C       |
| <i>Pteroglossaspis cristata</i> | wild coco                  | G2G3            | S2             | N                  | LT               | C       |
| <i>Spiranthes polyantha</i>     | green Indian tresses       | G3G5            | S1S2           | N                  | N                | C       |
| <i>Stylisma abalta</i>          | scrub stylisma             | G2G3            | S2S3           | N                  | LE               | C       |
| <i>Thelypteris reptans</i>      | creeping fern              | G5              | S2             | N                  | LE               | C       |
| <i>Trichomanes punctatum</i>    | Florida bristle fern       | G4G5            | S2             | N                  | LE               | C       |
| <i>Triphora craighadli</i>      | Craighadli's nodding-ears  | G1              | S1             | N                  | LE               | C       |
| <i>Ulmus crassifolia</i>        | cedar elm                  | G5              | S1             | N                  | N                | C       |
| <b>NATURAL COMMUNITIES</b>      |                            |                 |                |                    |                  |         |
| Aquatic Cave                    |                            | G3              | S2             | N                  | N                | C       |
| Basin Marsh                     |                            | G7              | S47            | N                  | N                | C       |
| Basin Swamp                     |                            | G47             | S3             | N                  | N                | C       |
| Depression Marsh                |                            | G47             | S3             | N                  | N                | C       |
| Floodplain Swamp                |                            | G7              | S47            | N                  | N                | C       |
| Hydric Hammock                  |                            | G7              | S47            | N                  | N                | C       |
| Marine Tidal Marsh              |                            | G4              | S4             | N                  | N                | C       |
| Marine Tidal Swamp              |                            | G3              | S3             | N                  | N                | C       |
| Maritime Hammock                |                            | G4              | S2             | N                  | N                | C       |
| Sandhill Upland Lake            |                            | G3              | S2             | N                  | N                | C       |
| Sandhill                        |                            | G2G3            | S2             | N                  | N                | C       |
| Scrub                           |                            | G2              | S2             | N                  | N                | C       |
| Shell Mound                     |                            | G3              | S2             | N                  | N                | C       |
| Sinkhole                        |                            | G7              | S2             | N                  | N                | C       |
| Terrestrial Cave                |                            | G3              | S1             | N                  | N                | C       |
| Upland Hardwood Forest          |                            | G7              | S3             | N                  | N                | C       |
| Upland Mixed Forest             |                            | G7              | S4             | N                  | N                | C       |
| Xeric Hammock                   |                            | G7              | S3             | N                  | N                | C       |
| <b>OTHER</b>                    |                            |                 |                |                    |                  |         |
| Bird rookery                    |                            |                 |                | N                  | N                | C       |
| Geological feature              |                            |                 |                | N                  | N                | C       |
| Manatee aggregation site        |                            |                 |                | N                  | N                | C       |

\* See attached *FNAI Rank Explanations* sheet for definitions of *Global* and *State Ranks*, and *State and Federal Status*

\*\* See attached *FNAI Rank Explanations* sheet, *Special Animal Listings - State and Federal Status* section

† **COUNTY OCCURRENCE STATUS**

Vertebrates and Invertebrates:

C = (Confirmed) Occurrence status derived from a documented record in the FNAI data base.

P = (Potential) Occurrence status derived from a reported occurrence for the county, or the occurrence lies within the published range of the taxon.

N = (Nesting) For sea turtles only; occurrence status derived from documented nesting occurrences.

Plants, Natural Communities, and Other:

C = (Confirmed) Occurrence status derived from a documented record in the FNAI data base or from a herbarium specimen.

R = (Reported) Occurrence status derived from published reports.

# FLORIDA FISH AND WILDLIFE CONSERVATION COMMISSION



JAMES L. "JAMIE" ADAMS, JR.  
Bushnell

BARBARA C. BARSH  
Jacksonville

QUINTON L. HEDGEPEETH, DDS  
Miami

H.A. "HERKY" HUFFMAN  
Deltona

DAVID K. MEEHAN  
St. Petersburg

JULIE K. MORRIS  
Sarasota

TONY MOSS  
Miami

EDWIN P. ROBERTS, DC  
Pensacola

JOHN D. ROOD  
Jacksonville

ALLAN L. EGBERT, Ph.D., Executive Director  
VICTOR J. HELLER, Assistant Executive Director

OFFICE OF ENVIRONMENTAL SERVICE  
BRADLEY J. HARTMAN, DIRECTOR  
(850)488-6661 TDD (850)488-9542  
FAX (850)922-5675

October 18, 2000

**RECEIVED**  
OCT 20 2000

Ms. Cherie Trainor  
Department of Community Affairs  
2555 Shumard Oak Boulevard  
Tallahassee, Florida 32399-2100

State of Florida Clearinghouse

Re: SAI #200009010626C, SR-200  
PD&E Study Reevaluation, FDOT,  
Citrus and Marion Counties

Dear Ms. Trainor:

The Office of Environmental Services of the Florida Fish and Wildlife Conservation Commission (FWC) has reviewed the above referenced project in terms of impacts to fish and wildlife resources, and offers the following comments.

The Florida Department of Transportation (FDOT) proposes to widen SR-200 to four lanes for a total of 6.7 miles from just north of U.S. 41 in Citrus County to a point just north of the Withlacoochee River floodplain in Marion County. This current request for comments represents a reevaluation of a previous PD&E study which was completed in 1996. The applicant states that to minimize impacts, the southern one mile of the project area will be constructed within the existing right-of-way (ROW). However, 100 feet of new ROW will be taken from the western side of SR-200 from East Park Drive to just north of CR-491, where the need for additional ROW transitions to the east side of the roadway. This project is part of a regional improvement of SR-200 to four and six lanes north of the project area.

The project area adjacent to the roadway is predominantly rural with diverse plant community types which provide habitat for a wide array of fish and wildlife, including listed species. Scattered areas of commercial and medium density residential land uses also occur along the corridor. Habitat types along the roadway include xeric oak scrub, upland hardwood hammocks, pinelands, longleaf pine - turkey oak sandhills, and mixed hardwood pine forests. Vast areas of freshwater marsh are associated with Lake Tsala Apopka, while hardwood swamp

occurs along the Withlacoochee River floodplain. Significant areas of public lands managed by the Southwest Florida Water Management District, Division of Forestry, and the Department of Environmental Protection occur to the north and east.

Information from our GIS data base and other sources show that the Florida scrub jay (T), Florida pine snake (SSC), red-cockaded woodpecker (T), Sherman's fox squirrel (SSC), gopher tortoise (SSC), southeastern American kestrel (T), and many wading birds including the little blue heron (SSC), tri-colored heron (SSC), and limpkin (SSC) occur in the project area. Improvements on this roadway will result in the loss of sensitive habitat and potential impacts to listed species. Increased traffic and vehicle speeds will increase roadkills and further fragment this large complex interconnected habitat system composed of Lake Tsala Apopka, the Withlacoochee River and floodplain, and state lands consisting of the Cross Florida Greenway and adjoining public properties. We have sent the applicant GIS maps from our agency's wildlife and habitat database which depict Priority Wetlands for Wetland Dependent Species, Biodiversity Hotspots, public lands, listed species occurrences, and Strategic Habitat Conservation Areas, and show potential areas of conflict within the project area.

We recommend that the following items be considered in the reevaluation of the original PD&E study, so that the project is properly designed to avoid, minimize, or mitigate impacts to important fish and wildlife resources, including listed species:

1. The study should include a complete accounting by acres of all upland and wetland habitats impacted as a result of the project, and a compensatory mitigation plan should be formulated for habitat replacement.
2. The study should include field surveys for the gopher tortoise and all species listed by our agency as endangered, threatened, or species of special concern. The mitigation plan should also include measures to avoid, minimize, or mitigate those impacts.
3. The issue of habitat connectivity should be addressed by the study, and the roadway design should include a longer bridge over the Withlacoochee River and floodplain and/or an upland underpass in this area.
4. Drainage retention areas, borrow sites, and equipment staging areas should be sited to avoid or minimize impacts to listed species and their habitats.

Our agency has been involved with wildlife issues associated with planned improvements on the entire SR-200 corridor since the early 1990s. We are hopeful that successful coordination will occur between Districts 7 and 1, whereby both the southern and northern sections of SR-200

Ms. Cherie Trainor  
October 18, 2000  
Page 3

are designed to protect significant wildlife resources, and preserve future land management options in an area where the state has made a substantial financial investment in public lands for the support of wildlife and recreation.

Sincerely,

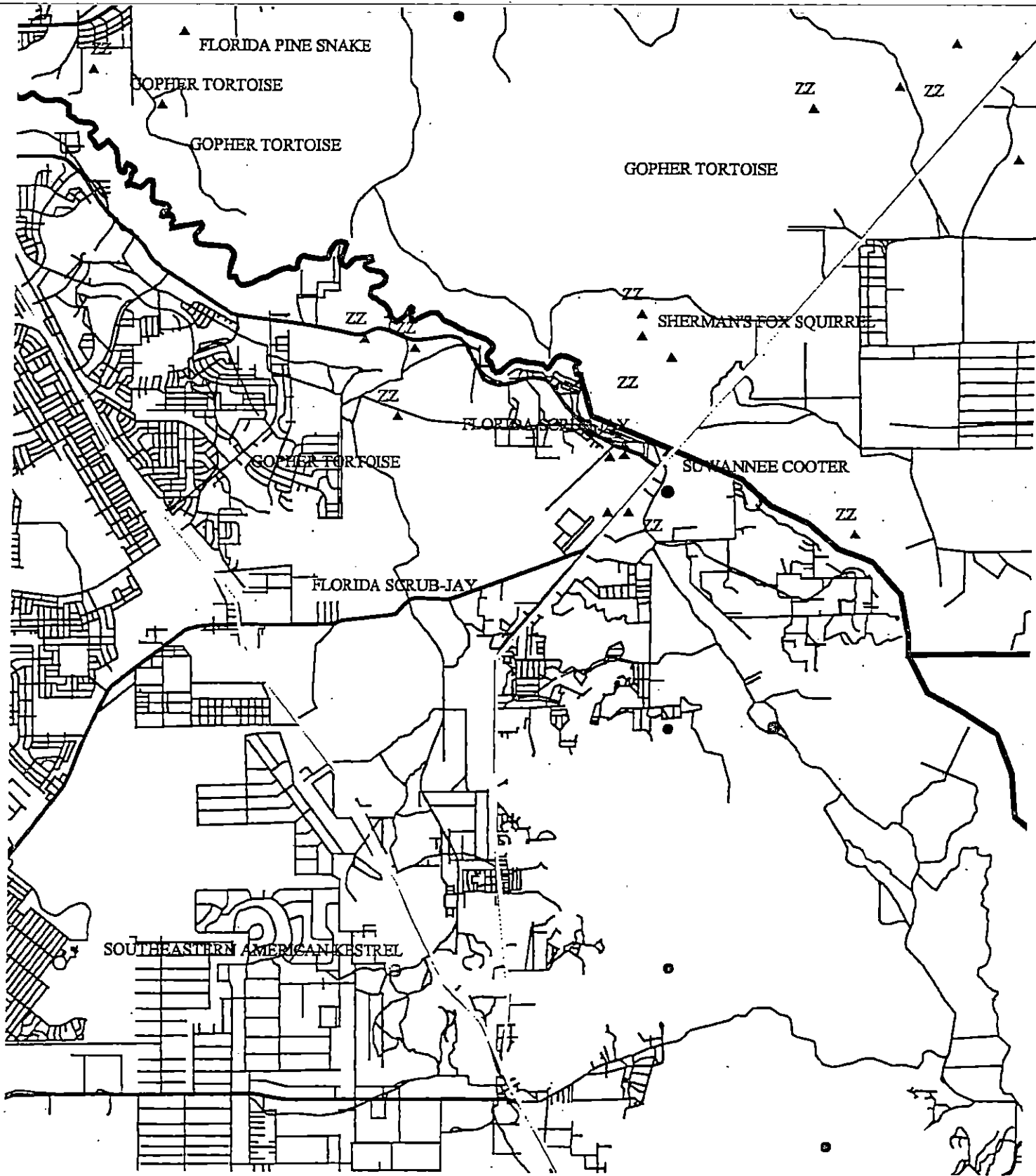
  
Bradley J. Hartman, Director  
Office of Environmental Services

BJH/TG  
ENV 1-3-2  
SR200#2

cc: Ms. Debbie Parrish - DEP, Office of Greenways and Trails, Tallahassee  
Ms. Deborah Wolfe - Federal Highway, Tallahassee  
Mr. Jeraldo Commellas Jr. -FDOT Environmental Management Office, Tampa

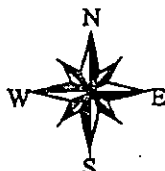
# S.R. 2000 PD&E Study Reevaluation Citrus and Marion Counties

Listed Species



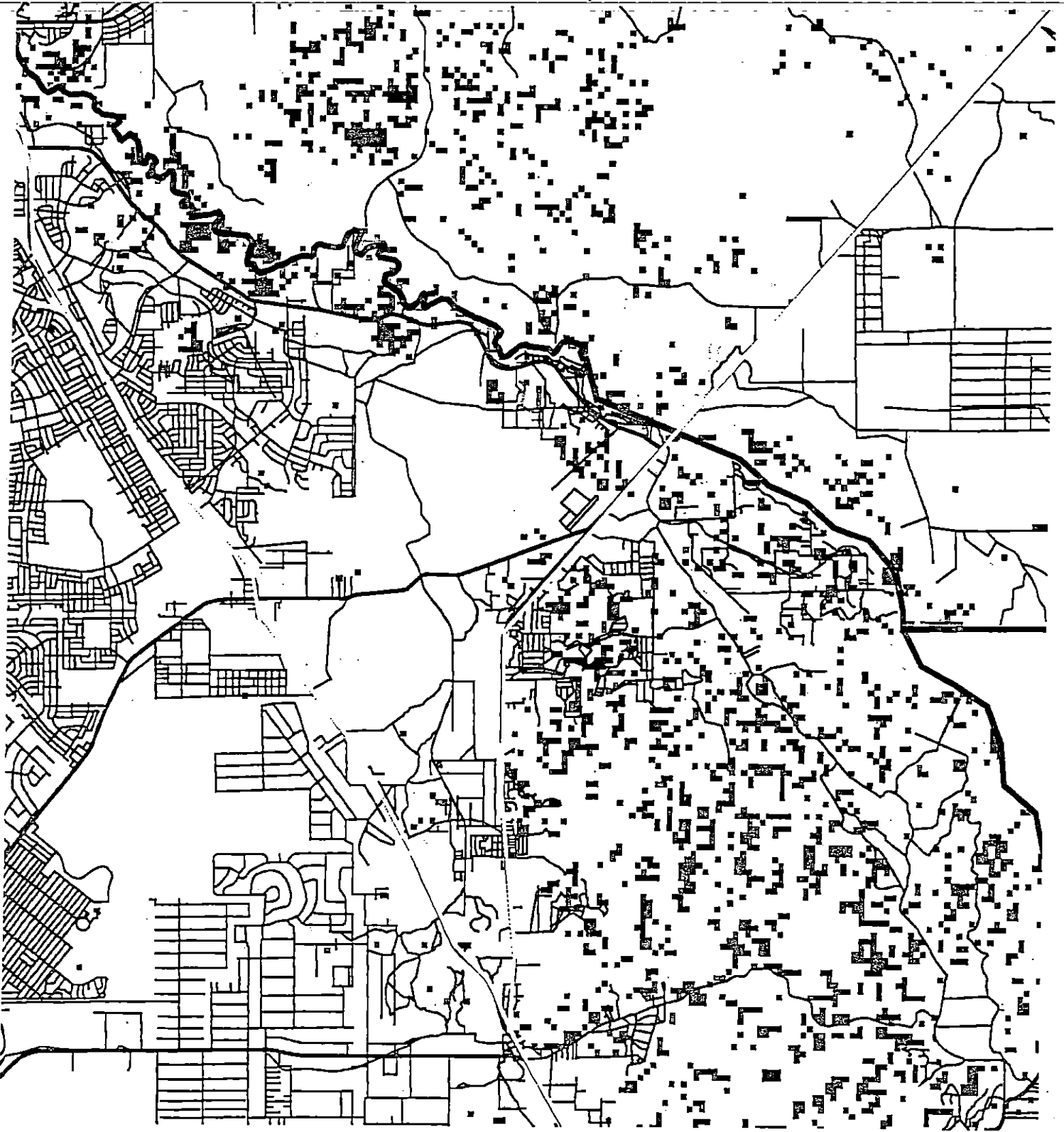
## Legend

- State Road
- Road
- ⊕ American Kestrel
- Scrub-jay
- ⊕ Railway Site
- ▲ Listed Species (PMAA)



# S.R. 2000 PD&E Study Reevaluation Citrus and Marion Counties

Priority Wetlands



## Legend

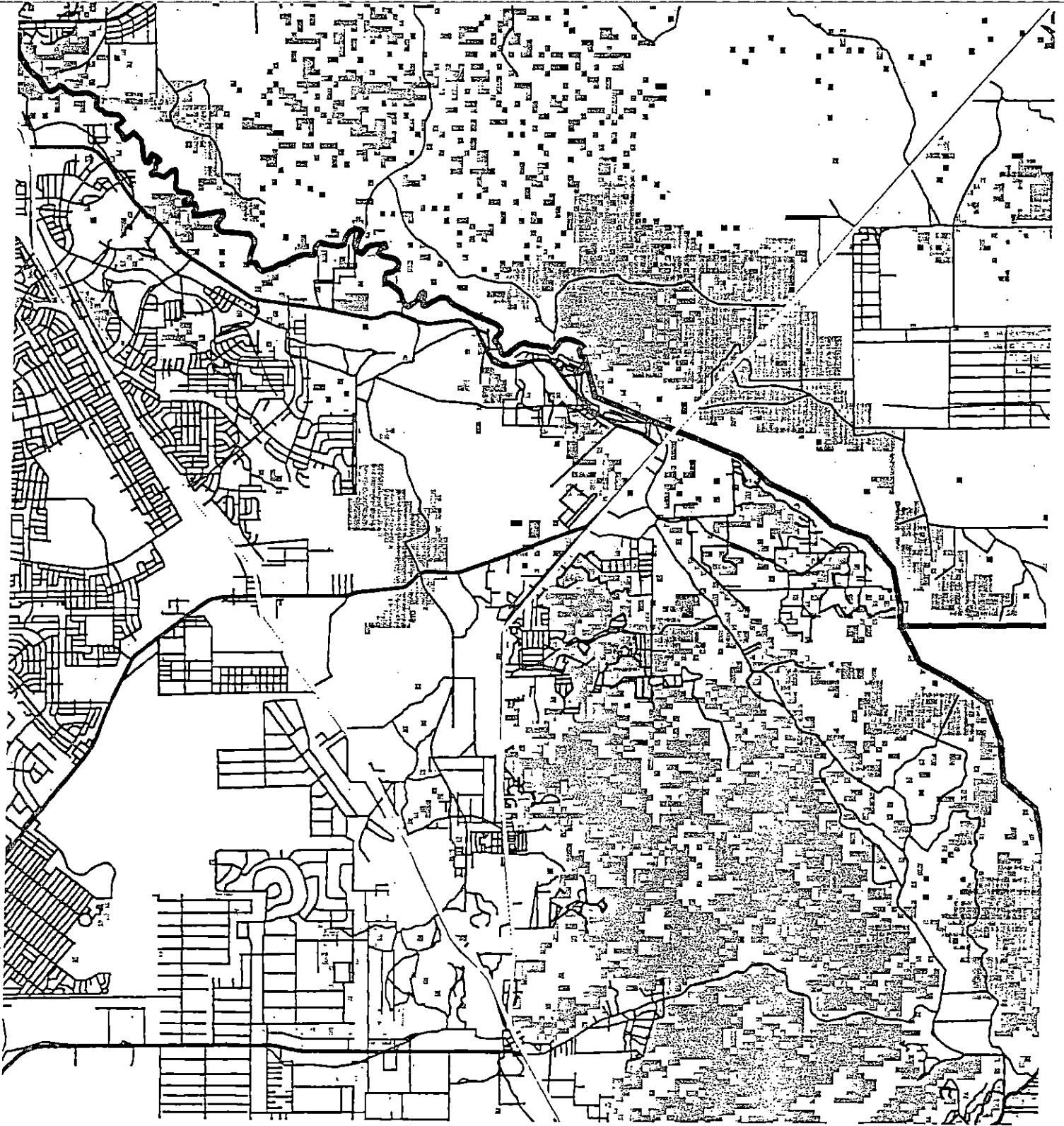
- Background
- 1 - 3 Upland Species
- 4 - 6 Upland Species
- 7 - 9 Wetland Species
- 10 - 12 Wetland Species




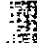
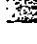

0.25 0 0.25 0.5 Miles

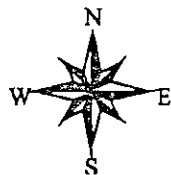
# S.R. 2000 PD&E Study Reevaluation Citrus and Marion Counties

Biodiversity Hotspot



## Legend

-  background
-  3 - 4 Species
-  5 - 6 Species
-  7+ Species

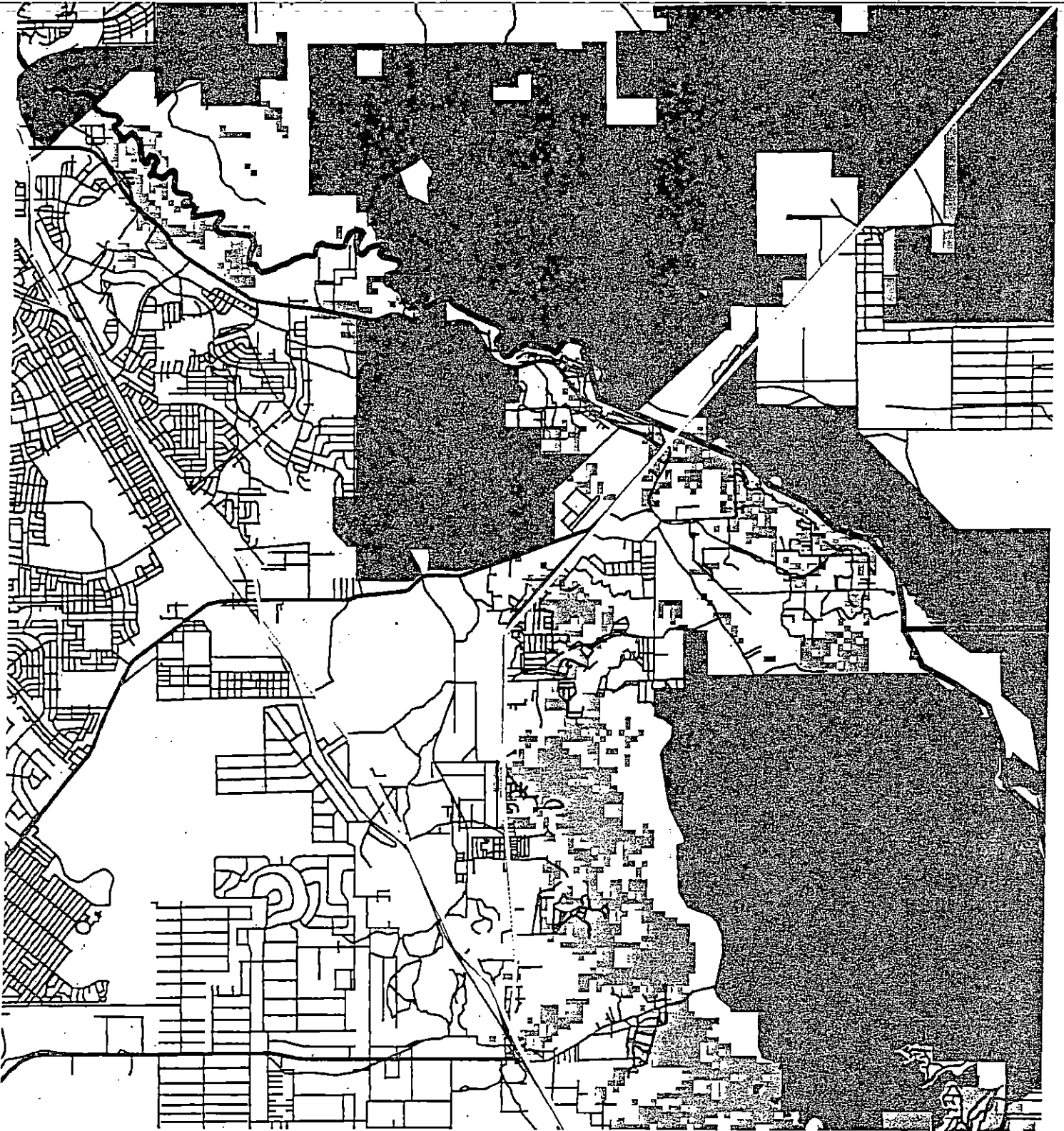


0.25 0 0.25 0.5 Miles



# S.R. 2000 PD&E Study Reevaluation Citrus and Marion Counties

Strategic Habitat Conservation Areas



## Legend

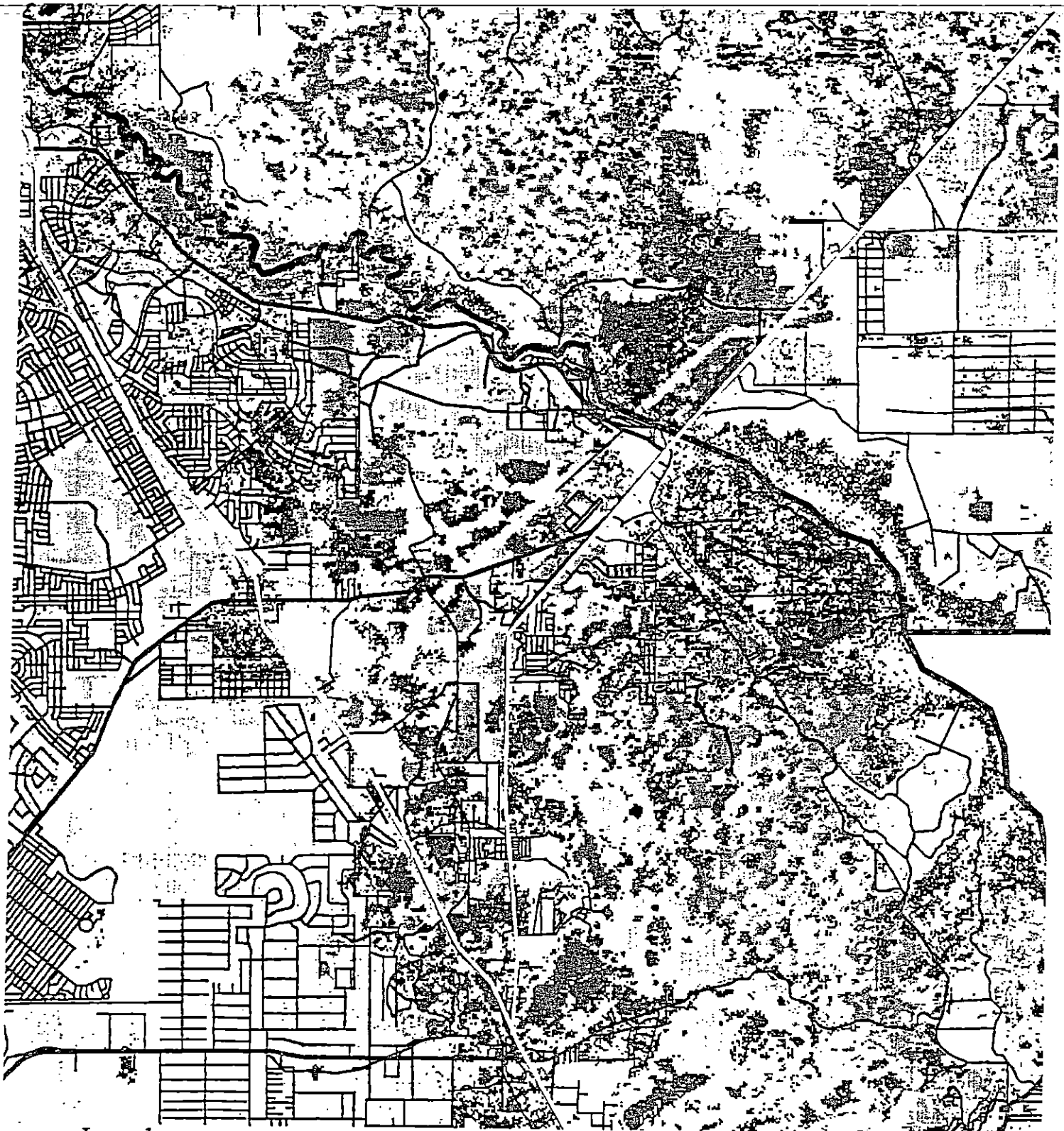
- Public Lands
- SHCA's
- Project Area
- Roads



0.25 0 0.25 0.5 Miles

# S.R. 2000 PD&E Study Reevaluation Citrus and Marion Counties

Landcover



## Legend

- Coastal strand
- Dry prairie
- Pinelands
- Sand pine scrub
- Sandhill
- Xeric oak scrub
- Mixed hardwood-pine forests
- Hardwood hammocks and forests
- Tropical hardwood hammock
- Coastal salt marsh
- Freshwater marsh & wet prairie
- Cypress swamp
- Hardwood swamp
- Bay swamp
- Shrub swamp
- Mangrove swamp
- Bottomland hardwoods
- Open water
- Grassland (agriculture)
- Shrub and brushland
- Exotic plant community



COUNTY: State

DATE: 09/01/2000

COMMENTS DUE DATE: 10/02/2000

CLEARANCE DUE DATE: 10/16/2000

Message:

SAI#: FL200009010626C

STATE AGENCIES

WATER MANAGEMENT DISTRICTS

OPB POLICY UNITS

Agriculture  
 Community Affairs  
 Environmental Protection  
 Fish & Wildlife Conserv. Comm  
 X OTTED  
 State

Southwest Florida WMD  
 St. Johns River WMD

Environmental Policy/C & ED

**RECEIVED**  
 SEP 13 2000  
 State of Florida Clearinghouse

The attached document requires a Coastal Zone Management Act/Florida Coastal Management Program consistency evaluation and is categorized as one of the following:

- Federal Assistance to State or Local Government (15 CFR 930, Subpart F). Agencies are required to evaluate the consistency of the activity.
- Direct Federal Activity (15 CFR 930, Subpart C). Federal Agencies are required to furnish a consistency determination for the State's concurrence or objection.
- Outer Continental Shelf Exploration, Development or Production Activities (15 CFR 930, Subpart E). Operators are required to provide a consistency certification for state concurrence/objection.
- Federal Licensing or Permitting Activity (15 CFR 930, Subpart D). Such projects will only be evaluated for consistency when there is not an analogous state license or permit.

Project Description:

U.S. Department of Transportation - Highway Planning and Construction - Advance Notification - S.R. 200 PD&E Study Re-evaluation - WPI Segment No.: 257188 1 - FAP No.: FL62-020R - Citrus and Marion Counties, Florida.

To: Florida State Clearinghouse  
 Department of Community Affairs  
 2555 Shumard Oak Boulevard  
 Tallahassee, FL 32399-2100  
 (850) 922-5438 (SC 292-5438)  
 (850) 414-0479 (FAX)

EO. 12372/NEPA

Federal Consistency

- No Comment
- Comments Attached
- Not Applicable

- No Comment/~~Consistent~~
- Consistent/Comments Attached
- Inconsistent/Comments Attached
- Not Applicable

From:

Division/Bureau: EOG / OTTED

Reviewer: M. Blakely

Date: Sept 7, 2000

COUNTY: State

*Rec'd 9/7/00*

DATE: 09/01/2000  
COMMENTS DUE DATE: 10/02/2000  
CLEARANCE DUE DATE: 10/16/2000

Message:

SAI#: FL200009010626G

STATE AGENCIES

WATER MANAGEMENT DISTRICTS

OPB POLICY UNITS

Agriculture  
Community Affairs  
Environmental Protection  
Fish & Wildlife Conserv. Comm  
OTTED  
State

Southwest Florida WMD  
X St. Johns River WMD

Environmental Policy/C & ED  
*RECEIVED*  
*SEP 13 2000*  
*State of Florida Clearinghouse*

The attached document requires a Coastal Zone Management Act/Florida Coastal Management Program consistency evaluation and is categorized as one of the following:

- Federal Assistance to State or Local Government (15 CFR 930, Subpart F). Agencies are required to evaluate the consistency of the activity.
- Direct Federal Activity (15 CFR 930, Subpart C). Federal Agencies are required to furnish a consistency determination for the State's concurrence or objection.
- Outer Continental Shelf Exploration, Development or Production Activities (15 CFR 930, Subpart E). Operators are required to provide a consistency certification for state concurrence/objection.
- Federal Licensing or Permitting Activity (15 CFR 930, Subpart D). Such projects will only be evaluated for consistency when there is not an analogous state license or permit.

Project Description:

U.S. Department of Transportation - Highway Planning and Construction - Advance Notification - S.R. 200 PD&E Study Re-evaluation - WPI Segment No.: 257188 1 - FAP No.: FL62-020R - Citrus and Marion Counties, Florida.

To: Florida State Clearinghouse  
Department of Community Affairs  
2555 Shumard Oak Boulevard  
Tallahassee, FL 32399-2100  
(850) 922-5438 (SC 292-5438)  
(850) 414-0479 (FAX)

EG. 12372/NEPA

Federal Consistency

- No Comment
- Comments Attached
- Not Applicable

- No Comment/Consistent
- Consistent/Comments Attached
- Inconsistent/Comments Attached
- Not Applicable

From: NOT IN SURWMD  
Division/Bureau: SURWMD/OPP  
Reviewer: *[Signature]*  
Date: 9/8/00

ST. JOHNS RIVER WATER MGT DISTRICT  
SEP 7 2000

Ms. Cherie Trainor, Coordinator  
September 14, 2000  
Page 2.

- Goal 4.8:** Avoid adverse impacts to the natural functions of the region's wetlands or surface water systems from development and redevelopment.
- Policy 4.8.6:** Design new transportation and utility facilities to avoid interference within natural operation of wetlands, and in a sufficient size and height to accommodate the movement and migration of wildlife through the area.
- Policy 4.8.18:** Design new public and private roads so as not to impede the natural flow of water.
- Policy 4.9.2:** Design roads and bridges to incorporate design features that facilitate the free passage of wildlife so as to avoid vehicle and animal collisions.
- Goal 5.5:** Provide transportation facilities to ensure that the regionally significant roadways operate at acceptable levels of service.
- Policy 5.5.2:** Perform timely maintenance, expansion, and repair of roads and bridges to minimize costly reconstruction and to enhance safety.
- Goal 5.6:** Future transportation development that avoids loss and fragmentation of environmentally sensitive areas, and degradation of water resources.
- Policy 5.6.2:** Ensure that transportation improvements in coastal high-hazard areas and environmentally sensitive areas are made only after evaluating the interests of human transportation need versus the need to protect and preserve regionally significant resources.

We appreciate the opportunity to comment on this proposal.

Sincerely,



Vivian A. Whittier  
ICR Procedural Coordinator

/vaw

Enc.



2571881-18

STATE OF FLORIDA

DEPARTMENT OF COMMUNITY AFFAIRS

"Dedicated to making Florida a better place to call home"

STEVEN M. SEIBERT  
Secretary

RECEIVED ENVIRONMENTAL  
MANAGEMENT OFFICE  
GOVERNOR  
2000 NOV 27 AM 10:40

November 17, 2000

Mr. Jeraldo Comellas, Jr., P.E.  
Florida Department of Transportation  
District Environmental Management Engineer  
11201 North McKinley Drive, M.S. 7-500  
Tampa, Florida 33612-6456

RE: U.S. Department of Transportation - Highway Planning and Construction -  
Advance Notification - S.R. 200 PD&E Study Re-evaluation - WPI Segment No.:  
257188 1 - FAP No.: FL62-020R - Citrus and Marion Counties, Florida  
SAI # FL200009010626C

The enclosed comments provided by the Florida Department of State were inadvertently omitted from our prior correspondence of October 23, 2000. Please be advised that these comments do not change our finding that, at this stage, the advance notification for the above-referenced project is consistent with the Florida Coastal Management Program.

If you have any questions, please contact me at (850) 414-5495 or the address above.

Sincerely,

Cherie L. Trainor, Coordinator  
Florida State Clearinghouse

Enclosures

cc: Ms. Leigh A. Rosborough, Florida Department of State

2555 SHUMARD OAK BOULEVARD • TALLAHASSEE, FLORIDA 32399-2100  
Phone: 850.488.8466/Suncom 278.8466 FAX: 850.921.0781/Suncom 291.0781  
Internet address: <http://www.dca.state.fl.us>

CRITICAL STATE CONCERN FIELD OFFICE  
2796 Overseas Highway, Suite 212  
Marathon, FL 33050-2227  
(305) 289-2402

COMMUNITY PLANNING  
2555 Shumard Oak Boulevard  
Tallahassee, FL 32399-2100  
(850) 488-2356

EMERGENCY MANAGEMENT  
2555 Shumard Oak Boulevard  
Tallahassee, FL 32399-2100  
(850) 413-9969

HOUSING & COMMUNITY DEVELOPMENT  
2555 Shumard Oak Boulevard  
Tallahassee, FL 32399-2100  
(850) 488-7956



FLORIDA DEPARTMENT OF STATE  
Katherine Harris  
Secretary of State  
DIVISION OF HISTORICAL RESOURCES

November 8, 2000

Ms. Cherie Trainor  
State Clearinghouse  
Department of Community Affairs  
2555 Shumard Oak Boulevard  
Tallahassee, Florida 32399-2100

RE: DHR Project File No. 2000-07279  
SAI# FL200009010626C  
Florida Department of Transportation - Advance Notification  
SR 200 PD&E Study Re-evaluation  
WPI Segment No.: 2571881  
Financial Aid Project No.: FL62-020R  
Citrus and Marion County, Florida

Dear Ms. Trainor:

In accordance with the provisions of Florida's Coastal Zone Management Act and Chapter 267, *Florida Statutes*, as well as the procedures contained in 36 C.F.R., Part 800 ("Protection of Historic Properties"), we have reviewed the referenced project for possible impact to historic properties listed, or eligible for listing, in the *National Register of Historic Places*, or otherwise of historic or architectural value.

We have reviewed the Advance Notification for the Florida Department of Transportation (FDOT) project referenced above. We note that FDOT will have a cultural resource survey performed. We look forward to receiving and reviewing the resulting survey report, and to coordinating with the FDOT on this project. If the above conditions are met, the project will be consistent with the historic preservation aspects of Florida's Coastal Management Program.

If you have any questions concerning our comments, please contact Ms. Leigh A. Rosborough, Historic Sites Specialist, at 850-487-2333 or 800-847-7278. Your interest in protecting Florida's historic properties is appreciated.

Sincerely,

  
Janet Snyder Matthews, Ph.D., Director  
Division of Historical Resources  
State Historic Preservation Officer

JSM/Rlr

xc: Jasmin Raffington, FCMP-DCA

R.A. Gray Building • 500 South Bronough Street • Tallahassee, Florida 32399-0250 • <http://www.flheritage.com>

Director's Office (850) 488-1480 • FAX: 488-3355  
 Archaeological Research (850) 487-2299 • FAX: 414-2207  
 Historic Preservation (850) 487-2333 • FAX: 922-0496  
 Historical Museums (850) 488-1484 • FAX: 921-2503  
 Historic Pensacola Preservation Board (850) 595-5985 • FAX: 595-5989  
 Palm Beach Regional Office (561) 279-1475 • FAX: 279-1476  
 St. Augustine Regional Office (904) 825-5045 • FAX: 825-5044  
 Tampa Regional Office (813) 272-3843 • FAX: 272-2310

Mr. Tad Kasbeer  
August 31, 2000  
Page 2

commensals. Wetland function would be improved, completing connections between the Marjory Harris Carr Greenway, Ross Prairie State Forest and the Hálpata Tastanaki Preserve, and simultaneously spanning the 100-year floodplain, as previously recommended by the United States Fish and Wildlife Service. A bridge would also facilitate joint use of a common trail head and recreational facilities by the District and the Florida Department of Environmental Protection Office of Greenways and Trails.

2. The District holds title to several properties both upstream and downstream of State Road 200 along the Withlacoochee River, including the Hálpata Tastanaki Preserve and Two-Mile Prairie, as well as Potts Preserve, Flying Eagle, Carlton-Drake Gum Slough tract, and the Green Swamp. These acquisitions were made under the Save Our Rivers and Preservation 2000 programs, with the intent of protecting the Withlacoochee River corridor. The University of Florida GeoPlan Center has identified the State Road 200 and Withlacoochee River junction as a key location for a wildlife crossing. At present, the bridge span is not long enough to function as such, and should be extended at least 60-100 feet on either side - this should be determined at later date after consultation with wildlife experts including Florida Fish and Wildlife Conservation Commission staff and University of Florida personnel. The District will coordinate with FDOT District 7 during planning for the State Road 200 bridge spanning the Withlacoochee River. However, the above-referenced State Road 200 permit application, which addresses the span just north of the Withlacoochee River to State Road 484, should address this, and the design of the roadway should be consistent with and able to dovetail into an extended bridge design.
3. Since District-owned lands will be affected by this project, we would like to receive a copy of all documentation to the Federal Highway Administration (FHA), including documentation describing why the project did not require Section 4(f) review and/or the FHA's determination that the project did not qualify for 4(f) review. Dist 5
4. Wildlife surveys did not detect Florida scrub-jays that have been documented in the past along State Road 200, including birds that occur on District-owned land. There are seven to eight scrub-jays along the ROW, and these birds will be impacted by habitat take. Other wildlife and plant surveys are further suspect. We would like detailed information regarding surveys, including type of surveys conducted, time of year they were conducted, conditions during survey, transect information, etc. on lands now held by the District.

Mr. Tad Kasbeer  
August 31, 2000  
Page 3

Other issues may be identified following FDOT's responses to the District's Request for Additional Information. Please forward a copy of the permit application and all future correspondence to the District's Land Resources Department for review.

Thank you for your cooperation, and should you have any questions, please contact me at 800-423-1476, or Suncom 628-4150, extension 4465.

Sincerely,



Kevin W. Love  
Land Manager  
Land Resources Department

KWL:abp

cc: Fritz Musselmann  
Mary Barnwell  
Alex Collazos  
Stuart Trice

---

**APPENDIX B**

**Project Kickoff Letter**

The Honorable Steve Henning

Page 2

October 9, 2000

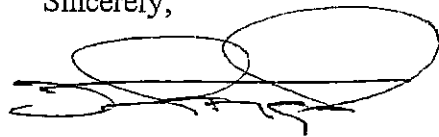
Once the Reevaluation is completed, the project may move forward to the Design, Right-of-Way Acquisition, and Construction phase provided funds are programmed for these subsequent phases.

It is important to obtain information regarding the concerns and issues on this project during this Reevaluation phase. The Department invites and encourages your input on this project. A comment form is enclosed for your convenience. Please submit your comments to the following address:

Kenneth A. Hartmann, P.E., District Seven Secretary  
Attn: Jeraldo Comellas, Jr. P.E., District EMO Engineer  
Florida Department of Transportation  
11201 N. McKinley Drive / M.S. 7-500  
Tampa, Florida 33612-6456

Further questions should be directed to Mark Clasgens, Project Manager, at (813) 975-6450 / (800) 226-7220.

Sincerely,



Kenneth A. Hartmann, P.E.  
District Seven Secretary

KAH/JC  
Enclosures



Florida Department of Transportation

11201 N. MCKINLEY DRIVE • TAMPA, FL 33612-6456 • (813) 975-6039 • 1-800-226-7220

JEB BUSH  
GOVERNOR

THOMAS F. BARRY, JR.  
SECRETARY

October 9, 2000

The Honorable Steve Henning, Chairman  
District 5  
Board of County Commissioners  
601 S.E. 25th Avenue  
Ocala, FL 34471

RE: WPI Seg. No: 257188 1 / FAP No: FL62-020R / Citrus and Marion Counties, Florida  
S.R. 200 PD&E Study Reevaluation Official / Agency Kickoff Letter

Dear Commissioner Henning:

This is to inform you that the Florida Department of Transportation (FDOT) has begun a Reevaluation of the previously approved Project Development and Environment (PD&E) Study for a portion of S.R. 200 in Citrus and Marion Counties. The attached project location map depicts the limits of the study area, which extends from U.S. 41 to north of the Marion County Line, a length of approximately 6.7 miles.

A PD&E Study which included the subject segment of S.R. 200, from just north of U.S. 41 in Citrus County to C.R. 484 in Marion County, was approved by the Federal Highway Administration (FHWA) in November 1996. The PD&E Study recommended the widening of S.R. 200 to a four-lane divided facility. This Reevaluation will use current data to re-assess the impacts from implementing the recommendations of the original PD&E Study. The original recommendations may be modified to further minimize these effects. As part of the Reevaluation, the engineering and environmental documents prepared in the previous Study will be updated taking into account any changes that may have occurred since its approval.

The Reevaluation is scheduled to be completed by the Fall of 2001. The Public Involvement Program conducted during the PD&E Study did not indicate any substantive issues or significant controversy regarding the proposed improvements. A Reevaluation Public Workshop is scheduled to be held next Summer to inform the public of any changes that may be made compared to the previous Study and to provide a forum for comments and questions.



2571881-18

# S.R. 200 PD&E Study Reevaluation

from U.S. 41 to north of the Marion County Line, Florida

WPI Seg. No: 257188 1

FAP No: FL62-020R

October 2000

## Part I - Comments

We encourage you to provide your opinions and comments below in reference to this project to ensure that they are considered. If additional space is needed, please use the back of this form.

Citrus County has a pressing need to move this project forward. SR 200 is a vital transportation corridor for movement of goods and emergency evacuation.

RECEIVED ENVIRONMENTAL  
MANAGEMENT OFFICE  
1000 OCT 16 PM 2:23

## Part II - Request to be on mailing list

If you desire to be included on the project mailing list, please complete this part.

Curtis M. Karr, P.E., Director, Engineering Services

Name

3600 West Sovereign Path, Suite #241

Address

Lecanto, Florida 34461

City, State, Zip

Please submit form to:

Kenneth A. Hartmann, P.E., District Seven Secretary  
Attn: Jeraldo Comellas, Jr., P.E., District EMO Engineer  
Florida Department of Transportation  
M.S. 7-500  
11201 N. McKinley Drive  
Tampa, Florida 33612-6456



2571881-18

# S.R. 200 PD&E Study Reevaluation

from U.S. 41 to north of the Marion County Line, Florida

WPI Seg. No: 257188 1

FAP No: FL62-020R

October 2000

## Part I - Comments

We encourage you to provide your opinions and comments below in reference to this project to ensure that they are considered. If additional space is needed, please use the back of this form.

Please coordinate with Citrus Co. Utilities as we are going to be installing sewer mains along SR 200.

Contact Louis Badami, Utilities Director 352-527-7650

RECEIVED ENVIRONMENTAL  
MANAGEMENT OFFICE  
2000 NO 17 PM 1:15

## Part II - Request to be on mailing list

If you desire to be included on the project mailing list, please complete this part.

IAN McDONALD, AICP

Name

Citrus Co. Community Development, 3600 W. Sovereign Path, Ste. 140

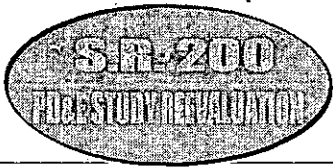
Address

Lecanto, FL 34461

City, State, Zip

Please submit form to:

Kenneth A. Hartmann, P.E., District Seven Secretary  
Attn: Jeraldo Comellas, Jr., P.E., District EMO Engineer  
Florida Department of Transportation  
M.S. 7-500  
11201 N. McKinley Drive  
Tampa, Florida 33612-6456



2571881-18

Plan. Please contact Mr. Noyes to obtain a copy. Thx J.C.  
**S.R. 200 PD&E Study Reevaluation**

from U.S. 41 to north of the Marion County Line, Florida  
WPI Seg. No: 257188 1  
FAP No: FL62-020R

October 2000

**Part I - Comments**

We encourage you to provide your opinions and comments below in reference to this project to ensure that they are considered. If additional space is needed, please use the back of this form.

SEE LETTER ATTACHED.

RECEIVED ENVIRONMENTAL  
MANAGEMENT OFFICE  
2000 OCT 30 PM 12:13

**Part II - Request to be on mailing list**

If you desire to be included on the project mailing list, please complete this part.

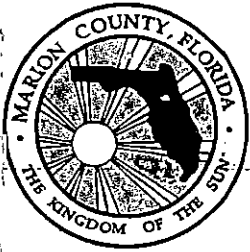
Richard A. Noyes - Marion County Parks & Recreation Department  
Name

8282 SE Hwy 314  
Address

Ocala, FL 34470  
City, State, Zip

Please submit form to:

**Kenneth A. Hartmann, P.E., District Seven Secretary**  
**Attn: Jeraldo Comellas, Jr., P.E., District EMO Engineer**  
**Florida Department of Transportation**  
**M.S. 7-500**  
**11201 N. McKinley Drive**  
**Tampa, Florida 33612-6456**



*Marion County*  
*Board of County Commissioners*  
*Parks & Recreation Department*

8282 S.E. Hwy. 314, Ocala, Florida 34470

(352) 236-7111 -- Suncom 667-7111 -- Fax (352) 236-7121

October 26, 2000

Kenneth A. Hartmann, P. E. Dist. 7 Secretary  
Attn: Jeraldo Comellas, Jr. P. E.  
Florida Department of Transportation  
11201 N. McKinley Drive/ M.S. 7-500  
Tampa, FL 33612-6456

Dear Mr. Comellas:

Marion County is under contract with the FDEP Office of Greenways and Trails to construct a large trailhead in this corridor on the Marjorie Harris Carr Cross Florida Greenway. Attached is the concept plan for this project. The timeframe for completion is by the end of calendar year 2001. In order to create a continuous greenway corridor in this area, a trail under pass and a separate underpass or bridge for the road to reconnect the hydrology of Ross Prairie and provide a wildlife corridor is necessary. The size of these two features should be adequate from a safety and an environmental perspective. Designing the road improvements so that they meet these trail and wildlife goals would be a vast improvement over the current design.

Thank you for this opportunity to comment on this project. Please put me on the mailing list.

Sincerely,

Richard Noyes  
Director

Enclosure

---

**APPENDIX C**

**Public Workshop**



## Florida Department of Transportation

11201 N. MCKINLEY DRIVE • TAMPA, FL 33612-6456 • (813)975-6000 • 1-800-226-7220

JEB BUSH  
GOVERNOR

THOMAS F. BARRY, JR.  
SECRETARY

April 2, 2002

The Honorable Bill Nelson  
United States Senator  
Sam M. Gibbons Federal Courthouse  
801 N. Florida Avenue, 4th Floor  
Tampa, FL 33602

RE: WPI Seg. No: 257188 1 / FAP No: FL62-020R  
S.R. 200 Project Development and Environment Study Reevaluation  
From U.S. 41 to north of the Marion County Line, Citrus County

Dear Senator Nelson:

You are invited to attend and participate in the S.R. 200 Public Workshop on April 25, 2002 from 4:30 to 7:30 p.m. at the Inverness Middle School located at 1950 N. U.S. 41 in Inverness.

In a Project Newsletter recently sent to you by the Florida Department of Transportation, the project is described in detail including the Recommended "Build" alternative that proposes to widen the existing two-lane road to a four-lane divided road. This information will be presented at the Public Workshop.

You may provide comments at the Public Workshop or written comments at the following address:

Mr. Robert M. Clifford, AICP  
District Planning Manager  
Florida Department of Transportation, District Seven  
11201 N. McKinley Drive, MS 7340  
Tampa, Florida 33612

All letters and correspondence need to be postmarked no later than May 6, 2002.

If you have any questions concerning this project, please contact Mark Clasgens, Project Manager at (800) 226-7220 / (813) 975-6450 or by e-mail at [mark.clasgens@dot.state.fl.us](mailto:mark.clasgens@dot.state.fl.us).

Sincerely,

*Kenneth A. Hartmann*  
for: Kenneth A. Hartmann, P.E.  
District Seven Secretary

KAH/BC



# Florida Department of Transportation

11201 N. MCKINLEY DRIVE • TAMPA, FL 33612-6456 • (813)975-6000 • 1-800-226-7220

JEB BUSH  
GOVERNOR

THOMAS F. BARRY, JR.  
SECRETARY

April 1, 2002

Mr. James E. St. John, Division Administrator  
Attn: Marvin Williams, Urban Transportation Engineer  
Federal Highway Administration  
227 North Bronough Street, Room 2015, M.S. 29  
Tallahassee, FL 32301-2015

RE: WPI Seg. No: 257188 1 / FAP No: FL62-020R  
S.R. 200 Project Development and Environment Study Reevaluation  
from U.S. 41 to north of the Marion County Line, Citrus County

Dear Mr. St. John:

You are invited to attend and participate in the S.R. 200 Public Workshop on April 25, 2002 from 4:30 to 7:30 p.m. at the Inverness Middle School located at 1950 N. U.S. 41 in Inverness.

In a Project Newsletter recently sent to you by the Florida Department of Transportation, the project is described in detail including the Recommended "Build" alternative that proposes to widen the existing two-lane road to a four-lane divided road. This information will be presented at the Public Workshop.

You may provide comments at the Public Workshop by giving an oral statement to the court reporter. You may also provide written comments by completing a Comment Form that can be submitted to the court reporter or dropped in one of the comment boxes at the Public Workshop. You may also mail your comments to the address on the Comment Form. All letters and correspondence need to be postmarked no later than May 6, 2002.

If you have any questions concerning this project, please contact Mark Clasgens, Project Manager at (800) 226-7220 / (813) 975-6450 or by e-mail at [mark.clasgens@dot.state.fl.us](mailto:mark.clasgens@dot.state.fl.us).

Sincerely,

Robert M. Clifford, AICP  
District Seven Planning Manager

KAH/BC

2571881-8



# Florida Department of Transportation

11201 N. MCKINLEY DRIVE \* TAMPA, FL 33612-6456 \* (813)975-6000 \* 1-800-226-7220

JEB BUSH  
GOVERNOR

THOMAS F. BARRY, JR.  
SECRETARY

April 8, 2002

RE: WPI No: 257188 I/ FAP No: FL62-020R  
SR 200 Project Development and Environment Study Reevaluation  
From US 41 to north of the Marion County Line, Citrus County

Dear Interested Citizen and Property Owner:

You are invited to attend and participate in the SR 200 Public Workshop on April 25, 2002 from 4:30 to 7:30 p.m. at the Inverness Middle School located at 1950 N. US 41 in Inverness.

In a Project Newsletter recently sent to you by the Florida Department of Transportation, the project is described in detail including the Recommended "Build" alternative that proposes to widen the existing two-lane road to a four-lane divided road. This information will be presented at the Public Workshop.

This letter also serves as notice to property owners that a whole or a portion of their property is within 300 feet of the recommended alternative centerline pursuant to Florida Statutes 339.155(6). However, the property may not be directly affected.

You may provide comments at the Public Workshop by giving an oral statement to the court reporter. You may also provide written comments by completing a Comment Form that can be submitted to the court reporter or dropped in one of the comment boxes at the Public Workshop. You may also mail us your comments to the address on the Comment Form. All letters and correspondence need to be post marked no later than May 6, 2002.

We invite and encourage you to attend and participate in the Public Workshop. If you have any questions concerning this project, please contact Mark Clasgens, Project Manager at (800) 226-7220 / (813) 975-6450 or by email at [mark.clasgens@dot.state.fl.us](mailto:mark.clasgens@dot.state.fl.us).

Sincerely,

Robert M. Clifford, AICP  
District Planning Manager

BC/kro

## PROJECT DESCRIPTION

S.R. 200 is a rural principal arterial that begins at U.S. 41 in the Town of Hernando in Citrus County and follows a north/northeast route to the City of Ocala in Marion County. Within the study limits, S.R. 200 accommodates both regional travel as well as local access to numerous commercial establishments, most of which are located near its southern terminus. Several residential neighborhoods and subdivisions are within the project limits.

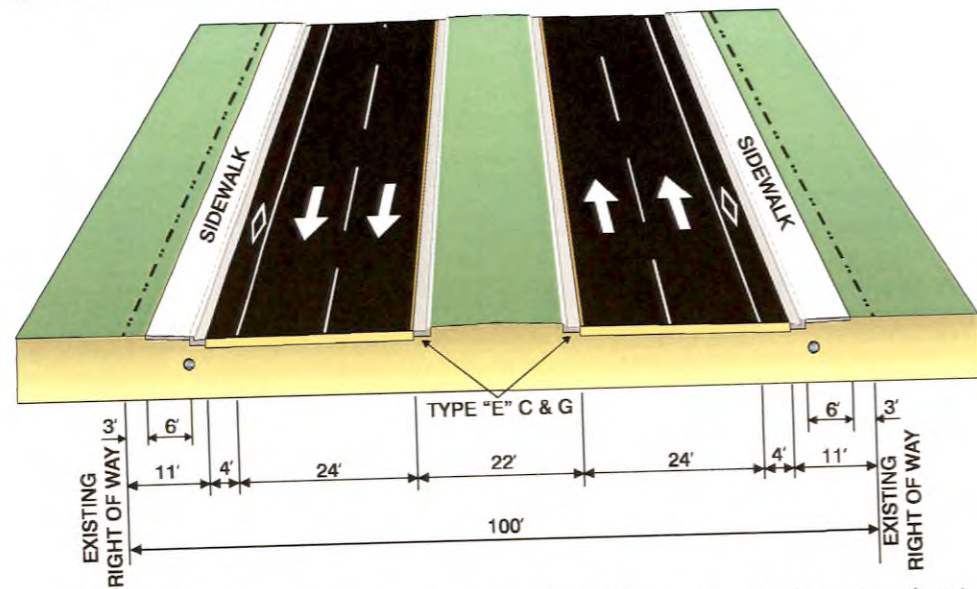
For analysis purposes, projects are usually divided into segments based on the existing land use, intersecting streets and projected traffic volumes for the design year. The following four segments were chosen:

- Segment 1: U.S. 41 to East Lake Park Drive
- Segment 2: East Lake Park Drive to East Chappell Court
- Segment 3: East Chappell Court to East Elise Court
- Segment 4: East Elise Court to Marion County Line

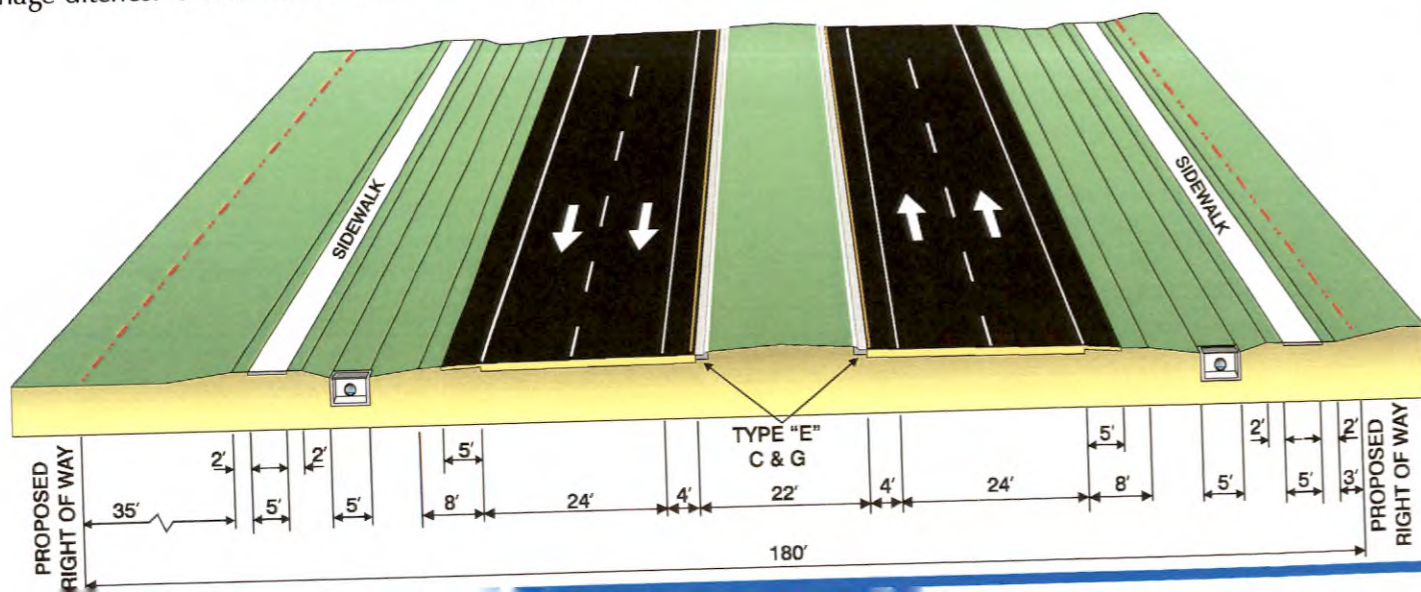
Options for different typical sections or shifting of the alignment are also being considered to minimize impacts.

The selection of a recommended alternative by Segment is made based on the estimated impacts for each alternative, estimated costs of each alternative, and input from both local and state officials.

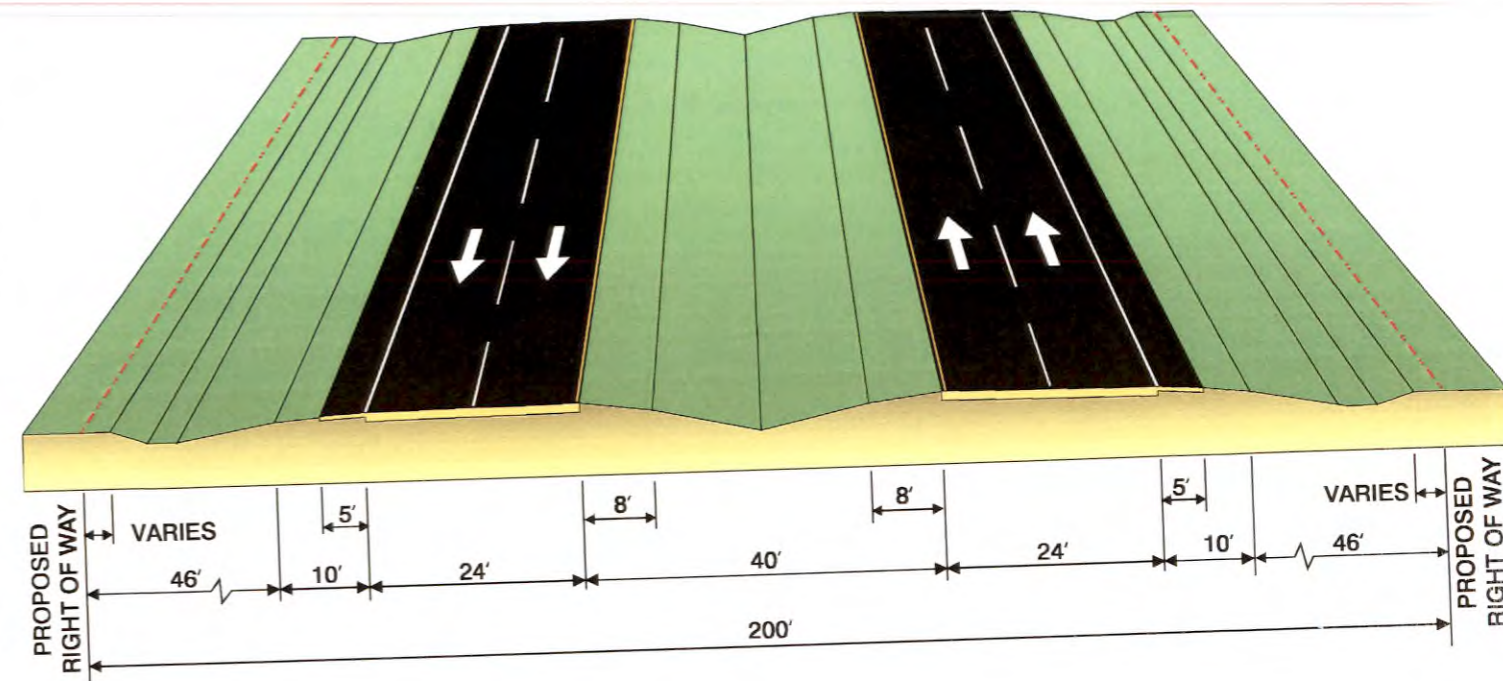
In Segment 1, the recommended alternative is a 4-lane divided urban curb and gutter typical section that includes two travel lanes in each direction, a 4-foot bicycle lane and an 11-foot border width on the outside of the travel lanes. These border widths include 6-foot sidewalks on both sides.



In Segments 2 and 3, the recommended alternative is a 4-lane divided suburban typical section that includes two travel lanes in each direction, a 4-foot paved inside shoulder, an 8-foot outside shoulder, of which 5 feet are paved and open drainage ditches. 5-foot sidewalks are included on both sides.



In Segment 4, the recommended alternative is a 4-lane divided rural typical section that includes two travel lanes in each direction, an 8-foot inside shoulder, and a 10-foot outside shoulder, of which 5 feet are paved and open drainage ditches.



## PROJECT NEED

Improvements to S.R. 200 are needed to accommodate anticipated traffic growth and improve traffic circulation and safety conditions. These improvements are also needed to provide adequate shoulder widths, border widths and pedestrian and bicycle facilities, which are currently substandard or non-existent. The Year 2000 existing daily traffic volume for this portion of S.R. 200 ranged from 10,100 to 11,000 vehicles per day. By Design Year 2025, this volume is projected to increase to between 23,000 and 27,000 vehicles per day. The need for improvements has been identified by the Withlacoochee Regional Planning Council in its Policy Plan and by Citrus County in its Comprehensive Plan.

## WHAT'S NEXT?

- Environmental analyses comparing the impacts of the preferred alternative versus the original approved PD&E Study alternative for the project segments will be performed.
- Detailed engineering and cost analyses will be completed and documented in various engineering and environmental reports.
- The recommended alternative will be presented for public comment at a Public Workshop tentatively scheduled for April 2002.
- FDOT will submit the reevaluation to FHWA for approval.



Looking north along the project at the Withlacoochee River crossing

## FDOT FIVE-YEAR TENTATIVE WORK PROGRAM

Fiscal Years 2002/2003 – 2006/2007

|                    |                       |
|--------------------|-----------------------|
| Design .....       | Fiscal Year 2002/2003 |
| Right-of-Way ..... | Not Currently Funded  |
| Construction ..... | Not Currently Funded  |

### HOW TO REACH US

We encourage you to take an active part in the S.R. 200 PD&E Study Reevaluation. If you wish to discuss the project with a Study Team member or be added to the mailing list, please contact Mark Clasgens, Project Manager, or Ginger Regalado, Community Involvement Specialist by:

Telephone: 1-800-226-7220

Fax: (813) 975-6451

E-mail: mark.clasgens@dot.state.fl.us  
ginger.regalado@dot.state.fl.us

Address: Florida Department of Transportation  
11201 North McKinley Drive, MS 7-500  
Tampa, Florida 33612-6456



FLORIDA DEPARTMENT OF TRANSPORTATION  
DISTRICT ENVIRONMENTAL MANAGEMENT OFFICE  
11201 NORTH MCKINLEY DRIVE, MS 7-500  
TAMPA, FLORIDA 33612-6456

# S.R. 200 PD&E STUDY REEVALUATION

FPN Seg. No. 257188 1 - FAP No. FL62 - 020R

March 2002



**S.R. 200**  
PD&E Study Reevaluation

## INTRODUCTION

The Florida Department of Transportation (FDOT) is currently conducting a Project Development and Environment (PD&E) Study Reevaluation for the proposed improvements to S.R. 200 (also known as the North Carl G. Rose Highway) from U.S. 41 to just north of the Marion County Line, a distance of approximately 6.7 miles (see Project Location Map). The FDOT is committed to keeping the public informed throughout the life of the project and soliciting community input during the project development process.

## PROJECT HISTORY

The original PD&E Study, which was completed in November 1996, extended from U.S. 41 to C.R. 484 in Marion County, a distance of approximately 12.8 miles. That PD&E Study recommended that S.R. 200 be widened to a 4-lane divided facility within these limits. From U.S. 41 to East Lake Park Drive, the widening was to occur within the existing 100-foot wide right-of-way by providing an urban typical section.

A rural typical section was recommended for the remainder of the project from East Lake Park Drive to C.R. 484. This rural typical section required 100 feet of right-of-way, in addition to the existing 100 feet of right-of-way for a total of 200 feet. It also included a ten-foot shoulder of which 5 feet is paved and has open drainage ditches.

This PD&E Study Reevaluation uses current data to reassess the effects of implementing the above described typical sections between U.S. 41 and the Marion County Line and where possible modify these recommended typical sections to further minimize the project's impacts.

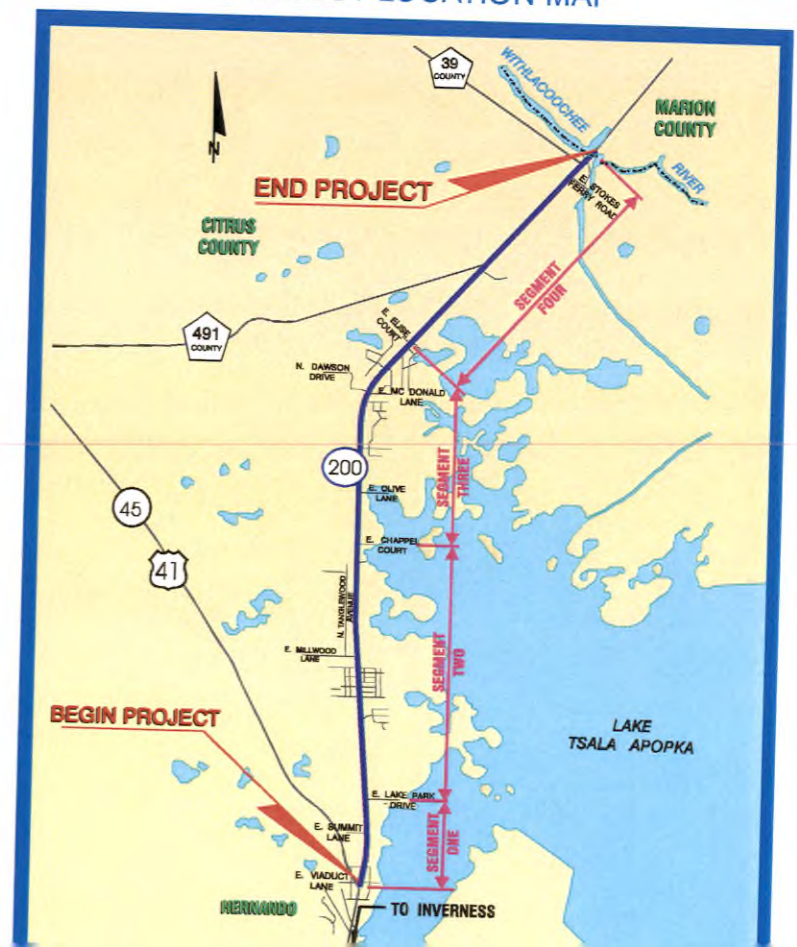
The remaining segment of S.R. 200 from the Marion County line to the original project terminus at C.R. 484 is currently in the final design phase to be widened to a four-lane rural facility.

## WHAT IS A PD&E STUDY REEVALUATION?

The PD&E Study process develops and documents feasible alternatives for roadway improvement projects. These alternatives are evaluated and a preferred alternative is selected based on environmental, engineering, socioeconomic, and safety needs. Public involvement activities are an integral part of this process, and include small group meetings, presentations to local governments and agencies as well as a Public Hearing. Following the Public Hearing, the FDOT recommends an alternative to the Federal Highway Administration (FHWA) based on the analyses and public input. FHWA then approves the recommended alternative by granting Location Design Acceptance (LDA).

A reevaluation is a process by which an approved PD&E Study is reanalyzed based on conditions that may have changed to ensure that the original decisions are still valid. Over time, factors such as land use, traffic patterns, and design standards could change, which could affect the recommendations made in the original PD&E Study.

## PROJECT LOCATION MAP





*Fold*

---

---

---

---

**Kenneth A. Hartmann, P.E., District Seven Secretary**  
**Attn: Robert M. Clifford, AICP**  
**District Seven Planning Manager**  
**Florida Department of Transportation, District 7**  
**M.S. 7-500**  
**11201 N. McKinley Drive**  
**Tampa, Florida 33612-6456**

---

*Fold*

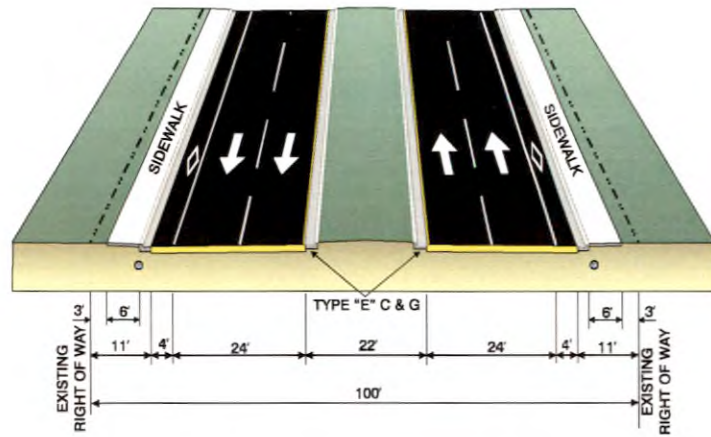
---

## PROPOSED IMPROVEMENTS

The Study corridor was divided into four segments:

### Segment 1

U.S. 41 to East Lake Park Drive



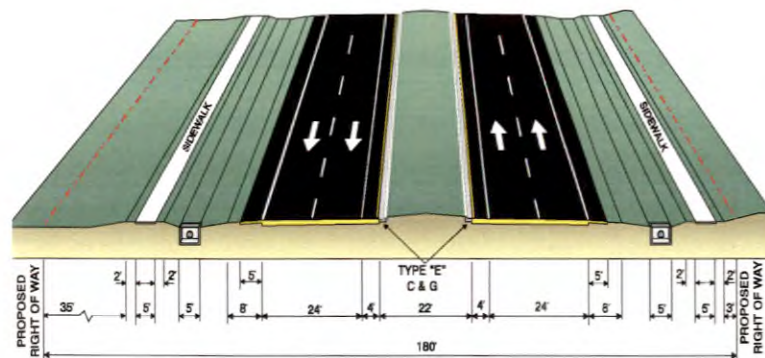
In Segment 1, the recommended alternative is a 4-lane divided urban curb and gutter typical section that includes two 12-foot travel lanes in each direction, a 4-foot bicycle lane, and an 11-foot border width on the outside of the travel lanes. These border widths include 6-foot sidewalks on both sides.

### Segment 2

East Lake Park Drive to East Chappell Court

### Segment 3

East Chappell Court to East Elise Court

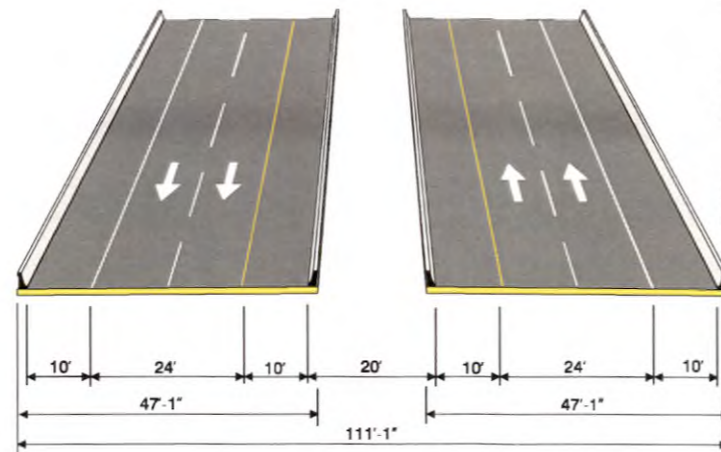
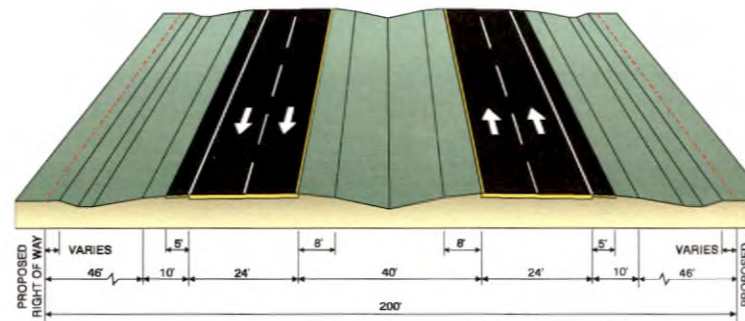


In Segments 2 and 3, the recommended alternative is a 4-lane divided suburban typical section that includes two 12-foot travel lanes in each direction, a 4-foot paved inside shoulder, an 8-foot outside shoulder, of which 5 feet are paved and open drainage ditches. 5-foot sidewalks are included on both sides.

### Segment 4

East Elise Court to Marion County Line

In Segment 4, the recommended alternative is a 4-lane divided rural typical section that includes two 12-foot travel lanes in each direction, an 8-foot inside shoulder, and a 10-foot outside shoulder, of which 5 feet are paved and open drainage ditches.



Segment 4 also includes two new bridges to replace the existing single bridge over the Withlacoochee River. The proposed bridge typical section will match the roadway with two 12-foot travel lanes and a 10-foot outside shoulder.

**Improvements to S.R. 200 north of the Withlacoochee River are in design by FDOT District 5 and are not part of this proposed project.**

There are advantages and disadvantages to the “Build” Alternatives.

Advantages include:

- Less traffic congestion;
- Improved levels of service on the roadway network; and
- Consistency with the local transportation plans.

Disadvantages include:

- Design, right of way, and construction costs;
- Temporary disruption to traffic during construction activities; and
- Minimal environmental effects.

The “No Build” Alternative, which consists of not constructing the proposed improvements and would limit any improvements to routine maintenance only, will remain a viable alternative throughout the duration of this Study.

As with the “Build” Alternatives, there are advantages and disadvantages associated with the “No Build” Alternative.

Advantages include:

- No new design, right of way, or construction costs; and
- No temporary disruption to traffic due to construction activities.

Disadvantages include:

- Continued increased traffic congestion resulting in increased road user costs;
- Unacceptable levels of service on the existing roadway network;
- Deterioration of air quality caused by traffic congestion and delays; and
- Not consistent with the local transportation plans

The major parameters by which each of the Alternatives were evaluated are summarized in the Evaluation Matrix on the back page of this brochure.

## FEDERAL-STATE PARTNERSHIP IN HIGHWAYS

Through a series of Congressional Acts, the Federal-Aid Highway Program was conceived and developed as a joint federal-state partnership. The success of this partnership is evident in the thousands of miles of highways and bridges comprising the nation’s transportation network.

The FDOT, in consultation with the Federal Highway Administration (FHWA), and in accordance with federal and state laws, makes final decisions for the location and design, construction, and maintenance of Florida’s highways.

The FHWA, in accordance with federal law cooperates with the State of Florida in planning and developing federal-aid transportation improvements. The FHWA reviews and approves all federal-aid actions proposed by the FDOT. When present at a Public Workshop or Public Hearing, FHWA representatives serve as observers and technical advisors regarding federal requirements and procedures.

## TITLE VI AND VIII COMPLIANCE

This Workshop is being held to afford all citizens the opportunity to understand the project and comment on their concerns to the FDOT. The Workshop is being held in compliance with Title VI of the Civil Rights Act of 1964 and Title VIII of the Civil Rights Act of 1968, as amended.

Public participation at this Workshop is encouraged and solicited without regard to race, color, creed, religion, sex, age, national origin, disability, or family status.

Persons wishing to express their concerns relative to FDOT compliance with Title VI and/or Title VIII, may do so by contacting: Mr. Jerry Comellas, District Seven Title VI and VIII Program Officer, MS 7-500, 11201 N. McKinley Drive, Tampa, Florida, 33612-6456, or the Florida Department of Transportation Minority Program Affairs Office, 605 Suwannee Street, MS 65, Tallahassee, Florida 32399. All inquiries or complaints will be handled according to FDOT procedure and in an expeditious manner.

## FDOT FIVE-YEAR TENTATIVE WORK PROGRAM

Fiscal Years 2002/2003 – 2006/2007

Design ..... Fiscal Year 2002/2003

Right-of-Way ..... Not Currently Funded

Construction ..... Not Currently Funded

## RIGHT OF WAY ACQUISITION AND RELOCATION

The FDOT has developed a Right of Way (ROW) and Relocation Program in accordance with Section 339.09, Florida Statutes, and the Uniform Relocation Assistance and Real Property Acquisition Act of 1970 (Public Law 91-646, as amended by Public Law 100-170). Brochures which describe in detail the FDOT's relocation assistance and right of way acquisition program are: Your Relocation: Residential; Your Relocation: Business, Farm, and Non-Profit Organization; and The Real Estate Acquisition Process. These brochures are available this evening, as are representatives from our ROW office. Questions on ROW may also be addressed by contacting: Mr. Joe Thompson, District Right of Way Manager, Florida Department of Transportation, MS 7-900, 11201 N. McKinley Drive, Tampa, Florida 33612-6456. Phone (800) 226-7220.

## WHAT HAPPENS NEXT

Your comments are very important. Please feel free to express your comments on the Comment Form included in this handout. All comments received will be taken into consideration before a final recommendation is made. You may drop the form in the comment box provided tonight or mail it to the address provided on the form by May 6, 2002.

Comments received from the public, local governments, review agencies and from the Workshop will help the FDOT select the recommended alternative. The PD&E Study will be completed when Location and Conceptual Design Acceptance is received from the FHWA in Spring 2002.

## EVALUATION MATRIX

| EVALUATION FACTORS   | SEGMENT     |              |                         |              | TOTAL        |
|--|-------------|--------------|-------------------------|--------------|--------------|
|  | 1           | 2            | 3                       | 4            |              |
|  | Urban       | Suburban     | Suburban <sup>(w)</sup> | Rural        |              |
| <b>POTENTIAL RELOCATIONS</b>   |             |              |                         |              |              |
| Business   | 0           | 1            | 5                       | 1            | 7            |
| Residential  | 0           | 18           | 12                      | 2            | 32           |
| <b>COMMUNITY FACILITIES INVOLVEMENT</b>  |             |              |                         |              |              |
| Firestation  | 0           | 0            | 1                       | 0            | 1            |
| <b>NOISE EFFECTS</b>   |             |              |                         |              |              |
| Noise impacted sites <sup>(1)</sup>  | 1           | 19           | 33                      | 0            | 53           |
| <b>CULTURAL/HISTORIC RESOURCES AND PUBLIC PARKS INVOLVEMENT</b>                |             |              |                         |              |              |
| Number of historic sites/structures within or adjacent to proposed ROW         | 0           | 0            | 0                       | 0            | 0            |
| Number of archaeological sites within or adjacent to proposed ROW              | 0           | 1            | 0                       | 3            | 4            |
| <b>NATURAL ENVIRONMENT INVOLVEMENT</b>   |             |              |                         |              |              |
| Total wetland involvement area (acres)   | 0           | 0            | 1.0                     | 4.0          | 5.0          |
| Threatened and endangered species  | 0           | 0            | 0                       | 0            | 0            |
| Area of base floodplain encroachment (acres)                                   | 0           | 0            | 1.7                     | 5.5          | 7.2          |
| <b>POTENTIAL HAZARDOUS MATERIAL AND PETROLEUM POLLUTANT CONTAMINATED SITES</b> |             |              |                         |              |              |
| Number of potential sites within or adjacent to proposed ROW                   | 3           | 1            | 3                       | 2            | 9            |
| <b>ESTIMATED COSTS (MILLION DOLLARS) - 2002</b>                                |             |              |                         |              |              |
| Construction cost <sup>(2)</sup>   | 1.98        | 4.63         | 5.51                    | 6.31 (3)     | 18.43        |
| ROW acquisition cost <sup>(3)</sup>  | 0.19        | 8.38         | 10.35                   | 7.31         | 26.23        |
| Utilities cost <sup>(4)</sup>  | ---         | ---          | ---                     | ---          | 5.33         |
| Engineering cost   | 0.30        | 0.69         | 0.83                    | 0.95         | 2.77         |
| Construction engineering and inspection cost                                   | 0.30        | 0.69         | 0.83                    | 0.95         | 2.77         |
| <b>Total</b>   | <b>2.77</b> | <b>14.39</b> | <b>17.52</b>            | <b>16.47</b> | <b>55.53</b> |

<sup>(w)</sup> Widening to the west

<sup>(1)</sup> Approach or exceed the noise abatement criteria

<sup>(2)</sup> Costs includes \$1.79 million for bridge structure

<sup>(3)</sup> Pond sites, though final locations have not been determined, are included in the estimated ROW acquisition costs

<sup>(4)</sup> Utility relocation costs were computed for the entire project and not by individual segments

## S.R. 200 PD&E Study Reevaluation

## PUBLIC WORKSHOP

**S.R. 200 PD&E Study Reevaluation**  
From U.S. 41 to north of the Marion County Line  
Citrus County, Florida  
WPI Seg. No. 257188 1 / FAP No. FL62 - 020R  
**April 25, 2002**



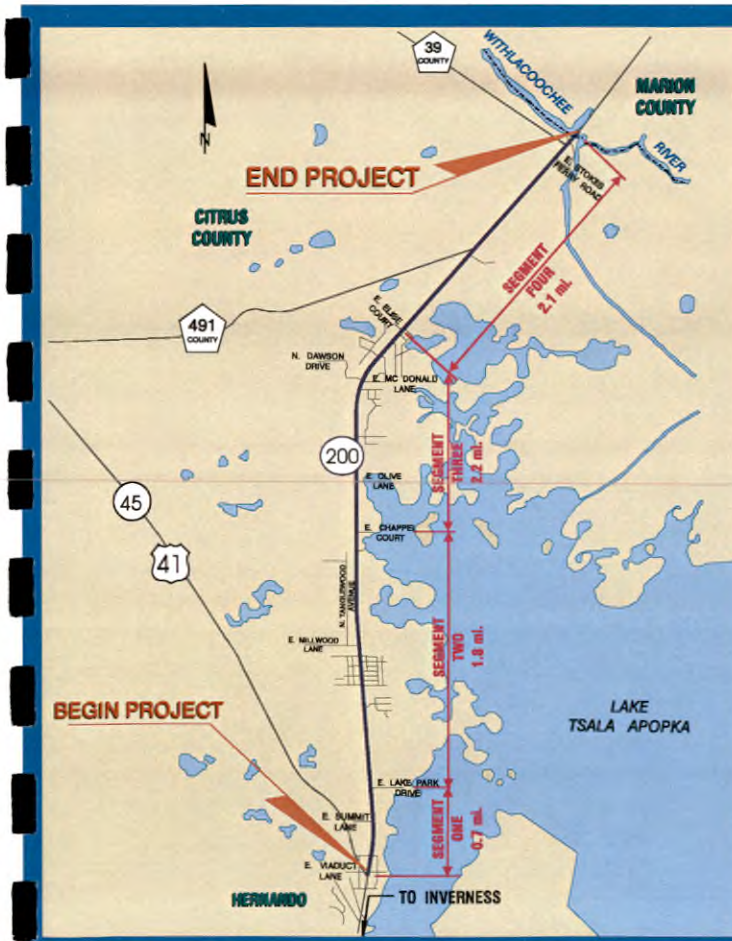
## WELCOME

The Florida Department of Transportation (FDOT) welcomes you to tonight's Public Workshop for the proposed improvements to S.R. 200. The purpose of this Workshop is to present information about the S.R. 200 PD&E Study Reevaluation and to give you an opportunity to ask questions and offer comments about the alternatives that are being proposed.

Tonight's Workshop will be conducted in an informal setting, with no formal presentation. During the Workshop, we encourage you to:

- View the continuously-running video presentation
- Review the materials that are on display
- Discuss any questions or concerns with Department representatives
- Provide your written comments on the project

## PROJECT LOCATION MAP



## PROJECT HISTORY

The original S.R. 200 Project Development & Environment Study was conducted by the Department's District Five office in DeLand and completed in 1996. The study limits were from U.S. 41 to C.R. 484 in Marion County.

A PD&E Study evaluates the location, conceptual design, and environmental and social impacts of various improvement alternatives for a given roadway. The approved conceptual design alternative for S.R. 200 included the addition of two travel lanes (one in each direction), the provision of sidewalks with bicycle facilities along both sides of the roadway for a portion of the project, and 5 feet paved shoulders for the rest of the segment.

Tonight's meeting will present information for this segment of S.R. 200 as part of the reevaluation effort conducted by the Department's District Seven. A reevaluation updates the environmental and engineering documents produced during the original PD&E Study and accounts for changes in existing conditions. The reevaluation will also determine if the approved design concept is still the most viable alternative. It also included the replacement of the existing bridge over the Withlacoochee River.

## PROJECT DESCRIPTION AND NEED

S.R. 200 is a rural principal arterial that begins at U.S. 41 in the Town of Hernando in Citrus County and follows a north/northeast route to the City of Ocala in Marion County. Within the study limits, S.R. 200 accommodates both regional travel as well as local access to numerous commercial establishments, most of which are located near its southern terminus. Several residential neighborhoods and subdivisions are within the project limits.

Improvements to S.R. 200 are needed to accommodate anticipated traffic growth and improve traffic circulation and safety conditions. These improvements are also needed to provide adequate shoulder widths, border widths and pedestrian and bicycle facilities, which are currently substandard or non-existent. The Year 2000 existing daily traffic volume for this portion of S.R. 200 ranged from 10,100 to 11,000 vehicles per day. By Design Year 2025, this volume is projected to increase to between 23,000 and 27,000 vehicles per day. The need for improvements has been identified by the Withlacoochee Regional Planning Council in its Policy Plan and by Citrus County in its Comprehensive Plan.