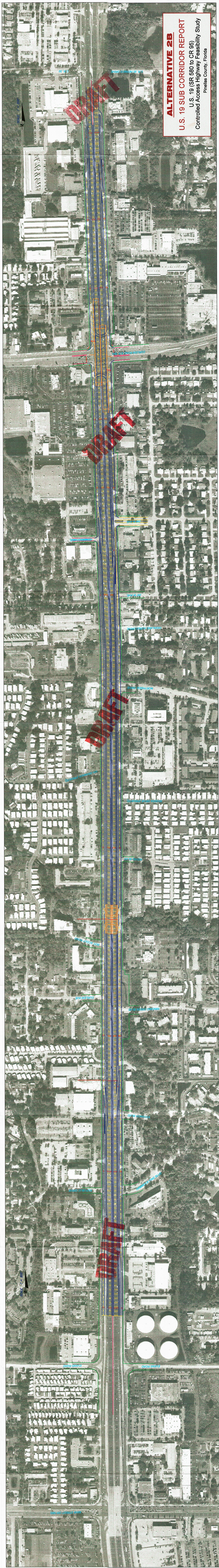
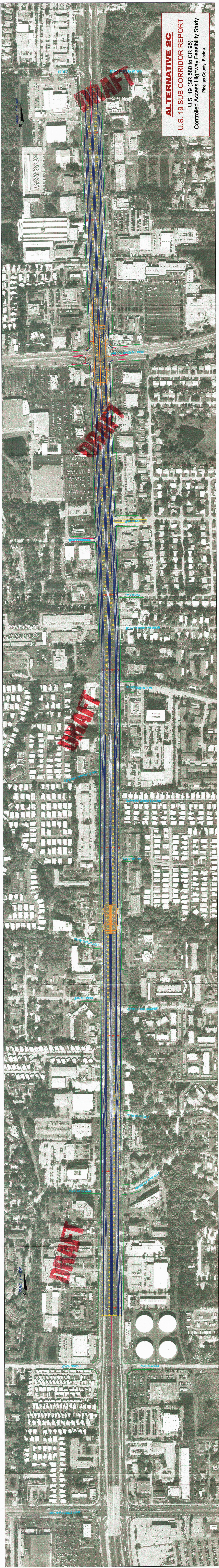


ALTERNATIVE 2A
U.S. 19 SUB CORRIDOR REPORT
U.S. 19 (SR 680 to CR 95)
Controlled Access Highway Feasibility Study
Pinellas County, Florida



ALTERNATIVE 2B
U.S. 19 SUB CORRIDOR REPORT
U.S. 19 (SR 680 to CR 95)
Controlled Access Highway Feasibility Study
Pinellas County, Florida



ALTERNATIVE 2C
U.S. 19 SUB CORRIDOR REPORT
U.S. 19 (SR 680 to CR 95)
Controlled Access Highway Feasibility Study
Pinellas County, Florida