

END  
SEGMENT 1  
10.930 M.P. →

N. 49th Ave.  
(33,177)

2,412 ft.

10.473 M.P.

1,494 ft

10.190 M.P.

2,100 ft

9.792 M.P.

1,573 ft

9.494 M.P.

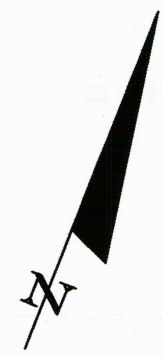
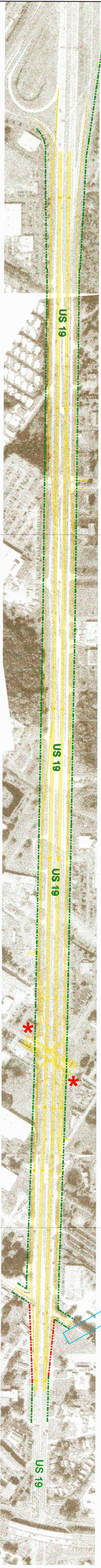
528 ft

BEGIN  
SEGMENT 1  
9.394 M.P. →

N. 76th Ave.

892 ft

9.225 M.P.



Scale 1" : 300' (Approximate)

**LEGEND**

- 1,550 ft DISTANCE BETWEEN MILE POSTS
- (57,578) U.S. 19 EXISTING AADT
- (5,757) SIDESTREET EXISTING AADT
- EXISTING RW
- PROPOSED RW
- === PROPOSED PAVEMENT

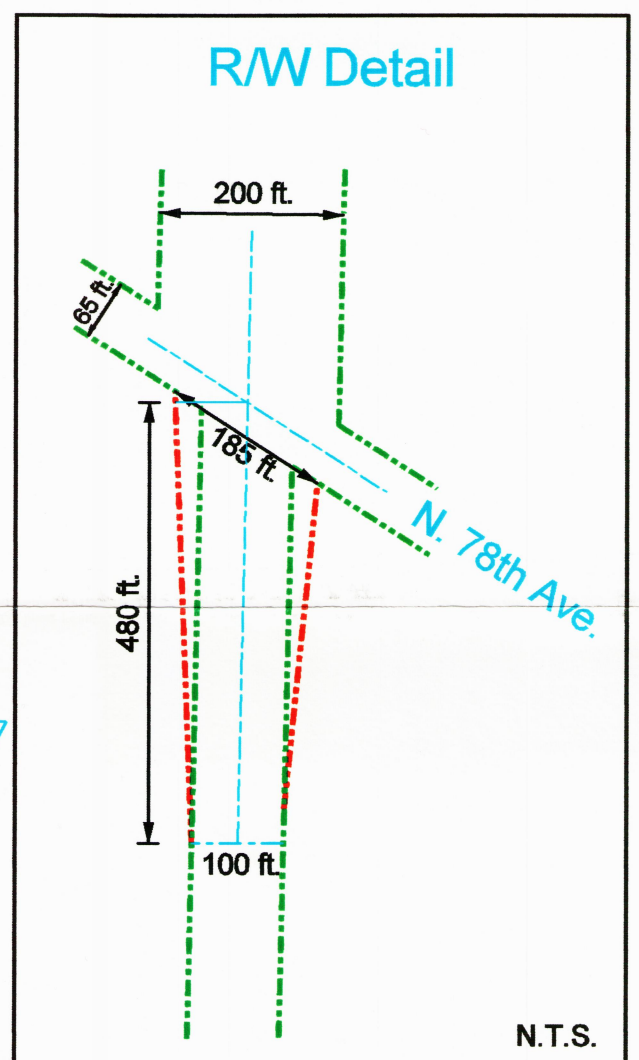
\* Approx 300 sq. ft. RW  
Corner Clip Required

Mainlands Blvd.  
(not available)

(62,641)

N. 82nd Ave.  
(6,534)

N. 78th Ave.



# US 19 Cost Estimates Construction Segment 1

Gandy Blvd.  
(43,851)