

# US 92 (SR 600)

From East of I-4 to East of County Line Road  
Project Development and Environment (PD&E) Reevaluation Study  
Work Program Item Segment No. 435749-1



## Public Hearing Scrapbook

Held on December 1 & 6, 2016  
HCC Trinkle Center, Sheraton Tampa East

**DRAFT**

*Public participation was solicited without regard to race, color, national origin, age, sex, religion, disability or family status.*





# US 92 (SR 600)

From East of I-4 to East of County Line Road  
Project Development and Environment (PD&E) Reevaluation Study  
Work Program Item Segment No. 435749-1



**CD of this Scrapbook, Graphic Displays, Handouts, and PowerPoint Presentation**





# US 92 (SR 600)

From East of I-4 to East of County Line Road  
Project Development and Environment (PD&E) Reevaluation Study  
Work Program Item Segment No. 435749-1



## Table Of Contents



Introduction	4
Project and Public Hearing Location Map	5
Florida Administrative Register & Newspaper Advertisements	7-8
Newsletter, Comment Form & Speaker Request Card	10-12
Public Hearing Sign-In Sheets	14-16
Display Graphics	18-26
PowerPoint Presentation with Script	28-32
Exterior Sign Locations & Photos	34-36





# US 92 (SR 600)

From East of I-4 to East of County Line Road  
Project Development and Environment (PD&E) Reevaluation Study  
Work Program Item Segment No. 435749-1



## Introduction

### **INTRODUCTION**

The Florida Department of Transportation (FDOT) conducted a Project Development and Environment (PD&E) Study Reevaluation for the proposed widening of US 92 (SR 600) from east of Interstate 4 (I-4) to east of County Line Road in Hillsborough County, Florida. The total project length is approximately 18.1 miles. The project location map is shown on the next page. The purpose of this public hearing scrapbook is to document the information that was presented at the hearing. This document includes the following information:

- Description of the proposed improvements
- Display graphics presented
- Citizen and FDOT/consultant sign-in sheets
- Newsletter and public hearing handouts
- Newspaper display advertisements
- PowerPoint presentation with script
- Photographs taken at the hearing

Also, a CD is included containing electronic files of this scrapbook as well as the PowerPoint presentation shown at the hearing and copies of the display boards.

### **BACKGROUND & PROJECT DESCRIPTION**

The original PD&E Study was approved by the Federal Highway Administration on March 24, 1994. The study generally recommended 4 and 6 lane build alternatives from east of I-4 to Mobley Street and from Park Road to County Line Road. However, the no-build alternative was selected for the segment between Mobley Street and Park Road with the exception of improving one section of Baker Street where it was recommended for conversion to an urban section between Mobley Street and Whitehall Street.

Due to a change in design standards and existing conditions, the proposed project's PD&E study was being reevaluated. The changes in design criteria are related to changes in the travel lane widths, bicycle lane widths, and median widths of the typical sections. The no-build alternative between Mobley Street and Park Road remains the recommended alternative. Proposed intersection improvements at Park Road and at County Line Road necessitate the extension of the build segment between Park Road and County Line Road to include a tie in to the existing roadway along US 92 to the west of Park Road and to the east of County Line Road. As identified in the original PD&E Study, the need for the project is based on capacity deficiencies, consistency with transportation plans, safety, and socioeconomic demand.

### **PUBLIC HEARING**

A public hearing was held in two sessions at two different locations.

First Session: December 1, 2016 from 5:30 p.m. to 7:30 p.m.

HCC Trinkle Center  
1206 N Park Road  
Plant City, FL 33563

Second Session: December 6, 2016 from 6:00 p.m. to 8:00 p.m.

Sheraton Tampa East Hotel  
10221 Princess Palm Avenue  
Tampa, FL 33610

Prior to the hearing, a notice was published in the Florida Administrative Register on Monday, November 28, 2016. A run of paper display advertisement was published in two separate issues of the Tampa Bay Times (Friday, November 11, 2016 and Monday, November 21, 2016) and La Gaceta (Friday, November 11, 2016 and Friday, November 18, 2016). Copies of these advertisements are shown in this scrapbook.

Approximately 4,000 affected property owners, agencies, officials, and interested citizens were sent a newsletter invitation in accordance with the Department's procedures. Approximately 240 citizens attended the hearing between both sessions. Copies of the sign-in sheets are included in this scrapbook. Prior to the hearing, four comments were received, and FDOT continued to receive comments until December 19, 2016. Forty One (41) written comments were received at the hearing sessions and between sessions combined. Nine comments were received after the Public Hearing. Comment forms submitted can be found in the *Final Comments and Coordination Report*.

The informal period for the first session of the public hearing was held from 5:30 p.m. to 6:30 p.m. and from 6:00 p.m. to 7:00 p.m. for the second session. The hearing venues were prepared as an open-house, during which citizens were given an opportunity to review a handout, various exhibits, and the study documents. Copies of the handouts and display boards can be found in this scrapbook. In addition, a project video (PowerPoint Presentation) ran continuously in a second room. Copies of the slides and script are included at the back of this scrapbook. FDOT and consultant representatives were available for one-on-one questions and answers. A court reporter was present throughout the hearing to verbally record comments as well.

The formal portion of the hearing was moderated by Mr. Kirk Bogen, PE, the FDOT District Seven Environmental Management Engineer, where members of the public could voice their opinions. His presentation covered the following topics:

- Description of the project and purpose of the hearing
- The exhibit with state and federal laws cited
- Right of way acquisition information
- Methods for the public to provide comments

Following the formal presentation, attendees were given an opportunity to make oral statements for the record. Seven people spoke publicly at the first session and there were no speakers at the second session. Following this segment, the formal session was adjourned and the informal session resumed for the remainder of the evening. A transcript of the oral presentation and all statements made to the court reporter are included in the study's *Final Comments & Coordination Report*.

In addition, representatives and table kiosks were set up for FDOT's right of way, access management, and safety units. This was so the public could direct their comments directly to those areas.

Reports and other information available at the public hearing included:

- Air Quality Memorandum [Draft]
- Cultural Resource Assessment Survey (CRAS) Report Volume 1 of 2 [Final]
- Cultural Resource Assessment Survey (CRAS) Report Volume 2 of 2 [Final]
- Existing Bridge Typical Sections
- Existing Typical Sections
- Level I Contamination Screening Evaluation Report (CSER) [Draft]
- Location Hydraulics Memorandum [Draft]
- Noise Study Report [Draft]
- Pond Sizing Report [Draft]
- Preliminary Engineering Report [Draft]
- State Environmental Impact Report [Draft]
- Traffic Technical Memorandum [Final]
- Traffic Technical Memorandum Appendices [Final]
- Utility Assessment Package [Final]
- Wetland Evaluation and Biological Assessment Report [Draft]



# US 92 (SR 600)

From East of I-4 to East of County Line Road  
 Project Development and Environment (PD&E) Reevaluation Study  
 Work Program Item Segment No. 435749-1

## Project and Public Hearing Location Map







# US 92 (SR 600)

From East of I-4 to East of County Line Road  
Project Development and Environment (PD&E) Reevaluation Study  
Work Program Item Segment No. 435749-1



## Florida Administrative Register & Newspaper Advertisements





# US 92 (SR 600)

From East of I-4 to East of County Line Road  
Project Development and Environment (PD&E) Reevaluation Study  
Work Program Item Segment No. 435749-1

## Florida Administrative Register

Published in  
the Florida  
Administrative  
Register on  
Monday,  
November 28,  
2016.

Florida Administrative Register

Volume 42, Number 229, November 28, 2016

and participate in a Corridor Analysis public meeting concerning the PD&E study for widening of U.S. 90 (State Road 10) from four to six lanes beginning at U.S. 90 (Scenic Highway) in Escambia County and continuing to Glover Lane in Santa Rosa County, a length of approximately 11 miles. This meeting is being held to present the initial engineering and environmental analysis to date and give the public an opportunity to provide comments concerning proposed improvements. There will be no formal presentation; however, maps, drawings and other information will be on display. FDOT representatives will be available to answer questions. A copy of the agenda may be obtained by contacting Peggy Kelley, FDOT Project Manager, toll-free at 1(888)638-0250, extension 1517 or at [peggy.kelley@dot.state.fl.us](mailto:peggy.kelley@dot.state.fl.us). Pursuant to the provisions of the Americans with Disabilities Act, any person requiring special accommodations to participate in this workshop/meeting is asked to advise the agency at least 7 days before the workshop/meeting by contacting Peggy Kelley, FDOT Project Manager, toll-free at 1(888)638-0250, extension 1517 or at [peggy.kelley@dot.state.fl.us](mailto:peggy.kelley@dot.state.fl.us). If you are hearing or speech impaired, please contact the agency using the Florida Relay Service, 1(800)955-8771 (TDD) or 1(800)955-8770 (Voice). For more information, you may contact: Peggy Kelley, FDOT Project Manager, toll-free at 1(888)638-0250, extension 1517 or [peggy.kelley@dot.state.fl.us](mailto:peggy.kelley@dot.state.fl.us).

#### OTHER AGENCIES AND ORGANIZATIONS

American Consulting Professionals - Deborah Turner  
The Florida Department of Transportation, District Seven announces hearings to which all persons are invited.

**DATES AND TIMES:** Thursday, December 1, 2016, Session 1: 5:30 p.m. – 7:30 p.m., Open House; 6:30 p.m., Formal Presentation, followed by a public comment period. Tuesday, December 6, 2016, Session 2: 6:00 p.m. – 8:00 p.m., Open House; 7:00 p.m., Formal Presentation, followed by a public comment period. The same information will be shown at both sessions.

**PLACES:** Session 1: HCC Trinkle Center, 1206 N. Park Road, Plant City, Florida 33563; Session 2: Sheraton Tampa East Hotel, 10221 Princess Palm Avenue, Tampa, Florida 33610

**GENERAL SUBJECT MATTER TO BE CONSIDERED:** You are invited to attend and participate in the Florida Department of Transportation (FDOT), District Seven public hearing for a Project Development and Environment (PD&E) Study Re-evaluation for proposed improvements to US 92 (SR 600) in Hillsborough County, Florida. This public hearing is being held to allow interested persons an opportunity to provide comments concerning the location, conceptual design, and social, economic, and environmental effects of widening

US 92 (SR 600) from east of I-4 to east of County Line Road, a distance of approximately 18 miles.

Department representatives will be available during an informal open house portion of the public hearing to answer questions and discuss the project. Following the informal portion of the public hearing, FDOT representatives will begin the formal presentation, which will provide an opportunity for attendees to make oral public comments. After the formal portion of the hearing, the informal open house will resume. See specific times listed above for the two session options. Please note the time differences. Draft project documents and other project related materials will be displayed, and a PowerPoint presentation will run continuously during the open house at both sessions.

A court reporter will be available to receive comments in a one-on-one setting. Persons wishing to submit written statements or other exhibits, in place of or in addition to oral statements, may do so at the hearing or by mailing them to Kirk Bogen, Environmental Management Engineer, FDOT, District Seven, 11201 N. McKinley Drive MS 7-500, Tampa, FL 33612-6456, or electronically to the project website at <http://active.fdot7studies.com/sr600/i4-to-county-line/>. All exhibits or statements must be postmarked or emailed no later than Monday, December 19, 2016 to become part of the official public hearing record.

Draft project documents are available from November 8, 2016 to December 19, 2016 at the locations listed below and on the project website, <http://active.fdot7studies.com/sr600/garden-lane-to-county-line/>.

- Bruton Memorial Library, 302 W. McLendon Street, Plant City, FL 33563; (Business Hours: Monday–Thursday 10:00 a.m. – 9:00 p.m.; Friday 10:00 a.m. – 6:00 p.m.; Saturday 10:00 a.m. – 5:00 p.m.; Sunday 1:00 p.m. – 5:00 p.m.)

- Seffner-Mango Branch Library, 410 N. Kingsway Road, Seffner, FL 33584; (Business Hours: Monday 10:00 a.m. – 8:00 p.m.; Tuesday 12:00 Noon – 8:00 p.m.; Wednesday – Saturday 10:00 a.m. – 6:00 p.m.; Sunday Closed)

- FDOT District Seven, 11201 N. McKinley Drive, Tampa, FL 33612; (Business Hours: Monday – Friday 8:00 a.m. – 5:00 p.m.)

Comuníquese con nosotros

Nos importa mucho la opinión del público sobre el proyecto. Si tiene preguntas o comentarios, o simplemente desea más información, por favor comuníquese con nosotros. Nuestra representante en español es:

Lilliam Escalera, [lilliam.escalera@dot.state.fl.us](mailto:lilliam.escalera@dot.state.fl.us), (813)975-6455

Departamento de Transporte de la Florida – Distrito 7

Public participation is solicited without regard to race, color, national origin, age, sex, religion, disability or family status.

5305

Florida Administrative Register

Volume 42, Number 229, November 28, 2016

A copy of the agenda may be obtained by contacting Lilliam Escalera, Project Manager, 11201 N. McKinley Drive, Tampa, FL 33612-6453, (813)975-6445 or 1(800)226-7220, or [lilliam.escalera@dot.state.fl.us](mailto:lilliam.escalera@dot.state.fl.us).

Pursuant to the provisions of the Americans with Disabilities Act, any person requiring special accommodations to participate in this workshop/meeting is asked to advise the agency at least 7 days before the workshop/meeting by contacting: Christopher Speese, Public Involvement Coordinator, 11201 N. McKinley Drive, Tampa, FL 33612-6453, (813)975-6405 or 1(800)226-7220, or [christopher.speese@dot.state.fl.us](mailto:christopher.speese@dot.state.fl.us). Any persons who require translation services (free of charge) should also contact Christopher Speese seven (7) days before the hearing. If you are hearing or speech impaired, please contact the agency using the Florida Relay Service, 1(800)955-8771 (TDD) or 1(800)955-8770 (Voice).

For more information, you may contact: Lilliam Escalera, Project Manager, 11201 N. McKinley Drive, Tampa, FL 33612-6453, (813)975-6445 or 1(800)226-7220, or [lilliam.escalera@dot.state.fl.us](mailto:lilliam.escalera@dot.state.fl.us).

#### OTHER AGENCIES AND ORGANIZATIONS

Stanley Consultants, Inc.

This notice has nothing to do with any rule or rulemaking process.

The Florida Department of Transportation (FDOT) announces an Alternatives Public Workshop to which all persons are invited.

**DATE AND TIME:** Thursday, December 8, 2016, 5:30 p.m. – 7:30 p.m., Open House: Alternatives Public Workshop

**PLACE:** Marriott Hotel, 4000 RCA Boulevard, Palm Beach Gardens, FL 33410

**GENERAL SUBJECT MATTER TO BE CONSIDERED:**

Financial Management No. 435803-1-22-02

Study Description: SR 9 (I-95) at Northlake Boulevard Interchange, Palm Beach County

Project Development and Environment (PD&E) Study

The Florida Department of Transportation (FDOT), District Four, is conducting an Alternatives Public Workshop for the SR 9 (I-95) at Northlake Boulevard Interchange Project Development and Environment (PD&E) Study. The Alternatives Public Workshop is being held as part of a current Project Development & Environment (PD&E) Study. This study is being conducted to evaluate proposed interchange improvements at I-95 and Northlake Boulevard and to provide documented information necessary for FDOT to reach a decision on the type, design, and location of the improvements. The project is being developed to reduce congestion, enhance safety, and achieve an acceptable level-

5306

of-service while minimizing potential impacts to the natural and human environments.

Participants may review study information and discuss the study with FDOT staff during the meeting. These meetings provide interested persons an opportunity to express their views concerning the social, natural, cultural and physical impacts of the proposed improvements. You are invited to visit the study website at [www.95northlake.com](http://www.95northlake.com).

Pursuant to the provisions of the Americans with Disabilities Act, any person requiring special accommodations to participate in this meeting is asked to advise the agency at least 7 days before the meeting by contacting Scott Thurman, PE at (954)777-4135.

Public participation is solicited without regard to race, color, national origin, age, sex, religion, disability or family status. Persons who require translation services (free of charge) should contact Scott Thurman, PE at (954)777-4135 at least 7 days before the meeting.

If you are hearing or speech impaired, please contact the agency using the Florida Relay Services, 1(800)955-8771 (TDD) or 1(800)955-8770 (Voice).

For more information, you may contact Scott Thurman, PE, the FDOT Project Manager at (954)777-4135, by mail at 3400 West Commercial Boulevard Fort Lauderdale, FL 33309, or by email at [scott.thurman@dot.state.fl.us](mailto:scott.thurman@dot.state.fl.us).

#### Section VII Notice of Petitions and Dispositions Regarding Declaratory Statements

NONE

#### Section VIII Notice of Petitions and Dispositions Regarding the Validity of Rules

Notice of Petition for Administrative Determination has been filed with the Division of Administrative Hearings on the following rules:

NONE

Notice of Disposition of Petition for Administrative Determination has been filed with the Division of Administrative Hearings on the following rules:

NONE





# US 92 (SR 600)

From East of I-4 to East of County Line Road  
Project Development and Environment (PD&E) Reevaluation Study  
Work Program Item Segment No. 435749-1

## Newspaper Advertisements

Published in the Tampa Bay Times on Friday, November 11, 2016 and Monday, November 21, 2016. Published in La Gaceta or Friday, November 11, 2016 and Friday, November 18, 2016

LEGAL NOTICE

LEGAL NOTICE



### US 92 (SR 600) PD&E Study Re-evaluation from East of I-4 to East of County Line Road Public Hearing

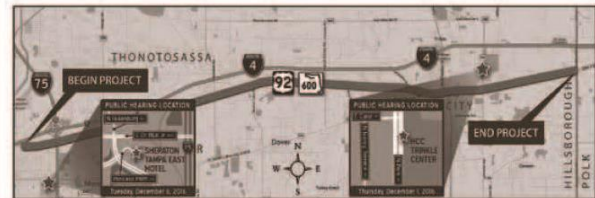
FDOT District Seven | WPI Segment No.: 435749-1 | Hillsborough County

The Florida Department of Transportation (FDOT) invites you to attend and participate in a public hearing regarding a Project Development and Environment (PD&E) Study Re-evaluation for the proposed alternative capacity and operational improvements along US 92 (SR 600) for approximately 18 miles from east of I-4 to east of County Line Road in Hillsborough County. The proposed project is intended to accommodate projected future traffic. Multi-modal improvements such as sidewalks, bicycle facilities, and transit accommodations will be considered as part of the project.

These public hearings are being held to allow interested persons the opportunity to provide comments concerning the location, conceptual design, and social, economic, and environmental effects of the proposed improvements. This public hearing will be held in two separate sessions at the following locations. The same information will be shown at both sessions.

**Public Hearing Session 1:**  
**Where:** HCC Trinkle Center  
1206 N. Park Road  
Plant City, Florida 33563  
**Date:** Thursday, December 1, 2016  
**Time:** 5:30 p.m. – 7:30 p.m. Open House  
6:30 p.m. Formal Presentation

**Public Hearing Session 2:**  
**Where:** Sheraton Tampa East Hotel  
10221 Princess Palm Avenue  
Tampa, Florida 33610  
**Date:** Tuesday, December 6, 2016  
**Time:** 6:00 p.m. – 8:00 p.m. Open House  
7:00 p.m. Formal Presentation



Department representatives will be available during an informal open house portion of the public hearing to answer questions and discuss the project. Following the informal portion of the public hearing, FDOT representatives will begin the formal presentation, which will provide an opportunity for attendees to make oral public comments. After the formal portion of the hearing, the informal open house will resume. See specific times listed above for the two session options. Please note the time differences. Draft project documents and other project-related materials will be displayed, and a PowerPoint presentation will run continuously during the open house at both sessions. A court reporter will be available to receive comments in a one-on-one setting. Persons wishing to submit written statements or other exhibits, in place of or in addition to oral statements, may do so at the hearing or by mailing them to Kirk Bogen, Environmental Management Engineer, FDOT, District Seven, 11201 N. McKinley Drive MS 7-500, Tampa, FL 33612-6456, or electronically to the project website at <http://active.fdot7studies.com/sr600/garden-lane-to-county-line/>. All exhibits or statements must be postmarked or emailed no later than Monday, December 19, 2016 to become part of the official public hearing record.

Draft project documents will be available for public review from Tuesday, November 8, 2016 to Monday, December 19, 2016, at the locations listed below and on the project website, <http://active.fdot7studies.com/sr600/garden-lane-to-county-line/>. For more information, please contact Lilliam Escalera, Project Manager, at (813) 975-6445, or [lilliam.escalera@dot.state.fl.us](mailto:lilliam.escalera@dot.state.fl.us).

**Bruton Memorial Library**  
302 West McLendon Street  
Plant City, Florida 33563  
(813) 757-9215  
Mon-Thur 10:00 a.m. – 9:00 p.m.  
Friday 10:00 a.m. – 6:00 p.m.  
Saturday 10:00 a.m. – 5:00 p.m.  
Sunday 1:00 p.m. – 5:00 p.m.

**FDOT District Seven**  
Planning & Environmental  
Management Office  
11201 N. McKinley Drive  
Tampa, FL 33612  
(813) 975-6445  
Mon-Fri 8:00 a.m. – 5:00 p.m.  
Saturday & Sunday Closed

**Seffner-Mango Branch Library**  
410 N. Kingsway Road  
Seffner, FL 33584  
(813) 273-3652  
Mon 10:00 a.m. – 8:00 p.m.  
Tues 12:00 p.m. – 8:00 p.m.  
Wed-Sat 10:00 a.m. – 6:00 p.m.  
Sunday Closed

Public participation is solicited without regard to race, color, national origin, age, sex, religion, disability or family status. Persons who require special accommodations under the Americans with Disabilities Act or persons who require translation service (free of charge) should contact Christopher Speese, Public Involvement Coordinator, at (813) 975-6405 or (800) 226-7220 at least seven (7) working days in advance of the hearing session.

### From the front page

#### » LIGHTNING continued from 1B

keting for the Lightning. This is the second store the Lightning will operate with Delaware North, a hospitality management company that also operates the Lightning's flagship retail store inside Amalie Arena.

"There are certain licenses that teams must have with the NHL (or other sport governing bodies) to sell merchandise, which makes opening a store difficult," Blankenship said. "But we've had a licensed online store for years with Delaware North, where we offer much more than just Lightning gear. This is a natural next step."

The Tampa Bay Times talked to Blankenship about the new store a week before it is set to open.

**Why would the Tampa Bay Lightning want to open a retail store, especially at a time when fewer people are shopping in malls and doing so more online?**

The mall makes a lot of marketing sense. International Plaza draws 18 million people a year. It's ahead of the curve in terms of retail operations. It's different than other malls in that it is a destination. Other malls tend to be very locally focused, very neighborhood-type centers. Like, if you live in Brandon you go to Westfield Brandon. International Plaza was designed to be a destination. With all the night-life options on Bay Street and the types of stores they have inside, it draws people from all over. That mall matters and that's why we're there.

What else matters is that the Lightning brand is the strongest it's ever been, even though we still have plenty of room to grow. This store gives us an opportunity to reach fans outside of

**How do you plan to use the store to promote the Lightning beyond selling T-shirts and hats?**

The goal is to keep the Lightning on the mind of our fans. We've had a partnership with International Plaza since 2014 where we've wrapped the elevators in the mall with the Lightning brand, hung flags and banners. I think years ago we used to have a kiosk where we sold tickets. But this marketing partnership has been very beneficial for us, and this is an extension of that.

It allows us to activate at that mall. We can bring in ThunderBug, or the Lightning girls or the players for events where we haven't been able to have that kind of experience before. I think the mall sees us as a very different type of retail partner. We're not just a corporate store, we're invested in this community. There's a lot of opportunity there.

**Why is now a good time to open a store?**

The Lightning brand is so strong. We see banners and car magnets and flags all around Tampa Bay. But the reality is, we're still a growing brand and we're looking for opportunities to continue to strengthen it. Having a presence in International Plaza will help us do that, I think. Right now the store is made up of 750 square feet of sales space and 750 square feet of storage space. We have the flexibility to increase the sales space as we go and plan to do so. We put TVs in the store so that ESPN is running all day.

Honestly, economies of scale come into play. We sell the vast majority of our merchandise on

### Tampa Bay Times

of the process. Our flagship store is in our arena. But this is just another destination for fans in the Tampa Bay area.

Contact Justine Griffin at [jgriffin@tampabay.com](mailto:jgriffin@tampabay.com) or (727) 893-9467. Follow @SunBisGriffin.



### US 92 (SR 600) PD&E Study Re-evaluation from East of I-4 to East of County Line Road Public Hearing

FDOT District Seven | WPI Segment No.: 435749-1 | Hillsborough County

The Florida Department of Transportation (FDOT) invites you to attend and participate in a public hearing regarding a Project Development and Environment (PD&E) Study Re-evaluation for the proposed alternative capacity and operational improvements along US 92 (SR 600) for approximately 18 miles from east of I-4 to east of County Line Road in Hillsborough County. The proposed project is intended to accommodate projected future traffic. Multi-modal improvements such as sidewalks, bicycle facilities, and transit accommodations will be considered as part of the project.

These public hearings are being held to allow interested persons the opportunity to provide comments concerning the location, conceptual design, and social, economic, and environmental effects of the proposed improvements. This public hearing will be held in two separate sessions at the following locations. The same information will be shown at both sessions.

**Public Hearing Session 1:**  
**Where:** HCC Trinkle Center  
1206 N. Park Road  
Plant City, Florida 33563  
**Date:** Thursday, December 1, 2016  
**Time:** 5:30 p.m. – 7:30 p.m. Open House  
6:30 p.m. Formal Presentation

**Public Hearing Session 2:**  
**Where:** Sheraton Tampa East Hotel  
10221 Princess Palm Avenue  
Tampa, Florida 33610  
**Date:** Tuesday, December 6, 2016  
**Time:** 6:00 p.m. – 8:00 p.m. Open House  
7:00 p.m. Formal Presentation



Department representatives will be available during an informal open house portion of the public hearing to answer questions and discuss the project. Following the informal portion of the public hearing, FDOT representatives will begin the formal presentation, which will provide an opportunity for attendees to make oral public comments. After the formal

portion of the hearing, the informal open house will resume. See specific times listed above for the two session options. Please note the time differences. Draft project documents and other project related materials will be displayed, and a PowerPoint presentation will run continuously during the open house at both sessions. A court reporter will be available to receive comments in a one-on-one setting. Persons wishing to submit written statements or other exhibits, in place of or in addition to oral statements, may do so at the hearing or by mailing them to Kirk Bogen, Environmental Management Engineer, FDOT, District Seven, 11201 N. McKinley Drive MS 7-500, Tampa, FL 33612-6456, or electronically to the project website at <http://active.fdot7studies.com/sr600/garden-lane-to-county-line/>. All exhibits or statements must be postmarked or emailed no later than Monday, December 19, 2016 to become part of the official public hearing record.

Draft project documents will be available for public review from Tuesday, November 8, 2016 to Monday, December 19, 2016, at the locations listed below and on the project website, <http://active.fdot7studies.com/sr600/garden-lane-to-county-line/>. For more information, please contact Lilliam Escalera, Project Manager, at (813) 975-6445, or [lilliam.escalera@dot.state.fl.us](mailto:lilliam.escalera@dot.state.fl.us).

**Bruton Memorial Library**  
302 West McLendon Street  
Plant City, Florida 33563  
(813) 757-9215  
Mon-Thur 10:00 a.m. – 9:00 p.m.  
Friday 10:00 a.m. – 6:00 p.m.  
Saturday 10:00 a.m. – 5:00 p.m.  
Sunday 1:00 p.m. – 5:00 p.m.

**FDOT District Seven**  
Planning & Environmental  
Management Office  
11201 N. McKinley Drive  
Tampa, FL 33612  
(813) 975-6445  
Mon-Fri 8:00 a.m. – 5:00 p.m.  
Saturday & Sunday Closed

**Seffner-Mango Branch Library**  
410 N. Kingsway Road  
Seffner, FL 33584  
(813) 273-3652  
Mon 10:00 a.m. – 8:00 p.m.  
Tues 12:00 p.m. – 8:00 p.m.  
Wed-Sat 10:00 a.m. – 6:00 p.m.  
Sunday Closed

Public participation is solicited without regard to race, color, national origin, age, sex, religion, disability or family status. Persons who require special accommodations under the Americans with Disabilities Act or persons who require translation service (free of charge) should contact Christopher Speese, Public Involvement Coordinator, at (813) 975-6405 or (800) 226-7220 at least seven (7) working days in advance of the hearing session.

### La Gaceta





# US 92 (SR 600)

From East of I-4 to East of County Line Road  
Project Development and Environment (PD&E) Reevaluation Study  
Work Program Item Segment No. 435749-1



## Newsletter, Comment Form & Speaker Request Card





# US 92 (SR 600)

From East of I-4 to East of County Line Road  
 Project Development and Environment (PD&E) Reevaluation Study  
 Work Program Item Segment No. 435749-1

## Newsletter

The newsletter was mailed on Tuesday, November 15, 2016 and distributed at the public hearing sessions.

The public hearing newsletter served as a property owner notice and an invitation to interested parties on the project mailing list.



### FDOT Adopted Five Year Work Program FY 2017-2021

US 92 (SR 600) from US 301 to CR 579 is funded for design in FY 2017 and US 92 (SR 600) from Park Road to County Line Road is funded for design in FY 2017. The right-of-way and construction phases for these segments are not currently funded in FDOT's Adopted Five-Year Work Program, but they are included in the Hillsborough MPO Imagine 2040 Long Range Transportation (LRTP) Plan Cost Feasible Plan. There is no current or future funding programmed for the segment between Mango Road and Mobley Street.

Funding Summary: Garden Lane to Mango Road		
Phase	Time Frame (Fiscal Year)	Est. Cost
Preliminary Engineering (Final Design) <sup>(1)</sup>	2017	\$1,250,000
Right-of-Way <sup>(2)</sup>	2026-2030	\$21,570,000
Construction <sup>(2)</sup>	2026-2030	\$43,140,000
<b>Total</b>		<b>\$65,960,000</b>

Funding Summary: Mango Road to Mobley Street		
Phase	Time Frame (Fiscal Year)	Est. Cost
Preliminary Engineering (Final Design) <sup>(3)</sup>	Not Currently Funded	\$9,150,000
Right-of-Way <sup>(3)</sup>	Not Currently Funded	\$100,431,300
Construction <sup>(3)</sup>	Not Currently Funded	\$91,500,000
<b>Total</b>		<b>\$201,081,300</b>

Funding Summary: Park Road to County Line Road Segment		
Phase	Time Frame (Fiscal Year)	Est. Cost
Preliminary Engineering (Final Design) <sup>(1)</sup>	2017	\$1,800,000
Right-of-Way <sup>(2)</sup>	2021-2025	\$19,380,000
Construction <sup>(2)</sup>	2021-2025	\$38,780,000
<b>Total</b>		<b>\$59,960,000</b>

(1) Hillsborough County MPO TIP for FY 2016/17 to 2020/21  
 (2) Hillsborough County MPO Imagine 2040 LRTP, Cost Feasible Plan  
 (3) FDOT Long Range Estimates (LRE) program

### Comuniquese con Nosotros

Nos importa mucho la opinión del público sobre el proyecto. Si tiene preguntas o comentarios, o simplemente desea más información, por favor comuníquese con nosotros. Nuestra representante en español es: **Lilliam Escalera**, (813) 975-6445, Departamento de Transporte de la Florida - Distrito 7.

### Right-of-Way Acquisition (ROW) Procedure

We understand that when a transportation project proposes the acquisition of private property, you may have questions and concerns. To better educate and inform you about the right-of-way acquisition process and your rights, the department has created real estate acquisition and relocation brochures. These brochures and other education materials will be available at the public hearing. Copies of the brochures may also be found on our website: <http://www.dot.state.fl.us/rightofway/Documents.shtm>. We are interested in hearing your concerns and answering your questions. We also encourage you to speak with the departments' Project Manager or a Right-of-Way Representative at your convenience.

### Non-Discrimination Laws

Public participation is solicited without regard to race, color, national origin, age, sex, religion, disability or family status. Persons who require special accommodations under the Americans with Disabilities Act or persons who require translation services (free of charge) should contact Christopher Speese, Public Involvement Coordinator, at (813) 975-6405, or by email to: [christopher.speese@dot.state.fl.us](mailto:christopher.speese@dot.state.fl.us) at least seven (7) days before the public hearing.



# US 92 (SR 600)

From East of I-4 to East of County Line Road  
 Project Development and Environment (PD&E) Study Re-evaluation  
 WPI Segment No: 435749-1 | Hillsborough County, Florida | November 2016

The Public Hearing is being held at the following locations:

- Public Hearing Session 1 (East)**  
 Date: December 1, 2016  
 Place: HCC Trinkle Center  
 1206 N. Park Road  
 Plant City, FL 33563  
 Time: 5:30 pm-7:30 pm | Open House  
 6:30 pm | Formal Presentation
- Public Hearing Session 2 (West)**  
 Date: December 6, 2016  
 Place: Sheraton Tampa East Hotel  
 10221 Princess Palm Avenue  
 Tampa, FL 33610  
 Time: 6:00 pm-8:00 pm | Open House  
 7:00 pm | Formal Presentation

### WE WANT YOUR INPUT!

A successful project depends on the public's participation in the project's development.

To provide comments, ask questions, and make suggestions about the project contact:

**Lilliam Escalera**  
 Project Manager  
 813-975-6445 · 800-226-7220  
 — Or —  
**Kris Carson**  
 Public Information  
 813-975-6202 · 800-226-7220  
 Send written comments to:  
**Kirk Bogen, P.E.**  
 Environmental Management Engineer  
 Florida Department of Transportation  
 District Seven  
 11201 N. McKinley Drive  
 MS 7-500  
 Tampa, FL 33612-6456  
 Email comments to:  
[lilliam.escalera@dot.state.fl.us](mailto:lilliam.escalera@dot.state.fl.us)

You may submit written comments or other exhibits, in place of or in addition to oral comments, at the hearing or by mailing your comments to the address preprinted on the back of the attached comment form or enter them on the project website at:

<http://active.fdot7studies.com/sr600/i4-to-county-line/>

All comments or other exhibits must be postmarked no later than **Monday, December 19, 2016** to become part of the official public hearing record.

### Dear Property Owner or Interested Citizen:

You are invited to attend and participate in the Florida Department of Transportation (FDOT), District Seven public hearing for a Project Development and Environment (PD&E) Study Re-evaluation for proposed improvements to US 92 (SR 600) in Hillsborough County, Florida. This public hearing is being held to allow interested persons an opportunity to provide comments concerning the location, conceptual design, and social, economic, and environmental effects of widening US 92 (SR 600) from east of I-4 to east of County Line Road, a distance of approximately 18.1 miles.

This letter serves as notice to property owners (pursuant to F.S.339.155) that all or a portion of their property is within 300 feet of the edge of right-of-way of the proposed project. However, this does not mean that all properties will be directly affected.



The public hearing will be held in two sessions (two different days/two different locations). Please note the time differences as well. The same information will be shown at both sessions, so feel free to attend the session that is most convenient to you. Department representatives will be available at the public hearing beginning at 5:30 pm on December 1st (6:00 pm on December 6th) to answer questions and discuss the project informally. Draft project documents and other project related materials will be displayed, and a PowerPoint presentation will run continuously during the open house. FDOT representatives will begin the formal portion of the hearing at 6:30 pm on December 1st (7:00 pm on December 6th), which will provide an opportunity for attendees to make formal oral public comments. Following the formal portion of the hearing, the informal open house will resume and continue until 7:30 pm on December 1st (8:00 pm on December 6th). A court reporter will be available to receive comments in a one-on-one setting. Persons wishing to submit written statements or other exhibits, in place of or in addition to oral statements, may do so at the hearing or by mailing them to Lilliam Escalera, Project Manager, FDOT, District Seven, 11201 N. McKinley Drive MS 7-500, Tampa, FL 33612-6456, or electronically to the project website at <http://active.fdot7studies.com/sr600/i4-to-county-line/>. All exhibits or statements must be postmarked or emailed no later than **Monday, December 19, 2016** to become part of the official public hearing record.

If you have questions about the project or the scheduled hearing, please contact:

Lilliam Escalera, Project Manager  
 (813) 975-6445  
[lilliam.escalera@dot.state.fl.us](mailto:lilliam.escalera@dot.state.fl.us)

Sincerely,  
  
**Kirk Bogen, P.E.**  
 Environmental Management Engineer

Draft project documents will be available for public review at the following locations from **Tuesday, November 8, 2016 to Monday, December 19, 2016**

**Seffner-Mango Branch Library**  
 410 N. Kingsway Road  
 Seffner, FL 33584  
 Mon 10 a.m. - 8 p.m.  
 Tues 12 p.m. - 8 p.m.  
 Wed-Sat 10 a.m. - 6 p.m.  
 Sun Closed

**Brunton Memorial Library**  
 302 W. McLendon Street  
 Plant City, FL 33563  
 Mon-Thur 10 a.m. - 9 p.m.  
 Fri 10 a.m. - 6 p.m.  
 Sat 10 a.m. - 5 p.m.  
 Sun 1 p.m. - 5 p.m.

**FDOT District Seven**  
 11201 N. McKinley Drive  
 Tampa, FL 33612  
 Mon-Fri 8 a.m.-5 p.m.





# US 92 (SR 600)

From East of I-4 to East of County Line Road  
 Project Development and Environment (PD&E) Reevaluation Study  
 Work Program Item Segment No. 435749-1

## Newsletter

The newsletter was mailed on Tuesday, November 15, 2016 and distributed at the public hearing sessions.

The public hearing newsletter served as a property owner notice and an invitation to interested parties on the project mailing list.

### What is a PD&E Study Re-evaluation?

A **re-evaluation** is the process used to document compliance with federal laws and to identify any changes that may have occurred since the approval of the original environmental document. The original PD&E study for this portion of US 92 (SR 600) was approved on March 24, 1994. However, upon completion, the study was put on hold and not advanced to the next phase of development.

This re-evaluation is needed to update the 1994 study, documenting changes in the design standards, reassessing socio-economic and environmental impacts, and comparing any new alternative options with the previously approved roadway improvement.

### Project Location & Existing Conditions

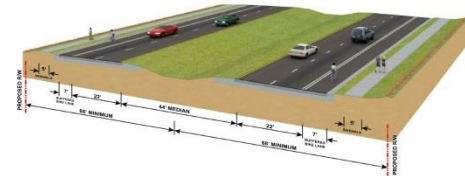
The FDOT is conducting this PD&E re-evaluation to improve mobility and safety along US 92 from east of I-4 to east of County Line Road, a distance of approximately 18.1 miles. This section of US 92 (SR 600) is currently a two-lane, undivided roadway with two 12-foot travel lanes and 4-foot outside paved shoulders. Sidewalks in the area are intermittent. Turn lanes have been provided at certain locations.

### Project Purpose and Need

US 92 is a major east-west arterial of regional significance that parallels Interstate I-4 and SR 574 (E Dr. Martin Luther King Jr. Blvd) in Hillsborough County. Within the study area, US 92 plays a significant role in connecting eastern Hillsborough County to the Tampa Bay region. The purpose of the proposed project is to accommodate future traffic growth and provide for faster emergency response and evacuation times. This corridor is projected to operate at level of service (LOS) F in the design year (2040) if no increase in capacity is provided. Other factors which support the need for the project include: regional connectivity, safety, consistency with transportation plans, emergency evacuation, and modal interrelationships.

### Recommended Build Alternative

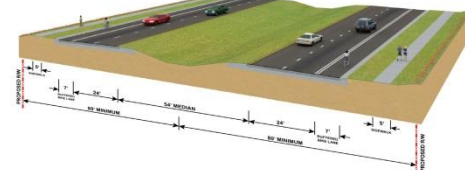
Recommended improvements include widening the existing roadway to four lanes (except for Mobley Street to Maryland Avenue), adding paved shoulders and improving sidewalks. Bicycle facilities and transit accommodations will be considered as part of the project. Proposed roadway typical sections include rural, suburban, and urban typical sections. The project was divided into 11 evaluation segments based on changes in land use and the proposed typical section in comparison with the land use and typical sections from the original PD&E Study. Five different typical section alternatives were recommended for the project in addition to the No-Build Alternative which was recommended for the project segment from Mobley Street to Maryland Avenue. The five typical section alternatives are listed below and the proposed action for each segment is described in the table on the next page.



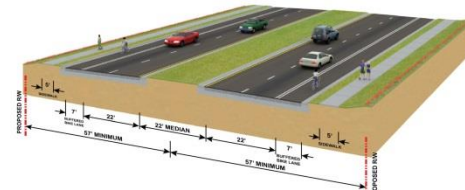
**Typical Section 1** - is a suburban roadway with two 11-foot travel lanes and a seven-foot buffered bike lane in each direction. This typical section requires a minimum of 136 feet of right-of-way and complies with the FDOT minimum 45 mph design speed.



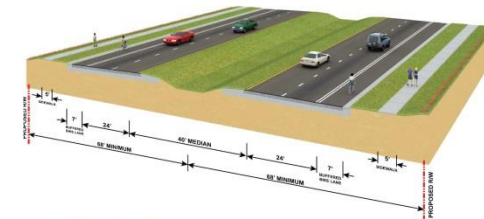
**Typical Section 2** - is a suburban roadway with two 11-foot travel lanes and a seven-foot buffered bike lane in each direction. This typical section complies with the FDOT minimum 45 mph design speed but would require a design variation if the roadway is expanded to six lanes in the future.



**Typical Section 3** - is a high speed suburban roadway with two 12-foot travel lanes and a seven-foot buffered bike lane in each direction. This typical section requires a minimum of 160 feet of right-of-way and complies with the FDOT minimum 50 mph design speed.



**Typical Section 4** - is an urban roadway with two 11-foot travel lanes and a seven-foot buffered bike lane in each direction. This typical section requires a minimum of 114 feet of right-of-way and complies with the FDOT minimum 45 mph design speed.



**Typical Section 5** - is a high speed suburban roadway with two 12-foot travel lanes, a five-foot sidewalk, and a seven-foot buffered bike lane in each direction. The travel lanes are separated by a 40-foot median with eight-foot inside shoulders with a 50 mph design speed.

### Project Impacts

The Recommended Build Alternative will meet future traffic needs and have minimal impact on the environment. Three resources within the Build Segments have been identified as being eligible for listing in the National Register of Historic Places. They are the Polk County Obelisk, Camp Knox Tourist Court Resource Group, and the Tomlin Middle School Resource Group. None of these are anticipated to be impacted. The hearing process will provide the hearing process participants an opportunity to comment on effects to these resources. Details of all project impacts separated by segment will be displayed at the public hearing.

Evaluation Segment	Portion of Segment	Build Typical Section	Build Alignment (Shifted North, Shifted South, or Centered)
1	Garden Lane to West of I-75 & East of I-75 to West of Mango Road	Typical Section 1	Garden Ln. to Falkenburg Rd.: North
	Just West of I-75 to Just East of I-75	Typical Section 2	Falkenburg Rd. to Mango Road: South
2	West of Mango Road to East of Mango Road	Typical Section 1	Mango Road Intersection: North
3	East of Mango Road to North Parsons Avenue	Typical Section 1	South
4	North Parsons Avenue to East of Crow Wing Drive	Typical Section 1	North
5	East of Crow Wing Drive to Castlewood Road	Typical Section 3	North
6	Castlewood Road to West of Gallagher Road	Typical Section 3	South
7	West of Gallagher Road to Lynn Oaks Circle	Typical Section 3	South
8	Lynn Oaks Circle to East of Bethlehem Road	Typical Section 3	Centered
9	East of Bethlehem Road to Edwards Street	Typical Section 3	E. of Bethlehem Rd. to Turkey Creek Rd.: North
	Edwards Street to Mobley Road	Typical Section 4	Turkey Creek Rd. to Woodrow Wilson St.: North Woodrow Wilson St. to Mobley St.: Centered
10	Mobley Street to Maryland Avenue	No-Build	No-Build
11	West of Park Road to County Line Road	Typical Section 5	North

### No-Build Alternative

The Recommended Build Alternative applies to the entire project length except for a segment from Mobley Street to Maryland Avenue. The No-Build Alternative applies to this segment. This re-evaluation concludes that this segment, Mobley Street to Maryland Avenue, will remain a No-Build Alternative. The No-Build Alternative assumes that no further improvements will be made to this segment of US 92 through the year 2040 except for routine maintenance and safety enhancements as required.

These improvements were completed for this section and met the intent of the original PD&E Study recommendation. This re-evaluation concludes that this segment, Mobley Street to Maryland Avenue, will remain a No-Build Alternative. The No-Build Alternative assumes that no further improvements will be made to this segment of US 92 through the year 2040 except for routine maintenance and safety enhancements as required.



## Newsletter

The newsletter was mailed on Tuesday, November 15, 2016 and distributed at the public hearing sessions.

The public hearing newsletter served as a property owner notice and an invitation to interested parties on the project mailing list.



**Public Hearing Session 2 Directions:**  
 Sheraton Tampa East Hotel | 10221 Princess Palm Avenue, Tampa, FL 33610 | 6:00 pm-8:00 pm

- **From Interstate 75**  
 From I-75 take Martin Luther King, Jr. Boulevard Exit, proceed west to Falkenburg Road, turn left onto Falkenburg Road, then turn left onto Princess Palm Avenue and proceed to the hotel.
- **From Broadway Ave**  
 Head east on E Broadway Avenue toward Queen Palm Drive, turn left onto N Falkenburg Road, then turn right at the 2nd cross street onto Princess Palm Avenue and proceed to the hotel.
- **From US 92**  
 Head west on US 92 toward N Falkenburg Road, turn left onto N Falkenburg Road, turn left onto FL 574 E/ E Dr. Martin Luther King, Jr. Boulevard, turn right onto Queen Palm Drive, then turn left onto Princess Palm Avenue and proceed to the hotel.
- **From Mango Road**  
 Head south on Mango Road, turn right onto FL 574 W/E Dr. Martin Luther King, Jr. Boulevard, turn left onto Queen Palm Drive, then turn left onto Princess Palm Avenue and proceed to the hotel.

A map with driving directions for the second hearing session was added to the newsletter to address previous navigation issues





# US 92 (SR 600)

From East of I-4 to East of County Line Road  
Project Development and Environment (PD&E) Reevaluation Study  
Work Program Item Segment No. 435749-1

Comment forms were included with the public hearing newsletter and were distributed at the public hearing session.

## Comment Form & Speaker Request Card



**US 92 (SR 600) PD&E STUDY RE-EVALUATION**  
From East of I-4 to East of County Line Road  
Hillsborough County, Florida  
WPI Segment Number 435749-1

### Public Hearing Comment Form

We encourage your comments regarding this project

\_\_\_\_\_  
\_\_\_\_\_  
\_\_\_\_\_  
\_\_\_\_\_  
\_\_\_\_\_  
\_\_\_\_\_  
\_\_\_\_\_  
\_\_\_\_\_  
\_\_\_\_\_  
\_\_\_\_\_  
\_\_\_\_\_  
\_\_\_\_\_  
\_\_\_\_\_  
\_\_\_\_\_  
\_\_\_\_\_  
\_\_\_\_\_  
\_\_\_\_\_  
\_\_\_\_\_  
\_\_\_\_\_  
\_\_\_\_\_  
\_\_\_\_\_

Name (Print): \_\_\_\_\_  
Address: \_\_\_\_\_  
City, State, Zip: \_\_\_\_\_  
Email: \_\_\_\_\_

#### PUBLIC HEARING SESSION ATTENDED:

- Session 1**  
Thursday, December 1, 2016  
HCC Trinkle Center
- Session 2**  
Tuesday, December 6, 2016  
Sheraton Tampa East Hotel

If you did not receive notice of the public hearing but would like to be included on the mailing list for this project, please check.  
NOTE: Please complete and place in the "Comments" box or mail Kirk Bogen, P.E., at the address on the back of this comment form. All comments postmarked by **Monday, December 19, 2016** will become part of the public hearing record and are available for viewing by the public and the media.  
Public participation is solicited without regard to race, color, national origin, age, sex, religion, disability or family status. Persons who require special accommodations under the Americans with Disabilities Act or persons who require translation services (free of charge) should contact Christopher Speese, Public Involvement Coordinator, at 813-975-6405 or 800-226-7220 at least seven working days in advance of the Public Hearing.

Fold

\_\_\_\_\_  
\_\_\_\_\_  
\_\_\_\_\_  
\_\_\_\_\_

Place Stamp Here

Kirk Bogen, PE, Environmental Management Engineer  
Florida Department of Transportation, District 7  
MS 7-500  
11201 N. McKinley Drive  
Tampa, Florida 33612-6456

Fold

Speaker request cards were available at the public hearing session.

**FDOT** FLORIDA DEPARTMENT OF TRANSPORTATION  
**US 92 PUBLIC HEARING**  
**REQUEST FOR OPPORTUNITY TO SPEAK**

Please print clearly

Date: \_\_\_\_\_

Name: \_\_\_\_\_

Address: \_\_\_\_\_

City \_\_\_\_\_ State \_\_\_\_\_ Zip Code \_\_\_\_\_

Organization (if applicable): \_\_\_\_\_

**Note:** In order to allow all persons the opportunity to speak, please limit your comments to 3 minutes. Public participation is solicited without regard to race, color, national origin, age, sex, religion, disability, or family status.



# US 92 (SR 600)

From East of I-4 to East of County Line Road  
Project Development and Environment (PD&E) Reevaluation Study  
Work Program Item Segment No. 435749-1



## Public Hearing Sign-In Sheets





# US 92 (SR 600)

From East of I-4 to East of County Line Road  
 Project Development and Environment (PD&E) Reevaluation Study  
 Work Program Item Segment No. 435749-1

## Public Hearing Sign-in Sheets (Session 1)

**1144** 11

**FDOT US 92 (SR 600)** From East of I-4 to East of County Line Road  
 Project Development and Environment (PD&E) Study Re-evaluation

Thursday, December 1, 2016  
 HCC Trinkle Center | 1206 N. Park Road, Plant City, FL 33563

**Public Hearing Sign-In**

NAME (Please Print)	Please Select One					MAILING ADDRESS (Please Print)
	Area Resident or Visitor	Elected Official	Federal/State Agency	Regional/Local Agency	Other	
1 Pat Comstock	<input checked="" type="checkbox"/>					5314 Lenoir Ct Plant City 33566
2 Sue Powers	<input checked="" type="checkbox"/>					13120 E US Hwy 92 Dover, FL 33527
3 Mat Mrs. Stephen Brauner	<input checked="" type="checkbox"/>					4555 Gallagher Rd. Dover, FL 33527
4 Mark Smith	<input checked="" type="checkbox"/>					4811 W 92
5 Hinc Rappold MD	<input checked="" type="checkbox"/>					4207 Hwy 92
6 NEAL/JOAN CARSAULTI	<input checked="" type="checkbox"/>					5601 W. US Hwy 92, PLANT CITY
7 Tatyana Austin, City of Plant City, Bay						3002 W. Reynolds St, Plant City, FL 33564
8 Louis H. Bergeman	<input checked="" type="checkbox"/>					Duver 351 Hwy 92, Seffner FL 33574
9 Jim Gufford	<input checked="" type="checkbox"/>					11 SAME
10 Ray Rehm	<input checked="" type="checkbox"/>					3603 B. + Day Rd PC. 33563

Public participation is solicited without regard to race, color, national origin, age, sex, religion, disability or family status. Persons who require special accommodations under the Americans with Disabilities Act or persons who require translation services (free of charge) should contact Christopher Speese, Public Involvement Coordinator, at (813) 975-6405 or (800) 296-7220 at least seven (7) working days in advance of the hearing.

12

**FDOT US 92 (SR 600)** From East of I-4 to East of County Line Road  
 Project Development and Environment (PD&E) Study Re-evaluation

Thursday, December 1, 2016  
 HCC Trinkle Center | 1206 N. Park Road, Plant City, FL 33563

**Public Hearing Sign-In**

NAME (Please Print)	Please Select One					MAILING ADDRESS (Please Print)
	Area Resident or Visitor	Elected Official	Federal/State Agency	Regional/Local Agency	Other	
1 William Reusser	<input checked="" type="checkbox"/>					4451 Gulliver Rd Dover
2 Barbara Harrington	<input checked="" type="checkbox"/>					4101 Castlewood Rd Seffner
3 Salinda Riebow	<input checked="" type="checkbox"/>					11722 E. U.S. Hwy. 92, Seffner
4 Roman + Ann Migowski	<input checked="" type="checkbox"/>					4821 Lynn Oaks CR Dover FL 33527
5 Deborah Deanna	<input checked="" type="checkbox"/>					1615 U.S. Hwy 92 EAST SEFFNER
6 Long Pearce	<input checked="" type="checkbox"/>					4604 W Hwy 92 W Plant City FL 33563
7						4604 W Hwy 92 W Plant City FL 33563
8 Mike Penach						4604 W Hwy 92 W Plant City FL 33563
9						13502 E US Hwy 92 Dover FL 33527
10 Nancy Fannin	<input checked="" type="checkbox"/>					2022 Pleasant Ave Dr. Plant City 33564

Public participation is solicited without regard to race, color, national origin, age, sex, religion, disability or family status. Persons who require special accommodations under the Americans with Disabilities Act or persons who require translation services (free of charge) should contact Christopher Speese, Public Involvement Coordinator, at (813) 975-6405 or (800) 296-7220 at least seven (7) working days in advance of the hearing.

12

**FDOT US 92 (SR 600)** From East of I-4 to East of County Line Road  
 Project Development and Environment (PD&E) Study Re-evaluation

Thursday, December 1, 2016  
 HCC Trinkle Center | 1206 N. Park Road, Plant City, FL 33563

**Public Hearing Sign-In**

NAME (Please Print)	Please Select One					MAILING ADDRESS (Please Print)
	Area Resident or Visitor	Elected Official	Federal/State Agency	Regional/Local Agency	Other	
1 Gary Upton						
2 Jim Scott	<input checked="" type="checkbox"/>					
3 James and Mary Masciadrelli	<input checked="" type="checkbox"/>					
4	<input checked="" type="checkbox"/>					
5 Anette Inesi	<input checked="" type="checkbox"/>					
6 Paul Friese	<input checked="" type="checkbox"/>					
7 Marjorie Boyd	<input checked="" type="checkbox"/>					518 Sportsman Pk. Dr. Seffner
8 Ted Brock	<input checked="" type="checkbox"/>					
9 Nomara Meeker	<input checked="" type="checkbox"/>					3702 W Baker St.
10 Duane + William Junigan	<input checked="" type="checkbox"/>					1003 Pleasant Acree Dr. PC. 33564

Public participation is solicited without regard to race, color, national origin, age, sex, religion, disability or family status. Persons who require special accommodations under the Americans with Disabilities Act or persons who require translation services (free of charge) should contact Christopher Speese, Public Involvement Coordinator, at (813) 975-6405 or (800) 296-7220 at least seven (7) working days in advance of the hearing.

11

**FDOT US 92 (SR 600)** From East of I-4 to East of County Line Road  
 Project Development and Environment (PD&E) Study Re-evaluation

Thursday, December 1, 2016  
 HCC Trinkle Center | 1206 N. Park Road, Plant City, FL 33563

**Public Hearing Sign-In**

NAME (Please Print)	Please Select One					MAILING ADDRESS (Please Print)
	Area Resident or Visitor	Elected Official	Federal/State Agency	Regional/Local Agency	Other	
1 MATTHEW J. RICHARDS	<input checked="" type="checkbox"/>					103 WEST WINDYBUSH ST. 33563
2 Alvin Hernandez	<input checked="" type="checkbox"/>					
3 Kay Vance	<input checked="" type="checkbox"/>					1150 Fletcher Ln 33563
4 Marbella Garcia	<input checked="" type="checkbox"/>					51503 Pasadena Dr.
5 Corlene Findley	<input checked="" type="checkbox"/>					
6 Andrew N. J.						504 W. Cypress St. Epsa
7 John Jones	<input checked="" type="checkbox"/>					P.O. Box 3627 Plant City FL 33563
8 Cindy Jones	<input checked="" type="checkbox"/>					
9 DAN + JACKIE FORTE	<input checked="" type="checkbox"/>					13526 E. US Hwy 92 DOVER FL 33527
10 Charles Link	<input checked="" type="checkbox"/>					1905 9420 OAK ST RIVERVIEW, FL 33578

Public participation is solicited without regard to race, color, national origin, age, sex, religion, disability or family status. Persons who require special accommodations under the Americans with Disabilities Act or persons who require translation services (free of charge) should contact Christopher Speese, Public Involvement Coordinator, at (813) 975-6405 or (800) 296-7220 at least seven (7) working days in advance of the hearing.

11

**FDOT US 92 (SR 600)** From East of I-4 to East of County Line Road  
 Project Development and Environment (PD&E) Study Re-evaluation

Thursday, December 1, 2016  
 HCC Trinkle Center | 1206 N. Park Road, Plant City, FL 33563

**Public Hearing Sign-In**

NAME (Please Print)	Please Select One					MAILING ADDRESS (Please Print)
	Area Resident or Visitor	Elected Official	Federal/State Agency	Regional/Local Agency	Other	
1 Lewis Garlisi	<input checked="" type="checkbox"/>					garlisi@gmail.com
2 Valerie Jackson	<input checked="" type="checkbox"/>					SRIBUFFY@hotmail.com
3 Deborah T. Lewis	<input checked="" type="checkbox"/>					virgewis@aol.com
4 Doreen Rose						
5 Christina Hall	<input checked="" type="checkbox"/>					
6 Ang + Pat Caltabiani						
7 William Brown	<input checked="" type="checkbox"/>					
8 Jose Iuso	<input checked="" type="checkbox"/>					
9 J.W. Falwood	<input checked="" type="checkbox"/>					
10 Charles Carpenter						

Public participation is solicited without regard to race, color, national origin, age, sex, religion, disability or family status. Persons who require special accommodations under the Americans with Disabilities Act or persons who require translation services (free of charge) should contact Christopher Speese, Public Involvement Coordinator, at (813) 975-6405 or (800) 296-7220 at least seven (7) working days in advance of the hearing.

10

**FDOT US 92 (SR 600)** From East of I-4 to East of County Line Road  
 Project Development and Environment (PD&E) Study Re-evaluation

Thursday, December 1, 2016  
 HCC Trinkle Center | 1206 N. Park Road, Plant City, FL 33563

**Public Hearing Sign-In**

NAME (Please Print)	Please Select One					MAILING ADDRESS (Please Print)
	Area Resident or Visitor	Elected Official	Federal/State Agency	Regional/Local Agency	Other	
1 FLOYD HALL						2918 CLYBURN DR PC 33564
2 James Junigan						2910 Jim Redman PKWY
3 Elizabeth Junigan						2910 Jim Redman PKWY
4 Marceia Center						13151 US Hwy 92, Dover
5 Bill Housdon						4626 FRITZKE RD
6 Tim Young						13443 East HWY 92
7 CLAY SCHAFFEL						
8 J.C. Kent						
9 Sam Shukla						10809 US Hwy 92
10 Jeni Filipkowski	<input checked="" type="checkbox"/>					1431 Cowart Rd PC 33564

Public participation is solicited without regard to race, color, national origin, age, sex, religion, disability or family status. Persons who require special accommodations under the Americans with Disabilities Act or persons who require translation services (free of charge) should contact Christopher Speese, Public Involvement Coordinator, at (813) 975-6405 or (800) 296-7220 at least seven (7) working days in advance of the hearing.





# US 92 (SR 600)

From East of I-4 to East of County Line Road  
 Project Development and Environment (PD&E) Reevaluation Study  
 Work Program Item Segment No. 435749-1

## Public Hearing Sign-in Sheets (Session 1)

(11)

**FDOT US 92 (SR 600)** From East of I-4 to East of County Line Road  
 Project Development and Environment (PD&E) Study Re-evaluation

Thursday, December 1, 2016  
 HCC Trinkle Center | 1206 N. Park Road, Plant City, FL 33563

**Public Hearing Sign-in**

NAME (Please Print)	Please Select One					MAILING ADDRESS (Please Print)
	Area Resident or Visitor	Elected Official	Federal/State Agency	Regional/Local Agency	Other	
1 Susie Wells						13491 US 92 Dover FL 33527
2 Cheryl & Red Boles						2814 US Hwy 92 East PC 33564
3 Lisa Montgomery						4506 Beola Rd, Dover FL 33527
4 Karlene Whidden						711 N Park Rd Plant City
5 Jerry Whidden						
6 Muel Poppert						2703 Laurel Oak Dr.
7 Kolenka Kudarcic						5801 W. Cypress St. 33607
8 Sam Sidiqi						2280-2290 Hwy 92 E
9 Sandy Sidiqi						" " " "
10 Donald E. Ozer						PO Box 189 Sycamore FL 33564

Public participation is solicited without regard to race, color, national origin, age, sex, religion, disability or family status. Persons who require special accommodations under the Americans with Disabilities Act or persons who require translation services (free of charge) should contact Christopher Spence, Public Involvement Coordinator, at (813) 915-6405 or (800) 226-7220 at least seven (7) working days in advance of the hearing.

(11)

**FDOT US 92 (SR 600)** From East of I-4 to East of County Line Road  
 Project Development and Environment (PD&E) Study Re-evaluation

Thursday, December 1, 2016  
 HCC Trinkle Center | 1206 N. Park Road, Plant City, FL 33563

**Public Hearing Sign-in**

NAME (Please Print)	Please Select One					MAILING ADDRESS (Please Print)
	Area Resident or Visitor	Elected Official	Federal/State Agency	Regional/Local Agency	Other	
1 Sonya Alex						6532 Stafford Rd PL 33565
2 CJ BARKES						3616 HARDEN BLVD #316 LAKEWOOD 33505
3 EARL COLEMAN						1009 US92 W Seffner FLA
4 Ana Chico Cruz						3300 US Hwy 92 E Plant City
5 Luciano G Roman						3300 US Hwy 92 E Plant City
6 Dave Buegens						1802 Spooner Dr, P.C.
7 PAOLO VARGAS						13130 DONK GARDEN DRIVE DOVER FL 33527
8 Randy Beathiz						3510 US Hwy 92 E Plant City
9 Jason Fernandes						401 Down Pine Dr. Seffner FL 33584
10 Gary Bullock						409 Down Pine Dr. Seffner, FL 33584

Public participation is solicited without regard to race, color, national origin, age, sex, religion, disability or family status. Persons who require special accommodations under the Americans with Disabilities Act or persons who require translation services (free of charge) should contact Christopher Spence, Public Involvement Coordinator, at (813) 915-6405 or (800) 226-7220 at least seven (7) working days in advance of the hearing.

(12)

**FDOT US 92 (SR 600)** From East of I-4 to East of County Line Road  
 Project Development and Environment (PD&E) Study Re-evaluation

Thursday, December 1, 2016  
 HCC Trinkle Center | 1206 N. Park Road, Plant City, FL 33563

**Public Hearing Sign-in**

NAME (Please Print)	Please Select One					MAILING ADDRESS (Please Print)
	Area Resident or Visitor	Elected Official	Federal/State Agency	Regional/Local Agency	Other	
1 Connie Warefine Setney						
2 Delonda & Clarence Matly						
3 John Helton						
4 Emily Topper						
5 Teresa & William Lyant	X					
6 Robert McNamee	X					
7 Edgar H. Letter	X					
8 Georgene Bender	✓					
9 Dennis Bender	✓					
10 Joseph Herrmann	✓					

Public participation is solicited without regard to race, color, national origin, age, sex, religion, disability or family status. Persons who require special accommodations under the Americans with Disabilities Act or persons who require translation services (free of charge) should contact Christopher Spence, Public Involvement Coordinator, at (813) 915-6405 or (800) 226-7220 at least seven (7) working days in advance of the hearing.

(10)

**FDOT US 92 (SR 600)** From East of I-4 to East of County Line Road  
 Project Development and Environment (PD&E) Study Re-evaluation

Thursday, December 1, 2016  
 HCC Trinkle Center | 1206 N. Park Road, Plant City, FL 33563

**Public Hearing Sign-in**

NAME (Please Print)	Please Select One					MAILING ADDRESS (Please Print)
	Area Resident or Visitor	Elected Official	Federal/State Agency	Regional/Local Agency	Other	
1 Karine Dean	✓					415 Down Pine Drive
2 Pascale Dean	✓					" "
3 BOB DUBE	✓					5407 Anna Dr.
4 Jean Sprenth	✓					3120 Hwy 92 E P.C.
5 Steve Burnett	✓					3120 Hwy 92 E PC 33566
6 Robert Alan						3602 Hwy 92 E
7 Wonda Hansen	✓					3602 Hwy 92 E + 3808
8 Greg Jewell	✓					13261 U.S. Hwy 92
9 Lin Meyer	✓					
10 Jim Little					✓	10044 N. Bolshoy #7 201 11499 FL 33618

Public participation is solicited without regard to race, color, national origin, age, sex, religion, disability or family status. Persons who require special accommodations under the Americans with Disabilities Act or persons who require translation services (free of charge) should contact Christopher Spence, Public Involvement Coordinator, at (813) 915-6405 or (800) 226-7220 at least seven (7) working days in advance of the hearing.

(10)

**FDOT US 92 (SR 600)** From East of I-4 to East of County Line Road  
 Project Development and Environment (PD&E) Study Re-evaluation

Thursday, December 1, 2016  
 HCC Trinkle Center | 1206 N. Park Road, Plant City, FL 33563

**Public Hearing Sign-in**

NAME (Please Print)	Please Select One					MAILING ADDRESS (Please Print)
	Area Resident or Visitor	Elected Official	Federal/State Agency	Regional/Local Agency	Other	
1 Greg Pitcher	✓					10716 E US Hwy 92 Tampa 33600
2 Cynthia Godby	✓					
3 W.T. Godby	✓					
4 TARK ARAJDI ESQ					✓	283 Crema Road Blvd 111 Altamonte Springs FL
5 PIER NAVARRO					✓	1961 W 7TH ST APOPKA FL 34989
6 Crystal Shippee	✓					4804 Lynn Daks Cir Dover 33527
7 HEATHER RILEY	✓					13174 EUS Hwy 92 DOVER 33527
8 FAYE GRIFFIN	✓					" "
9 Deanna Brewer	✓					13175 HWY 92 DOVER
10 ROGER WYATT	✓					13858 E US Hwy 92, DOVER

Public participation is solicited without regard to race, color, national origin, age, sex, religion, disability or family status. Persons who require special accommodations under the Americans with Disabilities Act or persons who require translation services (free of charge) should contact Christopher Spence, Public Involvement Coordinator, at (813) 915-6405 or (800) 226-7220 at least seven (7) working days in advance of the hearing.

(11)

**FDOT US 92 (SR 600)** From East of I-4 to East of County Line Road  
 Project Development and Environment (PD&E) Study Re-evaluation

Thursday, December 1, 2016  
 HCC Trinkle Center | 1206 N. Park Road, Plant City, FL 33563

**Public Hearing Sign-in**

NAME (Please Print)	Please Select One					MAILING ADDRESS (Please Print)
	Area Resident or Visitor	Elected Official	Federal/State Agency	Regional/Local Agency	Other	
1 James & Janice Harwood	✓					4902 Hwy 92 W. Plant City FL 33563
2 Leslie Rizzo				✓		1400 N Dale Mabry Hwy, Sec 201, Tampa FL 33608
3 Esther Zandgran						3710 Hwy 92 EAST PLANT CITY FL 33563
4 William Robinson						4002 US HWY 92 W PLANT CITY FL 33563
5 Sheri Dold aka Rodwater LLC	✓					PO Box 805 Plant City FL 33564
6 Alexander Brink Langston	✓					1215 Mcintosh Rd Thonotosassa FL 33592
7 ANTHONY ZAPPALÀ	✓					229 King Surrey Ct Valrico FL 33596
8 Ray & Julie Young	✓					4808 Booth Rd Plant City, FL 33565

Public participation is solicited without regard to race, color, national origin, age, sex, religion, disability or family status. Persons who require special accommodations under the Americans with Disabilities Act or persons who require translation services (free of charge) should contact Christopher Spence, Public Involvement Coordinator, at (813) 915-6405 or (800) 226-7220 at least seven (7) working days in advance of the hearing.





# US 92 (SR 600)

From East of I-4 to East of County Line Road  
 Project Development and Environment (PD&E) Reevaluation Study  
 Work Program Item Segment No. 435749-1

## Public Hearing Sign-in Sheets (Session 1)

3

FDOT US 92 (SR 600) From East of I-4 to East of County Line Road Project Development and Environment (PD&E) Study Re-evaluation						
Thursday, December 1, 2016 HCC Thinkle Center   1206 N. Park Road, Plant City, FL 33563						
Public Hearing Sign-In						
NAME (Please Print)	Please Select One					MAILING ADDRESS (Please Print)
	Area Resident or Visitor	Elected Official	Federal/State Agency	Regional/Local Agency	Other	
1 Estela Palma						
2 Fede Zelaya						
3 Esperanza Delagarza	✓					
4						
5						
6						
7						
8						
9						
10						

Public participation is solicited without regard to race, color, national origin, age, sex, religion, disability or family status. Persons who require special accommodations under the Americans with Disabilities Act or persons who require translation services (free of charge) should contact Christopher Spence, Public Involvement Coordinator, at (813) 915-6401 or (888) 226-7228 at least seven (7) working days in advance of the hearing.

9

FDOT US 92 (SR 600) From East of I-4 to East of County Line Road Project Development and Environment (PD&E) Study Re-evaluation						
Thursday, December 1, 2016 HCC Thinkle Center   1206 N. Park Road, Plant City, FL 33563						
Public Hearing Sign-In						
NAME (Please Print)	Please Select One					MAILING ADDRESS (Please Print)
	Area Resident or Visitor	Elected Official	Federal/State Agency	Regional/Local Agency	Other	
1 Aida Jewell	✓					
2 Jason Ryan	✓					
3 Miguel Quirino	✓					3706 Moores Lake Rd, Dover, FL 33527
4 Luciano Palma	✓					13244 E US HWY 92 DOVER FL 33527
5 Aurelio Martinez	✓					11719 US 92 E Seffner FL 33584
6 Leonardo Arenas						3306 Hwy 92 E Plant City FL 33566
7 RICHARD RANCK				X		607 E KENNEDY 22-5 PKR TPA FL 33602
8 JASON Carlisle	✓					13575 Hwy 92 E. Dover, FL 33527
9 Jerry Carlisle	✓					13575 Hwy 92 E Dover FL 33527
10						

Public participation is solicited without regard to race, color, national origin, age, sex, religion, disability or family status. Persons who require special accommodations under the Americans with Disabilities Act or persons who require translation services (free of charge) should contact Christopher Spence, Public Involvement Coordinator, at (813) 915-6401 or (888) 226-7228 at least seven (7) working days in advance of the hearing.





# US 92 (SR 600)

From East of I-4 to East of County Line Road  
 Project Development and Environment (PD&E) Reevaluation Study  
 Work Program Item Segment No. 435749-1

## Public Hearing Sign-in Sheets (Session 1)

FDOT US 92 (SR 600) From East of I-4 to East of County Line Road Project Development and Environment (PD&E) Study Re-evaluation	
Thursday, December 1, 2016 HCC Trinkle Center   1206 N. Park Road, Plant City, FL 33563	
Public Hearing Sign-In	STAFF ONLY
NAME (Please Print)	DEPARTMENT (Please Print)
1 Lori Marable	Planning - SIS
2 Chris Speese	FDOT - Planning
3 Ed McKinney	FDOT PLUENO
4 Lillian Escalera	FDOT EMO
5 Zenia Gallo	FDOT ROW - Relocation
6 Craig Fox	FDOT Proj Man
7 David Coleman	Inwood
8 ANDY DEWITT	INWOOD CONSULTING ENG.
9 Kirk Bogen	FDOT EMO
10 Robin Rhinesmith	FDOT EMO

Public participation is solicited without regard to race, color, national origin, age, sex, religion, disability or family status. Persons who require special accommodations under the Americans with Disabilities Act or persons who require translation service (free of charge) should contact Christopher Speese, Public Involvement Coordinator, at (813) 975-6405 or (800) 226-7220 at least seven (7) working days in advance of the hearing.

FDOT US 92 (SR 600) From East of I-4 to East of County Line Road Project Development and Environment (PD&E) Study Re-evaluation	
Thursday, December 1, 2016 HCC Trinkle Center   1206 N. Park Road, Plant City, FL 33563	
Public Hearing Sign-In	STAFF ONLY
NAME (Please Print)	DEPARTMENT (Please Print)
1 Nicole Selby	D7 DOT
2 JACKIE FERNANDEZ	"
3 John Foley	D7 FDOT
4 LINDSAY BAUMAISTER	KBE
5	
6	
7	
8	
9	
10	

Public participation is solicited without regard to race, color, national origin, age, sex, religion, disability or family status. Persons who require special accommodations under the Americans with Disabilities Act or persons who require translation service (free of charge) should contact Christopher Speese, Public Involvement Coordinator, at (813) 975-6405 or (800) 226-7220 at least seven (7) working days in advance of the hearing.





# US 92 (SR 600)

From East of I-4 to East of County Line Road  
 Project Development and Environment (PD&E) Reevaluation Study  
 Work Program Item Segment No. 435749-1

## Public Hearing Sign-in Sheets (Session 2)

**FDOT US 92 (SR 600)** From East of I-4 to East of County Line Road  
 Project Development and Environment (PD&E) Study Re-evaluation

Tuesday, December 6, 2016  
 Sheraton Tampa East Hotel | 10221 Princess Palm Avenue, Tampa, FL 33610

**Public Hearing Sign-In**

NAME (Please Print)	Please Select One					MAILING ADDRESS (Please Print)
	Area Resident or Visitor	Elected Official	Federal/State Agency	Regional/Local Agency	Other	
John K. Connolly	Resident					10829 Hwy 92 E. Seffner FL 33584
Patricia T. Williams	Res					319 Down Pine Dr Seffner FL 33584
Phil Menke	Visitor					
Stacy Pendergast	Res					
MELANIE HIGGINS	Visitor					mehiggins@equatortech.com
Francois Vianini	✓					
Misty Vianini	✓					
Salvatore Succi	Resident					206-208 Hwy 92 - W Seffner
Joseph R. Coker	Res					
José DelaFuente						4022 Lake Dr Seffner

**FDOT US 92 (SR 600)** From East of I-4 to East of County Line Road  
 Project Development and Environment (PD&E) Study Re-evaluation

Tuesday, December 6, 2016  
 Sheraton Tampa East Hotel | 10221 Princess Palm Avenue, Tampa, FL 33610

**Public Hearing Sign-In**

NAME (Please Print)	Please Select One					MAILING ADDRESS (Please Print)
	Area Resident or Visitor	Elected Official	Federal/State Agency	Regional/Local Agency	Other	
Pam Conway	✓					809 20th Ave WES Palmto 71 34221
Charles Strattan					✓	215 S. Manatee St + 700 Tallahassee FL 32312
Sharon L. Lyons	✓					4283 US Hwy 92 W F.C. Fla 33563
JAMES CASTELLO	✓					13613 E HWY 92 DOVER, FL 33527
Levora Miller	✓					5501 Daphniston Rd Tampa FL 33610
Ashley Johnson	✓					409 DOWN PINE DR. SEFFNER, FL 33584
Amar Webb			✓			10880 Duff St NE St Petersburg
RICHARD PARRHAM					✓	1044 N DAVE MARLEY HWY 8201 TAMPA, FL 33610
Wade Reynolds				✓		601 E Kennedy Blvd 18th fl Tampa FL 33605
Leonardo Alvarez						3306 Hwy 92 E Plant City FL 33566

**FDOT US 92 (SR 600)** From East of I-4 to East of County Line Road  
 Project Development and Environment (PD&E) Study Re-evaluation

Tuesday, December 6, 2016  
 Sheraton Tampa East Hotel | 10221 Princess Palm Avenue, Tampa, FL 33610

**Public Hearing Sign-In**

NAME (Please Print)	Please Select One					MAILING ADDRESS (Please Print)
	Area Resident or Visitor	Elected Official	Federal/State Agency	Regional/Local Agency	Other	
Brenda Reinke	✓					
BRIAN A. McEWAN	✓					
Robert Shver	✓					
Shawn Coker	✓					9906 E US Hwy 92 33610
Sony May						
Bob HARRIGAN	✓					19113 CYPRESS GREEN DR LUTE FL 33559
Tezoe Hawkins	✓					5805 AMBROSE CT TAMPA, FL
Miguel Durino	✓					63706 Moores Lake Rd Dover, FL 33527
Ammy Kreide	✓					8303 Dorianfield Ct. Odessa, FL 33556
NORBERT MOERLE	✓					10341 E Hwy 92 Tampa FL 33610

**FDOT US 92 (SR 600)** From East of I-4 to East of County Line Road  
 Project Development and Environment (PD&E) Study Re-evaluation

Tuesday, December 6, 2016  
 Sheraton Tampa East Hotel | 10221 Princess Palm Avenue, Tampa, FL 33610

**Public Hearing Sign-In**

NAME (Please Print)	Please Select One					MAILING ADDRESS (Please Print)
	Area Resident or Visitor	Elected Official	Federal/State Agency	Regional/Local Agency	Other	
Sam Shukla	Resident					10809 US Hwy 92 Tampa FL 33610
Troy Salisbury					✓	Hillsborough County Gov't
Jill + Jonathan Moreno	✓					1426 Shell Flower Dr. Brandon, FL 33511
Jane Charpentier	✓					417 Down Pine Dr Seffner, FL 33584
Johnnie Lorraine Barry	✓					9912 East US Highway 92 Tampa FL 33610
Marion Tru Springer	✓					5926 Hwy 92 W Plant City FL 33566
Antonio Brooks	✓					819 DOWN PINE DR SEFFNER, FL 33584
Paul Bar						
Bill Rovey	✓					3104 SR594 Plant City, FL 33563
GORDON HARRIS	✓					4508 SWINGER RD DOVER, FL 33527

**FDOT US 92 (SR 600)** From East of I-4 to East of County Line Road  
 Project Development and Environment (PD&E) Study Re-evaluation

Tuesday, December 6, 2016  
 Sheraton Tampa East Hotel | 10221 Princess Palm Avenue, Tampa, FL 33610

**Public Hearing Sign-In**

NAME (Please Print)	Please Select One					MAILING ADDRESS (Please Print)
	Area Resident or Visitor	Elected Official	Federal/State Agency	Regional/Local Agency	Other	
Uly Schafy						110005 E Hwy 92 Tampa 33610
Norman H. Linsen						
MARK BAISS (BANKING NV)				✓		10716 EAST US HWY 92 TAMPA 33610
Melbourne Hymariou Smith	✓					18626 N. 30th St Lut 2
Joris W. Cooper	✓					1411 NORTHWOOD DR. SEFFNER, FL
Fernin GADWA	✓					
Paul Churney						
Martin Bezdek	✓					PO Box 320333 Tpa, FL 33629
Brett Goda	✓					
Mike Was	✓					13055 McIntosh Lakes Ln 33552

**FDOT US 92 (SR 600)** From East of I-4 to East of County Line Road  
 Project Development and Environment (PD&E) Study Re-evaluation

Tuesday, December 6, 2016  
 Sheraton Tampa East Hotel | 10221 Princess Palm Avenue, Tampa, FL 33610

**Public Hearing Sign-In**

NAME (Please Print)	Please Select One					MAILING ADDRESS (Please Print)
	Area Resident or Visitor	Elected Official	Federal/State Agency	Regional/Local Agency	Other	
Michael Adams					✓	
Cherlene Adewunmi					✓	
Ruben Vianini					✓	
Chad Tsom + 2						
M/M/H. Bufason + 1	✓					
Christy Burbage	✓					
Susan Franco	✓					
Steve PATAPOFF	✓					
JON REINKE	✓					





# US 92 (SR 600)

From East of I-4 to East of County Line Road  
 Project Development and Environment (PD&E) Reevaluation Study  
 Work Program Item Segment No. 435749-1

## Public Hearing Sign-in Sheets (Session 2)

**FDOT US 92 (SR 600)** From East of I-4 to East of County Line Road  
 Project Development and Environment (PD&E) Study Re-evaluation

Tuesday, December 6, 2016  
 Sheraton Tampa East Hotel | 10221 Princess Palm Avenue, Tampa, FL 33610

**Public Hearing Sign-In**

NAME (Please Print)	Please Select One					MAILING ADDRESS (Please Print)
	Area Resident or Visitor	Elected Official	Federal/State Agency	Regional/Local Agency	Other	
1. JAN Bebbington	<input checked="" type="checkbox"/>					4122 US 92 East Plant 33566 City
2. Veronica Bouley	<input checked="" type="checkbox"/>					
3. Charles Carpenter Sr.						
4. JOE WDS	<input checked="" type="checkbox"/>					10805 E US 92
5. Debbie Was	<input checked="" type="checkbox"/>					
6. JEANIE BURNETT	<input checked="" type="checkbox"/>					
7. STEVE BURNETT	<input checked="" type="checkbox"/>					
8. GREG MOORE	<input checked="" type="checkbox"/>					9816 US Hwy 92 E
9. Eddie HUGUE-GG	<input checked="" type="checkbox"/>					12915 US 92 E Dover IA 33567
10. Mike Jackson	<input checked="" type="checkbox"/>					11307 E US Hwy 92 Sofron FL 33584

Public participation is solicited without regard to race, color, national origin, age, sex, religion, disability or family status. Persons who require special accommodations under the Americans with Disabilities Act or persons who require translation services (free of charge) should contact Christopher Speese, Public Involvement Coordinator, at (813) 975-6405 or (800) 226-7225 at least seven (7) working days in advance of the hearing.

**FDOT US 92 (SR 600)** From East of I-4 to East of County Line Road  
 Project Development and Environment (PD&E) Study Re-evaluation

Tuesday, December 6, 2016  
 Sheraton Tampa East Hotel | 10221 Princess Palm Avenue, Tampa, FL 33610

**Public Hearing Sign-In**

NAME (Please Print)	Please Select One					MAILING ADDRESS (Please Print)
	Area Resident or Visitor	Elected Official	Federal/State Agency	Regional/Local Agency	Other	
1. Eddy Morgan	<input checked="" type="checkbox"/>					13722 Meadow Oaks Dr Dover
2. JOHN Patricia				<input checked="" type="checkbox"/>		HILLSBOROUGH COUNTY
3. MIKE MORETTINI	<input checked="" type="checkbox"/>					VALRICO, FL.
4. CHAD BOFFIS	<input checked="" type="checkbox"/>					4800 VENETIAN BLVD NE S. PISC 33703
5. Cornelio Vazquez						
6. Debby Senior	<input checked="" type="checkbox"/>					P.O. Box 402 Brandon FL 33529
7. Sari Prance						5440 Trail Dr
8. Jennifer Miley	<input checked="" type="checkbox"/>					
9. Amy Peters	<input checked="" type="checkbox"/>					204 HOLLAND AVE Temple Terrace FL 33617
10. Daniel Peters	<input checked="" type="checkbox"/>					204 HOLLAND AVE Temple Terrace, FL 33617

Public participation is solicited without regard to race, color, national origin, age, sex, religion, disability or family status. Persons who require special accommodations under the Americans with Disabilities Act or persons who require translation services (free of charge) should contact Christopher Speese, Public Involvement Coordinator, at (813) 975-6405 or (800) 226-7225 at least seven (7) working days in advance of the hearing.

**FDOT US 92 (SR 600)** From East of I-4 to East of County Line Road  
 Project Development and Environment (PD&E) Study Re-evaluation

Tuesday, December 6, 2016  
 Sheraton Tampa East Hotel | 10221 Princess Palm Avenue, Tampa, FL 33610

**Public Hearing Sign-In**

NAME (Please Print)	Please Select One					MAILING ADDRESS (Please Print)
	Area Resident or Visitor	Elected Official	Federal/State Agency	Regional/Local Agency	Other	
1. Bruce Duncan	<input checked="" type="checkbox"/>					10909 US 92E Sofron 7135584
2. Richard Thomas +1	<input checked="" type="checkbox"/>					9806 Hwy 92 EAST
3. Margarita Delafuente	<input checked="" type="checkbox"/>					13860 EUS Hwy 92
4. Jess Callister	<input checked="" type="checkbox"/>					1004 Meadow Oaks Dr Dover
5. Leslie Russo				<input checked="" type="checkbox"/>		10014 N. Dale Mabry Hwy Ste 202 Tampa FL 33629
6. Kara Carl	<input checked="" type="checkbox"/>					903 Gambit New Jeff Hl 33584
7. Jack King	<input checked="" type="checkbox"/>					177 S. HARGREAVE ISLAND BLVD. SUITE 600 TAMPA 33602
8. Ken Carranza	<input checked="" type="checkbox"/>					5925 Hwy 92 West
9. Lynn Wiles	<input checked="" type="checkbox"/>					3706 Hwy 92 East
10. W. Plagos Morgan	<input checked="" type="checkbox"/>					13722 Meadow Oaks Dr

Public participation is solicited without regard to race, color, national origin, age, sex, religion, disability or family status. Persons who require special accommodations under the Americans with Disabilities Act or persons who require translation services (free of charge) should contact Christopher Speese, Public Involvement Coordinator, at (813) 975-6405 or (800) 226-7225 at least seven (7) working days in advance of the hearing.

**FDOT US 92 (SR 600)** From East of I-4 to East of County Line Road  
 Project Development and Environment (PD&E) Study Re-evaluation

Tuesday, December 6, 2016  
 Sheraton Tampa East Hotel | 10221 Princess Palm Avenue, Tampa, FL 33610

**Public Hearing Sign-In**

NAME (Please Print)	Please Select One					MAILING ADDRESS (Please Print)
	Area Resident or Visitor	Elected Official	Federal/State Agency	Regional/Local Agency	Other	
1. Michael Casagrande						4022 Lake Dr Dover FL 33584
2.						
3.						
4.						
5.						
6.						
7.						
8.						
9.						
10.						

Public participation is solicited without regard to race, color, national origin, age, sex, religion, disability or family status. Persons who require special accommodations under the Americans with Disabilities Act or persons who require translation services (free of charge) should contact Christopher Speese, Public Involvement Coordinator, at (813) 975-6405 or (800) 226-7225 at least seven (7) working days in advance of the hearing.





# US 92 (SR 600)

From East of I-4 to East of County Line Road  
 Project Development and Environment (PD&E) Reevaluation Study  
 Work Program Item Segment No. 435749-1

## Public Hearing Sign-in Sheets (Session 2)

**FDOT** **US 92 (SR 600)** From East of I-4 to East of County Line Road  
 Project Development and Environment (PD&E) Study Re-evaluation

Tuesday, December 6, 2016  
 Sheraton Tampa East Hotel | 10221 Princess Palm Avenue, Tampa, FL 33610

**Public Hearing Sign-In** **STAFF ONLY**

	NAME (Please Print)	DEPARTMENT (Please Print)
1	Pat Berg	Acquisition
2	Lillian E. Escalera	EMO
3	Stephen Benson	Liason
4	Zenia Gallo	FDOT - Relocation
5	Kirk Bogen	FDOT - EMO
6	Chris Speese	FDOT
7	Nicole Selby	FDOT
8	Robin Rhoadsmith	FDOT
9	John Foley	FDOT
10	Maig Fox	FDOT

Public participation is solicited without regard to race, color, national origin, age, sex, religion, disability or family status. Persons who require special accommodations under the Americans with Disabilities Act or persons who require translation service (free of charge) should contact Christopher Speese, Public Involvement Coordinator, at (813) 975-6405 or (800) 226-7220 at least seven (7) working days in advance of the hearing.

**FDOT** **US 92 (SR 600)** From East of I-4 to East of County Line Road  
 Project Development and Environment (PD&E) Study Re-evaluation

Tuesday, December 6, 2016  
 Sheraton Tampa East Hotel | 10221 Princess Palm Avenue, Tampa, FL 33610

**Public Hearing Sign-In** **STAFF ONLY**

	NAME (Please Print)	DEPARTMENT (Please Print)
1	LINDSAY BAUMAISTER	KBE
2	DAVID BOTELLO	FDOT
3		
4		
5		
6		
7		
8		
9		
10		

Public participation is solicited without regard to race, color, national origin, age, sex, religion, disability or family status. Persons who require special accommodations under the Americans with Disabilities Act or persons who require translation service (free of charge) should contact Christopher Speese, Public Involvement Coordinator, at (813) 975-6405 or (800) 226-7220 at least seven (7) working days in advance of the hearing.



# US 92 (SR 600)

From East of I-4 to East of County Line Road  
Project Development and Environment (PD&E) Reevaluation Study  
Work Program Item Segment No. 435749-1



## Display Graphics





# US 92 (SR 600)

From East of I-4 to East of County Line Road  
Project Development and Environment (PD&E) Reevaluation Study  
Work Program Item Segment No. 435749-1

## Display Boards



### US 92 (SR 600)

From East of I-4 to East of County Line Road  
Project Development and Environment (PD&E) Study Re-evaluation  
Work Program Item Segment No. 435749-1

# WELCOME

to the Public Hearing for the SR 600 (US 92) from East of I-4 to East of County Line Road  
Project Development and Environment (PD&E) Study Re-evaluation



#### HEARING DATES & LOCATIONS

**Thursday, December 1, 2016**  
5:30 p.m. - 7:30 p.m. Open House  
6:30 p.m. Formal Presentation

HCC Trinkle Center  
1206 N. Park Road  
Plant City, FL 33563

**Tuesday, December 6, 2016**  
6:00 p.m. - 8:00 p.m. Open House  
7:00 p.m. Formal Presentation

Sheraton Tampa East Hotel  
10221 Princess Palm Avenue  
Tampa, FL 33610

FLORIDA DEPARTMENT OF TRANSPORTATION  
DISTRICT SEVEN  
HILLSBOROUGH COUNTY

PUBLIC HEARING  
HCC TRINKLE CENTER - DECEMBER 1, 2016  
SHERATON TAMPA EAST HOTEL - DECEMBER 6, 2016



### US 92 (SR 600)

From East of I-4 to East of County Line Road  
Project Development and Environment (PD&E) Study Re-evaluation  
Work Program Item Segment No. 435749-1

#### SECTION 106

Section 106 of the National Historic Preservation Act of 1966 (NHPA) requires federal agencies to consider the effects of projects they carry out, approve, or fund on historic properties. There are three historic resources shown on the map below that are within the build segments and have been identified as eligible for the National Register of Historic Places. None of these historic resources are anticipated to be impacted by this project.



A Draft Section 106 Case Study Report is Available Tonight

FLORIDA DEPARTMENT OF TRANSPORTATION  
DISTRICT SEVEN  
HILLSBOROUGH COUNTY

PUBLIC HEARING  
HCC TRINKLE CENTER - DECEMBER 1, 2016  
SHERATON TAMPA EAST HOTEL - DECEMBER 6, 2016





# US 92 (SR 600)

From East of I-4 to East of County Line Road  
 Project Development and Environment (PD&E) Reevaluation Study  
 Work Program Item Segment No. 435749-1

## Display Boards



### US 92 (SR 600)

From East of I-4 to East of County Line Road  
 Project Development and Environment (PD&E) Study Re-evaluation  
 Work Program Item Segment No. 435749-1

#### PROJECT SCHEDULE



#### Community Outreach

A continuous community outreach process is integrated into every step of the project to ensure that the corridor residents, businesses, the traveling public and other interested parties have meaningful participation in the process.

FLORIDA DEPARTMENT OF TRANSPORTATION  
 DISTRICT SEVEN  
 HILLSBOROUGH COUNTY

PUBLIC HEARING  
 HCC TRINKLE CENTER - DECEMBER 1, 2016  
 SHERATON TAMPA EAST HOTEL - DECEMBER 6, 2016



### US 92 (SR 600)

From East of I-4 to East of County Line Road  
 Project Development and Environment (PD&E) Study Re-evaluation  
 Work Program Item Segment No. 435749-1

#### US 92 MATRIX EVALUATION FROM I-4 TO COUNTY LINE ROAD

Evaluation Criteria	1994 POSE Preferred Alignment	Segment 1 From east of I-4 Garden Lane to east of CR 379		Segment 2 From east of CR 379 to east of CR 379 Avenue		Segment 3 From east of CR 379 Avenue to north of Park Drive		Segment 4 From north of Park Drive to east of Crow Wing Drive		Segment 5 From east of Crow Wing Drive to east of Colburn Road		Segment 6 From Colburn Road to west of Gallagher Road		Segment 7 From west of Gallagher Road to Loop 666 Circle		Segment 8 From Loop 666 Circle to east of Bubbala Road		Segment 9 From east of Bubbala Road to Bubbala Street		Segment 10 From Bubbala Street to Park Road		Segment 11 From Park Road to east of County Line Road	
		Original POSE Study Alignment North-South	Central POSE Study Alignment North-South	Original POSE Study Alignment North-South	Central POSE Study Alignment North-South	Original POSE Study Alignment North-South	Central POSE Study Alignment North-South	Original POSE Study Alignment North-South	Central POSE Study Alignment North-South	Original POSE Study Alignment North-South	Central POSE Study Alignment North-South	Original POSE Study Alignment North-South	Central POSE Study Alignment North-South	Original POSE Study Alignment North-South	Central POSE Study Alignment North-South	Original POSE Study Alignment North-South	Central POSE Study Alignment North-South	Original POSE Study Alignment North-South	Central POSE Study Alignment North-South	Original POSE Study Alignment North-South	Central POSE Study Alignment North-South		
<b>Business Impacts</b>																							
Number of Business Relocations	50	26	5	4	5	9	1	1	1	2	4	1	2	2	0	36	0	23					
<b>Residential Impacts</b>																							
Number of Residential Relocations	91	8	2	2	2	0	19	9	5	3	3	7	11	10	23	22	0	44					
<b>Potential Environmental Effects</b>																							
Archaeological/Historical Sites	0	0	0	0	0	0	0	0	0	0	0	0	0	0	0	0	0	0	0	0	0	1	
Noise <sup>1</sup>	244	780	780	780	780	780	780	780	780	780	780	780	780	780	780	780	780	780	780	780	780	780	
Wetlands (acres)	21.98	0.68	0	0	0	0	1.28	1.38	0.14	1.28	0.28	0	2.19	2.09	1.5	4.7	0	0.16					
Floodplains (acre feet)	5.41	1.29	0	0	0	0	0	15.89	1.42	1.42	0.72	6.52	6.52	6.52	31.63	0	0						
Threatened and Endangered Species	Low	Low	Low	Low	Low	Low	Low	Low	Low	Low	Low	Low	Low	Low	Low	Low	Low	Low	Low	Low	Low	Low	
Contamination Sites (high/medium)	43	10	1	2	2	2	0	1	0	2	3	0	0	1	1	6	0	14					
<b>Right of Way Needs</b>																							
Right of Way to be Acquired for Roadway Improvements (ac.)	137.0	15.1	5.1	4.3	5.4	4.4	10.3	10.4	9.4	9	8.3	11.1	14	15.4	15.1	15.1	15.1	15.1	15.1	15.1	15.1		
Right of Way to be Acquired for Transmission Facilities (ac.)	1.4	0	0	0	0	0	0	0	0	0	0	0	0	0	0	0	0	0	0	0	0	0	
Right of Way to be Acquired for Floodplain Compensation (ac.)	0	0	0	0	0	0	0	0	0	0	0	0	0	0	0	0	0	0	0	0	0	0	
<b>Estimated Total Project Costs (2015 Cost)</b>																							
Design <sup>2</sup>	\$2,418,000	\$1,443,000	\$546,000	\$546,000	\$546,000	\$546,000	\$987,000	\$987,000	\$468,000	\$419,000	\$419,000	\$884,000	\$1,837,000	\$1,837,000	\$1,837,000	\$1,837,000	\$4,491,000	\$0	\$0	\$0	\$12,324,000		
Wetland Mitigation <sup>3</sup>	N/A	\$102,000	\$0	\$0	\$0	\$0	\$0	\$192,000	\$287,000	\$1,000	\$183,000	\$42,000	\$0	\$228,000	\$214,000	\$225,000	\$1,080,000	\$0	\$0	\$0	\$24,000		
Road Right of Way	\$32,740,000	\$28,006,000	\$10,118,000	\$11,217,000	\$8,817,000	\$8,968,000	\$10,781,000	\$10,786,000	\$3,163,000	\$6,964,000	\$8,863,000	\$11,207,000	\$16,295,000	\$11,495,000	\$16,120,000	\$41,894,000	\$0	\$41,193,000					
SMP and FPC Right of Way		\$5,412,000	\$2,586,000	\$2,586,000	\$2,586,000	\$493,000	\$1,064,000	\$1,066,000	\$8,218,000	\$1,610,000	\$1,610,000	\$1,207,000	\$4,477,000	\$4,477,000	\$4,477,000	\$18,331,000	\$0	\$5,238,000					
Roadway Construction	\$23,990,000	\$16,493,000	\$5,465,000	\$5,465,000	\$5,465,000	\$9,870,000	\$9,870,000	\$6,480,000	\$6,192,000	\$6,495,000	\$6,192,000	\$6,495,000	\$10,368,000	\$10,368,000	\$10,368,000	\$48,910,000	\$0	\$23,244,000					
Construction Engineering & Inspection <sup>4</sup>	\$2,418,000	\$1,443,000	\$546,000	\$546,000	\$546,000	\$546,000	\$987,000	\$987,000	\$468,000	\$419,000	\$419,000	\$884,000	\$1,837,000	\$1,837,000	\$1,837,000	\$4,491,000	\$0	\$23,244,000					
<b>Preliminary Estimate of Total Project Cost (2015 Cost)</b>	\$67,530,000	\$54,000,000	\$20,315,000	\$21,955,000	\$15,510,000	\$23,483,000	\$23,093,000	\$19,176,000	\$16,194,000	\$17,945,000	\$22,172,000	\$33,543,000	\$38,728,000	\$33,715,000	\$51,422,000	\$0	\$76,899,000						

FLORIDA DEPARTMENT OF TRANSPORTATION  
 DISTRICT SEVEN  
 HILLSBOROUGH COUNTY

PUBLIC HEARING  
 HCC TRINKLE CENTER - DECEMBER 1, 2016  
 SHERATON TAMPA EAST HOTEL - DECEMBER 6, 2016





# US 92 (SR 600)

From East of I-4 to East of County Line Road  
 Project Development and Environment (PD&E) Reevaluation Study  
 Work Program Item Segment No. 435749-1

## Display Boards



### US 92 (SR 600)

From East of I-4 to East of County Line Road  
 Project Development and Environment (PD&E) Study Re-evaluation  
 Work Program Item Segment No. 435749-1

**PLEASE PROVIDE YOUR COMMENTS BY MONDAY, DECEMBER 19, 2016**

The form includes the FDOT logo, project title, and a section for public hearing session attendance with checkboxes for December 1 and December 6, 2016. It also contains a disclaimer about comment submission.

Make a verbal comment tonight  
 or  
 Drop the comment form in the comment box at this hearing  
 or  
 Mail your comments to:  
 Florida Department of Transportation  
 11201 N. McKinley Drive MS 7-500  
 Tampa, FL 33612  
 or  
 Email your comments to:  
 Lilliam Escalera  
 Lilliam.Escalera@dot.state.fl.us  
 or  
 Submit your comment electronically through the project website:  
<http://active.fdotd7studies.com/sr600/garden-lane-to-county-line/>

FLORIDA DEPARTMENT OF TRANSPORTATION  
 DISTRICT SEVEN  
 HILLSBOROUGH COUNTY

PUBLIC HEARING  
 HCC TRINKLE CENTER - DECEMBER 1, 2016  
 SHERATON TAMPA EAST HOTEL - DECEMBER 6, 2016



### US 92 (SR 600)

From East of I-4 to East of County Line Road  
 Project Development and Environment (PD&E) Study Re-evaluation  
 Work Program Item Segment No. 435749-1

## FEDERAL AND STATE REQUIREMENTS

Requirement	Description
<b>FEDERAL REQUIREMENTS</b>	
MAP-21	Moving Ahead for Progress in the 21st Century Act (2012)
23 Code of Federal Regulations (CFR), Chapter I, Part 450	Planning Assistance and Standards
23 CFR, Part 771, Section 771.111	Environmental Impact and Related Procedures - Early Coordination, Public Involvement, and Project Development
40 CFR, Chapter I, Part 93.105	Determining Conformity of Federal Actions to State or Federal Implementation Plans
40 CFR, Volume 23, Chapter I, Parts 1500-1508	Council on Environmental Quality Regulations (NEPA Requirements)
49 CFR, Subtitle A, Part 24	Uniform Relocation Assistance and Real Property Acquisition Policies Act
23 United States Code (USC), Section 1090h	Highways - Economic, Social, and Environmental Effects
23 USC, Section 128	Public Hearings
23 USC, Section 135	Statewide Planning
23 USC, Section 139	Efficient Environmental Reviews for Project Decision making
42 USC, Chapter 126, Section 12101	Americans with Disabilities Act of 1990, Titles I and V
42 USC, Subchapter V, Sections 20006-20006-7	Public Health and Welfare - Title VI of the 1964 Civil Rights Act and Related Statutes
42 USC, Title 42, Chapter 55, Section 4321	National Environmental Policy Act of 1969 (NEPA)
Executive Order 12898	Environmental Justice - Avoidance of actions that can cause disproportionately high impacts on minority and low income populations
Executive Order 13166	Improving Access to Devices for Persons with Limited English Proficiency (LEP)
FHWA Technical Advisory 0840.0A	Guidance for preparing and processing Environmental and Section 4(f)
<b>STATE REQUIREMENTS</b>	
Florida Statute 120.525	Meetings, Hearings, and Workshops
Florida Statute 286.011	Government-in-the-Sunshine Law
Florida Statute 335.199	Transportation Projects Modifying Access to Adjacent Property
Florida Statute 339.135	Public Hearings during the development of the Florida Transportation Plan
Florida Statute 339.155	Transportation Planning
Florida Statute 339.175	Public Transportation Finance and Planning, Metropolitan Planning Organization
Florida Statute 335.0211	Public Transportation, State Highway System
Florida Statute 479.106, Amended	Outdoor Advertising Signs/Noise-Attenuation Barrier
Florida Statute 163.3181(2)	Public Participation in the Comprehensive Planning Process: Intent, Alternative Dispute Resolution

This public hearing was advertised in Tampa Bay Times, Florida Sentinel, and La Gaceta on Friday, November 11, 2016 and Friday, November 18, 2016, and the Florida Administrative Register on Thursday, November 17, 2016.

FLORIDA DEPARTMENT OF TRANSPORTATION  
 DISTRICT SEVEN  
 HILLSBOROUGH COUNTY

PUBLIC HEARING  
 HCC TRINKLE CENTER - DECEMBER 1, 2016  
 SHERATON TAMPA EAST HOTEL - DECEMBER 6, 2016





# US 92 (SR 600)

From East of I-4 to East of County Line Road  
Project Development and Environment (PD&E) Reevaluation Study  
Work Program Item Segment No. 435749-1

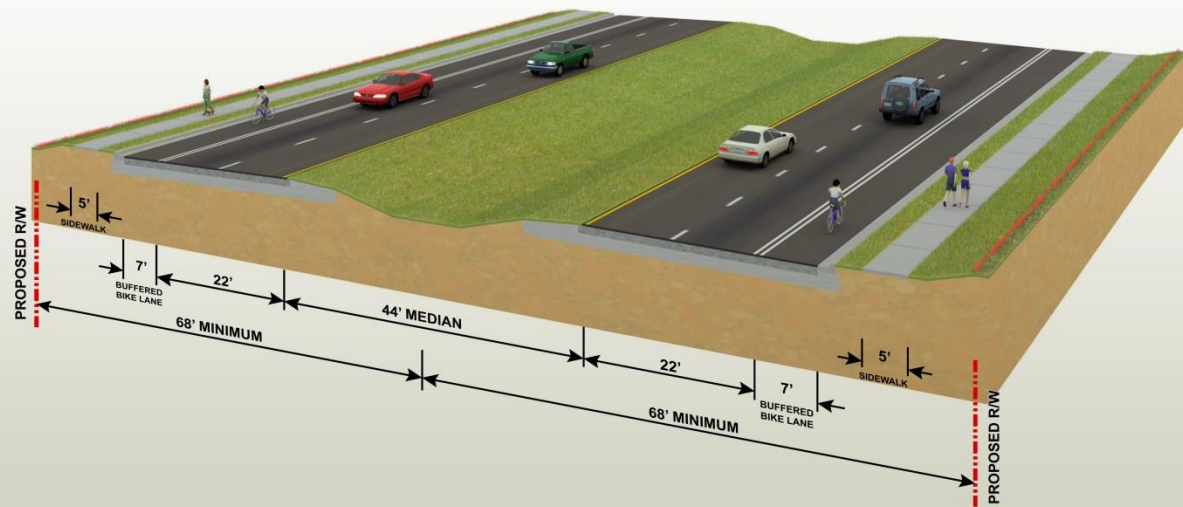
## Display Boards



### US 92 (SR 600)

From East of I-4 to East of County Line Road  
Project Development and Environment (PD&E) Study Re-evaluation  
Work Program Item Segment No. 435749-1

#### GARDEN LANE TO WEST OF I-75 OVERPASS EAST OF I-75 OVERPASS TO EAST OF CROW WING DRIVE RECOMMENDED BUILD ALTERNATIVE



FLORIDA DEPARTMENT OF TRANSPORTATION  
DISTRICT SEVEN  
HILLSBOROUGH COUNTY

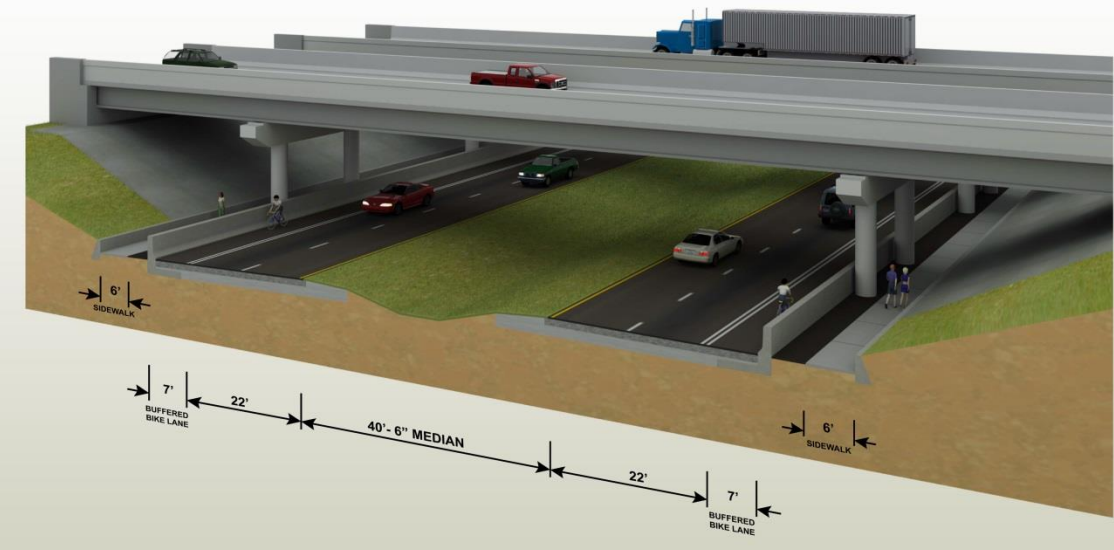
PUBLIC HEARING  
HCC TRINKLE CENTER - DECEMBER 1, 2016  
SHERATON TAMPA EAST HOTEL - DECEMBER 6, 2016



### US 92 (SR 600)

From East of I-4 to East of County Line Road  
Project Development and Environment (PD&E) Study Re-evaluation  
Work Program Item Segment No. 435749-1

#### WEST OF I-75 OVERPASS TO EAST OF I-75 OVERPASS RECOMMENDED BUILD ALTERNATIVE



FLORIDA DEPARTMENT OF TRANSPORTATION  
DISTRICT SEVEN  
HILLSBOROUGH COUNTY

PUBLIC HEARING  
HCC TRINKLE CENTER - DECEMBER 1, 2016  
SHERATON TAMPA EAST HOTEL - DECEMBER 6, 2016





# US 92 (SR 600)

From East of I-4 to East of County Line Road  
Project Development and Environment (PD&E) Reevaluation Study  
Work Program Item Segment No. 435749-1

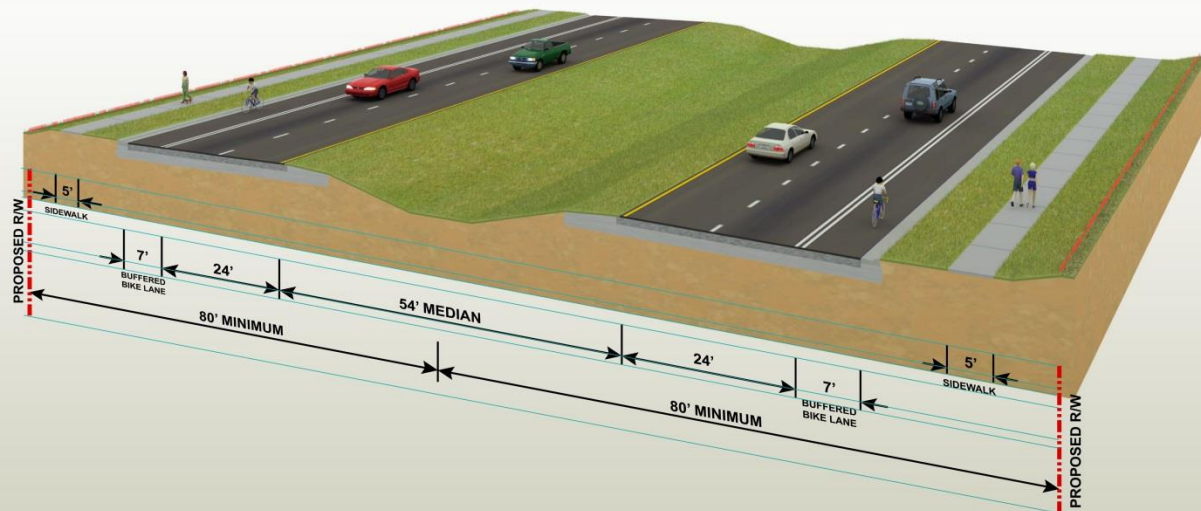
## Display Boards



### US 92 (SR 600)

From East of I-4 to East of County Line Road  
Project Development and Environment (PD&E) Study Re-evaluation  
Work Program Item Segment No. 435749-1

#### EAST OF CROW WING DRIVE TO EDWARDS STREET RECOMMENDED BUILD ALTERNATIVE



FLORIDA DEPARTMENT OF TRANSPORTATION  
DISTRICT SEVEN  
HILLSBOROUGH COUNTY

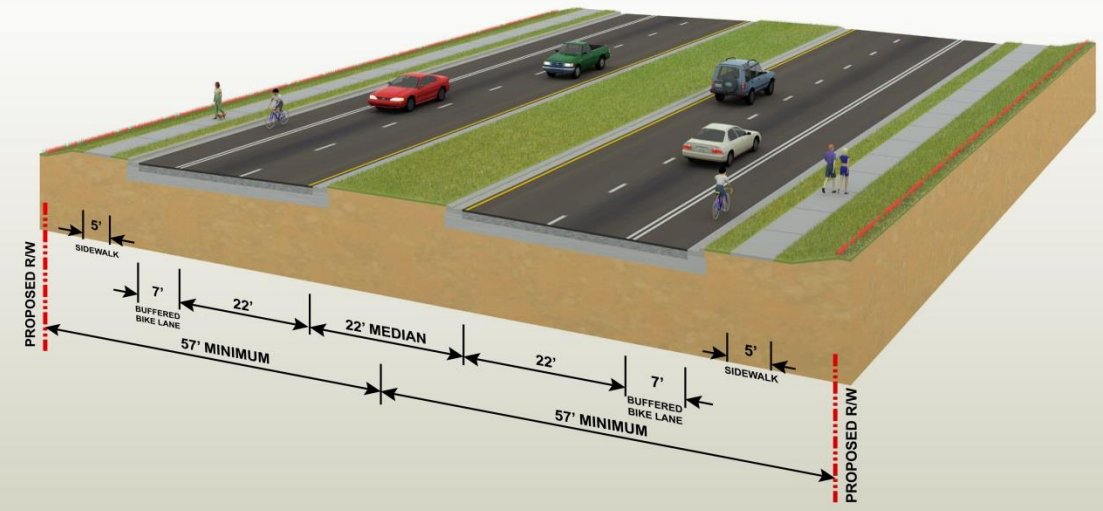
PUBLIC HEARING  
HCC TRINKLE CENTER - DECEMBER 1, 2016  
SHERATON TAMPA EAST HOTEL - DECEMBER 6, 2016



### US 92 (SR 600)

From East of I-4 to East of County Line Road  
Project Development and Environment (PD&E) Study Re-evaluation  
Work Program Item Segment No. 435749-1

#### EDWARDS STREET TO MOBLEY STREET RECOMMENDED BUILD ALTERNATIVE



FLORIDA DEPARTMENT OF TRANSPORTATION  
DISTRICT SEVEN  
HILLSBOROUGH COUNTY

PUBLIC HEARING  
HCC TRINKLE CENTER - DECEMBER 1, 2016  
SHERATON TAMPA EAST HOTEL - DECEMBER 6, 2016





# US 92 (SR 600)

From East of I-4 to East of County Line Road  
Project Development and Environment (PD&E) Reevaluation Study  
Work Program Item Segment No. 435749-1

## Display Boards

**FDOT** **US 92 (SR 600)** From East of I-4 to East of County Line Road  
Project Development and Environment (PD&E) Study Re-evaluation  
Work Program Item Segment No. 435749-1

### WEST OF PARK ROAD TO COUNTY LINE ROAD RECOMMENDED BUILD ALTERNATIVE

The diagram shows a cross-section of a road with the following dimensions from left to right:  
 - 5' Sidewalk  
 - 7' Buffered Bike Lane  
 - 24' Lane  
 - 40' Median  
 - 24' Lane  
 - 7' Buffered Bike Lane  
 - 5' Sidewalk  
 - 68' Minimum Right-of-Way (RW) on both sides.

FLORIDA DEPARTMENT OF TRANSPORTATION  
DISTRICT SEVEN  
HILLSBOROUGH COUNTY

PUBLIC HEARING  
HCC TRINKLE CENTER - DECEMBER 1, 2016  
SHERATON TAMPA EAST HOTEL - DECEMBER 6, 2016

**FDOT** **US 92 (SR 600)** From East of I-4 to East of County Line Road  
Project Development and Environment (PD&E) Study Re-evaluation  
Work Program Item Segment No. 435749-1

### SEGMENT MAP

The map displays the project route along US 92, divided into 11 segments. Key features include:  
 - **BEGIN STUDY** at Morris Bridge Rd.  
 - **BEGIN NO BUILD SEGMENT** at W Sam Allen Rd.  
 - **END NO BUILD SEGMENT** at E Park Rd.  
 - **END STUDY** at County Line Rd.  
 - Major roads shown include I-4, I-75, I-95, SR 41, SR 574, SR 39, SR 553, SR 38A, SR 574A, SR 39, and SR 60.  
 - A legend indicates **PROJECT LIMITS** (red line) and **NO BUILD AREA** (dashed green line).  
 - A scale bar shows 0, 0.5, and 1 mile.

FLORIDA DEPARTMENT OF TRANSPORTATION  
DISTRICT SEVEN  
HILLSBOROUGH COUNTY

PUBLIC HEARING  
HCC TRINKLE CENTER - DECEMBER 1, 2016  
SHERATON TAMPA EAST HOTEL - DECEMBER 6, 2016





# US 92 (SR 600)

From East of I-4 to East of County Line Road  
Project Development and Environment (PD&E) Reevaluation Study  
Work Program Item Segment No. 435749-1

## Display Boards







# US 92 (SR 600)

From East of I-4 to East of County Line Road  
Project Development and Environment (PD&E) Reevaluation Study  
Work Program Item Segment No. 435749-1

## Display Boards







# US 92 (SR 600)

From East of I-4 to East of County Line Road  
Project Development and Environment (PD&E) Reevaluation Study  
Work Program Item Segment No. 435749-1

## Display Boards



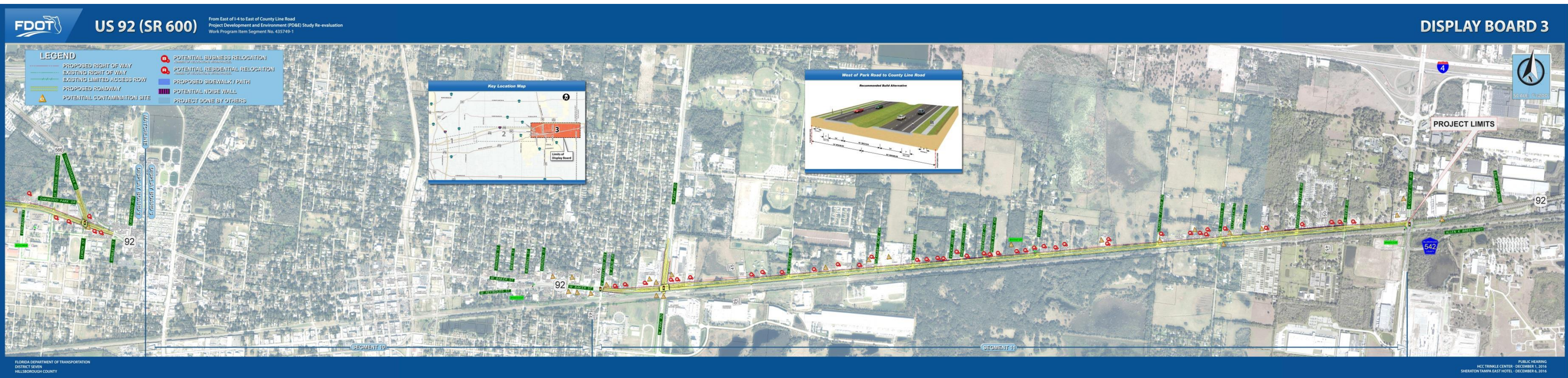




# US 92 (SR 600)

From East of I-4 to East of County Line Road  
Project Development and Environment (PD&E) Reevaluation Study  
Work Program Item Segment No. 435749-1

## Display Boards







# US 92 (SR 600)

From East of I-4 to East of County Line Road  
Project Development and Environment (PD&E) Reevaluation Study  
Work Program Item Segment No. 435749-1



## PowerPoint Presentation with Script



Welcome to the Public Hearing for the US 92 Project Development and Environment, or P D and E, Study Re-evaluation.

1

A PD&E Study was originally completed for this project in March of 1994. Due to changes in design standards and existing conditions, the original PD&E Study is being re-evaluated. The purpose of this study is to determine the location and conceptual design of the preferred roadway improvements, as well as associated social, economic, and environmental effects of the improvements. At tonight's hearing, we'll present the findings of the PD&E Study Re-evaluation for US 92.

2

The Florida Department of Transportation, in cooperation with the Federal Highway Administration, is holding this hearing to provide you with information and to get your comments about this study. The study corridor limits are from east of Interstate 4 at Garden Lane to east of County Line Road in Hillsborough County, a distance of approximately 18.1 miles.

3

US 92 is a major east-west arterial of regional significance that parallels I-4 and State Road 574 in Hillsborough County. Within the study area, US 92 plays a significant role in connecting eastern Hillsborough County to the Tampa Bay region.

4

Aligning with the primary goal of FDOT, this project is focused on improving safety while also improving facility operation. Along the corridor there will be various safety and operational improvements made to this vital highway. Both to the east and west of downtown Plant City there are segments that will be converted from a two-lane to a four-lane road improving capacity. As with the original study, Downtown Plant City, from Mobley Street to Maryland Avenue, will be considered a no-build segment, with no improvements made. FDOT does have a resurfacing project programmed for this segment that will include sidewalk and safety enhancements.

5

The existing roadway for US 92 from Garden Lane to Thonotosassa Road is generally a two-lane undivided rural roadway. Sidewalks or boardwalks have been added along one or both sides of the highway.

From Thonotosassa Road to Mobley Street, the roadway transitions from a two-lane to a four-lane facility.

Then from Mobley Street to Gordon Street, US 92 is divided and forms a two-lane one-way pair system.

From Gordon Street to Park Road, US 92 is a four-lane divided urban roadway with curb and gutter. There is a 5-foot sidewalk along the north side of the road.

From east of Park Road to east of County Line Road, US 92 is a rural facility with two 12-foot-wide lanes.

6

As identified in the original PD&E Study, the need for the project is based on capacity deficiencies, consistency with transportation plans, safety, and socioeconomic demand.

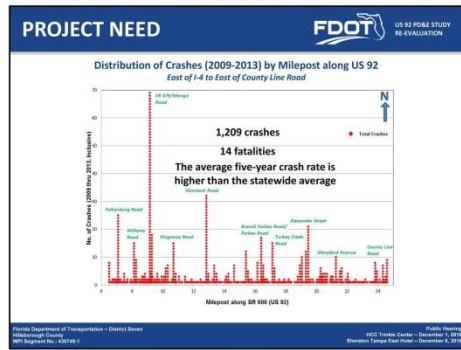
Based on the growth projected to occur within the corridor, US 92 is projected to have future traffic volumes ranging from approximately 18,100 to 39,300 vehicles per day by year 2040. These volumes would exceed the roadway capacity for existing US 92 within the project limits. The proposed widening to four lanes will allow US 92 to meet future travel demand at an acceptable level of service and allow US 92 to continue to serve as an important regional arterial.

7

The project is consistent with local planning. The segments of US 92 from US 301 to County Road 579 and from Park Road to County Line Road have been identified as cost feasible projects in the Imagine 2040: Hillsborough Long Range Transportation Plan. These segments have also been included in the State Transportation Improvement Program and the Hillsborough County Metropolitan Planning Organization's Transportation Improvement Program for design.

8





Crash data along US 92 within the project limits was obtained from FDOT for the most recent five-year period, from 2009 through 2013. There were one thousand two hundred and nine crashes reported during the five-year period which involved numerous injuries and fourteen fatalities. The average crash rate over the entire length of the US 92 study corridor is higher than the statewide average crash rate for two of the segments. Many of the crashes on US 92 are types that are associated with congestion. The proposed widening of US 92 and the addition of turn lanes at intersections is expected to improve safety along the corridor.

The Hillsborough County MPO's 2040 L RTP socioeconomic projections estimate an employment increase of 56% and a population increase of 48% for Hillsborough County between the year 2010 and year 2040. As a result, traffic on US 92 is expected to increase due to projected population and employment growth both along the corridor and in the region.

This public hearing is being conducted in accordance with all federal, state, and local requirements. Draft study reports are available for review at this hearing and have been on public display at two local libraries as well as the FDOT District Seven office. The display period began on November 8<sup>th</sup> and will continue until December 19<sup>th</sup> 2016. The project newsletter shows the library hours.

There are four primary typical sections for the project that are represented by the different colors on the map. The no-build segment, highlighted in green on the map will not have any improvements made.

Recommended improvements include widening the existing highway to four lanes (except through downtown Plant City from Mobley Street to Maryland Avenue) as well as adding paved shoulders to the inside and outside of the travel lanes, and improving sidewalk connectivity.

Typical section 1 shows the recommended build alternative that relates to four segments along US 92. This build alternative consists of an urban roadway with two 11-foot travel lanes, a seven-foot buffered bike lane in each direction, and five-foot sidewalks on both sides of the road. The travel lanes are separated by a 44-foot wide median. Curb and gutter are also used along the outside lanes. This typical section requires a minimum of 136 feet of right-of-way. The recommended alignments separated by segments are shown on display tonight.

Under the I-75 overpass, the typical section is narrower because of the width between the existing I-75 bridge piers. The recommended build alternative for this segment is two 11-foot travel lanes with a seven-foot buffered bike lane in each direction. The travel lanes are separated by a 40 and a half-foot-wide median. Pier protection barriers are located between the bike lanes and the piers, with six-foot sidewalks located on the outside of the barriers in both directions.

Typical section 3 involves five segments along US 92 from East of Crow Wing Drive to Edwards Street. The recommended build alternative consists of a high speed suburban roadway with two 12-foot travel lanes, a seven-foot buffered bike lane in each direction, and five-foot sidewalks on both sides of the road. The travel lanes are separated by a 54-foot wide median. Curb and gutter are also used along the outside lanes. This typical section requires a minimum of 160 feet of right-of-way.



### RECOMMENDED BUILD ALTERNATIVE

#### Edwards Street to Mobley Street

- 45 mph design speed
- 114 feet right-of-way
- Center Alignment
- Urban Roadway

From Edwards Street to Mobley Street the recommended build alternative is shown in typical section 4. This build alternative is an urban roadway with two 11-foot travel lanes, a seven-foot buffered bike lane in each direction, and five-foot-wide sidewalks. The travel lanes are separated by a 22-foot-wide median. Curb and gutter are along the inside and outside lanes. This typical section requires a minimum of 114 feet right-of-way.

### RECOMMENDED BUILD ALTERNATIVE

#### West of Park Road to County Line Road

- 50 mph design speed
- 136 feet right-of-way
- North Alignment
- High speed suburban roadway

The recommended build alternative for the segment from West of Park Road to County Line Road is a high speed suburban roadway consisting of two 12-foot travel lanes, a seven-foot buffered bike lane in each direction, and a five-foot-wide sidewalk. The travel lanes are separated by a 40-foot-wide median. This typical section requires a minimum of 136 feet of right-of-way. The recommended build alternatives for this project ends at County Line Road but will tie in to improvements of US 92 located in Polk County that is being proposed by FDOT District One.

### ACCESS MANAGEMENT

- Combination of directional and full median openings proposed
  - Directional median openings allow some turns
  - Full median openings allow turns in all directions
- Driveway and crossroad locations considered
- Access Management Class 5 spacing criteria

Class	Medians	Median Openings		Signal	Connection	
		Full	Directional		More than 100' high posted speed	45 mph and less posted speed
5	Restrictive	2,640' At 45,000,000,000 At 15,000,000,000	660'		440'	245'

With any roadway improvements, to install medians providing access to property is always a priority while also meeting acceptable guidelines. Median openings are provided at specific locations to provide access to adjacent properties. The spacing between median openings and traffic signal locations are dictated by the access management classification of the roadway. The proposed median opening types and their locations are shown on the display boards tonight.

### ENVIRONMENTAL STUDIES

This PD&E Study Re-evaluation includes:

- Comprehensive evaluation of the proposed improvements
- Evaluation of economic, socio-cultural and natural environment effects

This PD&E Study Re-evaluation includes evaluation of economic, socio-cultural and natural environment effects. The study team had a chance to evaluate the Natural and Physical effects of the recommended alternative broken down by build segments.

Impacts are anticipated and are consistent with the impacts identified in the original PD&E Study. Details of all project impacts separated by segments are shown on the evaluation matrix displayed tonight.

### ENVIRONMENTAL STUDIES SOCIO-ECONOMIC EFFECTS

- Potential Relocations
  - 120 residential relocations
  - 110 business relocations
- Right-of-way acquisition in accordance with Uniform Act
  - Relocation Assistance
  - Real Estate Acquisition Process

One of the unavoidable consequences of a project such as this is the necessary relocation of residences or businesses. On this project, we anticipate the relocation of 120 residential locations and 110 business locations. All right-of-way acquisition will be conducted in accordance with the federal Uniform Relocation Assistance and Real Property Acquisition Act of 1970, commonly known as the Uniform Act.

Informational brochures are available here tonight that describe the Department's relocation assistance program and right-of-way acquisition program. Representatives from FDOT's right-of-way office are available here tonight also and can address your questions regarding the real estate acquisition process or you can write to the Department at the address shown in your handout.

### CULTURAL EFFECTS

- Cultural Resource Survey Results:
  - 3 Historical Resources
  - No Archaeological Sites
- FHWA and State Historic Preservation Officer Reviewed and Concurred

A Draft Section 106 Case Study Report is Available Tonight

Specialists conducted a cultural resource survey in accordance with Chapter 267 of the Florida Statutes and the National Historic Preservation Act of 1966 to identify cultural resources within the project's area of potential effect. Three historic resources within the build segments have been identified as eligible for the National Register of Historic Places. They include the Camp Knox Tourist Court, Tomlin Middle School, and the Polk County Line Obelisk. No archaeological sites were identified. The State Historic Preservation Officer and Federal Highway Administration concurred with the results of the survey. A Section 106 Case Study Report was prepared to identify any impacts to these historic resources. This draft report is available at this hearing for your review and comments will be accepted.

### NO-BUILD ALTERNATIVE

- Segment runs through Downtown Plant City
  - Mobley Street to Maryland Avenue
- No improvements - only routine maintenance

In addition to the recommended build alternative, the no-build alternative relates back to a previously proposed alternative from the original PD&E Study in 1994. The original PD&E Study recommended that the section of US 92, between Mobley Street and Whitehall Street, be converted from a rural roadway to an urban roadway in order to provide sidewalks and drainage enhancements. These improvements were completed for this section and met the intent of the original PD&E Study recommendation. This re-evaluation of US 92 concludes that this segment, from Mobley Street to Maryland Avenue, will remain a no-build alternative. The No-Build alternative assumes that no improvements will be made to that segment of US 92 through the year 2040 except routine maintenance, pavement resurfacing, and safety enhancements as required.

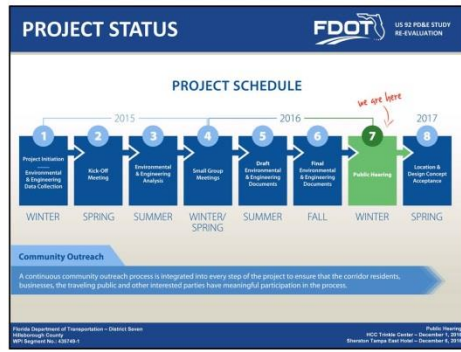
### EVALUATION MATRIX

A detailed alternatives comparison matrix is on display tonight

The estimated total cost for proposed improvements is approximately \$399 million in today's dollars

The estimated total cost for the proposed improvements to the widening of US 92 is approximately \$399 million in today's dollars. The total cost is broken down by design, right-of-way acquisition, wetland mitigation, construction, and construction engineering and inspection. This chart on display at tonight's hearing shows the impacts and costs split by segment.





The PD&E Study is scheduled for completion in the beginning of 2017, with design scheduled to begin in the spring for the west and eastern segments. The study schedule is on display this evening. FDOT's 5-Year Work Program includes funding for the design of the four-lane widening of US 92 from Garden Lane to Mango Road and from Park Road to County Line Road in fiscal year 2017. Right-of-way acquisition and construction of the improvements are not currently funded in the 5-Year Work Program.

We encourage you to give your feedback on the proposed improvements mentioned tonight. There are several ways to make a comment as part of the public hearing record. To provide comments: You can speak directly with the court reporter at this hearing. You may make a comment during the formal hearing session tonight. You may complete the comment form provided in your brochure and drop it in one of the comment boxes today. You may email the form to [lilliam.escalera@dot.state.fl.us](mailto:lilliam.escalera@dot.state.fl.us). You may make a comment on the project website. Or you may mail written comments to the address listed on the back of the form. All comments must be received or postmarked by December 19, 2016 to become part of the official public hearing record.

Please visit the project website at the address shown on this slide and as listed in your handout. Here you can find more information on the project; view schedules, and learn about upcoming events.

Thank you for coming out tonight and participating in the US 92 PD&E Study Re-evaluation process. We look forward to your comments and continued interest in this project. Remember to be Alert Today, Alive Tomorrow. Safety doesn't happen by accident.

Please take time to view the exhibits in the Main Area and provide us your comments.

The video will repeat in **1** minute

Please take time to view the exhibits in the Main Area and provide us your comments.

The video will repeat in **30** seconds

Please take time to view the exhibits in the Main Area and provide us your comments.

The video will repeat in **10** seconds

Please take time to view the exhibits in the Main Area and provide us your comments.

The video will repeat in **5** seconds

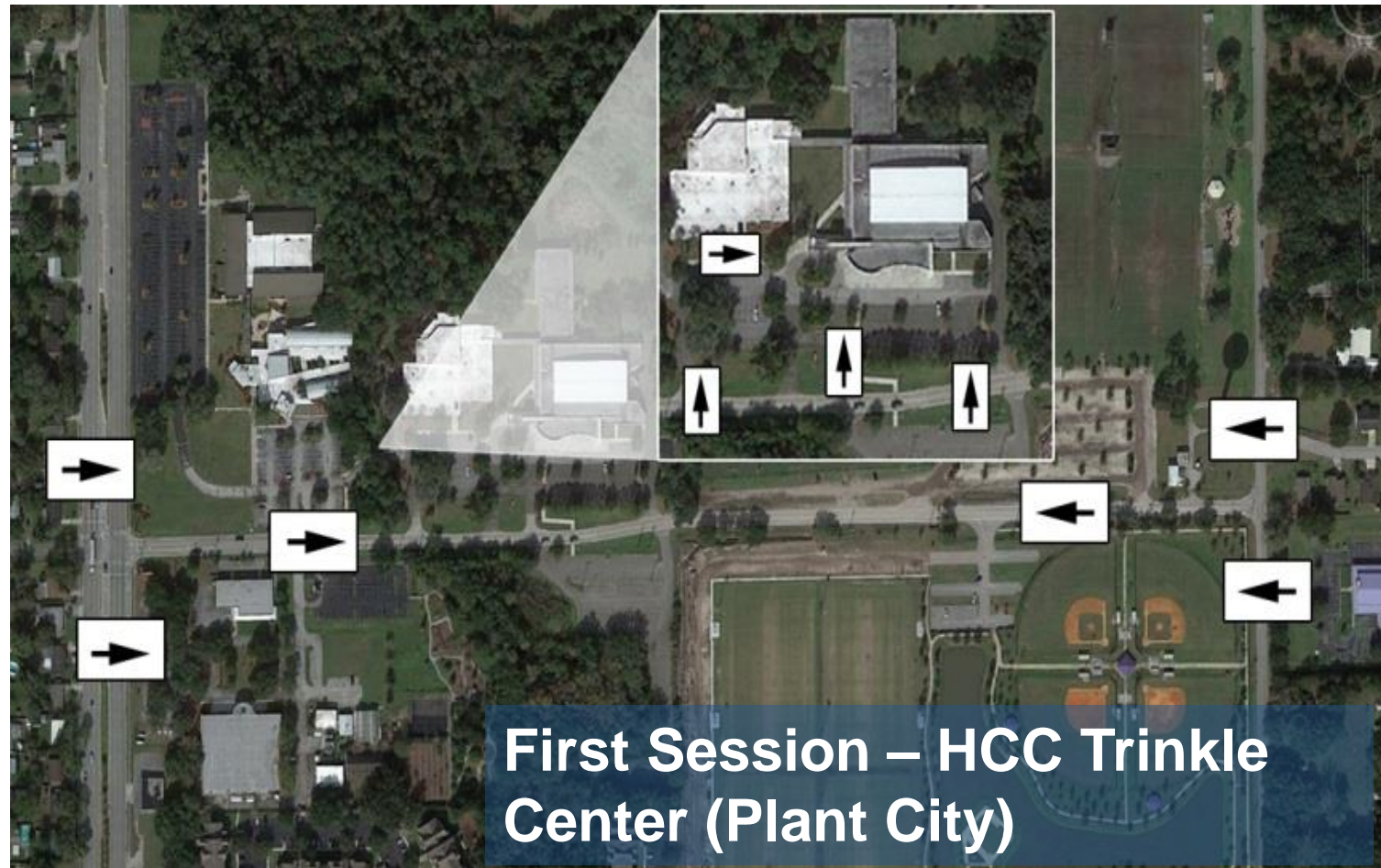




## Exterior Sign Locations & Photos



## Exterior Sign Locations





## Photos





## Photos

