

MATCH LINE

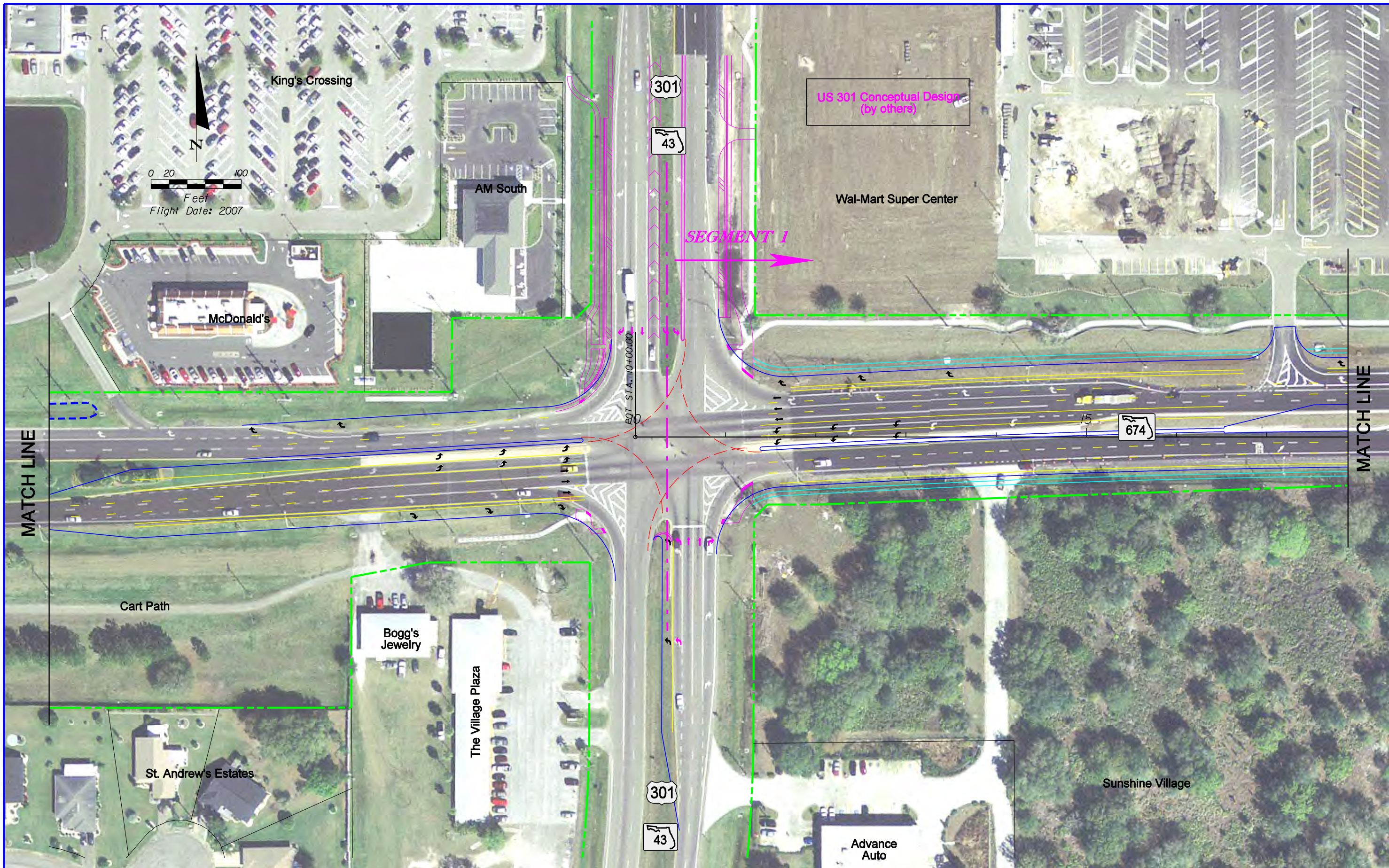
- EXISTING RIGHT-OF-WAY
- PROPOSED RIGHT-OF-WAY
- PROPERTY LINE
- PAVEMENT MARKINGS
- WETLAND BOUNDARY
- FLOODPLAIN BOUNDARY
- SIDEWALK
- POTENTIAL NOISE BARRIER
- B POTENTIAL BUSINESS RELOCATION
- ▲ POTENTIAL CONTAMINATION SITE

LOCHNER
 13577 FEATHER SOUND DR. SUITE 600
 CLEARWATER, FLORIDA 33762
 FBPR CERTIFICATE OF AUTH. # 894

STATE OF FLORIDA DEPARTMENT OF TRANSPORTATION		
ROAD NO.	COUNTY	WPI Segment No.
SR 674	HILLSBOROUGH	422762 1

RECOMMENDED ALTERNATIVE

SHEET NO.
1



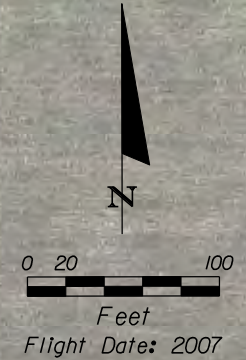
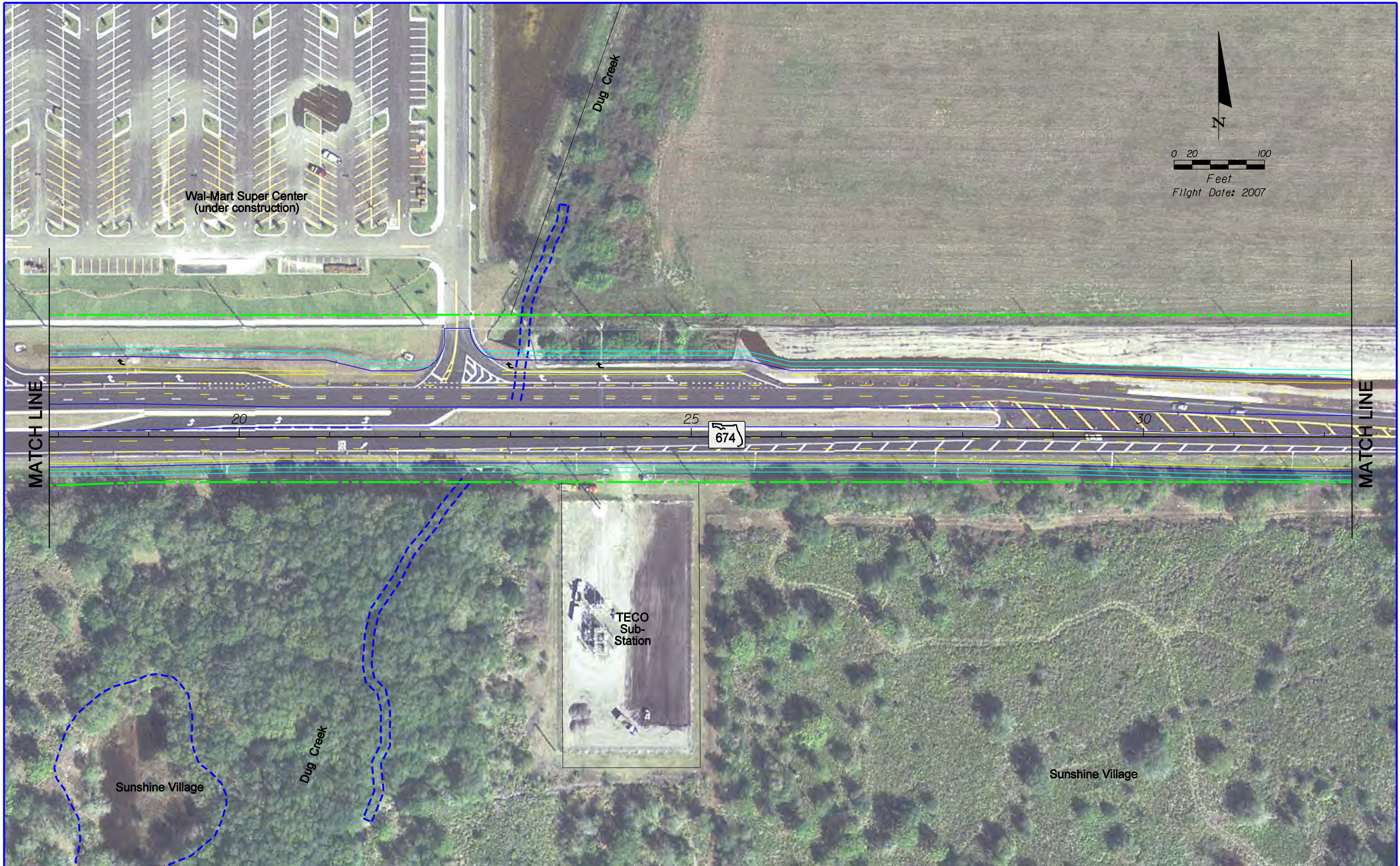
- EXISTING RIGHT-OF-WAY
- PROPOSED RIGHT-OF-WAY
- PROPERTY LINE
- PAVEMENT MARKINGS
- WETLAND BOUNDARY
- FLOODPLAIN BOUNDARY
- SIDEWALK
- POTENTIAL NOISE BARRIER
- POTENTIAL BUSINESS RELOCATION
- ▲ POTENTIAL CONTAMINATION SITE

LOCHNER
 15577 FEATHER SOUND DR. SUITE 600
 CLEARWATER, FLORIDA 33762
 FBPR CERTIFICATE OF AUTH. # 894

STATE OF FLORIDA DEPARTMENT OF TRANSPORTATION		
ROAD NO.	COUNTY	WPI Segment No.
SR 674	HILLSBOROUGH	422762 1

RECOMMENDED ALTERNATIVE

SHEET NO.
2



MATCH LINE

MATCH LINE

- | | | |
|-----------------------|-------------------------|-------------------------------|
| EXISTING RIGHT-OF-WAY | WETLAND BOUNDARY | POTENTIAL BUSINESS RELOCATION |
| PROPOSED RIGHT-OF-WAY | FLOODPLAIN BOUNDARY | POTENTIAL CONTAMINATION SITE |
| PROPERTY LINE | SIDEWALK | |
| PAVEMENT MARKINGS | POTENTIAL NOISE BARRIER | |

LOCHNER
 13577 FEATHER SOUND DR. SUITE 600
 CLEARWATER, FLORIDA 33762
 FBPR CERTIFICATE OF AUTH. # 894

STATE OF FLORIDA DEPARTMENT OF TRANSPORTATION		
ROAD NO.	COUNTY	WPI Segment No.
SR 674	HILLSBOROUGH	422762 1

RECOMMENDED ALTERNATIVE

SHEET NO.
3



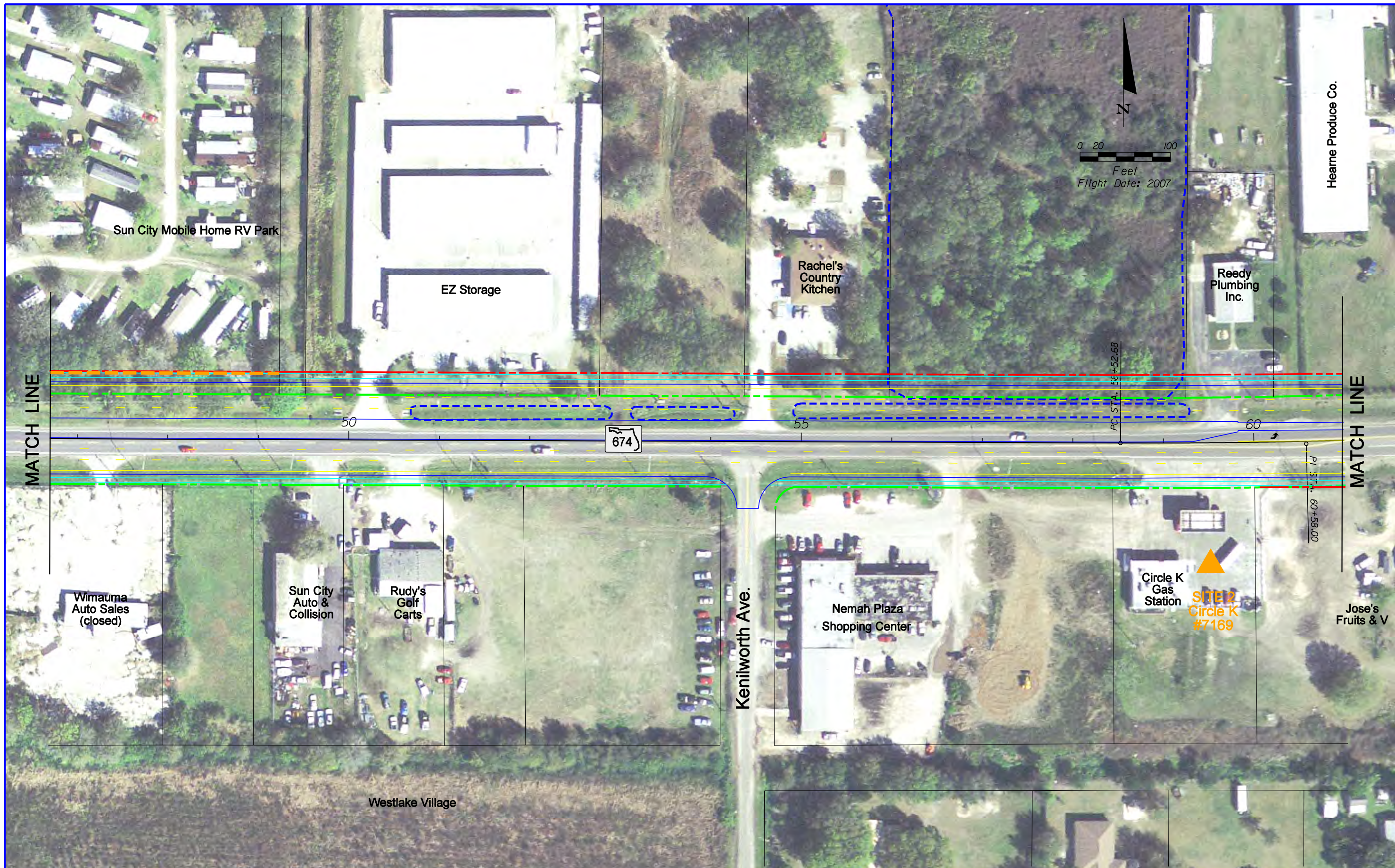
	EXISTING RIGHT-OF-WAY		WETLAND BOUNDARY		POTENTIAL BUSINESS RELOCATION
	PROPOSED RIGHT-OF-WAY		FLOODPLAIN BOUNDARY		POTENTIAL CONTAMINATION SITE
	PROPERTY LINE		SIDEWALK		
	PAVEMENT MARKINGS		POTENTIAL NOISE BARRIER		

LOCHNER
 15577 FEATHER SOUND DR. SUITE 600
 CLEARWATER, FLORIDA 33762
 FBPR CERTIFICATE OF AUTH. # 894

STATE OF FLORIDA DEPARTMENT OF TRANSPORTATION		
ROAD NO.	COUNTY	WPI Segment No.
SR 674	HILLSBOROUGH	422762 1

RECOMMENDED ALTERNATIVE

SHEET NO.
4



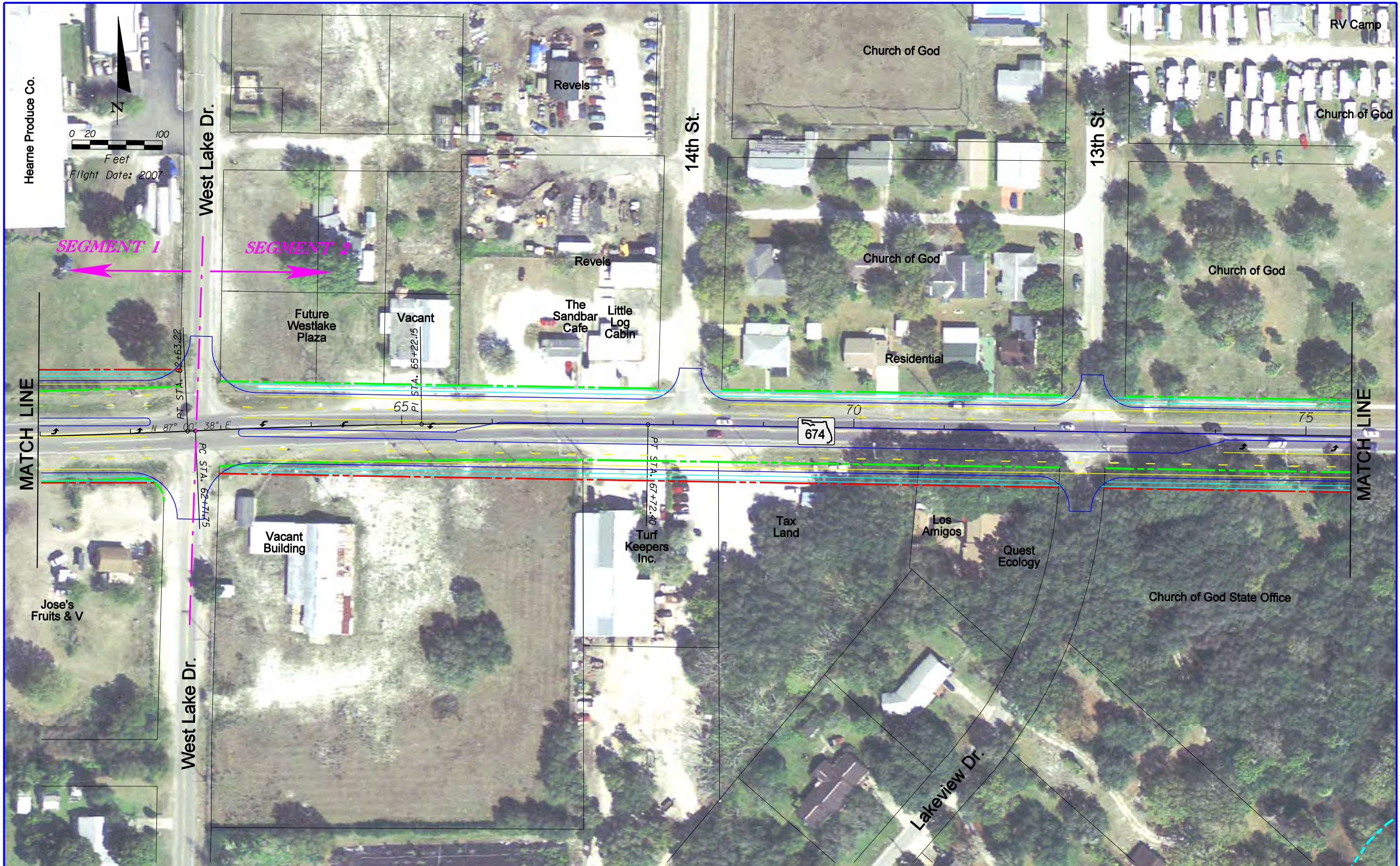
- EXISTING RIGHT-OF-WAY
- PROPOSED RIGHT-OF-WAY
- PROPERTY LINE
- PAVEMENT MARKINGS
- WETLAND BOUNDARY
- FLOODPLAIN BOUNDARY
- SIDEWALK
- POTENTIAL NOISE BARRIER
- B POTENTIAL BUSINESS RELOCATION
- ▲ POTENTIAL CONTAMINATION SITE

LOCHNER
 15577 FEATHER SOUND DR. SUITE 600
 CLEARWATER, FLORIDA 33762
 FBPR CERTIFICATE OF AUTH. # 894

STATE OF FLORIDA DEPARTMENT OF TRANSPORTATION		
ROAD NO.	COUNTY	WPI Segment No.
SR 674	HILLSBOROUGH	422762 1

RECOMMENDED ALTERNATIVE

SHEET NO.
5



Hearne Produce Co.
 0 20 100
 Feet
 Flight Date: 2007

MATCH LINE

MATCH LINE

- EXISTING RIGHT-OF-WAY
- PROPOSED RIGHT-OF-WAY
- PROPERTY LINE
- PAVEMENT MARKINGS
- WETLAND BOUNDARY
- FLOODPLAIN BOUNDARY
- SIDEWALK
- POTENTIAL NOISE BARRIER
- POTENTIAL BUSINESS RELOCATION
- ▲ POTENTIAL CONTAMINATION SITE

LOCHNER
 13577 FEATHER SOUND DR. SUITE 600
 CLEARWATER, FLORIDA 33762
 FBPR CERTIFICATE OF AUTH. # 894

STATE OF FLORIDA DEPARTMENT OF TRANSPORTATION		
ROAD NO.	COUNTY	WPI Segment No.
SR 674	HILLSBOROUGH	422762 1

RECOMMENDED ALTERNATIVE

SHEET NO.
6



	EXISTING RIGHT-OF-WAY		WETLAND BOUNDARY		POTENTIAL BUSINESS RELOCATION
	PROPOSED RIGHT-OF-WAY		FLOODPLAIN BOUNDARY		POTENTIAL CONTAMINATION SITE
	PROPERTY LINE		SIDEWALK		
	PAVEMENT MARKINGS		POTENTIAL NOISE BARRIER		

LOCHNER
 13577 FEATHER SOUND DR. SUITE 600
 CLEARWATER, FLORIDA 33762
 FBPR CERTIFICATE OF AUTH. # 894

STATE OF FLORIDA DEPARTMENT OF TRANSPORTATION		
ROAD NO.	COUNTY	WPI Segment No.
SR 674	HILLSBOROUGH	422762 1

RECOMMENDED ALTERNATIVE

SHEET NO.
7



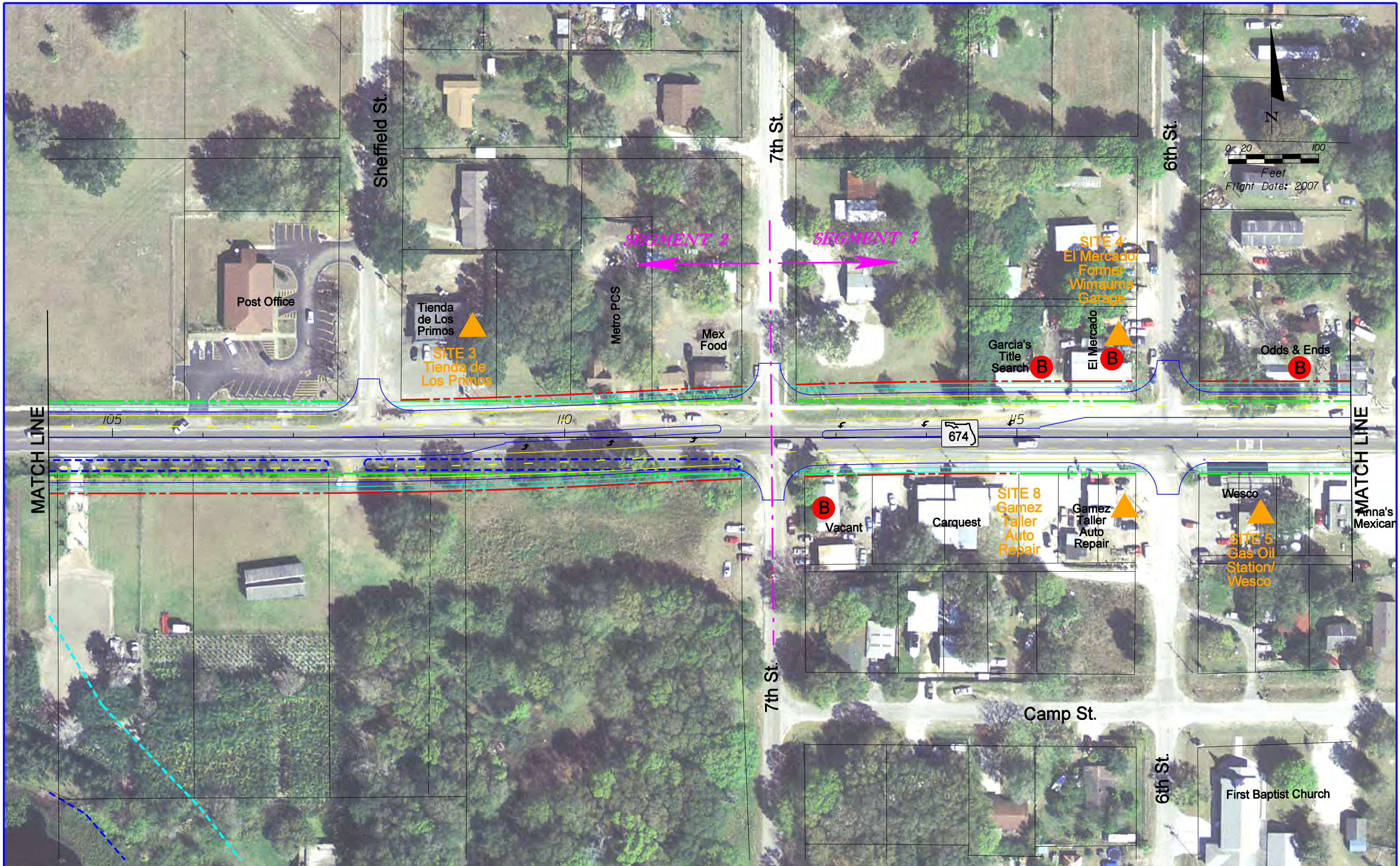
	EXISTING RIGHT-OF-WAY		WETLAND BOUNDARY		POTENTIAL BUSINESS RELOCATION
	PROPOSED RIGHT-OF-WAY		FLOODPLAIN BOUNDARY		POTENTIAL CONTAMINATION SITE
	PROPERTY LINE		SIDEWALK		
	PAVEMENT MARKINGS		POTENTIAL NOISE BARRIER		

LOCHNER
 15577 FEATHER SOUND DR. SUITE 600
 CLEARWATER, FLORIDA 33762
 FBPR CERTIFICATE OF AUTH. # 894

STATE OF FLORIDA DEPARTMENT OF TRANSPORTATION		
ROAD NO.	COUNTY	WPI Segment No.
SR 674	HILLSBOROUGH	422762 1

RECOMMENDED ALTERNATIVE

SHEET NO.
8



	EXISTING RIGHT-OF-WAY		WETLAND BOUNDARY		POTENTIAL BUSINESS RELOCATION
	PROPOSED RIGHT-OF-WAY		FLOODPLAIN BOUNDARY		POTENTIAL CONTAMINATION SITE
	PROPERTY LINE		SIDEWALK		
	PAVEMENT MARKINGS		POTENTIAL NOISE BARRIER		

LOCHNER
 15577 FEATHER SOUND DR. SUITE 600
 CLEARWATER, FLORIDA 33762
 FBPR CERTIFICATE OF AUTH. # 894

STATE OF FLORIDA DEPARTMENT OF TRANSPORTATION		
ROAD NO.	COUNTY	WPI Segment No.
SR 674	HILLSBOROUGH	422762 1

RECOMMENDED ALTERNATIVE

SHEET NO.
9



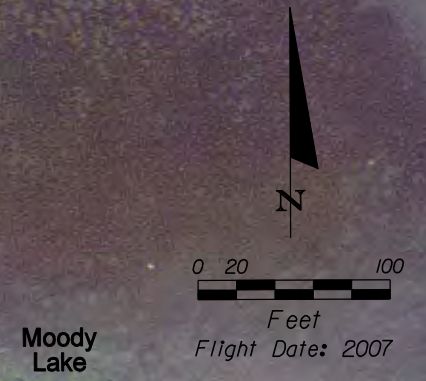
	EXISTING RIGHT-OF-WAY		WETLAND BOUNDARY		POTENTIAL BUSINESS RELOCATION
	PROPOSED RIGHT-OF-WAY		FLOODPLAIN BOUNDARY		POTENTIAL CONTAMINATION SITE
	PROPERTY LINE		SIDEWALK		
	PAVEMENT MARKINGS		POTENTIAL NOISE BARRIER		

LOCHNER
 13577 FEATHER SOUND DR. SUITE 600
 CLEARWATER, FLORIDA 33762
 FBPR CERTIFICATE OF AUTH. # 894

STATE OF FLORIDA DEPARTMENT OF TRANSPORTATION		
ROAD NO.	COUNTY	WPI Segment No.
SR 674	HILLSBOROUGH	422762 1

RECOMMENDED ALTERNATIVE

SHEET NO.
10



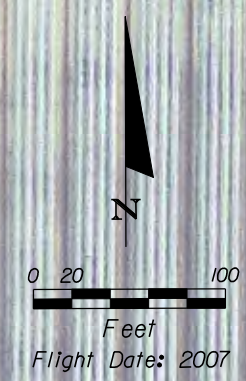
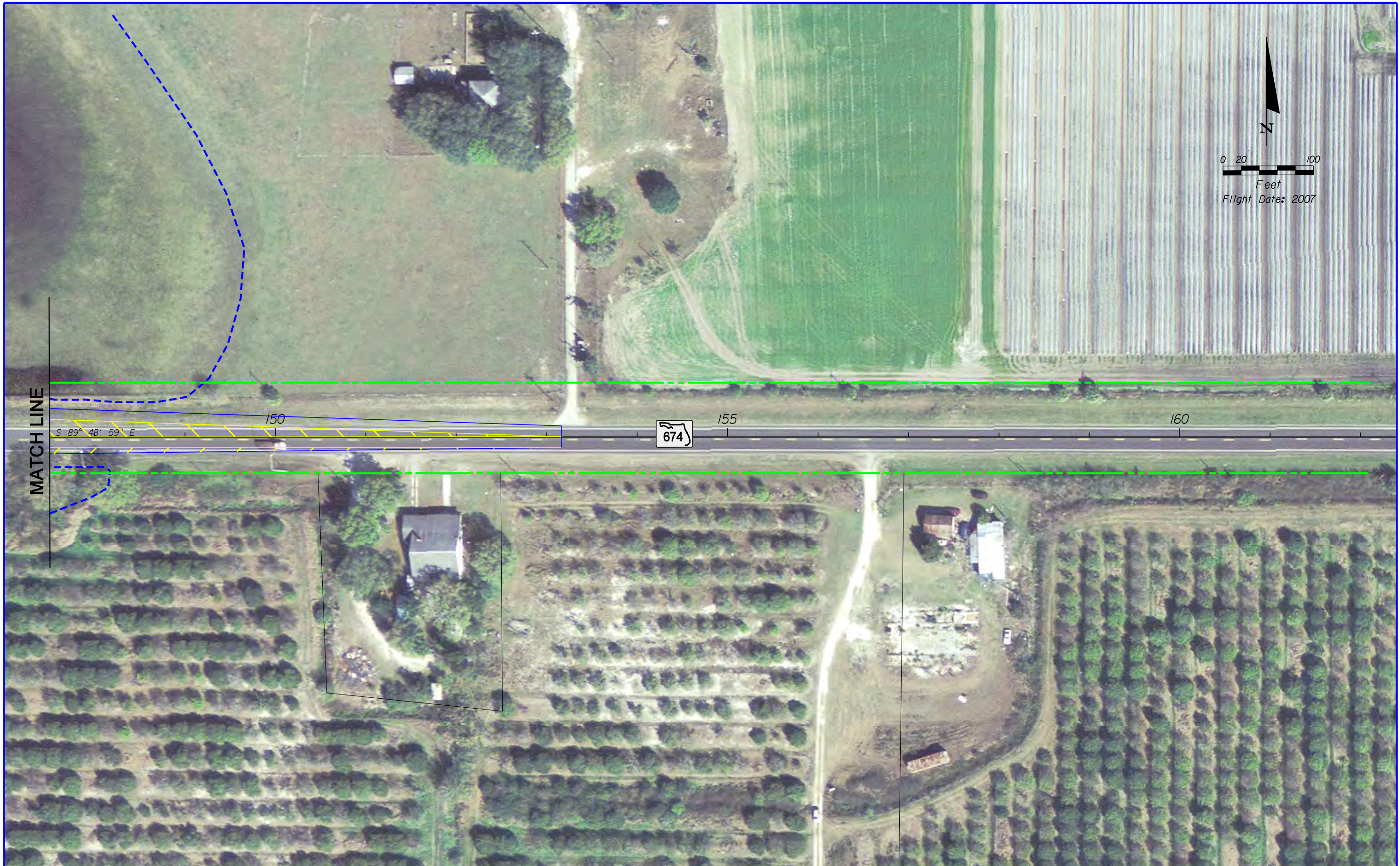
- EXISTING RIGHT-OF-WAY
- PROPOSED RIGHT-OF-WAY
- PROPERTY LINE
- PAVEMENT MARKINGS
- WETLAND BOUNDARY
- FLOODPLAIN BOUNDARY
- SIDEWALK
- POTENTIAL NOISE BARRIER
- POTENTIAL BUSINESS RELOCATION
- ▲ POTENTIAL CONTAMINATION SITE

LOCHNER
 13577 FEATHER SOUND DR. SUITE 600
 CLEARWATER, FLORIDA 33762
 FBPR CERTIFICATE OF AUTH. # 894

STATE OF FLORIDA DEPARTMENT OF TRANSPORTATION		
ROAD NO.	COUNTY	WPI Segment No.
SR 674	HILLSBOROUGH	422762 1

RECOMMENDED ALTERNATIVE

SHEET NO.
11



MATCH LINE

S 89° 48' 59" E

150

674

155

160

	EXISTING RIGHT-OF-WAY		WETLAND BOUNDARY		POTENTIAL BUSINESS RELOCATION
	PROPOSED RIGHT-OF-WAY		FLOODPLAIN BOUNDARY		POTENTIAL CONTAMINATION SITE
	PROPERTY LINE		SIDEWALK		
	PAVEMENT MARKINGS		POTENTIAL NOISE BARRIER		

LOCHNER
 15577 FEATHER SOUND DR. SUITE 600
 CLEARWATER, FLORIDA 33762
 FBPR CERTIFICATE OF AUTH. # 894

STATE OF FLORIDA DEPARTMENT OF TRANSPORTATION		
ROAD NO.	COUNTY	WPI Segment No.
SR 674	HILLSBOROUGH	422762 1

RECOMMENDED ALTERNATIVE

SHEET NO.
12