

Final Comments and Coordination Report

US 301 (SR 39)

**From South of CR 54 (Eiland Boulevard)
to US 98 Bypass (SR 533)
Pasco County, Florida**

**Work Program Item No: 408075-1
Federal Aid Project No: 3112-020-P**

Prepared For:



**Florida Department of Transportation
District Seven
11201 North Malcolm McKinley Drive
Tampa, Florida 33612**

March 2010

Final Comments and Coordination Report

US 301 (SR 39)

**From South of CR 54 (Eiland Boulevard) to US 98 Bypass (SR 533)
Pasco County, Florida**

**Work Program Item No: 408075-1
Federal Aid Project No: 3112-020-P**

Prepared For:



Florida Department of Transportation

Prepared By:

KB Environmental Sciences, Inc.

9500 Koger Blvd, Suite 211
St. Petersburg, FL 33702

In coordination with:

HDR Engineering, Inc.

5426 Bay Center Drive, Suite 400
Tampa, FL 33609

EXECUTIVE SUMMARY

The Florida Department of Transportation (FDOT) conducted a Project Development and Environment (PD&E) Study to evaluate improvements to US 301 (SR 39) in eastern Pasco County. The project limits are from south of CR 54 (Eiland Boulevard) to the US 98 Bypass (SR 533). The length of the study is 7.6 miles. The objective of the PD&E Study was to provide documented environmental and engineering analyses, which would help the FDOT and the Federal Highway Administration (FHWA) reach a decision on the type, conceptual design and location of the necessary improvements within the US 301 PD&E Study limits to accommodate future transportation needs in a safe and efficient manner. This Comments and Coordination Report was prepared as part of the PD&E Study. The objective of the Comments and Coordination Report was to provide documentation associated with the public involvement program that was developed and implemented for the US 301 PD&E Study.

Originally, the PD&E Study evaluated the proposed widening of US 301 to a six-lane divided roadway from south of CR 54 to the US 98 Bypass for two Build Alternatives representing three separate typical sections: Build Alternative 1 - High Speed Urban typical section for Segments A through D; and Build Alternative 2 - Low Speed Urban typical section for Segments A and D and Rural typical section for Segments B and C. A summary of the impacts that could occur if either Build Alternative were to be implemented for each of the study segments was presented at the Alternatives Public Workshop held on June 3, 2009.

The purpose of the Alternatives Public Workshop was to solicit public input regarding the proposed Build Alternatives and the No-Build Alternative for the proposed project. On July 16, 2009 the FDOT determined a recommended Build Alternative would be presented at the Study's Public Hearing in addition to the No Build Alternative. The recommended Build Alternative determination was based on the results of the Build Alternative's impact evaluation, public feedback received during the public involvement process, and consistency with current transportation plans.

As a result of this determination, the Recommended Build Alternative presented at the Public Hearing on November 4, 2009 consisted of widening US 301 to a six-lane roadway facility in Segment A only (from south of CR 54 to north of Kossik Road) and maintaining the existing four-lanes on US 301 in Segments B-D (from north of Kossik Road to the US 98 Bypass). The recommended typical section for the six-lane widening was a low-speed urban typical section. The section of US 301 between Kossik Road and Wire Road will be used to transition the proposed six-lanes into the existing four-lane roadway. To minimize traffic congestion and improve safety north of Kossik Road, Transportation System Management (TSM)

improvements were also recommended. The TSM improvements could include, but not be limited to, median modifications on US 301 from north of Kossik Road to US 98 Bypass and turn lane improvements at four signalized intersections: Centennial Road, CR 52A (Clinton Avenue), Morningside Drive, and US 98 Bypass.

The Recommended Build Alternative developed for the US 301 PD&E Study is required to be consistent with the Pasco County Metropolitan Planning Organization's (MPO) Cost Affordable Roadway Long Range Transportation Plan (LRTP). The Recommended Build Alternative presented at the Study's Public Hearing on November 4, 2009 was consistent with the Pasco MPO 2025 Cost Affordable LRTP. Subsequent to the Public Hearing, the Pasco County MPO adopted their 2035 LRTP on December 10, 2009. The adopted 2035 Cost Affordable Roadway Plan contains an additional roadway segment on US 301 between US 98 (SR 700) and CR 52A where six-lanes are proposed in addition to the six-lane roadway section on US 301 from south of CR 54 to Kossik Road.

Therefore, the Recommended Build Alternative consists of widening US 301 to a six-lane roadway facility in Segment A (from south of CR 54 to north of Kossik Road) and a portion of Segment C from south of US 98 (SR 700) to CR 52A. The section of US 301 between Kossik Road and Wire Road will be used to transition the proposed six-lanes in Segment A into the existing four-lane roadway. Within the portion of Segment C from south of US 98 (SR 700) to CR 52A, the section of US 301 from north of Musselman Road to US 98 will be used to transition the proposed six-lanes in Segment C into the existing four-lane roadway. Elsewhere within the study limits, the existing four-lanes on US 301 in Segments B-D (from north of Kossik Road to US 98 Bypass) will remain as is. The recommended typical section for the six-lane widening is a low-speed urban typical section within Segment A, and a rural typical section within the portion of Segment C from US 98 to CR 52A. To minimize traffic congestion and improve safety north of Kossik Road, TSM improvements will be provided at three signalized intersections: Centennial Road, Morningside Drive, and US 98 Bypass. The previously recommended TSM improvements at CR 52A would be constructed as part of the widening in the portion of Segment C. The key efforts and their dates are outlined below:

- Advance Notification Package to the Florida State Clearinghouse – October 30, 2008
- Environmental Technical Advisory Members (ETDM) Programming Screen Summary Reports (PSSR) – Between May 3, 2006 and October 30, 2008
- Project Kick-Off Newsletter – February 2009

- Alternatives Public Workshop Newsletter – May 2009
- Alternatives Public Workshop Advertisement – May 13, 2009 and May 27, 2009
- Alternatives Public Workshop – June 3, 2009
- Public Hearing Newsletter – October 4, 2009
- Public Hearing Advertisement – October 14, 2009 and October 28, 2009
- Project Documents Available for Public Review – From October 15, 2009 to November 16, 2009
- Public Hearing – November 4, 2009

TABLE OF CONTENTS

Section	Title	Page
LIST OF FIGURES		v
SECTION 1 INTRODUCTION		1-1
SECTION 2 PROPOSED IMPROVEMENTS		2-1
2.1	Project Description	2-1
2.2	Purpose and Need	2-1
2.3	Project Segmentation	2-2
2.4	Build Alternative Selection.....	2-2
SECTION 3 PUBLIC INVOLVEMENT PLAN		3-1
SECTION 4 ADVANCE NOTIFICATION PACKAGE		4-1
4.1	Advance Notification.....	4-1
4.2	Advance Notification Mailing List	4-1
4.3	Summary of Agency Comments and Responses	4-2
SECTION 5 PROJECT KICKOFF NEWSLETTER		5-1
SECTION 6 COORDINATION EFFORTS		6-1
6.1	Alternatives Public Workshop Newsletter/Workshop	6-1
6.2	Agency Coordination and Local Government Meetings	6-1
SECTION 7 PUBLIC HEARING		7-1
7.1	Public Hearing Advertisements	7-1
7.2	Public Hearing Process Comments.....	7-3
7.2.1	Verbal and Written Comments Received During Formal Comment Period.....	7-3
 APPENDIX A Advance Notification Package		
APPENDIX B Official Comments and Responses		
APPENDIX C Public Hearing Transcript		

LIST OF FIGURES

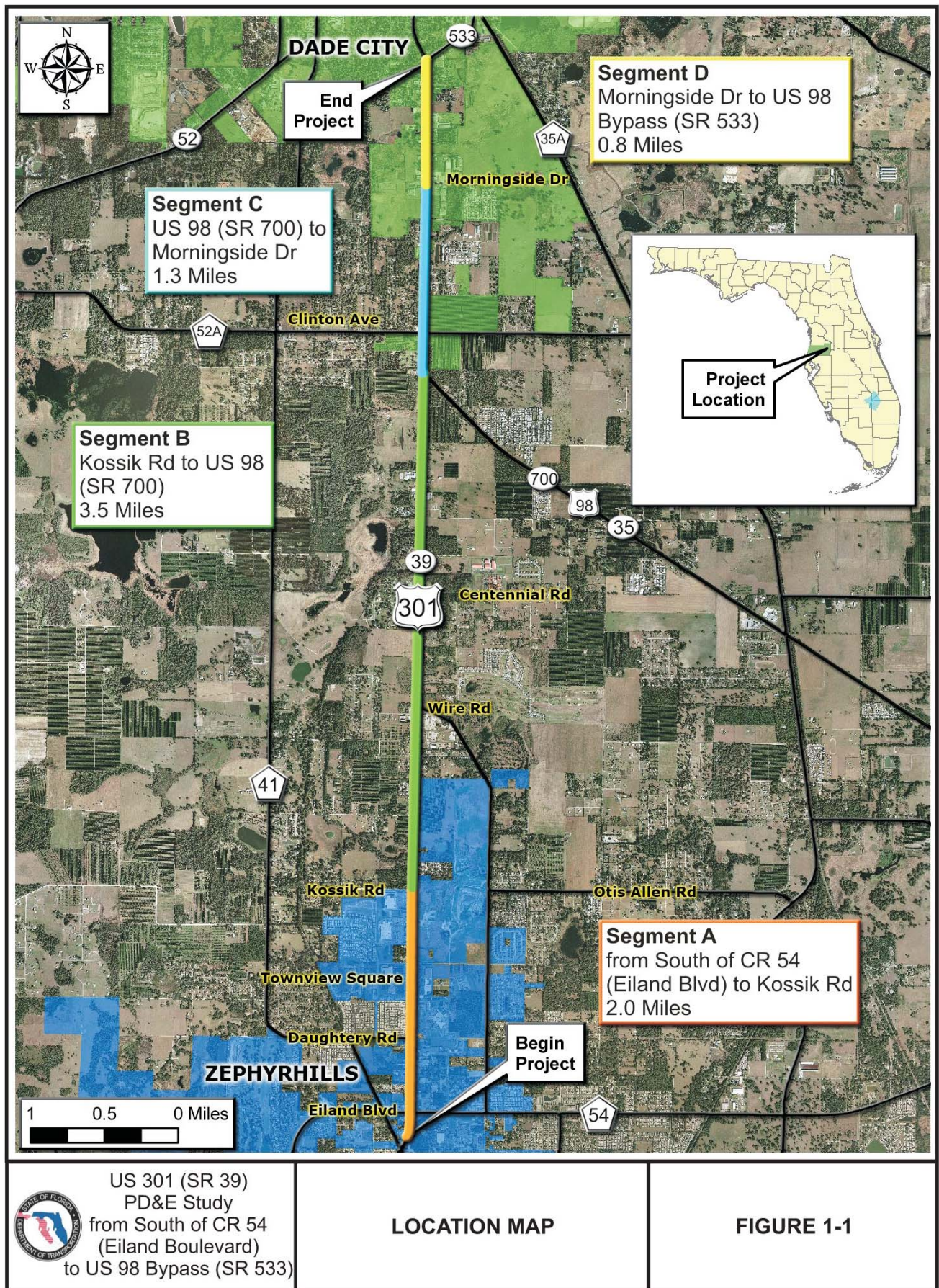
Figure	Title	Page
Figure 1-1:	Location Map	1-2
Figure 2-1	Roadway Typical from S. of CR 54 (Eiland Blvd.) to N. of Kossik Road, Segment A Recommended Alternative.....	2-5
Figure 2-2	Roadway Typical from US 98 (SR 700) to CR52A (Clinton Avenue).....	2-6
Figure 6-1	US 301 PD&E Study Alternatives Workshop Display Ad	6-2
Figure 7-1	US 19 PD&E Study Public Hearing Legal Display Ad	7-2

SECTION 1

INTRODUCTION

The Florida Department of Transportation (FDOT) conducted a Project Development and Environment (PD&E) Study to evaluate improvements to US 301 (SR 39) in eastern Pasco County. The project location is illustrated on **Figure 1-1**. The limits of the study corridor are from south of CR 54 (Eiland Boulevard) to the US 98 Bypass (SR 533), a project length of 7.6 miles.

The objective of the PD&E Study was to provide documented environmental and engineering analyses, which would assist the FDOT and the Federal Highway Administration (FHWA) in reaching a decision on the type, conceptual design and location of the necessary improvements within the US 301 PD&E study limits to accommodate future transportation needs in a safe and efficient manner. This Comments and Coordination Report was prepared as part of the PD&E Study.



SECTION 2

PROPOSED IMPROVEMENTS

2.1 PROJECT DESCRIPTION

US 301 is a four-lane divided north-south arterial that connects the cities of Zephyrhills and Dade City. The US 301 roadway provides an important connection to the regional and statewide transportation network linking the Tampa Bay region to the remainder of the state and nation. US 301 is identified as a regional roadway by the West Central Florida Metropolitan Planning Organization's (MPO's) Chairs Coordinating Committee (CCC) and is included in the Regional Roadway Network.

US 301 is designated as an emergency evacuation route and currently operates as an existing truck route. The 2035 Cost Affordable Roadway Plan of the Pasco County MPO Long Range Transportation Plan (LRTP) identifies the need to widen US 301 to six lanes from south of CR 54 to Kossik Road and from US 98 (SR 700) to CR 52A (Clinton Avenue). This PD&E Study evaluated the physical, social, cultural, environmental and economic impacts of providing alternative improvements to US 301 that included, but were not limited to, a No-Build Alternative, Build Alternatives that considered the widening of US 301 to six lanes from south of CR 54 to US 98 Bypass, Transportation System Management (TSM) improvements and median modifications to improve safety and mobility throughout the limits of the PD&E Study.

2.2 PURPOSE AND NEED

Motorists in Pasco County are faced with increased traffic congestion and delays as demand from the County's growth continues to place pressure on the existing transportation system. To assess the effects of continued growth along US 301, the FDOT initiated a PD&E Study that evaluates the impacts of providing alternative roadway capacity improvements to the facility. The purpose of this PD&E Study is to develop a plan to accommodate future growth in an organized manner and to maintain mobility along a regionally significant transportation corridor. The need for improvements along US 301 within the study limits was developed based on the evaluation of the following criteria:

- Existing and future quality of traffic operations along US 301 assuming the existing roadway conditions.
- traffic safety conditions for the time period between the years 2003 and 2007,
- consistency with local government plans, and

- projected future socioeconomic growth of Pasco County.

2.3 PROJECT SEGMENTATION

The project was divided in segments to effectively assess and compare the impacts of each alternative within the different geographical areas of the study corridor. After considering the existing right-of-way (ROW) along US 301, existing traffic volumes and land use patterns, and the locations of cross streets, the project was divided into four study segments. These segments are illustrated on **Figure 1-1** and can be described as follows:

- Segment A: South of CR 54 to Kossik Road, a distance of 2.0 miles,
- Segment B: Kossik Road to US 98, a distance of 3.5 miles,
- Segment C: US 98 to Morningside Drive, a distance of 1.3 miles, and
- Segment D: Morningside Drive to US 98 Bypass, a distance of 0.8 miles.

2.4 BUILD ALTERNATIVE SELECTION

An Alternatives Public Workshop was held on June 3, 2009. The purpose of the workshop was to solicit public input regarding the proposed alternatives for the project. On July 16, 2009 the FDOT determined that the recommended alternative, a Build Alternative, would be presented at the Study's Public Hearing (in addition to the No Build Alternative). The recommended alternative selection was based on the results of the project's impact evaluation, public feedback received during the public involvement process, and a need to be consistent with area transportation plans.

The Recommended Build Alternative presented at the Public Hearing on November 3, 2009 consisted of the six-lane widening of US 301 in Segment A only (south of CR 54 to north of Kossik Road). The analysis indicated that the projected traffic volumes do not support the need to widen US 301 to six lanes in Segments B and C. In Segment D, the six-lane widening is not planned to be implemented for the following reasons: 1) Segment D is a relatively short segment (0.8 miles) with acute ROW constraints (only 100 feet of ROW) thus making the required ROW acquisition costs high; 2) the proposed six-lane widening is currently not identified in the 2035 Cost Affordable Roadway Plan of the Pasco County LRTP, 3) and there are capacity constrained routes at the northern terminus of the Study limits that are not planned for improvement in any current transportation plans. Therefore, these routes would be unable to accommodate the additional lanes.

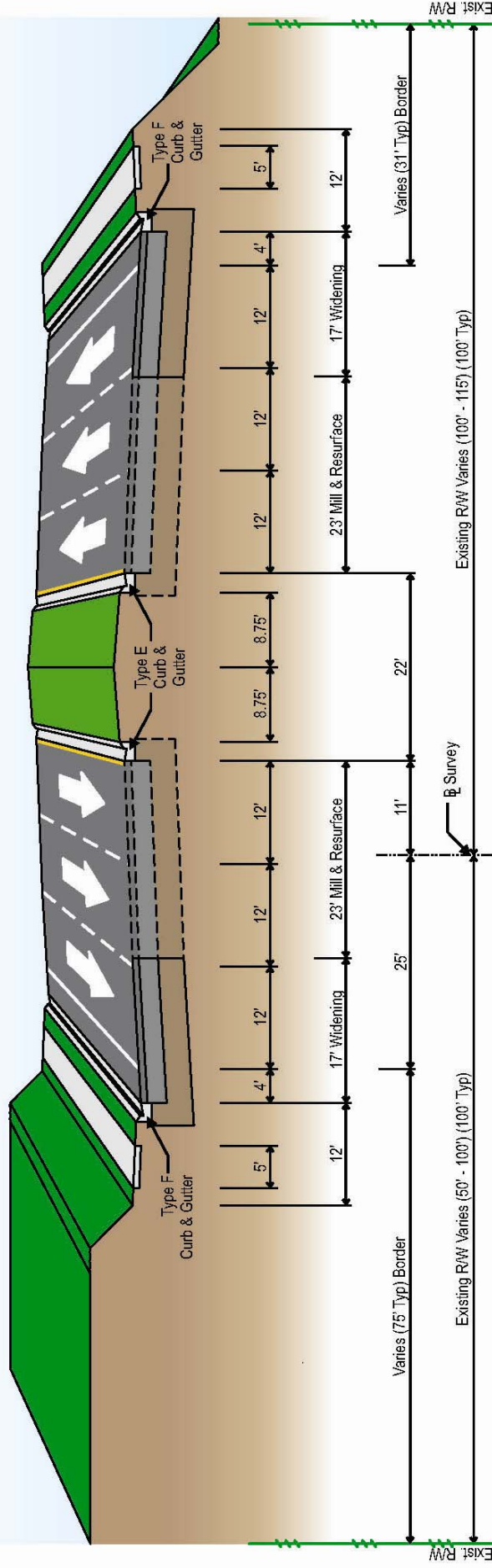
The typical section that was recommended for Segment A of the project corridor is described as a low speed urban typical section. This typical section was selected as the recommended Build Alternative because it would minimize the overall ROW acquisition cost associated with implementing the project. The recommended typical section for Segment A is illustrated on **Figure 2-1**.

As stated above, the Recommended Build Alternative would widen US 301 to a six-lane roadway in Segment A (from south of CR 54 to north of Kossik Road) only and maintain the existing four-lanes on US 301 in Segments B through D (from north of Kossik Road to US 98 Bypass). Notably, the section of US 301 between Kossik Road and Wire Road will be used to transition the recommended six-lanes into the existing four-lane roadway. Further, to minimize traffic congestion and improve safety north of Kossik Road, TSM improvements were also recommended. The TSM improvements are to include, but not be limited to, median modifications on US 301 from north of Kossik Road to US 98 Bypass and turn lane improvements at four signalized intersections: Centennial Road, CR 52A (Clinton Avenue), Morningside Drive and US 98 Bypass.

The Recommended Build Alternative developed for the US 301 PD&E Study is required to be consistent with the Pasco County Metropolitan Planning Organization's (MPO) Cost Affordable Roadway Long Range Transportation Plan (LRTP). The Recommended Build Alternative presented at the Study's Public Hearing on November 4, 2009 was consistent with the Pasco MPO 2025 Cost Affordable LRTP. Subsequent to the Public Hearing, the Pasco County MPO adopted their 2035 LRTP on December 10, 2009. The adopted 2035 Cost Affordable Roadway Plan contains an additional roadway segment on US 301 between US 98 and CR 52A where six-lanes are proposed in addition to the six-lane roadway section on US 301 from south of CR 54 to Kossik Road.

Therefore, the Recommended Build Alternative consists of widening US 301 to a six-lane roadway facility in Segment A (from south of CR 54 to north of Kossik Road) and a portion of Segment C from south of US 98 to CR 52A. The section of US 301 between Kossik Road and Wire Road will be used to transition the proposed six-lanes in Segment A into the existing four-lane roadway. Within the portion of Segment C from south of US 98 to CR 52A, the section of US 301 from north of Musselman Road to US 98 will be used to transition the proposed six-lanes in Segment C into the existing four-lane roadway. Elsewhere within the study limits, the existing four-lanes on US 301 in Segments B-D (from north of Kossik Road to US 98 Bypass) will remain as is. The recommended typical section for the six-lane widening is a low-speed urban typical section within Segment A (shown in **Figure 2-1**), and a rural typical section within the portion of Segment C between US 98 to

and CR 52A (shown in **Figure 2-2**). To minimize traffic congestion and improve safety north of Kossik Road, TSM improvements will be provided at three signalized intersections: Centennial Road, Morningside Drive, and US 98 Bypass. The previously recommended TSM improvements at CR 52A would be constructed as part of the widening in the portion of Segment C. Documentation associated with the public involvement program that was developed and implemented for the US 301 PD&E Study is provided in the following sections.




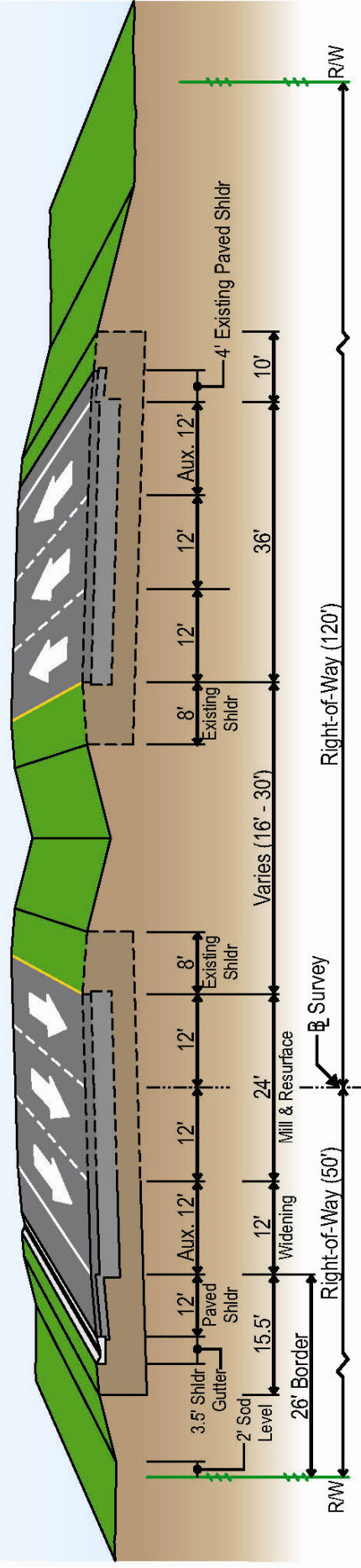
Design Speed = 45 mph

US 301 (SR 39)
PD&E Study
from South of CR 54
(Eiland Boulevard)
to US 98 Bypass (SR 533)



ROADWAY TYPICAL SECTION
FROM SOUTH OF CR 54 (EILAND BOULEVARD) TO
NORTH OF KOSSIK ROAD
SEGMENT A - RECOMMENDED ALTERNATIVE

FIGURE 2-1



US 301 (SR 39)
PD&E Study
from South of CR 54
(Eiland Boulevard)
to US 98 Bypass (SR 533)

**RECOMMENDED ROADWAY TYPICAL SECTION
FROM US 98 (SR 700) TO CR 52A (CLINTON AVENUE)**

FIGURE 2-2

SECTION 3

PUBLIC INVOLVEMENT PLAN

A comprehensive Public Involvement Plan (PIP) was developed and implemented as part of this study. The purpose of this plan was to inform and solicit responses from all interested parties including local residents, public officials, agencies, and business owners. The program included four newsletters; the Kickoff Newsletter, Alternatives Public Workshop Newsletter, Public Hearing Newsletter and a Final Newsletter following the approval of the Study's environmental document. The first three of these newsletters are described further in Sections 4.0, 5.0, and 6.0. The program also included an Advance Notification package and a Public Hearing.

SECTION 4

ADVANCE NOTIFICATION PACKAGE

4.1 ADVANCE NOTIFICATION

Through the Efficient Transportation Decision Making (ETDM)/ Advance Notification process, the Florida Department of Transportation (FDOT) informed federal, state, regional, and local agencies of this project and its scope of anticipated activities. The project's Advance Notification package was distributed to the Florida State Clearinghouse on October 30, 2008 and forwarded to those agencies listed below. Copies of the ETDM/Advance Notification package may be found in **Appendix A**.

4.2 ADVANCE NOTIFICATION MAILING LIST

Federal

- Federal Aviation Administration
- Federal Highway Administration
- Federal Railroad Administration
- Federal Transit Administration
- U.S. Army Corps of Engineers
- U.S. Coast Guard
- U.S. Department of Agriculture
- U.S. Department of Commerce, National Oceanic and Atmospheric Administration, National Marine Fisheries Service
- U.S. Department of Health and Human Services, National Center for Environmental Health Centers for Disease Control and Prevention
- U.S. Department of Homeland Security
- U.S. Department of Housing and Urban Development
- U.S. Department of Interior, Bureau of Indian Affairs
- U.S. Department of Interior, Bureau of Land Management, Eastern States Office
- U.S. Department of Interior Director, USGS-FISC
- U.S. Department of Interior, National Park Service
- U.S. Department of the Interior, Natural Resources Conservation Service
- U.S. Environmental Protection Agency
- U.S. Fish and Wildlife Service

State

- FL Department of Agriculture and Consumer Services
- FL Department of Community Affairs
- FL Department of Environmental Protection
- FL Department of State, Division of Historic Resources
- FL Fish and Wildlife Conservation Commission
- Florida Inland Navigation District

Regional

- Southwest Florida Water Management District
- Tampa Bay Regional Planning Council
- Pasco County MPO

Tribal

- Miccosukee Tribe
- Mississippi Band of Choctaw Indians
- Muscogee(Creek) Nation of Oklahoma Miccosukee Tribe of Indians of Florida
- Poarch Band of Creek Indians of Alabama
- Seminole Nation of Oklahoma
- Seminole Tribe

4.3 SUMMARY OF AGENCY COMMENTS AND RESPONSES

A variety of agencies have commented on the project through their participation as Environmental Technical Advisory Members (ETDM) during the project's publication in the ETDM process. The project has been published a number of times in the ETDM process through the release of a series of Programming Screen Summary Reports (PSSR) generally between May 3, 2006 and October 30, 2008. Due to the frequent publication of the project's PSSRs, the reader is referred to the following link (<http://etdmpub.flas-estat.org/est/#>). The project ETDM reference number is 6011.

SECTION 5

PROJECT KICKOFF NEWSLETTER

A project kick-off newsletter was developed and mailed to federal, state, and local agencies, elected and appointed officials, and interested parties in February 2009. The purpose of the newsletter was to introduce the project and the study objectives. The newsletter announced the start of the project study, provided information on how to submit comments, and included the name and contact information of the Department's Project Manager.

SECTION 6

COORDINATION EFFORTS

6.1 ALTERNATIVES PUBLIC WORKSHOP NEWSLETTER/WORKSHOP

A second newsletter was mailed to property owners, appointed and elected officials, federal, state, and local agencies, and interested parties in May 2009. This newsletter announced the date, time, and location of the workshop. It also served as a notice to those property owners (pursuant to Florida Statutes 339.155) whose property falls either partly or entirely within 300 feet of the centerline of the proposed project.

An Alternatives Public Workshop was held on Wednesday, June 3 from 5:00 to 7:00 p.m. at the Zephyr Palms Event Center located at 4645 Airport Road, Zephyrhills, FL 33542. The Workshop was an opportunity for the public to comment and provide input regarding specific location, design, socio-economic effects, and environmental effects associated with the three alternatives under study.

The Alternatives Public Workshop was advertised as a quarter-page legal display (**Figure 6-1**) in the *St. Petersburg Times-Pasco Edition* on Wednesday, May 13, 2009 and on Wednesday, May 27, 2009.

The day of the Workshop, FDOT representatives and HDR staff were available between 5 p.m. and 7 p.m. to answer questions and discuss the project informally with the public. Aerial photographs, display boards, and project documents were displayed for the proposed improvements. The public information video was also shown continuously from 5:00 p.m. to 7:00 p.m.

All written comments and exhibits submitted at the Workshop, as well as those submitted via mail and postmarked by June 15, 2009 became part of the official record. The Workshop was held in accordance with 23 CFR 771 and Titles VI and VIII of the Civil Rights Acts of 1964 and 1968 and the Americans with Disabilities Act of 1990.

6.2 AGENCY COORDINATION AND LOCAL GOVERNMENT MEETINGS

During the course of the study, the FDOT held meetings with the Technical Advisory Committee, the Community Advisory Committee, and the Pasco County Metropolitan Planning Organization for this project.



US 301 (SR 39/Gall Blvd.)

From South of CR 54 (Eiland Blvd.) to the US 98 Bypass (SR 533)
Project Development & Environment (PD&E) Study
Alternatives Public Workshop

FDOT District 7, WPI Segment No: 408075 1, FAP No: 3112 020 P, Pasco County

June 3, 2009 5:00 PM to 7:00 PM

Location: Zephyr Palms Event Center

4645 Airport Road Zephyrhills, Florida 33542 (813) 779-7256

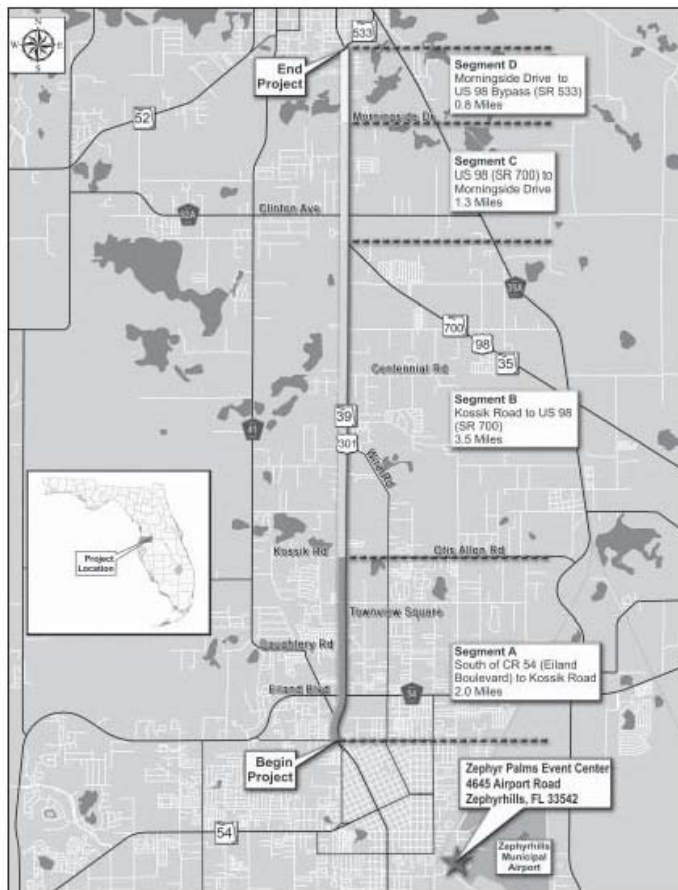
The Florida Department of Transportation (FDOT) invites you to attend and participate in an Alternatives Public Workshop regarding the ongoing PD&E Study for the proposed roadway improvements to US 301 from south of CR 54 to the US 98 Bypass in Pasco County.

The study evaluates the need for widening US 301 from a four-lane roadway to a six-lane roadway, from south of CR 54 to the US 98 Bypass, in anticipation of future traffic needs.

This workshop is being held to gather your input regarding the location, design, social, economic and environmental effects of the proposed improvements.

Department representatives will be available beginning at 5:00 p.m. to answer questions and discuss the project with attendees. Aerial photographs, project graphics illustrating the proposed improvements and estimated costs will be on display. A video presentation will also be shown.

Written comments may be submitted at the workshop or returned by mail to: Ming Gao, P.E., Intermodal Systems Development Manager, FDOT District Seven, 11201 N. McKinley Drive, MS 7-500, Tampa, Florida 33612. We request that all comments be postmarked by June 15, 2009 so that project development may continue.



Public participation is solicited without regard to race, color, national origin, age, sex, religion, disability or family status. If you have questions or require special accommodations under the Americans with Disabilities Act or if you need translation services (free of charge) please contact Manuel Santos, Project Manager at (813) 975-6173 or (800) 226-7220, at least seven days prior to the workshop.

Figure 6-1 US 301 PD&E Study Alternatives Workshop Display Ad

SECTION 7

PUBLIC HEARING

7.1 PUBLIC HEARING ADVERTISEMENTS

A Public Hearing was held on Wednesday, November 4, 2009 from 5:00 to 7:00 p.m. at the Zephyr Palms Event Center located at 4645 Airport Road, Zephyrhills, FL 33542. The Hearing was an opportunity for the public to comment and provide input regarding specific location, design, socio-economic effects, and environmental effects associated with the recommended alternative.

The Public Hearing was advertised in the *Florida Administrative Weekly* on October 9, 2009. The Hearing was also advertised as a quarter-page legal display (**Figure 7-1**) in the *St. Petersburg Times – Pasco Edition* on Wednesday, October 14, 2009 and on Wednesday, October 28, 2009

The Public Hearing newsletter was mailed on October 4, 2009. This newsletter announced the date, time, and location of the Hearing. It also served as a notice to those property owners (pursuant to Florida Statutes 339.155) whose property falls either partly or entirely within 300 feet of the centerline of the proposed project.

Project documents, including the Preliminary Engineering Report, Stormwater Management Facilities Report, Noise Study Report, Wetland Evaluation and Biological Assessment, Cultural Resource Assessment Survey, and Contamination Screening Evaluation Report, were available for public review from October 15, 2009 through November 16, 2009 at the Zephyrhills Public Library, 5347 8th Street, Zephyrhills, FL 33542.

The day of the Public Hearing, FDOT representatives and HDR staff were available between 5:00 p.m. and 6:00 p.m. to answer questions and discuss the project informally. Aerial photographs, display boards, and project documents were displayed showing the proposed improvements. The Public Information Video was shown continuously until 6:00 p.m. at which time the FDOT representative began the formal portion of the Hearing. Immediately following the formal portion of the Hearing, the informal open house resumed and continued until 7:00 p.m.



PUBLIC HEARING for US 301 (SR 39/Gall Blvd.)

from south of CR 54 (Eiland Blvd.) to the US 98 Bypass (SR 533)

Project Development & Environment (PD&E) Study

FDOT District 7, WPI Segment No: 408075 1, FAP No: 3112 020 P, Pasco County

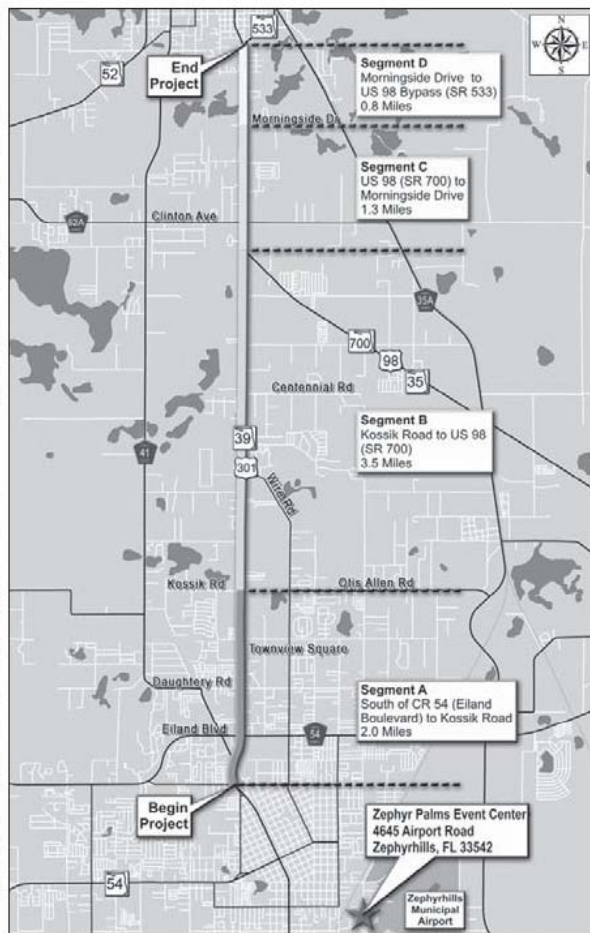
November 4, 2009 5:00 PM to 7:00 PM
Formal Portion: 6:00 PM

Location: Zephyr Palms Event Center
4645 Airport Road Zephyrhills, Florida 33542 (813) 779-7256

The Florida Department of Transportation (FDOT), District 7, will conduct a public hearing for the proposed improvements to US 301 (SR 39/Gall Blvd.) in Pasco County, Florida. The proposed improvements are to US 301 from south of CR 54 (Eiland Blvd.) to the US 98 Bypass (SR 533), for a distance of 7.6 miles.

This public hearing is being conducted to give interested persons an opportunity to express their views concerning the location, conceptual design, and social, economic, and environmental effects of the proposed improvements and in accordance with Federal Executive Orders 11990 and 11988. The project proposes widening US 301 from four lanes to six lanes, from south of CR 54 to north of Kossik Road and providing other improvements such as median modifications and intersection improvements from north of Kossik Road to the US 98 Bypass.

The draft project documents and other information will be available for review from October 15, 2009 through November 16, 2009, at the FDOT District 7 (address below) and Zephyrhills Public Library, 5347 8th Street, Zephyrhills, Florida 33542 – phone: (813) 780-0064. Persons wishing to submit written statements or other exhibits, in place of or in addition to oral statements, may do so at the hearing or by sending them to: Ming Gao, P.E., Intermodal Systems Development Manager, FDOT District Seven, 11201 N. McKinley Drive, MS 7-500, Tampa, Florida 33612. All exhibits or statements postmarked on or before November 16, 2009 will become a part of the public hearing record.



Public participation is solicited without regard to race, color, national origin, age, sex, religion, disability or family status. Persons with disabilities who require special accommodations under the Americans with Disabilities Act or persons who require translation services (free of charge) please contact Manuel Santos, Project Manager at (813) 975-6173 or (800) 226-7220, at least seven days prior to the meeting.

Figure 7-1 US 19 PD&E Study Public Hearing Legal Display Ad

During the Hearing's open house, a court reporter was available to receive comments in a one-on-one setting. In addition, verbal statements, written statements and exhibits submitted at the Hearing became part of the official Public Hearing record. Comments submitted via mail were to be postmarked by November 16, 2009 to become part of the official Public Hearing record.

Ninety three (45) people signed in at the Public Hearing. One (1) verbal comment was given to the court reporter prior the formal portion of the Hearing, three (3) people commented on the project during the formal portion of the Hearing (one person spoke twice with two comments), three (3) written comments were received at the hearing and one (1) written comment was received on November 20, 2009, after the official comment period closed. A copy of the official Public Hearing transcript is provided in **Appendix C**.

The Public Hearing was held in accordance with 23 CFR 771 and Titles VI and VIII of the Civil Rights Acts of 1964 and 1968 and the Americans with Disabilities Act of 1990.

7.2 PUBLIC HEARING PROCESS COMMENTS

A total of nine (9) comments were received during the Public Hearing process for this project, five (5) verbal, and four (4) written. The comments were primarily directed at individual concerns regarding access to business and residential properties, as well as funding and when the project would start.

7.2.1 Verbal and Written Comments Received During Formal Comment Period

Some persons made comments on more than one issue during the formal comment period. Therefore, numbers of comments may not match numbers of persons commenting.

Verbal Comments Received at Public Hearing:

All verbal comments received at the Public Hearing appear in the official Public Hearing transcript shown in Appendix C.

Written Comments Received at Public Hearing:

Comment: The City of Zephyrhills has an approved multi-purpose trail planned for the west side of U.S. 301 along the entire PD&E area. Staff recommends the 5' sidewalk presently shown be increased to accommodate the trail.

The City will submit trail plans. Also, Pasco County's Trail should be considered for segments B and C.

Comment: I am very concerned about eliminating the turn lane in front of store (Sonny's Discount Appliances). It needs to be reconsidered.

Comment: Request maps of the 301 project at Route 54.

Comments Received by Mail:

Only one comment was received by mail and it was postmarked after the November 16, 2009 deadline. The comment is included in Appendix B.

APPENDIX A
Advance Notification Package

US 301 PD&E Study
WPI No.: 408075 1
FAP No.: 3112 020 P

Advance Notification Package (abridged)

Project #6011 - US 301 (SR 39) FROM CR 54 TO US 98 BYPASS

Programming Screen - Published on 10/30/2008

Printed on: 10/30/2008

Table of Contents

Cover Letter	1
Transmittal List	5
Form SF-424: Application for Federal Assistance	6
Location Maps	9
Location Maps	10
Alternative #1	10
Project Aerial Map	10
Project Base Map	11
Project County Location Map	12
Fact Sheet	13
Disclaimer	13
Project Description	13
Community-Desired Features (No Data Available)	19
Screening Summary Overview	19
Environmental Information	20
Additional Information	26



Florida Department of Transportation

CHARLIE CRIST
GOVERNOR

11201 N. McKinley Drive
Tampa, FL 33612-6456

STEPHANIE C. KOPELOUSOS
SECRETARY

October 29, 2008

Ms. Lauren Milligan, Environmental Manager
Florida State Clearinghouse
Department of Environmental Protection
3900 Commonwealth Boulevard
Mail Station 47
Tallahassee, FL 32399-3000

Subject: WPI Segment No: 408075-1
Federal Aid Project No. 3112020 P
SR 39 (US 301) PD&E Study / Advance Notification / Pasco County, Florida

The Florida Department of Transportation (FDOT), is conducting a Project Development and Environment (PD&E) Study for SR 39 from CR 54/Eiland Boulevard to SR 533 (US 98 Bypass) (southernmost intersection) in Pasco County.

The attached Advance Notification (AN) package for the subject project is forwarded to your office for processing through the appropriate State agencies in accordance with Executive Order 95-359. Distribution to local, regional and Federal agencies is being made as noted.

Although more specific comments will be solicited during the permit coordination process, we request that permitting and permit reviewing agencies review the attached information and furnish us with any general comments they consider pertinent at this time.

This project was evaluated in the Programming Screen of the Efficient Transportation Decision Making (ETDM) process (ETDM project # 6011) in early 2008. As part of the ETDM process, the following agencies provided review comments:

- Federal Highway Administration
- US Department of Commerce, National Oceanic and Atmospheric Administration, National Marine Fisheries Service
- US Army Corps of Engineers
- US Environmental Protection Agency
- US Fish and Wildlife Service
- Southwest Florida Water Management District
- Florida Department of Community Affairs

- Florida Department of Environmental Protection
- Florida Fish and Wildlife Conservation Commission
- Florida Department of State, State Historic Preservation Officer (SHPO)
- Miccosukee Tribe

Copies of these comments are available for viewing on the public ETDM web site at <http://etdmpub.flh-estat.org.est>. Public comments have been received prior to the initiation of this PD&E Study. The following project is within this project's study area and was re-published in August of 2008:

- ETDM # 9871 – Overpass Road from Old Pasco Road to US 301

This proposed project is to be implemented with federal funds and as part of the ETDM process, the Federal Highway Administration has determined this project to be a Type 2 Categorical Exclusion. The PD&E Study will evaluate adding two lanes to the existing four lane roadway and also consider how to integrate Pasco County's proposed frontage road system into the proposed project. Please provide an updated consistency review for this project in accordance with the State's Coastal Zone Management Program.

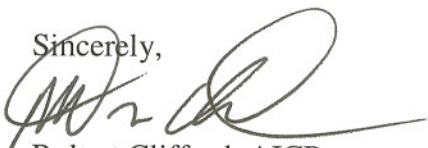
In addition, please review this proposed project's consistency, to the maximum extent feasible, with the approved Comprehensive Plans adopted by the appropriate local governments pursuant to Chapter 163, Florida Statutes.

We are looking forward to receiving your comments on the proposed project within 45 days. Should additional review time be required, a written request for an extension of time must be submitted to our office within the initial 45-day comment period. Your comments should be addressed to:

Robert Clifford, AICP
 Department Head, Intermodal Systems Development
 Florida Department of Transportation, District 7
 11201 N. McKinley Drive/MS 7-500
 Tampa, FL 33612-6456

Your expeditious handling of this notice is appreciated.

Sincerely,



Robert Clifford, AICP
 Department Head, Intermodal Systems Development

Attachments

Agency	Contact	Title	Email
FEDERAL AGENCIES			
US Department of Transportation – Federal Highway Administration	Nahir DeTizio	District Transportation Engineer	nahir.detizio@fhwa.dot.gov
US Department of Transportation – Federal Aviation Administration	c/o Mr. Dean Stringer	Airports District Office	Send hard copy
US Department of Transportation – Federal Transit Administration, Seventh District	Tajsha LaShore	Transportation Program Specialist	Tajsha.Lashore@fta.dot.gov
US Department of Transportation – Federal Railroad Administration, Region 3 – Office of Economic Analysis	Fred Dennin	Regional Administrator	Send hard copy
US Department of Agriculture – Forest Service	Marsha Kearney	Forest Supervisor	mkearney@fs.fed.us
US Department of Health and Human Services – National Center for Environmental Health & Injury Prevention & Control	Henry Falk	Director	Send hard copy
US Department of Homeland Security – Federal Emergency Management Agency	Brad Loar	Division Chief	Brad.Loar@dhs.gov
US Department of Housing and Urban Development	Linda Poythress	Regional Environmental Officer	Linda.P.Poythress@hud.gov
US Department of Interior – Fish & Wildlife Service	Todd Samuel Mecklenborg	Biologist	todd_mecklenborg@fws.gov
US Department of Interior – Bureau of Indian Affairs	W. Patrick Ragsdale	Director	Patrick.Ragsdale@bia.gov
US Department of Interior – Bureau of Land Management, Eastern States Office	Alan Barron Bail	Associate State Director	Alan_Barron_Bail@blm.gov
US Department of Interior – US Geological Survey - Florida Integrated Science Center, Orlando	Barry Rosen	Director	brosen@usgs.gov
US Department of Interior – National Parks Service, Southeast Regional Office	Anita Barnett		Anita_Barnett@nps.gov
US Army Corps of Engineers	John Fellows	Biologist	john.p.fellows@usace.army.mil
US Environmental Protection Agency, Region IV	Madolyn Dominy	Coordinator	dominy.madolyn@epa.gov
STATE AGENCIES			
Florida Department of Transportation – Environmental Management Office	Marjorie Bixby	Manager	marjorie.bixby@dot.state.fl.us
Florida Department of Transportation – Federal Aid Management	James Jobe	Manager	james.jobe@dot.state.fl.us
Florida Department of State – Division of Historical Resources	Fred Gaske	State Historic Preservation Officer	fgaske@dos.state.fl.us
Florida Department of State	Sherry Anderson	Architectural Historian	sjanderson@dos.state.fl.us
Florida Fish and Wildlife Conservation Commission	Scott Sanders	Exotic Species Lead	scott.sanders@myfwc.com
Florida Department of Environmental Protection	Lauren P. Milligan	Environmental Manager	Lauren.Milligan@dep.state.fl.us
Florida Department of Community Affairs	Gary Donaldson	Senior Planner	gary.donaldson@dca.state.fl.us
Florida Department of Agriculture and Consumer Services	Dennis Hardin	Program Coordinator	hardind@doacs.state.fl.us
REGIONAL & LOCAL AGENCIES			
Southwest Florida Water Management	C. Lynne Miller	District ETAT Representative	lynn.miller@swfwmd.state.fl.us
Tampa Bay Regional Planning Council	John M. Meyer	District ETAT Representative	johnm@tbrpc.org
Pasco County Metropolitan Planning Organization	Doug Uden	Executive Director	duden@pascocountyfl.net

Agency	Contact	Title	Email
TRIBAL OFFICIALS			
Miccosukee Tribe of Indians of Florida	Billy Cypress Steve Terry	Attn: Chairman Land Resource Manager	stevet@miccosukeetribe.com
Muskogee (Creek) Nation of Oklahoma	A.D. Ellis Joyce Bear	Attn: Principal Chief Historic Preservation Manager	Send hard copy
Poarch Band of Creek Indians	Buford Rolin Mr. Robert Thrower	Attn: Chairperson Tribal Historic Preservation Officer	Send hard copy
Seminole Nation of Oklahoma	Enoch Kelly Haney Pare Bowlegs	Attn: Principal Chief Historic Preservation Officer	Send hard copy
Seminole Tribe of Florida, AH-TAH-THI-KI Museum	W.S. Steele	Tribal Historic Preservation Officer	wsteele@semtribe.com
Mississippi Band of Choctaw Indians	Beasley Denson Kenneth H. Carleton	Attn: Chairman Tribal Historic Preservation Officer	Send hard copy

Transmittal List

Official Transmittal List


	Organization	Name
1.	Bureau of Indian Affairs	* Office of Trust Responsibilities - Environmental Services Staff
2.	Federal Aviation Administration	* Airports District Office
3.	Federal Highway Administration	Anderson, Linda
4.	Federal Highway Administration	Kendall, Cathy
5.	Federal Highway Administration	Williams, Marvin L.
6.	Federal Transit Administration	Lashore, Tajsha
7.	FL Department of Agriculture and Consumer Services	Hardin, Dennis
8.	FL Department of Agriculture and Consumer Services	Mousel, Keith
9.	FL Department of Community Affairs	Donaldson, Gary
10.	FL Department of Community Affairs	Smith, Timothy
11.	FL Department of Environmental Protection	Milligan, Lauren P.
12.	FL Department of Environmental Protection	Stahl, Chris
13.	FL Department of State	Anderson, Sherry
14.	FL Department of State	Earnest, Samantha
15.	FL Department of State	McManus, Alyssa
16.	FL Department of State	Yates, Brian
17.	FL Fish and Wildlife Conservation Commission	Gilbert, Terry
18.	FL Fish and Wildlife Conservation Commission	Poole, MaryAnn
19.	FL Fish and Wildlife Conservation Commission	Sanders, Scott
20.	Florida Inland Navigation District	* Mr. David Roach
21.	Miccosukee Tribe	Terry, Steve
22.	Mississippi Band of Choctaw Indians	* The Honorable Mr. Beasley Denson, Chairman
23.	Muscogee(Creek) Nation of Oklahoma	* The Honorable Mr. A.D. Ellis, Principal Chief
24.	National Marine Fisheries Service	Rydene, David A.
25.	National Marine Fisheries Service	Sramek, Mark
26.	National Park Service	Barnett, Anita
27.	Natural Resources Conservation Service	Robbins, Rick A.
28.	Pasco County MPO	Lajmiri, Manny
29.	Poarch Band of Creek Indians of Alabama	* The Honorable Mr. Buford Rolin, Chairperson
30.	Seminole Nation of Oklahoma	* The Honorable Mr. Enoch Kelly Haney, Principal Chief
31.	Seminole Tribe	Steele, Willard
32.	Southwest Florida Water Management District	Miller, C. L.
33.	Southwest Florida Water Management District	O'Neil, Paul W.
34.	Tampa Bay Regional Planning Council	Cooper, Suzanne T.
35.	Tampa Bay Regional Planning Council	Meyer, John M.
36.	US Army Corps of Engineers	Fellows, John

37.	US Coast Guard	Overton, Randy
38.	US Department of Health and Human Services	* National Center for Environmental Health Centers for Disease Control and Prevention
39.	US Department of Housing and Urban Development	* Regional Environmental Officer
40.	US Department of Interior	* Bureau of Land Management, Eastern States Office
41.	US Department of Interior	Director, USGS-FISC
42.	US Environmental Protection Agency	Dominy, Madolyn
43.	US Fish and Wildlife Service	Mecklenborg, Todd S.

* Hardcopy recipient

Application for Federal Assistance SF-424		Version 02
*1. Type of Submission: <input type="checkbox"/> Preapplication <input checked="" type="checkbox"/> Application <input type="checkbox"/> Changed/Corrected Application	*2. Type of Application * If Revision, select appropriate letter(s) <input checked="" type="checkbox"/> New <input type="checkbox"/> Continuation *Other (Specify) _____ <input type="checkbox"/> Revision	
3. Date Received: 4. Applicant Identifier: 408075-1		
5a. Federal Entity Identifier:		*5b. Federal Award Identifier:
State Use Only:		
6. Date Received by State:		7. State Application Identifier:
8. APPLICANT INFORMATION:		
*a. Legal Name: Florida Department of Transportation		
*b. Employer/Taxpayer Identification Number (EIN/TIN): 59-6001874		*c. Organizational DUNS:
d. Address:		
*Street 1: 605 Suwanee Street Street 2: _____ *City: Tallahassee County: Leon *State: Florida Province: _____ *Country: _____ *Zip / Postal Code 32399-0450		
e. Organizational Unit:		
Department Name: District 7		Division Name: Intermodal Systems Development
f. Name and contact information of person to be contacted on matters involving this application:		
Prefix: Mr. *First Name: Robert Middle Name: _____ *Last Name: Clifford Suffix: AICP Title: Intermodal Systems Development Department Head Organizational Affiliation: _____ *Telephone Number: 813 975-6000 Fax Number: _____ *Email: Robert.Clifford@dot.state.fl.us		

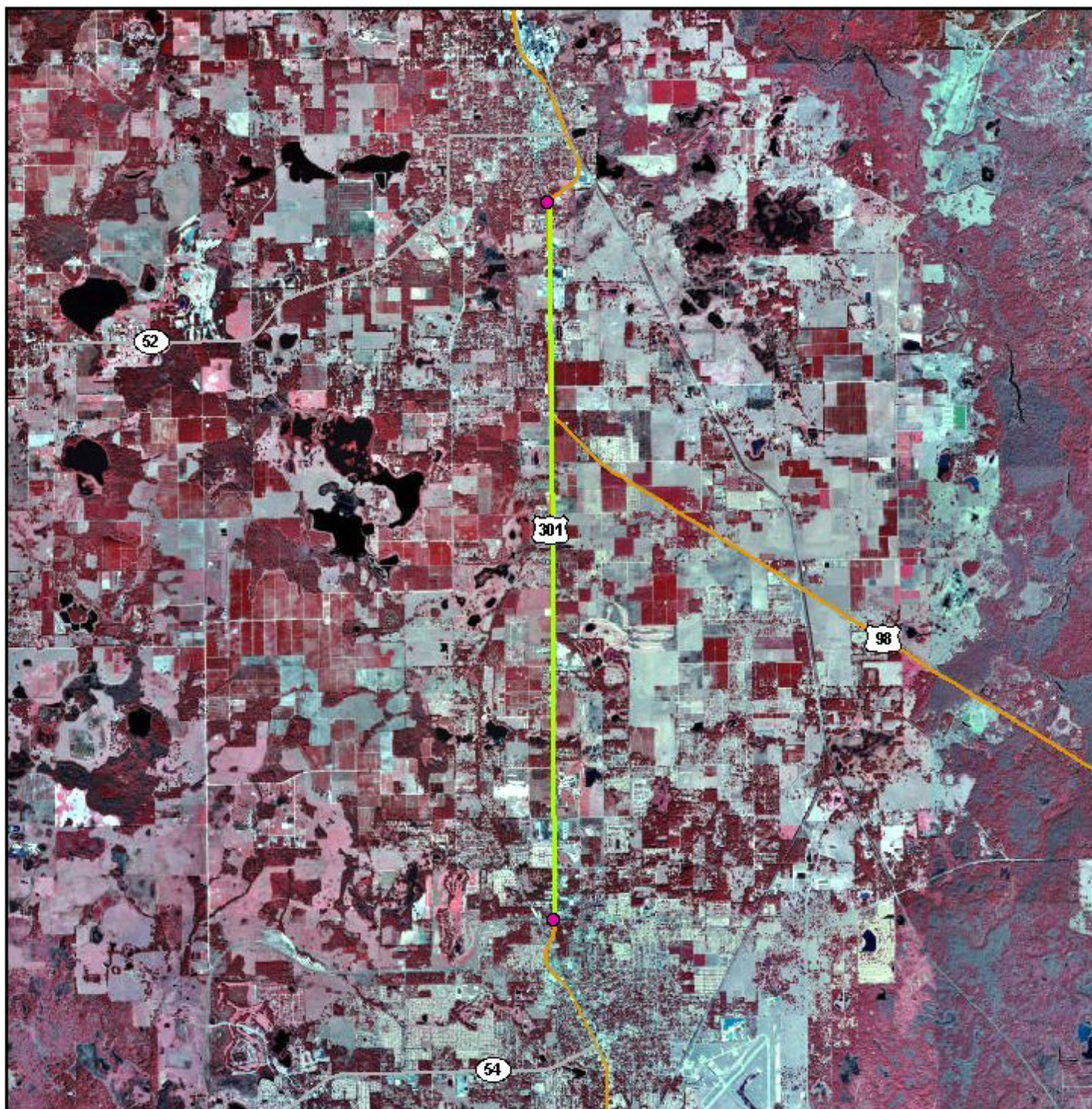
Application for Federal Assistance SF-424	Version 02
*9. Type of Applicant 1: Select Applicant Type: A.State Government Type of Applicant 2: Select Applicant Type: Type of Applicant 3: Select Applicant Type: *Other (Specify)	
*10 Name of Federal Agency: US DOT	
11. Catalog of Federal Domestic Assistance Number: <u>20-205</u> CFDA Title: <u>Highway Planning and Construction</u>	
*12 Funding Opportunity Number: *Title: 	
13. Competition Identification Number: Title: 	
14. Areas Affected by Project (Cities, Counties, States, etc.): Pasco County, Florida	
*15. Descriptive Title of Applicant's Project: SR 39 (US 301) From CR 54/Eiland Blvd. to SR 533 (US 98) (southernmost intersection)	

Application for Federal Assistance SF-424		Version 02
16. Congressional Districts Of:		
*a. Applicant:	*b. Program/Project:	
17. Proposed Project:		
*a. Start Date: 7/08	*b. End Date:	
18. Estimated Funding (\$):		
*a. Federal	6,330,000	
*b. Applicant	_____	
*c. State	_____	
*d. Local	_____	
*e. Other	_____	
*f. Program Income	_____	
*g. TOTAL	6,330,000	
*19. Is Application Subject to Review By State Under Executive Order 12372 Process?		
<input checked="" type="checkbox"/> a. This application was made available to the State under the Executive Order 12372 Process for review on <u>10/21/08</u>		
<input type="checkbox"/> b. Program is subject to E.O. 12372 but has not been selected by the State for review.		
<input type="checkbox"/> c. Program is not covered by E. O. 12372		
*20. Is the Applicant Delinquent On Any Federal Debt? (If "Yes", provide explanation.)		
<input type="checkbox"/> Yes <input checked="" type="checkbox"/> No		
21. *By signing this application, I certify (1) to the statements contained in the list of certifications** and (2) that the statements herein are true, complete and accurate to the best of my knowledge. I also provide the required assurances** and agree to comply with any resulting terms if I accept an award. I am aware that any false, fictitious, or fraudulent statements or claims may subject me to criminal, civil, or administrative penalties. (U. S. Code, Title 218, Section 1001)		
<input checked="" type="checkbox"/> ** I AGREE		
** The list of certifications and assurances, or an internet site where you may obtain this list, is contained in the announcement or agency specific instructions		
Authorized Representative:		
Prefix: Mr.	*First Name: Robert	
Middle Name:	_____	
*Last Name: Clifford	_____	
Suffix: AICP	_____	
*Title: Intermodal Systems Development Department Head		
*Telephone Number: 813 975-6000	Fax Number:	
* Email: Robert.Clifford@dot.state.fl.us		
*Signature of Authorized Representative:		*Date Signed: 28 Oct 08

Authorized for Local Reproduction

Standard Form 424 (Revised 10/2005)
Prescribed by OMB Circular A-102

6011 US 301 (SR 39) FROM CR 54 TO US 98 BYPASS , Alternative #1 **CR 54 to US 98 BYPASS**



0 3 Miles

Project Aerial Map

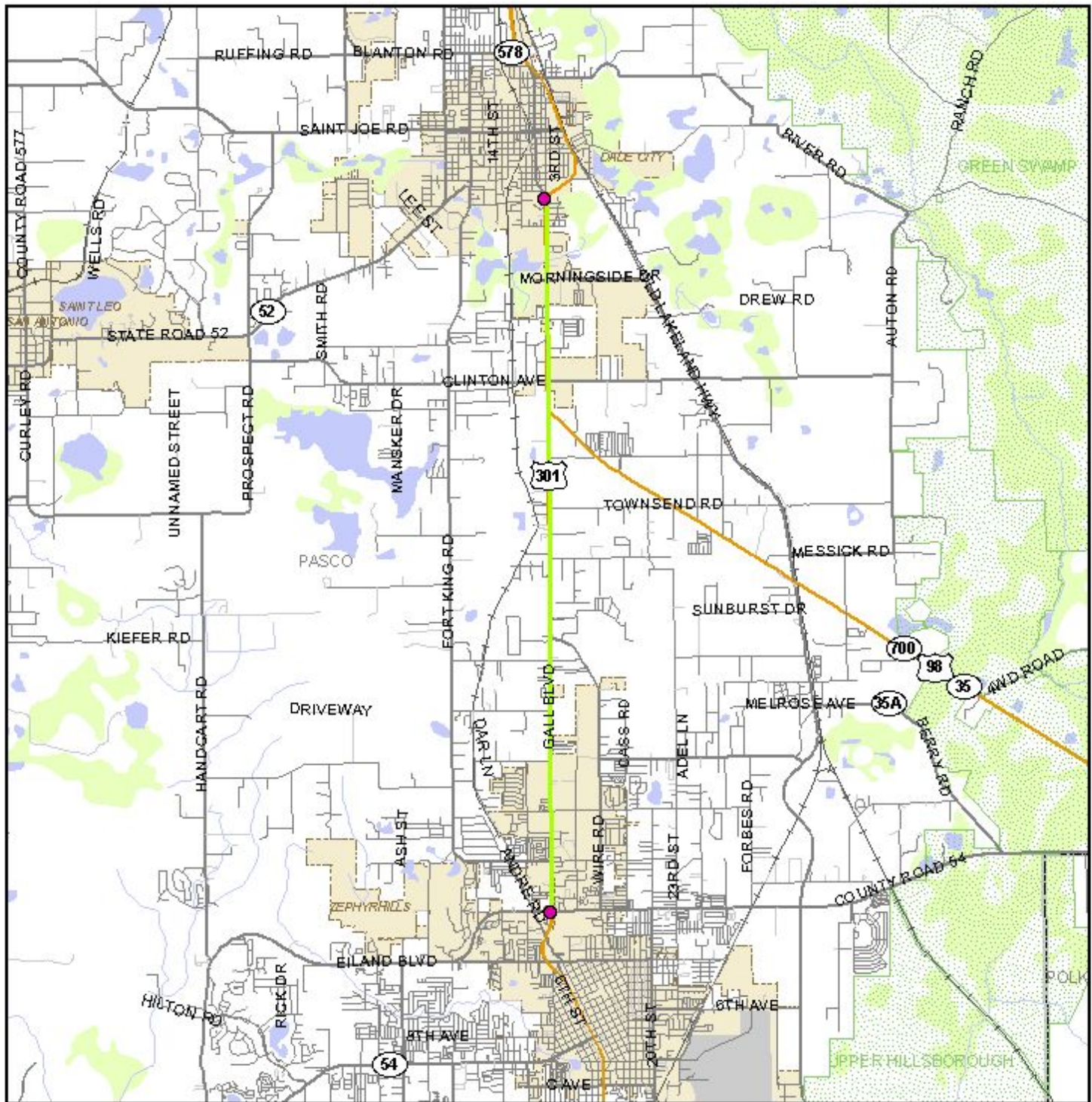


Data Sources:
 Highways - Geographic Data Technology, Inc.
 Digital Orthophotograph - US Geological Survey

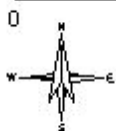
- ETDM Alternative Point
- ETDM Alternative Terminus
- ETDM Alternative Segment
- ETDM Alternative Polygon
- Primary and Limited Access Highway
- Secondary, Unlimited Access Highway
- Other Highway Feature

Map Generated on: 10/28/2008

6011 US 301 (SR 39) FROM CR 54 TO US 98 BYPASS , Alternative #1 CR 54 to US 98 BYPASS



Project Location Map

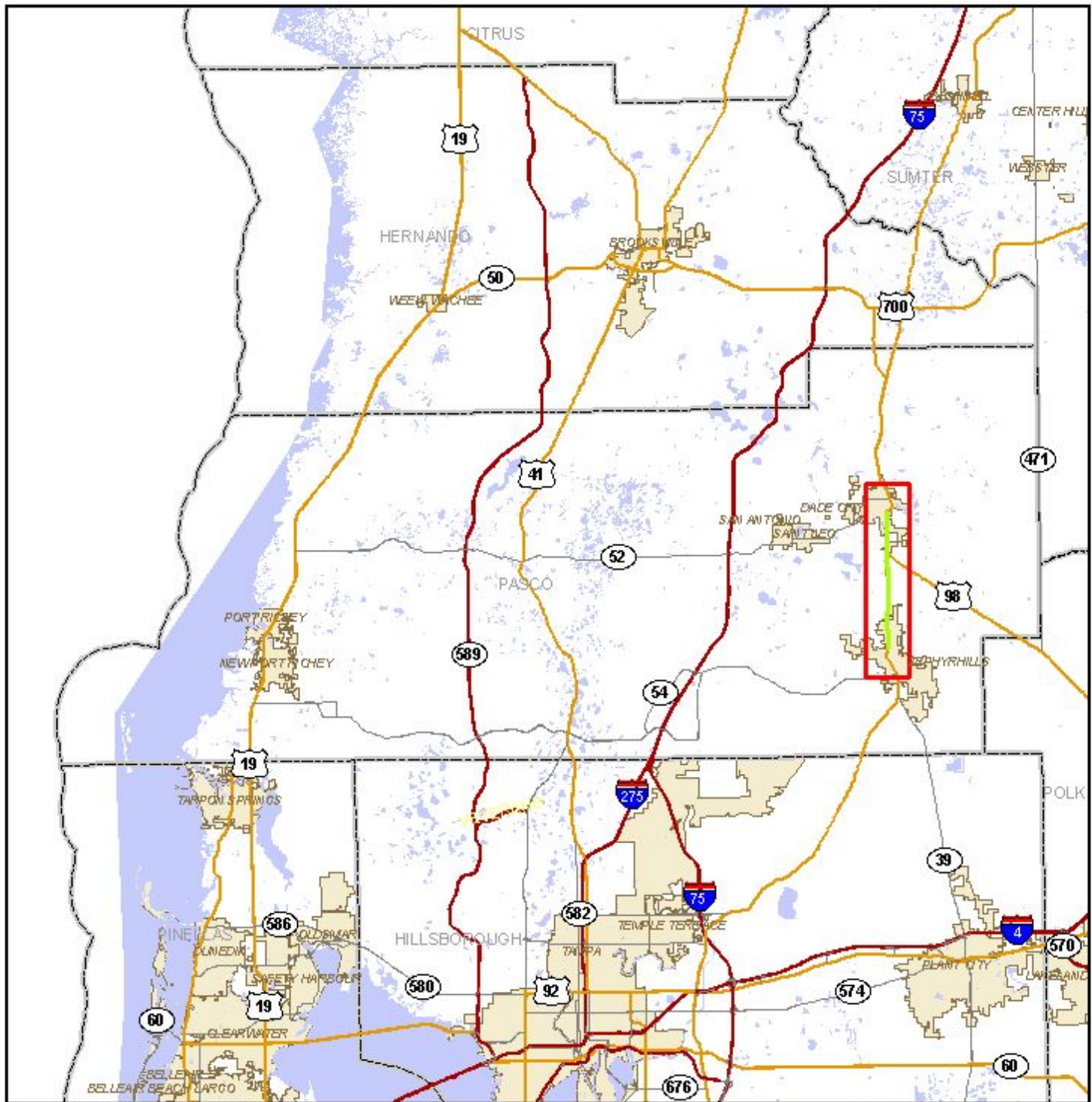


Data Sources:
Geographic Data Technology, Inc.
US Geological Survey
US Census Bureau
County Property Appraisers
Florida Natural Areas Inventory

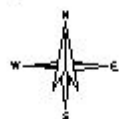
- | | | |
|-----------------------------|---------------------------------------|---------------------|
| ● ETDM Alternative Point | ■ Managed Conservation Lands | — Toll Road |
| ● ETDM Alternative Terminus | — Primary and Limited Access Highway | — Railroad |
| — ETDM Alternative Segment | — Secondary, Unlimited Access Highway | ■ Airport |
| ■ ETDM Alternative Polygon | — Connecting Road | ■ City Limits |
| — River, Stream or Canal | — Local Road or Trail | ■ County Boundaries |
| ■ Water Body | — Other Roadway Feature | |
| ■ Swamp/Marsh | | |

Map Generated on: 10/28/2008

6011 US 301 (SR 39) FROM CR 54 TO US 98 BYPASS , Alternative #1 CR 54 to US 98 BYPASS



County Location Map



Data Sources:
Geographic Data Technology, Inc.
US Geological Survey
US Census Bureau
County Property Appraisers

- ETDM Alternative Point
- ETDM Alternative Segment
- ETDM Alternative Polygon
- Water Body
- City Limit
- County Boundary
- Primary and Limited Access Highway
- Secondary, Unlimited Access Highway
- Other Highway Feature
- Project Extent

Map Generated on: 10/28/2008

DISCLAIMER: The Fact Sheet data consists of the most up-to-date information available at the time the Advance Notification Package is published. Updates to this information may be found on the ETDM website at <http://etdmpub.fl.a-etat.org>

Special Note: Please be aware of the selected Milestone date when viewing project data on the ETDM website. Snapshots of project and analysis data have been taken for Project #6011 at various points throughout the project's life-cycle. On the website these **Project Milestone Dates** are listed in the the project header immediately after the project contact information. Click on any of the dates listed to view the information available on that date.

Project Description			
6011 - US 301 (SR 39) FROM CR 54 TO US 98 BYPASS			
District	District 7	Phase	Programming Screen
County	Pasco County	From	CR 54
Planning Organization	FDOT District 7	To	US 98 BYPASS
Plan ID		Financial Management No.	
Federal Involvement	Federal Permit Federal Action Federal Funding		
Contact Name / Phone	Manuel Santos (813) 975-6173	Contact Email	manuel.santos@dot.state.fl.us

Project Description Data
Description Statement
<p>Note: The Purpose and Need Statement has been updated to address comments received from DCA concerning project consistency. Additional information has been included in the Plan Consistency section to address their concerns.</p> <p>This project is proposed to improve the operational capacity of existing US 301 by adding two-lane reverse frontage roads to carry local traffic or by widening the existing facility to six lanes. US 301, within the study area, is a high speed, four-lane divided rural roadway that connects the cities of Zephyrhills and Dade City. Within the proposed project limits, there are seven signalized intersections.</p>
Purpose and Need Statement
<p>Note: The Purpose and Need Statement has been updated to address comments received from DCA concerning project consistency. Additional information has been included in the Plan Consistency section to address their concerns.</p> <p>Regional Connectivity</p> <p>US 301(SR 39) is a major north-south arterial located in eastern Pasco County. It is a truck route and provides excellent north-south access to area distribution centers. US 301 is an important connection to the regional and statewide transportation network that links the Tampa Bay region to the remainder of the state and the nation. US 301 was identified as a regional roadway by the West Central Florida MPOs Chairs Coordinating Committee (CCC) and included in the Regional Roadway Network.</p> <p>Plan Consistency</p> <p>This project is generally consistent with the Transportation Element of the Pasco County Local Government Comprehensive Plan adopted June 27, 2006 and last revised in September 2006. The map depicting Future Number of Lanes (2025), Map #7-22, included in the Comprehensive Plan indicates a need for six lanes from CR 54 to CR 530 (Ottis Allen Road), and four lanes from that point to the northern limits of the project (US 98 Bypass). Even though Map #7-22 contained in the Comprehensive Plan does not specifically reflect the frontage roads within the limits of the four-lanes, it is addressed in another section of the Comprehensive Plan. Table 7-4a, which is entitled Pasco County Corridor Preservation Table indicates that US 301, within the Study limits, is currently an urban four-lane facility with six-lanes proposed in the future (buildout). It is also noted on Table 7-4a that when right-of-way is not sufficient for six-lanes, the alternative should be four-lanes with frontage roads.</p> <p>The Pasco MPOs Long Range Transportation Plan (LRTP) update, Cost Affordable Plan, is consistent in that it indicates the same number of lanes within identical project limits. The LRTP 2025 Needs Plan reflects a need for six lanes from CR 54 to CR 530, and four lanes with two, two -lane reverse frontage roads from that point north to the US 98 Bypass.</p> <p>The scope of the PD&E study will be to improve the operational capacity of existing US 301 by adding two-lane reverse frontage roads to carry localized traffic or by widening the existing facility to six lanes. Based on the concepts that are being carried into the PD&E study, it appears they are consistent with the Pasco County Comprehensive Plan and the MPOs Cost Affordable Plan which came out of the LRTP update.</p> <p>Emergency Evacuation</p> <p>US 301 is designated as an emergency evacuation route.</p>

Future Population and Employment Growth in Corridor

Per the socio-economic data used in the development of the latest Long Range Transportation Plan Update (adopted December 9, 2004), the population from 2000 to 2025 is expected to grow from 11,050 to 13,927 (an increase of 2,897). Employment is also expected to increase from 7,107 to 12,455 (an increase of 5,348) within Traffic Analysis Zones adjacent to US 301 within the limits of the study. The new East Pasco Medical Center, Lowes home improvement center, and a Super Wal-Mart have recently located within the Study corridor. As a result of increased development pressures along US 301, especially between the cities of Zephyrhills and Dade City, the municipalities became concerned with preserving the operational integrity and regional functionality of US 301. Based on those concerns, a corridor study was conducted in 2002 for a seven-mile section of US 301 in Pasco County, between the City of Zephyrhills and Dade City. The study was a cooperative effort between Pasco County, the City of Zephyrhills, Dade City and the Florida Department of Transportation, District Seven. The study's primary objective was to identify preliminary access management strategies and operational improvements to preserve existing traffic operations in the future. The proposed Project Development and Environment (PD&E) Study is to consider alternatives for improving the operational capacity of US 301 as recommended in the US 301 Corridor Study, dated April 2002.

As a result of the US 301 Corridor Study, there were also recommendations regarding enhanced coordination between the four public agencies involved in the initial efforts to preserve the functionality of US 301. Specifically, the local governments involved were encouraged to closely monitor development within the study area and establish one consistent set of guidelines and objectives for US 301 that could progress into standards/ordinances to be implemented in the future.

Future Traffic

In 2003, US 301 from CR 54 to the US 98 Bypass carried between 18,200 and 27,000 vehicles per day (vpd). By 2025, US 301 within these limits is expected to reach volumes between 23,300 and 31,400 vpd. Based on the Generalized Annual Average Daily Volumes for a four-lane divided facility from the Florida Department of Transportation 2002 Quality/Level of Service Handbook, the existing level of service is B. Without the proposed improvement, the operating conditions will continue to deteriorate resulting in a lower LOS. With the proposed project to improve the operational capacity, the arterial LOS in 2025 is projected to be B. The accepted LOS standard in the study area is D. As mentioned previously, however, there are seven signalized intersections within the proposed project corridor. Currently, all of the existing intersections operate at, or better than, the LOS D standard during the PM peak hour. Also, there is at least one additional traffic signal proposed within the project limits in the future. Without access management strategies, traffic operations and/or capacity improvements within the study area, it is anticipated that certain intersection approaches will not operate at an acceptable service level and motorists will experience unacceptable delays under future conditions.

Safety/Crash Rates

The actual crash rates per million vehicle miles for this study corridor from the Florida Department of Transportation Safety Office are shown for 2001 through 2003 together with the statewide average for similar facility types.

Year Actual Statewide Average

2001 2.097 0.654

2002 2.130 0.672

2003 2.148 0.718

Safety within the US 301 corridor will be enhanced due to the additional capacity that will be provided. Roadway congestion will be reduced, thereby decreasing potential conflict with other vehicles.

Transit

As a part of the PD&E Study, coordination with transit and local government officials will occur in order to determine what multi-modal accommodations will be studied and evaluated as part of the project alternatives. This will include only existing and planned multi-modal facilities. Transit services are currently available between Zephyrhills and Dade City via US 301, with some available transit services on the eastern limits of SR 54. Route 30 is an established fixed route that provides a north/south link between the two towns via US 301. This route, which has one-hour headways, begins at 7:15 a.m. and ends at 5 p.m., Monday through Friday. The only transit improvement proposed within the study corridor is the installation of bus shelters at needed locations. Other transit enhancements that are expected over the next decade include expanded hours/days of service, and increased connectivity with additional local and express service routes.

Access to Intermodal Facilities and Freight Activity Centers

Access to intermodal facilities and movement of goods and freight are important considerations in the development of the Pasco County transportation system. The MPOs 2025 Cost Affordable Plan identifies US 301 as a future truck route, which are routes that are expected to carry the majority of freight and goods in Pasco County by the year 2025. Improvements to US 301 will also enhance access to activity centers in the area, and movement of freight in eastern Pasco County.

Relief to Parallel Facilities

The planned widening of US 301 is part of an overall plan to improve access and relieve traffic congestion on such parallel facilities as I-75 and US 41. Safety, emergency access, and truck access will all be enhanced through this improvement.

Bikeways and Sidewalks

Integration of bicycle facilities and sidewalks are planned on all County and State road projects, for new roads, the widening of existing roads, and the resurfacing of State roads. These projects are planned to be constructed to include a four-foot wide paved shoulder. The referenced segment of US 301 is designated in the MPOs Cost Affordable Plan for bicycle improvements to be implemented between the years of 2004 and 2025.

Summary of Public Comments

There was no specific comment received for US 301 from the public during development of Pasco Countys last Long Range Transportation Plan, adopted December of 2004, but during the two special workshops held to solicit comments from the under-served/ under-represented, several general comments/needs were made in regard to transit and are listed below:

- 1- Expansion of existing bus routes
- 2- Addition of new bus routes
- 3- Addition of weekend bus routes

Numerous interviews were conducted with the public during the FDOT field review for Sociocultural Effects on August 8, 2006. Based on these interviews, the general consensus of the public appears to be in favor of the project. As summary of the comments received are as follows:

Interviews with the general public:

Traffic is very bad in the winter because of snow birds.

Many people are walking and biking along the side of the road.

There needs to be a light at the Florida Hospital.

The Super Wal-Mart on the north side of Zephyrhills on US 301 needs to have a light because it is a high accident area.

Interview with the Dade City Chamber of Commerce:

October through April has the most traffic.

Community is not happy with SR 52.

Want planning of County roadways to be ahead of the growth and traffic, not behind it.

Much of the croplands and pasturelands near Dade City have been sold for development.

Consistency

- Consistent with Air Quality Conformity.
- Consistency information for Coastal Zone Management Program is not available.
- Consistent with Local Government Comp Plan.
 - Comment: Though the Department has determined that this project is consistent with the applicable local government comprehensive plan as described in the ETDM Project Description, the project may also encourage urban sprawl.
 - Submitted By: FDOT District 7
 - Comment Date: 2008-10-08 14:00:25.0
- Consistent with MPO Goals and Objectives.

Lead Agency

Federal Highway Administration

Exempted Agencies

No exemptions have been assigned for this project.

Project Attachments

Date	Type	Size	Link	Name / Description
10/30/2008	Form SF-424: Application for Federal Assistance	2.55 MB	http://etdmpub.fla-etat.org/est/servlet/blobViewer?blobID=4890	SF 424 Form: SF 424 Form
11/09/2006	Ancillary Project Documentation	8 KB	http://etdmpub.fla-etat.org/est/servlet/blobViewer?blobID=390	9-15-06 Correspondence between the Florida Department of Community Affairs and the FDOT.: 9-15-06 Correspondence between the Florida Department of Community Affairs and

				the FDOT.
11/08/2006	Photo	2.71 MB	http://etdmpub.fla-etat.org/est/servlet/blobViewer?blobID=187	US 301 NB at Mockingbird MHP - Looking North: US 301 NB at Mockingbird MHP - Looking North
11/08/2006	Photo	2.73 MB	http://etdmpub.fla-etat.org/est/servlet/blobViewer?blobID=186	US 301 N of Centennial - Looking South.: US 301 N of Centennial - Looking South.
11/08/2006	Photo	2.7 MB	http://etdmpub.fla-etat.org/est/servlet/blobViewer?blobID=185	US 301 at DeSoto Marker 2 - Looking South: US 301 at DeSoto Marker 2 - Looking South
11/08/2006	Photo	2.64 MB	http://etdmpub.fla-etat.org/est/servlet/blobViewer?blobID=184	US 301 at DeSoto Marker - Looking South: US 301 at DeSoto Marker - Looking South
11/08/2006	Photo	2.74 MB	http://etdmpub.fla-etat.org/est/servlet/blobViewer?blobID=183	US 301 at DeSoto Marker - Looking North: US 301 at DeSoto Marker - Looking North
11/08/2006	Photo	2.94 MB	http://etdmpub.fla-etat.org/est/servlet/blobViewer?blobID=182	US 301 at cemetery 2 - Looking South : US 301 at cemetery 2 - Looking South
11/08/2006	Photo	2.5 MB	http://etdmpub.fla-etat.org/est/servlet/blobViewer?blobID=181	US 301 at cemetery - Looking South : US 301 at cemetery - Looking South
11/08/2006	Photo	2.72 MB	http://etdmpub.fla-etat.org/est/servlet/blobViewer?blobID=389	US 301 and US 98 intersection 2 - Looking SE: US 301 and US 98 intersection 2 - Looking SE
11/08/2006	Photo	2.64 MB	http://etdmpub.fla-etat.org/est/servlet/blobViewer?blobID=388	US 301 and US 98 Intersection - Looking SE: US 301 and US 98 Intersection - Looking SE
11/08/2006	Photo	2.8 MB	http://etdmpub.fla-etat.org/est/servlet/blobViewer?blobID=387	Spanish Trails MHP acrosss fr hospital - Looking East: Spanish Trails MHP acrosss fr hospital - Looking East
11/08/2006	Photo	168 KB	http://etdmpub.fla-etat.org/est/servlet/blobViewer?blobID=386	Pedestrian on US 301 - Looking South.: Pedestrian on US 301 - Looking South.
11/08/2006	Photo	2.84 MB	http://etdmpub.fla-etat.org/est/servlet/blobViewer?blobID=385	Pastureland on W side of US 301 - Looking West: Pastureland on W side of US 301 - Looking West
11/08/2006	Photo	3.04 MB	http://etdmpub.fla-etat.org/est/servlet/blobViewer?blobID=384	Mockingbird MHP -

				Looking North: Mockingbird MHP - Looking North
11/08/2006	Photo	2.46 MB	http://etdmpub.fla-etat.org/est/servlet/blobViewer?blobID=383	Highlands at Scotland Yards Community Sign - Looking NW: Highlands at Scotland Yards Community Sign - Looking NW
11/08/2006	Photo	2.32 MB	http://etdmpub.fla-etat.org/est/servlet/blobViewer?blobID=382	Highlands at Scotland Yard Homes&GC - Looking West: Highlands at Scotland Yard Homes&GC - Looking West
11/08/2006	Photo	2.28 MB	http://etdmpub.fla-etat.org/est/servlet/blobViewer?blobID=381	Hercules Aquatic Ctr Pool - Looking East: Hercules Aquatic Ctr Pool - Looking East
11/08/2006	Photo	3.29 MB	http://etdmpub.fla-etat.org/est/servlet/blobViewer?blobID=380	Hercules Aquatic Center Playground - Looking East: Hercules Aquatic Center Playground - Looking East
11/08/2006	Photo	3.15 MB	http://etdmpub.fla-etat.org/est/servlet/blobViewer?blobID=379	Hercules Aq Ctr fitness trail sign - Looking SW: Hercules Aq Ctr fitness trail sign - Looking SW
11/08/2006	Photo	2.29 MB	http://etdmpub.fla-etat.org/est/servlet/blobViewer?blobID=378	Florida Hospital - Looking SW: Florida Hospital - Looking SW
11/08/2006	Photo	2.92 MB	http://etdmpub.fla-etat.org/est/servlet/blobViewer?blobID=377	DeSoto Trail Marker - Looking East: DeSoto Trail Marker - Looking East
11/08/2006	Photo	2.53 MB	http://etdmpub.fla-etat.org/est/servlet/blobViewer?blobID=180	Project photo - CR 54_US 301 Intersection - looking SE: Project photo - CR 54_US 301 Intersection - looking SE
11/08/2006	Photo	3.17 MB	http://etdmpub.fla-etat.org/est/servlet/blobViewer?blobID=25	Project photo - Chapel Hill Gardens Cemetery - looking W: Project photo - Chapel Hill Gardens Cemetery - looking W
11/08/2006	Photo	3.13 MB	http://etdmpub.fla-etat.org/est/servlet/blobViewer?blobID=24	Project photo - Bus stop at Mockingbird MHP - looking E: Project photo - Bus stop at Mockingbird MHP - looking E
8/09/2006	Corridor Report	9.11 MB	http://etdmpub.fla-etat.org/est/servlet/blobViewer?blobID=360	US 301 Corridor Study - City of Dade City to City of Zephyrhills: US 301 Corridor Study -

Alternative #1

Alternative Description

From	CR 54
To	US 98 BYPASS
Type	Widening
Status	ETDM QA/QC
Total Length	7.118 mi.
Cost	
Modes	Roadway Transit Bicycle Pedestrian

Segment Description(s)

Location and Length							
Segment No.	Name	Beginning Location	Ending Location	Length (mi.)	Roadway Id	BMP	EMP
Segment #1	US 301 (SR 39)	MILE POST 6.391	MILE POST 9.1	2.709	14050000		
Segment #2	US 301	MILE POST 9.1	MILE POST 11.34	2.24	14050000		
Segment #3	US 301	MILE POST 11.34	MILE POST 12.64	1.3	14050000		
Segment #4	US 301	MILE POST 12.64	MILE POST 13.47	0.83	14050000		
Segment #5	US 301	MILE POST 13.47	MILE POST 13.509	0.039	14050000		

Jurisdiction and Class			
Segment No.	Jurisdiction	Urban Service Area	Functional Class
Segment #1	FDOT	Out	RURAL: Principal Arterial - Other
Segment #2	FDOT	Out	RURAL: Principal Arterial - Other
Segment #3	FDOT	Out	URBAN: Minor Arterial
Segment #4	FDOT	Out	URBAN: Minor Arterial
Segment #5	FDOT	Out	URBAN: Minor Arterial

Base Conditions				
Segment No.	Year	AADT	Lanes	Config
Segment #1	2003	22000	4	Lanes Divided
Segment #2	2003	18800	4	Lanes Divided
Segment #3	2003	24000	4	Lanes Divided
Segment #4	2003	26000	4	Lanes Divided
Segment #5	2003	14700	4	Lanes Divided

Interim Plan

Segment No.	Year	AADT	Lanes	Config
Segment #1				
Segment #2				
Segment #3				
Segment #4				
Segment #5				

Needs Plan

Segment No.	Year	AADT	Lanes	Config
Segment #1	2025	31400	6	Lanes Divided
Segment #2	2025	31400	6	Lanes Divided
Segment #3	2025	31400	6	Lanes Divided
Segment #4	2025	31400	6	Lanes Divided
Segment #5	2025	31400	6	Lanes Divided

Cost Feasible Plan

Segment No.	Year	AADT	Lanes	Config
Segment #1	2025			
Segment #2	2025			
Segment #3	2025			
Segment #4	2025			
Segment #5	2025			

Funding Sources	
State	100%
Federal	0%
Local	0%
Private	0%
Other	0%

Segment No.	Unknown	Unknown
Segment #1	\$12,645,000.00	
Segment #2		X
Segment #3		X
Segment #4		X
Segment #5		X

Eliminated Alternatives	
1	Alternative 1: No Action
2	Alternative 2: No Action
3	Alternative 3: No Action
4	Alternative 4: No Action
5	Alternative 5: No Action
6	Alternative 6: No Action
7	Alternative 7: No Action
8	Alternative 8: No Action
9	Alternative 9: No Action
10	Alternative 10: No Action
11	Alternative 11: No Action
12	Alternative 12: No Action
13	Alternative 13: No Action
14	Alternative 14: No Action
15	Alternative 15: No Action
16	Alternative 16: No Action
17	Alternative 17: No Action
18	Alternative 18: No Action
19	Alternative 19: No Action
20	Alternative 20: No Action
21	Alternative 21: No Action
22	Alternative 22: No Action
23	Alternative 23: No Action
24	Alternative 24: No Action
25	Alternative 25: No Action
26	Alternative 26: No Action
27	Alternative 27: No Action
28	Alternative 28: No Action
29	Alternative 29: No Action
30	Alternative 30: No Action
31	Alternative 31: No Action
32	Alternative 32: No Action
33	Alternative 33: No Action
34	Alternative 34: No Action
35	Alternative 35: No Action
36	Alternative 36: No Action
37	Alternative 37: No Action
38	Alternative 38: No Action
39	Alternative 39: No Action
40	Alternative 40: No Action
41	Alternative 41: No Action
42	Alternative 42: No Action
43	Alternative 43: No Action
44	Alternative 44: No Action
45	Alternative 45: No Action
46	Alternative 46: No Action
47	Alternative 47: No Action
48	Alternative 48: No Action
49	Alternative 49: No Action
50	Alternative 50: No Action
51	Alternative 51: No Action
52	Alternative 52: No Action
53	Alternative 53: No Action
54	Alternative 54: No Action
55	Alternative 55: No Action
56	Alternative 56: No Action
57	Alternative 57: No Action
58	Alternative 58: No Action
59	Alternative 59: No Action
60	Alternative 60: No Action
61	Alternative 61: No Action
62	Alternative 62: No Action
63	Alternative 63: No Action
64	Alternative 64: No Action
65	Alternative 65: No Action
66	Alternative 66: No Action
67	Alternative 67: No Action
68	Alternative 68: No Action
69	Alternative 69: No Action
70	Alternative 70: No Action
71	Alternative 71: No Action
72	Alternative 72: No Action
73	Alternative 73: No Action
74	Alternative 74: No Action
75	Alternative 75: No Action
76	Alternative 76: No Action
77	Alternative 77: No Action
78	Alternative 78: No Action
79	Alternative 79: No Action
80	Alternative 80: No Action
81	Alternative 81: No Action
82	Alternative 82: No Action
83	Alternative 83: No Action
84	Alternative 84: No Action
85	Alternative 85: No Action
86	Alternative 86: No Action
87	Alternative 87: No Action
88	Alternative 88: No Action
89	Alternative 89: No Action
90	Alternative 90: No Action
91	Alternative 91: No Action
92	Alternative 92: No Action
93	Alternative 93: No Action
94	Alternative 94: No Action
95	Alternative 95: No Action
96	Alternative 96: No Action
97	Alternative 97: No Action
98	Alternative 98: No Action
99	Alternative 99: No Action
100	Alternative 100: No Action

No eliminated alternatives present.

Community-Desired Features

No Data Available

Screening Summary Overview

Evaluation of Direct Effects

	Natural	Cultural	Community
Air Quality			
Farmlands			
Floodplains			
Infrastructure			
Navigation			
Wetlands			
Aesthetics			
Economic			
Land Use			
Mobility			
Relocation			
Social			

[illegible]

Environmental Information

The following tables show results of standard data analyses that compare the locations of the project alternatives with locations of various environmental resources, as recorded in the ETDM Geographic Information System database. This report provides results for various resources within 500 feet from the center of the planned corridor. Results for additional types of resources and buffer distances may be viewed on the ETDM Environmental Screening Tool web site, or may be requested from the project contact as indicated on the Advance Notification cover letter. Public access to the ETDM Environmental Screening Tool is provided by the Florida Department of Transportation at the following web address: <http://etdmpub.flh-dot.org>

Coastal Zone Consistency Review Is Required?
YES

Navigable Waterway Crossing?
NO

Alternative #1

Alternative #1 Summary						
		0 ft.	500 ft.		1320 ft.	
Analysis Type	Date Run	Count	Count	Acres	Count	Acres
Land Uses						
District 7 Generalized Landuse GRID	10/14/2008	--	--	880.23	--	
Wetlands						
National Wetlands Inventory	10/14/2008	--	8	13.47	--	
SWFWMD Wetlands 2006	--	--	--		--	
Floodplains						
DFIRM FLOOD HAZARD ZONES	10/14/2008	--	0	0.0	--	
FEMA Flood Insurance Rate Maps 1996	5/09/2006	--	33	880.23	--	
Wildlife and Habitat						
2003 FFWCC Habitat and Landcover GRID	5/09/2006	--	--	880.23	--	

2006 SWFWMD FL Land Use and Land Cover	--	--	--	--	--
Florida Managed Areas	10/14/2008	--	0	0.0	--
Florida Natural Areas Inventory Managed Lands	5/09/2006	--	0	0.0	--
Strategic Habitat and Conservation Areas 2000	5/09/2006	--	0	0.0	--
Outstanding Florida Waters					
Other Outstanding Florida Waters	10/14/2008	--	0	0.0	--
Aquatic Preserves					
List of Aquatic Preserves	10/14/2008	--	0	0.0	--
Cultural Resources					
Field Survey Project Boundaries	10/14/2008	--	6	1004.97	--
Florida Site File Cemeteries	10/14/2008	--	0	0.0	--
Florida Site File Historic Bridges	10/14/2008	--	0	0.0	--
Florida Site File Historic Standing Structures	10/14/2008	--	10	0.0	--
Resource Groups	10/14/2008	--	1	27.66	--
Coastal Barrier Resources					
Coastal Barrier Resource System	5/09/2006	--	0	0.0	--
Contamination					
Brownfield Location Boundaries	10/14/2008	--	0	0.0	--
FDEP Off Site Contamination Notices	10/14/2008	--	0	0.0	--
National Priority List Sites	10/14/2008	--	0	0.0	--
Solid Waste Facilities	10/14/2008	--	0	0.0	--
Superfund Hazardous Waste Sites	10/14/2008	--	0	0.0	--
Toxic Release Inventory Sites	10/14/2008	--	0	0.0	--
Sole Source Aquifer					
Sole Source Aquifers	10/14/2008	--	0	0.0	--
Noise Sensitive Facilities					
Geocoded Health Care Facilities	10/14/2008	--	13	0.0	--
Geocoded Laser Facilities	10/14/2008	--	6	0.0	--
Geocoded Schools	10/14/2008	--	0	0.0	--
Essential Fish Habitat Potential					
Environmentally Sensitive Shorelines	10/14/2008	--	0	0.0	--
Florida Artificial Reefs	10/14/2008	--	0	0.0	--
Florida Reef Locations and Names	10/14/2008	--	0	0.0	--
Florida Sea Grass Bed Scar Damage	5/09/2006	--	0	0.0	--
Mangroves	10/14/2008	--	0	0.0	--
Seagrass Beds (Showing Continuous/Discontinuous)	10/14/2008	--	0	0.0	--
Submerged Lands Act	10/14/2008	--	0	0.0	--
Farmlands					
Generalized Agricultural Land Use	10/14/2008	--	16	183.29	--
Prime Farm Land	10/14/2008	--	0	0.0	--
Communities					
Census Data	10/14/2008	--	101	880.23	--
Census data Block Groups - Indicators	10/14/2008	--	9	880.24	--
County Demographics	10/14/2008	--	1	880.23	--
Recreation Areas					
Existing Recreational Trails 2005	10/14/2008	--	0	0.0	--
Florida State Parks	10/14/2008	--	0	0.0	--
Geocoded Parks	10/14/2008	--	2	0.0	--
Parcel Derived Parks	10/14/2008	--	33	18.66	--
Wild and Scenic Rivers					
Wild and Scenic Rivers	10/14/2008	--	--	0	0.0
Navigable Waterway Crossing?					
Navigable Waterway Crossings	10/14/2008	0	--	--	--

District 7 Generalized Landuse GRID - analysis run on 10/14/2008

Description	100 Ft.		200 Ft.		500 Ft.	
	Acr	Pct	Acr	Pct	Acr	Pct
ACREAGE NOT ZONED FOR AGRICULTURE			7.8	2.23%	37.2	4.22%
AGRICULTURAL	9.2	5.34%	39.7	11.43%	156.2	17.74%
INDUSTRIAL	0.8	0.49%	3.8	1.09%	17.0	1.93%
INSTITUTIONAL	1.1	0.64%	5.6	1.62%	24.1	2.73%
NO DATA AVAILABLE	137.3	79.26%	163.2	46.94%	184.3	20.94%
PUBLIC/SEMI-PUBLIC	0.1	0.04%	0.4	0.11%	3.5	0.40%
RECREATION	7.9	4.54%	9.7	2.79%	18.6	2.12%
RESIDENTIAL	3.1	1.80%	28.5	8.18%	126.4	14.36%
RETAIL/OFFICE	8.9	5.14%	61.6	17.72%	213.8	24.29%
ROW	0.2	0.11%	0.6	0.17%	2.2	0.25%
VACANT NONRESIDENTIAL	3.8	2.18%	19.9	5.71%	68.9	7.82%
VACANT RESIDENTIAL	0.8	0.47%	7.0	2.01%	28.2	3.21%

National Wetlands Inventory

<http://www.fla-etat.org/est/metadata/nwip.htm>

Wetland areas from the National Wetlands Inventory summarized by wetland system type. - analysis run on 10/14/2008

System	100 Ft.		200 Ft.		500 Ft.	
	Acr	Pct	Acr	Pct	Acr	Pct
LACUSTRINE					1.9	0.21%
PALUSTRINE	0.8	0.48%	3.4	0.98%	11.6	1.32%

FEMA Flood Insurance Rate Maps 1996

<http://www.fla-etat.org/est/metadata/fema96.htm>

FEMA Flood Insurance Rate Maps 1996 summarized by zone. See metadata for descriptions of zones. - analysis run on 5/09/2006

Zone	100 Ft.		200 Ft.		500 Ft.	
	Acr	Pct	Acr	Pct	Acr	Pct
AH	8.6	4.94%	17.4	5.01%	45.9	5.22%
X	164.6	95.06%	330.4	94.99%	834.3	94.78%

2003 FFWCC Habitat and Landcover GRID

http://www.fla-etat.org/est/metadata/gfchab_03.htm

2003 Habitat and Landcover Grid from the Florida Fish and Wildlife Conservation Commission summarized by type. Data is currently not displayed in maps. - analysis run on 5/09/2006

Description	100 Ft.		200 Ft.		500 Ft.	
	Acr	Pct	Acr	Pct	Acr	Pct
BARE SOIL/CLEARCUT	2.9	1.67%	3.6	1.03%	9.2	1.04%
CITRUS	2.5	1.41%	6.2	1.79%	45.1	5.13%
CYPRESS SWAMP			0.2	0.06%	0.2	0.03%
DRY PRAIRIES	0.5	0.26%	5.8	1.67%	25.5	2.89%
FRESHWATER MARSH AND WET PRAIRIE	0.2	0.13%	0.9	0.26%	6.9	0.79%
GRASSLAND	2.0	1.16%	2.2	0.64%	2.7	0.30%
HARDWOOD HAMMOCKS AND FORESTS			1.3	0.38%	20.1	2.28%
HARDWOOD SWAMP					0.2	0.03%
HIGH IMPACT URBAN	114.9	66.32%	212.2	61.03%	400.3	45.47%
IMPROVED PASTURE	22.5	12.98%	35.9	10.32%	104.8	11.90%
LOW IMPACT URBAN	12.2	7.07%	49.5	14.23%	146.3	16.62%
MIXED HARDWOOD-PINE FORESTS	0.5	0.26%	3.1	0.90%	20.1	2.28%
OPEN WATER	0.2	0.13%	1.6	0.45%	8.5	0.96%
OTHER AGRICULTURE	5.6	3.21%	7.8	2.24%	28.1	3.20%

Description	Acr	Pct	Acr	Pct	Acr	Pct
PINELANDS	0.5	0.26%	3.8	1.09%	27.7	3.15%
ROW/FIELD CROPS	3.6	2.06%	6.5	1.86%	13.4	1.52%
SHRUB AND BRUSHLAND	5.3	3.08%	7.1	2.05%	18.8	2.13%
SHRUB SWAMP					2.5	0.28%

Field Survey Project Boundaries

http://www.fla-etat.org/est/metadata/shpo_surveys.htm

Field Survey Project Boundaries - analysis run on 10/14/2008

Title	100 Ft.	200 Ft.	500 Ft.
PROPOSED IMPROVEMENT OF U.S. 301 FROM SR 39 SOUTH OF ZEPHYRHILLS TO CR 54 EAST, NORTH OF ZEPHYRHILLS, IN PASCO COUNTY, FLORIDA.	✓	✓	✓
CULTURAL RESOURCE ASSESSMENT SURVEY OF THE U.S. 98 DADE CITY BYPASS PROJECT DEVELOPMENT AND ENVIRONMENT (PD&E) STUDY FROM U.S. 301 SOUTH TO U.S. NORTH, PASCO COUNTY, FLORIDA	✓	✓	✓
AN ARCHAEOLOGICAL AND HISTORICAL SURVEY OF THE PROPOSED BIRD LAKE 1 TOWER LOCATION IN PASCO COUNTY, FLORIDA	✓	✓	✓
HISTORIC RESOURCES SURVEY OF EAST PASCO COUNTY	✓	✓	✓
AN ARCHAEOLOGICAL AND HISTORICAL SURVEY OF THE GORE'S DAIRY PROPERTY IN PASCO COUNTY, FLORIDA	✓	✓	✓
A CULTURAL RESOURCE ASSESSMENT SURVEY OF THE U.S. 301/ZEPHYRHILLS PROJECT DEVELOPMENT AND ENVIRONMENT (PD&E) STUDY FROM S.R. 39 TO C.R. 54, PASCO COUNTY, FLORIDA	✓	✓	✓

Florida Site File Historic Standing Structures

http://www.fla-etat.org/est/metadata/shpo_structures.htm

Historic Standing Structures recorded in the Florida State Historic Preservation Office Master Site File - analysis run on 10/14/2008

Site ID	Structure Name	100 Ft.	200 Ft.	500 Ft.
PA01199	6407-6411 GALL BLVD.			✓
PA01200	37847 EILAND BLVD.			✓
PA01207	13516 US 301		✓	✓
PA01208	13524 US 98 BYPASS		✓	✓
PA01265	38031 DIXIE AVENUE			✓
PA01266	13448 US 301	✓	✓	✓
PA01267	13420 US 301	✓	✓	✓
PA02227	COUNTRY COTTAGES		✓	✓
PA02424	FRED L. GORE OFFICES			✓
PA02425	FRED L. GORE--JUST ACQUIRED HOUSE	✓	✓	✓

Resource Groups

http://www.fla-etat.org/est/metadata/shpo_res_groups.htm

Resource Groups - analysis run on 10/14/2008

Site Name	100 Ft.	200 Ft.	500 Ft.
GORE'S DAIRY FARM	✓	✓	✓

Geocoded Health Care Facilities

http://www.fla-etat.org/est/metadata/gc_health.htm

Geocoded Health Care Facilities - analysis run on 10/14/2008

Name	Description	100 Ft.	200 Ft.	500 Ft.
EAST PASCO MEDICAL CENTER, INC.	HOSPITAL	✓	✓	✓

Name	Description	100 Ft.	200 Ft.	500 Ft.
ST LUKE'S CATARACT & LASER	OPHTHALMOLOGY	✓	✓	✓
SENIOR HOME CARE INC	HOME HEALTH AGENCY	✓	✓	✓
HOUSECALL HOME HEALTHCARE	HOME HEALTH AGENCY	✓	✓	✓
CARDIOLOGY & INTERNAL MEDICINE CENTER	INTERNAL MEDICINE	✓	✓	✓
FLORIDA MEDICAL CLINIC P A	INTERNAL MEDICINE			✓
FLORIDA MEDICAL CLINIC PA	INTERNAL MEDICINE	✓	✓	✓
FLORIDA MEDICAL CLINIC PA	INTERNAL MEDICINE		✓	✓
ZEPHYRHILLS CHILDRENS HEALTH CENTER	INTERNAL MEDICINE			✓
BAY AREA COSMETIC SURGICAL CENTER	FAMILY / GENERAL PRACTICES			✓
SOUTH FLORIDA MEDICAL GROUP	FAMILY / GENERAL PRACTICES			✓
BROOKSIDE DENTAL CARE	DENTISTS	✓	✓	✓
FAMILY DENTAL CARE	DENTISTS			✓

Geocoded Laser Facilities

http://www.fla-etat.org/est/metadata/gc_lasers.htm

Geocoded Laser Facilities - analysis run on 10/14/2008

Description	100 Ft.	200 Ft.	500 Ft.
LYKES PASCO, INC.	✓	✓	✓
EAST PASCO MEDICAL CENTER	✓	✓	✓
EAST PASCO MEDICAL CENTER	✓	✓	✓
EAST PASCO MEDICAL CENTER	✓	✓	✓
BEAUTY SECRETS MEDICAL SPA, INC.			✓
VITREOUS & RETINA CONSULTANTS P.A.	✓	✓	✓

Generalized Agricultural Land Use

http://www.fla-etat.org/est/metadata/lu_gen_ag.htm

Generalized Agricultural Land Use - analysis run on 10/14/2008

Description	500 Ft.	
	Acr	Pct
AGRICULTURAL	183.3	20.82%

Census Data

<http://www.fla-etat.org/est/metadata/cenblk.htm>

US Census Bureau data by block group. Detailed information is for each of the entire block groups that intersect an analysis area. - analysis run on 10/14/2008

	Native Hawaiian and Other Pacific Islander Alone	Females	Males	# Other Race	# Hispanic	# Asian	# Native American	# Black	# White	# Households	2000 Population
Totals	0	2397	2166	117	316	46	25	106	4223	1954	4563

Census data Block Groups - Indicators

<http://www.fla-etat.org/est/metadata/blkgrp.htm>

Census data Block Groups - Indicators - analysis run on 10/14/2008

	Speak English "Not At All"	Housing Units With No Vehicle	Housing Units With 1 Vehicle	Housing Units With 2 Vehicles	Housing Units With 3 Vehicles	Housing Units With 4 vehicles	Housing Units With 5 or More
--	----------------------------	-------------------------------	------------------------------	-------------------------------	-------------------------------	-------------------------------	------------------------------

		Available	Available	Available	Available	Available	Vehicles Available
Totals	36	445	2845	2007	574	142	38

County Demographics

<http://www.fla-etat.org/est/metadata/cntdem.htm>

2000 Census General Demographic Profile by County - analysis run on 10/14/2008

Description	# Male	# Female	Median Age	# White	# Black or African American	# American Indian, Eskimo, or ...	# Asian	# Native Hawaiian and Other P...	# Some Other Race	# Hispanic or Latino (of any r...	Total Number of Households	Average Household Size	100 Ft.	200 Ft.	500 Ft.
344765	1654 17	1793 48	44.9	3230 36	7148	1209	3251	111	5251	1960 3	1475 66	2.3			✓

Geocoded Parks

http://www.fla-etat.org/est/metadata/gc_parks.htm

Geocoded Parks - analysis run on 10/14/2008

Name	Description	100 Ft.	200 Ft.	500 Ft.
MOCKINGBIRD MOBILE HOME TRAVEL TRAILER PARK	RV PARKS AND CAMP GROUNDS		✓	✓
FLORIDA JUNIOR GOLF ASSOCIATES	GOLF COURSE	✓	✓	✓

Parcel Derived Parks

http://www.fla-etat.org/est/metadata/par_parks.htm

Parcel Derived Parks - analysis run on 10/14/2008

Description	Owner Name	100 Ft.	200 Ft.	500 Ft.
FOREST, PARK, AND RECREATIONAL AREAS	CITY OF DADE CITY	✓	✓	✓
FOREST, PARK, AND RECREATIONAL AREAS	CITY OF DADE CITY			✓
FOREST, PARK, AND RECREATIONAL AREAS	PASCO COUNTY	✓	✓	✓
FOREST, PARK, AND RECREATIONAL AREAS	CITY OF DADE CITY			✓
FOREST, PARK, AND RECREATIONAL AREAS	CITY OF DADE CITY		✓	✓
FOREST, PARK, AND RECREATIONAL AREAS	CITY OF DADE CITY	✓	✓	✓
FOREST, PARK, AND RECREATIONAL AREAS	CITY OF ZEPHYRHILLS			✓
FOREST, PARK, AND RECREATIONAL AREAS	CITY OF ZEPHYRHILLS		✓	✓
FOREST, PARK, AND RECREATIONAL AREAS	CITY OF ZEPHYRHILLS		✓	✓
FOREST, PARK, AND RECREATIONAL AREAS	CITY OF ZEPHYRHILLS	✓	✓	✓
FOREST, PARK, AND RECREATIONAL AREAS	CITY OF ZEPHYRHILLS	✓	✓	✓
FOREST, PARK, AND	PASCO COUNTY			✓

Description	Owner Name	100 Ft.	200 Ft.	500 Ft.
RECREATIONAL AREAS				
FOREST, PARK, AND RECREATIONAL AREAS	PASCO COUNTY	✓	✓	✓
FOREST, PARK, AND RECREATIONAL AREAS	CITY OF ZEPHYRHILLS			✓
FOREST, PARK, AND RECREATIONAL AREAS	CITY OF ZEPHYRHILLS			✓
FOREST, PARK, AND RECREATIONAL AREAS	CITY OF ZEPHYRHILLS		✓	✓
FOREST, PARK, AND RECREATIONAL AREAS	CITY OF ZEPHYRHILLS	✓	✓	✓
FOREST, PARK, AND RECREATIONAL AREAS	CITY OF ZEPHYRHILLS	✓	✓	✓
FOREST, PARK, AND RECREATIONAL AREAS	CITY OF ZEPHYRHILLS		✓	✓
FOREST, PARK, AND RECREATIONAL AREAS	CITY OF ZEPHYRHILLS	✓	✓	✓
FOREST, PARK, AND RECREATIONAL AREAS	CITY OF ZEPHYRHILLS	✓	✓	✓
FOREST, PARK, AND RECREATIONAL AREAS	PASCO COUNTY		✓	✓
FOREST, PARK, AND RECREATIONAL AREAS	PASCO COUNTY		✓	✓
FOREST, PARK, AND RECREATIONAL AREAS	PASCO COUNTY	✓	✓	✓
FOREST, PARK, AND RECREATIONAL AREAS	PASCO COUNTY		✓	✓
FOREST, PARK, AND RECREATIONAL AREAS	PASCO COUNTY	✓	✓	✓
FOREST, PARK, AND RECREATIONAL AREAS	FL DEPT OF TRANSPORTATION	✓	✓	✓
FOREST, PARK, AND RECREATIONAL AREAS	PASCO COUNTY	✓	✓	✓
FOREST, PARK, AND RECREATIONAL AREAS	PASCO COUNTY		✓	✓
FOREST, PARK, AND RECREATIONAL AREAS	PASCO COUNTY		✓	✓
FOREST, PARK, AND RECREATIONAL AREAS	CITY OF DADE CITY		✓	✓
FOREST, PARK, AND RECREATIONAL AREAS	PASCO COUNTY		✓	✓
FOREST, PARK, AND RECREATIONAL AREAS	PASCO COUNTY		✓	✓

Additional Information

More information about this project can be found on the Public ETDM website at <http://etdmpub.fl-a-etat.org>

A hardcopy map series for this project is available on the Public ETDM Website. Please click on the link below (or copy this link into your Web Browser) in order to view a listing of the hardcopy maps available for this project:

<http://etdmpub.fl-a-etat.org/est/index.jsp?tpID=6011&startPageName=Hardcopy%20Maps>

Special Note: Please be sure that when the Hardcopy Maps page loads, the **Project Milestone Date** corresponding to this Advance Notification is selected. Hardcopy map snapshots have been taken for Project #6011 at various points throughout the project's life-cycle, so it is important that you view the correct snapshot.

APPENDIX B
Official Comments

US 301 PD&E Study
WPI No.: 408075 1
FAP No.: 3112 020 P



US 301 (SR 39/Gall Boulevard)
Project Development & Environment (PD&E) Study
from South of CR 54 (Eiland Boulevard) to
US 98 Bypass (SR 533)



Public Hearing – Comment Form

November 4, 2009

NAME: Todd Vande Berg, Director of Development
ADDRESS: 5335 8th St.
City of Zephyrhills, FL 33542

COMMENTS:

1.) The City of Zephyrhills has an approved Multi-Purpose Trail Plan that shows a multi-purpose trail planned for the west side of U.S. 301 along the entire PD&E area.

② - Staff recommends the 5' sidewalk presently shown be increased to accommodate the trail.

Spoke to Steve Cordillo & Matt @ public hearing. The City will submit trail plan to Steve. Also Pasco County's Trail should be considered for segment B+C.
R.J. Ketch - Assistant City Planner

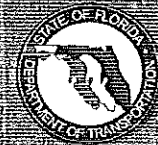
- ☐ If you did not receive notice of the workshop, but would like to be included on the mailing list for this project, please check.

NOTE: Please complete and place in the "Comments" box or mail to Ming Gao, P.E. at the address on the back of this Comment Form. We request that comments be postmarked by November 16, 2009 so project development can proceed.

Public participation is solicited without regard to race, color, national origin, age, sex, religion, disability or family status.



US 301 (SR 39/Gall Boulevard)
Project Development & Environment (PD&E) Study
from South of CR 54 (Eiland Boulevard) to
US 98 Bypass (SR 533)



Public Hearing – Comment Form

November 4, 2009

NAME:

ADDRESS:

RANDY MASSANO SONNY'S DISCOUNT APPLIANCE
10651 Hwy 301
Dade City FL 33525

COMMENTS:

I'm VERY CONCERNED
ABOUT ~~CHANGING~~ ELIMINATING THE TURN LANE
IN FRONT OF STORE. IT NEEDS TO
BE RECONSTRUCTED TO 5-10'
SONNY'S DISCOUNT APPLIANCE.
10651 Hwy 301
Dade City FL 33525
352-567-6224
RMASANO@Tampabay.Mt.com

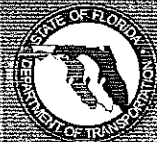
- ☐ If you did not receive notice of the workshop, but would like to be included on the mailing list for this project, please check.

NOTE: Please complete and place in the "Comments" box or mail to Ming Gao, P.E. at the address on the back of this Comment Form. We request that comments be postmarked by November 16, 2009 so project development can proceed.

Public participation is solicited without regard to race, color, national origin, age, sex, religion, disability or family status.



US 301 (SR 39/Gall Boulevard)
Project Development & Environment (PD&E) Study
from South of CR 54 (Eiland Boulevard) to
US 98 Bypass (SR 533)



Public Hearing – Comment Form

November 4, 2009

NAME:

PETE ODOM

ADDRESS:

37707 MARC H CN
ZENYRHILLS, FL 33541

COMMENTS:

REQUEST MAPS OF THE 301 PROJECT
RT 54 TO



If you did not receive notice of the workshop, but would like to be included on the mailing list for this project, please check.

NOTE: Please complete and place in the "Comments" box or mail to Ming Gao, P.E. at the address on the back of this Comment Form. We request that comments be postmarked by November 16, 2009 so project development can proceed.

Public participation is solicited without regard to race, color, national origin, age, sex, religion, disability or family status.



US 301 (SR 39/Gall Boulevard)
Project Development & Environment (PD&E) Study
from South of CR 54 (Eiland Boulevard) to
US 98 Bypass (SR 533)



Public Hearing – Comment Form

November 4, 2009

NAME:

ADDRESS:

LEOW S. WILSON III
P.O. Box 1719
2 Ephraim Hills Fl. 33539
8810 Sparkle Berry Lane

COMMENTS:

Please - ADDRESS (TARKHELLA)
Entrance to 301 - AND (BAILEY HILL RD)
which is a mess with all the
dirt-lime rock etc washing to 301-ROAD -
way & Ditch -

Thank You -
L. Wilson

RECEIVED
PLANNING UNIT
2009 NOV 20 PM 3:28

- ☐ If you did not receive notice of the workshop, but would like to be included on the mailing list for this project, please check.

NOTE: Please complete and place in the "Comments" box or mail to Ming Gao, P.E. at the address on the back of this Comment Form. We request that comments be postmarked by November 16, 2009 so project development can proceed.

Public participation is solicited without regard to race, color, national origin, age, sex, religion, disability or family status.

APPENDIX C
Public Hearing Transcript

US 301 PD&E Study

WPI No.: 408075 1

FAP No.: 3112 020 P

PASCO COUNTY/FLORIDA DEPARTMENT OF TRANSPORTATION
U.S.301 PROJECT DEVELOPMENT & ENVIRONMENT STUDY

CERTIFIED COPY

Proposed Improvements On:

U.S. 301 (SR39/Gall Blvd)
from South of CR 54 (Eiland Blvd)
to the U.S. 98 Bypass (SR 533).

_____ /

PROCEEDINGS:

PUBLIC HEARING

DATE:

November 4, 2009

TIME:

Commenced at 6:00 p.m.
Concluded at 6:08 p.m.

PLACE:

Zephyr Palms Event Center
4645 Airport Road
Zephyrhills, Florida 33542

BEFORE:

NOELE J. RILEY
Stenographic Court Reporter
and Notary Public State of
Florida at Large

1

2

3

APPEARANCES

4

Ming Gao, Intermodal Systems Development Manager,
District Seven, Florida Department of Transportation,
11201 North McKinley Drive, Tampa, Florida, 33612

6

7

8

9

10

INDEX

11

Page

12

OPENING COMMENT BY MR. GAO

3

13

STATEMENT BY MR. ODOM

6

14

STATEMENT BY MR. FREY

6

15

STATEMENT BY MR. POTTER

9

16

STATEMENT BY MS. HO

10

17

STATEMENT BY MR. HO

10

18

CERTIFICATE OF REPORTER

11

19

20

21

22

23

24

25

P R O C E E D I N G S

MR. GAO: Good evening. Welcome. My name is Ming Gao. I am the Intermodal Systems Development Manager for District Seven of the Florida Department of Transportation. Welcome to the Public Hearing for US 301 Project Development and Environment Study, also known as PD&E Study. This Public Hearing concerns the proposed improvements on US 301, also known as State Road 39/Gall Boulevard, from south of County Road 54 (Eiland Boulevard) to the US 98 Bypass (State Road 533).

Today is Wednesday, November 4, 2009. It is approximately 6:00 p.m. We are assembled at Zephyr Palms Event Center in Zephyrhills, Florida. This is your opportunity to receive information on the project and officially comment on the recommended "Build" Alternative and other documents available here tonight. The recommended "Build" Alternative is based on comprehensive environmental and engineering analyses completed to date, as well as public comments that have been received.

The PD&E study and Public Hearing are being conducted under applicable Federal and State laws. Those citations are listed on the board next to the sign-in table.

1 When you arrived this evening you should have
2 received an information packet containing an
3 informational newsletter and a comment form. If
4 you were not able to sign in or did not receive an
5 information packet please stop by our sign-in table
6 before leaving this evening. You should have also
7 had the opportunity to view the audio-visual
8 presentation that is continuously running through
9 this public hearing.

10 Those who wish to provide comments during this
11 portion of the Public Hearing should complete a
12 speaker's card and submit it to a department
13 representative. If you did not receive a card,
14 please raise your hand and a department
15 representative will be happy to provide you with
16 one.

17 In addition to making oral statements, you may
18 also submit your comments to the District in
19 writing. Comment forms may be placed in one of the
20 comment boxes this evening or you may complete the
21 form at a later date and mail it to us at the
22 preprinted address located on the back of the
23 sheet. Please keep in mind that written comments
24 must be postmarked by Monday, November 16, 2009 to
25 be included in the official public hearing record.

1 Before I continue, I would like to recognize
2 any elected officials or their representatives who
3 are here tonight. Any elected official?

4 MR. FUNES: My name is Manny. I am city
5 councilman for Zephyrhills.

6 MR. GAO: Thank you. welcome. Thank you for
7 coming.

8 Okay. At this time we will begin taking
9 public comments. I will call each speaker in order
10 in which their request is received. So far I have
11 not received any requests from speakers. So my
12 next comment will be good point, because I am going
13 to say: In an effort to accommodate all requests
14 to speak, we ask that each speaker keep their
15 comments to 3 minutes. We don't have one.

16 Anyone wish to speak? wow. That makes it
17 very easy.

18 well, I just want to let you know the Public
19 Hearing transcript, written statements, exhibits
20 and reference materials will be available for
21 public inspection at the District Seven Office,
22 11201 North McKinley Drive, Tampa, Florida within
23 three weeks.

24 I would like to ask again: Anyone that would
25 like to make a statement?

1 MR. ODOM: I have a question. When are you
2 going to start digging dirt?

3 MR. GAO: The project currently is not funded
4 for design construction. Right now we are only
5 looking at a concept, a PD&E study. So we don't
6 really have a schedule in turning dirt or
7 construction. We do have a design for the first
8 segment of the project but no construction.

9 All right.

10 MR. FREY: Do you have to turn the study in
11 and then they go from there? Who do you turn that
12 in to now after you are done with the study?

13 MR. GAO: Well, since it is a state road we
14 are keeping the study. We are keeping the
15 document. We are asking federal highway to approve
16 our study, but at this time we are not handing the
17 study to anyone. We are keeping it at the
18 Department. If anyone would like to see those
19 documents, we would have it.

20 MR. FREY: But, I mean, where does the funding
21 come from? Don't you have to tell somebody you
22 have this part done; they need to take over?

23 MR. GAO: The Metropolitan Planning
24 Organization of Pasco County will have to
25 prioritize the project and allocate funding for the

1 project.

2 MR. FREY: Who allocates it, though, the
3 State?

4 MR. GAO: There are federal funds and state
5 funds. We have to go through the prioritizing
6 process with the Metropolitan Planning
7 Organization.

8 MR. FREY: Does that start next?

9 MR. GAO: Every year we go through the same
10 cycle.

11 MR. FREY: Okay. That is what I was
12 wondering.

13 MR. GAO: Yes. Well, at this point it is
14 6:05.

15 MR. ODOM: May I ask another question?

16 MR. GAO: Okay.

17 MR. ODOM: I have some concerns with the
18 eliminations of the crossovers, particularly in the
19 first segment of the road north of Island
20 Boulevard. When you come out of I believe it is
21 the Florida Medical Center right next to Sonny's
22 Barbeque, I think I am calling that correct, if you
23 want to go back toward Zephyrhills you have to turn
24 right and go up quite a ways to make a U-turn to
25 come back south.

1 If you are southbound on 301 and you want to
2 go to the movie theater you have to go even further
3 south to make a U-turn to come back to get into the
4 movie theater or either turn off on one of the side
5 streets and wind around through an area --
6 residential area there. I have experienced some of
7 the traffic quieting, I think is what you guys used
8 to call it, there at the Wal-Mart with the two
9 shopping centers that we have there.

10 You know, you are sending people a long way
11 out of the way. Particularly, you know, we have an
12 elderly population in Zephyrhills of which I am one
13 of now that sometimes get confused with these
14 turns. From a safety standpoint, I don't know what
15 the answer is, but I think it needs more study.

16 MR. GAO: Okay. Well, thank you for your
17 comment. Just for the record, can you state your
18 name so our court reporter can record it as an
19 official comment?

20 MR. ODOM: Pete Odom, O-D-O-M.

21 MR. GAO: One of our engineers can certainly
22 answer your question. You know, listening to you
23 describing the issue, it is very hard for me to
24 point out, but one of our engineers can help you,
25 perhaps explain a little further.

1 Anyone else who would like to make a comment?

2 MR. POTTER: I have a question.

3 MR. GAO: Would you like to come up to the
4 podium?

5 MR. POTTER: I'm okay.

6 MR. GAO: Please state your name.

7 MR. POTTER: Joseph Potter, Zephyrhills. Is
8 this project currently on the MPO list, or, if not,
9 how much time are we talking about before it would
10 go forward?

11 MR. GAO: It is on the MPO list but it is not
12 on the top of their priorities. The reason we are
13 conducting this study is because MPO asked us to do
14 the study and to look at the feasibility of the
15 improvement. That's why we are doing it.

16 MR. POTTER: So we are really at Square One or
17 Two, or where are we at?

18 MR. GAO: It is not quite Square One. It is
19 on the list but not their top priority. I think if
20 anyone is here from MPO they can probably answer
21 your question, but at this point it is not their
22 top priority.

23 MR. POTTER: Thank you.

24 MR. GAO: Anyone else?

25 okay. I will try this again. It is 6:08

1 right now and I officially conclude this formal
2 portion of the public hearing for the US 301 PD&E
3 study. Thank you for coming.

4 (Thereupon, the proceedings were concluded at
5 6:08 p.m.)

6 COMMENTS MADE PRIOR TO HEARING:

7 MS. HO: Anna Ho, A-N-N-A, H-O. My business
8 address is 12830 US Highway 301, Dade City,
9 Florida, 33525; home address, 11617 B-U-R-M-A-C
10 Road, Dade City, Florida, 33525. My comment is the
11 southbound lane on US 301 by Segment D Southbound,
12 we need the access to go in the Dade City Village
13 Shopping Center.

14 MR. HO: Terry Ho, T-E-R-R-Y, H-O. Business
15 address, 12830 US 301, Dade City, Florida, 33525.
16 Same comment with her.

17
18
19
20
21
22
23
24
25

1 CERTIFICATE OF REPORTER


2 STATE OF FLORIDA

3 COUNTY OF HILLSBOROUGH

4 I, NOELE J. RILEY, Court Reporter and Notary Public
5 in and for the State of Florida at Large, CERTIFY that I
6 was authorized to and did stenographically report the
7 above proceedings, and that this transcript of
8 proceedings, pages 1 through 11 inclusive, constitutes a
9 true and correct record of my stenographic notes.

10 I FURTHER CERTIFY that I am not a relative,
11 employee, attorney or counsel of the parties, nor am I a
12 relative or employee of any of the parties' attorneys or
13 counsel connected with the action, nor am I financially
14 interested in the action.

15 Dated this 15th day of November, 2009.

16
17 
18 NOELE J. RILEY

