

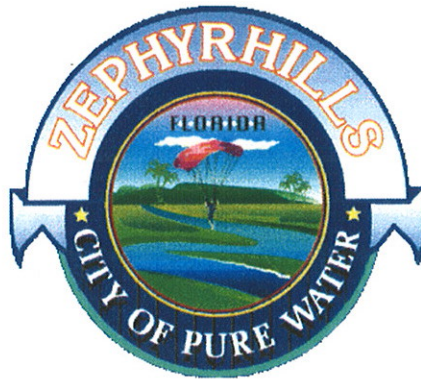


Utility Assessment Package

Work Program Item Number: 256422 1
Federal Aid Project Number: 1455-001-U

U.S. 301 (S.R. 41)
From S.R. 39 to C.R. 54
Pasco County, Florida

This project evaluates adding through lanes on U.S. 301 from S.R. 39 to C.R. 54 through Zephyrhills. A one-way pair system using 6th Street and U. S. 301 is recommended. The approximate length of the project is 2.6 miles.



Prepared by
William D. Summers
FDOT District Seven Utility Office

June 2001

TABLE OF CONTENTS

Title
Page

TABLE OF CONTENTS	i
LIST OF FIGURES	ii
1.0 INTRODUCTION.....	1
1.1 Purpose	1
1.2 Project Description.....	1
1.2.1 Existing Roadway Facility	2
1.2.2 Proposed Improvements	2
2.0 EXISTING UTILITIES.....	3
2.1 Utility Owners	3
2.2 Description of Utilities	5
3.0 UTILITY RELOCATION COST ESTIMATE.....	7
4.0 MITIGATIVE RECOMMENDATIONS.....	9
APPENDIX - Plans Showing Location of Existing Utilities	

LIST OF FIGURES

Figure Number	Title	Follows Page
1-1	Project Location Map	1
1-2	Existing Roadway Typical Section	2
1-3	Proposed Roadway Typical Section	2

1.0 INTRODUCTION

The Florida Department of Transportation (FDOT) is conducting a Project Development and Environment (PD&E) Study for the improvement of U.S. 301 (S.R. 41) between S.R. 39 and C.R. 54, in Pasco County, Florida a distance of approximately 2.6 miles. Figure 1-1 illustrates the location and limits of the project and its relationship to the regional highway system.

1.1 Purpose

The objective of the PD&E Study is to provide documented environmental and engineering analyses that will help the FDOT and the Federal Highway Administration (FHWA) reach a decision on the type, conceptual design, and location of the necessary improvement along the U.S. 301 corridor to accommodate future transportation needs in a safe and efficient manner. The PD&E Study also satisfies the requirements of the National Environmental Policy Act (NEPA) in order to qualify for federal aid funding.

This Utility Assessment Package is part of the documentation needed to complete the PD&E Study. The purpose of this package is to evaluate and consider potential surface and subsurface utility conflicts associated with the proposed project.

1.2 Project Description

The U.S. 301 (S.R. 41) corridor is a north/south principal arterial facility that traverses through Tampa, Zephyrhills, Dade City, and continues north. The location and limits of the project are shown in Figure 2-1. Appendix A of this report includes copies of roadway maps and the Department's straight line diagrams illustrating all intersecting streets and roadways. The project is located partly in unincorporated Pasco County, from S.R. 39 to C Avenue. The section from C Avenue north to C.R. 54 is in the City of Zephyrhills.

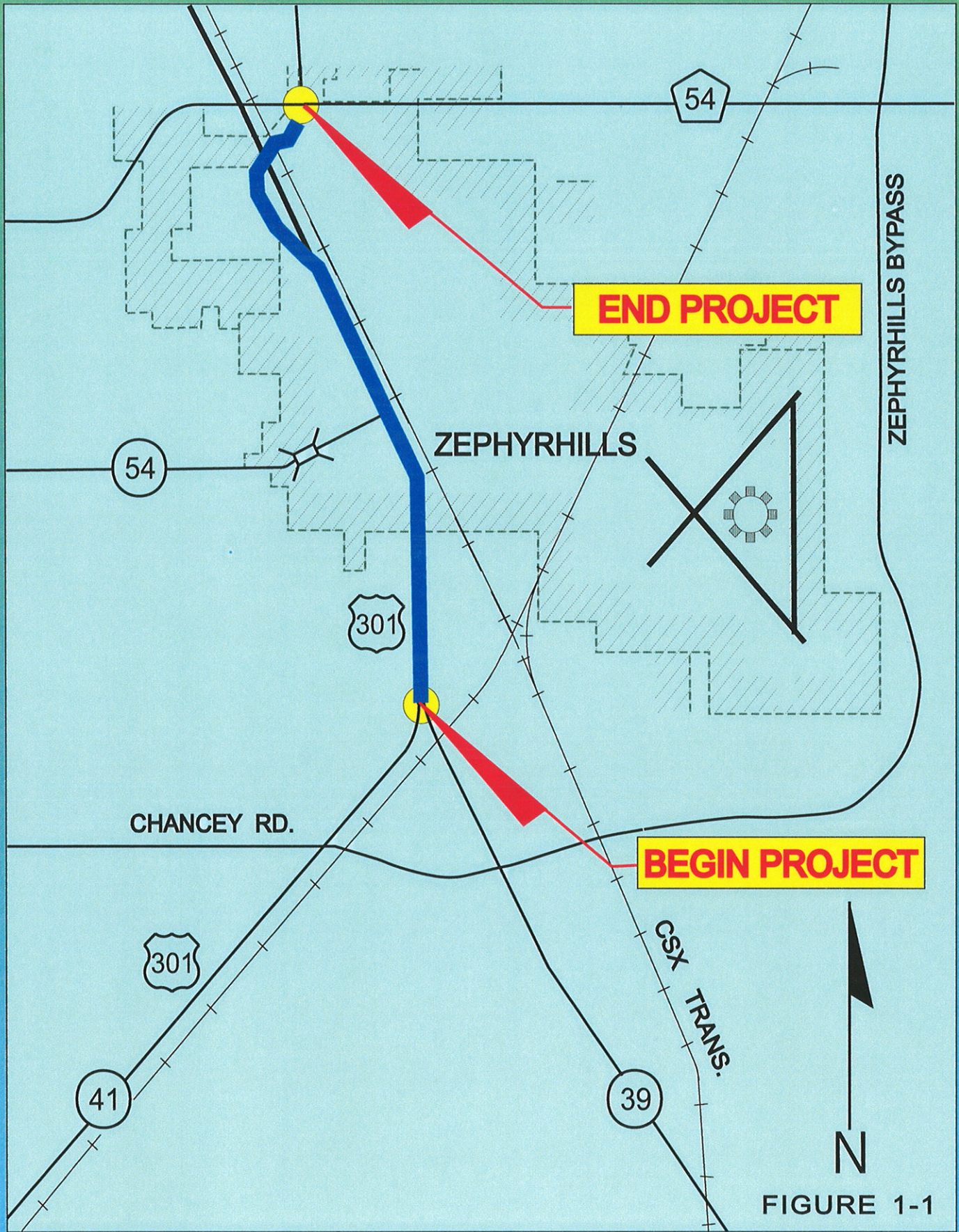


FIGURE 1-1



U.S. 301 PD&E STUDY
 (S.R.39 TO C.R.54)
 PASCO COUNTY

PROJECT LOCATION MAP
 W.P.I. SEG. No. 256422 1
 F.A.P. No. 1455-001-U



1.2.1 Existing Roadway Facility

The existing roadway is a two lane rural road with four foot paved shoulders. A one-way pair was created in 1996 by the City of Zephyrhills using 6th and 7th Streets as an alternate route to U.S. 301. The City's one-way pair system begins at A Avenue for northbound traffic on 7th Street and ends at C Avenue for southbound traffic on 6th Street. This Study considered the extension of the one-way streets, continuing 6th and/or 7th Street one-way to S.R. 39. See Figure 1-2.

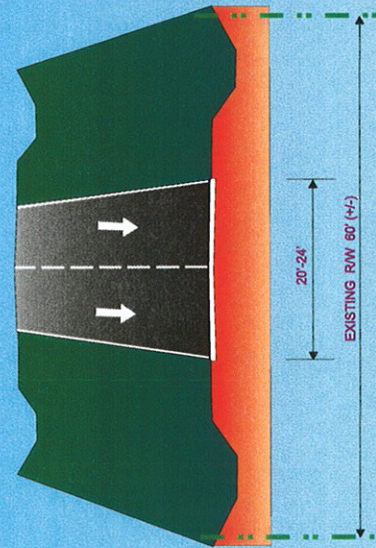
1.2.2 Proposed Improvements

The Recommended Alternative is a one-way pair system using 6th Street southbound and U.S. 301 northbound. The proposed urban typical section for both of these streets consists of three 11-foot travel lanes, a four-foot bicycle lane and five-foot sidewalks on each side. An underground pipe system is proposed to convey storm water to retention ponds. See Figure 1-3.

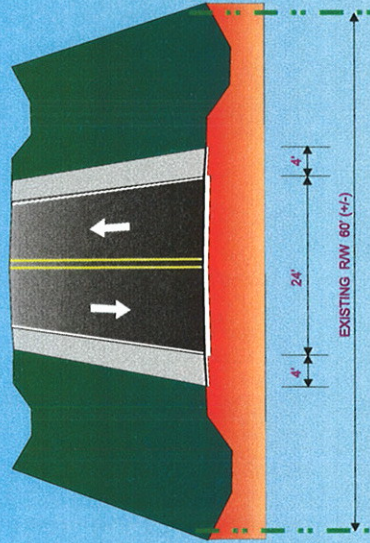
**U.S. 301
IN ZEPHYRHILLS
FROM S.R. 39 TO C.R. 54**

FEDERAL AID NO. 1455-001-U

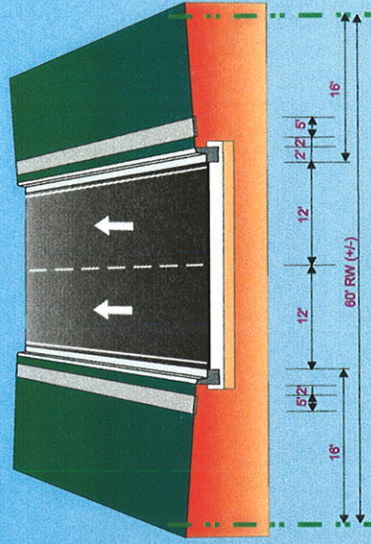
W.P.I. SEG. 256422 1



6TH STREET



U.S. 301



7TH STREET

**EXISTING
TYPICAL SECTIONS**

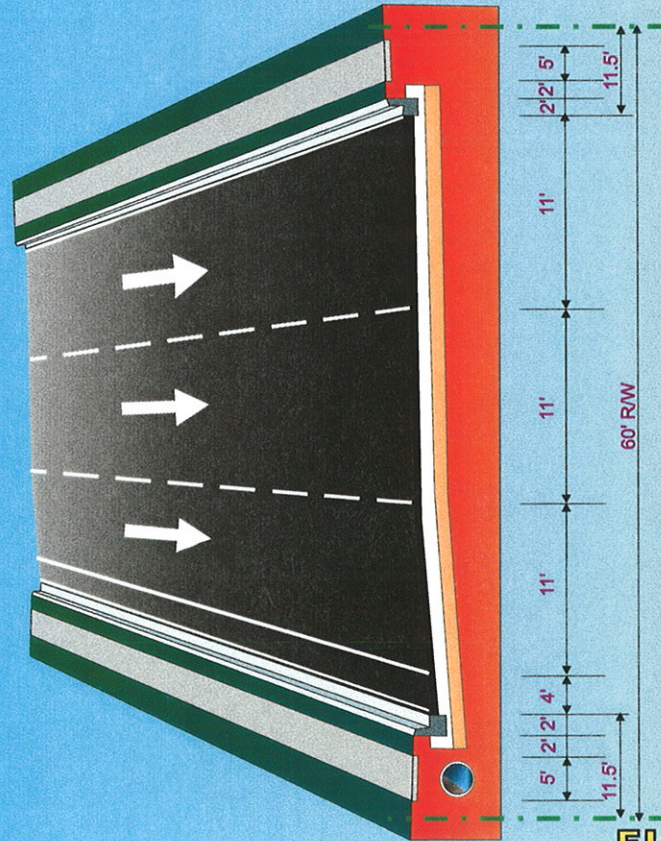


FIGURE 1-2

U.S. 301 ZEPHYRHILLS PD&E STUDY FROM S.R. 39 TO C.R. 54

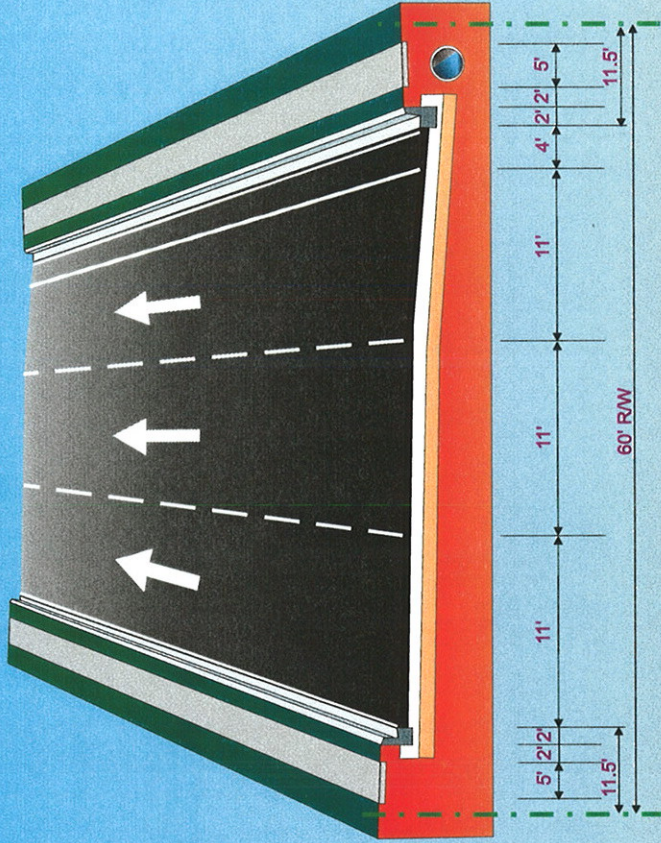
W.P.I. SEG. 256422 1
FEDERAL AID NO. 1455-001-U

PROPOSED THREE LANE ONE WAY
TYPICAL SECTION



6TH STREET

PROPOSED THREE LANE ONE WAY
TYPICAL SECTION



U.S. 301

**RECOMMENDED
ALTERNATIVE**



FIGURE 1-3

2.0 EXISTING UTILITIES

In order to ultimately evaluate potential utility conflicts associated with the most feasible improvement alternative, all available information must be obtained concerning the location and characteristics of major existing or proposed utilities with the U.S. 301 corridor. As the first step in the process, a preliminary list of utility owners to contact was developed. Candidate owners for this "contact" list were those owners known to operate or have plans to operate facilities within the Pasco County area.

Each utility owner on the above list was then contacted by telephone and asked to verify ownership or operation of any utility facilities, existing or proposed (regardless of the proposed project), within the U.S. 301 corridor from S.R. 39 to C.R. 54.

2.1 Utility Owners

The remaining companies on the "contact" list confirmed ownership of utility facilities within the project corridor. These owners (see list on next page) were then provided with two sets of aerial-photography-based plans depicting existing drainage structures, right of way (ROW) lines, highway stationing numbers, and the conceptual layout of the most feasible roadway improvement alternative. The owners were asked to mark and return one set with an indication of existing facilities and proposed adjustments.

Utility Companies in Project Limits

Florida Power Corporation
Ms. Rosemary Gruenbaum
2600 Lake Lucian Dr., Suite 400
Maitland, Fl. 32751-7234
Phone: 407-475-2471

City of Zephyrhills
Mr. Louie Sellers
5335 8th Street
Zephyrhills, Fl. 33540
Phone: 813-782-1191

Verizon Florida, Inc.
Mrs. Kimberly S. Wiley
120 East Lime Street
Lakeland, Fl. 33801
Phone: 863-284-2693

TECO Peoples Gas
Ms. Barbara Bowen
1400 Channelside Drive
Tampa, Fl. 33605
Phone: 813-275-3731

Moffat Communications (Cable TV)
Mr. Jack Cooper
30432 Highway 54 West
Wesley Chapel, Fl. 33599
Phone: 813-862-0500, Ext. 1055

Zephyrhills Bottled Water
Ms. Meg Andronaco
4330 20th Street
Zephyrhills, Fl. 33540
Phone: 813-789-1959, Ext. 243

2.2 Description of Utilities

For plans showing the location of existing utilities, see Appendix.

A description of the existing facilities indicated by the utility owners are summarized below:

Florida Power Corporation: Distribution

There are distribution lines through out the project on US 301 and 6th Street with numerous lines connecting side streets and service drops to businesses and residences.

Zephyrhills Bottled Water:

While not a utility Zephyrhills Bottled Water has a 10" stainless steel water line that comes from Crystal Springs to their water plant on 20th Street. The line is buried along the old US 301 in front of Zephyr Senior Mobile Home Park, it crosses US 301 and SR 39 at Tucker Road and proceeds East down Tucker to 20th Street.

Moffat Communications: Cable TV

There is aerial and buried cable throughout the project on US 301 and 6th Street. The buried lines typically run parallel to the roads the aerals are typically crossings.

Verizon Florida: Telephone

There are multiple buried cables, fiber optic lines and conduit/manhole systems throughout the project, there is a 16-way conduit system feeding into the Verizon building at A Ave. and US 301. There is one run of aerial cables on the right side of US 301 from the junction with SR 39 to just north of the Firestone Tire store.

TECO Peoples Gas:

TECO Peoples Gas has a 6" PE line on the right side of SR 39 placed 24' off the C/L roadway, between Tucker Road and the junction with US 301 a 4" PE line crosses over to US 301 and runs South on the right side of the road. The 6" PE line continues North maintaining 24' off C/L roadway to 7th Street were it turns and follows 7th Street north.

There is a 2" PE line crossing at 6th Ave. The 6" line reenters the DOT right-of-way at the NE corner of North Ave. and US 301.

City of Zephyrhills: Water Mains

US 301: The city has short runs of 2" WM parallel with the road at United 500/Plymale to Fir Ave., Stebbins Ave. to Justin Ave., Big A Auto Parts to B Ave., 3rd Ave. to Moody's Hardware, Town Centre to 6th Ave. and 10th Ave. to 11th Ave. There is a 2" WM crossing at Vinson Ave., a 4" WM at South Ave., 6" WM crossings at Fir Ave., Alston Ave., B Ave., 7th Ave. and 16th Ave. There are 8" WM crossings at 5th Ave. and 12th Ave.

6th Street: The bulk of the city utilities affected by the project area on this street. On the right side there is a 2" WM from Vinson Ave. to a tee at B Ave., from the tee a 6" WM goes to 3rd Ave. where it crosses 6th Street and turns West on 3rd Street. A 2" Wm continues from 3rd Ave. to a connection at 5th Ave., from this connection a 6" WM goes to a tee at 7th Ave. where it turns and goes E/W on 7th. Beginning at a tee at 11th Ave. a 2" WM to a connection at 16th Ave. Beginning at 5th Ave. there is an 8" WM on the left side of the road to 15th Ave. where it turns West on 15th.

City of Zephyrhills: Sewer Mains

There is one 8" FM crossing US 301 and 6th Street on the North side of 5th Ave.

3.0 UTILITY RELOCATION COST ESTIMATE

As previously discussed in Section 2.0 of this report, several utility distribution lines are located within the existing U.S. 301 ROW, including aerial and buried power lines, aerial and buried telephone cables, aerial cable television lines, potable water mains, force mains, and gas mains. Depending on their location and depth, implementation of the recommended improvements for the project may require adjustment of some of these facilities. A set of plans identifying the preferred alternative was sent to the utility companies to provide utility relocation costs.

City of Zephyrhills:

The bulk of the city's system in the project limits is on 6th Street and would be reimbursable. The facilities on US 301 that would carry an impact to the city consists of 2" service lines parallel to the road and 4", 6", and 8" crossings.

Facility	Linear Feet	Costs	Totals
2" Pipe	2230	\$11.17	\$24,909.10
4" Pipe	80	\$12.00	\$ 960.00
6" Pipe	420	\$10.50	\$4,410.00
8" pipe	310	\$62.19	\$19,278.90
Pipe Removal	3,565	\$6.49	\$23,136.85
		Total	\$72,694.85

TECO Peoples Gas:

Costs are taken from State bid.

Facility	Linear Feet	Costs	Totals
4" Pipe	620	\$18.90	\$11,718.00
6" Pipe	4,420	\$25.00	\$110,500.00
Pipe Removal	5,040	\$6.49	\$32,709.60
		Total	\$154,927.60

Moffat Communications: Cable TV

Moffat provided approximate costs for relocation of \$6.50 per foot for buried cable, \$5.00 per foot for aerial cable, this would put total relocation costs of the existing cables in the neighborhood of \$160,000.

Verizon Florida: Telephone:

No response to costs request.

Florida Power Corporation:

No response to costs request.

4.0 MITIGATIVE RECOMMENDATIONS

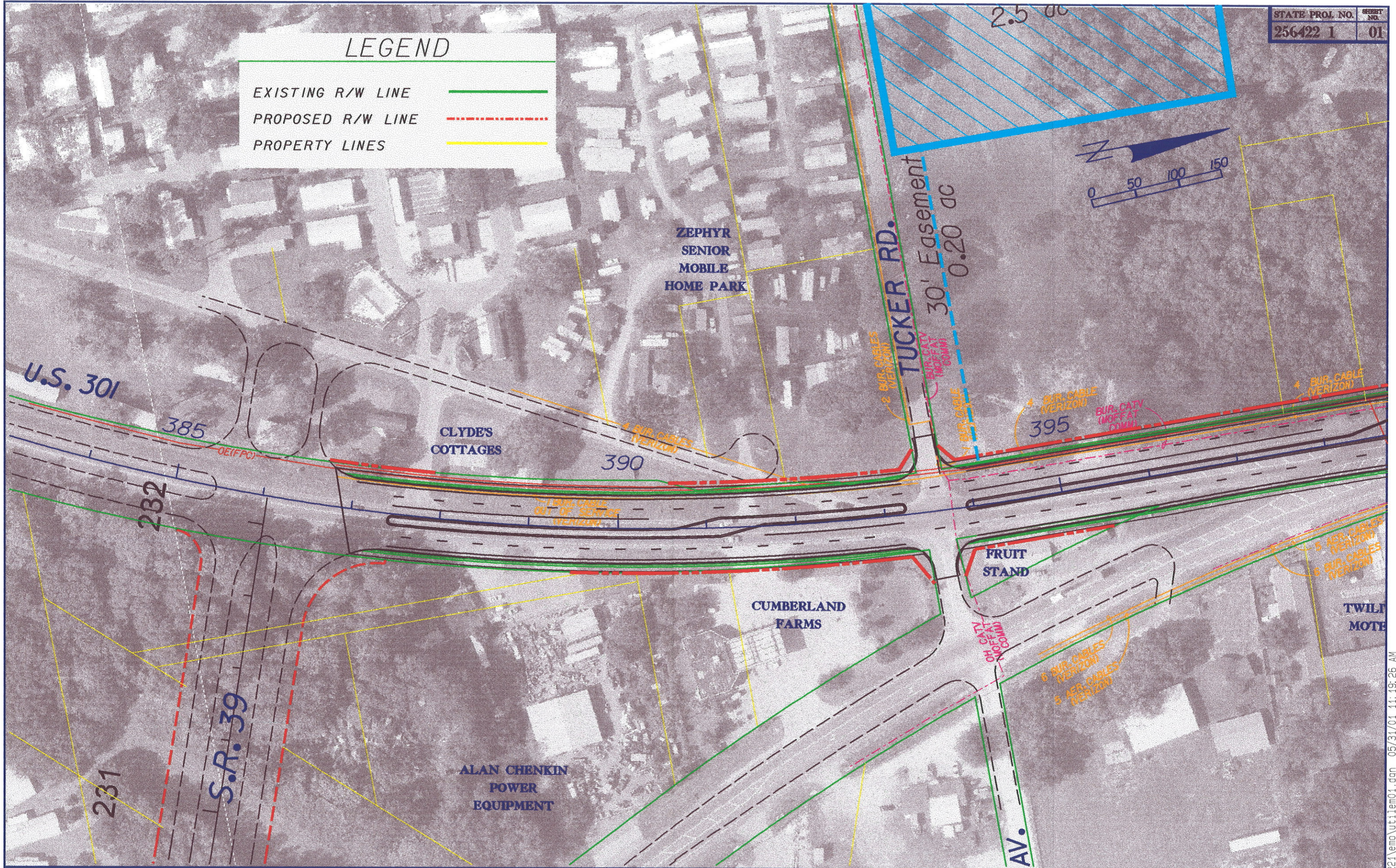
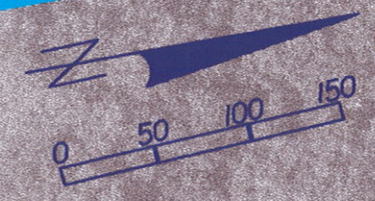
The only utility facility out of the ordinary in the project limits is Verizon's central office building at US 301 and A Avenue. The type and amount of cable and fiber optic lines tied into the Central Office would make relocation efforts extremely expensive, careful coordination with Verizon in the design phase could help alleviate some of these costs.

APPENDIX

Plans Showing Location of Existing Utilities

LEGEND

- EXISTING R/W LINE —
- PROPOSED R/W LINE - - -
- PROPERTY LINES —

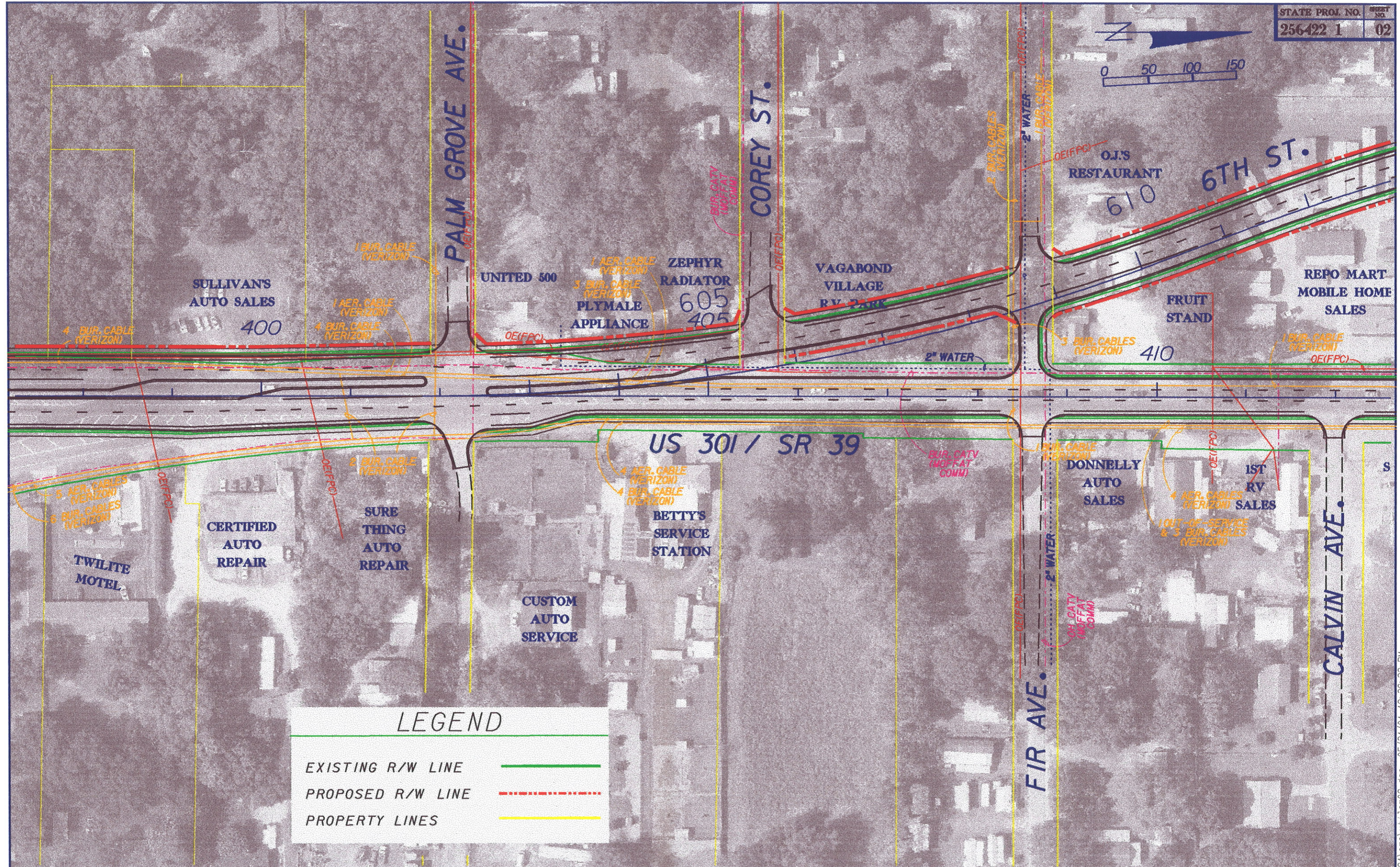


REVISIONS							
DATE	BY	DESCRIPTION	DATE	BY	DESCRIPTION	DATE	BY

EXISTING UTILITIES

FLORIDA DEPARTMENT OF TRANSPORTATION

U.S. 301 PD&E STUDY FROM S.R. 39 TO C.R. 54



LEGEND

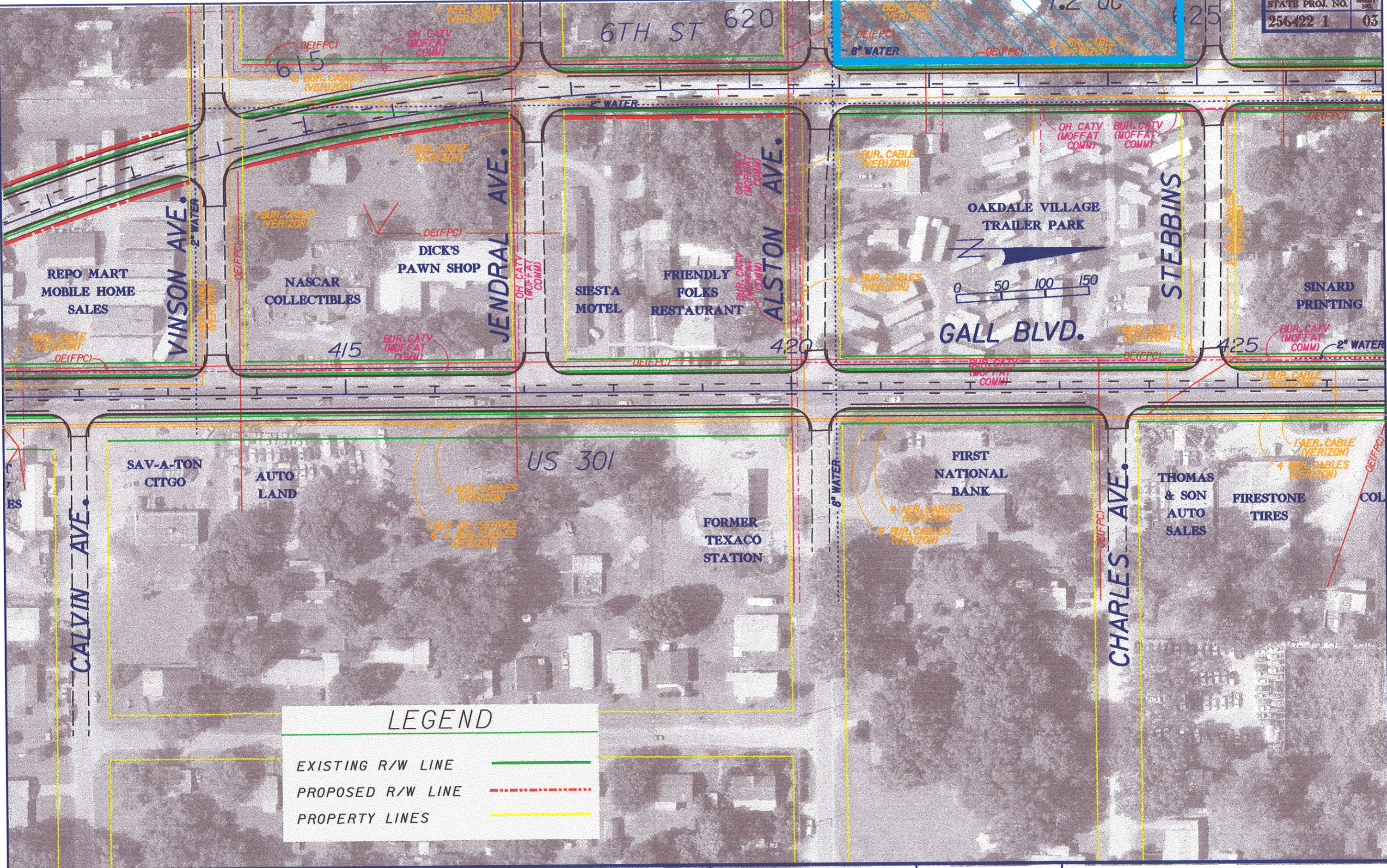
EXISTING R/W LINE	
PROPOSED R/W LINE	
PROPERTY LINES	

REVISIONS							
DATE	BY	DESCRIPTION	DATE	BY	DESCRIPTION	DATE	BY

EXISTING UTILITIES

FLORIDA DEPARTMENT OF TRANSPORTATION

U.S. 301 PD&E STUDY FROM S.R. 39 TO C.R. 54



LEGEND

EXISTING R/W LINE	
PROPOSED R/W LINE	
PROPERTY LINES	

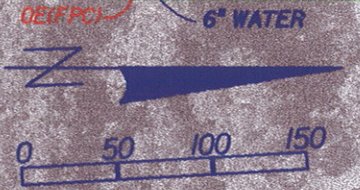
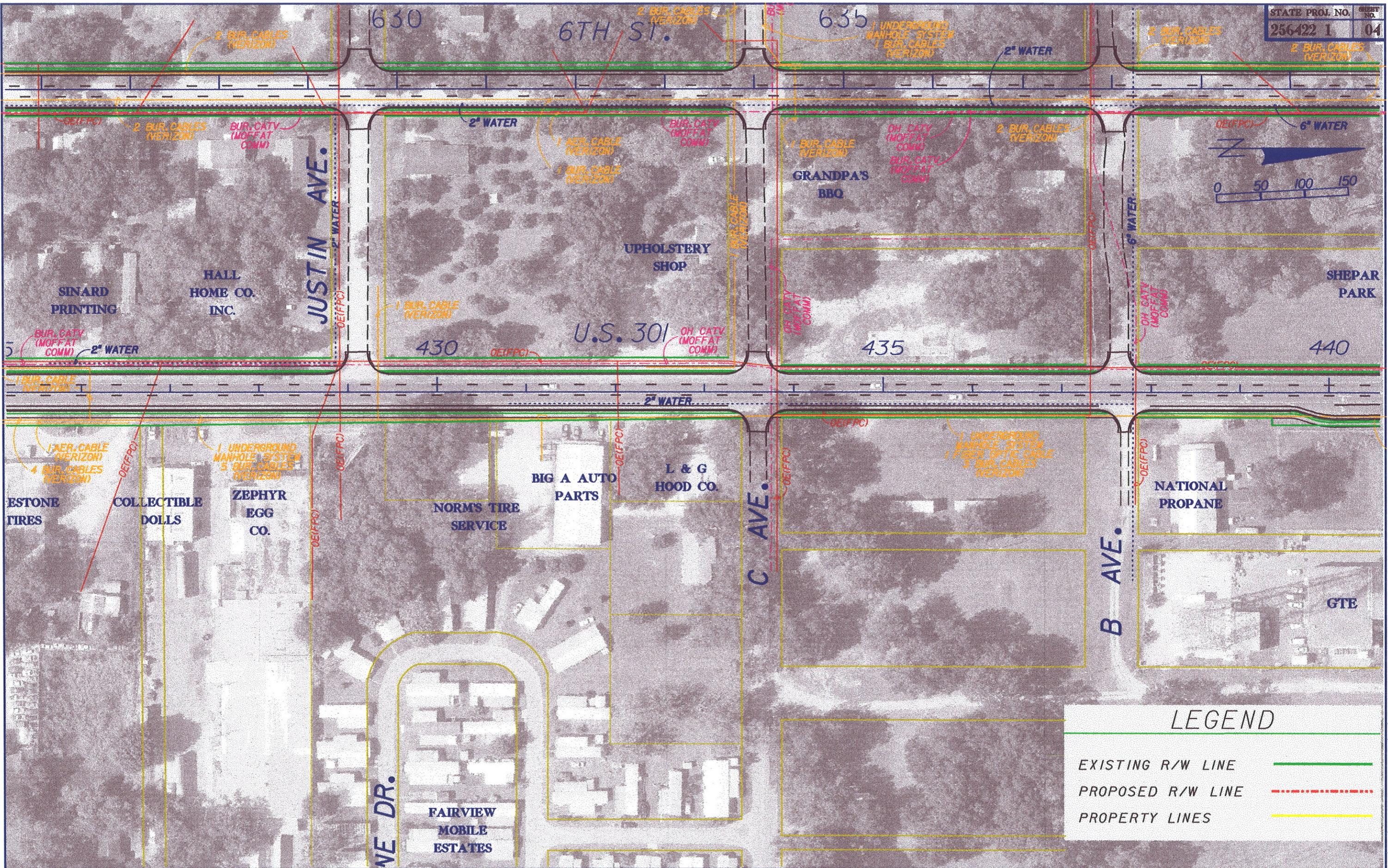
REVISIONS

DATE	BY	DESCRIPTION	DATE	BY	DESCRIPTION

EXISTING UTILITIES

FLORIDA DEPARTMENT OF TRANSPORTATION

U.S. 301 PD&E STUDY FROM S.R. 39 TO C.R. 54



LEGEND

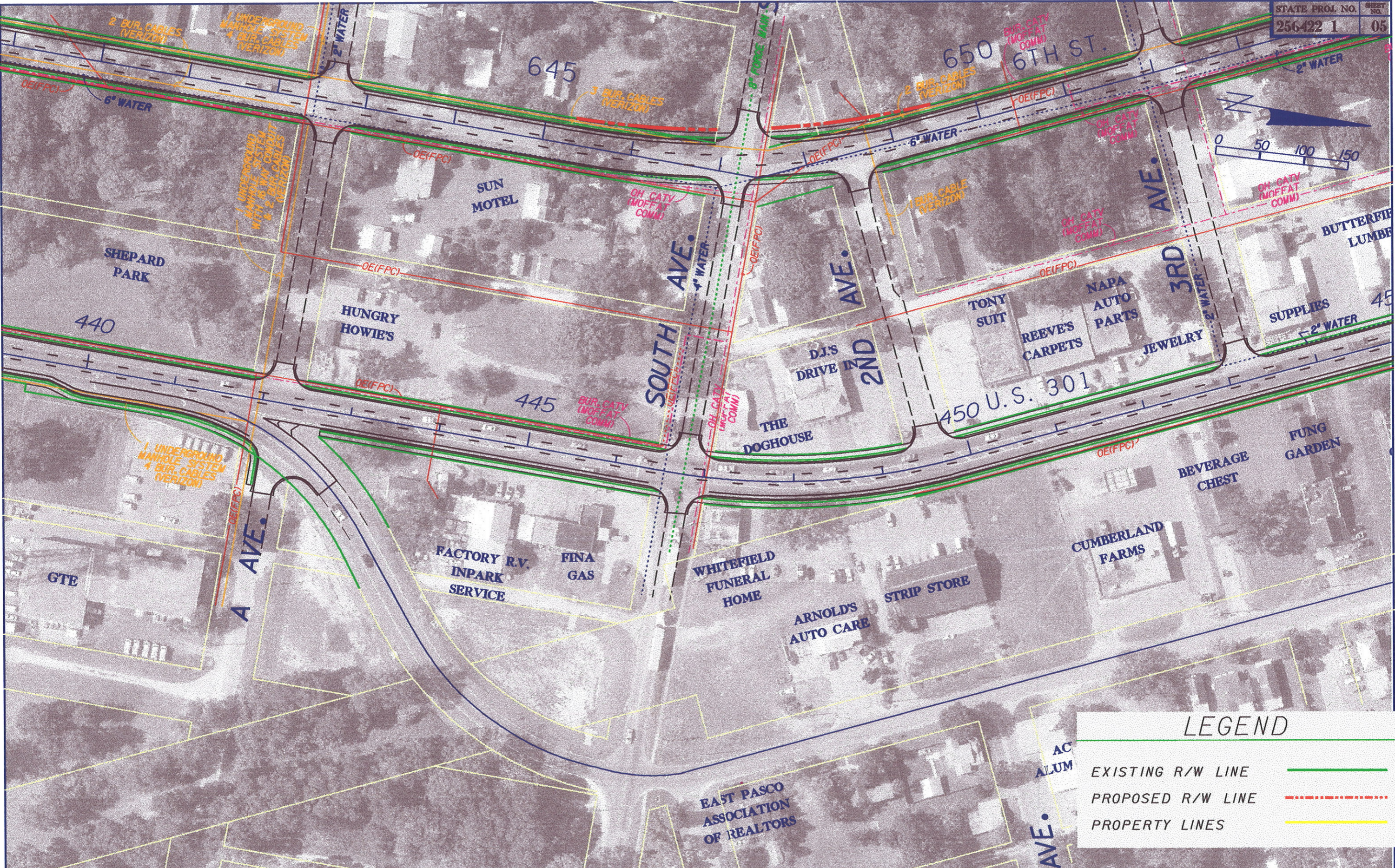
EXISTING R/W LINE	
PROPOSED R/W LINE	
PROPERTY LINES	

REVISIONS			
DATE	BY	DESCRIPTION	

EXISTING UTILITIES

FLORIDA DEPARTMENT OF TRANSPORTATION

U.S. 301 PD&E STUDY FROM S.R. 39 TO C.R. 54



LEGEND

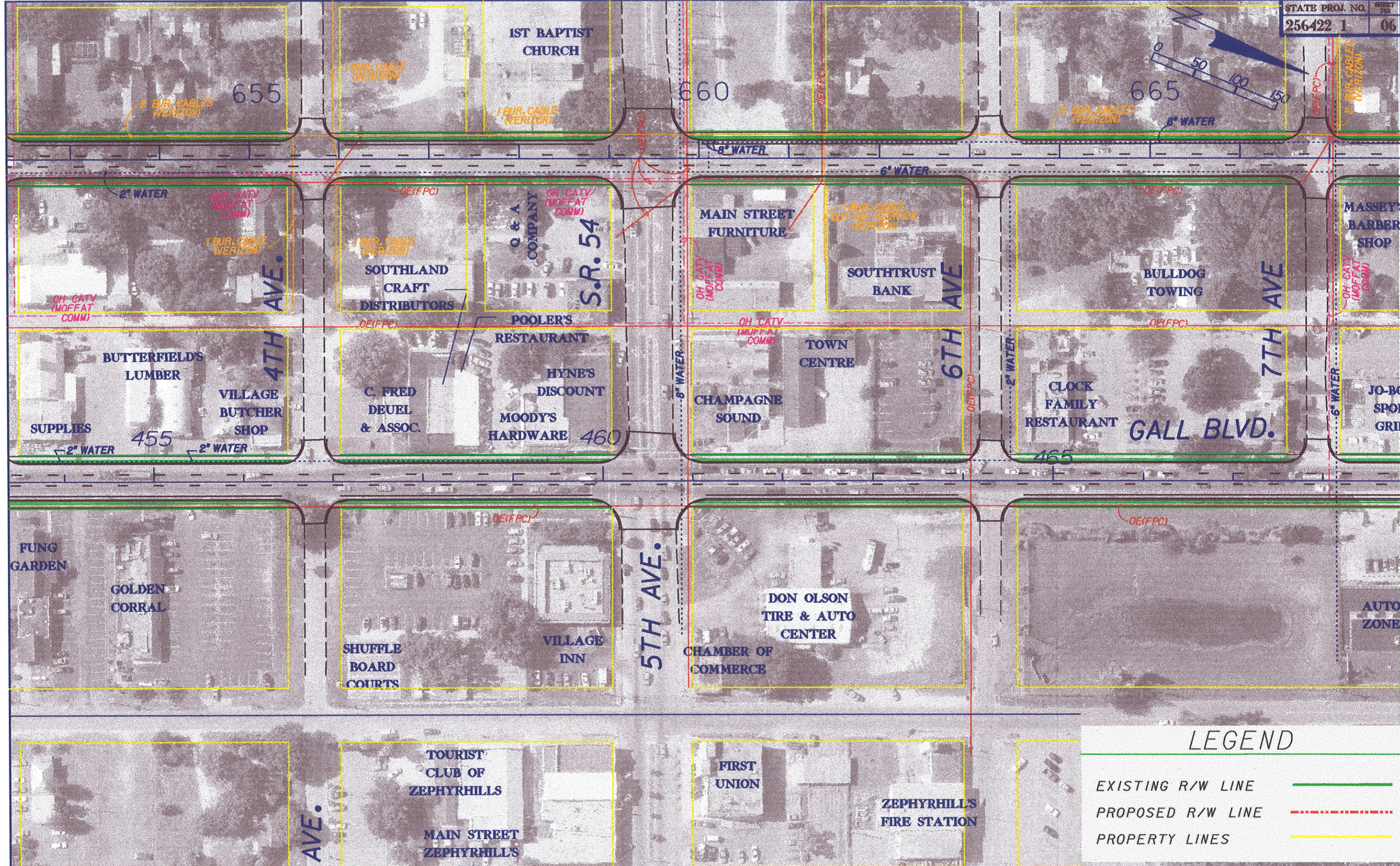
- EXISTING R/W LINE ———
- PROPOSED R/W LINE - - - - -
- PROPERTY LINES ———

REVISIONS											
DATE	BY	DESCRIPTION	DATE	BY	DESCRIPTION	DATE	BY	DESCRIPTION	DATE	BY	DESCRIPTION

EXISTING UTILITIES

FLORIDA DEPARTMENT OF TRANSPORTATION

U.S. 301 PD&E STUDY FROM S.R. 39 TO C.R. 54



LEGEND

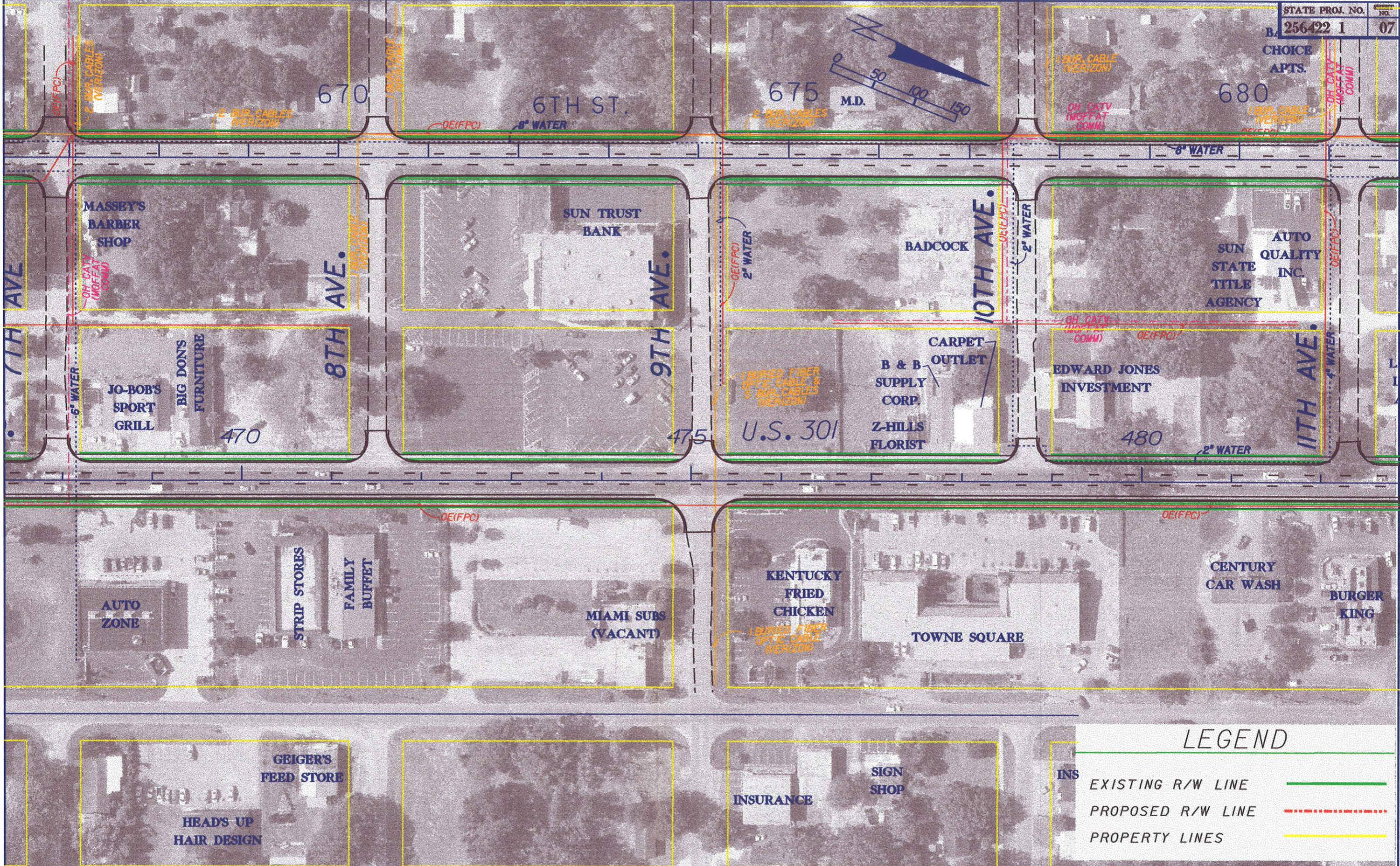
EXISTING R/W LINE ———

PROPOSED R/W LINE - - - - -

PROPERTY LINES ———

REVISIONS			
DATE	BY	DESCRIPTION	

... \2564221\emo\ut11em06.dgn 05/31/01 01:15:02 PM



LEGEND

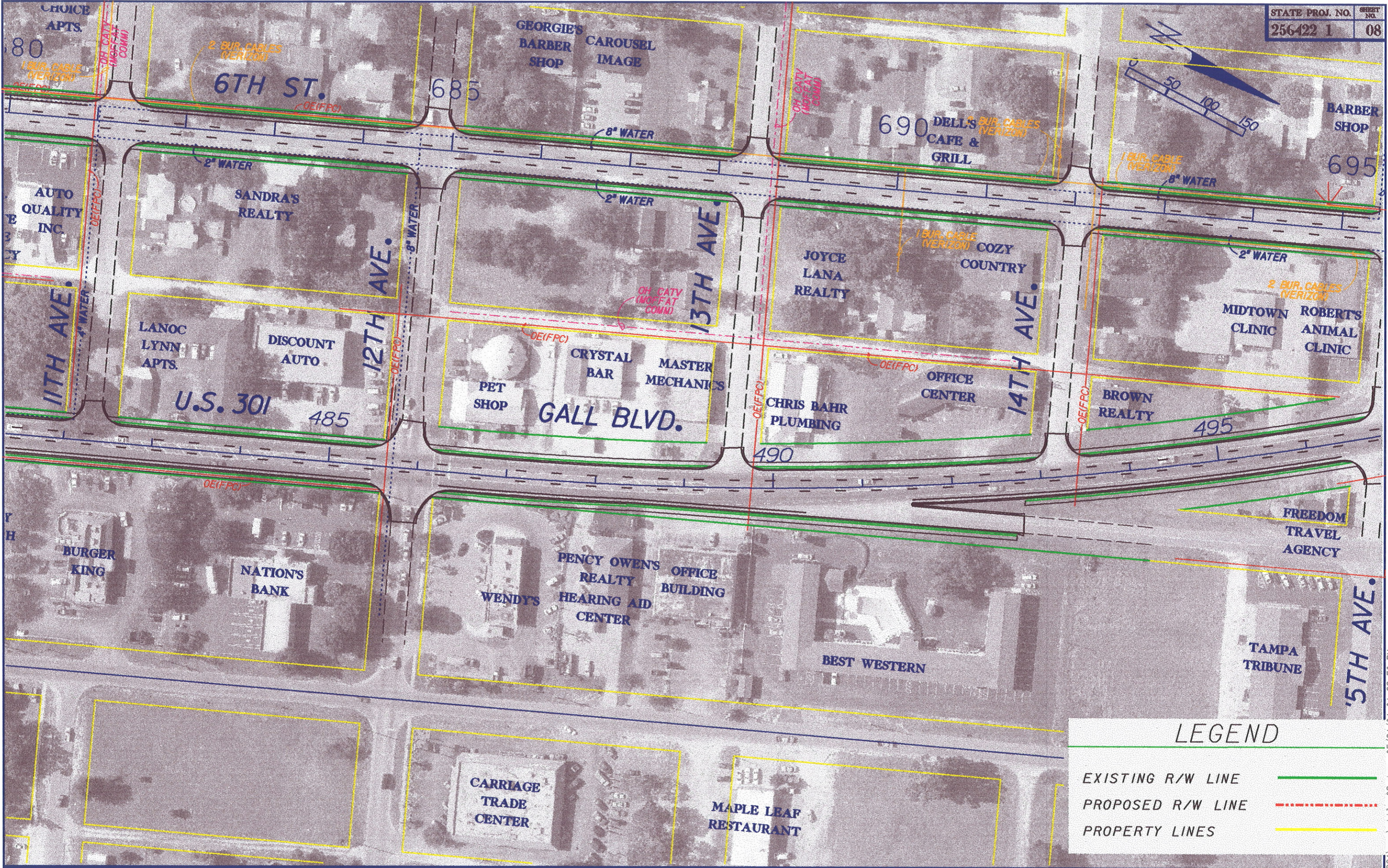
INS EXISTING R/W LINE ———

PROPOSED R/W LINE - - - - -

PROPERTY LINES ———

REVISIONS											
DATE	BY	DESCRIPTION	DATE	BY	DESCRIPTION	DATE	BY	DESCRIPTION	DATE	BY	DESCRIPTION

... \2564221\ema\util\em07.dgn 05/31/01 01:12:23 PM



LEGEND

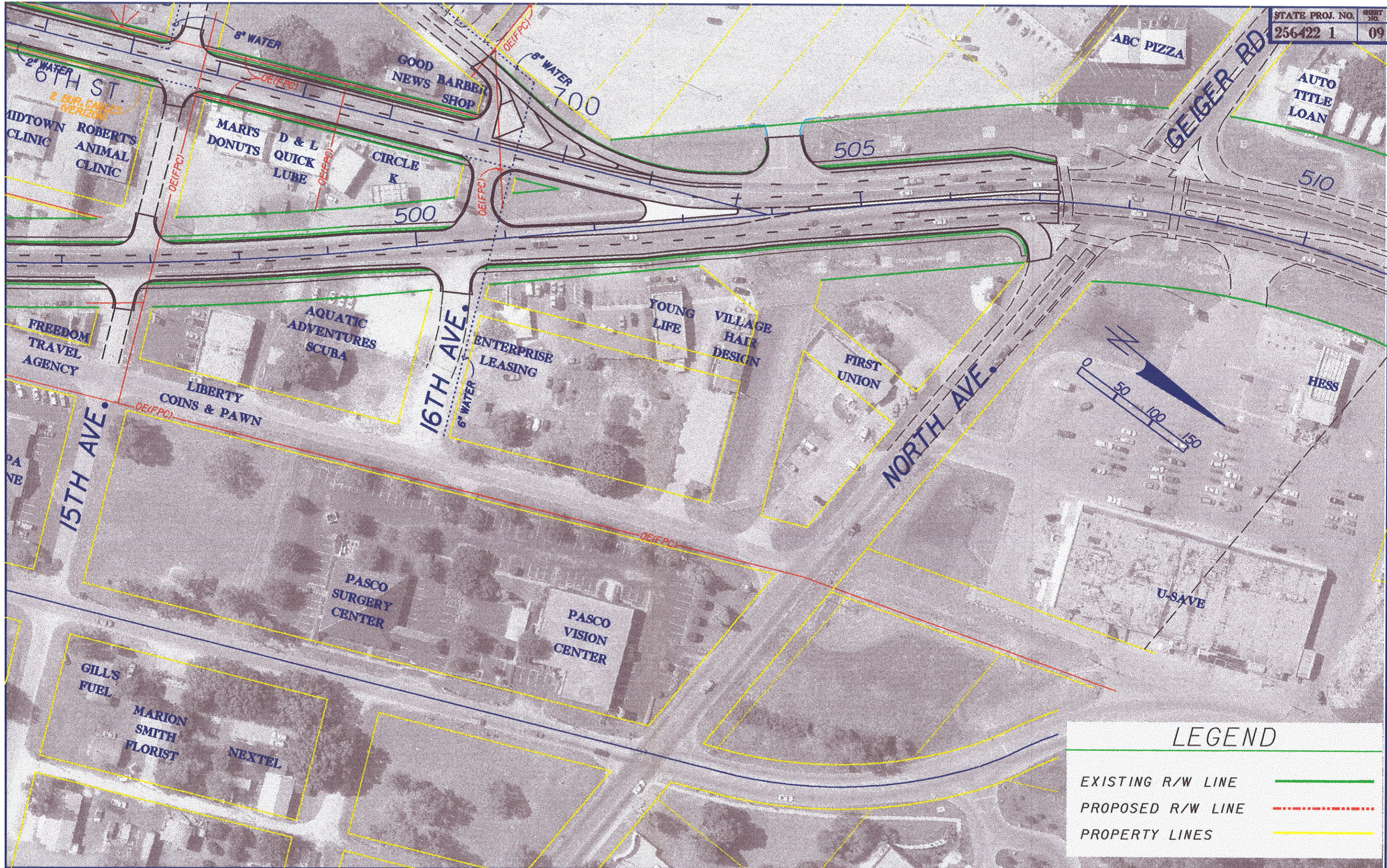
- EXISTING R/W LINE ———
- PROPOSED R/W LINE - - - - -
- PROPERTY LINES ———

REVISIONS					
DATE	BY	DESCRIPTION	DATE	BY	DESCRIPTION

EXISTING UTILITIES

FLORIDA DEPARTMENT OF TRANSPORTATION

**U.S. 301 PD&E STUDY
FROM S.R. 39 TO C.R. 54**



LEGEND

- EXISTING R/W LINE ———
- PROPOSED R/W LINE - - - - -
- PROPERTY LINES ———

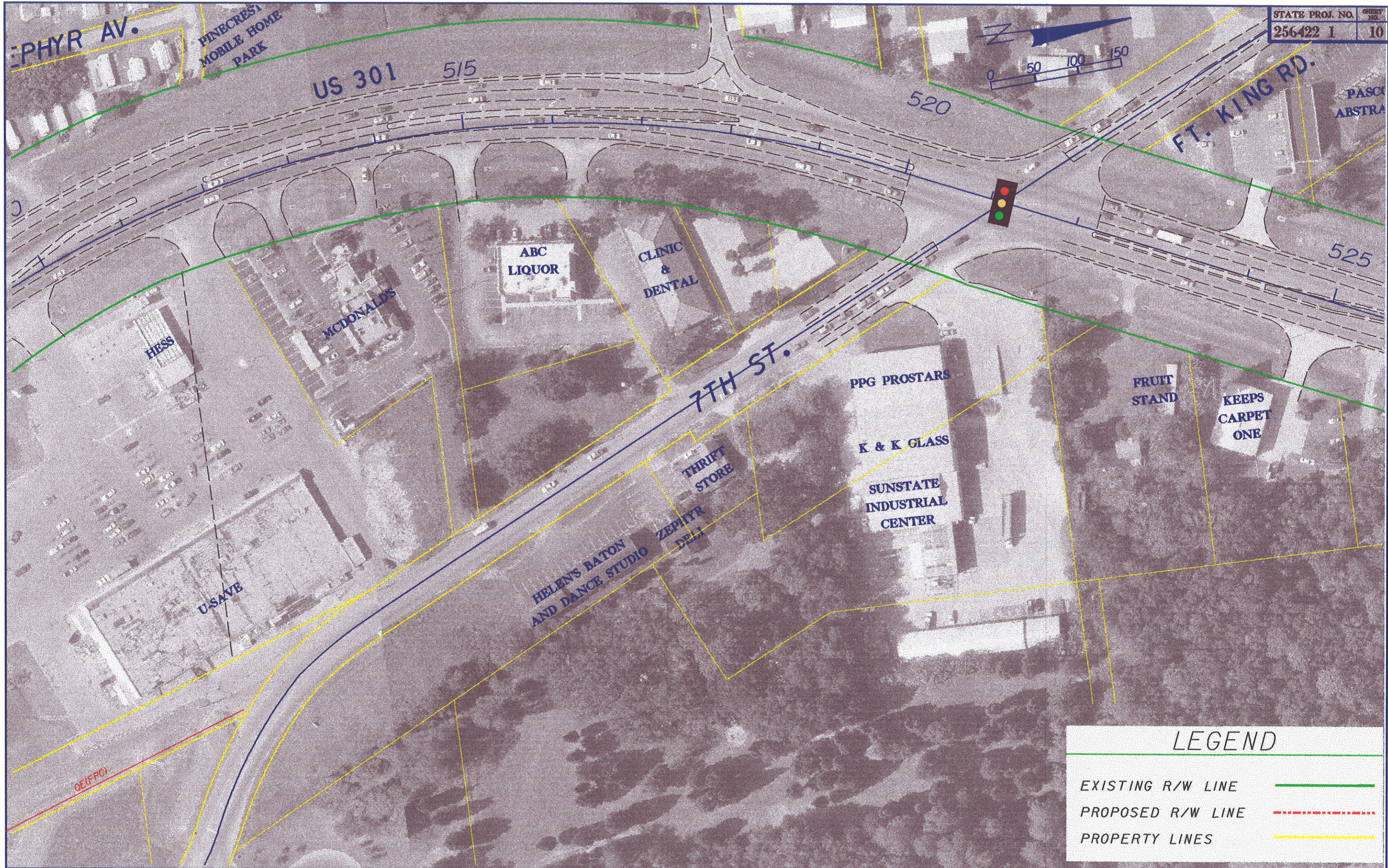
U.S. 301 PD&E STUDY
FROM S.R. 39 TO C.R. 54

REVISIONS			
DATE	BY	DESCRIPTION	

EXISTING UTILITIES

FLORIDA DEPARTMENT OF TRANSPORTATION

... \2564221\emo\utilen09.dgn 05/31/01 01:27:40 PM



LEGEND

EXISTING R/W LINE ———

PROPOSED R/W LINE - - - - -

PROPERTY LINES ———

REVISIONS											
DATE	BY	DESCRIPTION	DATE	BY	DESCRIPTION	DATE	BY	DESCRIPTION	DATE	BY	DESCRIPTION

EXISTING UTILITIES

FLORIDA DEPARTMENT OF TRANSPORTATION

**U.S. 301 PD&E STUDY
FROM S.R. 39 TO C.R. 54**



LEGEND

EXISTING R/W LINE	
PROPOSED R/W LINE	
PROPERTY LINES	

REVISIONS											
DATE	BY	DESCRIPTION	DATE	BY	DESCRIPTION	DATE	BY	DESCRIPTION	DATE	BY	DESCRIPTION

EXISTING UTILITIES

FLORIDA DEPARTMENT OF TRANSPORTATION

U.S. 301 PD&E STUDY FROM S.R. 39 TO C.R. 54

... \2564221\emo\utilm11.dgn 05/31/01 01:52:03 PM