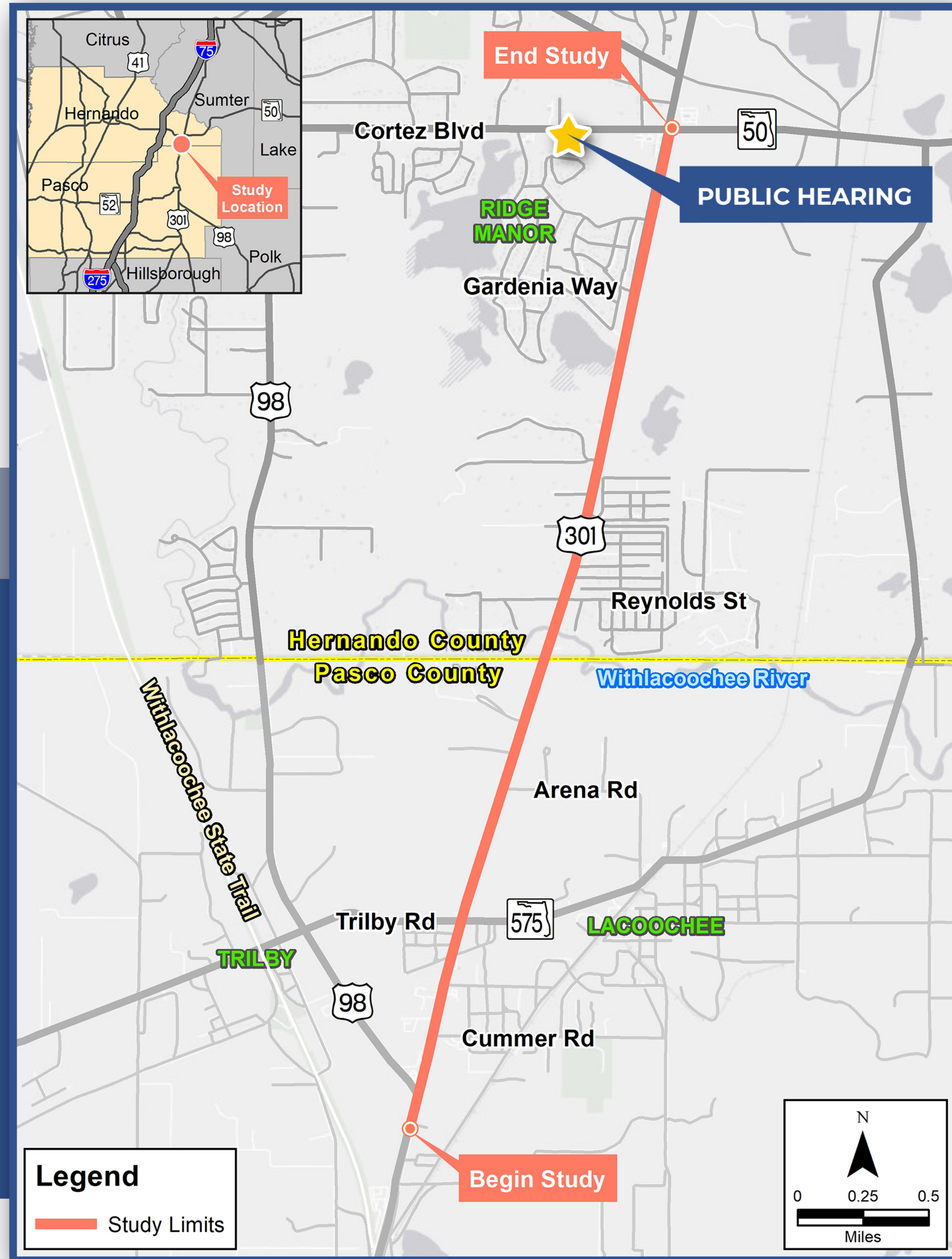




US 301 / STATE ROAD (SR) 35 PROJECT DEVELOPMENT & ENVIRONMENT (PD&E) STUDY



FROM SOUTH OF US 98 TO SR 50



WELCOME

to the Public Hearing for the US 301 / State Road (SR) 35
Project Development & Environment (PD&E) Study

PUBLIC HEARING

Hearing Date & Location

Thursday, June 24, 2021 | 5:30 p.m. - 7:30 p.m.

Community Center of Ridge Manor
34240 Cortez Blvd.
Ridge Manor, FL 33523

www.fdotd7studies.com/projects/us301-us98-to-sr50/

Public participation is solicited without regard to race, color, national origin, age, sex, religion, disability or family status.