

# **Preliminary Conceptual Design Plans**

## **US 41 (SR 45) PD&E STUDY From 12<sup>th</sup> Street to Kracker Avenue**

**WPI Segment Number 421140-8**



**Recommended  
Build Alternative**



Prepared For:  
The Florida Department of  
Transportation District Seven Modal  
Planning and Development Section

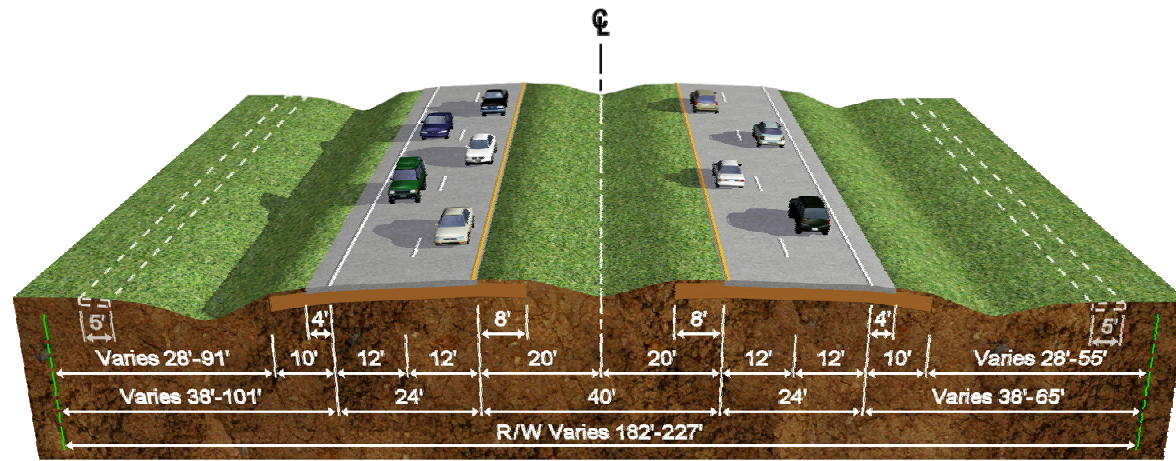
By:



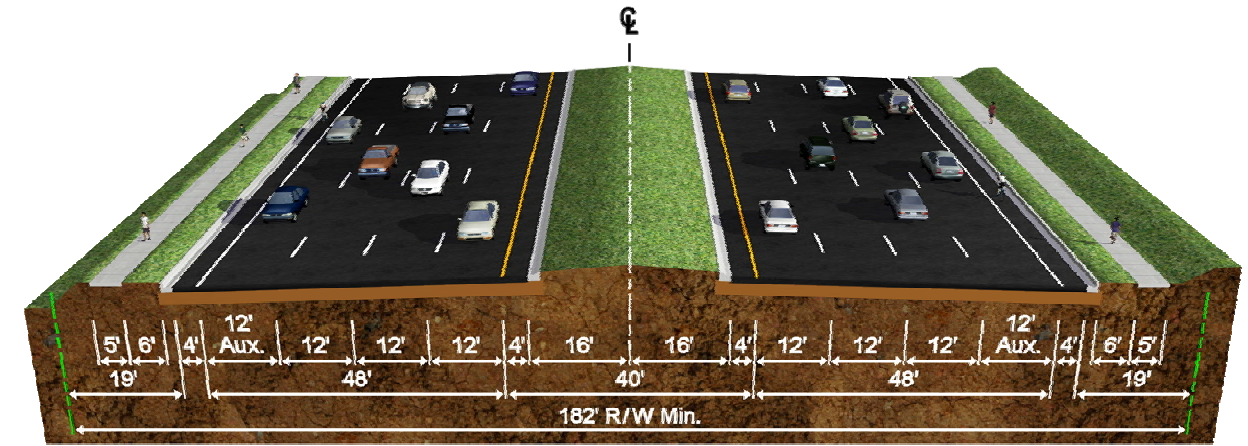
**American**  
Consulting Engineers of Florida, LLC

**Rev. July 30, 2009**

## US 41 Existing Typical Section



Existing 5-ft sidewalks are intermittent



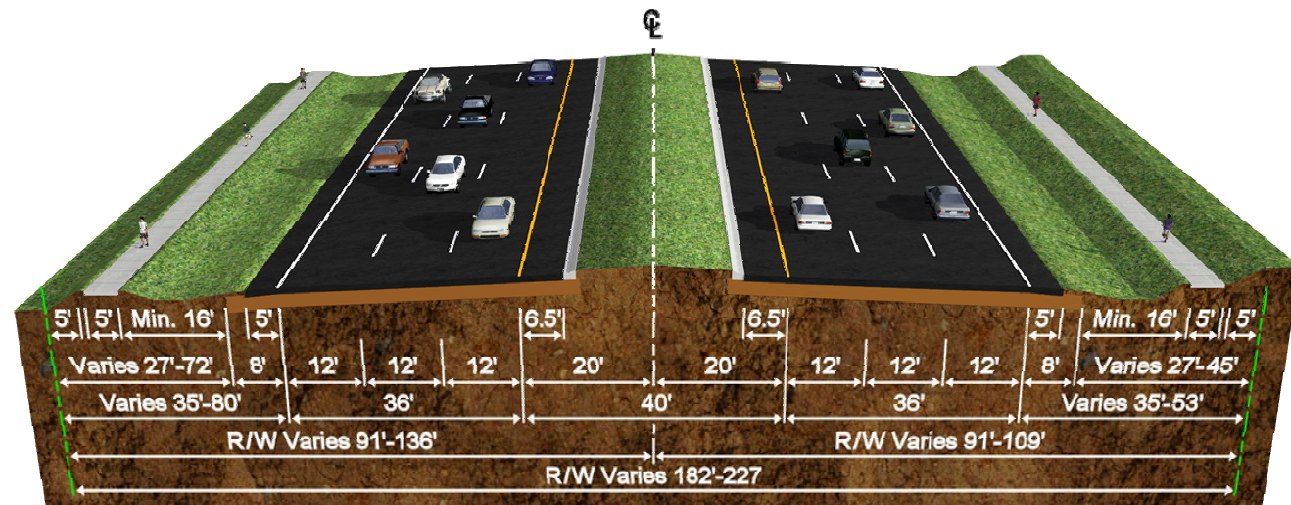
## 6-Lane Urban with Auxiliary Lanes\*

Design Speed = 45 MPH

\*This typical section applies to two segments:

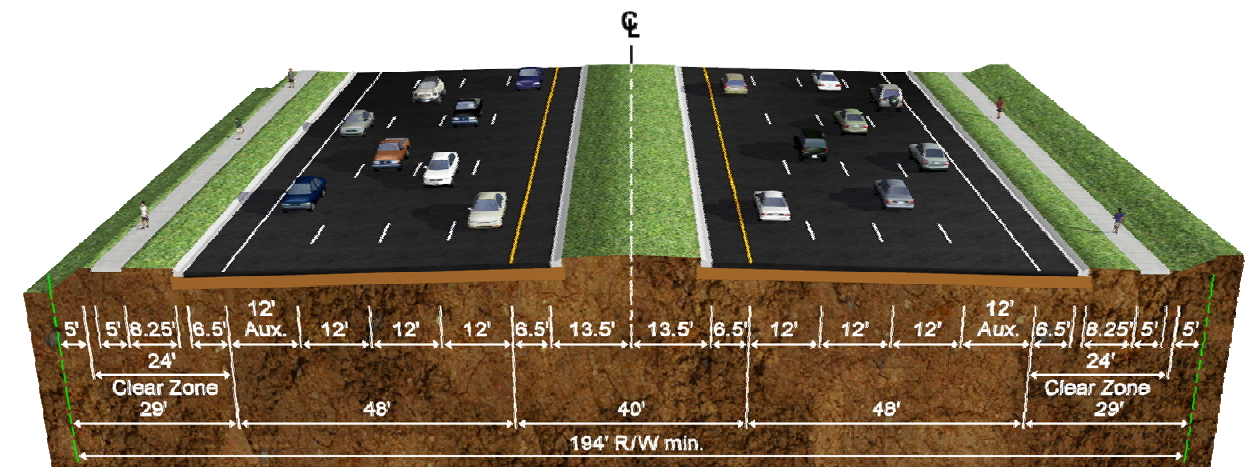
1. From Flamingo Drive to approximately 1000 ft north of Apollo Beach Blvd
2. Approximately 1000 ft south of Big Bend Road to Big Bend Road

## Suburban Typical Section



## 6-Lane Suburban

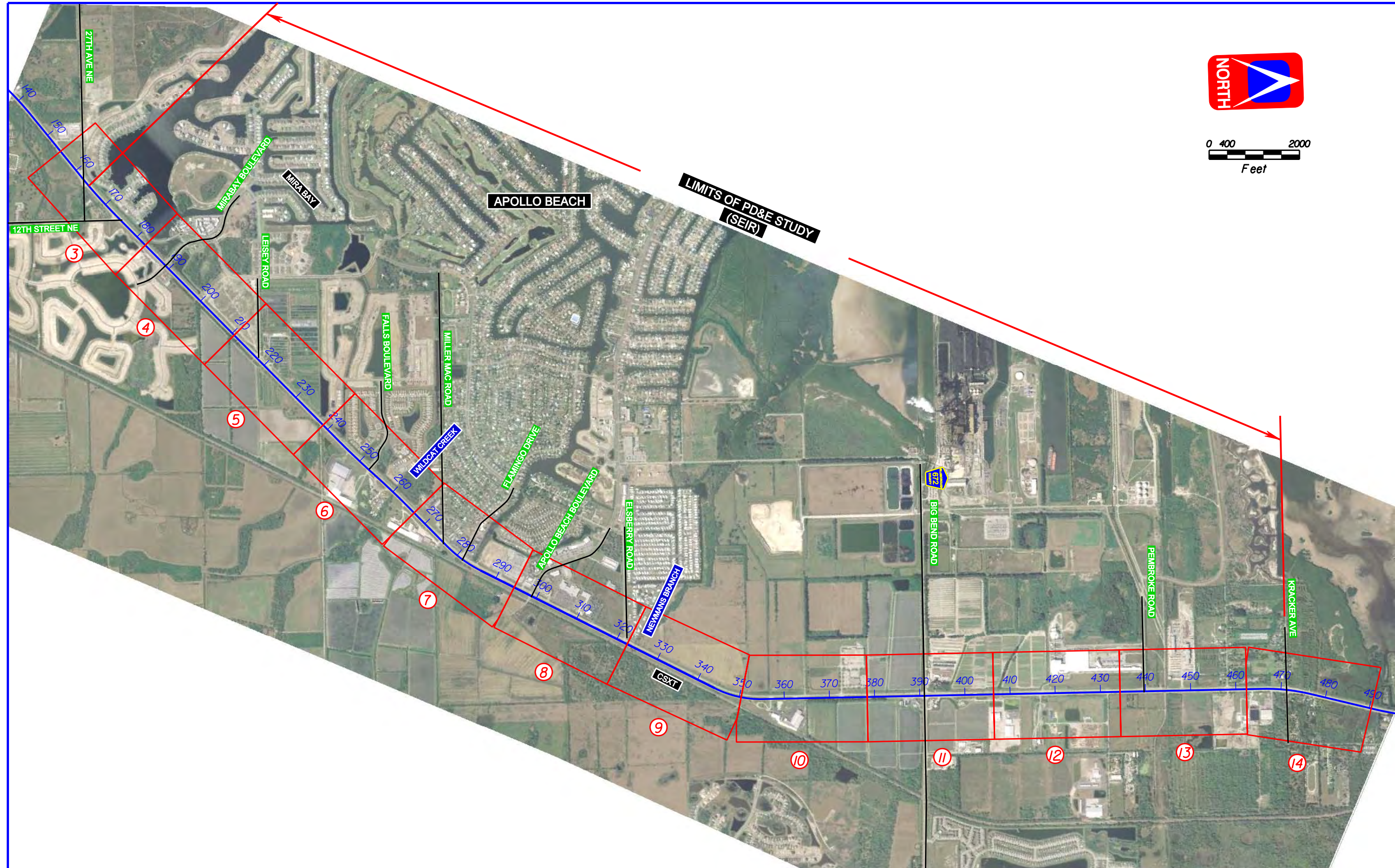
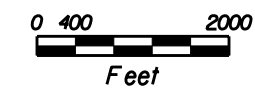
Design Speed = 50 MPH



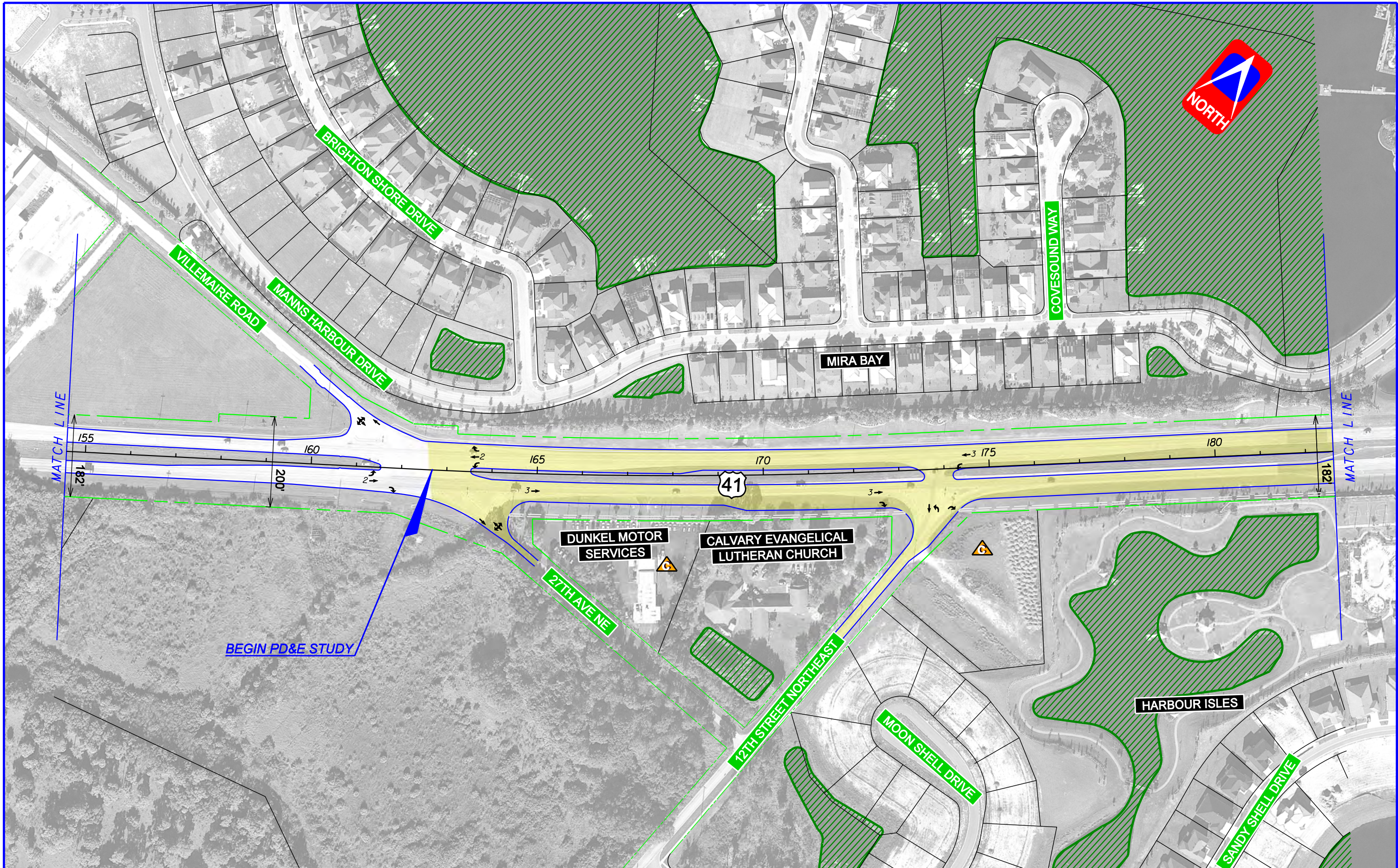
## 6-Lane High-Speed Urban with Auxiliary Lanes\*\*

Design Speed = 50 MPH

\*\*This typical section applies to US 41 from Big Bend Road to Pembroke Road, which is part of a Strategic Intermodal System (SIS) connector route which connects the Port of Tampa to I-75.

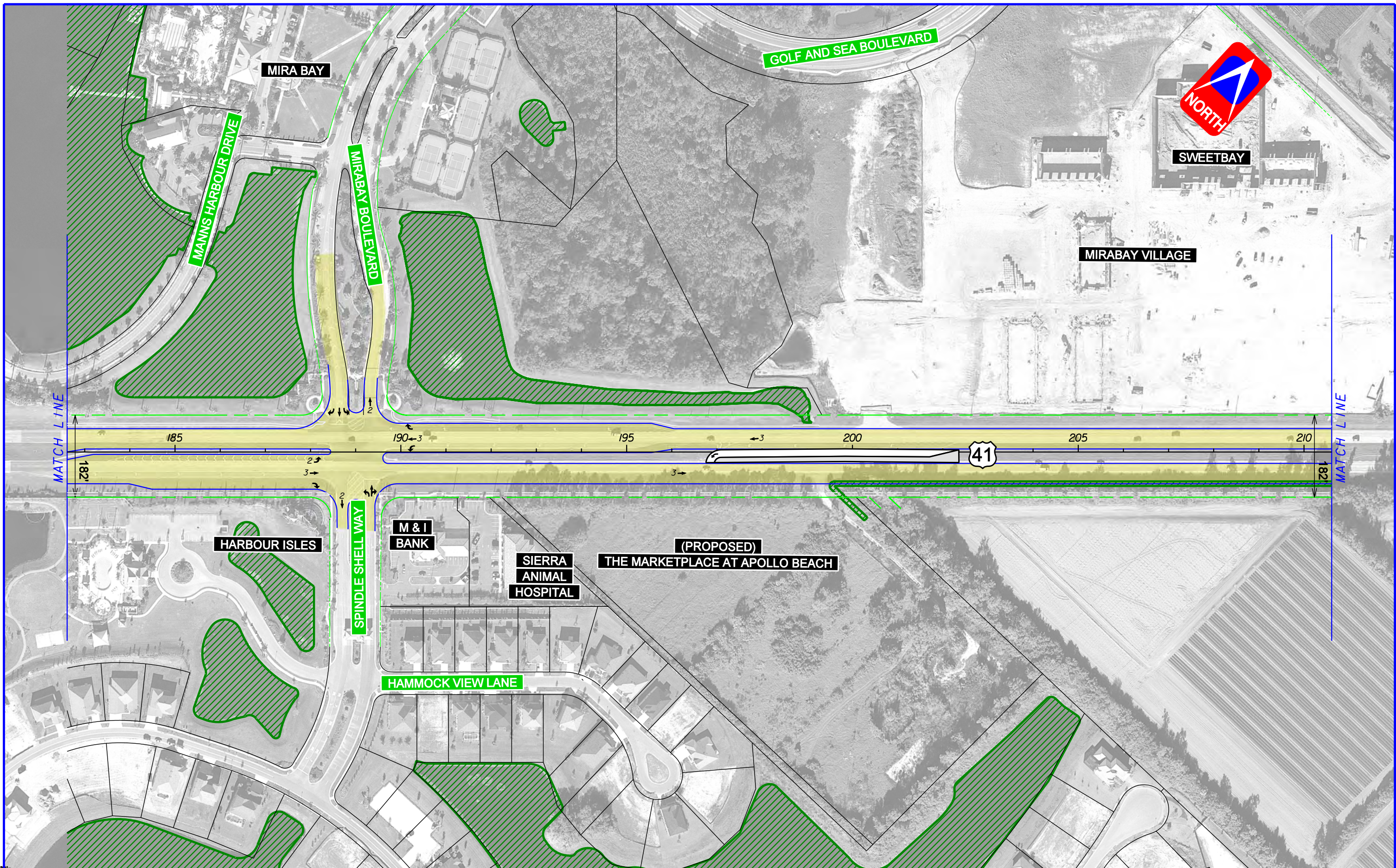


REVISIONS		REVISIONS		 <b>American</b> Consulting Engineers of Florida, LLC 2818 Cypress Ridge Blvd., Suite 200 Wesley Chapel, Florida 33544 Phone: (813) 435-2800 Fax: (813) 435-2801 Certificate of Authorization No. 9302 Jeffrey S. Novotny, P.E. No. 51083	STATE OF FLORIDA DEPARTMENT OF TRANSPORTATION			<b>SHEET LAYOUT</b> SHEET NO.
DATE	DESCRIPTION	DATE	DESCRIPTION		ROAD NO.	COUNTY	FINANCIAL PROJECT ID	
					US 41	HILLSBOROUGH	421140-8-22-01	

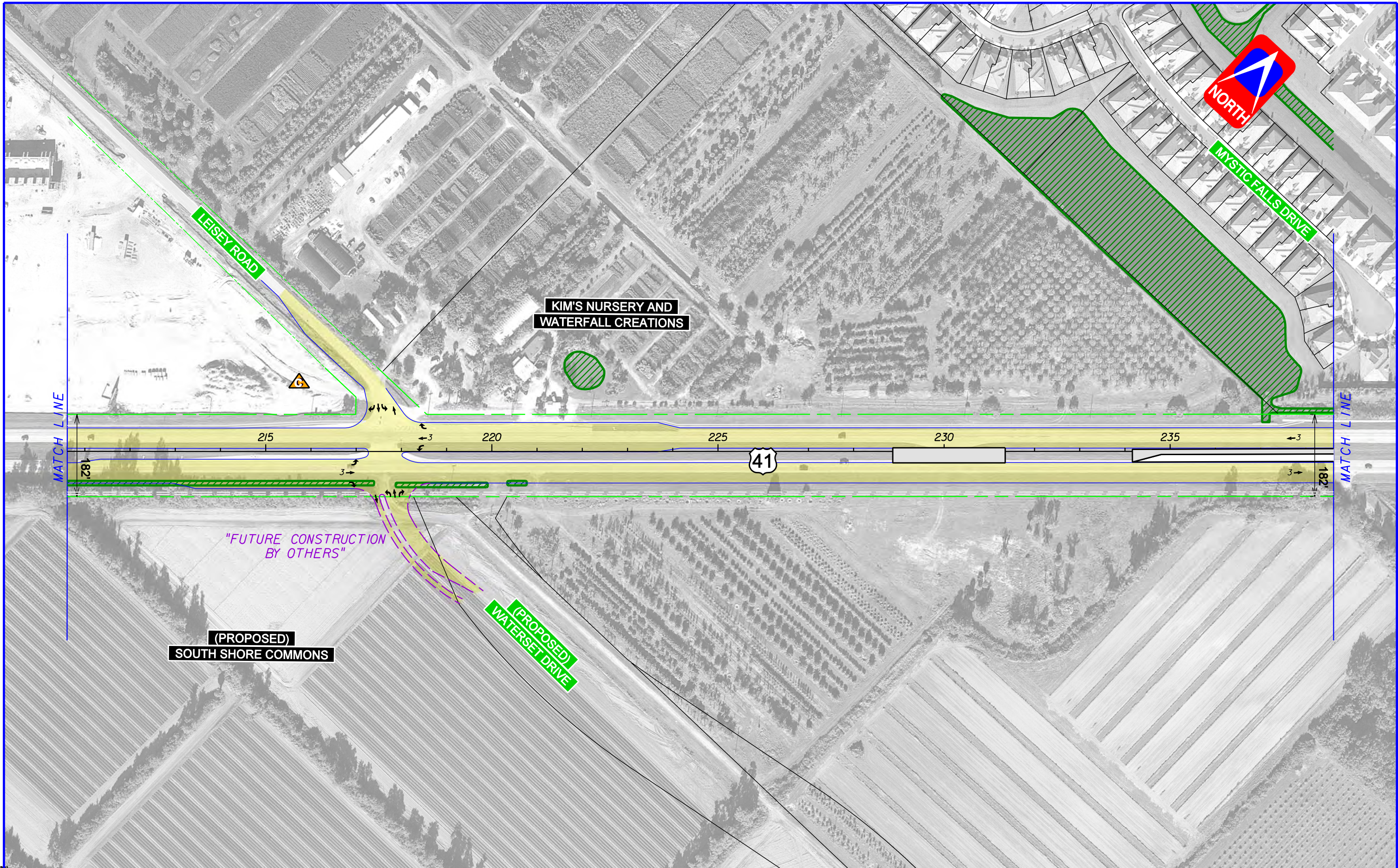


BEGIN PD&E STUDY

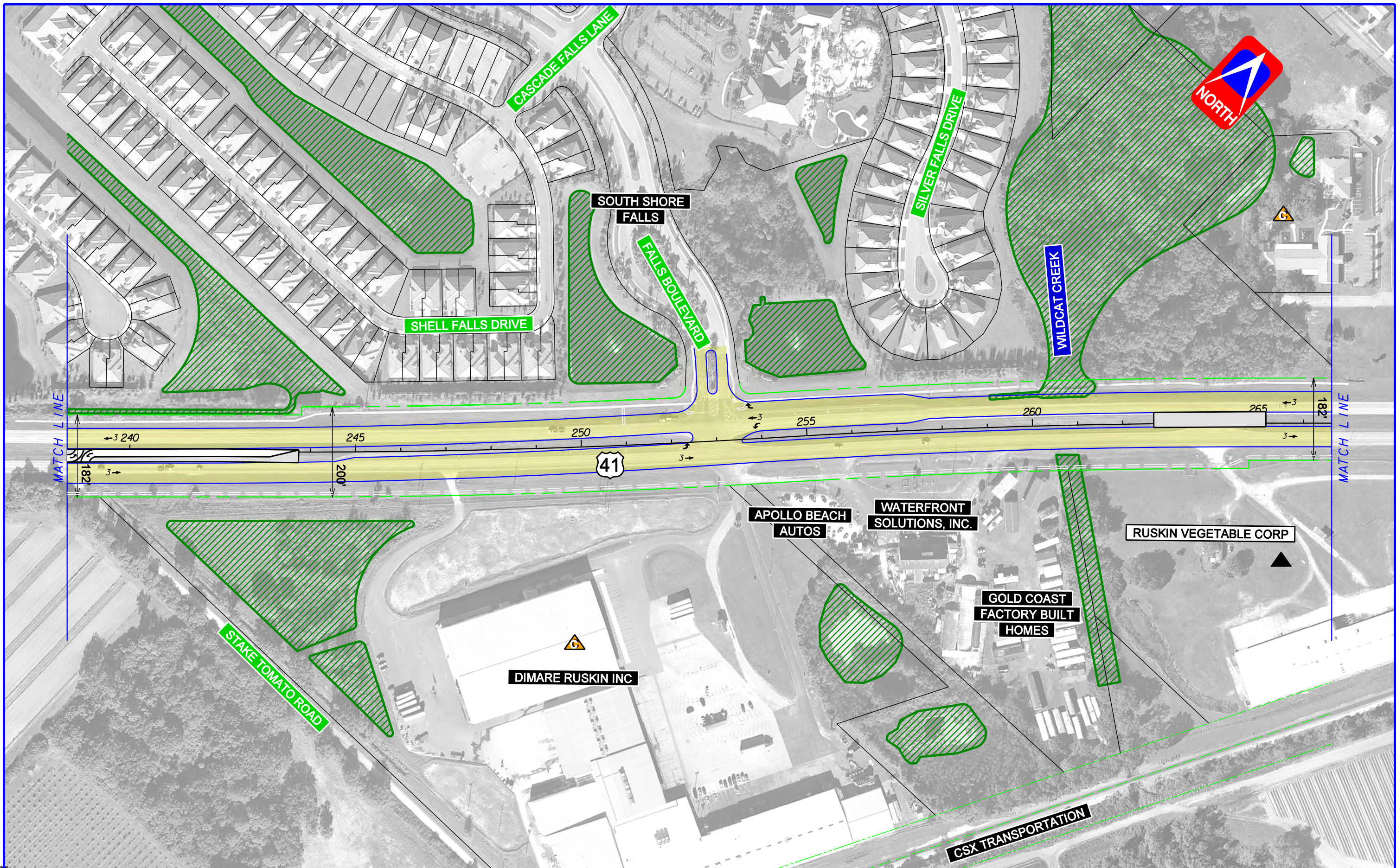
<b>LEGEND</b>	WETLAND OR OTHER SURFACE WATERS BOUNDARY	CLOSE MEDIAN OPENING	FUTURE ROAD CONSTRUCTED BY OTHERS	 DATE OF AERIAL: OCTOBER, 2008	 <b>American</b> Consulting Engineers of Florida, LLC 2818 Cypress Ridge Blvd., Suite 200 Wesley Chapel, Florida 33544 Phone: (813) 435-2600 Fax: (813) 435-2601 Certificate of Authorization No. 9302 Jeffrey S. Novotny, P.E. No. 51083	<b>US 41 (SR 45) PD&amp;E STUDY</b> <b>CONCEPTUAL DESIGN</b> FPID 421140-8-22-01	SHEET NO.
	POTENTIALLY CONTAMINATED SITE	POTENTIAL DIRECTIONAL MEDIAN OPENING	PROPOSED EDGE OF PAVEMENT				3
SIDEWALK CONSTRUCTED UNDER WPI # 413399-1	PROPOSED ROADWAY	PROPERTY LINES	EXISTING ROW				
PROPOSED SIDEWALK	NUMBER OF LANES	PROPOSED ROW TO BE ACQUIRED					



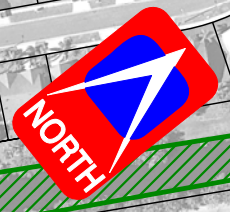
<b>LEGEND</b>	WETLAND OR OTHER SURFACE WATERS BOUNDARY	CLOSE MEDIAN OPENING	FUTURE ROAD CONSTRUCTED BY OTHERS	 DATE OF AERIAL: OCTOBER, 2008	 <b>American</b> Consulting Engineers of Florida, LLC 2818 Cypress Ridge Blvd., Suite 200 Wesley Chapel, Florida 33544 Phone: (813) 435-2600 Fax: (813) 435-2601 Certificate of Authorization No. 9302 Jeffrey S. Novotny, P.E. No. 51083	<b>US 41 (SR 45) PD&amp;E STUDY</b> <b>CONCEPTUAL DESIGN</b> FPID 421140-8-22-01	SHEET NO.
	POTENTIALLY CONTAMINATED SITE	POTENTIAL DIRECTIONAL MEDIAN OPENING	PROPOSED EDGE OF PAVEMENT				PROPERTY LINES
SIDEWALK CONSTRUCTED UNDER WPI # 413399-1 PROPOSED SIDEWALK	PROPOSED ROADWAY	PROPOSED ROW TO BE ACQUIRED	NUMBER OF LANES				



<b>LEGEND</b>	WETLAND OR OTHER SURFACE WATERS BOUNDARY	CLOSE MEDIAN OPENING	FUTURE ROAD CONSTRUCTED BY OTHERS	 DATE OF AERIAL: OCTOBER, 2008	 <b>American</b> Consulting Engineers of Florida, LLC 2818 Cypress Ridge Blvd., Suite 200 Wesley Chapel, Florida 33544 Phone: (813) 435-2600 Fax: (813) 435-2601 Certificate of Authorization No. 9302 Jeffrey S. Novotny, P.E. No. 51083	<b>US 41 (SR 45) PD&amp;E STUDY</b> <b>CONCEPTUAL DESIGN</b> FPID 421140-8-22-01	SHEET NO.
	POTENTIALLY CONTAMINATED SITE	POTENTIAL DIRECTIONAL MEDIAN OPENING	PROPOSED EDGE OF PAVEMENT				5
SIDEWALK CONSTRUCTED UNDER WPI # 413399-1	PROPOSED ROADWAY	PROPERTY LINES	EXISTING ROW				
PROPOSED SIDEWALK	NUMBER OF LANES	PROPOSED ROW TO BE ACQUIRED					

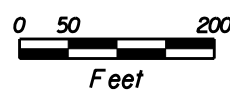


<b>LEGEND</b>	WETLAND OR OTHER SURFACE WATERS BOUNDARY	CLOSE MEDIAN OPENING	FUTURE ROAD CONSTRUCTED BY OTHERS	 DATE OF AERIAL: OCTOBER, 2008	 <b>American</b> Consulting Engineers of Florida, LLC 2818 Cypress Ridge Blvd., Suite 200 Wesley Chapel, Florida 33544 Phone: (813) 435-2600 Fax: (813) 435-2601 Certificate of Authorization No. 9302 Jeffrey S. Novotny, P.E. No. 51083	<b>US 41 (SR 45) PD&amp;E STUDY</b> <b>CONCEPTUAL DESIGN</b> FPID 421140-8-22-01	SHEET NO.
	POTENTIALLY CONTAMINATED SITE	POTENTIAL DIRECTIONAL MEDIAN OPENING	PROPOSED EDGE OF PAVEMENT				PROPERTY LINES
SIDEWALK CONSTRUCTED UNDER WPI # 413399-1	PROPOSED ROADWAY	EXISTING ROW	PROPOSED ROW TO BE ACQUIRED				
PROPOSED SIDEWALK	NUMBER OF LANES						



<b>LEGEND</b>	WETLAND OR OTHER SURFACE WATERS BOUNDARY	CLOSE MEDIAN OPENING	FUTURE ROAD CONSTRUCTED BY OTHERS
	POTENTIALLY CONTAMINATED SITE	POTENTIAL DIRECTIONAL MEDIAN OPENING	PROPOSED EDGE OF PAVEMENT
	SIDEWALK CONSTRUCTED UNDER WPI # 413399-1	PROPOSED ROADWAY	PROPERTY LINES
	PROPOSED SIDEWALK	NUMBER OF LANES	EXISTING ROW
		PROPOSED ROW TO BE ACQUIRED	PROPOSED ROW TO BE ACQUIRED

DATE OF AERIAL: OCTOBER, 2008



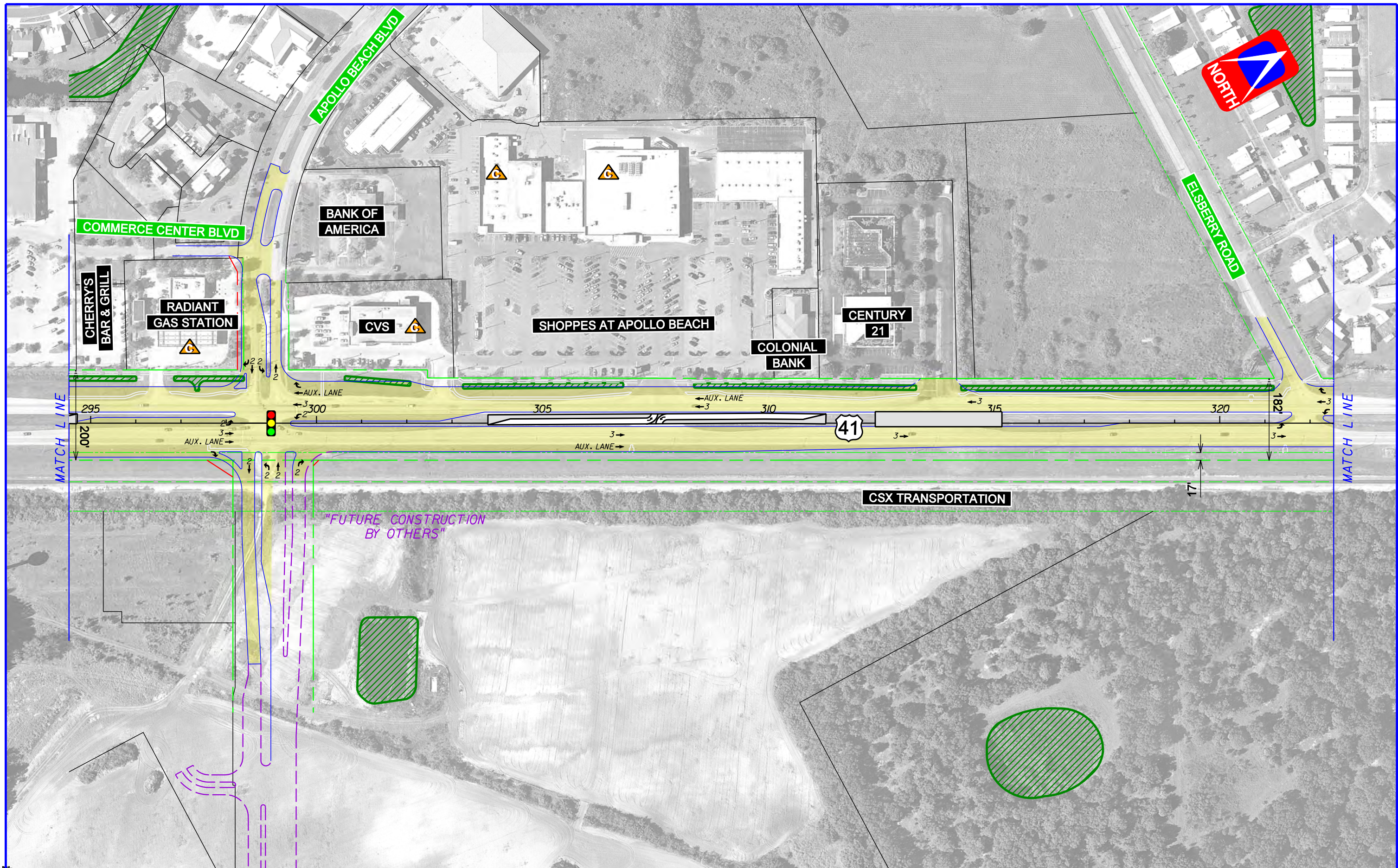
**American**  
 Consulting Engineers of Florida, LLC  
 2818 Cypress Ridge Blvd., Suite 200  
 Wesley Chapel, Florida 33544  
 Phone: (813) 435-2600 Fax: (813) 435-2601  
 Certificate of Authorization No. 9302  
 Jeffrey S. Novotny, P.E. No. 51083

**US 41 (SR 45) PD&E STUDY**  
**CONCEPTUAL DESIGN**

FPID 421140-8-22-01

SHEET NO.	7
-----------	---





<b>LEGEND</b>	WETLAND OR OTHER SURFACE WATERS BOUNDARY	CLOSE MEDIAN OPENING	FUTURE ROAD CONSTRUCTED BY OTHERS
	POTENTIALLY CONTAMINATED SITE	POTENTIAL DIRECTIONAL MEDIAN OPENING	PROPOSED EDGE OF PAVEMENT
SIDEWALK CONSTRUCTED UNDER WPI # 413399-1	PROPOSED ROADWAY	PROPERTY LINES	EXISTING ROW
PROPOSED SIDEWALK	NUMBER OF LANES	PROPOSED ROW TO BE ACQUIRED	

0 50 200  
Feet

DATE OF AERIAL: OCTOBER, 2008

**American**  
Consulting Engineers of Florida, LLC  
2818 Cypress Ridge Blvd., Suite 200  
Wesley Chapel, Florida 33544  
Phone: (813) 435-2600 Fax: (813) 435-2601  
Certificate of Authorization No. 9302  
Jeffrey S. Novotny, P.E. No. 51083

**US 41 (SR 45) PD&E STUDY**  
**CONCEPTUAL DESIGN**

FPID 421140-8-22-01

SHEET NO.  
8



APOLLO BEACH HOLDINGS

NORTH SAINT GEORGE CIRCLE

NEWMANS BRANCH

MATCH LINE

MATCH LINE

41

CSX TRANSPORTATION

TECO

<b>LEGEND</b>	WETLAND OR OTHER SURFACE WATERS BOUNDARY	CLOSE MEDIAN OPENING	FUTURE ROAD CONSTRUCTED BY OTHERS	 DATE OF AERIAL: OCTOBER, 2008	 <b>American</b> Consulting Engineers of Florida, LLC 2818 Cypress Ridge Blvd., Suite 200 Wesley Chapel, Florida 33544 Phone: (813) 435-2600 Fax: (813) 435-2601 Certificate of Authorization No. 9302 Jeffrey S. Novotny, P.E. No. 51083	<b>US 41 (SR 45) PD&amp;E STUDY</b> <b>CONCEPTUAL DESIGN</b> FPID 421140-8-22-01	SHEET NO. 9
	POTENTIALLY CONTAMINATED SITE	POTENTIAL DIRECTIONAL MEDIAN OPENING	PROPOSED EDGE OF PAVEMENT				
SIDEWALK CONSTRUCTED UNDER WPI # 413399-1	PROPOSED ROADWAY	EXISTING ROW	PROPOSED ROW TO BE ACQUIRED				
PROPOSED SIDEWALK	NUMBER OF LANES						



SUMMIT STAINLESS STEEL

BRADCO SUPPLY CORPORATION

TECO

PACIFIC TOMATO GROWERS

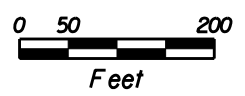
CSX TRANSPORTATION



MATCH LINE

MATCH LINE

<b>LEGEND</b>	WETLAND OR OTHER SURFACE WATERS BOUNDARY	CLOSE MEDIAN OPENING	FUTURE ROAD CONSTRUCTED BY OTHERS
	POTENTIALLY CONTAMINATED SITE	POTENTIAL DIRECTIONAL MEDIAN OPENING	PROPOSED EDGE OF PAVEMENT
	SIDEWALK CONSTRUCTED UNDER WPI # 413399-1	PROPOSED ROADWAY	PROPERTY LINES
	PROPOSED SIDEWALK	NUMBER OF LANES	EXISTING ROW
			PROPOSED ROW TO BE ACQUIRED



DATE OF AERIAL: OCTOBER, 2008

**American**  
Consulting Engineers of Florida, LLC  
2818 Cypress Ridge Blvd., Suite 200  
Wesley Chapel, Florida 33544  
Phone: (813) 435-2600 Fax: (813) 435-2601  
Certificate of Authorization No. 9302  
Jeffrey S. Novotny, P.E. No. 51083

**US 41 (SR 45) PD&E STUDY  
CONCEPTUAL DESIGN**

FPID 421140-8-22-01

SHEET NO.

10



**PROPOSED DEVELOPMENT**

**ELSBERRY NURSERY FARMS**

**APOLLO BEACH INVESTMENTS**

**BIG BEND ROAD**

**41**

**KEEP IT GREEN NURSERY**

**CHEVRON**

**7-11**

**EXPECTED RELOCATION**

MATCH LINE

MATCH LINE

<b>LEGEND</b>	WETLAND OR OTHER SURFACE WATERS BOUNDARY	CLOSE MEDIAN OPENING	FUTURE ROAD CONSTRUCTED BY OTHERS	 DATE OF AERIAL: OCTOBER, 2008	 <b>American</b> Consulting Engineers of Florida, LLC 2818 Cypress Ridge Blvd., Suite 200 Wesley Chapel, Florida 33544 Phone: (813) 435-2600 Fax: (813) 435-2601 Certificate of Authorization No. 9302 Jeffrey S. Novotny, P.E. No. 51083	<b>US 41 (SR 45) PD&amp;E STUDY</b> <b>CONCEPTUAL DESIGN</b> FPID 421140-8-22-01	SHEET NO. 11
	POTENTIALLY CONTAMINATED SITE	POTENTIAL DIRECTIONAL MEDIAN OPENING	PROPOSED EDGE OF PAVEMENT				
SIDEWALK CONSTRUCTED UNDER WPI # 413399-1	PROPOSED ROADWAY	EXISTING ROW	PROPOSED ROW TO BE ACQUIRED				
PROPOSED SIDEWALK	3 → NUMBER OF LANES						

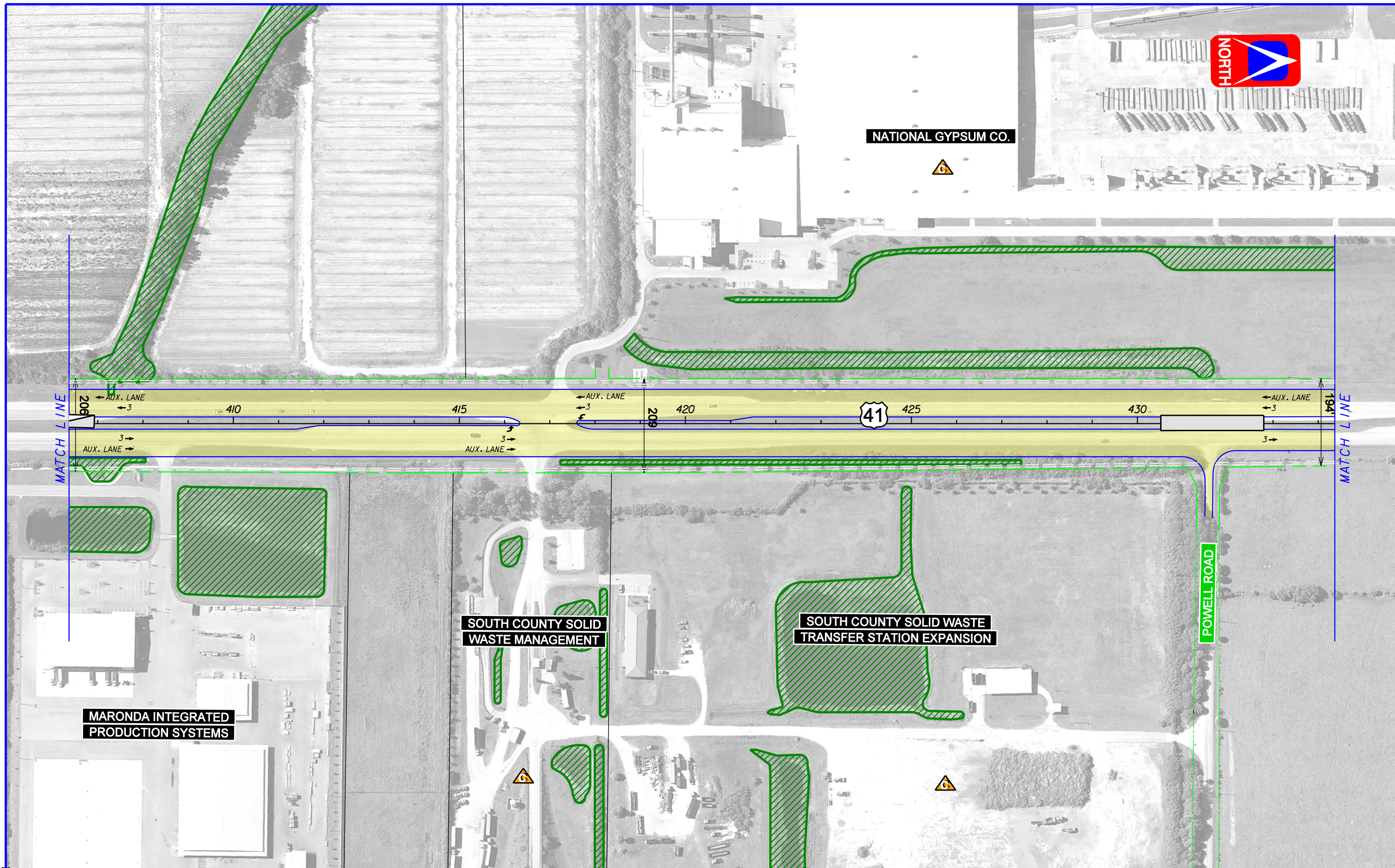


NATIONAL GYPSUM CO.

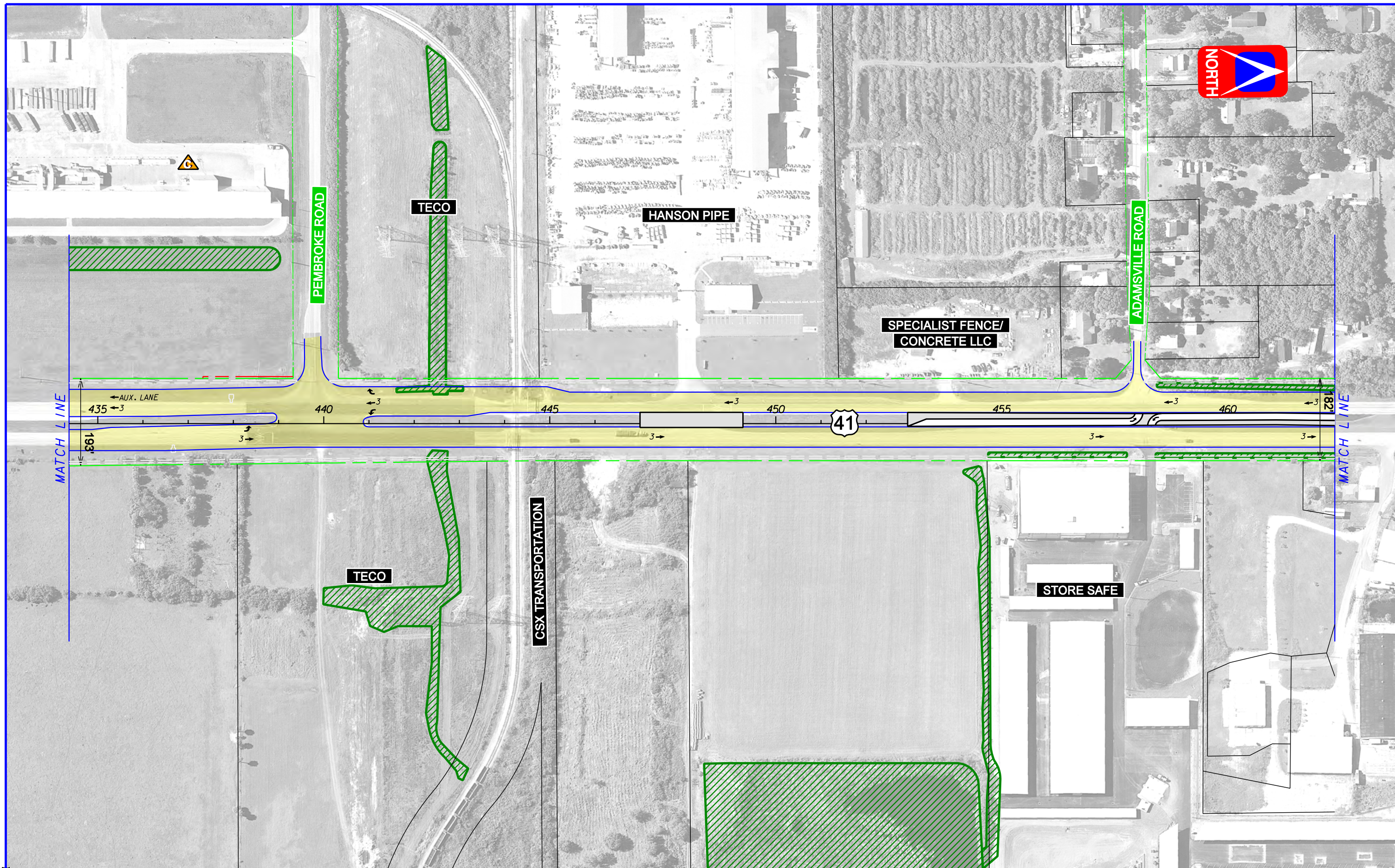


MATCH LINE

MATCH LINE



<b>LEGEND</b>	WETLAND OR OTHER SURFACE WATERS BOUNDARY	CLOSE MEDIAN OPENING	FUTURE ROAD CONSTRUCTED BY OTHERS	 Feet DATE OF AERIAL: OCTOBER, 2008	 <b>American</b> Consulting Engineers of Florida, LLC 2818 Cypress Ridge Blvd., Suite 200 Wesley Chapel, Florida 33544 Phone: (813) 435-2600 Fax: (813) 435-2601 Certificate of Authorization No. 9302 Jeffrey S. Novotny, P.E. No. 51083	<b>US 41 (SR 45) PD&amp;E STUDY</b> <b>CONCEPTUAL DESIGN</b> FPID 421140-8-22-01	SHEET NO.  12
	POTENTIALLY CONTAMINATED SITE	POTENTIAL DIRECTIONAL MEDIAN OPENING	PROPOSED EDGE OF PAVEMENT				
SIDEWALK CONSTRUCTED UNDER WPI # 413399-1 PROPOSED SIDEWALK	PROPOSED ROADWAY	PROPOSED ROW TO BE ACQUIRED	EXISTING ROW				
NUMBER OF LANES							



<b>LEGEND</b>	WETLAND OR OTHER SURFACE WATERS BOUNDARY	CLOSE MEDIAN OPENING	FUTURE ROAD CONSTRUCTED BY OTHERS	 DATE OF AERIAL: OCTOBER, 2008	 <b>American</b> Consulting Engineers of Florida, LLC 2818 Cypress Ridge Blvd., Suite 200 Wesley Chapel, Florida 33544 Phone: (813) 435-2600 Fax: (813) 435-2601 Certificate of Authorization No. 9302 Jeffrey S. Novotny, P.E. No. 51083	<b>US 41 (SR 45) PD&amp;E STUDY</b> <b>CONCEPTUAL DESIGN</b> FPID 421140-8-22-01	SHEET NO. 13
	POTENTIALLY CONTAMINATED SITE	POTENTIAL DIRECTIONAL MEDIAN OPENING	PROPOSED EDGE OF PAVEMENT				
SIDEWALK CONSTRUCTED UNDER WPI # 413399-1	PROPOSED ROADWAY	EXISTING ROW	PROPOSED ROW TO BE ACQUIRED				
PROPOSED SIDEWALK	NUMBER OF LANES						



END PD&E STUDY

KRACKER AVENUE

BANNER SUPPLY

MATCH LINE

MATCH LINE



470

475

480

485

490

465

182

182

<b>LEGEND</b>	WETLAND OR OTHER SURFACE WATERS BOUNDARY	CLOSE MEDIAN OPENING	FUTURE ROAD CONSTRUCTED BY OTHERS	 DATE OF AERIAL: OCTOBER, 2008	 <b>American</b> Consulting Engineers of Florida, LLC 2818 Cypress Ridge Blvd., Suite 200 Wesley Chapel, Florida 33544 Phone: (813) 435-2600 Fax: (813) 435-2601 Certificate of Authorization No. 9302 Jeffrey S. Novotny, P.E. No. 51083	<b>US 41 (SR 45) PD&amp;E STUDY</b> <b>CONCEPTUAL DESIGN</b> SHEET NO. 14 FPID 421140-8-22-01
	POTENTIALLY CONTAMINATED SITE	POTENTIAL DIRECTIONAL MEDIAN OPENING	PROPOSED EDGE OF PAVEMENT			
SIDEWALK CONSTRUCTED UNDER WPI # 413399-1	PROPOSED ROADWAY	EXISTING ROW	PROPOSED ROW TO BE ACQUIRED			
PROPOSED SIDEWALK	NUMBER OF LANES					