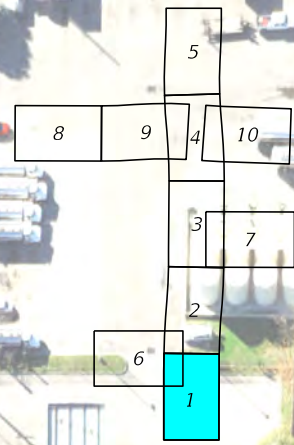
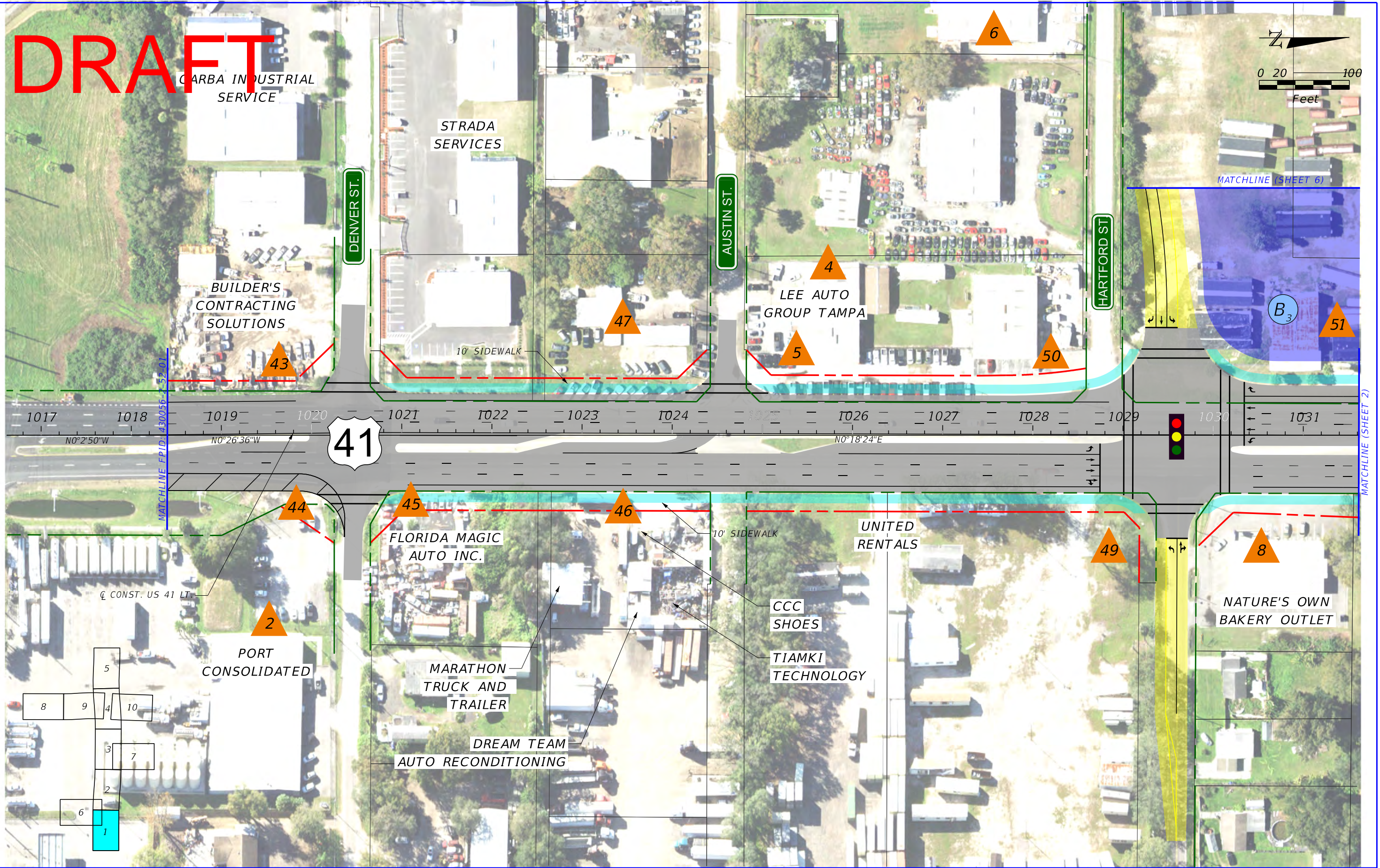
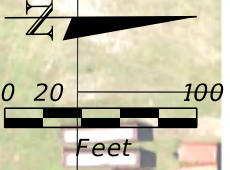


# DRAFT



**LEGEND**

PROPOSED ASPHALT PAVEMENT	PROPOSED POND	PROPOSED R/W LINE
PROPOSED CONCRETE PAVEMENT	WETLANDS	EXISTING R/W LINE
PROPOSED SIDEWALK	PROPOSED BUSINESS RELOCATION	EXISTING PARCEL LINE
PROPOSED BRIDGE	PROPOSED RESIDENTIAL RELOCATION	POTENTIAL CONTAMINATION SITE

US 41/SR 45/South 50th St at CSX Grade Separation Re-Evaluation  
 From South of Causeway Blvd to North of Causeway Blvd  
 Hillsborough County, Florida

WPI Segment No. 440749-1

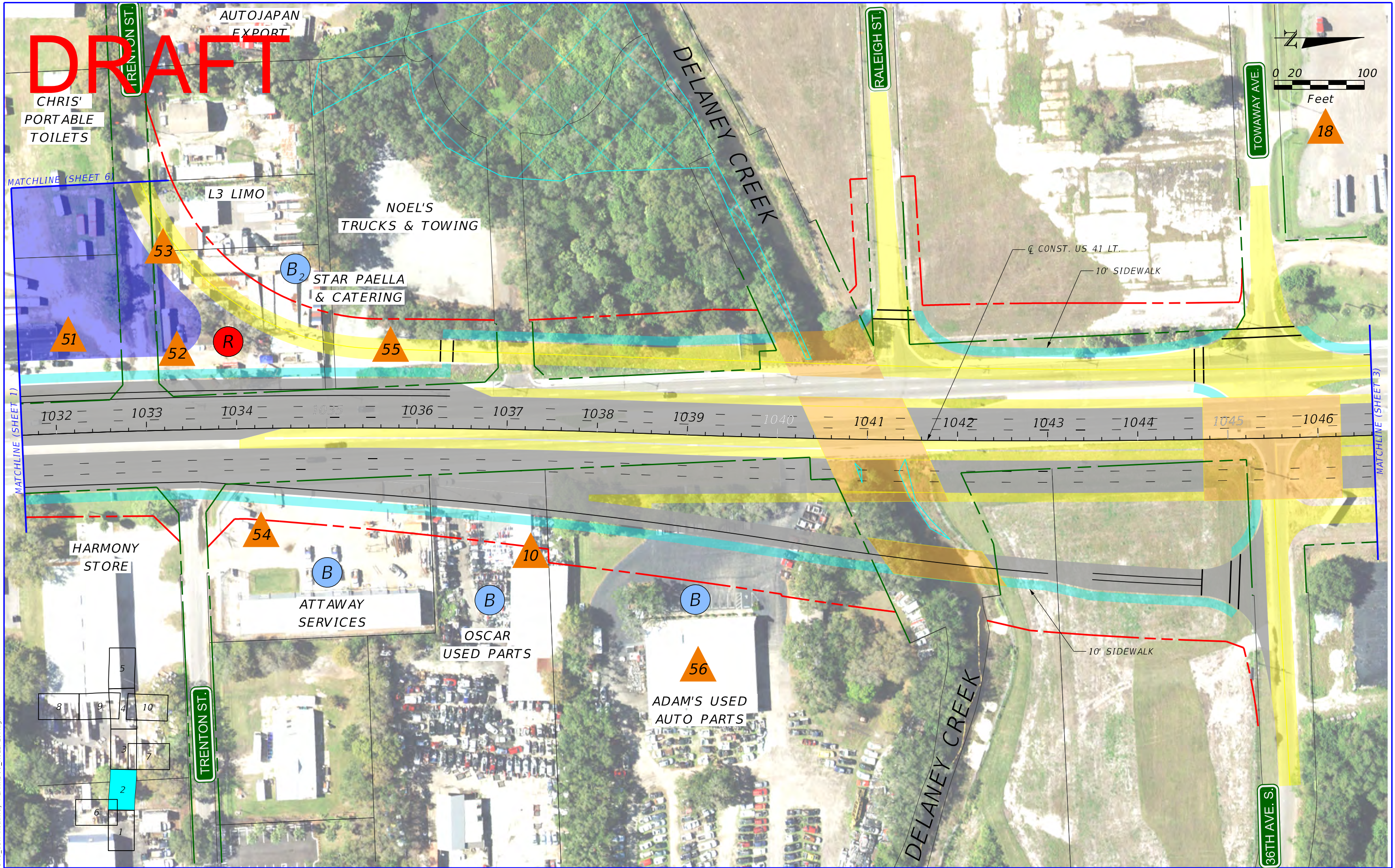
**PREFERRED ALTERNATIVE  
 CONCEPTUAL DESIGN**

SHEET NO.  
 1

5/15/2023 5:45:03 PM cparada C:\work\sets\FDOT\US41\_CSX\_Roadway\PLANNING\ROLLPLOT.dgn



# DRAFT



5/15/2023 5:47:29 PM cparada C:\work\seis\FDOT\US41\_CSX\_Roadway\PLAWR001\_ROLLPLOT.dgn

LEGEND			
	PROPOSED ASPHALT PAVEMENT		PROPOSED R/W LINE
	PROPOSED CONCRETE PAVEMENT		EXISTING R/W LINE
	PROPOSED SIDEWALK		EXISTING PARCEL LINE
	PROPOSED BRIDGE		PROPOSED BUSINESS RELOCATION
	WETLANDS		PROPOSED RESIDENTIAL RELOCATION
			POTENTIAL CONTAMINATION SITE

US 41/SR 45/South 50th St at CSX Grade Separation Re-Evaluation  
 From South of Causeway Blvd to North of Causeway Blvd  
 Hillsborough County, Florida

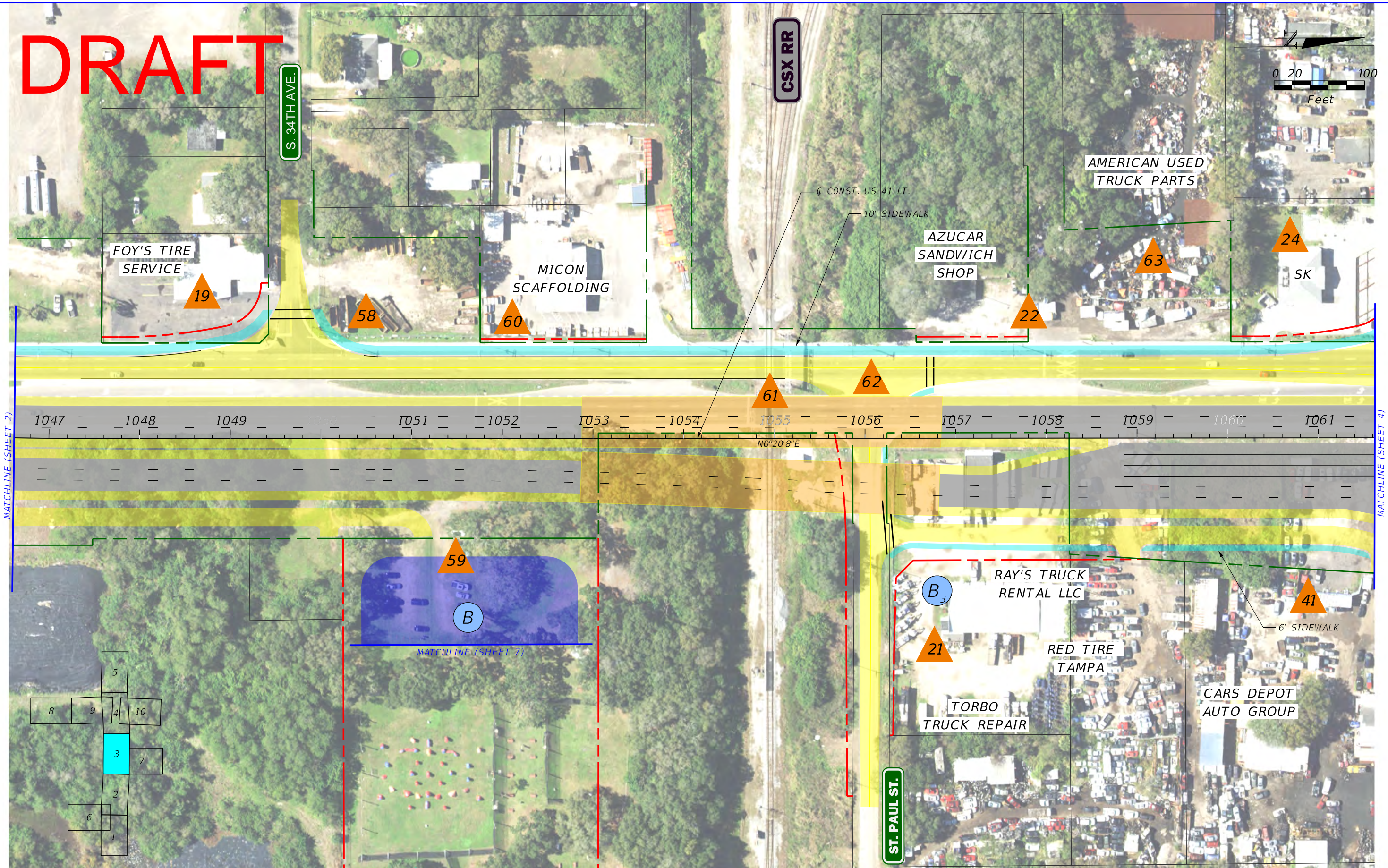
WPI Segment No. 440749-1

**PREFERRED ALTERNATIVE  
 CONCEPTUAL DESIGN**

SHEET NO.  
 2



# DRAFT



5/15/2023 5:49:48 PM cparada C:\work\sets\FDOT\US41\_CSX\_Roadway\PLAN\RD01\_ROLLPLOT.dgn

LEGEND			
	PROPOSED ASPHALT PAVEMENT		PROPOSED R/W LINE
	PROPOSED CONCRETE PAVEMENT		EXISTING R/W LINE
	PROPOSED SIDEWALK		EXISTING PARCEL LINE
	PROPOSED BRIDGE		PROPOSED BUSINESS RELOCATION
	PROPOSED POND		PROPOSED RESIDENTIAL RELOCATION
	WETLANDS		POTENTIAL CONTAMINATION SITE

US 41/SR 45/South 50th St at CSX Grade Separation Re-Evaluation  
 From South of Causeway Blvd to North of Causeway Blvd  
 Hillsborough County, Florida

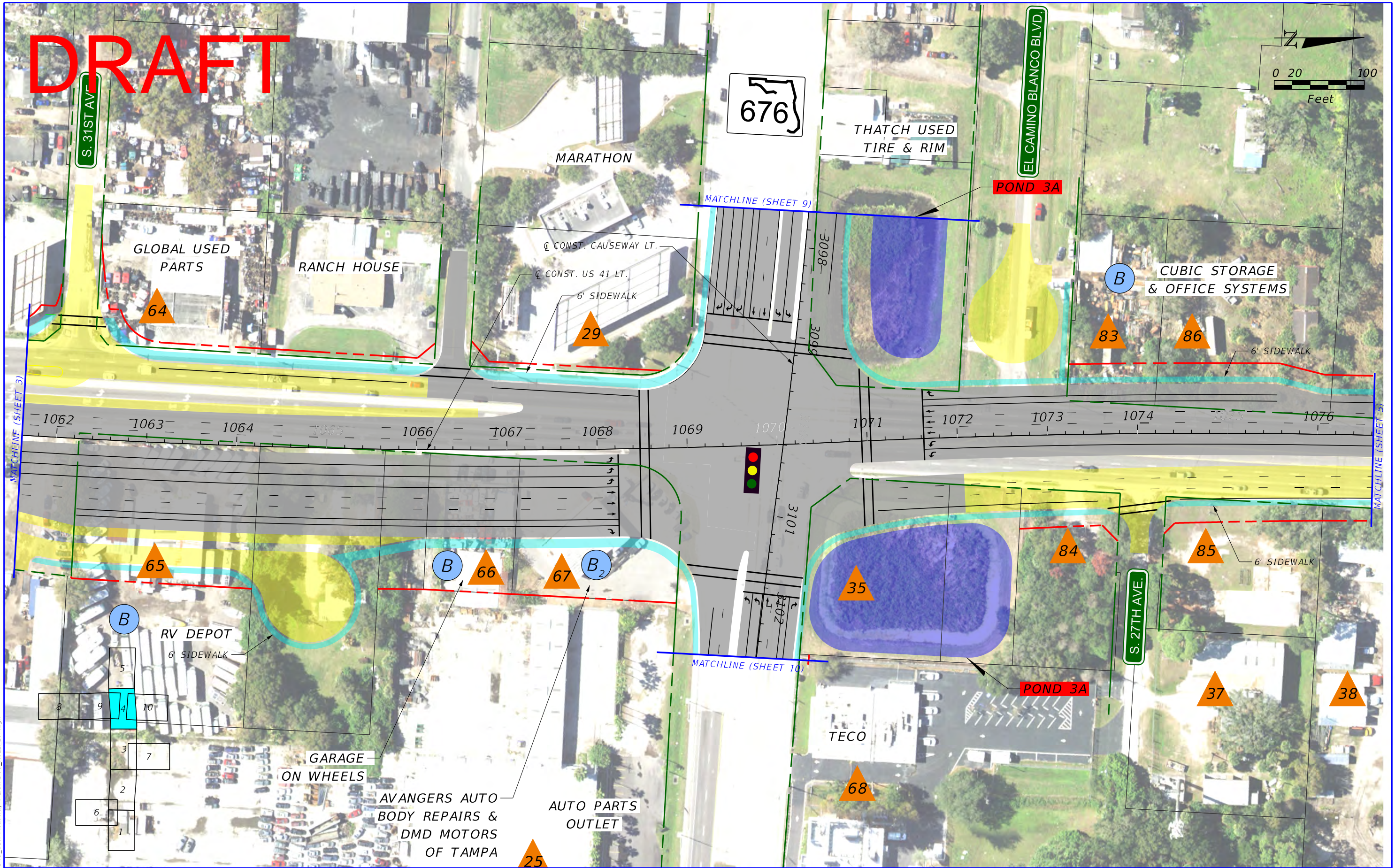
WPI Segment No. 440749-1

**PREFERRED ALTERNATIVE  
 CONCEPTUAL DESIGN**

SHEET NO.  
 3



# DRAFT



LEGEND			
	PROPOSED ASPHALT PAVEMENT		PROPOSED R/W LINE
	PROPOSED CONCRETE PAVEMENT		EXISTING R/W LINE
	PROPOSED SIDEWALK		EXISTING PARCEL LINE
	PROPOSED BRIDGE		PROPOSED BUSINESS RELOCATION
	PROPOSED POND		PROPOSED RESIDENTIAL RELOCATION
	WETLANDS		POTENTIAL CONTAMINATION SITE

US 41/SR 45/South 50th St at CSX Grade Separation Re-Evaluation  
 From South of Causeway Blvd to North of Causeway Blvd  
 Hillsborough County, Florida  
 WPI Segment No. 440749-1

**PREFERRED ALTERNATIVE  
 CONCEPTUAL DESIGN**

SHEET NO.  
 4



# DRAFT



5/15/2023 5:57:36 PM cparada C:\Work\sets\FDOT\US41\_CSX\_Roadway\PLAWRD01\_ROLLPLOT.dgn

LEGEND			
	PROPOSED ASPHALT PAVEMENT		PROPOSED R/W LINE
	PROPOSED CONCRETE PAVEMENT		EXISTING R/W LINE
	PROPOSED SIDEWALK		EXISTING PARCEL LINE
	PROPOSED BRIDGE		PROPOSED BUSINESS RELOCATION
	PROPOSED POND		PROPOSED RESIDENTIAL RELOCATION
	WETLANDS		POTENTIAL CONTAMINATION SITE

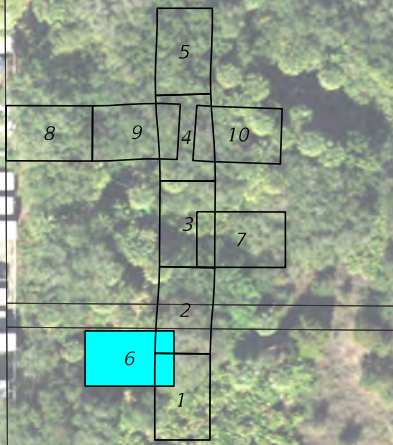
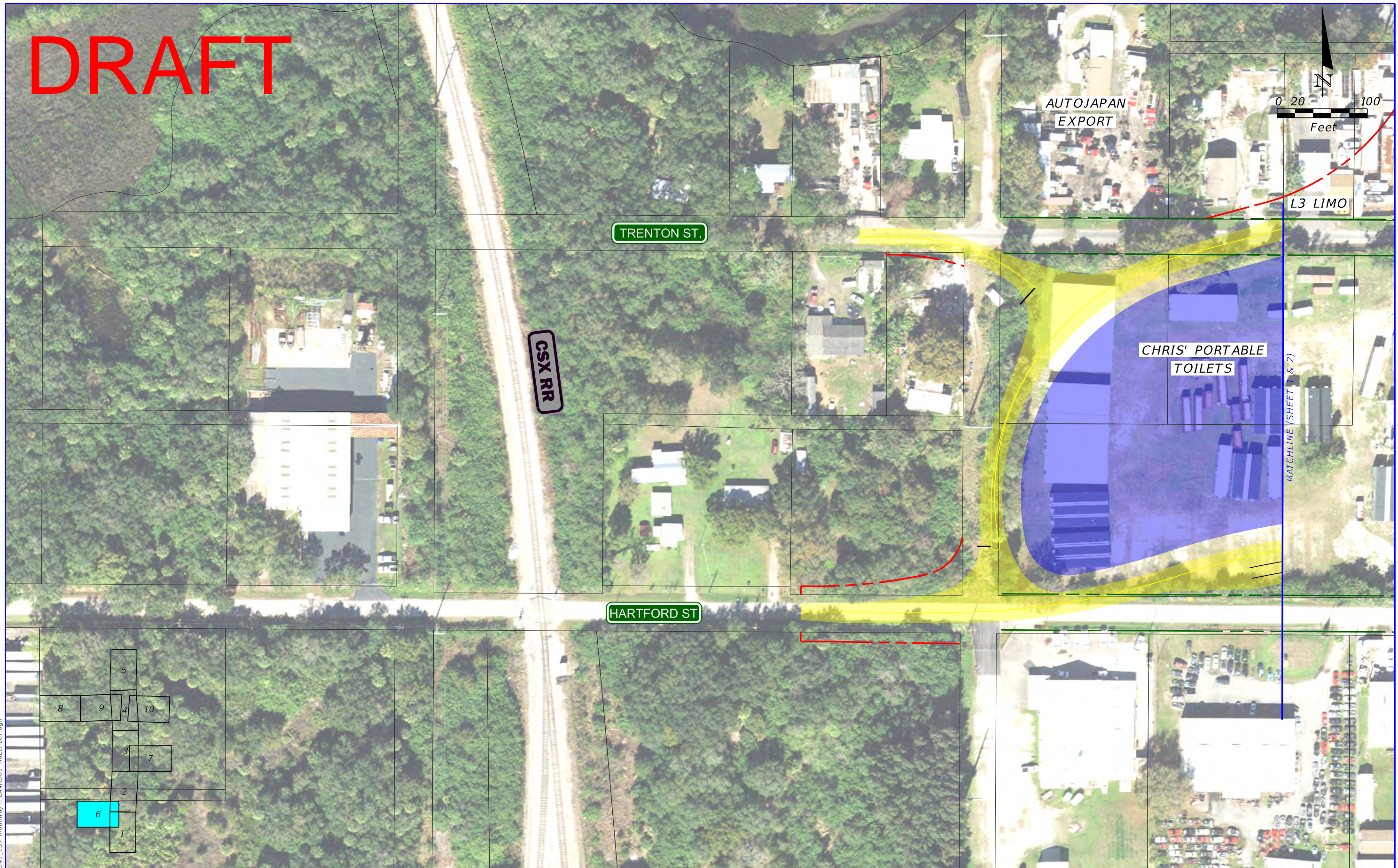
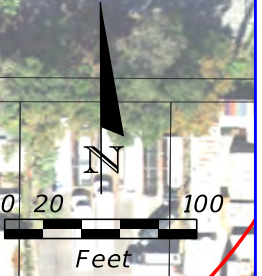
US 41/SR 45/South 50th St at CSX Grade Separation Re-Evaluation  
 From South of Causeway Blvd to North of Causeway Blvd  
 Hillsborough County, Florida  
 WPI Segment No. 440749-1

**PREFERRED ALTERNATIVE  
 CONCEPTUAL DESIGN**

SHEET NO.  
 5



# DRAFT



**LEGEND**

- PROPOSED ASPHALT PAVEMENT
- PROPOSED CONCRETE PAVEMENT
- PROPOSED SIDEWALK
- PROPOSED BRIDGE
- PROPOSED POND
- WETLANDS
- PROPOSED BUSINESS RELOCATION
- PROPOSED RESIDENTIAL RELOCATION
- PROPOSED R/W LINE
- EXISTING R/W LINE
- EXISTING PARCEL LINE
- POTENTIAL CONTAMINATION SITE

US 41/SR 45/South 50th St at CSX Grade Separation Re-Evaluation  
 From South of Causeway Blvd to North of Causeway Blvd  
 Hillsborough County, Florida

WPI Segment No. 440749-1

**PREFERRED ALTERNATIVE  
 CONCEPTUAL DESIGN**

SHEET NO.  
 6

5/15/2023 6:00:49 PM cparada C:\work\sets\FDOT\US41\_CSX\_Roadway\PLAN\RD01\_ROLLPLOT.dgn



# DRAFT

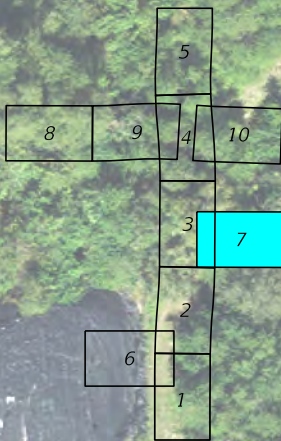
ST. PAUL ST.

CSX RR

AMERICAN  
XXII LLC

B

MATCHLINE (SHEET 3)



### LEGEND

- |                            |                                 |                              |
|----------------------------|---------------------------------|------------------------------|
| PROPOSED ASPHALT PAVEMENT  | PROPOSED POND                   | PROPOSED R/W LINE            |
| PROPOSED CONCRETE PAVEMENT | WETLANDS                        | EXISTING R/W LINE            |
| PROPOSED SIDEWALK          | PROPOSED BUSINESS RELOCATION    | EXISTING PARCEL LINE         |
| PROPOSED BRIDGE            | PROPOSED RESIDENTIAL RELOCATION | POTENTIAL CONTAMINATION SITE |

US 41/SR 45/South 50th St at CSX Grade Separation Re-Evaluation  
 From South of Causeway Blvd to North of Causeway Blvd  
 Hillsborough County, Florida

WPI Segment No. 440749-1

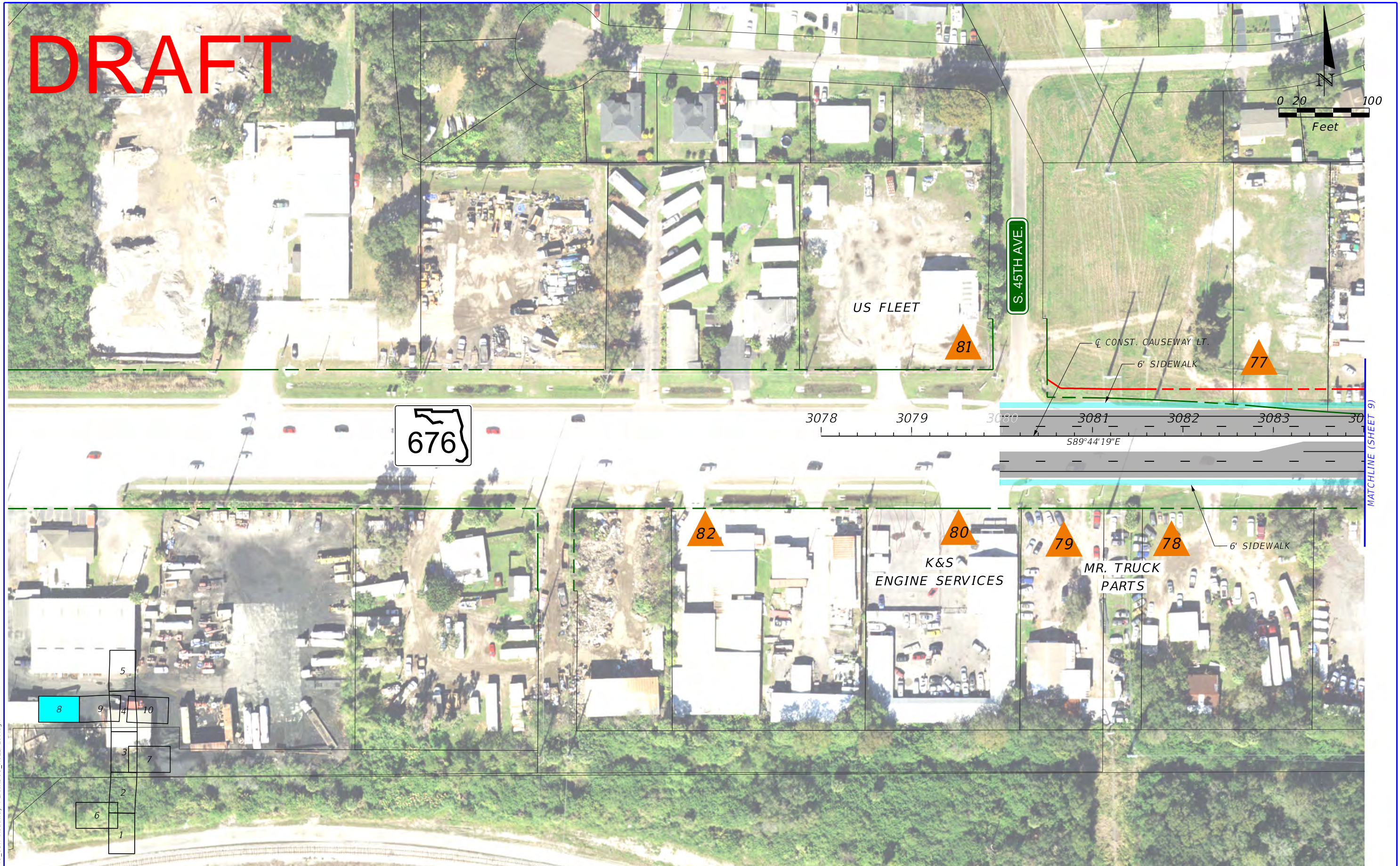
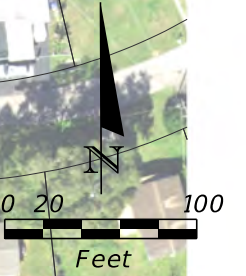
**PREFERRED ALTERNATIVE  
 CONCEPTUAL DESIGN**

SHEET NO.

7



# DRAFT

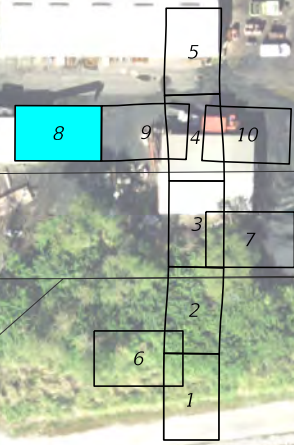


676

3078 3079 3080 3081 3082 3083 3084

589°44'19"E

MATCHLINE (SHEET 9)



**LEGEND**

- |                            |                                 |                              |
|----------------------------|---------------------------------|------------------------------|
| PROPOSED ASPHALT PAVEMENT  | PROPOSED POND                   | PROPOSED R/W LINE            |
| PROPOSED CONCRETE PAVEMENT | WETLANDS                        | EXISTING R/W LINE            |
| PROPOSED SIDEWALK          | PROPOSED BUSINESS RELOCATION    | EXISTING PARCEL LINE         |
| PROPOSED BRIDGE            | PROPOSED RESIDENTIAL RELOCATION | POTENTIAL CONTAMINATION SITE |

US 41/SR 45/South 50th St at CSX Grade Separation Re-Evaluation  
 From South of Causeway Blvd to North of Causeway Blvd  
 Hillsborough County, Florida

WPI Segment No. 440749-1

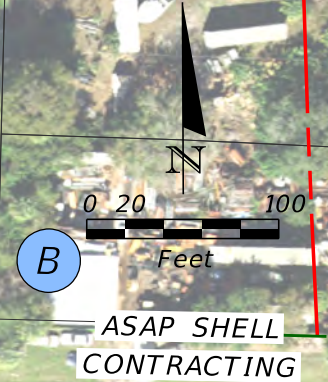
**PREFERRED ALTERNATIVE  
 CONCEPTUAL DESIGN**

SHEET NO.  
8

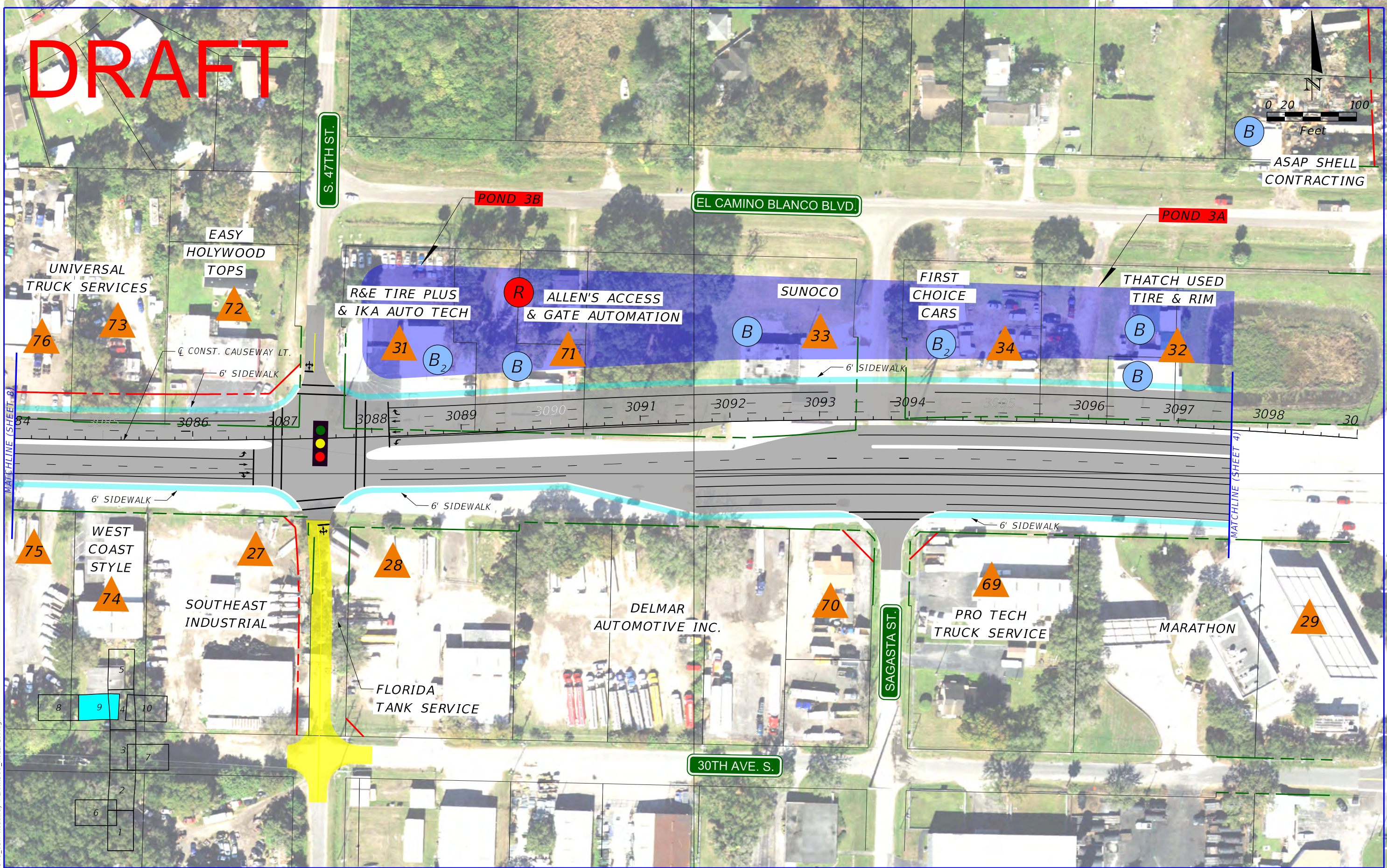
5/15/2023 6:03:57 PM cparada C:\Work\sets\FDOT\US41\_CSX\_Roadway\PLAWRD01\_ROLLPLOT.dgn



# DRAFT



ASAP SHELL  
CONTRACTING



5/15/2023 6:07:50 PM cparada C:\work\seis\FDOT\US41\_CSX\_Roadway\PLAWR001\_ROLLPLOT.dgn

LEGEND			
	PROPOSED ASPHALT PAVEMENT		PROPOSED R/W LINE
	PROPOSED CONCRETE PAVEMENT		EXISTING R/W LINE
	PROPOSED SIDEWALK		EXISTING PARCEL LINE
	PROPOSED BRIDGE		PROPOSED BUSINESS RELOCATION
	PROPOSED POND		PROPOSED RESIDENTIAL RELOCATION
	WETLANDS		POTENTIAL CONTAMINATION SITE

US 41/SR 45/South 50th St at CSX Grade Separation Re-Evaluation  
From South of Causeway Blvd to North of Causeway Blvd  
Hillsborough County, Florida

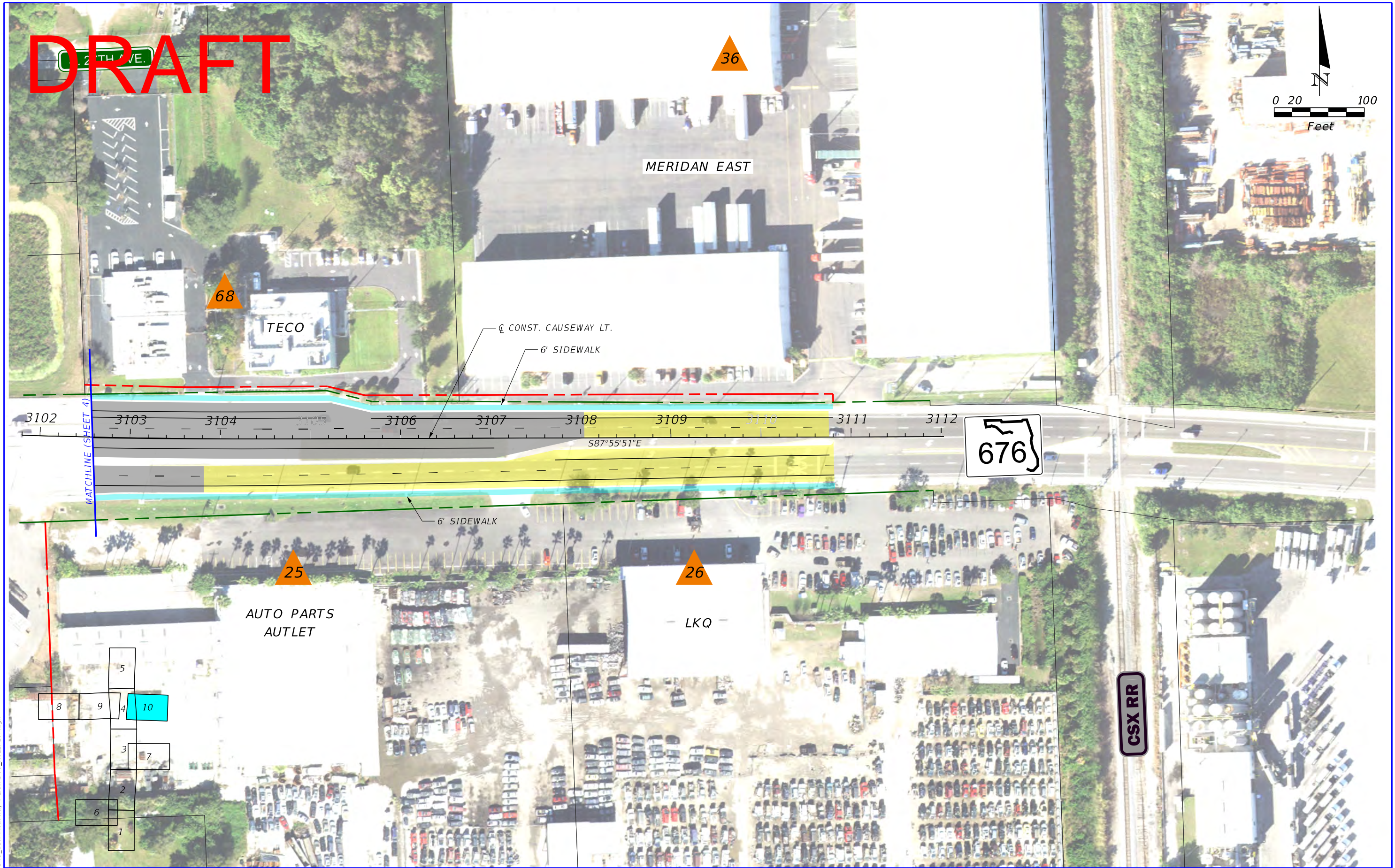
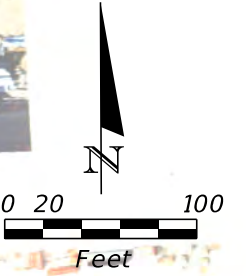
WPI Segment No. 440749-1

**PREFERRED ALTERNATIVE  
CONCEPTUAL DESIGN**

SHEET NO.  
9



# DRAFT



5/15/2023 6:15:08 PM cparada C:\work\sets\FDOT\US41\_CSX\_Roadway\PLMRD01\_ROLLPLOT.dgn

LEGEND			
	PROPOSED ASPHALT PAVEMENT		PROPOSED R/W LINE
	PROPOSED CONCRETE PAVEMENT		EXISTING R/W LINE
	PROPOSED SIDEWALK		EXISTING PARCEL LINE
	PROPOSED BRIDGE		PROPOSED BUSINESS RELOCATION
	PROPOSED POND		PROPOSED RESIDENTIAL RELOCATION
	WETLANDS		POTENTIAL CONTAMINATION SITE

US 41/SR 45/South 50th St at CSX Grade Separation Re-Evaluation  
 From South of Causeway Blvd to North of Causeway Blvd  
 Hillsborough County, Florida

WPI Segment No. 440749-1

**PREFERRED ALTERNATIVE  
 CONCEPTUAL DESIGN**

SHEET NO.  
 10