



## *Florida Department of Transportation*

**RICK SCOTT  
GOVERNOR**

11201 N. McKinley Drive  
Tampa, FL 33612

**ANANTH PRASAD, P.E.  
SECRETARY**

September 19, 2012

Ms. Lauren Milligan, Environmental Manager  
Florida State Clearinghouse  
Florida Department of Environmental Protection  
3900 Commonwealth Blvd, MS 47  
Tallahassee, FL 32399-3000

Dear Ms. Milligan:

**SUBJECT: Advance Notification  
US 41 (SR 45) PD&E Study  
from Kracker Avenue to south of SR 676 (Causeway Boulevard)  
ETDM Number: 5180  
Financial Project ID Number: 430056-1-22-01  
Hillsborough County, Florida**

The Florida Department of Transportation (FDOT) is evaluating alternative capacity and operational improvements along US Highway 41/State Road 45 (US 41/SR 45) from Kracker Avenue to south of SR 676 (Causeway Boulevard) in Hillsborough County.

We are sending this Advance Notification (AN) Package to your office for distribution to State agencies that conduct Federal consistency reviews (consistency reviewers) in accordance with the Coastal Zone Management Act and Presidential **Executive Order 12372**. We are also distributing the AN Package to local and federal agencies. Although we will request specific comments during the permitting process, we are asking that permitting and permit reviewing agencies (consistency reviewers) review the attached information and provide us with their comments.

This is a non-Federal aid action and FDOT District Seven will determine what type of environmental documentation will be necessary. The determination will be based upon selected consultant environmental evaluations and comments from other agencies. Since this project will require a federal permit, please provide a consistency review for this project in accordance with the State's Coastal Zone Management Program.

In addition, **please** review the project's consistency, to the maximum extent feasible, with the approved Comprehensive Plan of the local government to comply with **Chapter 163 of the Florida Statutes**.

FDOT District Seven is submitting this project through the Programming Screen of the Efficient Transportation Decision Making (ETDM) Environmental Screening Tool (EST) in coordination with this AN Package. The project is listed as **ETDM #5180 - US Highway 41**. Environmental Technical Advisory Team (ETAT) members should review this project on the ETDM website. Non-ETAT agencies can review this project at the public access website located at: <http://etdmpub.fl-a-etat.org/est>.

We are looking forward to receiving your comments on the project. Consistency reviewers have 45 days from the Programming Screen Notification to provide their comments. Once you have received their comments, you will supply a summary and consistency determination for your agency within 60 days of the Programming Screen Notification. If you need more review time, send a written request for an extension to our office within the initial 60 days comment period.

Your comments should be addressed to:

Ming Gao, PE  
Intermodal Systems Development Manager  
Florida Department of Transportation, District 7  
11201 N. McKinley Drive / MS 7-500  
Tampa, FL 33612-6456

Your expeditious handling of this notice will be appreciated.

Sincerely,



Ming Gao, PE  
Intermodal Systems Development Manager

MG/cs  
Attachments

ADVANCE NOTIFICATION MAILING LIST

cc:

Federal Highway Administration, Division Administrator  
Federal Highway Administration – **ETAT Representative**  
Federal Emergency Management Agency-Mitigation Division, Chief  
Federal Railroad Administration  
Federal Transit Administrator – **ETAT Representative**  
U.S. Department of the Interior-Bureau of Land Management, Eastern States Office  
U.S. Department of Housing and Urban Development, Regional Environmental Officer  
U.S. Department of the Interior-U.S. Geological Survey, Chief  
U.S. Environmental Protection Agency - **ETAT Representative**  
U.S. Department of Interior-U.S. Fish and Wildlife Service - **ETAT Representative**  
U.S. Army Corps of Engineers-Regulatory Branch - **ETAT Representative**  
U.S. Department of Commerce-National Marine Fisheries Service- Southeast  
U.S. Department of Commerce-National Marine Fisheries Service - Southeast Regional  
Superintendent Conservation Division - **ETAT Representative**  
U.S. Department of Agriculture – Southern Region  
U.S. Department of Interior – National Park Service – Southeast Regional Office – **ETAT Representative**  
Federal Aviation Administration, Airports District Office  
U.S. Department of Health and Human Services-National Center for Environmental  
Health  
U.S. Department of Interior-Bureau of Indian Affairs-Office of Trust Responsibilities  
U.S. Coast Guard – Seventh District – Commander (oan) – **ETAT Representative**  
Florida Inland Navigation District  
Poarch Band of Creek Indians of Alabama  
Muscogee (Creek) Nation of Oklahoma  
Seminole Tribe of Florida  
Miccosukee Tribe of Indians of Florida  
Seminole Nation of Oklahoma  
Florida Fish and Wildlife Conservation Commission - **ETAT Representative**  
U.S. Forest Service – **ETAT Representative**  
Florida Department of Environmental Protection - **ETAT Representative**  
Florida Department of Environmental Protection – **State Clearinghouse**  
Florida Department of State - **ETAT Representative**  
Florida Department of Economic Opportunity - **ETAT Representative**  
Florida Department of Agriculture and Consumer Services - **ETAT Representative**  
Federal Transit Administrator - **ETAT Representative**  
Tampa Bay Regional Planning Council  
Southwest Florida Water Management District - **ETAT Representative**  
FDOT Environmental Management Office, Engineer/Manager  
Local Government Officials

**Project #5180 - US HWY 41  
Programming Screen - Published on 09/19/2012  
Printed on: 9/19/2012**

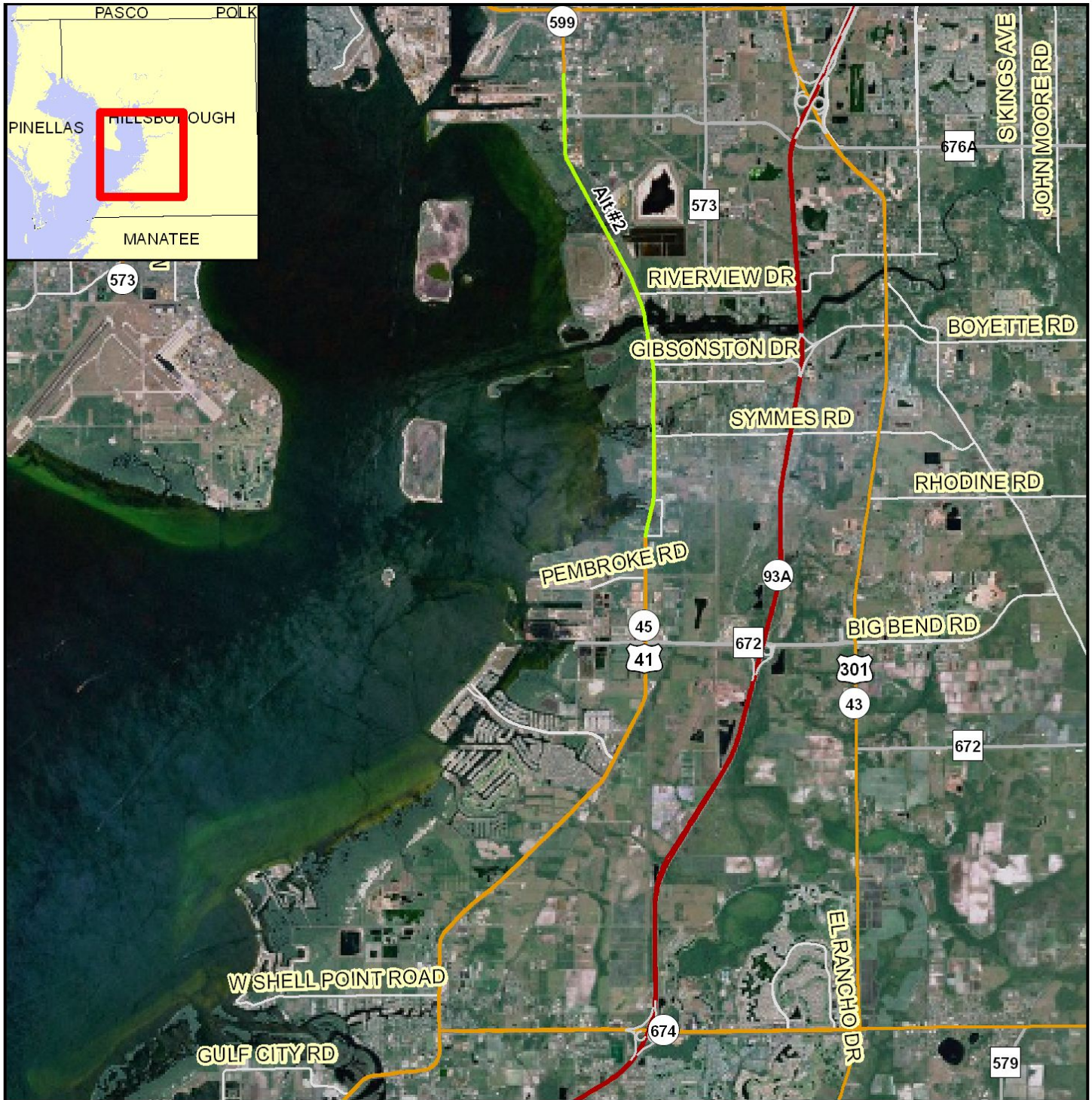
**Table of Contents**

<b>Location Maps</b> .....	<b>1</b>
<b>Fact Sheet</b> .....	<b>4</b>
<b>Disclaimer</b> .....	<b>4</b>
<b>Project Description</b> .....	<b>4</b>
<b>Community-Desired Features (No Data Available)</b> .....	<b>7</b>
<b>Purpose and Need Reviews</b> .....	<b>7</b>
<b>Environmental Information</b> .....	<b>8</b>
<b>Permits Required</b> .....	<b>20</b>
<b>Technical Studies Required</b> .....	<b>20</b>
<b>Commitments</b> .....	<b>20</b>
<b>Screening Summary Overview</b> .....	<b>20</b>
<b>Agency Comments and Summary Degrees of Effect</b> .....	<b>20</b>
<b>Alternative #1</b> .....	<b>22</b>
Project Effects Overview .....	22
Summary Degrees of Effect .....	23
<b>Resource Maps</b> .....	<b>27</b>
<b>Class of Action (No Data Available)</b> .....	<b>27</b>
<b>Dispute Resolution Activity Log (No Data Available)</b> .....	<b>27</b>
<b>Ancillary Documentation (No Data Available)</b> .....	<b>27</b>
<b>Transmittal List</b> .....	<b>27</b>
<b>Form SF-424: Application for Federal Assistance</b> .....	<b>29</b>

# Location Maps

# 5180 US HWY 41

## Kracker Avenue to South of Causeway Boulevard



0 3 Miles

**Project Aerial Map**



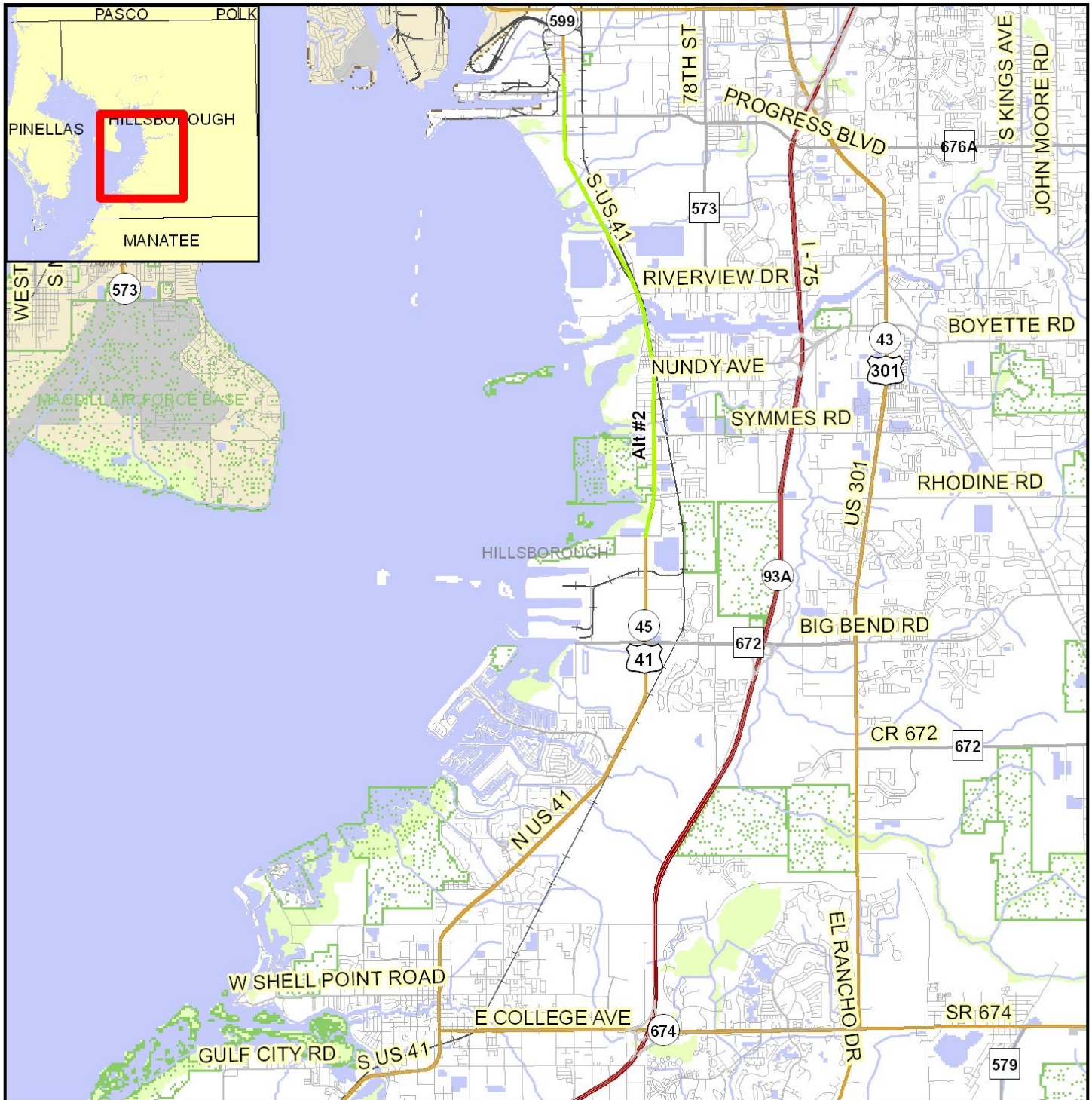
- ETDM Alternative Point
- ETDM Alternative Terminus
- ETDM Alternative Segment
- ETDM Alternative Polygon
- Primary and Limited Access Highway
- Secondary, Unlimited Access Highway
- Other Highway Feature
- Local Road

Data Sources:  
 Highways - NAVTEQ  
 Digital Orthophotograph - US Geological Survey

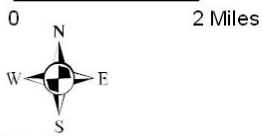
This map and its content is made available by the Florida Department of Transportation on an "as is," "as available" basis without warranties of any kind, express or implied.



# 5180 US HWY 41 Kracker Avenue to South of Causeway Boulevard



**Project Location Map**



Data Sources:  
 NAVTEQ  
 US Geological Survey  
 US Census Bureau  
 County Property Appraisers  
 Florida Natural Areas Inventory

- |   |  |   |
|---|--|---|
| <span style="color: green;">●</span> ETDM Alternative Point   | <span style="border: 1px dashed green; display: inline-block; width: 15px; height: 10px;"></span> Managed Conservation Lands | <span style="border-bottom: 2px solid green; width: 20px; display: inline-block;"></span> Toll Road               |
| <span style="color: magenta;">●</span> ETDM Alternative Terminus  | <span style="border-bottom: 2px solid blue; width: 20px; display: inline-block;"></span> River, Stream or Canal              | <span style="border-bottom: 2px solid grey; width: 20px; display: inline-block;"></span> Railroad                 |
| <span style="border: 2px solid green; width: 20px; height: 10px; display: inline-block;"></span> ETDM Alternative Polygon | <span style="background-color: lightblue; width: 20px; height: 10px; display: inline-block;"></span> Water Body              | <span style="border: 1px solid grey; width: 20px; height: 10px; display: inline-block;"></span> Airport           |
| <span style="border-bottom: 2px solid blue; width: 20px; display: inline-block;"></span> River, Stream or Canal           | <span style="background-color: lightgreen; width: 20px; height: 10px; display: inline-block;"></span> Swamp/Marsh            | <span style="border: 1px solid grey; width: 20px; height: 10px; display: inline-block;"></span> City Limits       |
| <span style="background-color: lightblue; width: 20px; height: 10px; display: inline-block;"></span> Water Body           |  | <span style="border: 1px solid grey; width: 20px; height: 10px; display: inline-block;"></span> County Boundaries |

This map and its content is made available by the Florida Department of Transportation on an "as is." "as available" basis without warranties of any kind, express or implied.



DISCLAIMER: The Fact Sheet data consists of the most up-to-date information available at the time the Advance Notification Package is published. Updates to this information may be found on the ETDM website at <http://etdmpub.flia-etat.org>

**Special Note:** Please be aware of the selected Milestone date when viewing project data on the ETDM website. Snapshots of project and analysis data have been taken for Project #5180 at various points throughout the project's life-cycle. On the website these **Project Milestone Dates** are listed in the the project header immediately after the project contact information. Click on any of the dates listed to view the information available on that date.

## Project Description

### Purpose of and Need for

#### Purpose and Need Statement

##### Purpose and Need Statement

The purpose of the proposed project is to accommodate existing and future traffic demands on US 41 due to growth within the project limits and surrounding areas. US 41 is part of the Florida Intrastate Highway System (FIHS) and plays a significant role in connecting southern Hillsborough County to the Tampa Bay region.

##### Need

The need for this project stems from projected future traffic, which shows the level of service (LOS) deficiencies in this Corridor. This corridor is projected to operate at LOS F with the 2035 traffic.

##### Regional Connectivity

US 41 is a major north-south regional arterial that parallels I-75 and US 301 and connects south Hillsborough County to the Tampa Bay region. It provides connectivity between the communities of Apollo Beach, Riverview, and Gibsonton.

US 41 is part of the FIHS, which is the highway component of the Strategic Intermodal System (SIS), a statewide network of highways, railways, waterways, and transportation hubs that handle the bulk of Florida's passenger and freight traffic. US 41 is part of the regional roadway network identified by the West Central Florida Metropolitan Planning Organization's (MPO's) Chairs Coordinating Committee (CCC).

##### Safety

With the additional capacity provided in the corridor by the widening of US 41 from four to six lanes, roadway congestion will be reduced, which will decrease potential conflicts with other vehicles and potentially increase safety.

Crash data was analyzed for a 5-year period from 2006 to 2010. During this 5-year period, 803 crashes occurred along the study corridor involving 11 fatal crashes and 151 injury crashes. In 2006 there were five fatal crashes, in 2008 there were three fatal crashes, and in 2007, 2009, and 2010 there was one fatal crash each. The actual crash rates per million vehicle miles for this study corridor from the Florida Department of Highway Safety and Motor Vehicles are shown for 2006 through 2010, together with the statewide average for similar facility types. This information can be reviewed in Table 1 found in the Project Attachments.

As shown in Table 1, five spots and one segment that were analyzed had higher average actual crash rates than the statewide average crash rate. The spots that exceeded the statewide average crash rate are: US 41 and Riverview Drive; US 41 and Madison Avenue/Pendola Point Road; US 41 and Gibsonton Drive; US 41 and Palm Avenue; and US 41 and Symmes Road. The average actual crash rates were 4.88 and 3.25 times higher than the statewide average crash rate, respectively. The segment that exceeded the statewide average crash rate is from Port Sutton Road to Causeway Boulevard. This segment has a crash rate that is 13% higher than the statewide average crash rate.

##### Plan Consistency

This project is consistent with the Future of Hillsborough Transportation Element, which is the Comprehensive Plan for Unincorporated Hillsborough County. The plan was originally adopted in July 1989 and last amended in June of 2008. The comprehensive plan and the Hillsborough County 2035 LRTP, adopted in December 2009, both indicate the need to improve US 41 to 6-lanes from 19th Avenue NE to Madison Avenue.

The project identified in the Hillsborough County 2035 LRTP, as part of the Cost Affordable Highway, Bicycle, and Pedestrian Projects is the widening of US 41 between 19th Avenue NE and Madison Avenue. The project overlaps with the boundaries of US 41 from Kracker Avenue to south of Causeway Boulevard for approximately 6.2 miles. US 41 between 19th Avenue NE and Madison Avenue is listed in the LRTP as expected to be constructed after 2035 as the project is funded for design but unfunded for right-of-way and construction in the LRTP. The remaining portion of the corridor, from Madison Avenue to Causeway Boulevard is not listed in the LRTP.

The West Central Florida MPO Chair's Coordinating Committee (CCC) has classified US 41 as a "regional road" and as an "unfunded need" on the "regionally significant road network" in west central Florida.

##### Emergency Evacuation

US 41 is listed as an evacuation route by the Hillsborough County Emergency Management and shown on the Florida Division of Emergency Management's evacuation route network. US 41 provides access to I-275 and I-75 via connection with many east-west roads.

##### Future Population and Employment Growth in Corridor

Traffic in the corridor is expected to increase due to projected population and employment growth along the corridor. According to the Hillsborough County 2035 LRTP, Hillsborough County population is expected to grow from 1,173,360 to 1,729,300 (47% increase) between 2006 and 2035, and employment is expected to grow from 759,300 to 1,175,920 (55% increase) within this timeframe.

##### Current and Future Transportation Demand

In 2011, the Annual Average Daily Traffic (AADT) ranged between 24,000 (Level of Service [LOS] B) and 34,500 (LOS C) within the proposed project area (as shown in Table 2) according to the Hillsborough County March 2011 Level of Service Report. With an AADT of 34,500, US 41 is at 94% capacity for the adopted level of service standard of D (LOS D has a capacity of 36,700). The current Tampa Bay Regional Planning Model



(TBRPM) - Version 7.0 indicates that the AADTs in 2035 are expected to range between 51,500 and 73,000. The existing four lane configuration would result in a LOS F with the future traffic volume.

**Modal Interrelationships**

The Hillsborough Area Regional Transit (HART) Authority operates local route 31 within the corridor. Bicycle and pedestrian accommodations will be considered as part of the proposed improvements.

US 41 is part of the highway network that provides access to regional intermodal facilities such as the Port of Tampa and Port Manatee. US 41 is designated as part of the Florida's SIS highways. Improvements to US 41 will enhance access to activity centers in the area and will improve movement for goods and freight in the Tampa Bay region and across the State. The widening of this facility is also intended to provide relief to parallel facilities such as I-75 and US 301.

**Project Description**

**Project Description Summary**

The Florida Department of Transportation (FDOT), District Seven, is conducting a Project Development and Environment (PD&E) study to evaluate alternative capacity and operational improvements along US Highway 41/State Road 45 (US 41/SR 45) from Kracker Avenue to south of SR 676 (Causeway Boulevard) in Hillsborough County, FL. US 41 is a major north-south regional arterial that parallels Interstate 75 (I-75) and US Highway 301 (US 301) within the southern portions of Hillsborough County.

US 41 is classified as an urban principal arterial - other. The proposed project consists of the widening of US 41 from a four-lane divided arterial to a six-lane divided arterial and the anticipated replacement of the existing US 41 bridges (Bridge Nos. 100045 and 100107) over the Alafia River. The proposed project is intended to accommodate projected future traffic. Multi-modal improvements such as sidewalks, bicycle facilities, and transit accommodations will be considered as part of the project. The length of the proposed project is approximately 7.7 miles.

**Project Status**

Portions of US 41, within the project limits, have previously been screened through the Environmental Screening Tool (EST). A Planning Screen Summary Report was published on June 9, 2005 under Efficient Transportation Decision Making (ETDM) Project number 5180 - US 41 from SR 674 (College Avenue) to Madison Avenue. A Programming Screen Summary Report was published on November 18, 2008, under ETDM Project number 9511. The ETAT reviewed limits of US 41 from 19th Avenue NE to Gibsonton Drive, but after the ETAT review was complete the limits were reduced to be from 12th Street to Kracker Avenue. The FDOT based their Programming Summary Report and Class of Action on these new reduced limits. The current project is using the same ETDM Project Number 5180 as the Planning Screen, but the limits have been reduced to connect to the southern segment along US 41 that was evaluated in the Programming Screen (ETDM Project number 9511).

The project is currently state-funded for PD&E for \$1,116,000. This project is not listed on the Hillsborough County Long Range Transportation Plan (LRTP) for construction until after 2035. FDOT will coordinate with the local planning agencies for inclusion on the 2035 LRTP, and costs for construction and right of way will be determined at that time.

This project will be evaluated as a State Environmental Impact Report (SEIR). The project will consist of three segments: (1) Kracker Avenue to Pennsylvania Avenue, (2) Pennsylvania Avenue to Industrial Access Road - bridge over Alafia River, and (3) Industrial Access Road to south of SR 676 (Causeway Boulevard). Segment 2, which includes the bridge over the Alafia River, will require review from the U.S. Coast Guard. The project can be reviewed in the EST by segment or as the entire project limits.

**Summary of Public Comments not available at this time**

**Justification:**

No public comments have been received to date on this project. A Public Involvement Plan will be produced in PD&E and a Public Hearing will be held to gather public input.

**Planning Consistency Status**

No information available.

**Potential Lead Agencies**

- FL Department of Transportation

**Exempted Agencies**

Agency Name	Justification	Date
US Forest Service	No forest service lands.	09/18/2012
National Park Service	No national parks within project area.	09/18/2012
Federal Transit Administration	FTA has requested to be exempt from reviewing any non-transit projects.	06/29/2012

**Project Attachments**

Date	Type	Size	Link / Description
09/19/2012	Form SF-424: Application for Federal Assistance	631 KB	<a href="http://etdmpub.fla-etat.org/est/servlet/blobViewer?blobID=13253">http://etdmpub.fla-etat.org/est/servlet/blobViewer?blobID=13253</a> Form SF-424: Application for Federal Assistance
09/19/2012	Hardcopy Map (from Attach Document Tool)	1.96 MB	<a href="http://etdmpub.fla-etat.org/est/servlet/blobViewer?blobID=13247">http://etdmpub.fla-etat.org/est/servlet/blobViewer?blobID=13247</a> Project Map: Map of Project Segments
09/13/2012	Traffic Analysis	92 KB	<a href="http://etdmpub.fla-etat.org/est/servlet/blobViewer?blobID=13230">http://etdmpub.fla-etat.org/est/servlet/blobViewer?blobID=13230</a> Crash and Traffic Data Tables

**Alternative #2 - US 41-Kracker to s/o Causeway**

Alternative Description			
<b>From:</b>	Kracker Ave	<b>To:</b>	South of Causeway Boulevard
<b>Type:</b>	Widening	<b>Status:</b>	ETDM QA/QC
<b>Total Length:</b>	6.84 mi.	<b>Cost:</b>	\$1,116,000.00
<b>Modes:</b>	Roadway Bicycle Pedestrian	<b>SIS:</b>	Y

**Segment Description(s)**

**Location and Length**

Segment No.	Name	Beginning Location	Ending Location	Length (mi.)	Roadway Id	BMP	EMP
S-001: Segment 1 - South of Alafia	US Hwy 41	Kracker Ave	Pennsylvania Ave	2.84			
S-003: Segment 3 - North of Alafia	US Hwy 41	Riverview Dr	Denver St	3.35			
S-002: Segment 2 - Alafia Bridge	US Hwy 41	Pennsylvania Ave	Riverview Dr	0.63			

**Jurisdiction and Class**

Segment No.	Jurisdiction	Urban Service Area	Functional Class
S-001: Segment 1 - South of Alafia	FDOT	In	URBAN: Principal Arterial - Other
S-003: Segment 3 - North of Alafia	FDOT	In	URBAN: Principal Arterial - Other
S-002: Segment 2 - Alafia Bridge	FDOT	In	URBAN: Principal Arterial - Other

**Base Conditions**

Segment No.	Year	AADT	Lanes	Config
S-001: Segment 1 - South of Alafia	2011	24000	4	Lanes Divided
S-003: Segment 3 - North of Alafia	2011	34500	4	Lanes Divided
S-002: Segment 2 - Alafia Bridge	2011	24000	4	Lanes Divided

**Interim Plan**

Segment No.	Year	AADT	Lanes	Config
S-001: Segment 1 - South of Alafia				
S-003: Segment 3 - North of Alafia				
S-002: Segment 2 - Alafia Bridge				

**Needs Plan**

Segment No.	Year	AADT	Lanes	Config
S-001: Segment 1 - South of Alafia	2035	51700	6	Lanes Divided
S-003: Segment 3 - North of Alafia	2035	73500	6	Lanes Divided
S-002: Segment 2 - Alafia Bridge	2035	54000	6	Lanes Divided

**Cost Feasible Plan**

Segment No.	Year	AADT	Lanes	Config
S-001: Segment 1 - South of Alafia	2035			
S-003: Segment 3 - North of Alafia	2035			
S-002: Segment 2 - Alafia Bridge	2035			

**Funding Sources**

Segment No.	FDOT	Unknown
S-001: Segment 1 - South of Alafia	\$1,116,000.00	
S-003: Segment 3 - North of Alafia	\$1,116,000.00	
S-002: Segment 2 - Alafia Bridge	\$1,116,000.00	

**Eliminated Alternatives**

**Alternative #1 - Eliminated**

- **Date Updated:** 07/11/2012
- **Updated By:** FDOT District 7
- **Justification for Elimination:**

Alternative 1 is being eliminated because the limits have been modified since the Planning Screen. Alternative 1 is from SR 674 to Madison Avenue. This stretch of US 41 has been segmented and evaluated as follows:  
 -The portion from SR 674 to 12th Street is no longer being considered for further review at this time because it is a constrained corridor.  
 -The portion from 12th Street to Kracker Road has already had a Programming Screen (ETDM #9511) and State Environmental Impact Report (SEIR) completed in an effort to support Port of Tampa development and Developer projects planned for the area.  
 -The portion from Kracker Road to Causeway Boulevard are the new limits to be evaluated in the current Programming Screen (ETDM #5180).

## Community-Desired Features

No Data Available

## Purpose and Need Reviews

### FL Department of Environmental Protection

**Acknowledgment:** Understood  
**Review Date:** 04/14/2005  
**Comments:** No Purpose and Need comments were found.

### FL Department of State

**Acknowledgment:** Understood  
**Review Date:** 04/15/2005  
**Comments:** Will additional Right-of-Way be required for this project or will all construction happen within existing Right-of-Way?

### Federal Highway Administration

**Acknowledgment:** Accepted  
**Review Date:** 04/12/2005  
**Comments:** No Purpose and Need comments were found.

### National Marine Fisheries Service

**Acknowledgment:** Understood  
**Review Date:** 04/11/2005  
**Comments:** No Purpose and Need comments were found.

### Southwest Florida Water Management District

**Acknowledgment:** Understood  
**Review Date:** 04/05/2005  
**Comments:** No Purpose and Need comments were found.

### US Army Corps of Engineers

**Acknowledgment:** Understood  
**Review Date:** 04/13/2005  
**Comments:** No Purpose and Need comments were found.

### US Coast Guard

**Acknowledgment:** Accepted  
**Review Date:** 04/14/2005  
**Comments:** No Purpose and Need comments were found.

### US Environmental Protection Agency

**Acknowledgment:** Understood  
**Review Date:** 04/15/2005  
**Comments:** No Purpose and Need comments were found.

### US Fish and Wildlife Service

**Acknowledgment:** Understood  
**Review Date:** 04/14/2005  
**Comments:** No Purpose and Need comments were found.

### The following organizations were notified but did not submit a review of the Purpose and Need:

- Not Available. Contact the ETDM Help Desk for assistance.

## Environmental Information

The following tables show results of standard data analyses that compare the locations of the project alternatives with locations of various environmental resources, as recorded in the ETDM Geographic Information System database. This report provides results for various resources within 500 feet from the center of the planned corridor. Results for additional types of resources and buffer distances may be viewed on the ETDM Environmental Screening Tool web site, or may be requested from the project contact as indicated on the Advance Notification cover letter. Public access to the ETDM Environmental Screening Tool is provided by the Florida Department of Transportation at the following web address: <http://etdmpub.fl.a-etat.org>

### Coastal Zone Consistency Review Is Required?

YES

### Potential Navigable Waterway Crossing Features Found?

NO

### Alternative #2 - US 41-Kracker to s/o Causeway Summary

Analysis Type	Date Run	0 ft.	500 ft.		1320 ft.	
		Count	Count	Acres	Count	Acres
<b>Land Uses</b>						
District 7 Generalized Landuse	Not Analyzed	Not Analyzed	Not Analyzed		Not Analyzed	
<b>Wetlands</b>						
National Wetlands Inventory	09/18/2012	Not Analyzed	39	134.24	Not Analyzed	
SWFWMD Wetlands 2008	Not Analyzed	Not Analyzed	Not Analyzed		Not Analyzed	
SWFWMD Wetlands 2009	09/18/2012	Not Analyzed	43	114.71	Not Analyzed	
<b>Floodplains</b>						
DFIRM Flood Hazard Zones	09/18/2012	Not Analyzed	7	847.12	Not Analyzed	
FEMA Flood Insurance Rate Maps 1996	09/18/2012	Not Analyzed	11	847.12	Not Analyzed	
<b>Wildlife and Habitat</b>						
2003 FFWCC Habitat and Landcover GRID	09/18/2012	Not Analyzed	N/A	847.12	Not Analyzed	
2008 SWFWMD FL Land Use and Land Cover	Not Analyzed	Not Analyzed	Not Analyzed		Not Analyzed	
2009 SWFWMD FL Land Use and Land Cover	09/18/2012	Not Analyzed	113	847.12	Not Analyzed	
Florida Managed Areas	09/19/2012	Not Analyzed	1	4.01	Not Analyzed	
Florida Natural Areas Inventory Managed Lands	Not Analyzed	Not Analyzed	Not Analyzed		Not Analyzed	
Strategic Habitat and Conservation Areas 2000	Not Analyzed	Not Analyzed	Not Analyzed		Not Analyzed	
<b>Outstanding Florida Waters</b>						
Other Outstanding Florida Waters	09/18/2012	Not Analyzed	0	0.0	Not Analyzed	
<b>Aquatic Preserves</b>						
List of Aquatic Preserves	09/18/2012	Not Analyzed	0	0.0	Not Analyzed	
<b>Cultural Resources</b>						
Field Survey Project Boundaries	09/18/2012	Not Analyzed	12	137.72	Not Analyzed	
Florida Site File Cemeteries	09/18/2012	Not Analyzed	0	0.0	Not Analyzed	
Florida Site File Historic Bridges	09/18/2012	Not Analyzed	1	0.0	Not Analyzed	
Florida Site File Historic Standing Structures	09/18/2012	Not Analyzed	18	0.0	Not Analyzed	
Resource Groups	09/18/2012	Not Analyzed	1	29.99	Not Analyzed	
<b>Coastal Barrier Resources</b>						
Coastal Barrier Resource System	09/18/2012	Not Analyzed	0	0.0	Not Analyzed	

Contamination					
Brownfield Location Boundaries	09/19/2012	Not Analyzed	2	16.52	Not Analyzed
FDEP Off Site Contamination Notices	09/18/2012	Not Analyzed	0	0.0	Not Analyzed
National Priority List Sites	09/18/2012	Not Analyzed	0	0.0	Not Analyzed
Solid Waste Facilities	09/18/2012	Not Analyzed	2	0.0	Not Analyzed
Superfund Hazardous Waste Sites	09/19/2012	Not Analyzed	0	0.0	Not Analyzed
Toxic Release Inventory Sites	09/19/2012	Not Analyzed	1	0.0	Not Analyzed
Sole Source Aquifer					
Sole Source Aquifers	09/18/2012	Not Analyzed	0	0.0	Not Analyzed
Noise Sensitive Facilities					
Geocoded Health Care Facilities	09/18/2012	Not Analyzed	0	0.0	Not Analyzed
Geocoded Laser Facilities	09/18/2012	Not Analyzed	0	0.0	Not Analyzed
Geocoded Schools	09/19/2012	Not Analyzed	0	0.0	Not Analyzed
Essential Fish Habitat Potential					
Environmentally Sensitive Shorelines	09/18/2012	Not Analyzed	46	0.0	Not Analyzed
Florida Artificial Reefs	09/18/2012	Not Analyzed	0	0.0	Not Analyzed
Florida Reef Locations and Names	09/18/2012	Not Analyzed	0	0.0	Not Analyzed
Florida Sea Grass Bed Scar Damage	09/18/2012	Not Analyzed	0	0.0	Not Analyzed
Mangroves	09/18/2012	Not Analyzed	7	28.37	Not Analyzed
Seagrass Beds (Showing Continuous/Discontinuous)	09/18/2012	Not Analyzed	0	0.0	Not Analyzed
Submerged Lands Act	09/18/2012	Not Analyzed	1	1.06	Not Analyzed
Farmlands					
Generalized Agricultural Land Use	09/18/2012	Not Analyzed	0	0.0	Not Analyzed
Prime Farm Land	09/18/2012	Not Analyzed	21	466.61	Not Analyzed
Communities					
2000 Census Block Data	09/18/2012	Not Analyzed	112	847.12	Not Analyzed
2000 Census data Block Groups - Indicators	09/18/2012	Not Analyzed	8	847.12	Not Analyzed
2010 American Community Survey Block Group Data - Income	Not Analyzed	Not Analyzed	Not Analyzed	Not Analyzed	Not Analyzed
2010 American Community Survey Block Group Data - Language	Not Analyzed	Not Analyzed	Not Analyzed	Not Analyzed	Not Analyzed
2010 American Community Survey Block Group Data - Vehicles	Not Analyzed	Not Analyzed	Not Analyzed	Not Analyzed	Not Analyzed
2010 US Census Block Data	Not Analyzed	Not Analyzed	Not Analyzed	Not Analyzed	Not Analyzed
County Demographics - 2000 Census	09/18/2012	Not Analyzed	1	846.14	Not Analyzed
Recreation Areas					
Existing Recreational Trails 2005	09/19/2012	Not Analyzed	5	0.0	Not Analyzed
Florida State Parks	09/18/2012	Not Analyzed	0	0.0	Not Analyzed
Geocoded Parks	09/18/2012	Not Analyzed	2	0.0	Not Analyzed
Parcel Derived Parks	09/18/2012	Not Analyzed	0	0.0	Not Analyzed
Wild and Scenic Rivers					
Wild and Scenic Rivers	09/18/2012	Not Analyzed	Not Analyzed	Not Analyzed	0
					0.0
Navigable Waterway Crossing?					

Potential Navigable Waterway Crossings	09/18/2012	0	Not Analyzed	Not Analyzed
--	------------	---	--------------	--------------

**National Wetlands Inventory** [metadata](#)  
*Wetland areas from the National Wetlands Inventory summarized by wetland system type.*  
**Alternative #2, analyzed on 9/18/2012.** [summary](#)

System	100 Ft.		200 Ft.		500 Ft.	
	Acr	Pct	Acr	Pct	Acr	Pct
ESTUARINE	4.8	2.9%	18.8	5.62%	94.0	11.09%
LACUSTRINE	0.3	0.16%	1.8	0.55%	14.1	1.67%
PALUSTRINE	0.6	0.36%	5.8	1.74%	26.2	3.09%

**DFIRM Flood Hazard Zones** [metadata](#)  
*Flood Hazard Zones Of The Digital Flood Insurance Rate Map (DFIRM).*  
**Alternative #2, analyzed on 9/18/2012.** [summary](#)

Flood Zone	100 Ft.		200 Ft.		500 Ft.		5280 Ft.	
	Acr	Pct	Acr	Pct	Acr	Pct	Acr	Pct
0.2 PCT ANNUAL CHANCE FLOOD HAZARD	0	0	0	0	1.0	0.12%	163.8	1.52%
AE	166.5	100%	334.5	100%	846.1	99.88%	7579.0	70.42%

**FEMA Flood Insurance Rate Maps 1996** [metadata](#)  
*FEMA Flood Insurance Rate Maps 1996 summarized by zone. See metadata for descriptions of zones.*  
**Alternative #2, analyzed on 9/18/2012.** [summary](#)

Zone	100 Ft.		200 Ft.		500 Ft.		5280 Ft.	
	Acr	Pct	Acr	Pct	Acr	Pct	Acr	Pct
AE	166.5	100%	334.5	100%	845.8	99.84%	7567.1	70.31%
X500	0	0	0	0	1.3	0.16%	1091.0	10.14%

**2003 FFWCC Habitat and Landcover GRID**

2003 Habitat and Landcover Grid from the Florida Fish and Wildlife Conservation Commission summarized by type. Data is currently not displayed in maps.

Alternative #2, analyzed on 9/18/2012.

[metadata](#)

[summary](#)

Description	100 Ft.		200 Ft.		500 Ft.		5280 Ft.	
	Acr	Pct	Acr	Pct	Acr	Pct	Acr	Pct
BARE SOIL - CLEARCUT	1.8	1.06%	4.0	1.18%	6.7	0.79%	140.1	1.30%
CYPRESS SWAMP	0	0	0.4	0.13%	4.4	0.52%	29.6	0.27%
DRY PRAIRIES	1.5	0.93%	4.4	1.31%	16.2	1.91%	461.2	4.29%
EXTRACTIVE	0.9	0.53%	0.9	0.26%	1.1	0.13%	65.4	0.61%
FRESHWATER MARSH AND WET PRAIRIE	2.4	1.46%	7.3	2.17%	28.6	3.38%	235.7	2.19%
GRASSLAND	3.3	1.98%	3.3	0.99%	3.6	0.42%	52.9	0.49%
HARDWOOD HAMMOCKS AND FORESTS	0.2	0.13%	3.1	0.92%	30.4	3.59%	565.3	5.25%
HARDWOOD SWAMP	0.4	0.26%	1.1	0.33%	13.8	1.62%	266.6	2.48%
HIGH IMPACT URBAN	119.0	71.43%	207.0	61.87%	355.1	41.92%	1930.5	17.94%
IMPROVED PASTURE	0	0	0	0	1.1	0.13%	349.4	3.25%
LOW IMPACT URBAN	20.1	12.04%	51.9	15.52%	158.6	18.72%	1421.3	13.21%
MANGROVE SWAMP	0.4	0.26%	3.5	1.05%	21.3	2.51%	506.1	4.70%
MIXED HARDWOOD-PINE FORESTS	0.4	0.26%	5.1	1.51%	27.3	3.22%	467.0	4.34%
MIXED WETLAND FOREST	0	0	1.8	0.53%	7.8	0.92%	41.1	0.38%
OPEN WATER	0.9	0.53%	5.5	1.64%	39.9	4.71%	2335.7	21.70%
OTHER AGRICULTURE	0	0	0.7	0.20%	1.8	0.21%	157.2	1.46%
PINELANDS	1.8	1.06%	6.4	1.91%	41.9	4.95%	558.9	5.19%
SALT MARSH	5.3	3.17%	13.0	3.88%	47.7	5.63%	549.3	5.10%
SHRUB AND BRUSHLAND	1.1	0.66%	2.6	0.79%	9.3	1.10%	255.1	2.37%
SHRUB SWAMP	7.1	4.23%	12.8	3.81%	30.6	3.61%	305.8	2.84%

2009 SWFWMD FL Land Use and Land Cover

[metadata](#)

Alternative #2, analyzed on 9/18/2012.

[summary](#)

Land Use Classification	100 Ft.		200 Ft.		500 Ft.		1320 Ft.	
	Acr	Pct	Acr	Pct	Acr	Pct	Acr	Pct
BAYS AND ESTUARIES	4.7	2.84%	11.2	3.34%	38.3	4.52%	131.0	5.66%
COMMERCIAL AND SERVICES	15.3	9.16%	51.0	15.26%	126.0	14.87%	242.2	10.47%
EMERGENT AQUATIC VEGETATION	0.1	0.04%	0.6	0.19%	2.2	0.26%	4.6	0.2%
EXTRACTIVE	6.3	3.81%	31.3	9.36%	104.1	12.29%	300.9	13%
FRESHWATER MARSHES	0	0	0.2	0.06%	1.9	0.23%	6.1	0.26%
HARDWOOD CONIFER MIXED	3.8	2.31%	13.8	4.11%	41.6	4.91%	116.4	5.03%
INDUSTRIAL	5.3	3.19%	19.1	5.7%	65.1	7.69%	226.2	9.77%
INSTITUTIONAL	0	0	0	0	1.4	0.17%	6.1	0.26%
LAKES	0	0	0	0	0.6	0.07%	3.0	0.13%
MANGROVE SWAMPS	1.0	0.58%	6.8	2.02%	28.4	3.35%	131.2	5.67%
OPEN LAND	1.2	0.72%	3.0	0.89%	7.0	0.83%	29.2	1.26%
OTHER OPEN LANDS (RURAL)	0.2	0.09%	1.4	0.43%	7.9	0.93%	34.1	1.47%
PINE FLATWOODS	3.9	2.36%	16.1	4.81%	56.0	6.61%	180.2	7.79%
RECREATIONAL	0	0	1.1	0.32%	8.1	0.96%	16.1	0.69%
RESERVOIRS	0	0	0.2	0.05%	1.1	0.13%	8.4	0.36%
RESIDENTIAL HIGH DENSITY	2.8	1.71%	9.0	2.7%	27.6	3.25%	70.2	3.03%
RESIDENTIAL LOW DENSITY (LESS THAN 2 DWELLING UNITS)	0.6	0.37%	1.6	0.47%	4.7	0.55%	33.2	1.44%
RESIDENTIAL MED DENSITY (2-5 DWELLING UNITS)	5.1	3.04%	20.9	6.26%	107.3	12.66%	339.3	14.66%
SALTWATER MARSHES	5.3	3.19%	19.3	5.76%	56.2	6.64%	159.6	6.9%
STREAM AND LAKE SWAMPS (BOTTOMLAND)	0	0	0	0	0.4	0.05%	3.8	0.17%
STREAMS AND WATERWAYS	1.1	0.64%	2.9	0.86%	8.4	0.99%	33.7	1.46%
TRANSPORTATION	106.2	63.76%	111.8	33.43%	114.6	13.53%	120.9	5.22%
TROPICAL FISH FARMS	0	0	0	0	1.7	0.2%	18.5	0.8%
UTILITIES	1.0	0.63%	3.4	1.01%	10.9	1.29%	37.1	1.6%
WET PRAIRIES	0	0	0	0	2.7	0.32%	5.1	0.22%
WETLAND FORESTED MIXED	2.6	1.55%	9.9	2.97%	22.8	2.69%	49.6	2.14%

Florida Managed Areas

[metadata](#)

Alternative #2, analyzed on 9/19/2012.

[summary](#)

Name	100 Ft.	200 Ft.	500 Ft.	5280 Ft.
THE KITCHEN		✓	✓	✓



Field Survey Project Boundaries

[metadata](#)

Alternative #2, analyzed on 9/18/2012.

[summary](#)

Title	Publication Date	Manuscript Number	100 Ft.	200 Ft.	500 Ft.	1320 Ft.	5280 Ft.
CULTURAL RESOURCE ASSESSMENT SURVEY OF THE SOUTHWEST FLORIDA PIPELINE COMPANY CORRIDOR, HILLSBOROUGH, POLK, DESOTO, CHARLOTTE, AND LEE COUNTIES, FLORIDA	1991	3014	✓	✓	✓	✓	✓
ARCHAEOLOGICAL SURVEY OF THE STANFORD MARINA PROPERTY IN GIBSONTON, HILLSBOROUGH COUNTY, FLORIDA	1990	2476			✓	✓	✓
A PRELIMINARY ARCHAEOLOGICAL AND HISTORICAL SURVEY OF THE TAMPA-HILLSBOROUGH 201 PLAN	1979	816	✓	✓	✓	✓	✓
CULTURAL RESOURCE SURVEY OF MODIFICATIONS TO THE PROPOSED BAYSIDE LATERAL AND COMPRESSOR STATION 31, HILLSBOROUGH AND OSCEOLA COUNTIES, FLORIDA. FLORIDA GAS TRANSMISSION COMPANY (FGT), PHASE V EXPANSION	2000	6319	✓	✓	✓	✓	✓
CRAS PROPOSED TAMPA SOUTH LATERAL REROUTE ACCESS ROADS, HILLSBOROUGH COUNTY	2000	6400	✓	✓	✓	✓	✓
CULTURAL RESOURCE SURVEY AND EVALUATION REPORT OF THE FLORIDA GAS TRANSMISSION COMPANY PHASE IV EXPANSION	1999	5699	✓	✓	✓	✓	✓
A SUBMERGED CULTURAL RESOURCES REMOTE SENSING SURVEY OF ALAFIA, PORT SUTTON AND YBOR CHANNELS AND HISTORIC ASSESSMENT OF TAMPA HARBOR HILLSBOROUGH COUNTY, FLORIDA	1999	5808	✓	✓	✓	✓	✓
SURVEY REPORT FOR THE	2000	6130	✓	✓	✓	✓	✓

**Field Survey Project Boundaries**

[metadata](#)

**Alternative #2, analyzed on 9/18/2012.**

[summary](#)

Title	Publication Date	Manuscript Number	100 Ft.	200 Ft.	500 Ft.	1320 Ft.	5280 Ft.
FLORIDA GAS TRANSMISSION COMPANY PROPOSED BAYSIDE LATERAL HILLSBOROUGH COUNTY							
CRS OF MODIFICATIONS TO THE LAKE WALES SARASOTA AND TAMPA SOUTH LATERALS FGT COMPANY PHASE IV EXPANSION	2000	6141	✓	✓	✓	✓	✓
CULTURAL RESOURCE ASSESSMENT SURVEY, TECHNICAL MEMORANDUM, PORT SUTTON ROAD AT SR 45 (50TH STREET/US 41), HILLSBOROUGH COUNTY	2004	11403	✓	✓	✓	✓	✓
CULTURAL RESOURCE ASSESSMENT SURVEY OF THE PROPOSED TECO BIG BEND SCR AMMONIA SUPPLY PIPELINE, HILLSBOROUGH COUNTY	2006	12925	✓	✓	✓	✓	✓
FINAL CULTURAL RESOURCE ASSESSMENT SURVEY US 41 (SR 45) FROM 12TH STREET TO KRACKER AVENUE PROJECT DEVELOPMENT AND ENVIRONMENT (PD&E) STUDY, HILLSBOROUGH COUNTY, FLORIDA	2008	15978	✓	✓	✓	✓	✓

**Florida Site File Historic Bridges**

[metadata](#)

*Historic Bridges recorded in the Florida State Historic Preservation Office Master Site File.*

**Alternative #2, analyzed on 9/18/2012.**

[summary](#)

Site ID	Bridge Name	100 Ft.	200 Ft.	500 Ft.	1320 Ft.	5280 Ft.
HI01007	ALAFIA RIVER SWING SPAN BRIDGE		✓	✓	✓	✓

**Florida Site File Historic Standing Structures**

Historic Standing Structures recorded in the Florida State Historic Preservation Office Master Site File.

Alternative #2, analyzed on 9/18/2012.

[metadata](#)

[summary](#)

Site ID	Structure Name	Survey Evaluation	Site Evaluation	100 Ft.	200 Ft.	500 Ft.	1320 Ft.	5280 Ft.
HI01008	U.S. PHOSPHORIC PRODUCTS	ELIGIBLE FOR NRHP	NOT EVALUATED BY SHPO			✓	✓	✓
HI01022	GIANTS MOTEL	NOT EVALUATED BY RECORDER	NOT EVALUATED BY SHPO		✓	✓	✓	✓
HI01022A	GIANTS MOTEL UNIT 1	INELIGIBLE FOR NRHP	NOT EVALUATED BY SHPO		✓	✓	✓	✓
HI01022B	GIANTS MOTEL UNIT 2	INELIGIBLE FOR NRHP	NOT EVALUATED BY SHPO	✓	✓	✓	✓	✓
HI01022C	GIANTS MOTEL UNIT 3	INELIGIBLE FOR NRHP	NOT EVALUATED BY SHPO	✓	✓	✓	✓	✓
HI01022D	GIANTS MOTEL UNIT 4	INELIGIBLE FOR NRHP	NOT EVALUATED BY SHPO		✓	✓	✓	✓
HI01022E	GIANTS MOTEL UNIT 5	INELIGIBLE FOR NRHP	NOT EVALUATED BY SHPO		✓	✓	✓	✓
HI01022F	GIANTS MOTEL RESTAURANT	INELIGIBLE FOR NRHP	NOT EVALUATED BY SHPO		✓	✓	✓	✓
HI01022G	GIANTS MOTEL BAIT HOUSE	INELIGIBLE FOR NRHP	NOT EVALUATED BY SHPO			✓	✓	✓
HI01058	KEP-RITE TOURIST COURT OFFICE	NOT EVALUATED BY RECORDER	NOT EVALUATED BY SHPO	✓	✓	✓	✓	✓
HI01058A	KEP-RITE TOURIST COURT OFFICE A	INELIGIBLE FOR NRHP	NOT EVALUATED BY SHPO		✓	✓	✓	✓
HI01058B	KEP-RITE TOURIST COURT OFFICE B	INELIGIBLE FOR NRHP	NOT EVALUATED BY SHPO		✓	✓	✓	✓
HI01058C	KEP-RITE TOURIST COURT OFFICE C	INELIGIBLE FOR NRHP	NOT EVALUATED BY SHPO		✓	✓	✓	✓
HI01058D	KEP-RITE TOURIST COURT OFFICE D	INELIGIBLE FOR NRHP	NOT EVALUATED BY SHPO		✓	✓	✓	✓
HI01059	EAST TAMPA DEPOT	INELIGIBLE FOR NRHP	NOT EVALUATED BY SHPO		✓	✓	✓	✓
HI06462	6124 NUNDY AVENUE	INELIGIBLE FOR NRHP	NOT EVALUATED BY SHPO			✓	✓	✓
HI11378	6618 KRACKER AVENUE	INELIGIBLE FOR NRHP	INELIGIBLE FOR NRHP			✓	✓	✓
HI11379	6214 KRACKER AVENUE	INELIGIBLE FOR NRHP	INELIGIBLE FOR NRHP			✓	✓	✓

Resource Groups <a href="#">metadata</a>							
Alternative #2, analyzed on 9/18/2012. <a href="#">summary</a>							
Site ID	Site Name	SHPO Evaluation	100 Ft.	200 Ft.	500 Ft.	1320 Ft.	5280 Ft.
HI10237	CSX RAILROAD	INSUFFICIENT INFORMATION	✓	✓	✓	✓	✓

Brownfield Location Boundaries <a href="#">metadata</a>										
Alternative #2, analyzed on 9/19/2012. <a href="#">summary</a>										
Area Name	100 Ft.		200 Ft.		500 Ft.		1320 Ft.		5280 Ft.	
	Acr	Pct	Acr	Pct	Acr	Pct	Acr	Pct	Acr	Pct
KRACKER ROAD AREA	0.0	0.01%	0.4	0.11%	2.8	0.33%	12.4	0.54%	112.8	1.05%
PENDOLA POINT BROWNFIELD AREA	0.7	0.4%	4.4	1.33%	13.7	1.62%	31.5	1.36%	85.1	0.79%

Solid Waste Facilities <a href="#">metadata</a>						
Alternative #2, analyzed on 9/18/2012. <a href="#">summary</a>						
Facility Name	100 Ft.	200 Ft.	500 Ft.	1320 Ft.	5280 Ft.	
MAD DOG MULCHING	✓	✓	✓	✓	✓	
MAD DOG MULCHING	✓	✓	✓	✓	✓	

Toxic Release Inventory Sites <a href="#">metadata</a>				
U.S. EPA Toxic Release Inventory.				
Alternative #2, analyzed on 9/19/2012. <a href="#">summary</a>				
Facility Name	100 Ft.	200 Ft.	500 Ft.	5280 Ft.
PORT CONSOLIDATED INC			✓	✓

**Environmentally Sensitive Shorelines**

*Environmentally Sensitive Shorelines from FWRI, summarized by type.*

**Alternative #2, analyzed on 9/18/2012.**

[metadata](#)

[summary](#)

Type	100 Ft.	200 Ft.	500 Ft.	5280 Ft.
10A/10D: SALT- AND BRACKISH- WATER MARSH/SCRUB-SHRUB WETLANDS	259.609	2114.3558	9031.4691	39857.2564
10A/8B: SALT- AND BRACKISH- WATER MARSH/SHELTERED SOLID MAN-MADE STRUCTURES	42.4259	143.1566	143.1566	143.1566
10A/9B: SALT- AND BRACKISH- WATER MARSH/SHELTERED, VEGETATED LOW BANKS			56.0621	1850.0987
10A: SALT- AND BRACKISH- WATER MARSH		264.4103	777.4558	29322.2773
10C/9B: SWAMPS/SHELTERED, VEGETATED LOW BANKS	86.1323	304.9782	953.5755	3746.2437
10C: ESTUARINE/LACUSTRINE/RIVERINE: SWAMPS	41.6575	155.1884	500.328	13623.6481
10D: SCRUB-SHRUB WETLANDS	643.3779	2192.5887	8637.6433	150614.3272
3A: FINE- TO MEDIUM- GRAINED SAND BEACHES			168.7176	250.724
8B: SHELTERED SOLID MAN-MADE STRUCTURES	2184.1502	3006.5649	4055.7152	17377.1631
9B: SHELTERED, VEGETATED LOW BANKS	264.024	652.5678	2111.1186	22095.8025

**Mangroves**

*Environmental Sensitivity Index Coastal Mangroves.*

**Alternative #2, analyzed on 9/18/2012.**

[metadata](#)

[summary](#)

Type	100 Ft.		200 Ft.		500 Ft.		5280 Ft.	
	Acr	Pct	Acr	Pct	Acr	Pct	Acr	Pct
MANGROVE SWAMP	1.0	0.58%	6.8	2.02%	28.4	3.35%	641.5	5.96%

**Submerged Lands Act**

**Alternative #2, analyzed on 9/18/2012.**

[metadata](#)

[summary](#)

Description	100 Ft.		200 Ft.		500 Ft.		1320 Ft.		5280 Ft.	
	Acr	Pct	Acr	Pct	Acr	Pct	Acr	Pct	Acr	Pct
SUBMERGED LANDS ACT	0	0	0	0	1.1	0.12%	25.7	1.11%	1461.2	13.58%

**Prime Farm Land**

*Subset of SSOILS data designated as prime farm land.*

**Alternative #2, analyzed on 9/18/2012.**

[metadata](#)

[summary](#)

Farmland Classification	100 Ft.		200 Ft.		500 Ft.		5280 Ft.	
	Acr	Pct	Acr	Pct	Acr	Pct	Acr	Pct
FARMLAND OF UNIQUE IMPORTANCE	106.2	63.76%	207.4	61.99%	466.6	55.08%	3720.0	34.56%

**2000 Census Block Data**

2000 US Census Bureau data by block. Detailed information is for each of the entire blocks that intersect an analysis area.

Alternative #2, analyzed on 9/18/2012.

[metadata](#)

[summary](#)

	2000 Population	# Households	# White	# Black	# Native American	# Asian	# Hispanic	# Other Race	Males	Females	Native Hawaiian and Other Pacific Islander Alone
<b>Totals</b>	2808	1027	2373	48	20	16	679	293	1505	1303	0

**2000 Census data Block Groups - Indicators**

Alternative #2, analyzed on 9/18/2012.

[metadata](#)

[summary](#)

	Speak English "Not At All"	Housing Units With No Vehicle Available	Housing Units With 1 Vehicle Available	Housing Units With 2 Vehicles Available	Housing Units With 3 Vehicles Available	Housing Units With 4 vehicles Available	Housing Units With 5 or More Vehicles Available
<b>Totals</b>	147	202	1051	845	211	47	48

**County Demographics - 2000 Census**  
 2000 Census General Demographic Profile by County.  
 Alternative #2, analyzed on 9/18/2012.

[metadata](#)

[summary](#)

County	Total Population	# Male	# Female	Median Age	# White	# Black or African American	# American Indian, Eskimo, or Aleut	# Asian	# Native Hawaiian and Other Pacific Islander	# Some Other Race	# Hispanic or Latino (of any race).	Total Number of Households	Average Household Size	100 Ft.	200 Ft.	500 Ft.	1320 Ft.	5280 Ft.
HILLSBOROUGH	9989 48	4887 72	5101 76	35.1	7509 03	1494 23	3879	2194 7	727	4653 9	1796 92	3913 57	2.51	✓	✓	✓	✓	✓

**Existing Recreational Trails 2005**

[metadata](#)

Alternative #2, analyzed on 9/19/2012.

[summary](#)

Trail Name	100 Ft.	200 Ft.	500 Ft.	1320 Ft.	5280 Ft.
ALAFIA RIVER TRAIL	200.0841	404.2395	1163.4726	4050.1138	16256.584
BULLFROG CREEK TRAIL	131.1545	343.3969	1012.446	5836.866	15967.4761
HILLSBOROUGH BAY TRAIL		103.1343	409.418	1239.4606	41913.3809

**Geocoded Parks**

[metadata](#)

Alternative #2, analyzed on 9/18/2012.

[summary](#)

Name	Description	100 Ft.	200 Ft.	500 Ft.	1320 Ft.	5280 Ft.
WILLIAMS	WILLIAMS			✓	✓	✓
PARK AT PALM GROVE	PARK AT PALM GROVE			✓	✓	✓

## Permits Required

Permit Name	Type	Review Date
Environmental Resource Permit	State	07/02/12
U.S. Coast Guard Bridge Permit	Federal	09/13/12
FDEP NPDES General Permit	Other	07/02/12
Dredge and Fill Permit	USACE	07/02/12
U.S Coast Guard Bridge Permit	Other	07/02/12
Environmental Resource Permit	Water	07/02/12
Section 404 Water Quality Certification	USACE	07/02/12
Consent of Use, Lease, or Easement to use Sovereign Submerged Lands	State	09/13/12

## Technical Studies Required

Technical Study Name	Type	Review Date
Location Hydraulics Report	ENGINEERING	07/02/12
Drainage/Pond Siting Report	ENGINEERING	09/13/12
Bridge Hydraulic Report	ENGINEERING	07/02/12
Public Involvement Plan	ENVIRONMENTAL	07/02/12
Noise Study Report	ENVIRONMENTAL	07/02/12
Contamination Screening Evaluation Report	ENVIRONMENTAL	07/02/12
Public Hearing Transcript	ENVIRONMENTAL	07/02/12
Traffic Analysis	ENGINEERING	07/02/12
State Environmental Impact Report (SEIR)	ENVIRONMENTAL	09/13/12
Public Hearing Scrapbook	ENVIRONMENTAL	07/02/12
USCG Bridge Questionnaire	Other	07/02/12
Essential Fish Habitat Assessment	ENVIRONMENTAL	07/02/12
Comments and Coordination Report	ENVIRONMENTAL	07/02/12
Preliminary Engineering Report	ENGINEERING	07/02/12
Water Quality Impact Evaluation (WQIE)	ENVIRONMENTAL	07/02/12
Cultural Resource Assessment Survey	ENVIRONMENTAL	07/02/12
Wetlands Evaluation and Biological Assessment Report	ENVIRONMENTAL	09/13/12

## General Project Commitments

Date	Description
05/27/2005	US 41 FROM SR 674 (COLLEGE AVE.) TO MADISON AVE. Hillsborough County Response to Florida Department of State: Additional right-of-way will be required for this project. It is anticipated that a rural typical section will be used.

## Screening Summary Overview

	Evaluation of Direct Effects															Secondary and Cumulative Effects					
	Natural					Cultural					Community										
	Air Quality	Coastal and Marine	Contaminated Sites	Farmlands	Floodplains	Infrastructure	Navigation	Special Designations	Water Quality and Quantity	Wetlands	Wildlife and Habitat	Historic and Archaeological Sites	Recreation Areas	Section 4(f) Potential	Aesthetics	Economic	Land Use	Mobility	Relocation	Social	
<b>Legend</b>																					
N/A	N/A / No Involvement																				
1	Enhanced																				
2	Minimal to None (before 12/5/2005)																				
3	Moderate																				
4	Substantial																				
5	Potential Dispute (Planning)																				
<b>ETAT Review Period: 03/01/2005 - 04/15/2005. Published: 06/09/2005</b>																					
<b>Alternative #1</b>	2	4	3	2	3	3	3	3	4	4	3	4	3	4	2	3	2	2	2	3	2
<b>From SR 674 (College Ave.) to Madison Ave</b>	2	4	3	2	3	3	3	3	4	4	3	4	3	4	2	3	2	2	2	3	2





Alternative #1 - Project Effects Overview			
Issue	Degree of Effect	Organization	Date Reviewed
<b>Natural</b>			
Air Quality	2 Minimal to None	US Environmental Protection Agency	04/15/2005
Air Quality	2 Minimal to None	Southwest Florida Water Management District	04/14/2005
Coastal and Marine	4 Substantial	Southwest Florida Water Management District	04/14/2005
Coastal and Marine	4 Substantial	National Marine Fisheries Service	04/11/2005
Contaminated Sites	3 Moderate	US Environmental Protection Agency	04/15/2005
Contaminated Sites	4 Substantial	Southwest Florida Water Management District	04/14/2005
Farmlands	No reviews recorded.		
Floodplains	3 Moderate	US Environmental Protection Agency	04/15/2005
Floodplains	4 Substantial	Southwest Florida Water Management District	04/14/2005
Infrastructure	No reviews recorded.		
Navigation	3 Moderate	US Coast Guard	04/14/2005
Special Designations	4 Substantial	US Environmental Protection Agency	04/15/2005
Special Designations	3 Moderate	Southwest Florida Water Management District	04/14/2005
Water Quality and Quantity	4 Substantial	US Environmental Protection Agency	04/15/2005
Water Quality and Quantity	2 Minimal to None	FL Department of Environmental Protection	04/14/2005
Water Quality and Quantity	4 Substantial	Southwest Florida Water Management District	04/14/2005
Wetlands	3 Moderate	US Environmental Protection Agency	04/15/2005
Wetlands	4 Substantial	US Fish and Wildlife Service	04/14/2005
Wetlands	2 Minimal to None	FL Department of Environmental Protection	04/14/2005
Wetlands	3 Moderate	Southwest Florida Water Management District	04/14/2005
Wetlands	4 Substantial	US Army Corps of Engineers	04/13/2005
Wetlands	4 Substantial	National Marine Fisheries Service	04/11/2005
Wildlife and Habitat	3 Moderate	US Fish and Wildlife Service	04/14/2005
Wildlife and Habitat	4 Substantial	Southwest Florida Water Management District	04/14/2005
<b>Cultural</b>			
Historic and Archaeological Sites	4 Substantial	FL Department of State	04/15/2005
Recreation Areas	3 Moderate	US Environmental Protection Agency	04/15/2005
Recreation Areas	2 Minimal to None	FL Department of Environmental Protection	04/14/2005
Recreation Areas	3 Moderate	Southwest Florida Water Management District	04/14/2005
Section 4(f) Potential	No reviews recorded.		
<b>Community</b>			
Aesthetics	No reviews recorded.		
Economic	No reviews recorded.		
Land Use	3 Moderate	FL Department of Community Affairs	04/14/2005
Mobility	No reviews recorded.		
Relocation	No reviews recorded.		
Social	No reviews recorded.		
<b>Secondary and Cumulative</b>			

Secondary and Cumulative Effects	No reviews recorded.
----------------------------------	----------------------

**Natural**

**Coordinator Summary: Air Quality Issue**

**2** *Minimal to None* assigned 05/26/2005 by FDOT District 7

**Comments:** The project is located in an area that has been designated as attainment with maintenance for all air quality standards under the criteria provided in the Clean Air Act Amendments of 1990. Based on this designation, compliance with the Transportation Conformity Rule (40 CFR Part 93, Subpart T) does apply to this project. Therefore, FDOT recommends a Degree of Effect of Minimal to None for Air Quality.

**Coordinator Summary: Coastal and Marine Issue**

**4** *Substantial* assigned 05/26/2005 by FDOT District 7

**Comments:** The FDOT concurs with the comments from National Marine Fisheries Service and Southwest Florida Water Management District and a Degree of Effect of Substantial. The FDOT will take all measures to provide appropriate turbidity and erosion control measures during project construction. Also, the FDOT is aware of the mangrove and estuarine habitat areas surrounding the project and will initiate consultation for Essential Fish Habitat (EFH) as soon as specific project design and construction impact information are available. The FDOT did not receive comment from the Florida Department of Environmental Protection (DEP), but expects comments from the DEP in the Programming Screen concerning Coastal Zone Consistency Compliance.

**Coordinator Summary: Contaminated Sites Issue**

**3** *Moderate* assigned 05/26/2005 by FDOT District 7

**Comments:** The FDOT concurs with the comments from US Environmental Protection Agency and Southwest Florida Water Management District, but recommends a Degree of Effect of Moderate. The existing land is approximately 19.4% agricultural within the 200-ft. buffer area of the proposed project. Within the 100-ft. project buffer area there are two EPA Toxic Release Inventory sites (GNB, Inc. and Cargill Fertilizer Inc.), one hazardous waste site (GTE of Florida Ruskin EAX Co.), and numerous petroleum and gas tanks sites. Within the 200-ft. buffer area is the Ruskin SLF, a solid waste facility. Within the 500-ft. project buffer area is First Baptist Ruskin Christian School, one hazardous waste site (Martin Gas Sales), and three solid waste facilities (South Hillsborough Transfer Station, Eagle Demolition Transfer Station, and Permabase Demonstration Project). Within the 100-ft. project buffer area there are numerous petroleum sites and gas tanks. The issues associated with the construction of the roadway near these facilities will be evaluated and addressed in all phases of the project. Also, a Contamination Screening Evaluation Report will be prepared during project development.

**Coordinator Summary: Farmlands Issue**

**2** *Minimal to None* assigned 05/26/2005 by FDOT District 7

**Comments:** The U.S. Department of Agriculture did not provide comments regarding Farmlands. The existing land is approximately 19.4% agricultural within the 200-ft. buffer area of the proposed project. There are no prime and unique farmlands. Farmlands will be evaluated in the Programming Screen and project development to decide if a farmland evaluation and Form AD-1006 is warranted. The FDOT recommends a Degree of Effect of Minimal to None.

**Coordinator Summary: Floodplains Issue**

**3** *Moderate* assigned 05/26/2005 by FDOT District 7

**Comments:** The FDOT concurs with the comments from US Environmental Protection Agency and Southwest Florida Water Management District, but recommends a Degree of Effect of Moderate. Approximately 9,700 linear feet of Environmentally Sensitive Shoreline intersect within a 200-foot buffer along with 4.7 acres (0.7%) of mangroves. At the 500-ft. buffer area, 86.9% of the project is located within the 100-year floodplain (Zone AE of the flood hazard designation). The FDOT acknowledges that runoff from the roadway during a significant storm event may negatively impact nearby surface waters and wetlands. The FDOT will verify and quantify potential impacts to these floodplain areas, evaluate for compensation for lost riverine floodplain storage and other encroachment impacts, and identify mitigation for any subsequent loss of historic basin storage. This information will be incorporated into the project commitments in project development.

**Coordinator Summary: Infrastructure Issue**

**3** *Moderate* assigned 05/26/2005 by FDOT District 7

**Comments:** There is a railroad that totals 12,877 linear feet within the 200-ft. project buffer area.

Within the 100-ft. project buffer area there is one hazardous waste site (GTE of Florida Ruskin EAX Co.). Within the 200-ft. buffer area is the Ruskin SLF, a solid waste facility. Within the 500-ft. project buffer area is one hazardous waste site (Martin Gas Sales) and three solid waste facilities (South Hillsborough Transfer Station, Eagle Demolition Transfer Station, and Permabase Demonstration Project). There are also numerous petroleum sites and gas tanks along the project corridor.

The Florida Geographic Data Library (FGDL) does not identify any other infrastructure facilities in this corridor; therefore, the FDOT recommends a Degree of Effect of Moderate. The FDOT, however, will research any other facilities (i.e. utilities) that might be considered as infrastructure in project development.

**Coordinator Summary: Navigation Issue**

**3** *Moderate* assigned 05/26/2005 by FDOT District 7

**Comments:** The FDOT concurs with the comments from US Coast Guard and a Degree of Effect of Moderate. There are two waterways that will need a Coast Guard permit/amendment for the modification or replacement of the bridge; US 41 bridge across the Alafia River and US 41 bridge across Bull Frog Creek. There are other facility crossings along the project corridor that consist of bridges or box culverts. Any structures located within the existing corridor will be evaluated in the Programming Screen and included in project cost estimations and Class of Action determination. These structures will also be considered in project development.

#### Coordinator Summary: Special Designations Issue

**3** *Moderate* assigned 05/26/2005 by FDOT District 7

**Comments:** The FDOT concurs with the comments from US Environmental Protection Agency and Southwest Florida Water Management District, but recommends a Degree of Effect of Moderate. Within the 200-ft. project buffer area there are Florida Natural Areas Inventory Managed Lands (The Kitchen), approximately 9,700 linear feet of Environmentally Sensitive Shoreline, and 4.7 acres (0.7%) of mangroves. The FDOT will take all measures to develop avoidance alternatives and/or measures to minimize harm to these resources.

At the 500-ft. buffer area, 86.9% of the project is located within the 100-year floodplain (Zone AE of the flood hazard designation). The FDOT will verify and quantify potential impacts to these floodplain areas, evaluate for compensation for lost riverine floodplain storage and other encroachment impacts, and identify mitigation for any subsequent loss of historic basin storage. This information will be incorporated into the project commitments in project development.

The FDOT acknowledges that there may be possible Sovereign Submerged Lands and will investigate further for such lands during project development.

#### Coordinator Summary: Water Quality and Quantity Issue

**4** *Substantial* assigned 05/26/2005 by FDOT District 7

**Comments:** The FDOT concurs with the comments from US Environmental Protection Agency and Southwest Florida Water Management District and recommends a Degree of Effect of Substantial. The FDOT acknowledges the Florida Department of Environmental Protections recommendation.

Black Point Channel, Alafia River above Hillsborough Bay, and Bullfrog Creek are within the 100-ft. buffer area. These water bodies are listed as Impaired Waters under the Impaired Waters Rule, Chapter 62-303, FAC. The constructed project will reduce stormwater runoff via stormwater treatment facilities and BMPs. In accordance with Chapters 3 and 5 of the Environmental Resource Permit Basis of Review, the FDOT will protect and treat in-stream water quality of stormwater discharge. The FDOT will also take all measures to provide appropriate turbidity and erosion control measures during project construction and provide review of outfall points to determine portions of the project that outfall into tidal areas.

#### Coordinator Summary: Wetlands Issue

**4** *Substantial* assigned 05/27/2005 by FDOT District 7

**Comments:** The FDOT recommends a Degree of Effect of Substantial for Wetlands. The FDOT concurs with the comments from US Environmental Protection Agency, US Fish and Wildlife Service, US Army Corp of Engineers, National Marine Fisheries Service, Florida Department of Environmental Protection, and Southwest Florida Water Management District. Within the 200-foot project buffer area, NWI indicates 29.3 acres of wetlands and surface waters (4% of project corridor), FLUCFCS indicates 50 acres of wetlands and surface waters (7% of project corridor), FFWCC Priority Wetlands (1-9 focal species) indicates approximately 41 acres (6% of project corridor), and there are 4.7 acres (0.7% of project corridor) of mangroves.

The FDOT will conduct a detailed wetland evaluation, formal wetland delineation of the project area together with a UMAM analysis, and provide a report to the appropriate agencies for review during project development. The FDOT will employ avoidance and minimization of impacts. Where impacts are to wetlands and surface waters associated with the project are unavoidable the FDOT will coordinate with the appropriate agencies to provide adequate wetland mitigation.

Also, the FDOT is aware of the mangrove and estuarine habitat areas surrounding the project and will initiate consultation for EFH as soon as specific project design and construction impact information are available.

In response to SWFWMDs comment concerning request for placement on District Sevens Wetland Impact Inventory within the upcoming annual May 2005 update, the FDOT does not quantify wetland impacts during the early planning stage. If the option proposed by SWFWMD (F.S. 373.4137) is not available during design or permitting, the FDOT will pursue other traditional Environmental Resource Permit mitigation options. Options available for FDOT to compensate for the anticipated wetland impacts include participation in a public or private mitigation bank provided wetland credits are available for use on this project during the permitting and final design phase. Another option would be to create, restore, enhance, or preserve wetlands in the projects watershed. Depending on the type or combination of types employed, the offsetting ratios will vary considerably. Adhering to SWFWMDs Environmental Resource Permitting Information Manual, mitigation ratio guidelines will be 2:1 to 5:1 (created/restored) for forested impacts and 15:1 to 4:1 for non-forested impacts. The estimated ratio for enhancement will range from 4:1 to 20:1 and the ratio for wetland preservation will be in the range of 10:1 to 60:1.

#### Coordinator Summary: Wildlife and Habitat Issue

**3** *Moderate* assigned 05/26/2005 by FDOT District 7

**Comments:** The FDOT concurs with the comments from US Fish and Wildlife Service and Southwest Florida Water Management District, but recommends a Degree of Effect of Moderate.

Within the 200-ft. project buffer area there are Florida Natural Areas Inventory Managed Lands (The Kitchen), approximately 9,700 linear feet of Environmentally Sensitive Shoreline, Florida Natural Areas Inventory Managed Lands (The Kitchen), 4.7 acres (0.7% of project corridor) of mangroves, 10.9 ac. (0.6 % of project corridor) of Florida Fish and Wildlife Conservation Commission (FFWCC) Strategic Habitat Conservation Area, and

approximately 41 acres of FFWCC Priority Wetlands (1-9 focal species) totaling 6% of project corridor. The entire corridor is also within the Greater Tampa Bay Ecosystem Management Area. The Eastern Indigo snake, bald eagle, Florida manatee, wading birds, and federally listed plants are known to be within the project area. The FDOT will take all measures to develop avoidance alternatives and/or measures to minimize harm to these resources. In project development, the FDOT will incorporate into the project commitments directions for the use the USFWS Manatee Standard Construction Guidelines and Standard Protection Measures for the Eastern Indigo snake during construction of the project.

## Cultural

### Coordinator Summary: Historic and Archaeological Sites Issue

4 *Substantial* assigned 05/26/2005 by FDOT District 7

**Comments:** The FDOT concurs with the comments from Florida Department of State and a Degree of Effect of Substantial. The project area has not been subject to a systematic cultural resources assessment survey (CRAS) and potential effects to known and recorded historic properties within the project corridor could be adverse. Within the 100-ft. buffer area is the NRHP listed George Miller MCA House. Within the 200-ft. buffer area is the Alafia River Swing Span Bridge (potentially eligible) and the Ruskin Family Drive-In Theatre Resource Group. Within the 500-ft. buffer area is the NRHP listed Dickman, A.P. House. There are also other significant archaeological and historic sites that occur within the project area. All resources outside of the 500-ft. buffer are unlikely to be adversely affected due to their distance from the proposed project area. A CRAS will be conducted in the project development phase. A Section 4(f) Evaluation and Section 106 Consultation may need to be conducted to assess the impacts to these resources. The FDOT will take all measures to develop avoidance alternatives and/or measures to minimize harm to these resources.

### Coordinator Summary: Recreation Areas Issue

3 *Moderate* assigned 05/26/2005 by FDOT District 7

**Comments:** The FDOT concurs with the comments from US Environmental Protection Agency and Southwest Florida Water Management District and recommends a Degree of Effect of Moderate. The FDOT acknowledges the Florida Department of Environmental Protections recommendation. Within the 200-ft. project buffer area there is Florida Natural Areas Inventory Managed Lands (The Kitchen) and Greenways Ecological Priority Linkages totaling 148.5 ac. (21.1%). Also, Williams Park, First Baptist Ruskin Christian School, several public boat ramps, and multi-use trails are located in the immediate vicinity of the project. A Section 4(f) Evaluation may need to be conducted to assess the impacts to these resources. The FDOT will take all measures to develop avoidance alternatives and/or measures to minimize harm to these resources.

### Coordinator Summary: Section 4(f) Potential Issue

4 *Substantial* assigned 05/26/2005 by FDOT District 7

**Comments:** The FDOT recommends a Degree of Effect of Substantial based on the following factors:

Within the 200-ft. project buffer area there is Florida Natural Areas Inventory Managed Lands (The Kitchen) and Greenways Ecological Priority Linkages totaling 148.5 ac. (21.1%). Also, Williams Park, First Baptist Ruskin Christian School, several public boat ramps, and multi-use trails are located in the immediate vicinity of the project. A Section 4(f) Evaluation may need to be conducted to assess the impacts to these resources. The FDOT will take all measures to develop avoidance alternatives and/or measures to minimize harm to these resources.

The project area has not been subject to a systematic cultural resources assessment survey (CRAS) and potential effects to known and recorded historic properties within the project corridor could be adverse. Within the 100-ft. buffer area is the NRHP listed George Miller MCA House. Within the 200-ft. buffer area is the Alafia River Swing Span Bridge (potentially eligible) and the Ruskin Family Drive-In Theatre Resource Group. Within the 500-ft. buffer area is the NRHP listed Dickman, A.P. House. There are also other significant archaeological and historic sites that occur within the project area. All resources outside of the 500-ft. buffer are unlikely to be adversely affected due to their distance from the proposed project area. A CRAS will be conducted in the project development phase. A Section 4(f) Evaluation and Section 106 Consultation may need to be conducted to assess the impacts to these resources. The FDOT will take all measures to develop avoidance alternatives and/or measures to minimize harm to these resources.

## Community

### Coordinator Summary: Aesthetics Issue

2 *Minimal to None* assigned 05/26/2005 by FDOT District 7

**Comments:** The majority of land use is commercial, transportation, and agricultural. The existing land use has only 176.7 ac. (10%) of residential use within the 500-ft. project buffer area; therefore, the FDOT recommends a Degree of Effect of Minimal to None.

### Coordinator Summary: Economic Issue

3 *Moderate* assigned 05/26/2005 by FDOT District 7

**Comments:** There are numerous bus transit routes and stops along the corridor. A number of approved Developments of Regional Impact (DRIs) are in varying stages of implementation (i.e. Apollo Beach, Bayside, Boca Bahia Park, Gardiner Disposal Site, and South Bend, etc.). The US 41 corridor will certainly be affected by these development activities. The proposed improvements to US 41, which is a regional connection, should increase the economic viability of the area as it will provide increased accessibility and visibility for commercial and residential uses located along the roadway.

The FDOT recognizes there are minority populations (greater than 40%) and low-income households, which is located in certain areas within the proposed transportation corridor that potentially may be impacted by the proposed improvements. This project will be developed in accordance with the Civil Rights Act of 1964, as amended by the Civil Rights Act of 1968. Along with Title VI of the Civil Rights Act, Executive Order 12898 (Environmental Justice) ensures that minority and/or low-income households are neither disproportionately adversely impacted by major transportation projects, nor denied reasonable access to them by excessive costs or physical barriers (Environmental Protection Agency [EPA], 1994). The FDOT will consider design alternatives that are consistent with the desires of the communities, Executive Order 12898, and the overall development plan for the County in

developing the proposed project. The FDOT will examine the need for special public involvement/public outreach requirements during development of the proposed project. In consideration of these factors, the FDOT recommends a Degree of Effect of Moderate.

#### Coordinator Summary: Land Use Issue

**2** *Minimal to None* assigned 05/26/2005 by FDOT District 7

**Comments:** The FDOT acknowledges the Florida Department of Community Affairs recommendation, but recommends a Degree of Effect of Minimal to None based on the following factors. Based on F.S.339.175(6), the Long Range Transportation Plan (LRTP) of the metropolitan planning organization (MPO) must be consistent, to the maximum extent feasible, with future land use elements and the goals, objectives, and policies in the approved local government comprehensive plans within the jurisdiction of the MPO. The proposed project, which is included in the latest update of the LRTP, is being entered into the Planning Screen. While generally there is consistency between the LRTP and the local government comprehensive plan at this time, any inconsistency that exists is not critical at this point in the process. There are currently no segments within the project limits programmed in the FDOT Five Year Work Program. Prior to advancing any portion of the proposed project into the Work Program, consistency between the MPOs LRTP and the Future of Hillsborough Transportation Element of the Comprehensive Plan will be achieved.

#### Coordinator Summary: Mobility Issue

**2** *Minimal to None* assigned 05/26/2005 by FDOT District 7

**Comments:** There is a railroad that totals 12,877 linear feet within the 200-ft. project buffer area and the First Baptist Ruskin Christian School is within the 500-ft. buffer area. There are bus transit route numbers 31, 84, and 54X and numerous bus stops along the corridor. The FDOT recommends a Degree of Effect of Minimal to None. The FDOT will coordinate with HARTline during project development and design phases to ensure minimal relocation or disruption to transit access and/or service.

#### Coordinator Summary: Relocation Issue

**2** *Minimal to None* assigned 05/26/2005 by FDOT District 7

**Comments:** The majority of land use is commercial, transportation, and agricultural. The existing land use has only 176.7 ac. (10%) of residential use within the 500-ft. project buffer area. The FDOT will consider impacts to these land uses during project development and will develop alternatives to avoid or minimize relocations. In consideration of these factors, the FDOT recommends a Degree of Effect of Minimal to None.

#### Coordinator Summary: Social Issue

**3** *Moderate* assigned 05/27/2005 by FDOT District 7

**Comments:** The FDOT recommends a Degree of Effect of Moderate based on the following factors:

Within the 200-ft. project buffer area there is Florida Natural Areas Inventory Managed Lands (The Kitchen) and Greenways Ecological Priority Linkages totaling 148.5 ac. (21.1%). Also, Williams Park, First Baptist Ruskin Christian School, several public boat ramps, and multi-use trails are located in the immediate vicinity of the project. A Section 4(f) Evaluation may need to be conducted to assess the impacts to these resources. The FDOT will take all measures to develop avoidance alternatives and/or measures to minimize harm to these resources.

The project area has not been subject to a systematic cultural resources assessment survey (CRAS) and potential effects to known and recorded historic properties within the project corridor could be adverse. Within the 100-ft. buffer area is the NRHP listed George Miller MCA House. Within the 200-ft. buffer area is the Alafia River Swing Span Bridge (potentially eligible) and the Ruskin Family Drive-In Theatre Resource Group. Within the 500-ft. buffer area is the NRHP listed Dickman, A.P. House. There are also other significant archaeological and historic sites that occur within the project area. All resources outside of the 500-ft. buffer are unlikely to be adversely affected due to their distance from the proposed project area. A CRAS will be conducted in the project development phase. A Section 4(f) Evaluation and Section 106 Consultation may need to be conducted to assess the impacts to these resources. The FDOT will take all measures to develop avoidance alternatives and/or measures to minimize harm to these resources.

Within the project corridor are Veterans of Foreign Wars, YMCA, 100 Club, Ruskin Branch Library, Housecall Home Healthcare, First Baptist Ruskin Christian School, Freedom Christian School, along with numerous government buildings, post offices, social service facilities and churches. The FDOT will take all measures to develop avoidance alternatives and/or measures to minimize harm to these resources.

A number of approved Developments of Regional Impact (DRIs) are in varying stages of implementation (i.e. Apollo Beach, Bayside, Boca Bahia Park, Gardiner Disposal Site, and South Bend, etc.). The US 41 corridor will certainly be affected by these development activities. The proposed improvements to US 41, which is a regional connection, should increase the economic viability of the area as it will provide increased accessibility and visibility for commercial and residential uses located along the roadway.

The FDOT recognizes there are minority populations (greater than 40%) and low-income households, which is located in certain areas within the proposed transportation corridor that potentially may be impacted by the proposed improvements. This project will be developed in accordance with the Civil Rights Act of 1964, as amended by the Civil Rights Act of 1968. Along with Title VI of the Civil Rights Act, Executive Order 12898 (Environmental Justice) ensures that minority and/or low-income households are neither disproportionately adversely impacted by major transportation projects, nor denied reasonable access to them by excessive costs or physical barriers (Environmental Protection Agency [EPA], 1994). The FDOT will consider design alternatives that are consistent with the desires of the communities, Executive Order 12898, and the overall development plan for the County in developing the proposed project. The FDOT will examine the need for special public involvement/public outreach requirements during development of the proposed project. In consideration of these factors, the FDOT recommends a Degree of Effect of Moderate.

There are two waterways that will need a Coast Guard permit/amendment for the modification or replacement of the bridge; US 41 bridge across the Alafia River and US 41 bridge across Bull Frog Creek. There are other facility crossings along the project corridor that consist of bridges or box culverts. Any structures located within the existing corridor will be evaluated in the Programming Screen and included in project cost estimations and Class of Action determination. These structures will also be considered in project development.

The existing land is approximately 19.4% agricultural within the 200-ft. buffer area of the proposed project. Within the 100-ft. project buffer area there are two EPA Toxic Release Inventory sites (GNB, Inc. and Cargill Fertilizer Inc.) and one hazardous waste site (GTE of Florida Ruskin EAX Co.). Within the 200-ft. buffer area is the Ruskin SLF, a solid waste facility. Within the 500-ft. project buffer area is First Baptist Ruskin Christian School, one hazardous waste site (Martin Gas Sales), and three solid waste facilities (South Hillsborough Transfer Station, Eagle Demolition Transfer Station, and PermaBase Demonstration Project). There are also numerous petroleum sites and gas tanks along the project corridor. The issues associated with the construction of the roadway near these facilities will be evaluated and addressed in all phases of the project.

There is a railroad that totals 12,877 linear feet within the 200-ft. project buffer area. There are bus transit route numbers 31, 84, and 54X and numerous bus stops along the corridor. The FDOT will coordinate with HARTline during project development and design phases to ensure minimal relocation or disruption to transit access and/or service.

**Secondary and Cumulative**

**Coordinator Summary: Secondary and Cumulative Effects Issue**

2 Minimal to None assigned 05/27/2005 by FDOT District 7

**Comments:** Transportation improvement needs are identified in the Long Range Transportation Plan (LRTP) and in response to the development allowed in the local government Comprehensive Plans, of which, the Future Land Use Plan is an element.

This project is identified in the Hillsborough County MPOs LRTP. Therefore, the proposed project would appear to have little influence, if any, on the rate of development in the area. The current and future development will continue to occur, if it is financially viable and consistent with the approved development thresholds in the local Comprehensive Plan and applicable federal and state laws. As a result, indirect, secondary, and cumulative impacts associated with the project implementation are recognized when developing Future Land Use Plans.

Given the projected future growth and land use designations, the implementation of the proposed US 41 project is not expected to substantially alter development patterns along the project. In consideration of these factors, the FDOT recommends at Minimal to None as the Degree of Effect.

**Resource Maps**

A hardcopy map series for this project is available on the Public ETDM Website. Please click on the link below (or copy this link into your Web Browser) in order to view a listing of the hardcopy maps available for this project:

<http://etdmpub.fl-a-etat.org/est/index.jsp?tpID=5180&startPageName=Hardcopy%20Maps>

**Special Note:** Please be sure that when the Hardcopy Maps page loads, the **Project Milestone Date** corresponding to this Advance Notification is selected. Hardcopy map snapshots have been taken for Project #5180 at various points throughout the project's life-cycle, so it is important that you view the correct snapshot.

**Class of Action**

No Data Available

**Dispute Resolution Activity Log**

No Data Available

**Ancillary Documentation**

No Data Available

**Transmittal List**

**Official Transmittal List**

	Organization	Name
1.	Bureau of Indian Affairs	* Office of Trust Responsibilities - Environmental Services Staff
2.	City of Plant City	Scearce, Phil
3.	FDOT District 7	Andrews, James
4.	FDOT District 7	Rhinesmith, Robin
5.	Federal Aviation Administration	* Airports District Office
6.	Federal Highway Administration	Anderson, Linda
7.	Federal Highway Administration	Cunill, Buddy
8.	Federal Highway Administration	Kendall, Cathy
9.	Federal Highway Administration	Sullivan, Joseph

10.	Federal Highway Administration	Williams, Marvin L.
11.	FIHS Central Office	Hatim, Khaleda
12.	FL Department of Agriculture and Consumer Services	Hardin, Dennis
13.	FL Department of Agriculture and Consumer Services	Morris, Vince
14.	FL Department of Economic Opportunity	Hallock-Solomon, Jeannette
15.	FL Department of Economic Opportunity	Wiglesworth, Chris
16.	FL Department of Environmental Protection	Milligan, Lauren P.
17.	FL Department of Environmental Protection	Stahl, Chris
18.	FL Department of State	Jones, Ginny L.
19.	FL Department of State	Kammerer, Laura
20.	FL Department of State	McClarnon, Daniel
21.	FL Department of State	McManus, Alyssa
22.	FL Department of Transportation	Bixby, Marjorie
23.	FL Fish and Wildlife Conservation Commission	Gilbert, Terry
24.	FL Fish and Wildlife Conservation Commission	Gorham, Bonita
25.	FL Fish and Wildlife Conservation Commission	Poole, MaryAnn
26.	FL Fish and Wildlife Conservation Commission	Sanders, Scott
27.	Florida Inland Navigation District	* Mr. David Roach
28.	Florida's Turnpike Enterprise	Post, John
29.	Hillsborough County MPO	Blain, Wally
30.	Miccosukee Tribe of Indians of Florida	* The Honorable Mr. Colley Billie, Chairman
31.	Muscogee (Creek) Nation	* The Honorable Mr. George Tiger, Principal Chief
32.	National Marine Fisheries Service	Rydene, David A.
33.	National Marine Fisheries Service	Sramek, Mark
34.	National Park Service	Barnett, Anita
35.	Natural Resources Conservation Service	Robbins, Rick A.
36.	Poarch Band of Creek Indians	* The Honorable Mr. Buford Rolin, Chairman
37.	Seminole Nation of Oklahoma	* The Honorable Mr. Leonard M. Harjo, Principal Chief
38.	Seminole Tribe of Florida	Backhouse, Paul N.
39.	Seminole Tribe of Florida	Swing, Alison
40.	Seminole Tribe of Florida	* The Honorable Mr. James E. Billie, Chairman
41.	Seminole Tribe of Florida	York, Elliott
42.	Southwest Florida Water Management District	Higginbotham, Hank
43.	Southwest Florida Water Management District	O'Neil, Paul W.
44.	Tampa Bay Regional Planning Council	Cooper, Suzanne T.
45.	Tampa Bay Regional Planning Council	Meyer, John M.
46.	US Army Corps of Engineers	Barron, Robert B.
47.	US Army Corps of Engineers	Fellows, John
48.	US Army Corps of Engineers	Lips, Garrett
49.	US Coast Guard	Stratton, Gene
50.	US Department of Health and Human Services	* National Center for Environmental Health Centers for Disease Control and Prevention
51.	US Department of Housing and Urban Development	* Regional Environmental Officer
52.	US Department of Interior	* Bureau of Land Management, Eastern States Office
53.	US Department of Interior	Director, USGS-FISC
54.	US Environmental Protection Agency	Dominy, Madolyn
55.	US Fish and Wildlife Service	Monaghan, Jane

\* Hardcopy recipient



<b>Application for Federal Assistance SF-424</b>		Version 02
*1. Type of Submission: <input type="checkbox"/> Preapplication <input checked="" type="checkbox"/> Application <input type="checkbox"/> Changed/Corrected Application	*2. Type of Application    * If Revision, select appropriate letter(s) <input checked="" type="checkbox"/> New <input type="checkbox"/> Continuation                    *Other (Specify) _____ <input type="checkbox"/> Revision	
3. Date Received:		4. Applicant Identifier: FPID No. 430056-1-22-01
5a. Federal Entity Identifier:		*5b. Federal Award Identifier:
<b>State Use Only:</b>		
6. Date Received by State:		7. State Application Identifier:
<b>8. APPLICANT INFORMATION:</b>		
*a. Legal Name: FLORIDA DEPARTMENT OF TRANSPORTATION		
*b. Employer/Taxpayer Identification Number (EIN/TIN): 59-6001874		*c. Organizational DUNS: 8093971020000
<b>d. Address:</b>		
*Street 1:	<u>11201 N. McKinley Drive</u>	
Street 2:	<u>FDOT, District Seven</u>	
*City:	<u>Tampa</u>	
County:	<u>Hillsborough</u>	
*State:	<u>Florida</u>	
Province:	_____	
*Country:	_____	
*Zip / Postal Code	<u>33612-6456</u>	
<b>e. Organizational Unit:</b>		
Department Name: FDOT Intermodal Systems Development Department		Division Name: FDOT District Seven
<b>f. Name and contact information of person to be contacted on matters involving this application:</b>		
Prefix: <u>Mr.</u>	*First Name: <u>Ming</u>	
Middle Name: _____		
*Last Name: <u>Gao</u>		
Suffix: _____		
Title: <u>Intermodal Systems Development Manager</u>		
Organizational Affiliation:		
*Telephone Number: 813-975-6454		Fax Number: 813-975-6443
*Email: <u>ming.gao@dot.state.fl.us</u>		

<b>Application for Federal Assistance SF-424</b>	<b>Version 02</b>
<b>*9. Type of Applicant 1: Select Applicant Type:</b> A.State Government  Type of Applicant 2: Select Applicant Type:  Type of Applicant 3: Select Applicant Type:  *Other (Specify)	
<b>*10 Name of Federal Agency:</b> U.S. Department of Transportation	
<b>11. Catalog of Federal Domestic Assistance Number:</b> 20-205  CFDA Title: Planning and Construction	
<b>*12 Funding Opportunity Number:</b>   *Title:  	
<b>13. Competition Identification Number:</b>   Title:  	
<b>14. Areas Affected by Project (Cities, Counties, States, etc.):</b> Hillsborough County Unincorporated Hillsborough County, Gibsonton	
<b>*15. Descriptive Title of Applicant's Project:</b>  U.S. Highway 41/State Road 45 (U.S. 41/S.R. 54) from Kracker Avenue to south of S.R. 676 (Causeway Boulevard). The proposed project consists of the widening of U.S. 41 from a four-lane divided arterial to a six-lane divided arterial and the anticipated replacement of the existing U.S. 41 bridges (Bridge Nos. 100045 and 100107) over the Alafia River. The proposed project is intended to accommodate projected future traffic. Multi-modal improvements such as sidewalks, bicycle facilities, and transit accommodations will be considered as part of the project.The length of the project is approximately 6.9 miles along US 41, with	

limits from Kracker Avenue to south of S.R. 676 (Causeway Boulevard) in Hillsborough County.

OMB Number: 4040-0004  
Expiration Date: 01/31/2009

**Application for Federal Assistance SF-424**

Version 02

**16. Congressional Districts Of:**

\*a. Applicant: FL-011

\*b. Program/Project: FL-005

**17. Proposed Project:**

\*a. Start Date: 06-29-2011

\*b. End Date: Unknown

**18. Estimated Funding (\$):**

*a. Federal	_____	0
*b. Applicant	_____	0
*c. State	_____	\$1,116,000
*d. Local	_____	0
*e. Other	_____	0
*f. Program Income	_____	0
*g. TOTAL	_____	\$1,116,000

**\*19. Is Application Subject to Review By State Under Executive Order 12372 Process?**

- a. This application was made available to the State under the Executive Order 12372 Process for review on 09/19/2012
- b. Program is subject to E.O. 12372 but has not been selected by the State for review.
- c. Program is not covered by E. O. 12372

**\*20. Is the Applicant Delinquent On Any Federal Debt? (If "Yes", provide explanation.)**

Yes       No

21. \*By signing this application, I certify (1) to the statements contained in the list of certifications\*\* and (2) that the statements herein are true, complete and accurate to the best of my knowledge. I also provide the required assurances\*\* and agree to comply with any resulting terms if I accept an award. I am aware that any false, fictitious, or fraudulent statements or claims may subject me to criminal, civil, or administrative penalties. (U. S. Code, Title 218, Section 1001)

\*\* I AGREE

\*\* The list of certifications and assurances, or an internet site where you may obtain this list, is contained in the announcement or agency specific instructions

**Authorized Representative:**

Prefix: Mr.      \*First Name: Ming

Middle Name: \_\_\_\_\_

\*Last Name: Gao

Suffix: \_\_\_\_\_

\*Title: Intermodal Systems Development Manager

\*Telephone Number: 813-975-6454

Fax Number: 813-975-6443

\* Email: ming.gao@dot.state.fl.us

\*Signature of Authorized Representative:



\*Date Signed: 09/19/2012

Authorized for Local Reproduction

Standard Form 424 (Revised 10/2005)

Prescribed by OMB Circular A-102

**Application for Federal Assistance SF-424**

Version 02

**\*Applicant Federal Debt Delinquency Explanation**

The following should contain an explanation if the Applicant organization is delinquent of any Federal Debt.