



FDOT DISTRICT 7

US 41 (SR 45)

From Kracker Avenue to South of SR 676 (Causeway Boulevard)
Project Development and Environment (PD&E) Study
Work Program Item Segment No. 430056-1



Public Hearing Scrapbook

Held on Tuesday, January 26, 2016
Gardenville Recreation Center, Gibsonton, Florida

FINAL

Public participation was solicited without regard to race, color, national origin, age, sex, religion, disability or family status.



US 41 (SR 45)

From Kracker Avenue to South of SR 676 (Causeway Boulevard)
Project Development and Environment (PD&E) Study

CD of this Scrapbook, Graphic Displays, Handouts, and PowerPoint Presentation





US 41 (SR 45)

From Kracker Avenue to South of SR 676 (Causeway Boulevard)
Project Development and Environment (PD&E) Study

Contents



Introduction	4
Project and Public Hearing Location Map	5
Florida Administrative Register & Newspaper Advertisements	7-8
Newsletter, Comment Form & Speaker Request Card	10-12
Public Hearing Sign-In Sheets	14-16
Display Graphics	18-26
PowerPoint Presentation with Script	28-32
Exterior Sign Locations & Photos	34-36



US 41 (SR 45)

From Kracker Avenue to South of SR 676 (Causeway Boulevard)
Project Development and Environment (PD&E) Study

Introduction

INTRODUCTION

The Florida Department of Transportation (FDOT) conducted a Project Development and Environment (PD&E) study for proposed improvements to US 41 (SR 45) in southern Hillsborough County. The study limits are from Kracker Avenue to South of SR 676 (Causeway Boulevard). The total length of the project is approximately 7 miles. The purpose of this study is to evaluate alternative capacity and operational improvements to US 41. The project location map is shown on the next page.

The purpose of this public hearing scrapbook is to document the information that was presented at the hearing. This document includes the following information:

- Description of the proposed improvements
- Display graphics presented
- Citizen and FDOT/consultant sign-in sheets
- Newsletter and public hearing handouts
- Newspaper display advertisements
- PowerPoint presentation with script
- Photographs taken at the hearing

Also, a CD is included containing electronic files of this scrapbook as well as the PowerPoint presentation shown at the hearing and copies of the display boards.

BACKGROUND & PROJECT DESCRIPTION

The PD&E study documented the need for the project and presented the procedures used to develop and evaluate various improvement alternatives related to this facility. The highway is to be improved from an existing, four-lane divided rural and urban facility to a six-lane divided facility. Bridges over Bullfrog Creek and the Alafia River are recommended to be replaced. The proposed improvements will include construction of stormwater management and floodplain compensation ponds and intersection improvements, in addition to multimodal facilities (trail, pedestrian, bicycle, and transit accommodations).

US 41 is a major north-south arterial of regional significance that parallels Interstate 75 (I-75) and US 301 in Hillsborough County. Within the study area, US 41 plays a significant role in connecting southern Hillsborough County to the Tampa Bay region.

The purpose of the proposed project is to accommodate future traffic demands on US 41 due to growth within the project limits and surrounding areas. This corridor is projected to operate at level of service (LOS) F in the design year (2040) if no increase in capacity is provided. Other factors that support the need for the project include: regional connectivity, safety, consistency with transportation plans, emergency evacuation, and modal interrelationships.

PUBLIC HEARING

The public hearing was held on Tuesday, January 26, 2016, from 5:30 p.m. to 7:30 p.m. at the following location:

Gardenville Recreation Center
6219 Symmes Road
Gibsonton, Florida 33534

Prior to the hearing, a notice was published in the Florida Administrative Register on Tuesday, January 12, 2016. A run of paper display advertisement was published in two separate issues of the Tampa Tribune and Centro Mi Diario on Tuesday, January 5, 2016 and Friday, January 15, 2016. Copies of these advertisements are shown in this scrapbook.

Approximately 380 affected property owners, agencies, officials, and interested citizens were sent a newsletter invitation in accordance with the Department's procedures. Approximately 60 citizens attended the hearing. Copies of the sign-in sheets are included in this scrapbook. Prior to the hearing, one comment was received, and FDOT continued to receive comments until February 5, 2016. One written comment was received at the hearing. Comment forms submitted can be found in the Comments and Coordination Report.

The informal session of the public hearing was held from 5:30 p.m. to 6:30 p.m. The hearing venue was prepared as an open-house, during which citizens were given an opportunity to review a handout, various exhibits, and the study documents. Copies of the handouts and display boards can be found in this scrapbook. In addition, a project video (PowerPoint Presentation) ran continuously in one side of the room. Copies of the slides and script are included at the back of this scrapbook. FDOT and consultant representatives were available for one-on-one questions and answers. A court reporter was present throughout the hearing to verbally record comments as well.

The formal portion of the hearing was moderated by Mr. Kirk Bogen, PE, the FDOT District Seven Environmental Management Engineer, at 6:30 p.m. where members of the public could voice their opinions. His presentation covered the following topics:

- Description of the project and purpose of the hearing
- The exhibit with State and Federal laws cited
- Right of way acquisition information
- Methods for the public to provide comments

Following the formal presentation, attendees were given an opportunity to make oral statements for the record. Four people spoke publicly. Following this segment, the formal session was adjourned at approximately 6:45 p.m., and the informal session resumed until 7:30 p.m. A transcript of the oral presentation and all statements made to the court reporter are included in the study's *Final Comments & Coordination Report*.

In addition, representatives and table kiosks were set up for FDOT's right of way, access management, and safety. This was so the public could direct their comments directly with those areas.

Reports and other information available at the public hearing included:

- Air Quality Memorandum [Draft]
- Cultural Resource Assessment Survey (CRAS) Report Volume 1 of 2 [Final]
- Cultural Resource Assessment Survey (CRAS) Report Volume 2 of 2 [Final]
- Existing Bridge Typical Sections
- Existing Typical Sections
- Level I Contamination Screening Evaluation Report (CSER) [Draft]
- Location Hydraulics Memorandum [Draft]
- Noise Study Report [Draft]
- Pond Sizing Report [Draft]
- Preliminary Engineering Report [Draft]
- State Environmental Impact Report [Draft]
- Traffic Technical Memorandum [Final]
- Traffic Technical Memorandum Appendices [Final]
- Utility Assessment Package [Final]
- Wetland Evaluation and Biological Assessment Report [Draft]



US 41 (SR 45)

From Kracker Avenue to South of SR 676 (Causeway Boulevard)
Project Development and Environment (PD&E) Study

Project and Public Hearing Location Map





US 41 (SR 45)

From Kracker Avenue to South of SR 676 (Causeway Boulevard)
Project Development and Environment (PD&E) Study



Florida Administrative Register & Newspaper Advertisements



US 41 (SR 45)

From Kracker Avenue to South of SR 676 (Causeway Boulevard)
Project Development and Environment (PD&E) Study

Florida Administrative Register

Published in the Florida Administrative Register on Tuesday, January 12, 2016.

Florida Administrative Register

Volume 42, Number 7, January 12, 2016

If you are hearing or speech impaired, please contact the agency using the Florida Relay Service, 1(800)955-8771 (TDD) or 1(800)955-8770 (Voice). For more information, you may contact: Luana Kutz, (407)623-1070, lkutz@cilorlando.org.

FLORIDA DEVELOPMENTAL DISABILITIES COUNCIL. The Florida Developmental Disabilities Council, Inc. announces public meetings to which all persons are invited. **DATES AND TIMES:** January 20, 2016, 7:00 p.m. – 9:00 p.m., Committee/Council Mtg. Briefing; January 21, 2016, 8:00 a.m. – 4:00 p.m., Committee Meetings (go to www.fddc.org for specific Committee meetings times); January 22, 2016, 8:30 a.m. – 2:30 p.m., Full Council **PLACE:** Florida Hotel & Conference Center, 1500 Sand Lake Road, Orlando, FL 32809

GENERAL SUBJECT MATTER TO BE CONSIDERED: To discuss the general business of the FDDC Council Committees and Full Council.

Copies of the agendas may be obtained by contacting: Debra Dowds or Vanda Bowman at 1(800)580-7801 or 1(850)488-4180 or 124 Marriott Drive, Suite 203, Tallahassee, FL 32301 For more information, you may contact: Debra Dowds or Vanda Bowman at 1(800)580-7801 or 1(850)488-4180 or 124 Marriott Drive, Suite 203, Tallahassee, FL 32301.

FLORIDA SPORTS FOUNDATION

The Florida Sports Foundation Grant Committee announces a telephone conference call to which all persons are invited. **DATE AND TIME:** Tuesday, February 2, 2016, 10:00 a.m. **PLACE:** Conference call: 1(888)670-3525, participant code: 6565780871 then #

GENERAL SUBJECT MATTER TO BE CONSIDERED: To review and recommend funding for grants received by the January 10, 2016 grant deadline.

A copy of the agenda may be obtained by contacting: Lisa Osteen, Director of Marketing at losteen@flsports.com.

If any person decides to appeal any decision made by the Board with respect to any matter considered at this meeting or hearing, he/she will need to ensure that a verbatim record of the proceeding is made, which record includes the testimony and evidence from which the appeal is to be issued.

SUNSHINE STATE ONE CALL OF FLORIDA

The Sunshine State One Call of Florida, Inc., d/b/a Sunshine 811 announces a telephone conference call to which all persons are invited. **DATE AND TIME:** Tuesday, January 26, 2016, 1:30 p.m. – 4:00 p.m.

PLACE: Teleconference; call: 1(888)670-3525, enter participant passcode: 8567463178 then #

GENERAL SUBJECT MATTER TO BE CONSIDERED: New Director Orientation meeting. **Purpose:** To acquaint the recently elected directors with the Bylaws and Policies of Sunshine 811.

For more information, you may contact: Lori Budiani, Executive Assistant, (386)575-2002.

AMERICAN CONSULTING PROFESSIONALS - DEBORAH TURNER

The Florida Department of Transportation, District Seven announces a public meeting to which all persons are invited.

DATE AND TIMES: Tuesday, January 26, 2016: 5:30 p.m. – 7:30 p.m., Open House; 6:30 p.m., Formal Presentation, followed by a public comment period

PLACE: Gardenville Recreation Center, 6219 Symmes Road, Gibsonton, Florida 33534

GENERAL SUBJECT MATTER TO BE CONSIDERED:

You are invited to attend and participate in the Florida Department of Transportation (FDOT), District Seven public hearing for a Project Development and Environment (PD&E) study for proposed improvements to US 41 in Hillsborough County, Florida. This public hearing is being held to allow interested persons an opportunity to provide comments concerning the location, conceptual design, and social, economic, and environmental effects of widening US 41 from Kracker Avenue to south of SR 676 (Causeway Boulevard), a distance of approximately 7 miles. The widening of US 41 is proposed as a six-lane divided roadway with pedestrian and bicycle facilities.

Department representatives will be available at the public hearing beginning at 5:30 pm to answer questions and discuss the project informally. Draft project documents and other project related materials will be displayed, and a PowerPoint presentation will run continuously during the open house. At 6:30 pm, FDOT representatives will begin the formal portion of the hearing, which will provide an opportunity for attendees to make formal oral public comments. Following the formal portion of the hearing, the informal open house will resume and continue until 7:30 pm. A court reporter will be available to receive comments in a one-on-one setting. Persons wishing to submit written statements or other exhibits, in place of or in addition to oral statements, may do so at the hearing or by mailing them to Kirk Bogen, Environmental Management Engineer, FDOT, District Seven, 11201 N. McKinley Drive MS 7-500, Tampa, FL 33612-6456, or electronically to the project website at <http://active.fdot7studies.com/us41/kracker-to-sr676/>. All exhibits or statements must be postmarked or emailed no later than Friday, February 5, 2016 to become part of the official public hearing record.

Florida Administrative Register

Volume 42, Number 7, January 12, 2016

Draft project documents are available from January 5, 2016 to February 5, 2016 at the locations listed below and on the project website, <http://active.fdot7studies.com/us41/kracker-to-sr676/>:

- Riverview Branch Library, 10509 Riverview Drive, Riverview, FL 33578-4367; (business hours: Monday – Tuesday 10:00 a.m. – 8:00 p.m.; Wednesday – Saturday 10 am–6 pm)
- FDOT District Seven, 11201 N. McKinley Drive, Tampa, FL 33612; (Business Hours: Mon-Fri 8:00 a.m. – 5:00 p.m.)

Public participation is solicited without regard to race, color, national origin, age, sex, religion, disability or family status.

A copy of the agenda may be obtained by contacting: Kirk Bogen, P.E., Environmental Management Engineer, 11201 N. McKinley Drive, Tampa, FL 33612-6453, (813)975-6448 or 1(800)226-7220, or kirk.bogen@dot.state.fl.us.

Pursuant to the provisions of the Americans with Disabilities Act, any person requiring special accommodations to participate in this workshop/meeting is asked to advise the agency at least 7 days before the workshop/meeting by contacting: Christopher Speese, Public Involvement Coordinator, 11201 N. McKinley Drive, Tampa, FL 33612-6453, (813)975-6405 or 1(800)226-7220 or christopher.speese@dot.state.fl.us. Any persons who require translation services (free of charge) should also contact Christopher Speese seven (7) days before the hearing. If you are hearing or speech impaired, please contact the agency using the Florida Relay Service, 1(800)955-8771 (TDD) or 1(800)955-8770 (Voice).

For more information, you may contact: Kirk Bogen, P.E., Environmental Management Engineer, 11201 N. McKinley Drive, Tampa, FL 33612-6453, (813)975-6448 or 1(800)226-7220 or kirk.bogen@dot.state.fl.us.

INFINITE SOURCE COMMUNICATIONS GROUP, LLC The Florida Department of Transportation District Six announces a public meeting to which all persons are invited.

DATE AND TIME: Tuesday, January 26, 2016, 4:00 p.m. – 6:00 p.m.

PLACE: Winn Dixie Supermarket, 8710 SW 72 St., Miami, FL 33173

GENERAL SUBJECT MATTER TO BE CONSIDERED: The Florida Department of Transportation (FDOT) District Six will hold a public meeting for a roadway project along State Road (SR) 986/SW 72 Street/Sunset Drive from SW 87 Court to SW 84 Place, in Miami-Dade County, to discuss the project's scope of work. The project identification number is 427651-2-52-01. The meeting will begin as an open house, from 4:00 p.m. to 6:00 p.m. Graphic displays will be shown

during the meeting, and FDOT representatives will be available to discuss the project.

A copy of the agenda may be obtained by contacting: Public Information Specialist Rodolfo Roman at (305)470-5477, Rodolfo.Roman@dot.state.fl.us.

Pursuant to the provisions of the Americans with Disabilities Act, any person requiring special accommodations to participate in this workshop/meeting is asked to advise the agency at least 7 days before the workshop/meeting by contacting: Ivette Ruiz-Paz, FDOT, 1000 NW 111 Avenue, Miami, FL 33172, (305)470-5225, ivette.ruiz-paz@dot.state.fl.us. If you are hearing or speech impaired, please contact the agency using the Florida Relay Service, 1(800)955-8771 (TDD) or 1(800)955-8770 (Voice).

For more information, you may contact: Public Information Specialist Rodolfo Roman, (305)470-5477, Rodolfo.Roman@dot.state.fl.us.

**Section VII
Notice of Petitions and Dispositions
Regarding Declaratory Statements**

NONE

**Section VIII
Notice of Petitions and Dispositions
Regarding the Validity of Rules**

Notice of Petition for Administrative Determination has been filled with the Division of Administrative Hearings on the following rules:

NONE

Notice of Disposition of Petition for Administrative Determination has been filled with the Division of Administrative Hearings on the following rules:

NONE

**Section IX
Notice of Petitions and Dispositions
Regarding Non-rule Policy Challenges**

NONE

**Section X
Announcements and Objection Reports of**



US 41 (SR 45)

From Kracker Avenue to South of SR 676 (Causeway Boulevard)
Project Development and Environment (PD&E) Study

Newspaper Advertisements

Published in the Tampa Tribune and Centro mi Dario on Tuesday, January 5, 2016 and Friday, January 15, 2016.

LEGAL ADVERTISEMENT

FDOT US 41 PD&E Study from Kracker Avenue to South of SR 676 (Causeway Boulevard) Public Hearing
FDOT District Seven | WPI Segment No.: 430056-1
Hillsborough County

The Florida Department of Transportation (FDOT) invites you to attend and participate in a public hearing regarding the alternative capacity and operational improvements along US 41 for approximately 7 miles from Kracker Avenue to south of SR 676 (Causeway Boulevard) in Hillsborough County. The proposed project is intended to accommodate projected future traffic. Multi-modal improvements such as sidewalks, bicycle facilities, and transit accommodations will be considered as part of the project.

This public hearing is being held to allow interested persons the opportunity to provide comments concerning the location, conceptual design, and social, economic, and environmental effects of the proposed improvements.

Where: Gardenville Recreation Center
6219 Symmes Road
Gibsonton, Florida 33534

Date: Tuesday, January 26, 2016

Time: 5:30 p.m. - 7:30 p.m. Open House
6:30 p.m. Formal Presentation



Department representatives will be available at the public hearing beginning at 5:30 p.m. to answer questions and discuss the project informally. Draft project documents and other project related materials will be displayed and a PowerPoint presentation will run continuously during the open house. At 6:30 p.m., FDOT representatives will begin the formal portion of the hearing, which will provide an opportunity for attendees to make formal oral public comments. Following the formal portion of the hearing, the informal open house will resume and continue until 7:30 p.m. A court reporter will be available to receive comments in a one-on-one setting. Persons wishing to submit written statements or other exhibits, in place of or in addition to oral statements, may do so at the hearing or by mailing them to Kirk Bogen, Environmental Management Engineer, FDOT, District Seven, 11201 N. McKinley Drive MS 7-500, Tampa, FL 33612-6456, or electronically to the project website at <http://active.fdot7studies.com/us41/kracker-to-sr676/>. All exhibits or statements must be postmarked or emailed no later than **Friday, February 5, 2016** to become part of the official public hearing record.

Draft project documents will be available for public review from Tuesday, January 5, 2016 to Friday, February 5, 2016, at the locations listed below and on the project website, <http://active.fdot7studies.com/us41/kracker-to-sr676/>. For more information, please contact Kirk Bogen, Environmental Management Engineer, at (813) 975-6448, or kirk.bogen@dot.state.fl.us.

Riverview Branch Library 10509 Riverview Drive Riverview, Florida 33578 (813) 273-3652 Mon-Tues 10:00 a.m. - 8:00 p.m. Wed-Sat 10:00 a.m. - 6:00 p.m. Sunday Closed	FDOT District Seven Planning & Environmental Management Office 11201 N. McKinley Drive Tampa, FL 33612 (813) 975-6448 Mon-Fri 8:00 a.m. - 5:00 p.m. Saturday & Sunday Closed
--	--

Public participation is solicited without regard to race, color, national origin, age, sex, religion, disability or family status. Persons who require special accommodations under the Americans with Disabilities Act or persons who require translation service (free of charge) should contact Christopher Speese, Public Involvement Coordinator, at (813) 975-6405 or (800) 226-7220 at least seven (7) working days in advance of the hearing session.

430056 01/05/2016, 01/15/2016

The Tampa Tribune

LEGAL ADVERTISEMENT

FDOT Audiencia Pública Sober el Studio de US 41 Desde la Avenida Kracker Hasta el Sur de la SR 676 (Causeway Boulevard)
FDOT District Seven | WPI Segment No.: 430056-1 | El Condado de Hillsborough


El Departamento de Transporte de la Florida (FDOT) le invita a asistir y participar en una audiencia pública con respecto a la alternativa de capacidad y mejoras operativas a lo largo de la carretera US 41, esta alternativa es de aproximadamente 7 millas desde la Avenida Kracker a sur de la SR 676 (Causeway Boulevard) en el condado de Hillsborough. La propuesta del proyecto pretende acomodar el proyectado tráfico futuro. Mejoras multimodales como aceras, instalaciones para bicicletas, y el tránsito alojamiento serán consideradas como parte del proyecto.

Esta audiencia pública se llevará a cabo para permitir que las personas interesadas tengan la oportunidad de formular observaciones acerca de la ubicación, diseño conceptual y los efectos sociales, económicos y ambientales de las mejoras propuestas.

Dónde: Gardenville Centro Recreativo
6219 Symmes Road
Gibsonton, Florida 33534

Fecha: Martes, 26 de enero 2016

Horas: 5:30 p.m.-7:30 p.m. Casa Abierta
6:30 p.m. Presentación Formal



Representantes del Departamento estarán disponibles en la audiencia pública comenzando a las 5:30 p.m. para contestar preguntas y discutir el proyecto informalmente. Los documentos preliminares de los proyectos y otros proyectos relacionados se mostrarán en una presentación de PowerPoint se ejecutarán continuamente durante la jornada de puertas abiertas. A las 6:30 p.m., representantes del FDOT comenzarán la parte formal de la audiencia, que proporcionará una oportunidad para que los asistentes a hacer comentarios públicos orales formales. Después de la parte formal de la audiencia, la casa pública aficionará en forma informal y esta continuar hasta las 7:30 p.m. Un reportero de la corte estará disponible para recibir comentarios de uno por uno. Las personas que deseen presentar declaraciones escritas u otros objetos expuestos, en lugar de o además de por vía oral declaraciones, pueden hacerlo en la audiencia o por correo a Kirk Bogen, Ingeniero de Gestión Ambiental, FDOT, Distrito Siete, 11201 N. McKinley Drive MS 7-500, Tampa, FL 33612-6456, o por vía electrónica a la sitio web del proyecto <http://active.fdot7studies.com/us41/kracker-to-sr676/>. Todas las exposiciones o declaraciones deben de tener el sello postal o por correo electrónico a más tardar el Viernes, 05 de Febrero 2016 para formar parte del registro de la audiencia pública oficialmente.

Los documentos preliminares del proyecto estarán disponibles para la revisión pública del Martes, 05 de Enero 2016 al Viernes, 05 de Febrero 2016, en los lugares indicados a continuación y en la página web del proyecto, <http://active.fdot7studies.com/us41/kracker-to-sr676/>. Para obtener más información, póngase en contacto con Kirk Bogen, Ingeniero de Gestión Ambiental, en (813) 975-6448 o kirk.bogen@dot.state.fl.us.

Riverview Branch Library 10509 Riverview Drive Riverview, Florida 33578 (813) 273-3652 Lunes-Martes 10:00 a.m. - 8:00 p.m. Miércoles-Sábado 10:00 a.m. - 6:00 p.m. Domingo Closed	FDOT District Seven Planning & Environmental Management Office 11201 N. McKinley Drive Tampa, FL 33612 (813) 975-6448 Lunes-Viernes 8:00 a.m. - 5:00 p.m. Sábado & Domingo Closed
--	---

La participación pública es solicitada sin distinción de raza, color, origen nacional, edad, sexo, religión, discapacidad o situación familiar. Las personas que requieren acomodaciones especiales bajo el Americans with Disabilities Act o personas que requieren servicio de traducción (gratis) deben ponerse en contacto con Christopher Speese, Coordinador de Participación Pública, al (813) 975-6405 o al (800) 226-7220 al menos siete (7) días hábiles de anticipación a la sesión de audiencia.

430056 01/05/16, 01/15/16

The Centro mi Dario



US 41 (SR 45)

From Kracker Avenue to South of SR 676 (Causeway Boulevard)
Project Development and Environment (PD&E) Study



Newsletter, Comment Form & Speaker Request Card



US 41 (SR 45)

From Kracker Avenue to South of SR 676 (Causeway Boulevard)
Project Development and Environment (PD&E) Study



Florida Department of Transportation
District Seven
11201 N. McKinley Drive
MS 7-500
Tampa, FL 33612-6456

The newsletter was mailed on Tuesday, December 29, 2015 and distributed at the public hearing session.

The public hearing newsletter served as a property owner notice and an invitation to interested parties on the project mailing list.

REMAINING PD&E STUDY SCHEDULE	
Public Hearing	January 2016
Complete PD&E Study	Summer 2016

FUNDING SCHEDULE	
PHASE	FUNDING YEAR
Design	Not Currently Funded
Right of Way Acquisition	Not Currently Funded
Construction	Not Currently Funded

NOTICE OF PUBLIC HEARING

Date:
Tuesday, January 26, 2016

Place:
Gardenville Recreation Center
6219 Symmes Road
Gibsonton, FL 33534

Time:
5:30 pm - 7:30 pm Open House
6:30 pm Formal Presentation

Para Preguntas En Español

Si usted tiene preguntas o comentarios o si simplemente desea más información sobre este proyecto en Español, favor de ponerse en contacto con la señora Elba Lopez, al teléfono: (813) 975-6403, o correo electrónico: elba.lopez@dot.state.fl.us.

Right of Way Acquisition (ROW) Procedure

We understand that when a transportation project proposes the acquisition of private property, you may have questions and concerns. To better educate and inform you about the right of way acquisition process and your rights, the department has created real estate acquisition and relocation brochures. These brochures and other education materials will be available at the public hearing.

Copies of the brochures may also be found on our website:
<http://www.dot.state.fl.us/rightofway/Documents.shtm>

We are interested in hearing your concerns and answering your questions. We also encourage you to speak with the departments' Project Manager or a Right of Way Representative at your convenience.

Non-Discrimination Laws

Public participation is solicited without regard to race, color, national origin, age, sex, religion, disability or family status. Persons who require special accommodations under the Americans with Disabilities Act or persons who require translation services (free of charge) should contact Christopher Speese, Public Involvement Coordinator, at (813) 975-6405, or by email to: christopher.speese@dot.state.fl.us at least seven (7) days before the public hearing.



US 41 (SR 45)

From Kracker Avenue to South of SR 676 (Causeway Boulevard)
Project Development and Environment (PD&E) Study

WPI Segment No: 430056-1 | Hillsborough County, Florida | December 2015

The Public Hearing is being held in the following location:

Date: January 26, 2016

Place: Gardenville Recreation Center
6219 Symmes Road
Gibsonton, FL 33534

Time: 5:30 pm-7:30 pm | Open House
6:30 pm | Formal Presentation

WE WANT YOUR INPUT!

A successful project depends on the public's participation in the project's development.

To provide comments, ask questions, and make suggestions about the project contact:

Kirk Bogen, P.E.
Environmental Management Engineer
813-975-6448
800-226-7220

— Or —

Kris Carson
Public Information
813-975-6202
800-226-7220

Send written comments to:
Kirk Bogen, P.E.
Environmental Management Engineer
Florida Department of Transportation
District Seven
11201 N. McKinley Drive
MS 7-500
Tampa, FL 33612-6456

Email comments to:
kirk.bogen@dot.state.fl.us

You may submit written comments or other exhibits, in place of or in addition to oral comments, at the hearing or by mailing your comments to the address preprinted on the back of the attached comment form or enter them on the project website at <http://active.fdot7studies.com/us41/kracker-to-sr676/>. All comments or other exhibits must be postmarked no later than Friday, February 5, 2016 to become part of the official public hearing record.

Dear Property Owner or Interested Citizen:

You are invited to attend and participate in the Florida Department of Transportation (FDOT), District Seven public hearing for a Project Development and Environment (PD&E) study for proposed improvements to US 41 in Hillsborough County, Florida. This public hearing is being held to allow interested persons an opportunity to provide comments concerning the location, conceptual design, and social, economic, and environmental effects of widening US 41 from Kracker Avenue to south of SR 676 (Causeway Boulevard), a distance of approximately 7 miles. The widening of US 41 is proposed as a six lane divided roadway with pedestrian and bicycle facilities.

This letter serves as notice to property owners (pursuant to F.S.339.155) that all or a portion of their property is within 300 feet of the edge of right of way of the proposed project. However, this does not mean that all properties will be directly affected.

Department representatives will be available at the public hearing beginning at 5:30 pm to answer questions and discuss the project informally. Draft project documents and other project related materials will be displayed, and a PowerPoint presentation will run continuously during the open house. At 6:30 pm, FDOT representatives will begin the formal portion of the hearing, which will provide an opportunity for attendees to make formal oral public comments. Following the formal portion of the hearing, the informal open house will resume and continue until 7:30 pm. A court reporter will be available to receive comments in a one-on-one setting. Persons wishing to submit written statements or other exhibits, in place of or in addition to oral statements, may do so at the hearing or by mailing them to Kirk Bogen, Environmental Management Engineer, FDOT, District Seven, 11201 N. McKinley Drive MS 7-500, Tampa, FL 33612-6456, or electronically to the project website at <http://active.fdot7studies.com/us41/kracker-to-sr676/>. All exhibits or statements must be postmarked or emailed no later than Friday, February 5, 2016 to become part of the official public hearing record.

If you have questions about the project or the scheduled hearing, please contact:

Kirk Bogen, P.E., Environmental Management Engineer
(813) 975-6448
kirk.bogen@dot.state.fl.us

Sincerely,
Kirk Bogen, P.E.
Environmental Management Engineer



Draft project documents will be available for public review at the following locations from January 5, 2016 to February 5, 2016.

Riverview Branch Library
10509 Riverview Drive
Riverview, FL 33578-4367
Mon-Tue 10 a.m.-8 p.m.
Wed-Sat 10 a.m.-6 p.m.

FDOT District Seven
11201 N. McKinley Drive
Tampa, FL 33612
Mon-Fri 8 a.m.-5 p.m.

What is a Project Development and Environment (PD&E) Study?

A PD&E study is a comprehensive evaluation of social, cultural, economic and environmental effects associated with a proposed transportation improvement. This analysis enables the FDOT to reach a decision on the type, location and conceptual design of proposed improvements for US 41 to accommodate future traffic demand in a safe and efficient manner. It represents a combined effort by transportation and environmental professionals who analyze information and document the best alternative for a community's transportation needs.

The PD&E study efforts are accomplished by working in cooperation with other state/federal agencies and local governments. This coordination allows the FDOT to better determine the effects a transportation project will have on the natural and human environment. A State Environmental Impact Report (SEIR) is being prepared, which summarizes the analyses of potential effects to the social, cultural, natural and physical environment.

Project Description

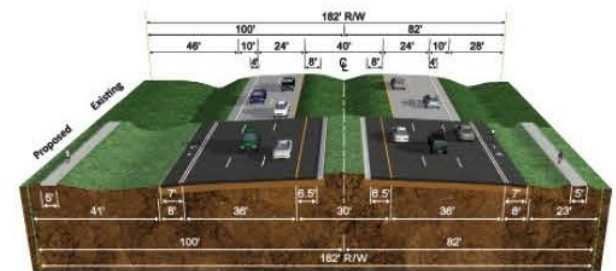
The FDOT is conducting a PD&E study to evaluate alternative capacity and operational improvements to US 41 from Kracker Avenue to south of Causeway Boulevard in Hillsborough County, a distance of approximately 7 miles. The highway is to be improved from an existing, four-lane divided rural and urban facility to a six-lane divided facility. Bridges over Bullfrog Creek and the Alafia River are recommended to be replaced. The proposed improvements will include construction of stormwater management and floodplain compensation ponds and intersection improvements, in addition to multimodal facilities (trail, pedestrian, bicycle and transit accommodations).

Project Purpose and Need

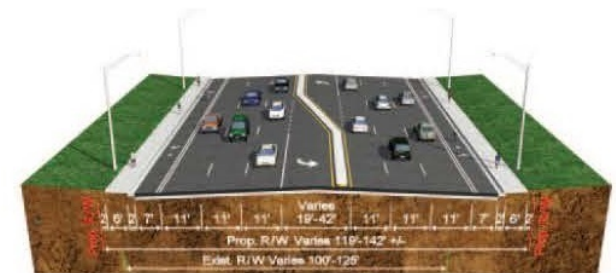
US 41 is a major north-south arterial of regional significance that parallels Interstate 75 (I-75) and US 301 in Hillsborough County. Within the study area, US 41 plays a significant role in connecting southern Hillsborough County to the Tampa Bay region. The purpose of the proposed project is to accommodate future traffic demands on US 41 due to growth within the project limits and surrounding areas. This corridor is projected to operate at level of service (LOS) F in the design year (2040) if no increase in capacity is provided. Other factors which support the need for the project include: regional connectivity, safety, consistency with transportation plans, emergency evacuation, and modal interrelationships.

Recommended Build Alternative

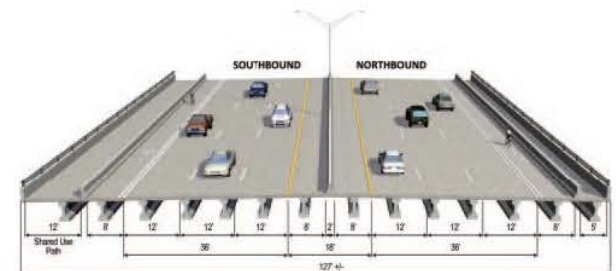
Recommended improvements include widening the existing highway to six lanes as well as intersection improvements, construction of stormwater management and floodplain compensation ponds and multimodal facilities. Proposed roadway typical sections include both suburban and urban typical sections. Additional right of way will be required in the north Gibsonton area for the Recommended Build Alternative. Alternatives to replace the bridges at Bullfrog Creek and the Alafia River have also been evaluated. Recommended typical sections are shown here. No future phases for this proposed project are included in FDOT's current adopted 5-year work program.



Proposed Typical Section Between Kracker Ave. and Palm Ave. (Proposed typical section between Alafia River Bridge and Denver Street is very similar to this one)



Proposed Typical Section from Palm Avenue to Gibsonton Drive (Proposed typical section from Gibsonton Drive to Lula Street is very similar to this one)



Proposed Bridge Typical Section at Alafia River

No-Build Alternative

In addition to the Recommended Build Alternative, the no-build, or do-nothing, alternative is considered a viable alternative and will remain so for the duration of this study. Under the no-build alternative, no improvements would be made to US 41 and only routine maintenance and preservation efforts would be made. Even though there are no design, right of way or construction costs associated with the no-build alternative, operating conditions are expected to worsen over time, while further increasing travel

delays and traffic congestion. This will create an unacceptable level of service and a delay in safety related improvements. Therefore, the no-build alternative would not meet the purpose and need for the proposed project. Although, the no-build alternative is not consistent with local transportation plans, this alternative forms the basis for comparison to the Recommended Build Alternative analyzed for this study. An Alternatives Comparison Matrix is included below.

US 41 PD&E Study Alternatives Comparison Matrix	No-Build Alternative	Build Alternative
Potential Number of Relocations		
Business Relocations	0	5
Residential Relocations	0	2
Potential Environmental Effects		
Right of Way Required for Roadway Improvements (Acres)	0	4.28
Stormwater/Floodplain Compensation Ponds (Acres)	0	40.5
Archaeological/Historic Sites (Potential) ¹	None	Low
Noise Impacts (Number of Sites) ²	45	57
Wetlands and Surface Waters Affected (Acres)	0	3.41
Essential Fish Habitat (Acres)	0	2.39
Floodplain Encroachment (Acres)	0	12.72
Threatened and Endangered Species (Involvement)	None	Low
Contamination Sites (Involvement)	None	Moderate
Estimated Costs (\$millions)		
Construction of Roadway, Bridges and Ponds	0	\$109.86
Right of Way Acquisition for Roadway	0	\$14.00
Right of Way Acquisition for Stormwater Ponds & Floodplain Comp.	0	\$16.96
Wetlands Mitigation ³	0	\$0.87
Engineering Design & Construction Inspection (20%)	0	\$21.97
Preliminary Estimate of Total Costs (\$millions)	0	\$163.66

Notes ¹ Sites on or eligible for listing on the National Register of Historic Places
² Sites with noise levels equal to or higher than the Federal Highway Administration's Noise Abatement Criteria
³ Based on an average mitigation cost of \$150,000/acre

The newsletter was mailed on Tuesday, December 29, 2015 and distributed at the public hearing session.

The public hearing newsletter served as a property owner notice and an invitation to interested parties on the project mailing list.



US 41 (SR 45)

From Kracker Avenue to South of SR 676 (Causeway Boulevard)
Project Development and Environment (PD&E) Study



Public Hearing Sign-In Sheets



US 41 (SR 45)

From Kracker Avenue to South of SR 676 (Causeway Boulevard)
Project Development and Environment (PD&E) Study

Public Hearing Sign-in Sheets

FDOT US 41 (SR 45) From Kracker Avenue to South of SR 676 (Causeway Boulevard) Project Development and Environment (PD&E) Study

Tuesday, January 26, 2016
Gardenville Recreation Center | 6219 Symmes Road, Gibsonton, FL, 33534

Public Hearing Sign-In

NAME (Please Print)	Please Select One					MAILING ADDRESS (Please Print)
	Area Resident or Visitor	Elected Official	Federal/State Agency	Regional/Local Agency	Other	
1 Cindy Dyer	R					6201 Estelle Ave Gib. 33534
2 William Dyer	R					6201 Estelle Ave Gibsonton 33534
3 Rosemary Rico/Adoq	R					12045 W. S. Hwy 41 S.
4 m						
5 Anna Kucand	R					6121 Cliff Lake Gibsonton
6 TOMY THOMAS						11210 US Hwy 41 South Gibsonton
7 Ronnie Chancy	R					10508 Symmes Rd. Riverwood, FL 33578
8 Scott Henderson	R					11534 Sally Court - Gibsonton, FL 33534
9 SUOT BENNETT					X	300 PVE ST. CINCINNATI, OH 45202
10 GREGORY WYNN					X	HCSO

Public participation is solicited without regard to race, color, national origin, age, sex, religion, disability or family status. Persons who require special accommodations under the Americans with Disabilities Act or persons who require translation services (free of charge) should contact Christopher Speese, Public Involvement Coordinator, at (813) 975-6405 or (800) 226-7220 at least seven (7) working days in advance of the hearing.

FDOT US 41 (SR 45) From Kracker Avenue to South of SR 676 (Causeway Boulevard) Project Development and Environment (PD&E) Study

Tuesday, January 26, 2016
Gardenville Recreation Center | 6219 Symmes Road, Gibsonton, FL, 33534

Public Hearing Sign-In

NAME (Please Print)	Please Select One					MAILING ADDRESS (Please Print)
	Area Resident or Visitor	Elected Official	Federal/State Agency	Regional/Local Agency	Other	
1 Bibi Coluccio	✓					
2 TIM HOLT	✓					
3 Bill & Jan Powell	✓					11579 Corwin St 33534
4 Frank Z...	✓					11825 W. S. 41
5 Roy						11210 W. S. Hwy 41 South
6 Jay Small					✓	225 E Robinson St. 32804
7 Robert G Wolf	✓					PO Box 164 33534
8 MAGED BARSOUM	✓					10037 US 41 Gibsonton 33534
9 William McW	✓					10015 Hwy 41 Gibsonton
10 Mark Scime	✓					10159 US Hwy 41 S 6b 33534

Public participation is solicited without regard to race, color, national origin, age, sex, religion, disability or family status. Persons who require special accommodations under the Americans with Disabilities Act or persons who require translation services (free of charge) should contact Christopher Speese, Public Involvement Coordinator, at (813) 975-6405 or (800) 226-7220 at least seven (7) working days in advance of the hearing.

FDOT US 41 (SR 45) From Kracker Avenue to South of SR 676 (Causeway Boulevard) Project Development and Environment (PD&E) Study

Tuesday, January 26, 2016
Gardenville Recreation Center | 6219 Symmes Road, Gibsonton, FL, 33534

Public Hearing Sign-In

NAME (Please Print)	Please Select One					MAILING ADDRESS (Please Print)
	Area Resident or Visitor	Elected Official	Federal/State Agency	Regional/Local Agency	Other	
1 Bobby Ramey	✓					1115 Steele 10159 US Hwy 41 S Gibsonton 33534
2 Cecilia Gayle				✓		601 E. Kennedy Blvd. 20th Floor
3 Jess Collister				✓		10014 H Dale Hwy #201 Tampa FL 33618
4 Leslie Russo				✓		10014 N. Dale Hwy #201 Tampa FL 33618
5 Louis Mastretta						4109 S 50th St Tampa
6 JOHN M. ATKINSON	✓					4701 S. 50th St TAMPA 33619
7 Anjelica Carranza	✓					6002 Marilla Ave Gibsonton 33534
8 Mario Carranza	✓					" "
9 Jim Graf					✓	14811 Grandway Court, W. Gibsonton, FL 33578
10 Patrick Munn	✓					6007 Estelle Ave. Gib 33534

Public participation is solicited without regard to race, color, national origin, age, sex, religion, disability or family status. Persons who require special accommodations under the Americans with Disabilities Act or persons who require translation services (free of charge) should contact Christopher Speese, Public Involvement Coordinator, at (813) 975-6405 or (800) 226-7220 at least seven (7) working days in advance of the hearing.

FDOT US 41 (SR 45) From Kracker Avenue to South of SR 676 (Causeway Boulevard) Project Development and Environment (PD&E) Study

Tuesday, January 26, 2016
Gardenville Recreation Center | 6219 Symmes Road, Gibsonton, FL, 33534

Public Hearing Sign-In

NAME (Please Print)	Please Select One					MAILING ADDRESS (Please Print)
	Area Resident or Visitor	Elected Official	Federal/State Agency	Regional/Local Agency	Other	
1 Absolute Marine						
2 Don Leslie Price	R					10821 S 71st St 4807 50th St FL 4803 50 South
3 DAVID STACKEY	R					
4 ROBERT FREDERICK Mosaic	✓					
5 PAUL SAMUELS - MOSAIC	✓					
6 Cindi Durr	✓					6007 Estelle Ave Gibsonton, FL 33534
7 Donna Garga	R					6106 Anna Ave
8 Jim Garga	R					6106 Anna Ave
9 CAROL PHILIPS	R					Box 304 - Gibsonton, FL
10 Buddy Harwell	R					PO Box 297 Gibsonton FL 33571
11 Lewis Carlisi					✓	POB. 17938 Tampa, FL 33682

Public participation is solicited without regard to race, color, national origin, age, sex, religion, disability or family status. Persons who require special accommodations under the Americans with Disabilities Act or persons who require translation services (free of charge) should contact Christopher Speese, Public Involvement Coordinator, at (813) 975-6405 or (800) 226-7220 at least seven (7) working days in advance of the hearing.



US 41 (SR 45)

From Kracker Avenue to South of SR 676 (Causeway Boulevard)
Project Development and Environment (PD&E) Study

Public Hearing Sign-in Sheets

FDOT US 41 (SR 45) From Kracker Avenue to South of SR 676 (Causeway Boulevard) Project Development and Environment (PD&E) Study

Tuesday, January 26, 2016
Gardenville Recreation Center | 6219 Symmes Road, Gibsonton, FL, 33534

Public Hearing Sign-In

NAME (Please Print)	Please Select One					MAILING ADDRESS (Please Print)
	Area Resident or Visitor	Elected Official	Federal/State Agency	Regional/Local Agency	Other	
1 HENRY DEL ORENDOCH					<input checked="" type="checkbox"/>	P.O. BOX 66507 ST. PETERS BEACH FL. 33536
2 NIKA FORSTER MARIC					<input checked="" type="checkbox"/>	13820 CIRCA CROSSING DR LITHIA FL 33547
3 Brent Simon	<input checked="" type="checkbox"/>					5945 FLORIDA AVE New Port Richey, FL 34653
4 KEN HOPE & MARIK HOPE	<input checked="" type="checkbox"/>					PO Box 2850, River View FL 33568
5 Gene Gillette	<input checked="" type="checkbox"/>					9910 Maggie St. Gibsonton
6 Brenna Casper-Fuchs	<input checked="" type="checkbox"/>					//
7 John Kincaid	<input checked="" type="checkbox"/>					PO Box 897 Gibsonton, FL 33534
8 Charlotte & Alan Clark	<input checked="" type="checkbox"/>					PO Box 965, Gibsonton, FL 33534
9 Olivia Ferdinansen	<input checked="" type="checkbox"/>					PO Box 97 Gibsonton, FL 33534
10						

Public participation is solicited without regard to race, color, national origin, age, sex, religion, disability or family status. Persons who require special accommodations under the Americans with Disabilities Act or persons who require translation services (free of charge) should contact Christopher Speese, Public Involvement Coordinator, at (813) 975-6405 or (800) 226-7220 at least seven (7) working days in advance of the hearing.

FDOT US 41 (SR 45) From Kracker Avenue to South of SR 676 (Causeway Boulevard) Project Development and Environment (PD&E) Study

Tuesday, January 26, 2016
Gardenville Recreation Center | 6219 Symmes Road, Gibsonton, FL, 33534

Public Hearing Sign-In

NAME (Please Print)	Please Select One					MAILING ADDRESS (Please Print)
	Area Resident or Visitor	Elected Official	Federal/State Agency	Regional/Local Agency	Other	
1 MARC LESLIE	<input checked="" type="checkbox"/>					11349 US Hwy 4 (South Gibsonton) - 33534
2 Jersey Harburg	<input checked="" type="checkbox"/>					11550 US Hwy 41 Gibsonton, 33534
3 Amanda Marcoviti	<input checked="" type="checkbox"/>					6120 Palm Ave Gibsonton FL 33534
4 Frederick Williams	<input checked="" type="checkbox"/>					6101 Anna Avenue Gibsonton 33534
5 Robert O Muddy	<input checked="" type="checkbox"/>					16118 Pine St Gibsonton FL 33534
6						
7						
8						
9						
10						

Public participation is solicited without regard to race, color, national origin, age, sex, religion, disability or family status. Persons who require special accommodations under the Americans with Disabilities Act or persons who require translation services (free of charge) should contact Christopher Speese, Public Involvement Coordinator, at (813) 975-6405 or (800) 226-7220 at least seven (7) working days in advance of the hearing.

FDOT US 41 (SR 45) From Kracker Avenue to South of SR 676 (Causeway Boulevard) Project Development and Environment (PD&E) Study

Tuesday, January 26, 2016
Gardenville Recreation Center | 6219 Symmes Road, Gibsonton, FL, 33534

Public Hearing Sign-In

NAME (Please Print)	Please Select One					MAILING ADDRESS (Please Print)
	Area Resident or Visitor	Elected Official	Federal/State Agency	Regional/Local Agency	Other	
1 ROBERT MILIC	<input checked="" type="checkbox"/>					MILIC@TAMPALQUIDATION.COM
2 John V Vogel						12014 North St Gibsonton
3						
4						
5						
6						
7						
8						
9						
10						

Public participation is solicited without regard to race, color, national origin, age, sex, religion, disability or family status. Persons who require special accommodations under the Americans with Disabilities Act or persons who require translation services (free of charge) should contact Christopher Speese, Public Involvement Coordinator, at (813) 975-6405 or (800) 226-7220 at least seven (7) working days in advance of the hearing.



US 41 (SR 45)

From Kracker Avenue to South of SR 676 (Causeway Boulevard)
Project Development and Environment (PD&E) Study

Public Hearing Sign-in Sheets

FDOT US 41 (SR 45) From Kracker Avenue to South of SR 676 (Causeway Boulevard) Project Development and Environment (PD&E) Study	
Tuesday, January 26, 2016 Gardenville Recreation Center 6219 Symmes Road, Gibsonton, FL, 33534	
Public Hearing Sign-In	STAFF ONLY
NAME (Please Print)	DEPARTMENT (Please Print)
1 Larry Weatherby	American Consulting Engineers
2 Asjita Guba	American Consulting Engineers
3 Jeff Novotny	American Consulting Eng.
4 Chris Salicco	American
5 Dana Hilton	American
6 DAVID GAYMAN	FDOT Access Mgmt
7 JACKIE FERNANDEZ	FDOT ROW
8 Rob Colacaro	_____
9 Zenia Gallo	FDOT ROW
10 Chris Speese	FDOT EMO

Public participation is solicited without regard to race, color, national origin, age, sex, religion, disability or family status. Persons who require special accommodations under the Americans with Disabilities Act or persons who require translation service (free of charge) should contact Christopher Speese, Public Involvement Coordinator, at (813) 975-6405 or (800) 226-7220 at least seven (7) working days in advance of the hearing.

FDOT US 41 (SR 45) From Kracker Avenue to South of SR 676 (Causeway Boulevard) Project Development and Environment (PD&E) Study	
Tuesday, January 26, 2016 Gardenville Recreation Center 6219 Symmes Road, Gibsonton, FL, 33534	
Public Hearing Sign-In	STAFF ONLY
NAME (Please Print)	DEPARTMENT (Please Print)
1 Kris Carsch	PIO
2 John L. FOLEY	Access Mgmt
3 Rob Rhinesmith	EMO
4 Kirk Adam	HDR GEC
5 Kirk Bogen	EMO
6 ED MCKINNEY	PLEMO
7	
8	
9	
10	

Public participation is solicited without regard to race, color, national origin, age, sex, religion, disability or family status. Persons who require special accommodations under the Americans with Disabilities Act or persons who require translation service (free of charge) should contact Christopher Speese, Public Involvement Coordinator, at (813) 975-6405 or (800) 226-7220 at least seven (7) working days in advance of the hearing.



US 41 (SR 45)

From Kracker Avenue to South of SR 676 (Causeway Boulevard)
Project Development and Environment (PD&E) Study



Display Graphics



US 41 (SR 45)

From Kracker Avenue to South of SR 676 (Causeway Boulevard)
Project Development and Environment (PD&E) Study



US 41 (SR 45)

From Kracker Avenue to South of SR 676 (Causeway Boulevard)
Project Development and Environment (PD&E) Study
Work Program Item Segment No. 430056-1



WELCOME

to the Public Hearing for the US 41 (SR 45)
From Kracker Avenue to South of SR 676 (Causeway Boulevard)
Project Development and Environment (PD&E) Study

MEETING DATE & LOCATION

Tuesday, January 26, 2016
5:30 p.m. - 7:30 p.m. Open House | 6:30 p.m. Formal Presentation

Gardenville Recreation Center
6219 Symmes Road
Gibsonton, FL 33534

Public participation is solicited without regard to race, color, national origin, age, sex, religion, disability or family status.

HILLSBOROUGH COUNTY | ETDM PROJECT NO. 5180

PUBLIC HEARING
JANUARY 26, 2016



US 41 (SR 45)

From Kracker Avenue to South of SR 676 (Causeway Boulevard)
Project Development and Environment (PD&E) Study
Work Program Item Segment No. 430056-1

FEDERAL AND STATE REQUIREMENTS

Requirement	Description
FEDERAL REQUIREMENTS	
MAP-21	Moving Ahead for Progress in the 21st Century Act (2012)
23 Code of Federal Regulations (CFR), Chapter I, Part 450	Planning Assistance and Standards
23 CFR, Part 771, Section 771.111	Environmental Impact and Related Procedures - Early Coordination, Public Involvement, and Project Development
40 CFR, Chapter I, Part 93.105	Determining Conformity of Federal Actions to State or Federal Implementation Plans
40 CFR, Volume 33, Chapter V, Parts 1500-1508	Council on Environmental Quality Regulations (NEPA Requirements)
49 CFR, Subtitle A, Part 24	Uniform Relocation Assistance and Real Property Acquisition Policies Act
23 United States Code (USC), Section 109(h)	Highways - Economic, Social, and Environmental Effects
23 USC, Section 128	Public Hearings
23 USC, Section 135	Statewide Planning
23 USC, Section 139	Efficient Environmental Reviews for Project Decision making
42 USC, Chapter 126, Section 12101	Americans with Disabilities Act of 1990, Titles I and V
42 USC, Subchapter V, Sections 20005-2000d-7	Public Health and Welfare - Title VI of the 1964 Civil Rights Act and Related Statutes
42 USC, Title 42, Chapter 55, Section 4321	National Environmental Policy Act of 1969 (NEPA)
Executive Order 12898	Environmental Justice - Avoidance of actions that can cause disproportionately high impacts on minority and low income populations
Executive Order 13166	Improving Access to Devices for Persons with Limited English Proficiency (LEP)
FHWA Technical Advisory 6640.8A	Guidance for preparing and processing Environmental and Section 4(f)
STATE REQUIREMENTS	
Florida Statute 120.525	Meetings, Hearings, and Workshops
Florida Statute 286.011	Government in the Sunshine Law
Florida Statute 335.199	Transportation Projects Modifying Access to Adjacent Property
Florida Statute 339.135	Public Hearings during the development of the Florida Transportation Plan
Florida Statute 339.155	Transportation Planning
Florida Statute 339.175	Public Transportation Finance and Planning, Metropolitan Planning Organization
Florida Statute 335.02(1)	Public Transportation, State Highway System
Florida Statute 479.106, Amended	Outdoor Advertising Signs/Noise-Attenuation Barrier
Florida Statute 163.3181(2)	Public Participation in the Comprehensive Planning Process; Intent, Alternative Dispute Resolution

This Public Hearing was advertised in the Tampa Tribune and Centro Mi Diario on Tuesday, January 5, 2016 and Friday, January 15, 2016 and the Florida Administrative Register on Tuesday, January 12, 2016.

HILLSBOROUGH COUNTY | ETDM PROJECT NO. 5180

PUBLIC HEARING
JANUARY 26, 2016



US 41 (SR 45)

From Kracker Avenue to South of SR 676 (Causeway Boulevard)
Project Development and Environment (PD&E) Study



US 41 (SR 45)

From Kracker Avenue to South of SR 676 (Causeway Boulevard)
Project Development and Environment (PD&E) Study
Work Program Item Segment No. 430056-1

PD&E STUDY SCHEDULE AND FUNDING

REMAINING PD&E STUDY SCHEDULE	
Public Hearing	January 2016
Complete PD&E Study	Summer 2016

FUNDING SCHEDULE	
Per Adopted Work Program FY 2016-2020	
PHASE	FUNDING YEAR
Design	Not Currently Funded
Right of Way Acquisition	Not Currently Funded
Construction	Not Currently Funded

HILLSBOROUGH COUNTY | ETDM PROJECT NO. 5180

PUBLIC HEARING
JANUARY 26, 2016



US 41 (SR 45)

From Kracker Avenue to South of SR 676 (Causeway Boulevard)
Project Development and Environment (PD&E) Study
Work Program Item Segment No. 430056-1

EVALUATION MATRIX

US 41 PD&E Study Alternatives Comparison Matrix	No-Build Alternative	Build Alternative
Potential Number of Relocations		
Business Relocations	0	5
Residential Relocations	0	2
Potential Environmental Effects		
Right of Way Required for Roadway Improvements (Acres)	0	4.28
Stormwater/Floodplain Compensation Ponds (Acres)	0	40.5
Archaeological/Historic Sites (Potential) ¹	None	Low
Noise Impacts (Number of Sites) ²	45	57
Wetlands and Surface Waters Affected (Acres)	0	3.41
Essential Fish Habitat (Acres)	0	2.39
Floodplain Encroachment (Acres)	0	12.72
Threatened and Endangered Species (Involvement)	None	Low
Contamination Sites (Involvement)	None	Moderate
Estimated Costs (\$millions)		
Construction of Roadway, Bridges and Ponds	0	\$109.86
Right of Way Acquisition for Roadway	0	\$14.00
Right of Way Acquisition for Stormwater Ponds & Floodplain Comp.	0	\$16.96
Wetlands Mitigation ³	0	\$0.87
Engineering Design & Construction Inspection (20%)	0	\$21.97
Preliminary Estimate of Total Costs (\$millions)	0	\$163.66

Notes ¹ Sites on or eligible for listing on the National Register of Historic Places
² Sites with noise levels equal to or higher than the Federal Highway Administration's Noise Abatement Criteria
³ Based on average mitigation cost of \$150,000/acre

HILLSBOROUGH COUNTY | ETDM PROJECT NO. 5180

PUBLIC HEARING
JANUARY 26, 2016



US 41 (SR 45)

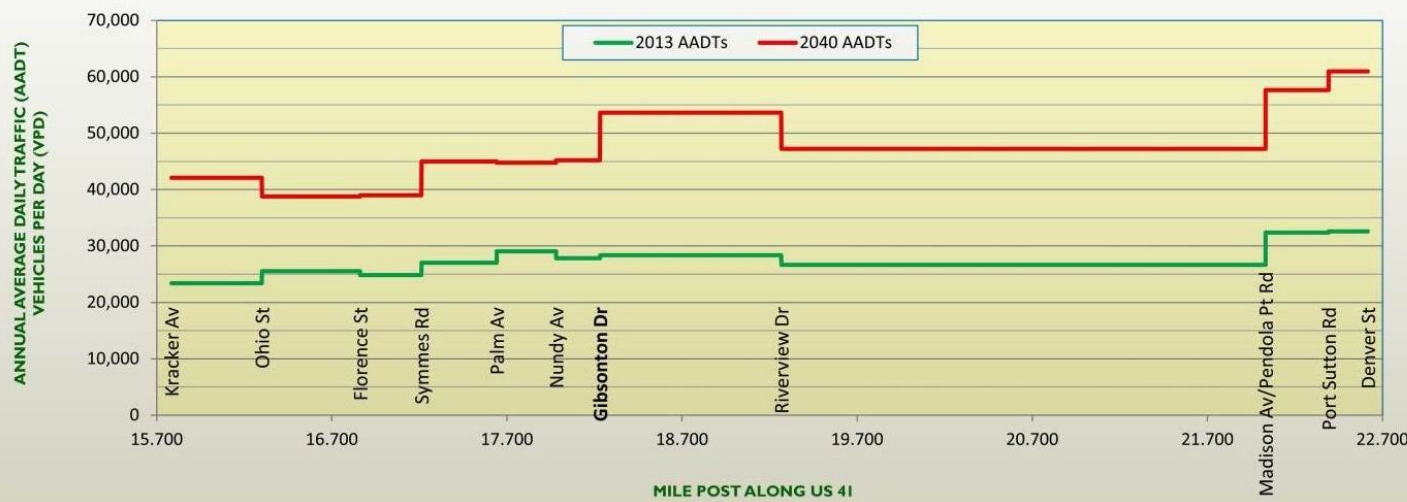
From Kracker Avenue to South of SR 676 (Causeway Boulevard)
Project Development and Environment (PD&E) Study



US 41 (SR 45)

From Kracker Avenue to South of SR 676 (Causeway Boulevard)
Project Development and Environment (PD&E) Study
Work Program Item Segment No. 430056-1

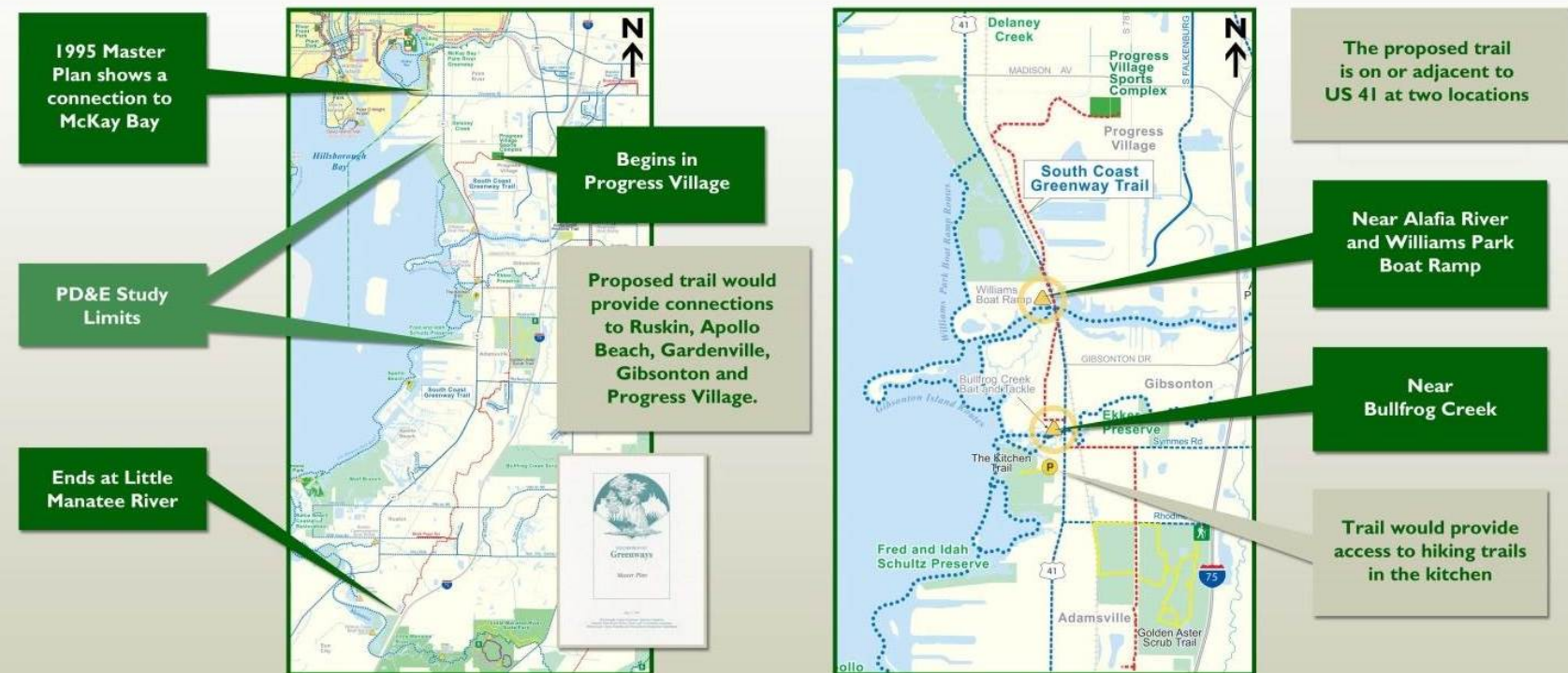
GRAPHICAL COMPARISON OF EXISTING AND FUTURE ANNUAL AVERAGE DAILY TRAFFIC



US 41 (SR 45)

From Kracker Avenue to South of SR 676 (Causeway Boulevard)
Project Development and Environment (PD&E) Study
Work Program Item Segment No. 430056-1

PROPOSED SOUTH COAST GREENWAY



HILLSBOROUGH COUNTY | ETDM PROJECT NO. 5180

PUBLIC HEARING
JANUARY 26, 2016



US 41 (SR 45)

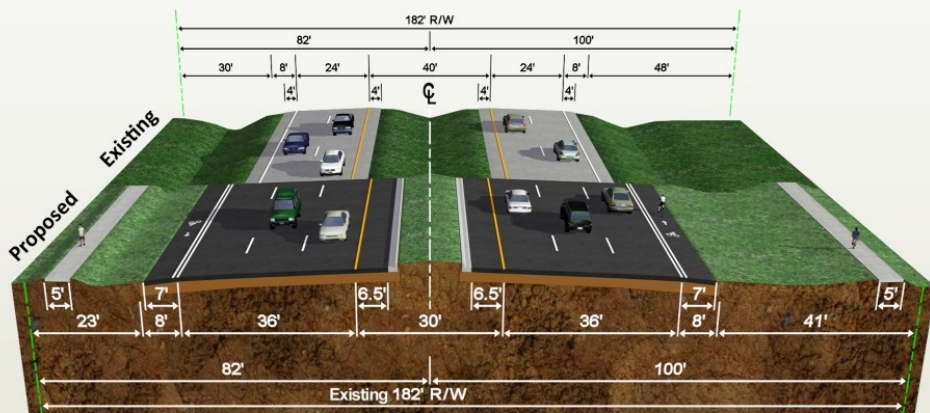
From Kracker Avenue to South of SR 676 (Causeway Boulevard)
Project Development and Environment (PD&E) Study



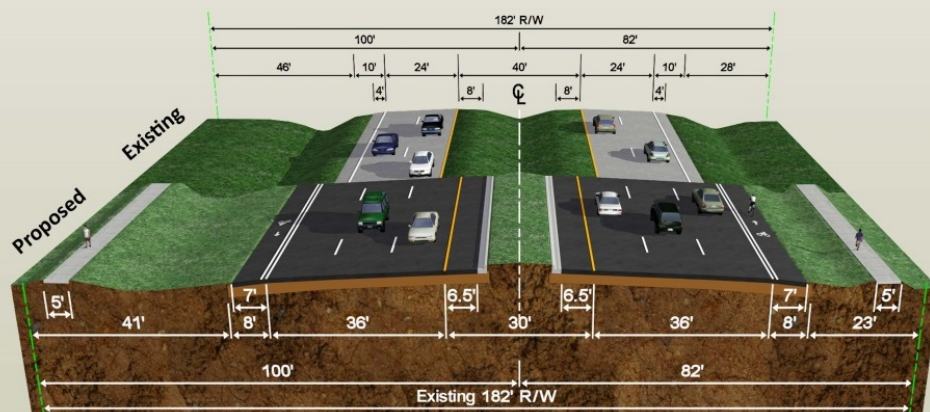
US 41 (SR 45)

From Kracker Avenue to South of SR 676 (Causeway Boulevard)
Project Development and Environment (PD&E) Study
Work Program Item Segment No. 430056-1

PROPOSED SUBURBAN TYPICAL SECTIONS (DESIGN SPEED = 50 MPH)



BETWEEN ALAFIA RIVER BRIDGE AND DENVER STREET
(NEAR THE NORTH END OF THE PROJECT)



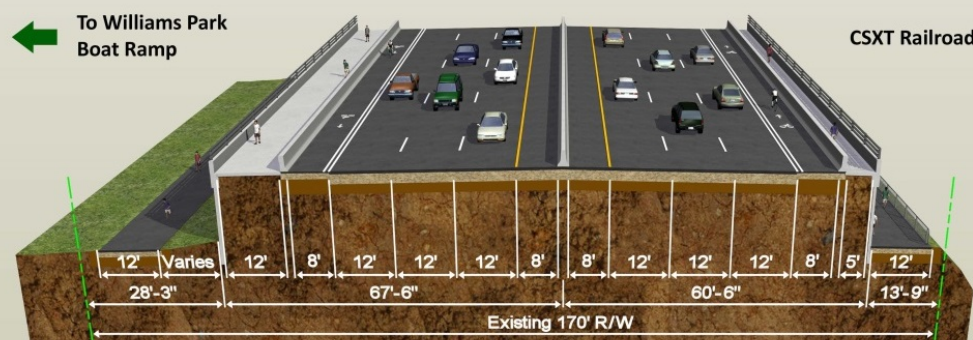
BETWEEN KRACKER AVENUE AND PALM AVENUE
(NEAR THE SOUTH END OF THE PROJECT)



US 41 (SR 45)

From Kracker Avenue to South of SR 676 (Causeway Boulevard)
Project Development and Environment (PD&E) Study
Work Program Item Segment No. 430056-1

PROPOSED TYPICAL SECTION NORTH OF ALAFIA RIVER BRIDGE



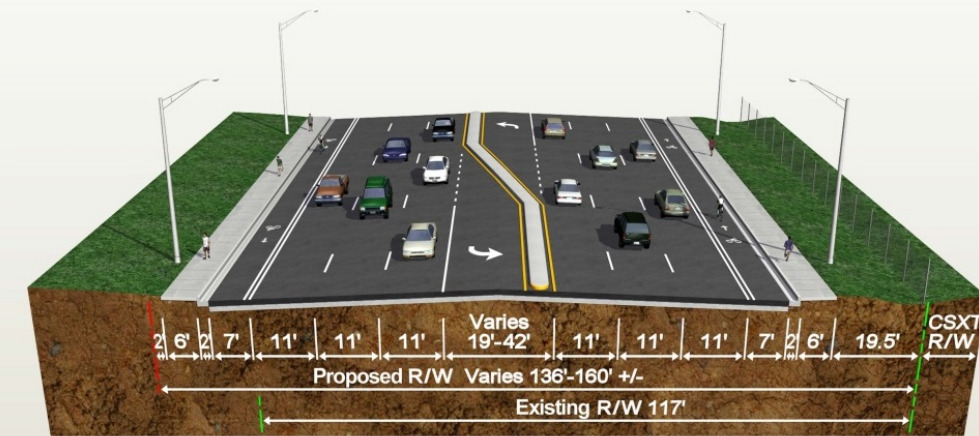
NORTH APPROACH TO THE BRIDGE, LOOKING NORTH ALONG US 41



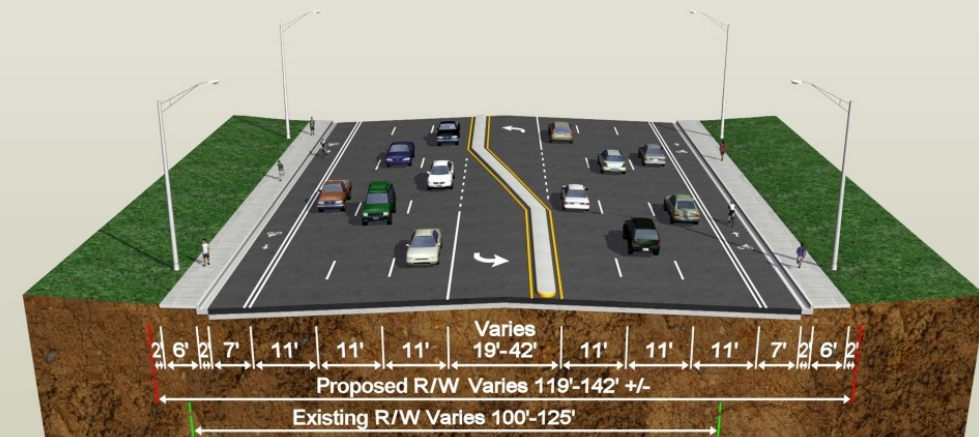
US 41 (SR 45)

From Kracker Avenue to South of SR 676 (Causeway Boulevard)
Project Development and Environment (PD&E) Study
Work Program Item Segment No. 430056-1

PROPOSED URBAN TYPICAL SECTIONS (DESIGN SPEED = 45 MPH)



FROM GIBSONTON DRIVE TO LULA STREET



FROM PALM AVENUE TO GIBSONTON DRIVE

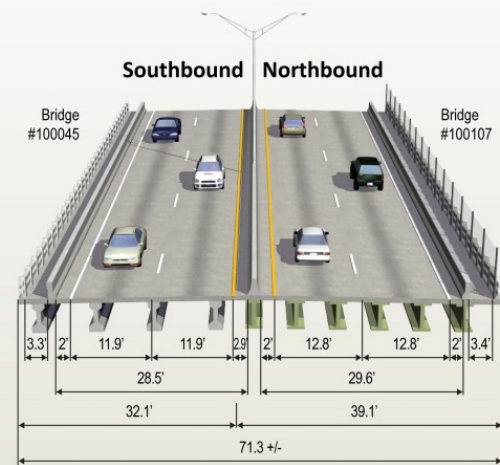
US 41 (SR 45)

From Kracker Avenue to South of SR 676 (Causeway Boulevard)
Project Development and Environment (PD&E) Study

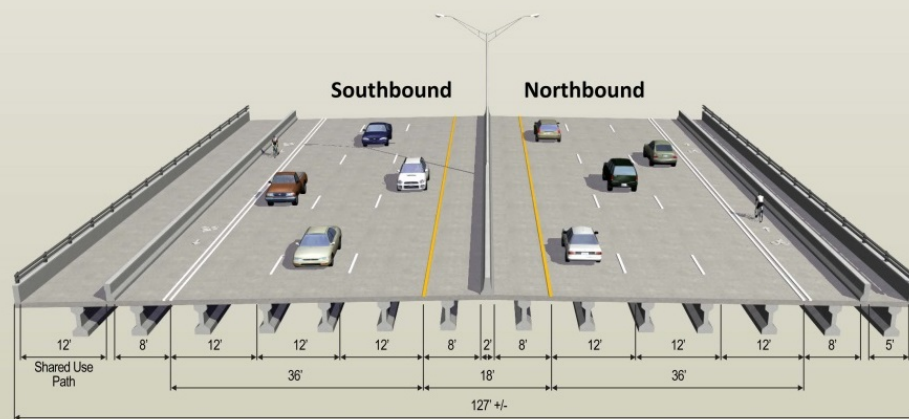
US 41 (SR 45)

From Kracker Avenue to South of SR 676 (Causeway Boulevard)
Project Development and Environment (PD&E) Study
Work Program Item Segment No. 430056-1

US 41 AT THE ALAFIA RIVER



EXISTING BRIDGES (LOOKING NORTH)

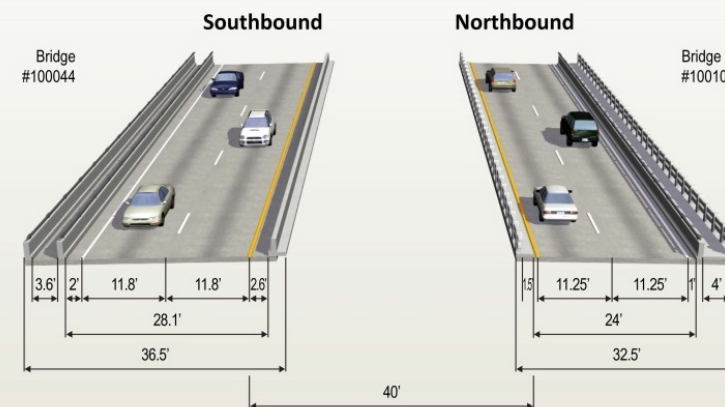


PROPOSED BRIDGE AT ALAFIA RIVER (DESIGN SPEED = 45 MPH)

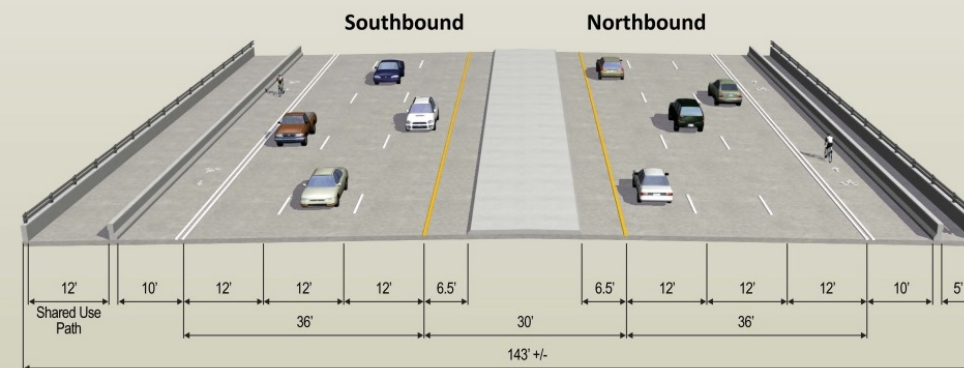
US 41 (SR 45)

From Kracker Avenue to South of SR 676 (Causeway Boulevard)
Project Development and Environment (PD&E) Study
Work Program Item Segment No. 430056-1

US 41 AT BULLFROG CREEK



EXISTING BRIDGES (LOOKING NORTH)



PROPOSED BRIDGE AT BULLFROG CREEK (DESIGN SPEED = 50 MPH)



US 41 (SR 45)

From Kracker Avenue to South of SR 676 (Causeway Boulevard)
Project Development and Environment (PD&E) Study



US 41 (State Road 45) Project Development & Environment Study



WPI Segment No. 430056-1
ETDM Project Number: 5180

From Kracker Avenue to South of Causeway Boulevard (SR 576)
Hillsborough County

Public Hearing
January 26, 2016
Gardenville Recreation Center, Gibsonton Florida

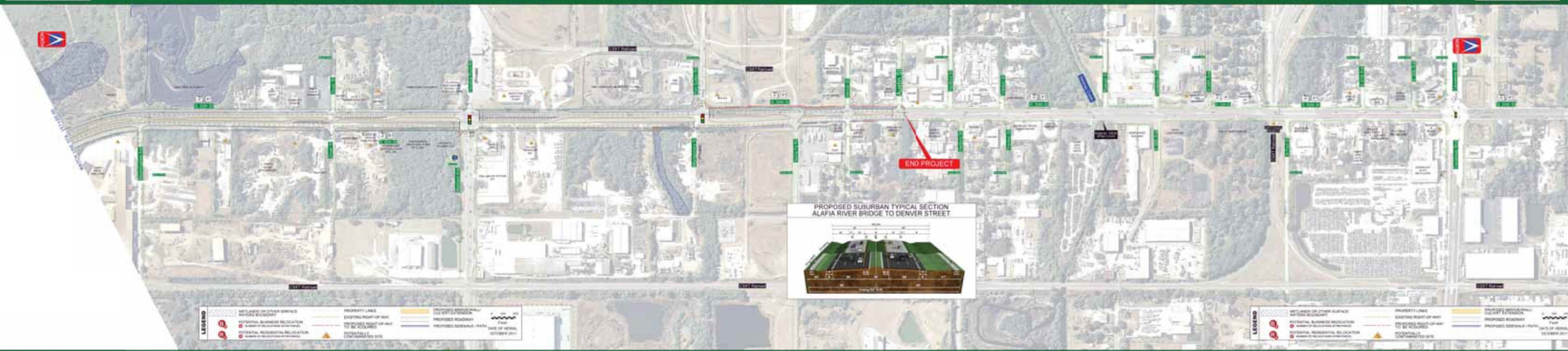


US 41 (SR 45)

From Kracker Avenue to South of SR 676 (Causeway Boulevard)
Project Development and Environment (PD&E) Study



US 41 (State Road 45) Project Development & Environment Study



WPI Segment No. 430056-1
ETDM Project Number: 5180

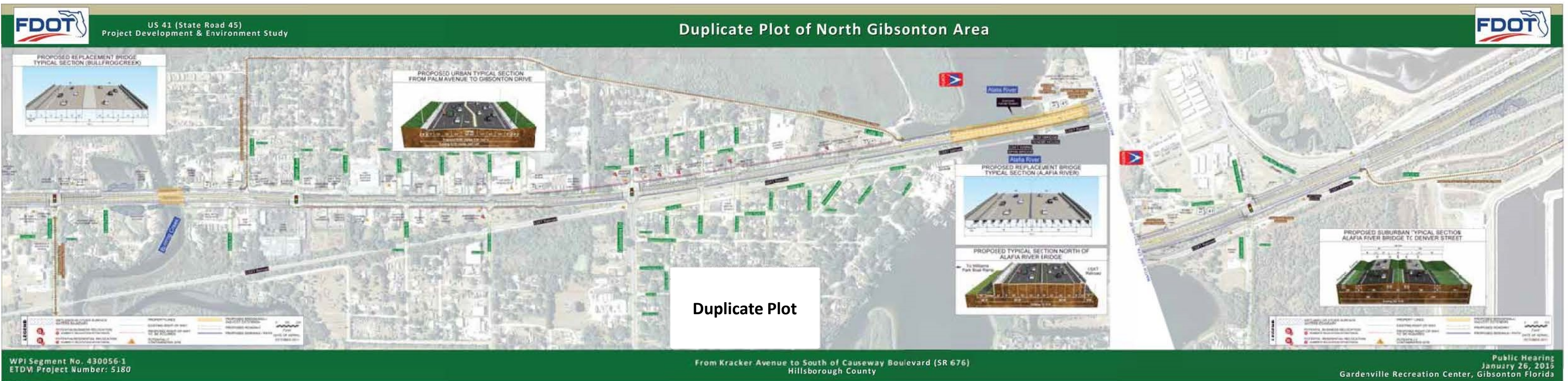
From Kracker Avenue to South of Causeway Boulevard (SR 676)
Hillsborough County

Public Hearing
January 26, 2016
Gardenville Recreation Center, Gibsonton Florida



US 41 (SR 45)

From Kracker Avenue to South of SR 676 (Causeway Boulevard)
Project Development and Environment (PD&E) Study





US 41 (SR 45)

From Kracker Avenue to South of SR 676 (Causeway Boulevard)
Project Development and Environment (PD&E) Study

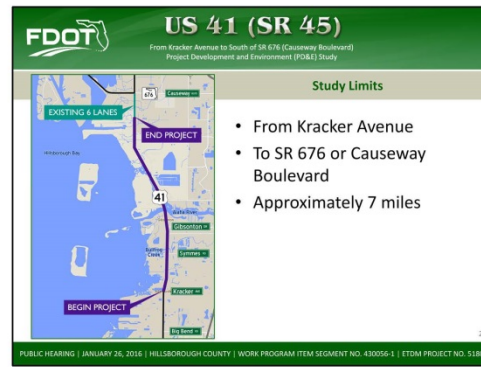


PowerPoint Presentation with Script



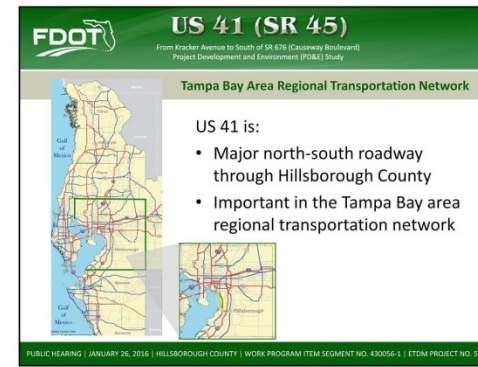
The Florida Department of Transportation welcomes you to the Public Hearing for the Project Development and Environment, or PD and E, study for a segment of US 41 (State Road 45) in southern Hillsborough County.

1



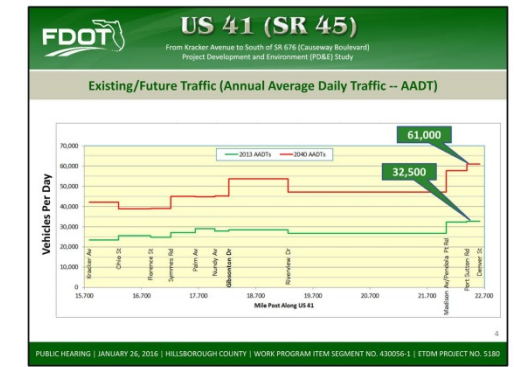
The study limits extend from Kracker Avenue to south of State Road 676 or Causeway Boulevard, a distance of approximately 7 miles.

2



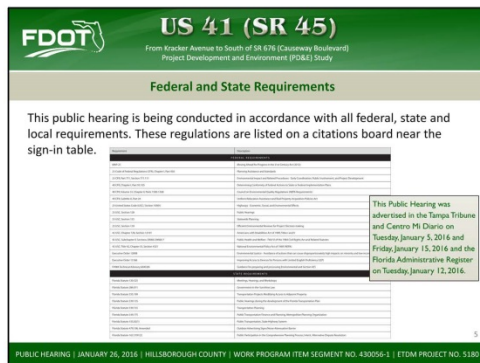
US 41 is a major north-south arterial of regional significance that parallels I-75 and US 301 in Hillsborough County. Within the study area, US 41 plays a significant role in connecting southern Hillsborough County to the Tampa Bay region.

3



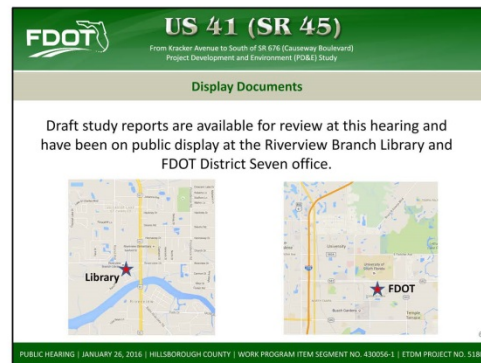
As many as 32,500 vehicles per day currently travel this section of US 41, and it is important to consider how this corridor will continue to serve the region in the future.

4



This public hearing is being conducted in accordance with all federal, state and local requirements. These regulations are listed on a citations board near the sign-in table.

5



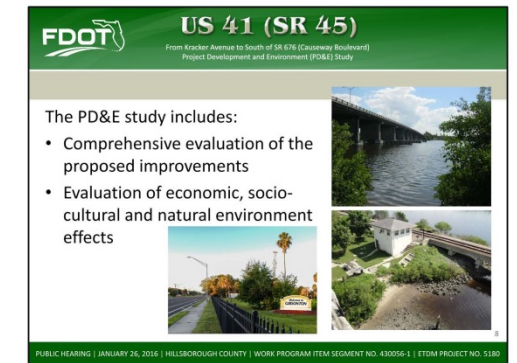
Draft study reports are available for review at this hearing and have been on public display at the Riverview Branch Library and Florida Department of Transportation (FDOT), District Seven office.

6



The display period began on January 5th and will continue through February 5th, 2016.

7



This P D and E study process includes a comprehensive evaluation of the proposed improvements shown in the engineering concepts on display. Those concepts are evaluated for economic impacts as well as effects on the socio-cultural and natural environments in the area.

8

The need to widen US 41 to six lanes is based on several factors:

- By the year 2040, traffic on US 41 will grow to an estimated 61,000 vehicles per day causing an unacceptable level of service on the existing four-lane roadway;
- US 41 is a designated emergency evacuation route, and maintaining acceptable operational conditions is vital to the safety and welfare of residents of southern Hillsborough County;
- US 41 has been identified as a regional roadway by the West Central Florida Metropolitan Planning Organizations' Chairs Coordinating Committee. It is a critical link in the local and regional transportation network, supporting a growing economy and the safe and efficient movement of freight and goods throughout the state.

The currently adopted year 2040 Long Range Transportation Plan for the Hillsborough County Metropolitan Planning Organization also documents the need to widen US 41 in this area.

Since the PD and E study began in late 2012, FDOT has been preparing detailed engineering and environmental evaluations, and coordinating with stakeholders to identify a recommended alternative. The purpose of this public hearing is to present the recommended build alternative and receive your comments for the official study record.

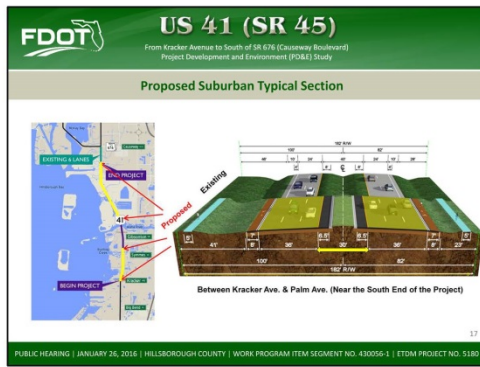
To help us determine the best improvement option, we first had to examine the current roadway conditions. Within the study area, US 41 is a four-lane divided roadway with 12-foot travel lanes, paved shoulders and sidewalks in some areas.

The existing roadways outside of the north Gibsonton area have rural typical sections with ditches and swales for drainage.

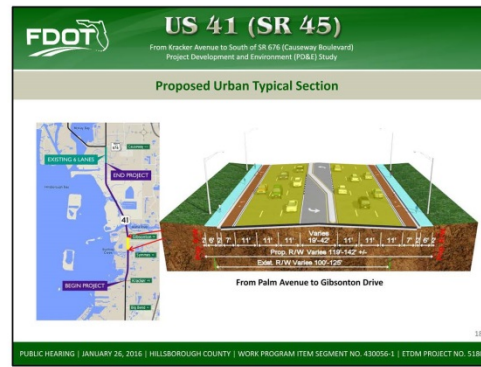
The roadway within the north Gibsonton area includes curb and gutter and drainage inlets and pipes, and the segment north of Gibsonton Drive south of the Alafia River also includes a ditch on the east side next to the railroad.

The existing right of way varies from 100 feet wide in the north Gibsonton area to 182 feet wide in the areas outside of north Gibsonton. The existing posted speed limit ranges from 50 to 55 miles per hour.

The recommended build alternative was developed after analysis of anticipated growth and future transportation needs of the corridor. Recommended improvements include widening the existing highway to six lanes as well as intersection improvements, construction of stormwater management and floodplain compensation ponds and provision of bicycle and pedestrian facilities.



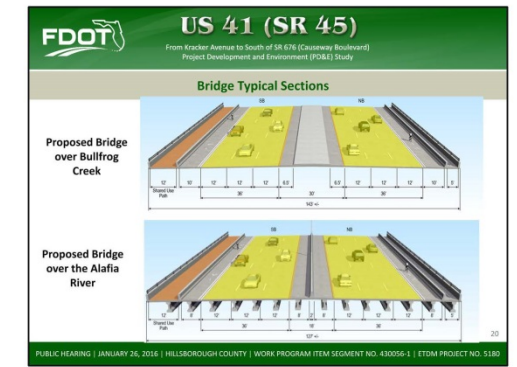
A **suburban** roadway typical section is proposed for areas to the south and north of the North Gibsonton area -- that is -- south of Palm Avenue and north of the Alafia River Bridge. The typical section shown here applies to the area south of Palm Avenue. This proposed section will have three 12-foot travel lanes in each direction, with a 30-foot wide, curbed grassed median with paved inside shoulders, and 7-foot paved outside shoulders including buffered bicycle lanes and 5-foot sidewalks on both sides. This alternative would fit within the existing 182 feet of right of way.



An **urban** typical section is recommended between Palm Avenue and Gibsonton Drive, similar to what is there now. This proposed roadway will have three 11-foot travel lanes in each direction, with a 19-foot to 42-foot wide median, and 7-foot paved buffered bicycle lanes and 6-foot sidewalks on both sides. Additional right of way will need to be purchased to construct this section.



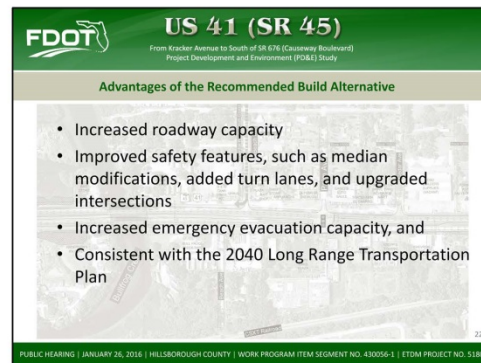
The proposed typical section between Gibsonton Drive and the Alafia River is similar to the previous typical section except that the existing ditch on the east side next to the CSX Transportation railroad tracks would be maintained in order to avoid the need to purchase right of way from CSX. Additional right of way will need to be purchased on the west side to construct this section.



In addition to the roadway widening, the existing bridges at Bullfrog Creek and the Alafia River are proposed to be replaced with new, wider six-lane bridges, which will include a shared-use path on the west side to accommodate the future South Coast Greenway. The South Coast Greenway is planned to run parallel to US 41 in several places.



The recommended build alternative is estimated to cost approximately 164 million in today's dollars.



There are advantages and disadvantages associated with constructing the recommended build alternative. Advantages of the recommended build alternative include:

- Increased roadway capacity
- Improved safety features, such as median modifications, added turn lanes, and upgraded intersections
- Increased emergency evacuation capacity, and
- Consistent with the Hillsborough County MPO's 2040 Long Range Transportation Plan



Disadvantages of the recommended build alternative include:

- Costs associated with design, acquisition of right of way, and construction
- Temporary traffic disruptions during construction, and
- Minimal environmental effects



In addition to the recommended build alternative, the no-build, or do-nothing, alternative is considered a viable alternative and will remain so for the duration of this study. Under the No-Build alternative, no improvements would be made to US 41 and only routine maintenance and preservation efforts would occur along the corridor.

- Advantages of the No-Build alternative include:
- No design, construction, and/or right of way costs
 - No adverse effects on natural resources, and
 - No inconvenience to the motoring public for construction

- Disadvantages of the No-Build alternative include:
- Increased travel delays due to an increase in traffic volumes
 - No improvement to emergency evacuation capacity, and
 - Is not consistent with Hillsborough County MPO's Long Range Transportation Plan.

A detailed, alternatives comparison matrix is on display this evening, as well as in the hearing newsletter.

Currently, there is no funding for any future project phases in FDOT's current five-year work program. As funding becomes available in the future, future phases will include final design, right of way acquisition, and construction.

2/5/2016

This public hearing is an opportunity for you to ask questions and offer comments on this study. Project representatives are available to provide more detailed information and to address your questions.

There are several ways to comment as part of the public hearing record. All comments received, will be reviewed and considered in the study analysis, regardless of how they are submitted. You may make a statement during the formal portion of tonight's hearing...

Speak directly with the court reporter during the informal portion of this hearing...

Complete the comment form provided in your brochure and drop it in one of the comment boxes today...

FDOT US 41 (SR 45)
From Kracker Avenue to South of SR 676 (Causeway Boulevard)
Project Development and Environment (PDE) Study

Ways to Comment

You may:

- Make a statement during the formal portion of tonight's hearing
- Speak directly with the court reporter during the informal portions
- Complete the comment form provided in your brochure and drop it in one of the comment boxes today, or
- **Mail the comment form**

PUBLIC HEARING | JANUARY 26, 2016 | HILLSBOROUGH COUNTY | WORK PROGRAM ITEM SEGMENT NO. 430056-1 | ETDM PROJECT NO. 5180

Or complete the comment form later and mail it to the pre-printed address on the back of the form.

FDOT US 41 (SR 45)
From Kracker Avenue to South of SR 676 (Causeway Boulevard)
Project Development and Environment (PDE) Study

Ways to Comment

Visit the project website and electronically submit your comments there:
<http://active.fdotd7studies.com/us41/kracker-to-sr676/>

All comments must be received or postmarked by February 5, 2016, to become part of the PD&E study public hearing record.

PUBLIC HEARING | JANUARY 26, 2016 | HILLSBOROUGH COUNTY | WORK PROGRAM ITEM SEGMENT NO. 430056-1 | ETDM PROJECT NO. 5180

You may also visit the project website and electronically submit your comments there. All comments must be received or postmarked by February 5th, 2016, to become part of the PD and E study public hearing record.

FDOT US 41 (SR 45)
From Kracker Avenue to South of SR 676 (Causeway Boulevard)
Project Development and Environment (PDE) Study

Following the Hearing

- The Project Team will:
 - Review public input
 - Document the preferred alternative
 - Finalize the study documents
 - Complete the PD&E study
- Submit final documents for review and approval
- Complete study in summer of 2016

PUBLIC HEARING | JANUARY 26, 2016 | HILLSBOROUGH COUNTY | WORK PROGRAM ITEM SEGMENT NO. 430056-1 | ETDM PROJECT NO. 5180

Following the hearing, the Project Team will review all public input. They will document the preferred alternative, finalize the study documents, and complete the PD and E study. In the next few months, the final documents will be submitted to the FDOT District Secretary for review and approval. We expect the PD and E study to be completed in the summer of 2016.

FDOT US 41 (SR 45)
From Kracker Avenue to South of SR 676 (Causeway Boulevard)
Project Development and Environment (PDE) Study

Thank You for Participating!

Remember to be Alert Today, Alive Tomorrow.
Safety doesn't happen by accident.

PUBLIC HEARING | JANUARY 26, 2016 | HILLSBOROUGH COUNTY | WORK PROGRAM ITEM SEGMENT NO. 430056-1 | ETDM PROJECT NO. 5180

The department thanks you for your participation at this public hearing and for your interest in this important transportation project. Remember to be Alert Today, Alive Tomorrow. Safety doesn't happen by accident.

Please take time to view the exhibits in the Main Area and provide us your comments

Next show will begin in **2** minutes

Please take time to view the exhibits in the Main Area and provide us your comments

Next show will begin in **1** minute

Please take time to view the exhibits in the Main Area and provide us your comments

Next show will begin in **10** seconds

Please take time to view the exhibits in the Main Area and provide us your comments

Next show will begin in **5** seconds



US 41 (SR 45)

From Kracker Avenue to South of SR 676 (Causeway Boulevard)
Project Development and Environment (PD&E) Study



Exterior Sign Locations & Photos

US 41 Public Hearing WPI #430056-1 Gardenville Recreation Center Parking/Pedestrian Lot Signage

Modified
12/23/15



2 right signs
2 left signs
1 thru sign
5 total signs

US 41 Public Hearing WPI #430056-1 Gardenville Recreation Center Street/Vehicle Signage

Modified
1/21/16



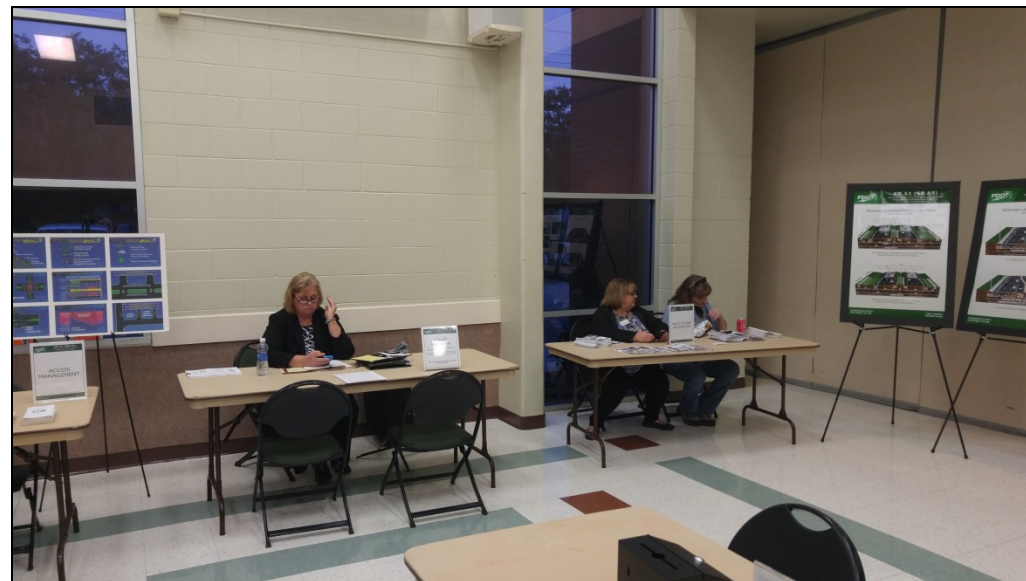
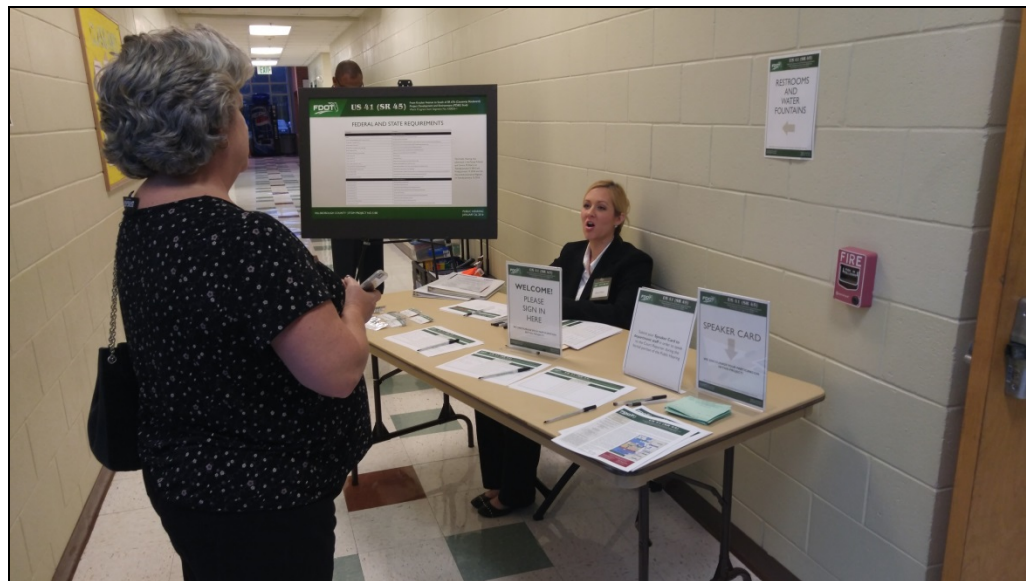
3 right signs
4 left signs
2 thru signs
2 exit only signs
11 total signs



US 41 (SR 45)

From Kracker Avenue to South of SR 676 (Causeway Boulevard)
Project Development and Environment (PD&E) Study

Photos



Photos

