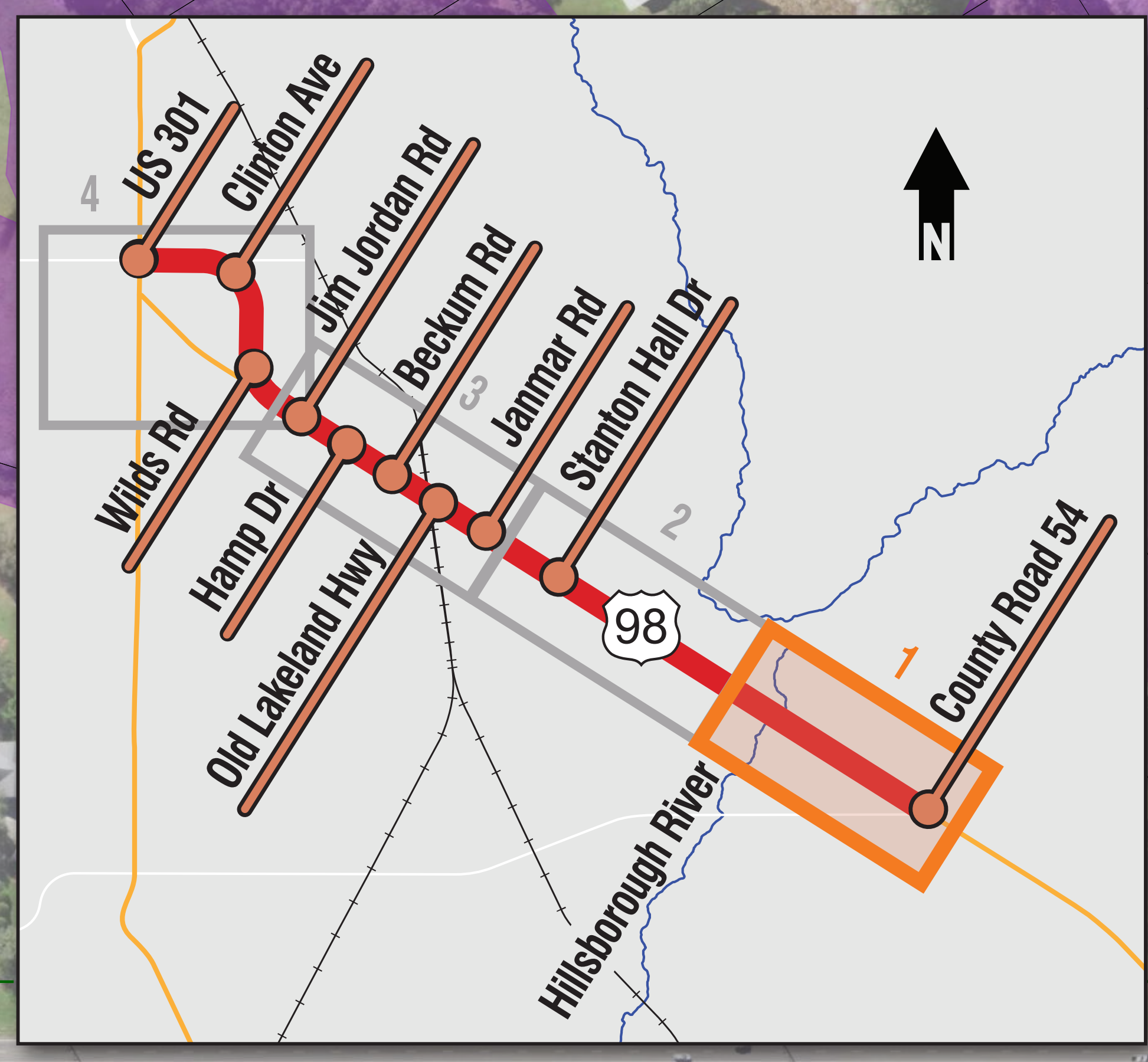
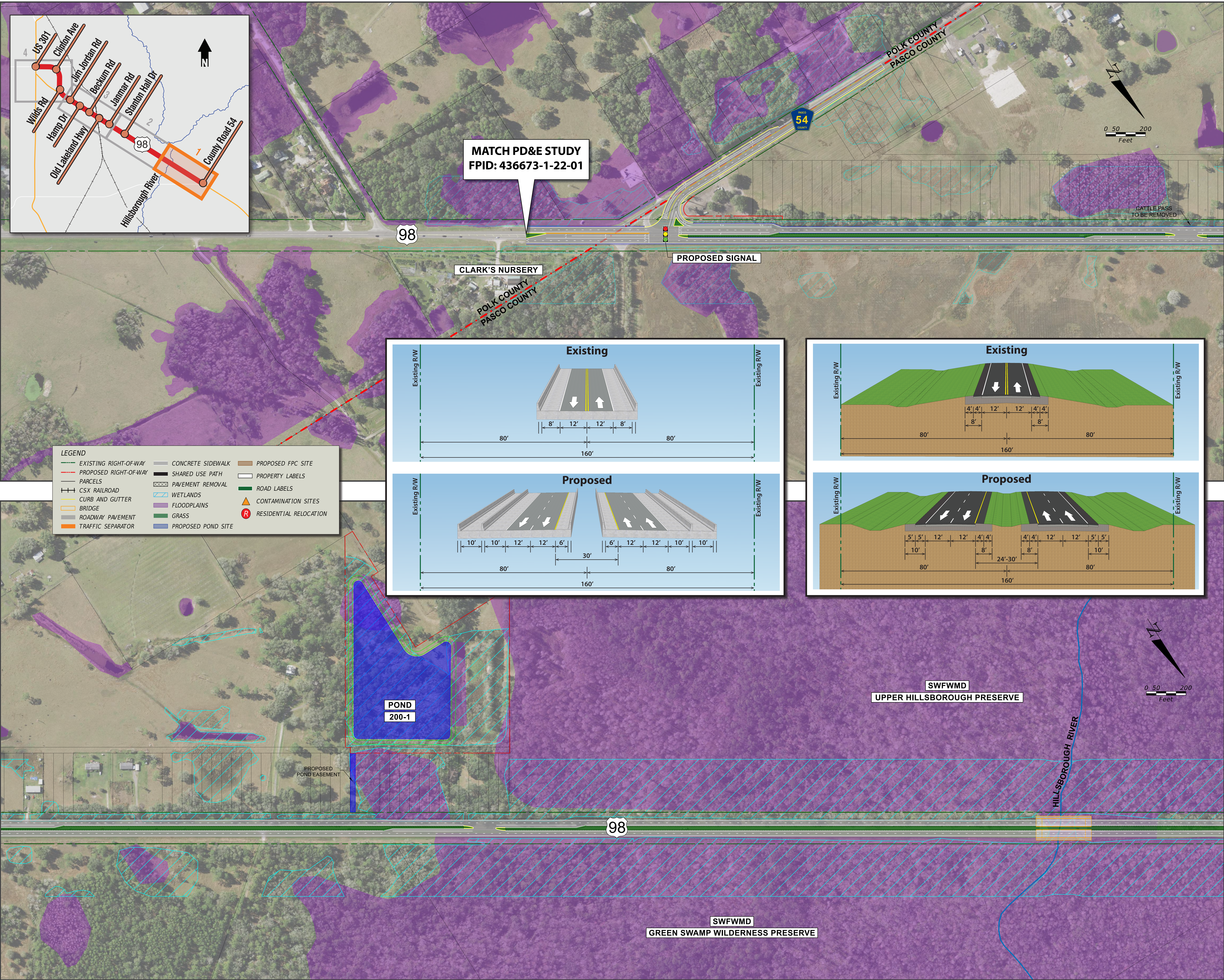


# US 98/SR 35/SR 700

## Project Development & Environment (PD&E) Study

From CR 54 to US 301/SR 39



**MATCH PD&E STUDY**  
FPID: 436673-1-22-01

CLARK'S NURSERY

PROPOSED SIGNAL

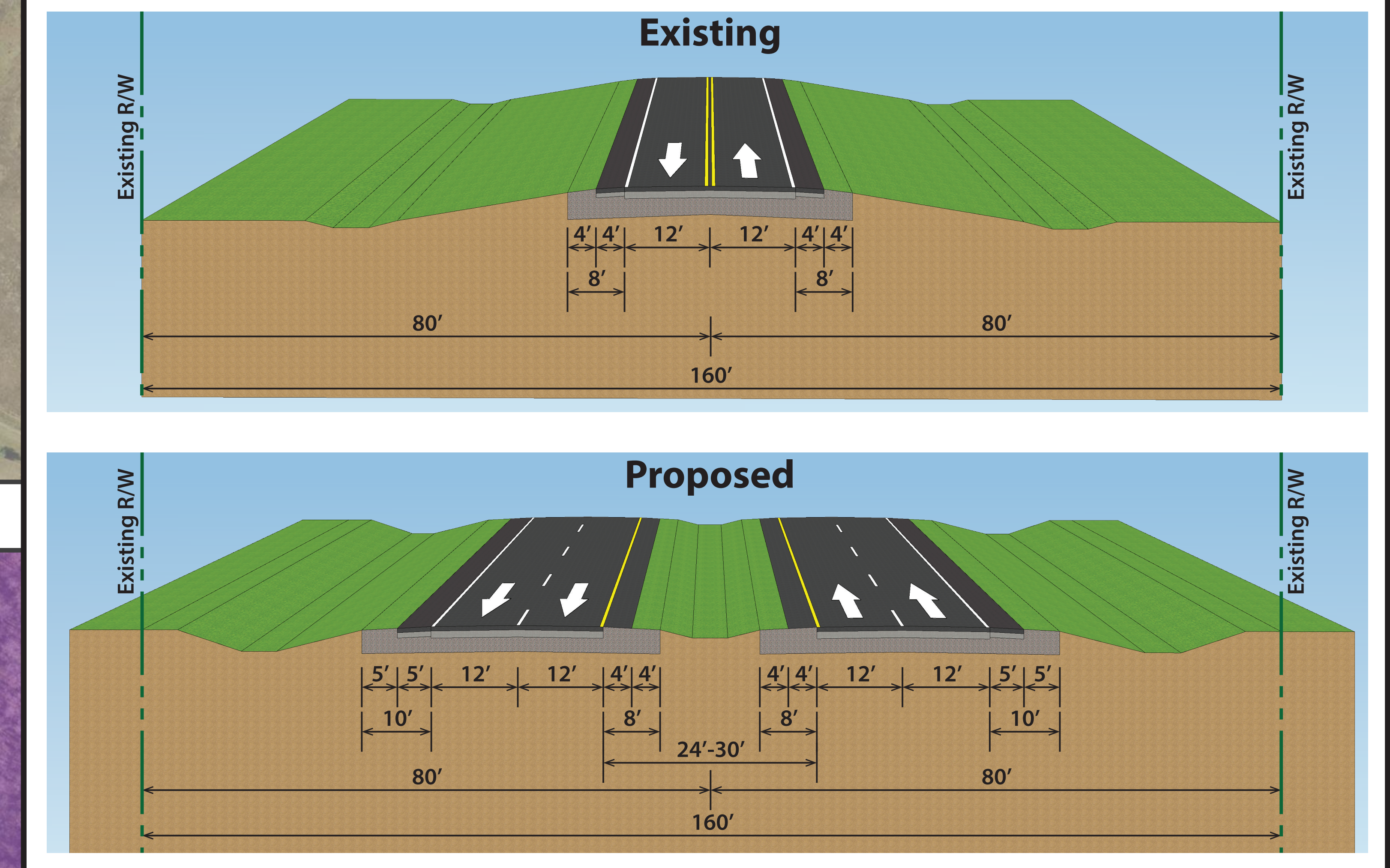
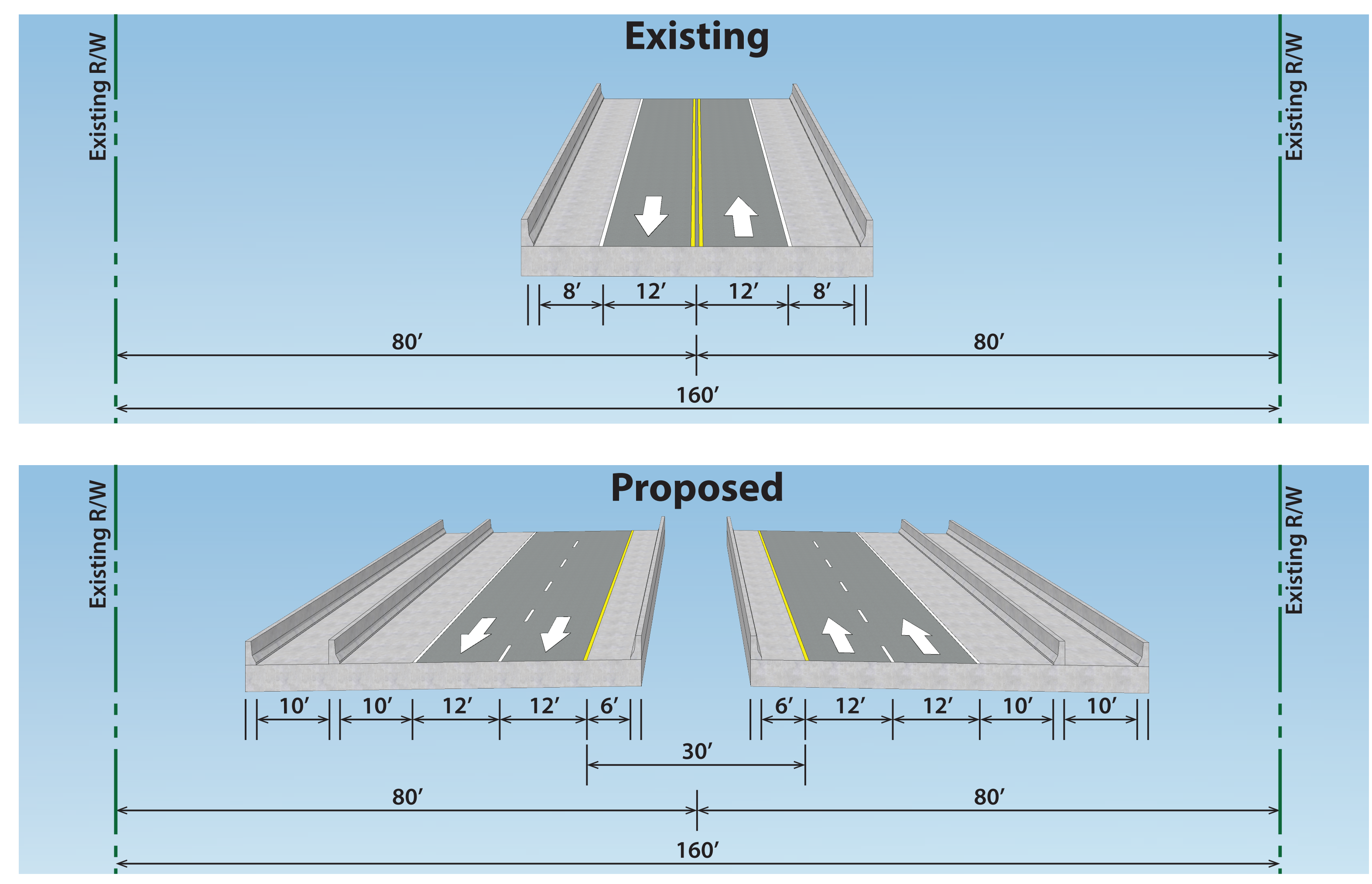
POLK COUNTY  
PASCO COUNTY

0 50 200  
Feet

0 50 200  
Feet

**LEGEND**

EXISTING RIGHT-OF-WAY	CONCRETE SIDEWALK	PROPOSED FPC SITE
PROPOSED RIGHT-OF-WAY	SHARED USE PATH	PROPERTY LABELS
PARCELS	PAVEMENT REMOVAL	ROAD LABELS
CSX RAILROAD	WETLANDS	CONTAMINATION SITES
CURB AND GUTTER	FLOODPLAINS	RESIDENTIAL RELOCATION
BRIDGE	GRASS	
ROADWAY PAVEMENT	PROPOSED POND SITE	
TRAFFIC SEPARATOR		



POND  
200-1

SWFWMD  
UPPER HILLSBOROUGH PRESERVE

SWFWMD  
GREEN SWAMP WILDERNESS PRESERVE

HILLSBOROUGH RIVER

MATCHLINE (BOARD 2)

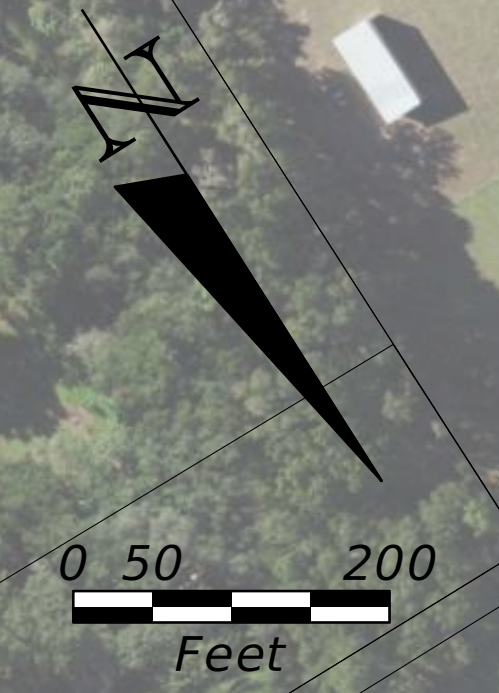
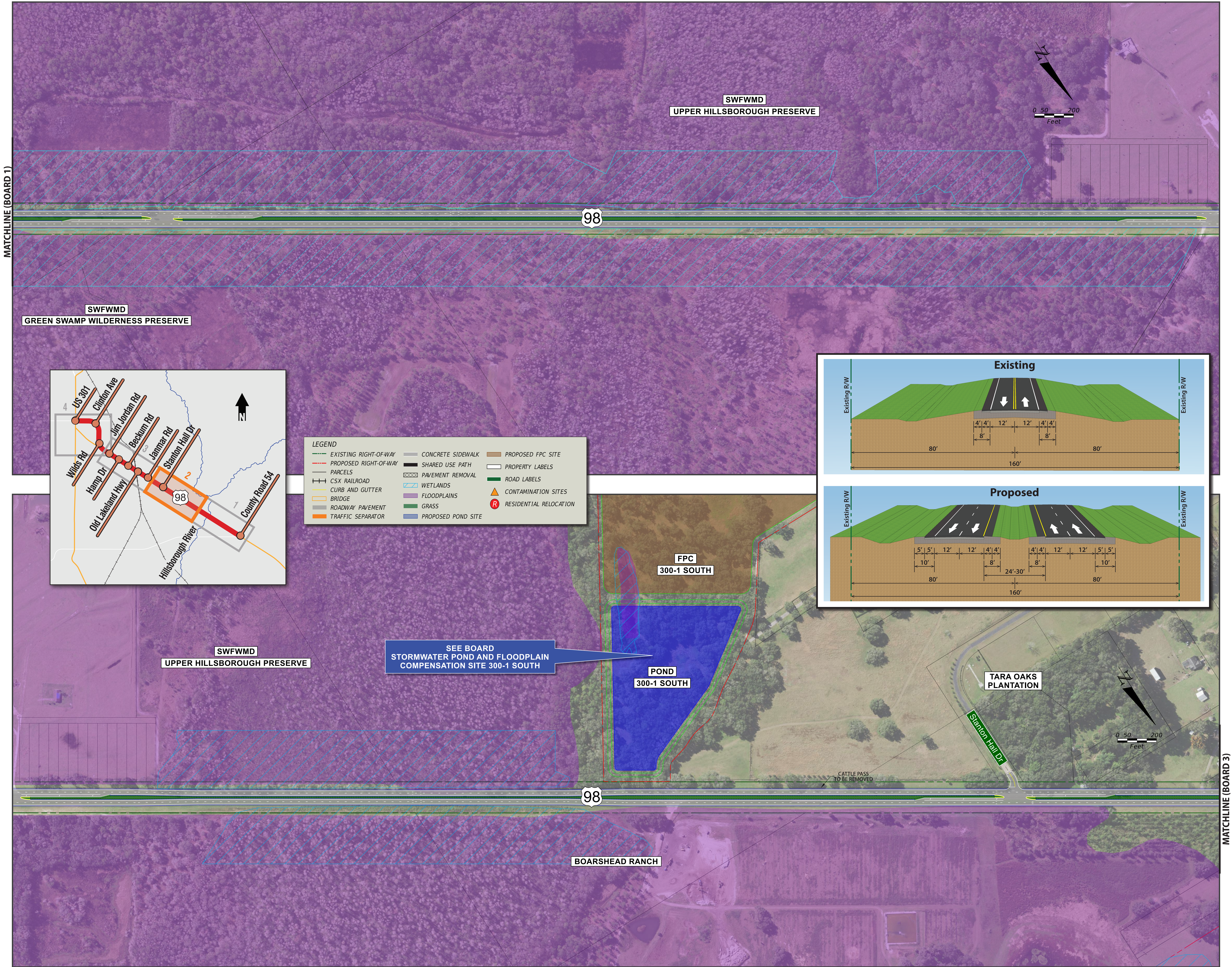
# US 98/SR 35/SR 700

## Project Development & Environment (PD&E) Study

From CR 54 to US 301/SR 39



MATCHLINE (BOARD 1)



SWFWMD  
GREEN SWAMP WILDERNESS PRESERVE

SWFWMD  
UPPER HILLSBOROUGH PRESERVE

SWFWMD  
UPPER HILLSBOROUGH PRESERVE

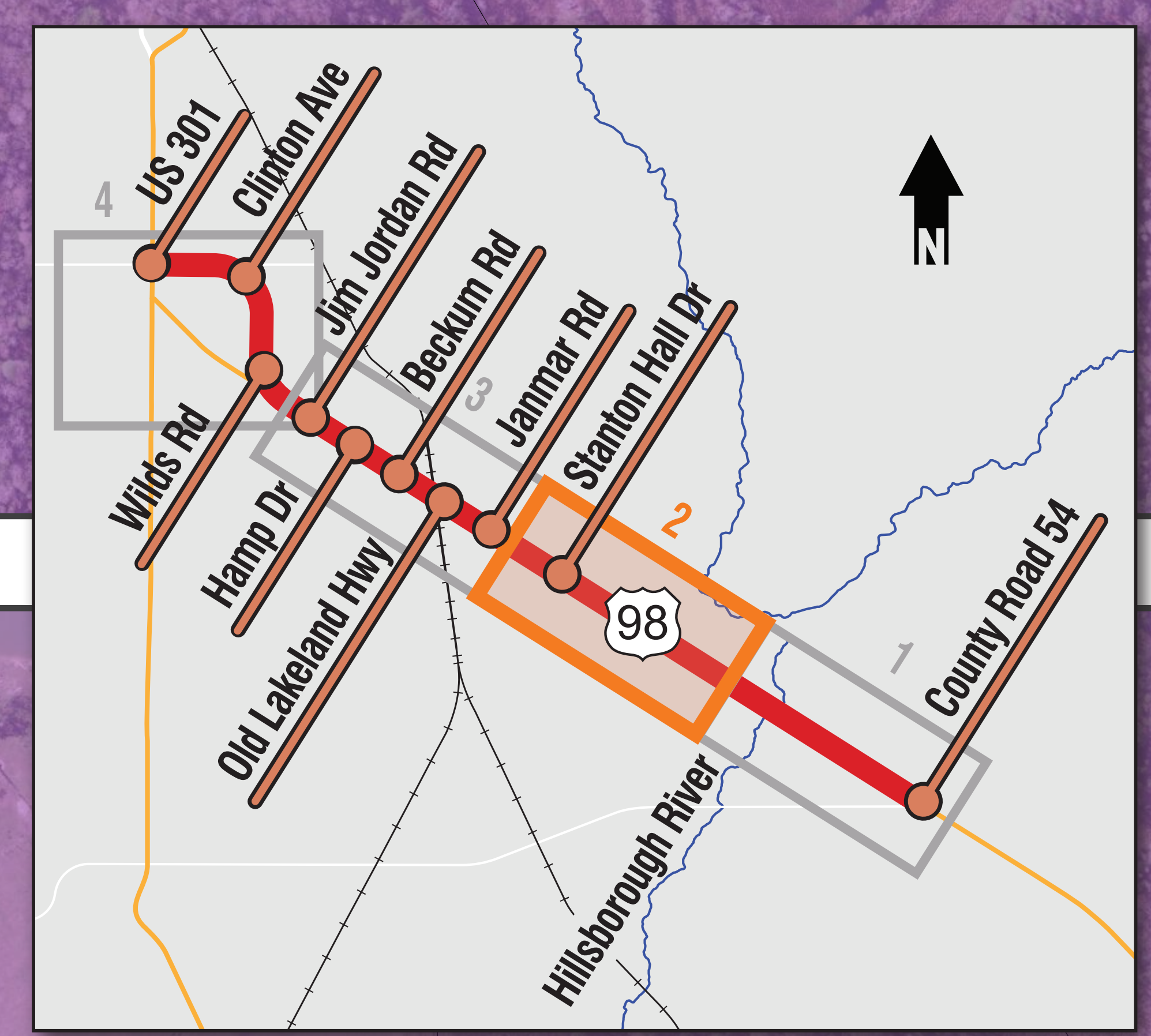
BOARSHEAD RANCH

SEE BOARD  
STORMWATER POND AND FLOODPLAIN  
COMPENSATION SITE 300-1 SOUTH

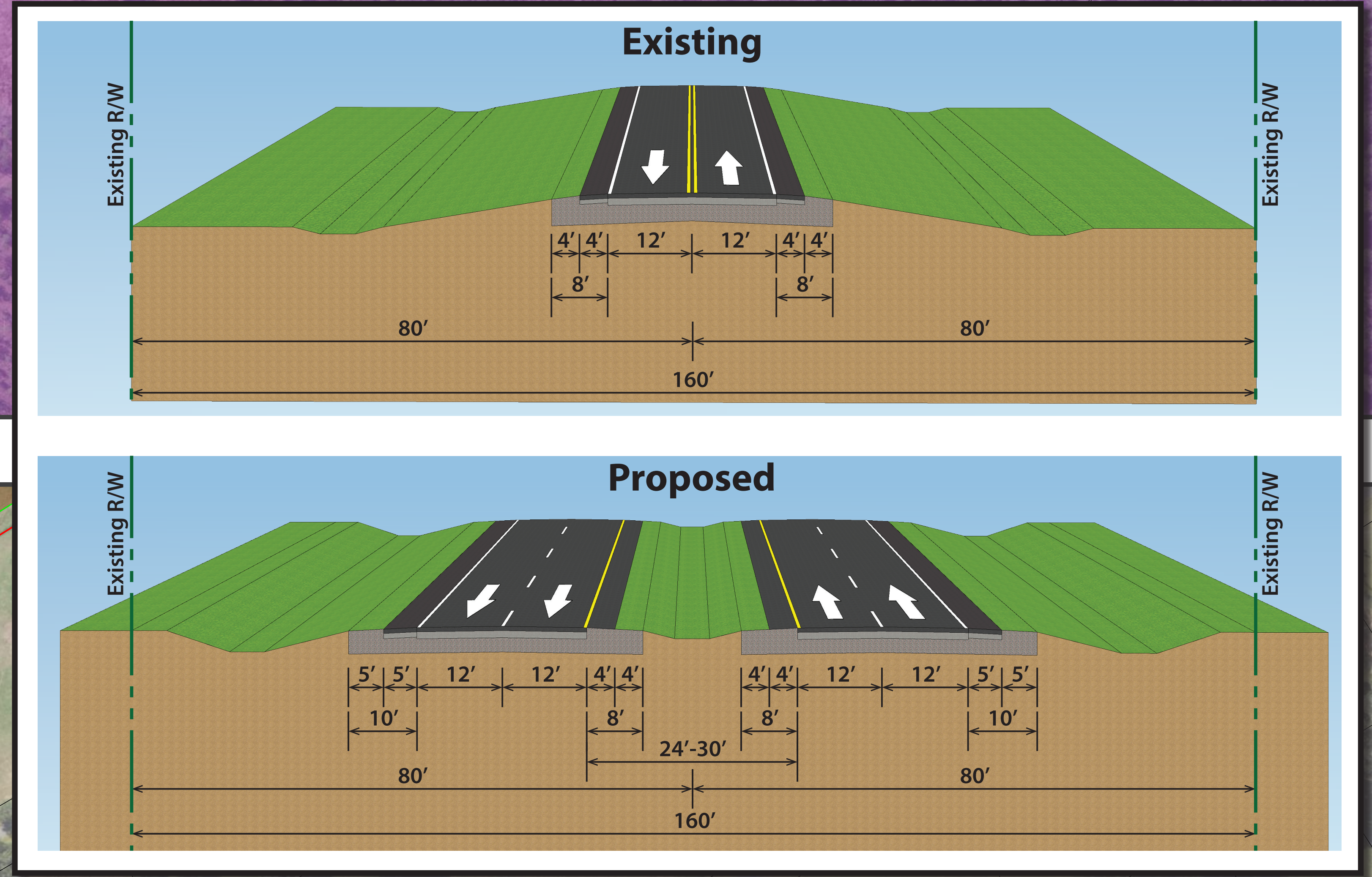
POND  
300-1 SOUTH

FPC  
300-1 SOUTH

TARA OAKS  
PLANTATION

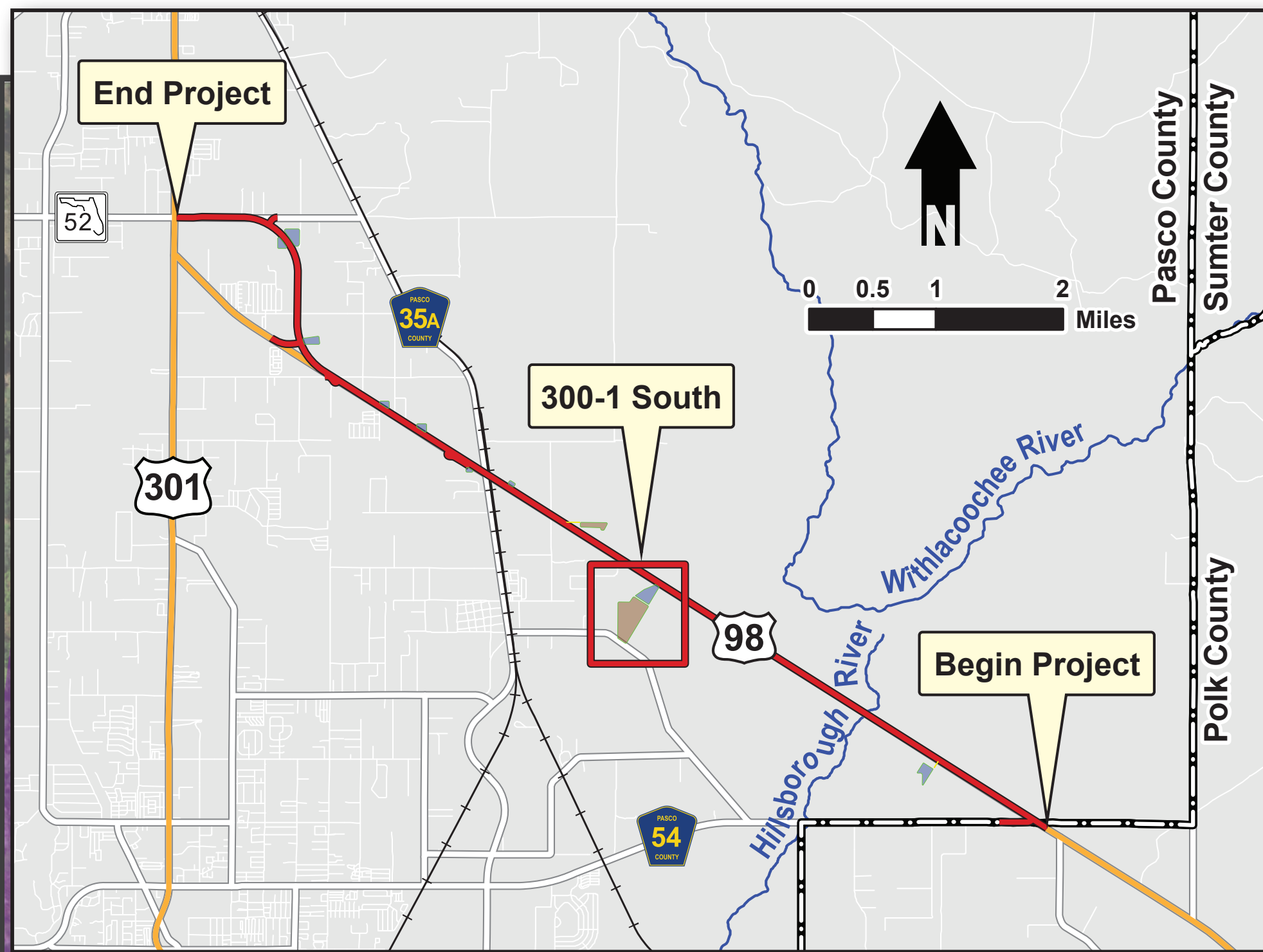


LEGEND			
	EXISTING RIGHT-OF-WAY		PROPOSED FPC SITE
	PROPOSED RIGHT-OF-WAY		CONCRETE SIDEWALK
	PARCELS		PROPERTY LABELS
	CSX RAILROAD		PAVEMENT REMOVAL
	CURB AND GUTTER		WETLANDS
	BRIDGE		FLOODPLAINS
	ROADWAY PAVEMENT		GRASS
	TRAFFIC SEPARATOR		CONTAMINATION SITES
			RESIDENTIAL RELOCATION



MATCHLINE (BOARD 3)

# STORMWATER POND AND FLOODPLAIN COMPENSATION SITE 300-1 SOUTH



**LEGEND**

EXISTING RIGHT-OF-WAY	CONCRETE SIDEWALK	PROPOSED FPC SITE
PROPOSED RIGHT-OF-WAY	SHARED USE PATH	PROPERTY LABELS
PARCELS	PAVEMENT REMOVAL	ROAD LABELS
CSX RAILROAD	WETLANDS	CONTAMINATION SITES
CURB AND GUTTER	FLOODPLAINS	RESIDENTIAL RELOCATION
BRIDGE	GRASS	
ROADWAY PAVEMENT	PROPOSED POND SITE	
TRAFFIC SEPARATOR		

SWFWMD  
UPPER HILLSBOROUGH PRESERVE

FPC  
300-1 SOUTH

POND  
300-1 SOUTH

98

BOARSHEAD RANCH

SWFWMD GREEN SWAMP  
CONSERVATION EASEMENTS

CATTLE PASS  
TO BE REMOVED

# US 98/SR 35/SR 700

## Project Development & Environment (PD&E) Study

From CR 54 to US 301/SR 39

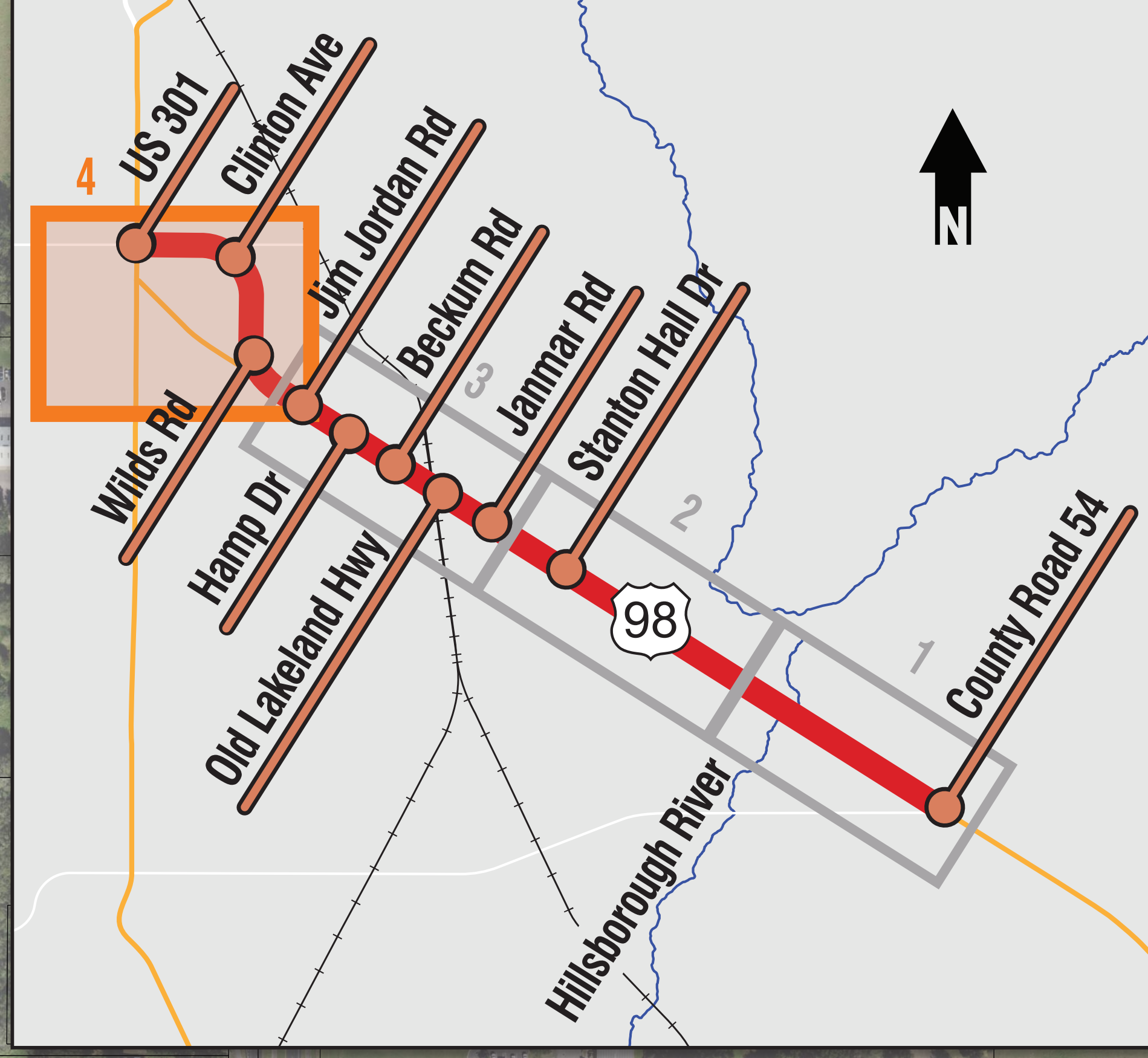
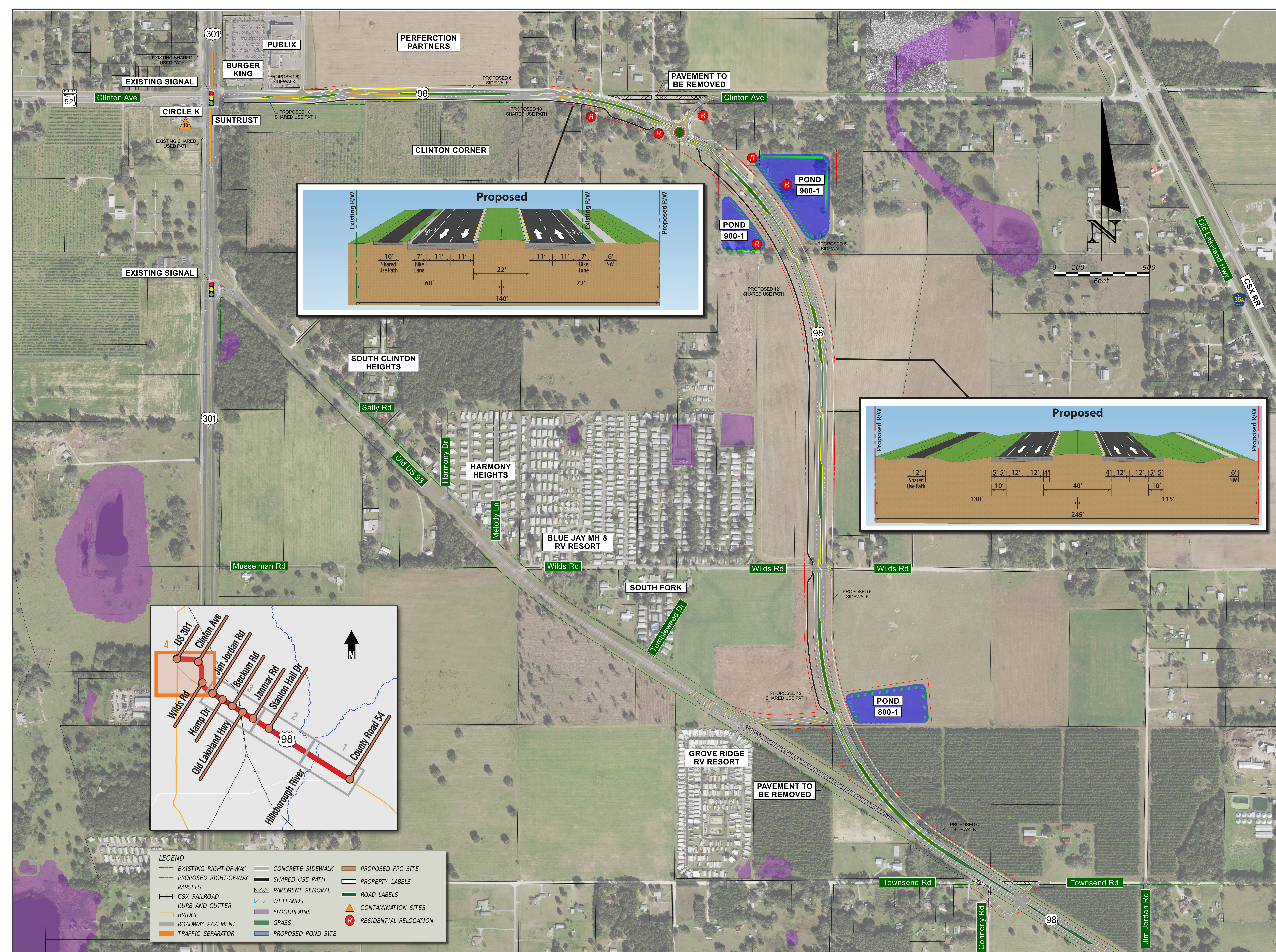


# US 98/SR 35/SR 700

## Project Development & Environment (PD&E) Study



From CR 54 to US 301/SR 39



**LEGEND**

EXISTING RIGHT-OF-WAY	CONCRETE SIDEWALK	PROPOSED FPC SITE
PROPOSED RIGHT-OF-WAY	SHARED USE PATH	PROPERTY LABELS
PARCELS	PAVEMENT REMOVAL	ROAD LABELS
CSX RAILROAD	WETLANDS	CONTAMINATION SITES
CURB AND GUTTER	FLOODPLAINS	RESIDENTIAL RELOCATION
BRIDGE	GRASS	
ROADWAY PAVEMENT	PROPOSED POND SITE	
TRAFFIC SEPARATOR		

MATCHLINE (BOARD 3)