

***Cultural Resource Assessment Survey
Technical Memorandum Addendum***

**US 98 / SR 35 / SR 700
From CR 54 to US 301/SR 39**



Florida Department of Transportation

District 7

Work Program Item Segment No. 443368-2

ETDM Project No. 14374

Pasco County, Florida

May 2022

The environmental review, consultation, and other actions required by applicable federal environmental laws for this project are being, or have been, carried out by FDOT pursuant to 23 U.S.C. § 327 and a Memorandum of Understanding dated December 14, 2016 and executed by FHWA and FDOT.

***Cultural Resource Assessment Survey
Technical Memorandum Addendum***

**US 98 / SR 35 / SR 700
From CR 54 to US 301/SR 39**

Work Program Item Segment No. 443368-2
ETDM Project No. 14374
Pasco County, Florida

Prepared for:



Florida Department of Transportation
District Seven

Prepared by:
Archaeological Consultants, Inc.
8110 Blaikie Court, Suite A
Sarasota, FL 34240

May 2022

Table of Contents

| | | |
|------------|---|----|
| SECTION 1 | INTRODUCTION | 1 |
| SECTION 2 | PROJECT DESCRIPTION | 2 |
| SECTION 3 | ENVIRONMENTAL SETTING | 4 |
| SECTION 4 | HISTORIC OVERVIEW | 12 |
| SECTION 5 | BACKGROUND RESEARCH AND CONSIDERATIONS | 12 |
| SECTION 6 | STUDY METHODOLOGY | 12 |
| SECTION 7 | INADVERTENT/UNANTICIPATED DISCOVERY OF CULTURAL REMAINS | 13 |
| SECTION 8 | LABORATORY METHODS AND CURATION | 14 |
| SECTION 9 | SURVEY RESULTS..... | 15 |
| SECTION 10 | CONCLUSIONS..... | 16 |
| SECTION 11 | LITERATURE CITED | 20 |

List of Figures

| | | |
|------------|--|----|
| Figure 1. | Location Map showing entire corridor and those areas not previously tested. | 3 |
| Figure 2. | Environmental setting and site 8PA00046. | 6 |
| Figure 3. | Environmental setting of area not previously tested. | 7 |
| Figure 4. | Environmental setting of areas not previously tested. | 8 |
| Figure 5. | Soil Types within Pond 200-1. | 9 |
| Figure 6. | Soil types of area not previously tested. | 10 |
| Figure 7. | Soil types within Pond 800-1 and other areas not previously tested. | 11 |
| Figure 8. | Approximate locations of shovel tests and previously recorded cultural resources. ... | 17 |
| Figure 9. | Approximate locations of previous shovel tests; no new shovel tests were placed in the new design area since this area was in previous APE. | 18 |
| Figure 10. | Approximate locations of shovel tests. | 19 |

List of Photos

| | | |
|----------|--|----|
| Photo 1. | Environmental conditions of Pond 200-1 looking southeast. | 4 |
| Photo 2. | Pond 800-1, adjacent to US 98, looking east..... | 5 |
| Photo 3. | Environmental conditions of the roundabout and proposed ROW, looking east, southeast. | 5 |
| Photo 4. | ROW on Jim Jordan Road, looking north, northeast. | 5 |
| Photo 5. | Sample stratigraphy within Pond 200-1. | 15 |
| Photo 6. | Sample stratigraphy within Pond 800-1. | 16 |

Appendices

| | |
|------------|----------------|
| Appendix A | Correspondence |
| Appendix B | Survey Log |

SECTION 1 INTRODUCTION

The Florida Department of Transportation (FDOT) District 7 is conducting a Project Development and Environment (PD&E) study along US Highway 98 (US 98) / State Road (SR) 35 / SR 700 from County Road (CR) 54 to US 301 / SR 39, in Pasco County (**Figure 1**). The study will focus on widening this section of US 98 from a two-lane undivided facility to a four-lane divided facility and includes the realignment of US 98 between CR 35A to US 301. The realignment allows US 98 to align with the Clinton Avenue (New SR 52) intersection at US 301 and was the result of a separate Alternatives Corridor Evaluation (ACE) study (WPI Segment No. 443368-1). The study will also evaluate issues related to traffic operations, access management, safety, and include pedestrian and bicycle accommodations. In addition, there will be the construction of Stormwater Management Facility (SMF) sites (Ponds) and Floodplain Compensation (FPC) sites. This is a federally funded project and part of on-going improvements to US 98.

Previously, a Cultural Resource Assessment Survey (CRAS) and a CRAS Technical Memorandum for SMF and FPC sites were prepared in 2021 (Archaeological Consultants, Inc. [ACI] 2021a, 2021b) and both documents were concurred upon by the State Historic Preservation Officer (SHPO) in November 2021 (**Appendix A**; Parsons 2021a, 2021b). After these documents were prepared, a Public Hearing was conducted in December 2021 in order to present information to and receive public input from interested persons regarding the proposed improvements to US 98. Based on the comments received, modifications to the conceptual plans were made (Lochner 2022). As a result, ACI was tasked with conducting an archaeological and historic survey of the modifications. This was conducted in March 2022.

The purpose of this recent survey was to locate and identify any cultural resources within the project Area of Potential Effects (APE) and to assess their significance in terms of eligibility for listing in the National Register of Historic Places (NRHP). As defined in 36 CFR Part § 800.16(d), the APE is the “geographic area or areas within which an undertaking may directly or indirectly cause alterations in the character or use of historic properties, if any such properties exist.” The archaeological APE is defined as the area contained within the footprint of proposed modifications where previously archaeological survey was not conducted. The historical/architectural APE includes the archaeological APE and immediately adjacent parcel properties as contained within 100 feet (ft) or not obstructed from view by vegetation.

All work was conducted to comply with Section 106 of the *National Historic Preservation Act* of 1966, as amended by Public Law 89-665; the *Archaeological and Historic Preservation Act*, as amended by Public Law 93-291; Executive Order 11593; and Chapter 267, *Florida Statutes (FS)*. All work was carried out in conformity with Part 2, Chapter 8 (“Archaeological and Historical Resources”) of the FDOT’s *PD&E Manual* (FDOT 2020), and the Florida Division of Historical Resources (FDHR’s) standards contained in the *Cultural Resource Management Standards and Operational Manual* (FDHR 2003), as well as with the provisions contained in the Chapter 1A-46, *Florida Administrative Code (FAC)*. Principal Investigators meet the *Secretary of the Interior’s Historic Preservation Professional*

Qualification Standards (48 FR 44716) for archaeology, history, architecture, architectural history, or historic architecture.

Archaeological background research indicated a variable probability for the occurrence of historic and/or prehistoric archaeological sites. There is one previously recorded prehistoric archaeological site within [REDACTED]. As a result of the field survey, no evidence of [REDACTED] and no new historic or prehistoric archaeological sites were found during the current field survey. Historical/architectural background research included a review of the Florida Master Site File (FMSF) and the NRHP. The research indicated no historic resources were present within the historic APE and none were found during the field survey.

SECTION 2 PROJECT DESCRIPTION

Based on the comments received at the Publix Hearing, the following modifications to the conceptual plans have been made (Lochner 2022):

1. Pond 200-1: Pond 200-1 is being relocated approximately 500' to the east to minimize wetland impacts wetlands and the agricultural operations of the property owner.
2. Old Lakeland Highway and US 98 Intersection: Minor adjustments to the right-of-way (ROW) have been made to accommodate roadway design requirements. This includes an area in the north of US 98 and east of Old Lakeland Highway to accommodate proposed drainage structures.
3. Beckum Road Corner Clip: A slight decrease in the ROW impact has been made.
4. Jim Jordan Road Corner Clips: The corner clip to the NE quadrant has been eliminated to avoid utility impacts. As a result, a new ROW take is needed to the SE quadrant.
5. Townsend Road Roundabout: The US 98 and Townsend Road intersection has been modified to a roundabout with a slight shift to the SE. There is an increase in the right of way impact. This includes an area west of US 98 and north of Townsend Road to accommodate drainage structures and to extend the proposed shared use pat to Townsend Road.
6. Old US 98 Roundabout: The US 98 and Old US 98 intersection has been modified to a roundabout. The ROW at the Old US 98 connection is slightly increased on both sides and along US 98 to the south to accommodate the roundabout and extension of the trail to the south.
7. Pond 800-1 is being relocated approximately 300 ft to the south and split to be on both the east and west sides of US 98 to allow a connection to the Old US 98 Roundabout from the east.
8. Roundabout at Sta. 1333: A roundabout has been added at Station 1333. No additional ROW.

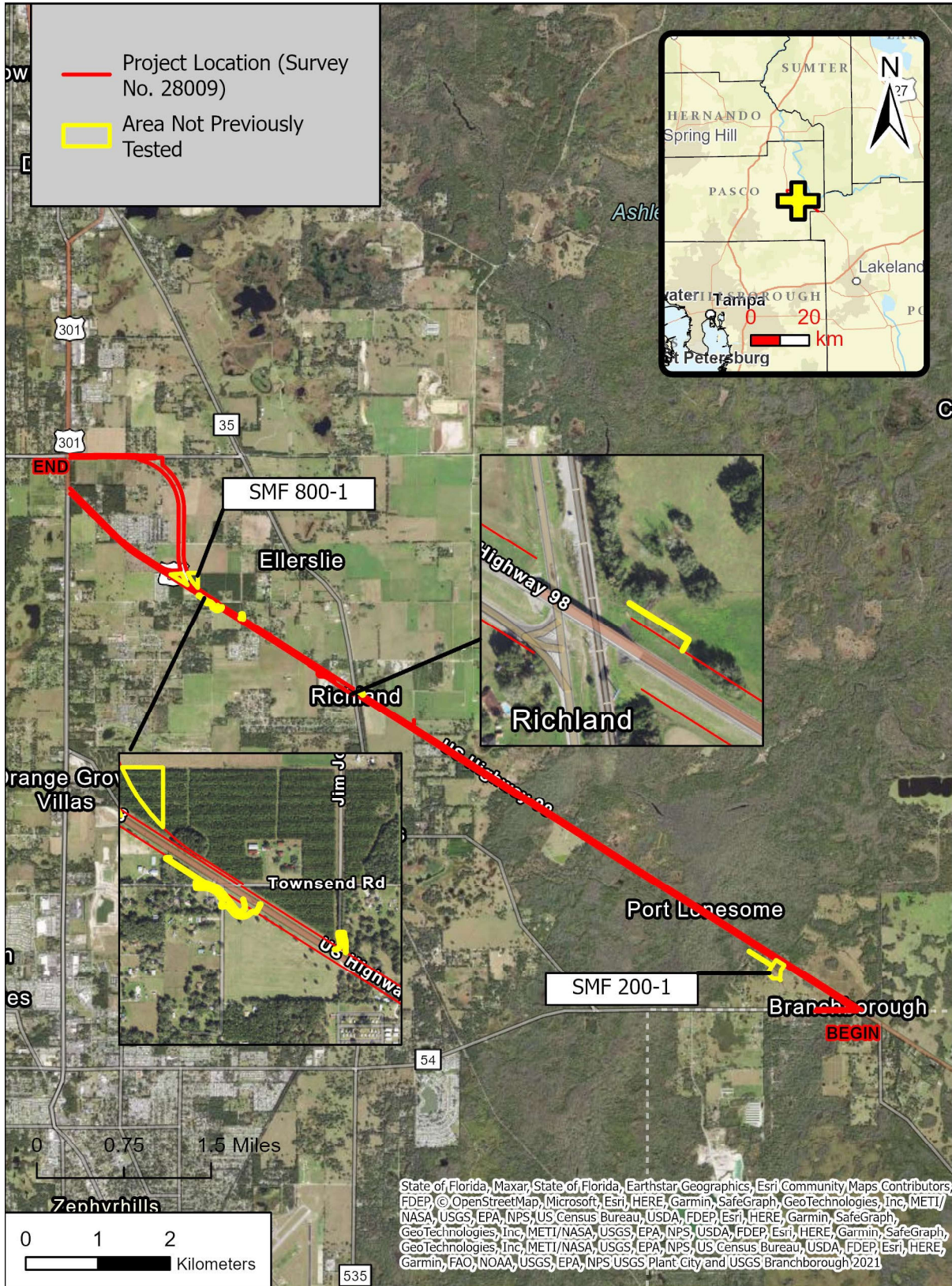


Figure 1. Location Map showing entire corridor and those areas not previously tested.

9. Cindy Lane: The Cindy Lane connection to US 98 has been modified to connect to Clinton Avenue and access US 98 via the Clinton Avenue Roundabout.
10. Sta. 1361-1363: The ROW has been modified.

SECTION 3 ENVIRONMENTAL SETTING

The overall archaeological APE is located in Sections 11, 12, and 13 Township 25 South, Range 21 East; and Sections 19, 20, 29, 34, and 35, Township 25 South, Range 22 East; Pasco County, Florida (**Figures 2, 3, and 4**; Branchborough and Dade City United States Geological Survey [USGS] 1960a, 1960b). Several lakes, swamps, and seasonal wetlands are within and adjacent to the pond sites. The project area is characterized as hardwood forests and pine flatwoods, mixed with swamps (Davis 1967). Currently, the APE is primarily a rural setting with mixed agricultural and residential development. Disturbances noted within the APE include ditching, pasture, and planted pines (**Photos 1-4**).

The APE is located within four soil associations: the Lake-Candler, Tavares-Sparr-Adamsville, Pomona-EauGallie-Sellers, and Basinger-Wauchula soil associations. **Figures 5-7** show the specific soils within the archaeological APE. Vegetation associated with these soil associations includes slash pine, longleaf pine, live oak, laurel oak, willow oak, water oak, blackjack oak, turkey oak, and post oak. An understory of greenbrier, saw palmetto, pineland threawn, creeping bluestem, lopsided indiagrass, panicum, purple lovegrass, and broomsedge bluestem is common with the wetter areas containing cypress, bay, and sweetgum (United States Department of Agriculture [USDA] 1982).



Photo 1. Environmental conditions of Pond 200-1 looking southeast.



Photo 2. Pond 800-1, adjacent to US 98, looking east.



Photo 3. Environmental conditions of the roundabout and proposed ROW, looking east, southeast.



Photo 4. ROW on Jim Jordan Road, looking north, northeast.

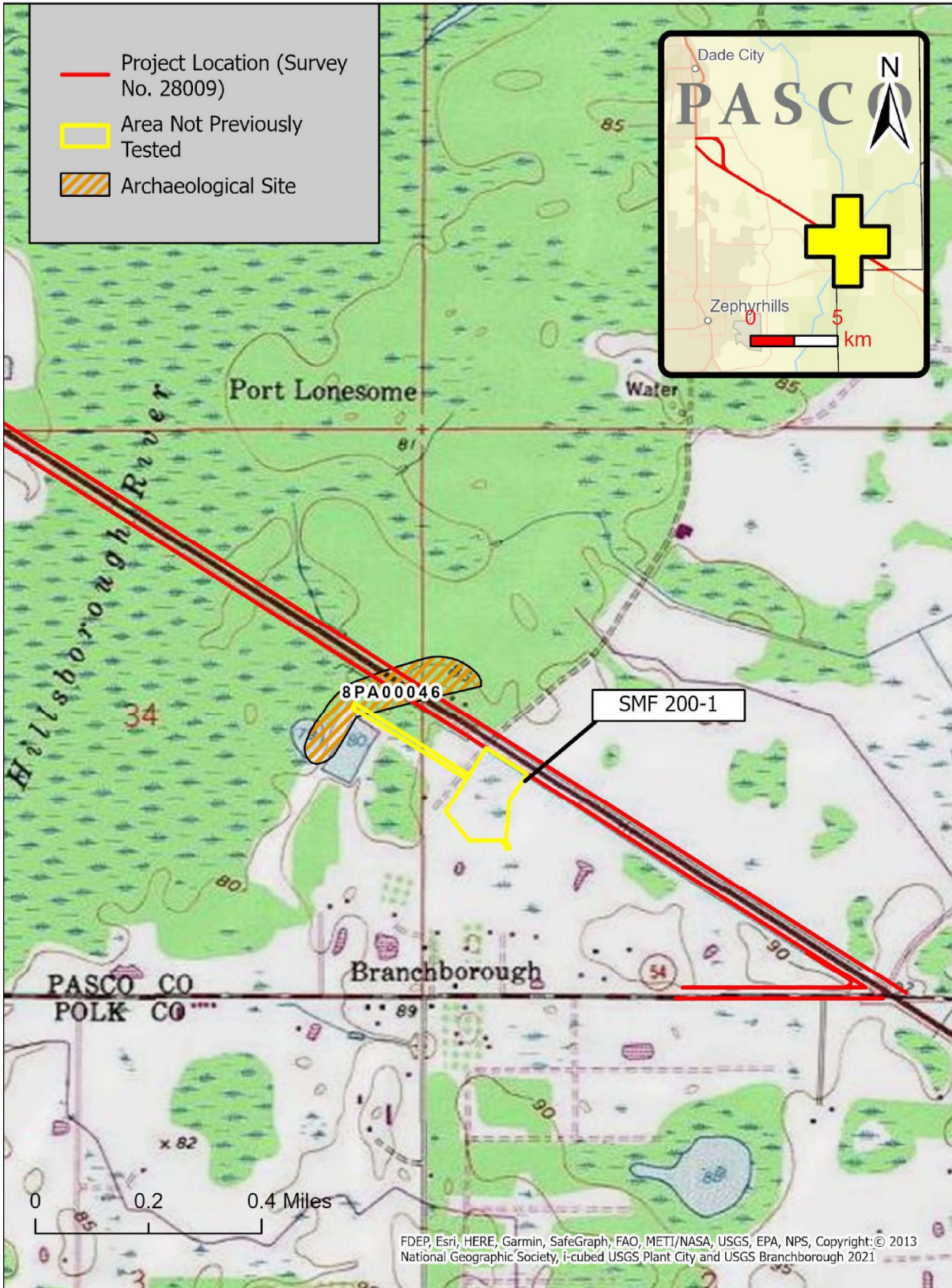


Figure 2. Environmental setting and site 8PA00046.

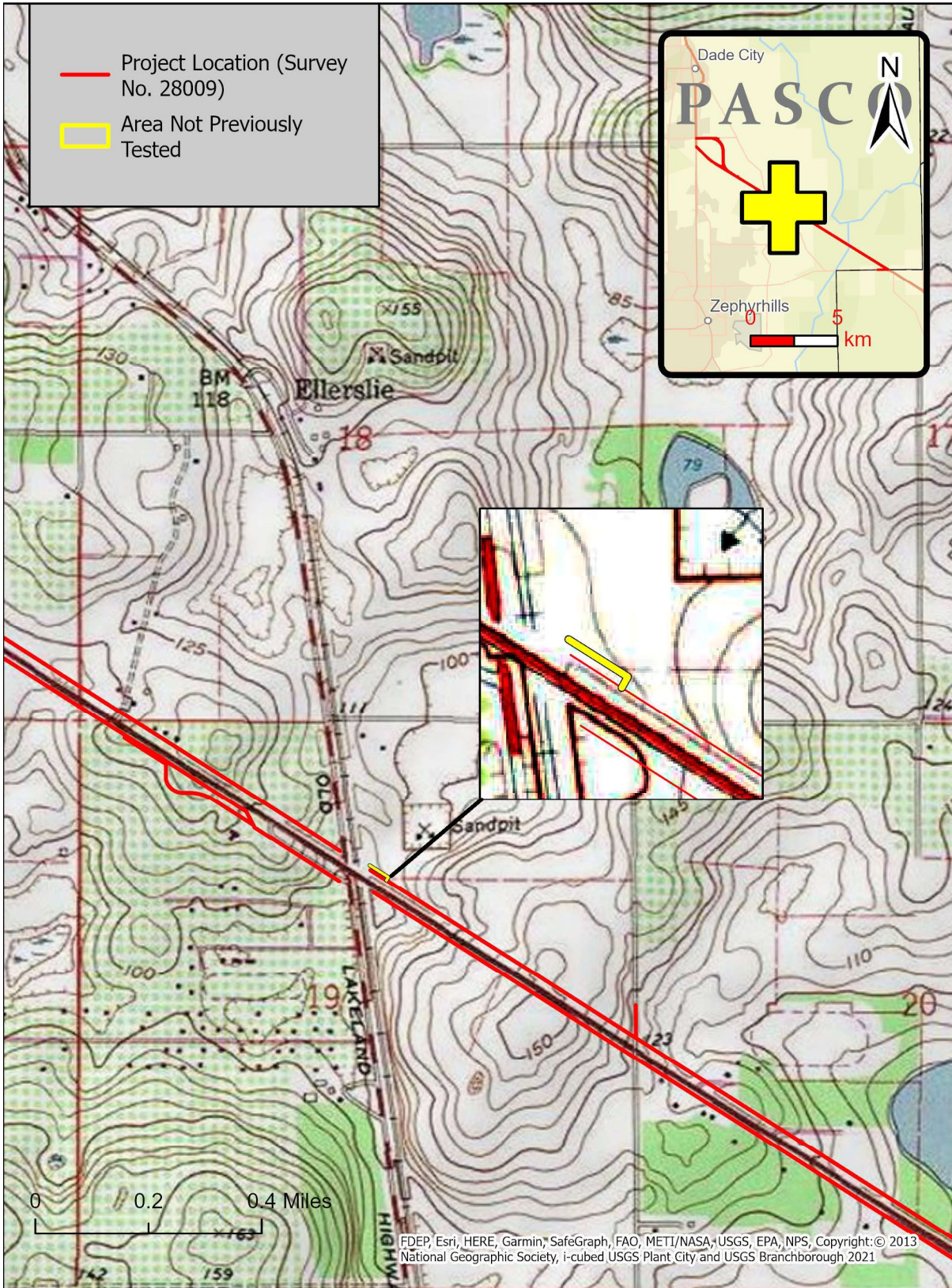


Figure 3. Environmental setting of area not previously tested.

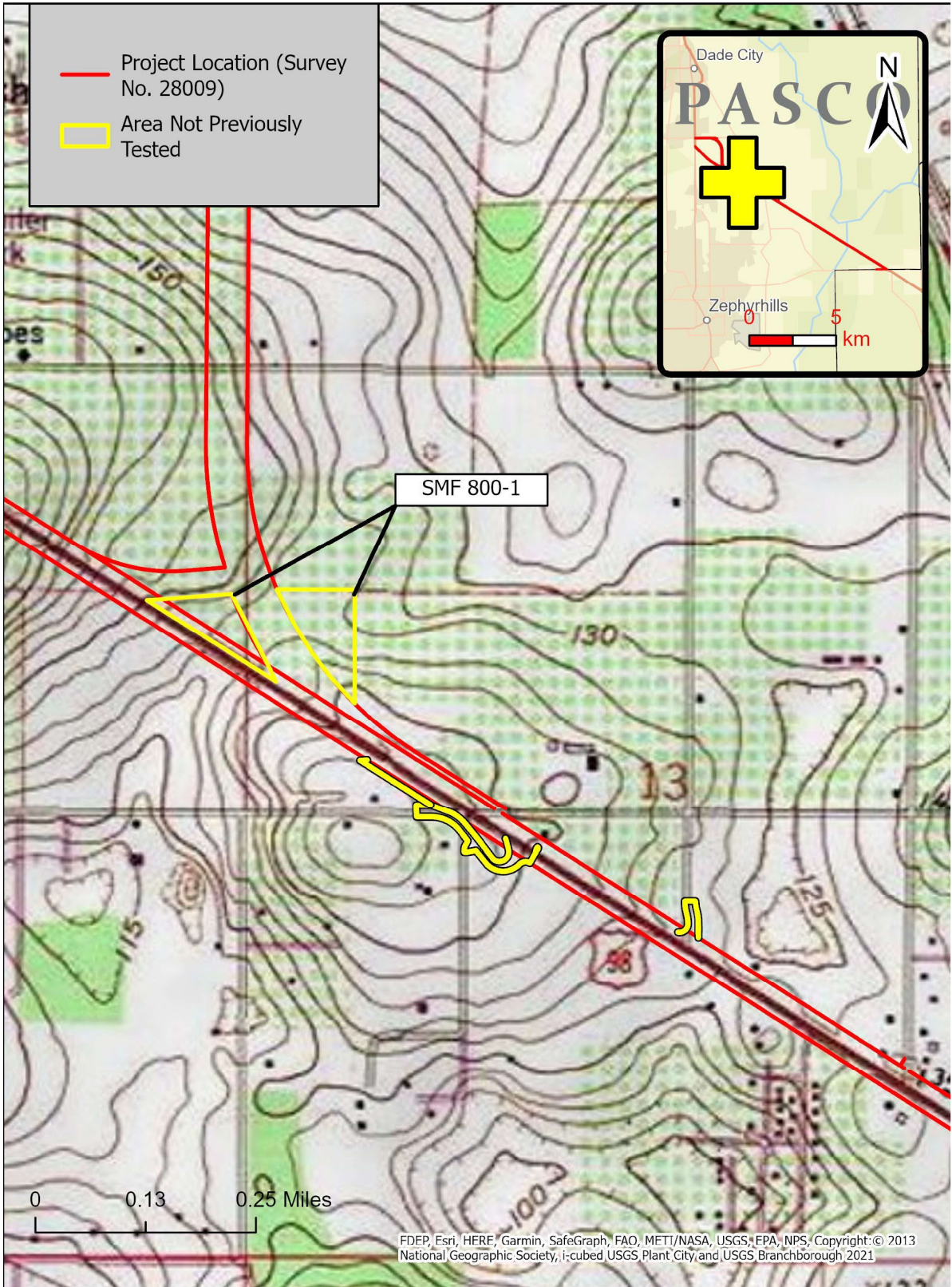


Figure 4. Environmental setting of areas not previously tested.

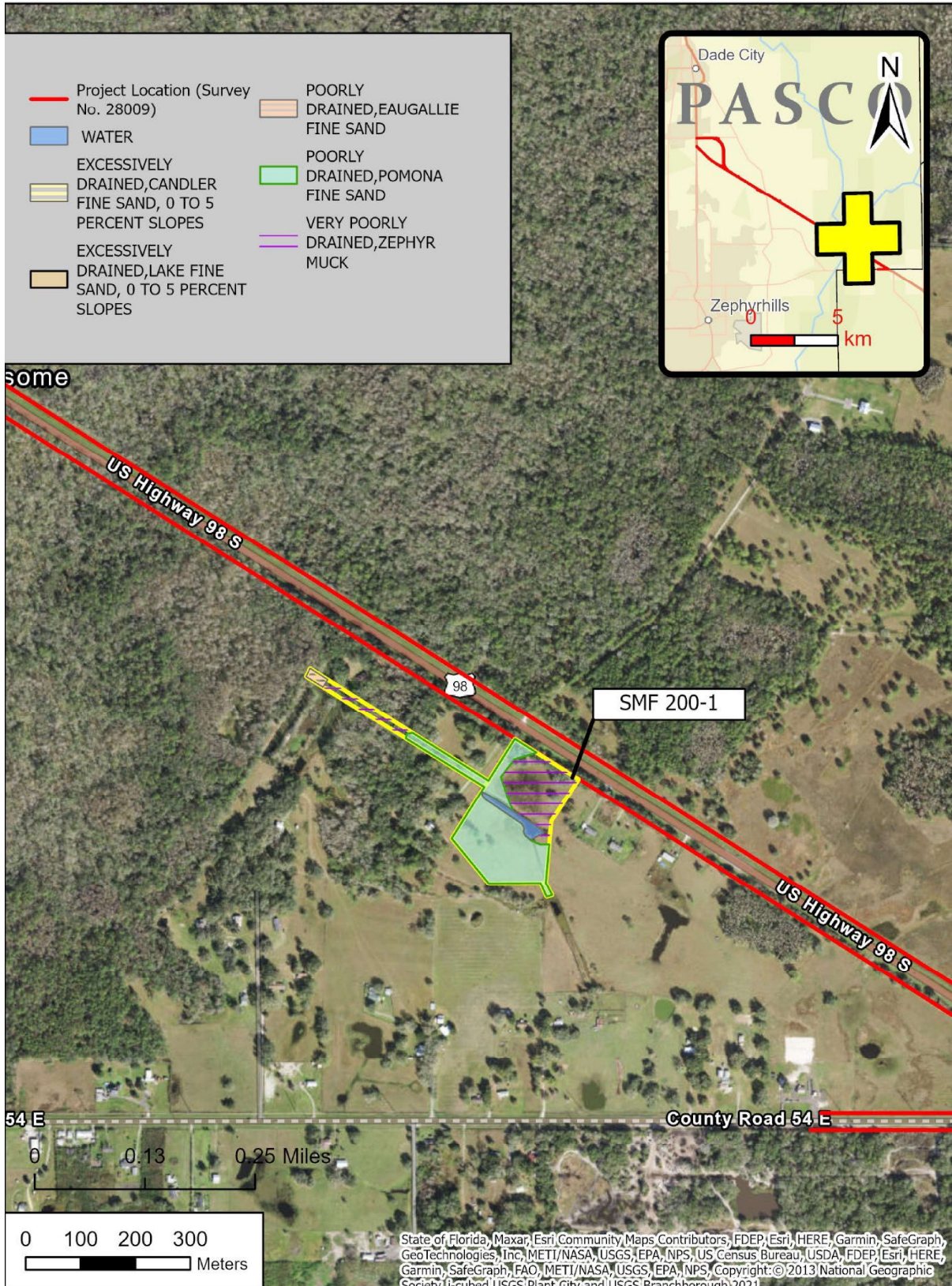


Figure 5. Soil Types within Pond 200-1.

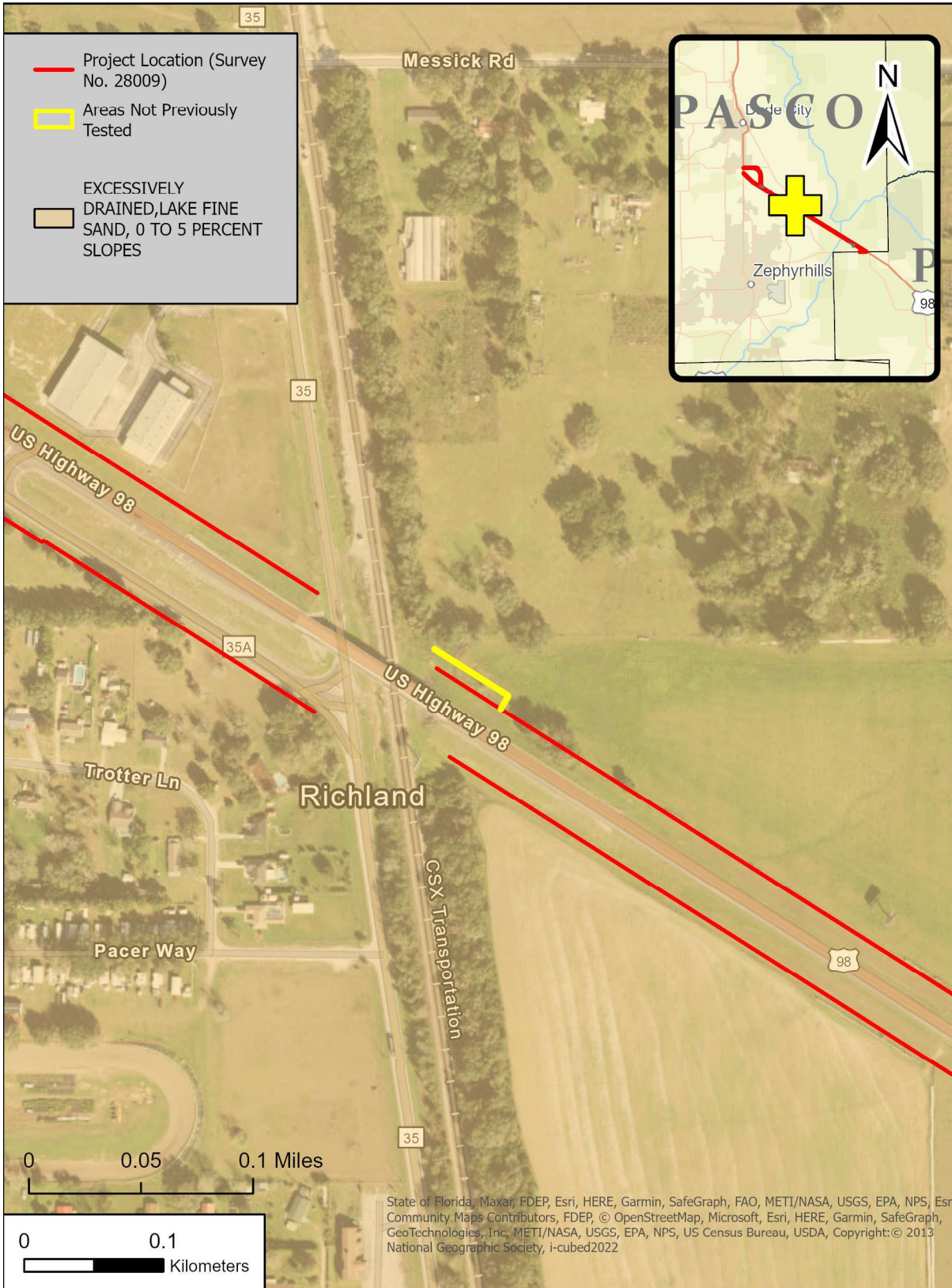


Figure 6. Soil types of area not previously tested.

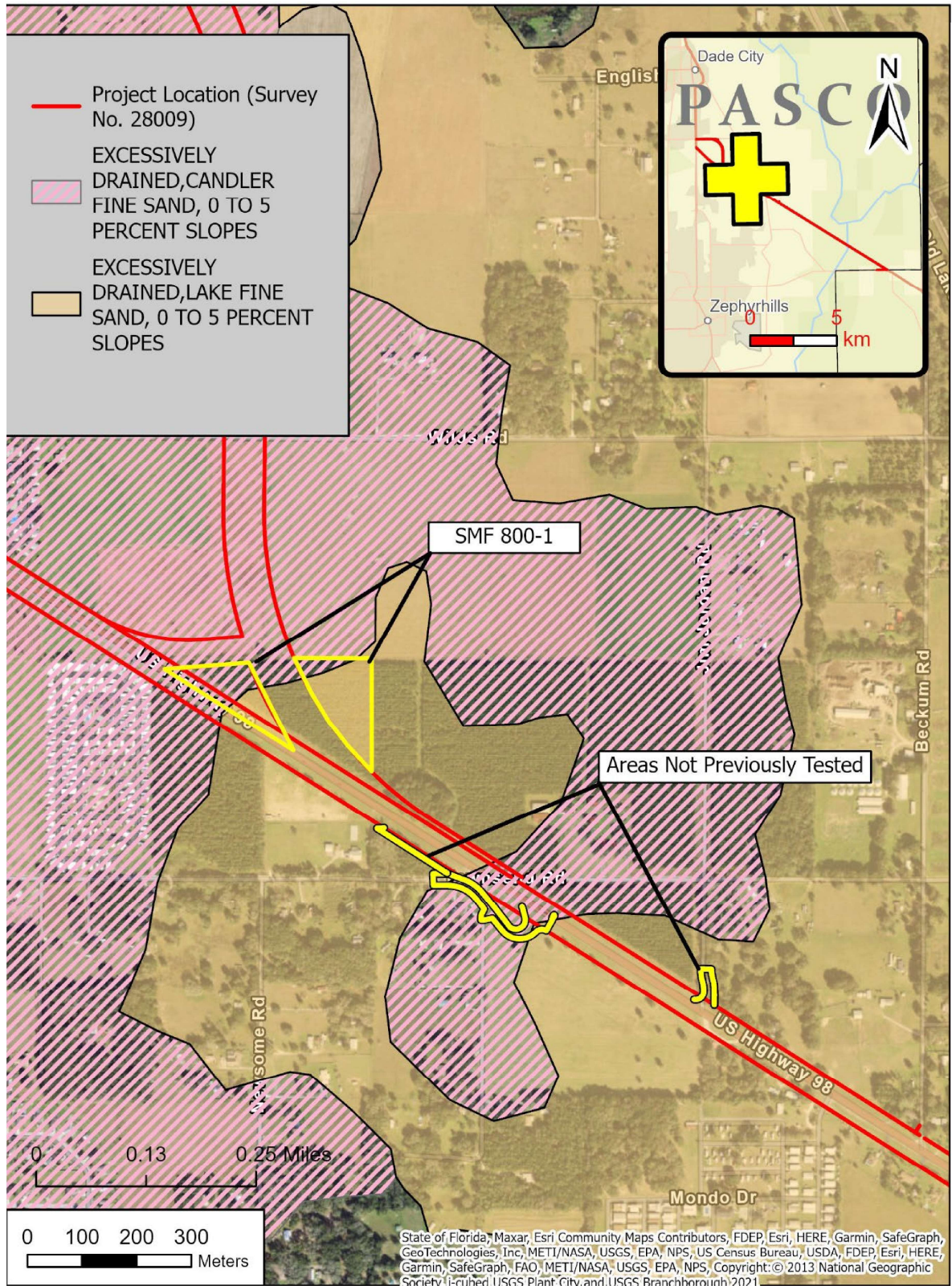


Figure 7. Soil types within Pond 800-1 and other areas not previously tested.

SECTION 4 HISTORIC OVERVIEW

In-depth historic and prehistoric overviews were included in the 2021 PD&E, Cultural Resource Assessment Survey of US 98/SR 35/SR 700 from CR 54 to US 301 (SR 39) PD&E Study, Pasco County, Florida and may be referenced for this report (ACI 2021a; FDHR Survey No. 28009).

SECTION 5 BACKGROUND RESEARCH AND CONSIDERATIONS

The field survey was preceded by background research, which included a comprehensive review of archaeological and historical literature, records and other documents and data pertaining to the project area. This research was conducted to ascertain the types of cultural resources known in the project area and vicinity, their cultural affiliations, site location information, and other relevant data. This included a review of sites listed in the NRHP, the FMSF, cultural resource survey reports, published books and articles, unpublished manuscripts, maps, information from the files of ACI including the CRAS and Ponds Technical Memorandum for this portion of US 98 (Draft ACI 2021a, 2021b), and ETDM Project No. 14374. It should be noted that the FMSF information in this report was obtained in February 2022 from the FMSF. However, according to FMSF personnel, input may be one month behind receipt of reports and site files. No individuals were available for interview.

As a result of the archaeological background research, there is one previously recorded prehistoric archaeological site within [REDACTED] [REDACTED] No evidence of the site was found during ACI's 2021 survey (ACI 2021a) and in March 2022, the SHPO determined the site not eligible for listing in the NRHP (FMSF).

Thus, the project APE has a variable archaeological probability for aboriginal site occurrence and a low occurrence for historic archaeological sites. The determinations of archaeological probability were based on the environmental variables such as soil type, distance to fresh water, and locations of previously recorded sites in the general vicinity.

Historical/architectural background research included a review of the FMSF and the NRHP. The research indicated no historic resources within the historical APE. None were expected during field investigations.

SECTION 6 STUDY METHODOLOGY

The FDHR's Module Three, *Guidelines for Use by Historic Professionals*, indicates that the first stage of archaeological field survey is a reconnaissance of the project area to "ground truth," or ascertain the validity of the predictive model (FDHR 2003). During this part of the survey, the researcher assesses whether the initial predictive model needs adjustment based on disturbance or conditions

such as constructed features (i.e., parking lots, buildings, etc.), underground utilities, landscape alterations (i.e., ditches and swales, mined land, dredged and filled land, agricultural fields), or other constraints that may affect the archaeological potential. Additionally, these Guidelines indicate that non-systematic “judgmental” testing may be appropriate in urbanized environments where pavement, utilities, and constructed features make systematic testing unfeasible; in geographically restricted areas such as proposed pond sites; or within project areas that have limited high and moderate probability zones, but where a larger subsurface testing sample may be desired. While predictive models are useful in determining preliminary testing strategies in a broad context, it is understood that testing intervals may be altered due to conditions encountered by the field crew at the time of survey. A reasonable and good faith effort has been made to document any historic properties located within the project APE (Advisory Council on Historic Preservation n.d.).

Archaeological field survey methods included both ground surface reconnaissance combined with systematic and judgmental subsurface shovel testing. Systematic shovel tests were placed at 25-, 50- and 100-meter (m) intervals. Each shovel test measured 0.5 m in diameter and was dug to a depth of 1 m unless impeded by disturbance or water. Soil from each test pit was screened through 6.3-millimeter (mm) mesh hardware cloth to maximize the recovery of artifacts. The location of all shovel tests was recorded with a Trimble Juno 5, and, following the recording of relevant data such as stratigraphic profile and artifact finds, all shovel tests were refilled.

Historical/architectural field methodology consisted of a field survey of the APE to determine if any unrecorded historic resources (i.e., bridges, roads, cemeteries) that are 46 years of age or older (constructed in or prior to 1975), were within the historic APE and to establish if any such resources could be determined eligible for listing in the NRHP. Had historic resources been found, each property would have been photographed and information would have been gathered for the completion of FMSF forms. In addition to architectural descriptions, each historic resource would have been reviewed to assess style, historic context, condition, and potential NRHP eligibility. Also, informant interviews would have been conducted, if possible, with knowledgeable persons to obtain site-specific building construction dates and/or possible associations with individuals or events significant to local or regional history.

SECTION 7 INADVERTENT/UNANTICIPATED DISCOVERY OF CULTURAL REMAINS

Occasionally, archaeological deposits, subsurface features or unmarked human remains are encountered during the course of development, even though the project area may have previously received a thorough and professionally adequate cultural resources assessment. Such events are rare, but they do occur. In the event that human remains are encountered during the course of development, the procedures outlined in Chapter 872, *FS* must be followed. However, it was not anticipated that such sites would be found during this survey.

In the event such discoveries are made during the development process, all activities in the immediate vicinity of the discovery will be suspended, and a professional archaeologist will be contacted to evaluate the importance of the discovery. The area will be examined by the archaeologist, who, in consultation with staff of the Florida SHPO, will determine if the discovery is significant or potentially significant. In the event the discovery is found to be not significant, the work may immediately resume. If, on the other hand, the discovery is found to be significant or potentially significant, then development activities in the immediate vicinity of the discovery will continue to be suspended until such time as a mitigation plan, acceptable to SHPO, is developed and implemented. Development activities may then resume within the discovery area, but only when conducted in accordance with the guidelines and conditions of the approved mitigation plan.

SECTION 8 LABORATORY METHODS AND CURATION

If recovered cultural materials would have been found, they would have been cleaned and sorted by artifact class and subjected to a limited artifact analysis. However, no artifacts were found within the current archaeological APE.

Curation of project-related information (i.e., maps, field notes, and photographs) will be at ACI in Sarasota, file number P19060C, until transfer to a FDOT-designated repository.

SECTION 9 SURVEY RESULTS

Archaeological Survey Results: Archaeological field survey included both ground surface reconnaissance and the excavation of a total of 44 shovel tests; all were negative for artifacts (**Figures 8, 9, 10**). In addition, previous shovel tests (N= 19, denoted by purple shading in **Figures 8, 9, 10**) are shown to demonstrate that that areas within and or adjacent to the new roadway design areas have been adequately covered. On **Figure 9**, although no shovel tests are shown in the new design area, this area was included in the APE of the previous US 98 CRAS (Survey No. 28009). Also, the SHPO previously concurred with the methodology and results of the corridor and pond sites (Survey Nos. 27998 and 28009; Parsons 2021a, 2021b) Shovel tests were placed at 25, 50, and 100 m intervals and judgmentally. Each shovel test measured 0.5 m in diameter and was dug to a depth of 1 m unless impeded by water. As a result, no new archaeological sites were found and no evidence of previously recorded [REDACTED] Thus, it is not discussed in this document and the FMSF was not updated for [REDACTED] was recently updated (ACI 2021a) and no evidence was found during this survey. In addition, the SHPO determined the site not eligible for listing in the NRHP in March of this year (FMSF).

Shovel test stratigraphy was variable throughout the APE. Below is a representation of the types of soil stratigraphy encountered with sample photographs.

- 0 to 25 cm below surface (cmbs) of dark gray; 25 to 80 cm of brown wet sand; followed by 20+ cm of water (**Photo 5**)
- 0-30 cmbs of gray/brown sand followed by 30-100 cm of orange-brown loose sand (**Photo 6**)

For the APE, a reasonable and good faith effort was made per the regulations laid out in 36 CFR § 800.4(b) (1) (Advisory Council on Historic Preservation n.d.) to test all areas of the APE.



Photo 5. Sample stratigraphy within Pond 200-1.



Photo 6. Sample stratigraphy within Pond 800-1.

Historical/Architectural Survey Results: Historical/architectural background research included a review of the FMSF and the NRHP. The research indicated no historic resources are within the APE and the field survey confirmed this.

SECTION 10 CONCLUSIONS

Archaeological background research indicated a low to high probability for the occurrence of historic and/or prehistoric archaeological sites. No new archaeological sites were found and no evidence of previously recorded [REDACTED] was found. Historical/architectural background research indicated no new and no previously recorded historic resources.

Given the results of background research and field survey no prehistoric or historic archaeological sites or historic resources that are listed, eligible for listing, or that appear potentially eligible for listing in the NRHP were located within the APE. Therefore, it is the professional opinion of ACI that the proposed project will result in no historic properties affected.

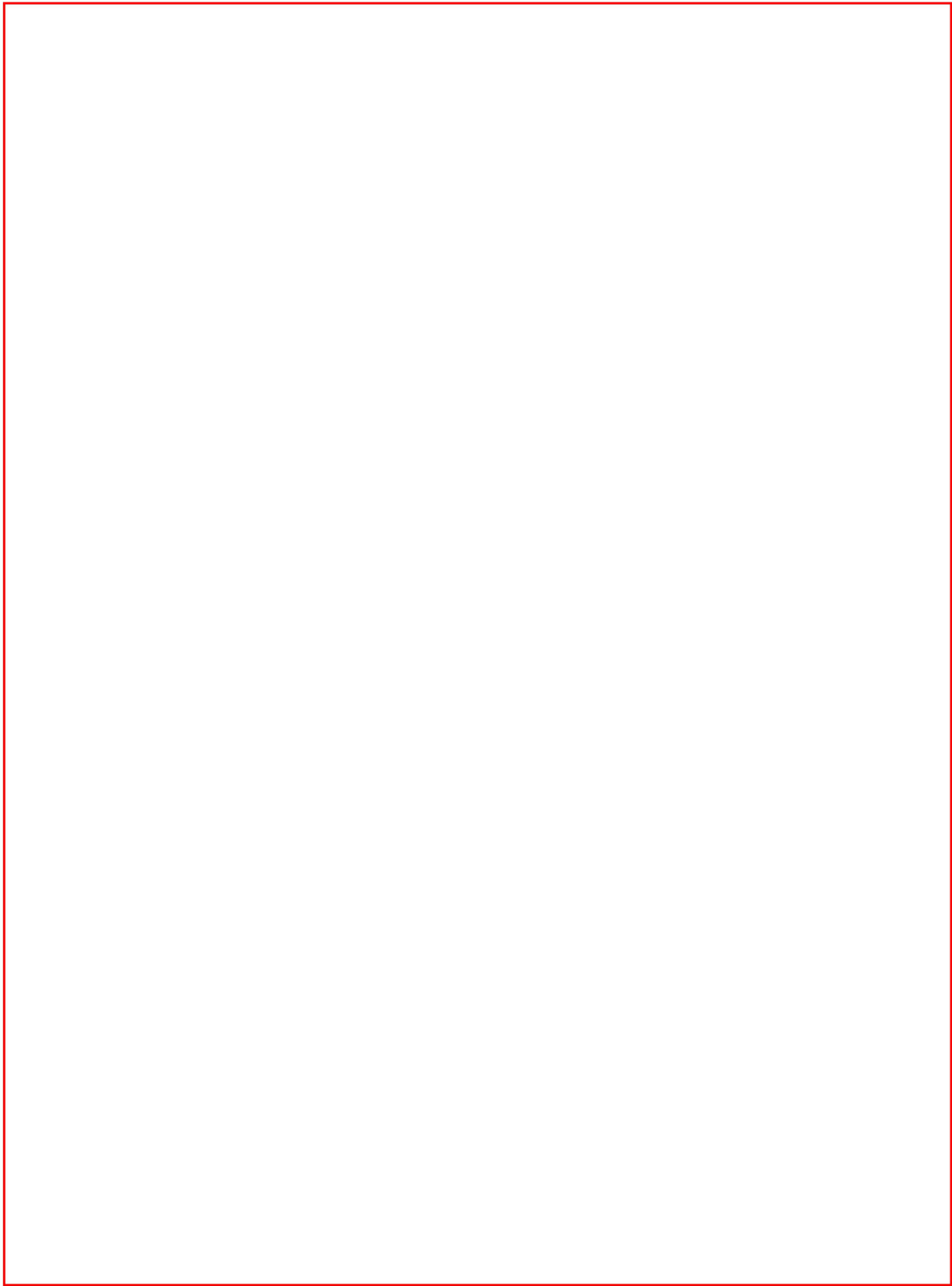


Figure 8. Approximate locations of shovel tests and previously recorded cultural resources.



Figure 9. Approximate locations of previous shovel tests; no new shovel tests were placed in the new design area since this area was in previous APE.

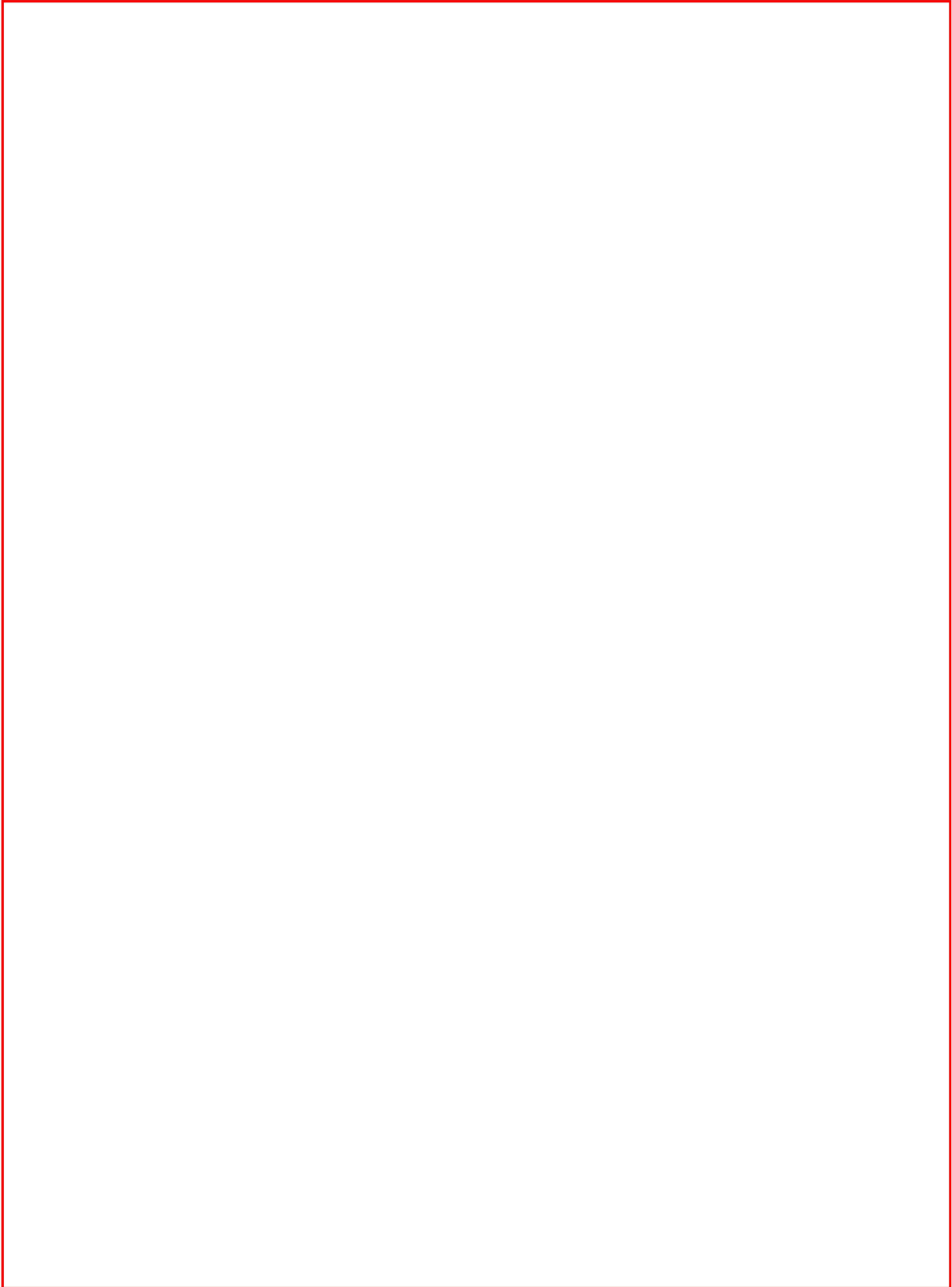


Figure 10. Approximate locations of shovel tests.

SECTION 11 LITERATURE CITED

Advisory Council on Historic Preservation

- n.d. Meeting the “Reasonable and Good Faith” Identification Standard in Section 106 Review. Accessed at http://www.achp.gov/docs/reasonable_good_faith_identification.pdf.

Archaeological Consultants Inc. (ACI)

- 2021a Cultural Resource Assessment Survey Report US 98/SR 35/SR 700 from the Polk County Line/CR 54 to US 301 (SR 39/US 41) Project Development & Environment Study, Pasco County, Florida. ACI, Sarasota. FDHR Survey No. 28009.
- 2021b Cultural Resource Assessment Survey Technical Memorandum Stormwater Management Facility (SMF) Sites and Floodplain Compensation Sites US 98/SR 35/SR 700 from the Polk County Line/CR 54 to US 301 (SR 39/US 41) Project Development & Environment Study, Pasco County, Florida. ACI, Sarasota. FDHR Survey No. 27998.

Florida Department of Transportation (FDOT)

- 2020 Project Development and Environment Manual, Part 2, Chapter 8, Archaeological and Historical Resources. Florida Department of Transportation, Tallahassee.
- 2021 ETDM Report No. 14374. Florida Department of Transportation, Tallahassee.

Florida Division of Historical Resources (FDHR)

- 2003 *Cultural Resource Management Standards and Operational Manual*. Florida Division of Historical Resources, Tallahassee.

Florida Master Site File Form (FMSF)

Various site file forms. On file, FDHR, Tallahassee.

Lochner

- 2022 Project Description received from Lochner, February.

Parsons, Timothy A.

- 2021a SHPO Concurrence, Reference No. 2021-40D: Cultural Resource Assessment Survey Report US 98/SR 35/SR 700 from the Polk County Line/CR 54 to US 301 (SR 39/US 41) Project Development & Environment Study, Pasco County, Florida. ACI, Sarasota. FDHR Survey No. 28009.
- 2021b SHPO Concurrence, Reference No. 2021-6591: Cultural Resource Assessment Survey Technical Memorandum Stormwater Management Facility (SMF) Sites and Floodplain Compensation Sites US 98/SR 35/SR 700 from the Polk County Line/CR 54 to US 301 (SR 39/US 41) Project Development & Environment Study, Pasco County, Florida. ACI, Sarasota. FDHR Survey No. 27998.

United States Department of Agriculture (USDA)

- 1982 *Soil Survey of Pasco County, Florida*. USDA, Soil Conservation Service.

United States Geological Survey (USGS)

1960a Branchborough, Fla.

1960b Dade City, Fla. Photorevised 1988.

Wharton, Barry

1979 An Archaeological Assessment Survey of the Construction Impact Areas of the Upper Hillsborough Flood Detention Area, Southeastern Pasco County, Florida. FDHR, Tallahassee.

Appendices

Appendix A SHPO Correspondence

Appendix B Survey Log

APPENDIX A

SHPO Correspondence



Florida Department of Transportation

RON DESANTIS
GOVERNOR

11201 N. McKinley Drive
Tampa, Florida 33612-6456

KEVIN J. THIBAUT, P.E.
SECRETARY

October 20, 2021

Timothy A. Parsons, Ph.D., Director
State Historic Preservation Officer
Florida Division of Historical Resources
500 South Bronough Street
Tallahassee, FL 32399-0250

Attention: Alyssa McManus, Transportation Compliance Review Program

**Re: Cultural Resource Assessment Survey
US 98/SR 35/SR 700 from CR 54 to US 301 (SR 39)
Pasco County, Florida
Work Program Item Segment (WPIS) No.: 443368-2
Federal Aid Project No.: TBD**

Dear Dr. Parsons:

The Florida Department of Transportation (FDOT), District Seven, is conducting a Project Development and Environment (PD&E) Study along US Highway (US) 98 / State Road (SR) 35 / SR 700 from County Road (CR) 54 to US 301 / SR 39 in Pasco County, Florida. The PD&E Study will focus on widening this section of US 98 from a two-lane undivided facility to a four-lane divided facility and includes the realignment of US 98 between CR 35A to US 301. The realignment allows US 98 to align with the Clinton Avenue (New SR 52) intersection at US 301. The PD&E Study satisfies all applicable requirements to qualify for federal-aid funding of subsequent development phases (design, right-of-way [ROW]) acquisition, and construction).

Where the roadway is widened, the roadway consists of a rural typical section and will fit within the existing 160-foot-wide ROW. In the realignment section, the roadway consists of a suburban typical section within a proposed 245-foot-wide ROW and include a 6-foot sidewalk on the east side of the road and a 12-foot trail on the west side of the road. Where the new US 98 connects to Clinton Avenue and extends to US 301, the roadway consists of an urban typical section within a 140-foot-wide ROW and includes a 6-foot sidewalk on the east side of the road and a 10-foot trail on the west side of the road. The proposed improvements will include construction of stormwater management facility (SMF) and floodplain compensation (FPC) sites which will be selected and surveyed for cultural resources soon.

Enclosed is one copy of the Cultural Resource Assessment Survey (CRAS) (dated October 2021), one Survey Log Sheet, 46 Florida Master Site File (FMSF) forms (39 original and

seven updated), and a CD containing an electronic version of these files.

On behalf of the FDOT District Seven, Archaeological Consultants, Inc. (ACI) conducted a CRAS for this project. The purpose of the CRAS Update was to identify the presence of resources listed in or considered eligible for listing in the National Register of Historic Places (NRHP) according to the criteria set forth in 36 CFR Section 60.4 and if applicable, to apply the Criteria of Adverse Effect, as set forth in 36 CFR 800.5 (a)(1) and Chapter 267, FS to the project. The CRAS was conducted by staff who meet the *Secretary of the Interior's Professional Qualification Standards* (48 FR 44716).

The archaeological APE was limited to the footprint of proposed activities within the existing boundaries of the project. The historical/architectural APE includes immediately adjacent parcels where resources within 200 feet (ft) of the existing ROW were surveyed along the existing segment of US 98. However, in the area of the new alignment between US 98 and Clinton Avenue (New SR 52), the APE was extended to include historic resources within 500 ft from the edge of the proposed ROW. All proposed work activities as shown in the October 2021 Preferred Alternative Concept Plans (included in the CRAS Appendix A) will take place within the APE as defined in the CRAS report.

Background research and a cultural resource field survey was conducted to locate, identify, record, and evaluate any archaeological resources, historic structures (constructed in or prior to 1975), and potential districts within or adjacent to the APE.

Archaeological background research indicated that four previously recorded archaeological sites are within the APE and three are immediately adjacent to the APE. Given the known patterns of aboriginal settlement, the APE was considered to have a variable probability for prehistoric archaeological site occurrence and a low probability for historic archaeological sites. Background research also indicated that sites, if present, would most likely be small lithic or artifact scatters. Archaeological field survey included ground surface reconnaissance as well as the excavation of 282 shovel tests with 10 being positive for artifacts. As a result of this survey, two new archaeological sites were found (8PA03418 and 8PA03419) and evidence of two previously recorded archaeological sites were also documented (8PA0144B and 8PA0145K), as well as one Archaeological Occurrence (AO). An AO is defined by the FMSF as "the presence of one or two nondiagnostic artifacts, not known to be distant from their original context which fit within a hypothetical cylinder of 30 meters diameter regardless of depth below surface." Thus, occurrences are not recorded as sites and are not NRHP eligible. No evidence was found for sites 8PA00355 and 8PA00046 that extended into the US 98 APE but the FMSF forms for these sites were updated to reflect the negative evidence within the APE. In addition, no evidence of adjacent sites 8PA00047, 8PA00145C, and 8PA0144B were found to extend into the APE, thus those FMSF forms were not updated. The portion of each identified site located within the US 98 APE is not eligible for listing in the NRHP; however, there is insufficient information to evaluate the site as a whole.

Historic background research indicated that one historic resource was previously recorded within the APE. This includes the circa (ca.) 1925 Frame Vernacular residence located at

1061 Beckum Road (8PA02224). The resource was first recorded in 2005 and has not been evaluated by the State Historic Preservation Officer (SHPO). In addition, unrecorded segments of the South Florida Railroad – Pemberton Ferry Branch/Richloam Railroad (8PA02802) and Old Lakeland Highway (8PA03343) are located within the historical APE. The SHPO evaluated segments of the Railroad (8PA02802), located outside of the APE, and found there was insufficient information to make a determination of eligibility; however, the segments of Old Lakeland Highway have not been evaluated by the SHPO.

The historical/architectural field survey resulted in the identification and evaluation of 40 historic resources within the APE. Of these, 37 were newly identified, recorded, and evaluated (8PA03346 – 8PA03381; 8PA03417), two unrecorded segments of the South Florida Railroad – Pemberton Ferry Branch/Richloam Railroad (8PA02802) and Old Lakeland Highway (8PA03343) were recorded and evaluated, and one previously recorded historic resource (8PA02224) was identified and re-evaluated. These 40 historic resources include: 32 buildings (8PA02224, 8PA03350 – 8PA03355, 8PA03357 – 8PA03381) constructed between ca. 1925 and ca. 1975, one object (8PA03346), one building complex resource group (8PA03417), two linear resources (8PA02802 and 8PA03343), and four bridges (8PA03347, 8PA03348, 8PA03349, 8PA03356).

Of the 40 identified historic resources, 38 appear ineligible for listing in the NRHP either individually or as part of a historic district. Overall, the buildings are common examples of their respective architectural styles that have been altered. The bridges and one linear resource (8PA03343) are of common design and construction that lack unique design features and characteristics. In addition, background research for these resources did not reveal any historic associations with significant persons and/or events; therefore, none appear eligible for listing in the NRHP.

Two historic resources within the APE appear eligible for listing in the NRHP. These include a segment of the South Florida Railroad – Pemberton Ferry Branch/Richloam Railroad (8PA02802) and the newly identified Polk-Pasco County Line Obelisk (8PA03346). Since these two resources are considered NRHP eligible but not yet evaluated by the SHPO, proposed project effects will be evaluated as if the resources have been determined NRHP eligible. Therefore, the Criteria of Adverse Effect, as set forth in 36 CFR Part 800.5(a)(1), was applied to the project.

The segment of South Florida Railroad – Pemberton Ferry Branch/Richloam Railroad (8PA02802) within the APE appears eligible for listing in the NRHP at the local level under Criterion A in the areas of Community Planning & Development and Transportation. Within the APE, Bridge No. 140025 carries US 98 over the railroad. Per the Concept Plans, work in this area includes widening the east and west bound lanes of the bridge to accommodate the US 98 road widening from a two-lane facility to a four-lane facility. Based on the scope of work, the undertaking will not affect the historical alignment or the integrity of the railroad as a whole.

The Polk-Pasco County Line Obelisk (8PA03346) appears eligible for listing in the NRHP at

Timothy A. Parsons, Ph.D., Director
US 98 / SR 36 / SR 700 from CR 54 to US 301 (SR 39)
Pasco County, Florida
WPIS No.: 443368-2
October 20, 2021
Page 4 of 5

the local level under Criterion A in the areas of Transportation and Local History. The Obelisk is located over the Polk County line in Pasco County at the northeast intersection of US 98 and CR 54. Per the October Concept Plans, the roadway improvements are being performed within the existing ROW and centered on the centerline of the roadway. While this will result in the roadway shifting closer to the obelisk, the obelisk will not be impacted and will maintain its current location. Based on the scope of work, the undertaking will not adversely result in physical destruction, damage, or alteration of all or part of the of the Obelisk. Therefore, it is the opinion of ACI and FDOT District Seven, that the proposed undertaking will have *no adverse effect* on the South Florida Railroad – Pemberton Ferry Branch/Richloam Railroad (8PA02802) or the Polk-Pasco County Line Obelisk (8PA03346).

In addition to the 40 historic resources identified within the APE, the Pasco County property appraiser identified one historic resource constructed in ca. 1961 that could not be evaluated or recorded during the field survey due to lack of accessibility and/or obstructed views from the US 98 ROW. The resource is located at 9287 US Highway 98. Based on available information, the resource is probably a typical example of a vernacular style building; however, the status and condition of the resource is unknown. Per the Concept Plans dated October 2021, there is no proposed ROW acquisition from this parcel. Since the building is hidden by existing vegetation on the parcel and there is no proposed ROW acquisition, the proposed project should have no effect on the building.

This information is being provided in accordance with the provisions of the National Historic Preservation Act of 1966 (as amended), which are implemented by the procedures contained in 36 CFR, Part 800, as well as in accordance with the provisions contained in the revised Chapter 267, *Florida Statutes*.

The environmental review, consultation, and other actions required by applicable Federal environmental laws for this project are being, or have been, carried out by the FDOT pursuant to 23 U.S.C. § 327 and a Memorandum of Understanding dated December 14, 2016, and executed by the FHWA and FDOT.

Provided you approve the recommendations and findings in the enclosed CRAS, please sign below for concurrence. If you have any questions, or if I may be of assistance, please contact me at (813) 975-6637 or crystal.geiger@dot.state.fl.us.

Sincerely,



Crystal Geiger
Environmental Specialist III
Cultural Resource Coordinator

Enclosures

Timothy A. Parsons, Ph.D., Director
US 98 / SR 36 / SR 700 from CR 54 to US 301 (SR 39)
Pasco County, Florida
WPIS No.: 443368-2
October 20, 2021
Page 5 of 5

cc: Robin Rhinesmith, FDOT
Lindsay Rothrock, FDOT OEM
Maranda Kles, ACI

Craig Fox, FDOT
Berenice Sueiro-Vazquez, Atkins

The State Historic Preservation Officer finds the attached Cultural Resource Assessment Survey (CRAS) complete and sufficient and concurs / does not concur with the recommendations and findings in this cover letter for SHPO / FDHR Project File Number 2021-40D. Or, the SHPO finds the attached CRAS document contains insufficient information.

In accordance with the Programmatic Agreement among the FHWA, ACHP, SHPO, and FDOT Regarding Implementation of the Federal-Aid Highway Program in Florida, if providing concurrence with a finding of No Historic Properties Affected for a project as a whole, or to No Adverse Effect on a specific historic property, SHPO shall presume that FDOT will proceed with a *de minimis* Section 4(f) finding at its discretion for the use of land from the historic property.

SHPO/FDHR Comments:

11/18/2021

for

Timothy A. Parsons, Ph.D., Director
Florida Division of Historical Resources

Date



Florida Department of Transportation

RON DESANTIS
GOVERNOR

11201 N. McKinley Drive
Tampa, Florida 33612-6456

KEVIN J. THIBAUT, P.E.
SECRETARY

November 4, 2021

Timothy A. Parsons, Ph.D., Director
State Historic Preservation Officer
Florida Division of Historical Resources
500 South Bronough Street
Tallahassee, FL 32399-0250

Attention: Alyssa McManus, Transportation Compliance Review Program

**Re: Cultural Resource Assessment Survey Technical Memorandum
Stormwater Management Facility (SMF) Sites and Floodplain Compensation
Sites
US 98/SR 35/SR 700 from CR 54 to US 301 (SR 39)
Pasco County, Florida
Work Program Item Segment (WPIS) No.: 443368-2
Federal Aid Project No.: TBD**

Dear Dr. Parsons:

The Florida Department of Transportation (FDOT), District Seven, is conducting a Project Development and Environment (PD&E) Study along US Highway (US) 98 / State Road (SR) 35 / SR 700 from County Road (CR) 54 to US 301 / SR 39 in Pasco County, Florida. The PD&E Study will focus on widening this section of US 98 from a two-lane undivided facility to a four-lane divided facility and includes the realignment of US 98 between CR 35A to US 301. The realignment allows US 98 to align with the Clinton Avenue (New SR 52) intersection at US 301. This is a federally funded project and part of on-going improvements to US 98.

A Cultural Resource Assessment Survey (CRAS) (dated October 2021) for the mainline corridor was submitted to your office on October 21, 2021. The proposed improvements will include construction of eight (8) off-site stormwater management facility (SMF) and two (2) floodplain compensation (FPC) sites. A CRAS for the SMF and FPC sites has since been prepared and is being submitted with this letter.

Enclosed is one copy of the CRAS for SMF and FPC sites (dated November 2021), one Survey Log Sheet, two Florida Master Site File (FMSF) forms (one original [8PA03432] and updated [8PA00144]), and a CD containing an electronic version of these files.

On behalf of the FDOT District Seven, Archaeological Consultants, Inc. (ACI) conducted a CRAS for the SMF and FPC sites for this project. The purpose of the CRAS Update was to

identify the presence of resources listed in or considered eligible for listing in the National Register of Historic Places (NRHP) according to the criteria set forth in 36 CFR Section 60.4 and if applicable, to apply the Criteria of Adverse Effect, as set forth in 36 CFR 800.5 (a)(1) and Chapter 267, FS to the project. The CRAS was conducted by staff who meet the *Secretary of the Interior's Professional Qualification Standards* (48 FR 44716).

The archaeological area of potential effects (APE) was defined as the area contained within the footprint of each SMF and FPC site. The historical/architectural APE includes the archaeological APE and immediately adjacent parcels as contained within 100 feet (ft) or not obstructed from view by vegetation. The proposed off-site SMF and FPC sites are outside of existing US 98 ROW.

Background research and a cultural resource field survey was conducted to locate, identify, record, and evaluate any archaeological resources, historic structures (constructed in or prior to 1975), and potential districts within or adjacent to the APE.

Archaeological background research indicated a low to high probability for the occurrence of historic and/or prehistoric archaeological sites. There are three previously recorded prehistoric archaeological sites within three of the pond sites (SMF 200-1/8PA00046, SMF 300-1/8PA00144A and 8PA00144B, and FPC 300 South-01/8PA00144A). As a result of the field survey, which included both ground surface reconnaissance and the excavation of 181 shovel tests (11 positive), no evidence of 8PA00046 was found within SMF 200-1. However, additional evidence of 8PA00144B was found in SMF 300-1; the positive shovel tests merge the two sites found in SMF 300-1 (8PA00144A and 8PA00144B) into 8PA00144 as per the FMSF guidance and a FMSF update form was prepared. This additional site evidence does not provide any previously unknown information about the site; therefore, it is not considered eligible for listing in the NRHP. No new historic or prehistoric archaeological sites were found during the current field survey.


Historic background research indicated that one historic resource (8PA03375) was previously recorded within the proposed pond site SMF 900-1. The resource is a circa (ca.) 1975 Masonry Vernacular style building that was recently identified and recorded during the US 98 PD&E Study CRAS (dated October 2021). The Masonry Vernacular style building is a common example of its respective architectural style without significant historical associations; therefore, does not appear eligible for listing in the NRHP. The current SMF and FPC CRAS field survey resulted in the identification of two historic resources within and/or adjacent to two proposed pond sites. These include one previously recorded resource (8PA03375) within SMF 900-1 and one newly identified resource (8PA03432) adjacent to FPC 300-North-01. The newly identified, recorded, and evaluated historic resource within the APE includes a ca. 1968 Ranch Style residence. Because the previously recorded resource was recently recorded, a FMSF form was not prepared for this survey. Overall, the historic resources are of common design and construction and lack significant historical associations to persons or events. Therefore, the historic resources within the APE appear ineligible for listing in the NRHP.

Timothy A. Parsons, Ph.D., Director
US 98 / SR 36 / SR 700 from CR 54 to US 301 (SR 39)
Pasco County, Florida
WPIS No.: 443368-2
November 4, 2021
Page 3 of 3

This information is being provided in accordance with the provisions of the National Historic Preservation Act of 1966 (as amended), which are implemented by the procedures contained in 36 CFR, Part 800, as well as in accordance with the provisions contained in the revised Chapter 267, *Florida Statutes*.

The environmental review, consultation, and other actions required by applicable Federal environmental laws for this project are being, or have been, carried out by the FDOT pursuant to 23 U.S.C. § 327 and a Memorandum of Understanding dated December 14, 2016, and executed by the Federal Highway Administration (FHWA) and FDOT.

Provided you approve the recommendations and findings in the enclosed CRAS, please sign below for concurrence. If you have any questions, or if I may be of assistance, please contact me at (813) 975-6637 or crystal.geiger@dot.state.fl.us.

Sincerely,

Crystal Geiger
Environmental Specialist III
Cultural Resource Coordinator

Enclosures

cc: Robin Rhinesmith, FDOT
Lindsay Rothrock, FDOT OEM
Maranda Kles, ACI

Craig Fox, FDOT
Berenice Sueiro-Vazquez, Atkins

The State Historic Preservation Officer finds the attached Cultural Resource Assessment Survey (CRAS) complete and sufficient and concurs / does not concur with the recommendations and findings in this cover letter for SHPO / FDHR Project File Number 2021-6591. Or, the SHPO finds the attached CRAS document contains _____ insufficient information.

In accordance with the Programmatic Agreement among the FHWA, ACHP, SHPO, and FDOT Regarding Implementation of the Federal-Aid Highway Program in Florida, if providing concurrence with a finding of No Historic Properties Affected for a project as a whole, or to No Adverse Effect on a specific historic property, SHPO shall presume that FDOT will proceed with a *de minimis* Section 4(f) finding at its discretion for the use of land from the historic property.

SHPO/FDHR Comments:

for

Timothy A. Parsons, Ph.D., Director
Florida Division of Historical Resources

11/30/2021

Date

APPENDIX B

Survey Log

Ent D (FMSF only) _____



Survey Log Sheet

Florida Master Site File
Version 5.0 3/19

Survey # (FMSF only) _____

Consult *Guide to the Survey Log Sheet* for detailed instructions.

Manuscript Information

Survey Project (name and project phase)

Tech Memo Addendum Modifications to US 98/SR 35/SR 700 from CR 54 to US 301/SR 39, Pasco County

Report Title (exactly as on title page)

Cultural Resource Assessment Survey Technical Memorandum Addendum, Modifications to US 98/SR 35/SR 700 from CR 54 to US 301/SR 39 Pasco County, Florida; WPI Segment No.: 443368-2

Report Authors (as on title page)

1. ACI 3. _____
2. _____ 4. _____

Publication Year 2022

Number of Pages in Report (do not include site forms) 20

Publication Information (Give series, number in series, publisher and city. For article or chapter, cite page numbers. Use the style of *American Antiquity*.)

P19060C; ACI Florida, Sarasota

Supervisors of Fieldwork (even if same as author) Names Almy, Marion

Affiliation of Fieldworkers: Organization Archaeological Consultants Inc City Sarasota

Key Words/Phrases (Don't use county name, or common words like *archaeology, structure, survey, architecture, etc.*)

1. _____ 3. _____ 5. _____ 7. _____
2. _____ 4. _____ 6. _____ 8. _____

Survey Sponsors (corporation, government unit, organization, or person funding fieldwork)

Name _____ Organization Florida Dept of Transportation - District 7

Address/Phone/E-mail 11201 North McKinley Drive Tampa, Florida 33612

Recorder of Log Sheet Lee Hutchinson Date Log Sheet Completed 3-17-2022

Is this survey or project a continuation of a previous project? No Yes: Previous survey #s (FMSF only)

Project Area Mapping

Counties (select every county in which field survey was done; attach additional sheet if necessary)

1. Pasco 3. _____ 5. _____
2. _____ 4. _____ 6. _____

USGS 1:24,000 Map Names/Year of Latest Revision (attach additional sheet if necessary)

1. Name DADE CITY Year 1960 4. Name _____ Year _____
2. Name BRANCHBOROUGH Year 1960 5. Name _____ Year _____
3. Name _____ Year _____ 6. Name _____ Year _____

Field Dates and Project Area Description

Fieldwork Dates: Start 3-7-2022 End 3-8-2022 Total Area Surveyed (fill in one) _____ hectares 10.00 acres

Number of Distinct Tracts or Areas Surveyed 5

If Corridor (fill in one for each) Width: _____ meters _____ feet Length: _____ kilometers _____ miles

Research and Field Methods

Types of Survey (select all that apply): [X]archaeological [X]architectural [X]historical/archival []underwater
[]damage assessment []monitoring report []other(describe): _____

Scope/Intensity/Procedures

Background research, surface reconnaissance, subsurface testing systematically and judgmentally within APE; 50 cm diameter, 1 m deep, 6.4 mm mesh screen; historic survey; photos taken; tech memo prepared

Preliminary Methods (select as many as apply to the project as a whole)

[]Florida Archives (Gray Building) []library research- local public [X]local property or tax records [X]other historic maps []LIDAR
[]Florida Photo Archives (Gray Building) []library-special collection [X]newspaper files [X]soils maps or data []other remote sensing
[X]Site File property search [X]Public Lands Survey (maps at DEP) [X]literature search [X]windshield survey
[X]Site File survey search []local informant(s) []Sanborn Insurance maps [X]aerial photography
[]other (describe): _____

Archaeological Methods (select as many as apply to the project as a whole)

[]Check here if NO archaeological methods were used.
[]surface collection, controlled []shovel test-other screen size []block excavation (at least 2x2 m) []metal detector
[]surface collection, uncontrolled []water screen []soil resistivity []other remote sensing
[X]shovel test-1/4" screen []posthole tests []magnetometer [X]pedestrian survey
[]shovel test-1/8" screen []auger tests []side scan sonar []unknown
[]shovel test 1/16"screen []coring []ground penetrating radar (GPR)
[]shovel test-unscreened []test excavation (at least 1x2 m) []LIDAR
[]other (describe): _____

Historical/Architectural Methods (select as many as apply to the project as a whole)

[]Check here if NO historical/architectural methods were used.
[]building permits []demolition permits []neighbor interview [X]subdivision maps
[]commercial permits [X]windshield survey []occupant interview [X]tax records
[]interior documentation [X]local property records []occupation permits []unknown
[]other (describe): _____

Survey Results

Resource Significance Evaluated? []Yes [X]No

Count of Previously Recorded Resources 0 Count of Newly Recorded Resources 0

List Previously Recorded Site ID#s with Site File Forms Completed (attach additional pages if necessary)

0

List Newly Recorded Site ID#s (attach additional pages if necessary)

0

Site Forms Used: []Site File Paper Forms [X]Site File PDF Forms

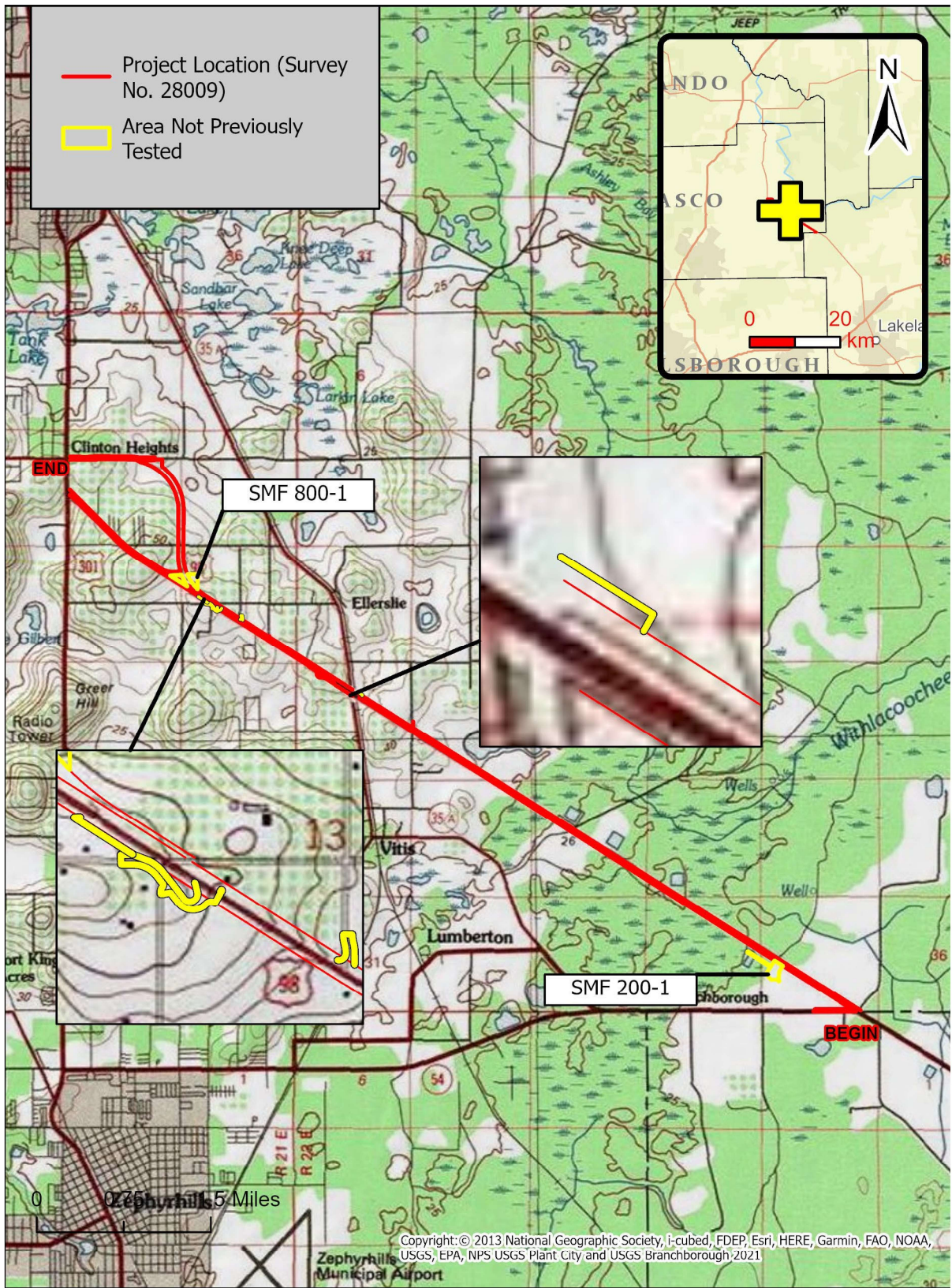
REQUIRED: Attach Map of Survey or Project Area Boundary

SHPO USE ONLY

SHPO USE ONLY

SHPO USE ONLY

Origin of Report: []872 []Public Lands []UW []1A32 # _____ []Academic []Contract []Avocational
[]Grant Project # _____ []Compliance Review: CRAT # _____
Type of Document: []Archaeological Survey []Historical/Architectural Survey []Marine Survey []Cell Tower CRAS []Monitoring Report
[]Overview []Excavation Report []Multi-Site Excavation Report []Structure Detailed Report []Library, Hist. or Archival Doc
[]Desktop Analysis []MPS []MRA []TG []Other: _____
Document Destination: Plottable Projects Plotability: _____



| | |
|---|--|
| <p>Cultural Resource Assessment Survey Addendum Township 25 S, Range 21 E, Sections 11-14; Township 25 S, Range 22 E, Sections 18-20; 27-29; 34, 35 USGS Branchborough and Dade City 1960</p> | <p>US 98 / SR 35 / SR 700 From CR 54 to US 301/SR 29 Pasco County, Florida WPI Segment No: 443368-2</p> |
|---|--|